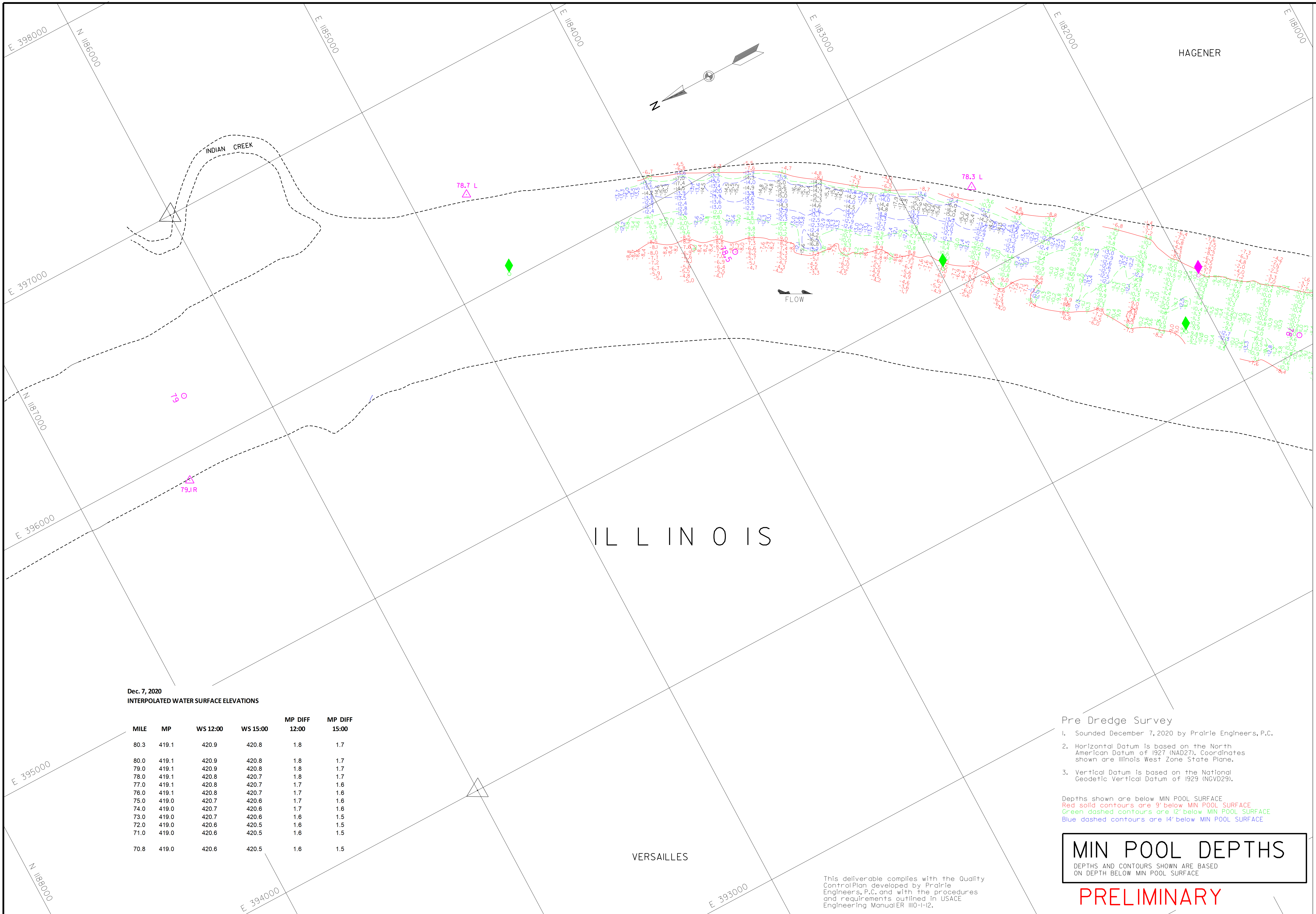




US Army Corps
of Engineers
St. Louis District

HAGENER



Dec. 7, 2020
INTERPOLATED WATER SURFACE ELEVATIONS

MILE	MP	WS 12:00	WS 15:00	MP DIFF 12:00	MP DIFF 15:00
80.3	419.1	420.9	420.8	1.8	1.7
80.0	419.1	420.9	420.8	1.8	1.7
79.0	419.1	420.9	420.8	1.8	1.7
78.0	419.1	420.8	420.7	1.8	1.7
77.0	419.1	420.8	420.7	1.7	1.6
76.0	419.1	420.8	420.7	1.7	1.6
75.0	419.0	420.7	420.6	1.7	1.6
74.0	419.0	420.7	420.6	1.7	1.6
73.0	419.0	420.7	420.6	1.6	1.5
72.0	419.0	420.6	420.5	1.6	1.5
71.0	419.0	420.6	420.5	1.6	1.5
70.8	419.0	420.6	420.5	1.6	1.5

ILLINOIS

VERSAILLES

This deliverable complies with the Quality Control Plan developed by Prairie Engineers, P.C. and with the procedures and requirements outlined in USACE Engineering Manual ER 1110-1-12.

Pre Dredge Survey

- Sounded December 7, 2020 by Prairie Engineers, P.C.
- Horizontal Datum is based on the North American Datum of 1927 (NAD27). Coordinates shown are Illinois West Zone State Plane.
- Vertical Datum is based on the National Geodetic Vertical Datum of 1929 (NGVD29).

Depths shown are below MIN POOL SURFACE
 Red solid contours are 9' below MIN POOL SURFACE
 Green dashed contours are 12' below MIN POOL SURFACE
 Blue dashed contours are 14' below MIN POOL SURFACE

MIN POOL DEPTHS
 DEPTHS AND CONTOURS SHOWN ARE BASED ON DEPTH BELOW MIN POOL SURFACE

PRELIMINARY

GAUGE RECORD

ZERO N.G.V.D.	WATER SURFACE	LAGRANGE LOCK (L)	MEREDITH
MILE		419.5	48.0
DATE		80.3	70.8
		49.1	48.0
		420.8 (1820)	425.6 (1820)
		420.8 (1820)	425.5 (1820)

ELEVATIONS ARE REFERRED TO NAZD. CONTOURS ARE BELOW MINIMUM WATER REFERENCE PLANE LAKE/POUND 17.5

Survey Date: December 7, 2020
 SUBMITTED:
 Chief, Engr. Data Mgmt. Sect.
 File Name:
 Plot Date:
 Plot Scale: 1" = 200'

Supervised by:
 PRAIRIE ENGINEERS
 Drawn by: PCE by:
 JLM
 Reviewed by:
 APPROVED:
 Chief, Geospatial Branch

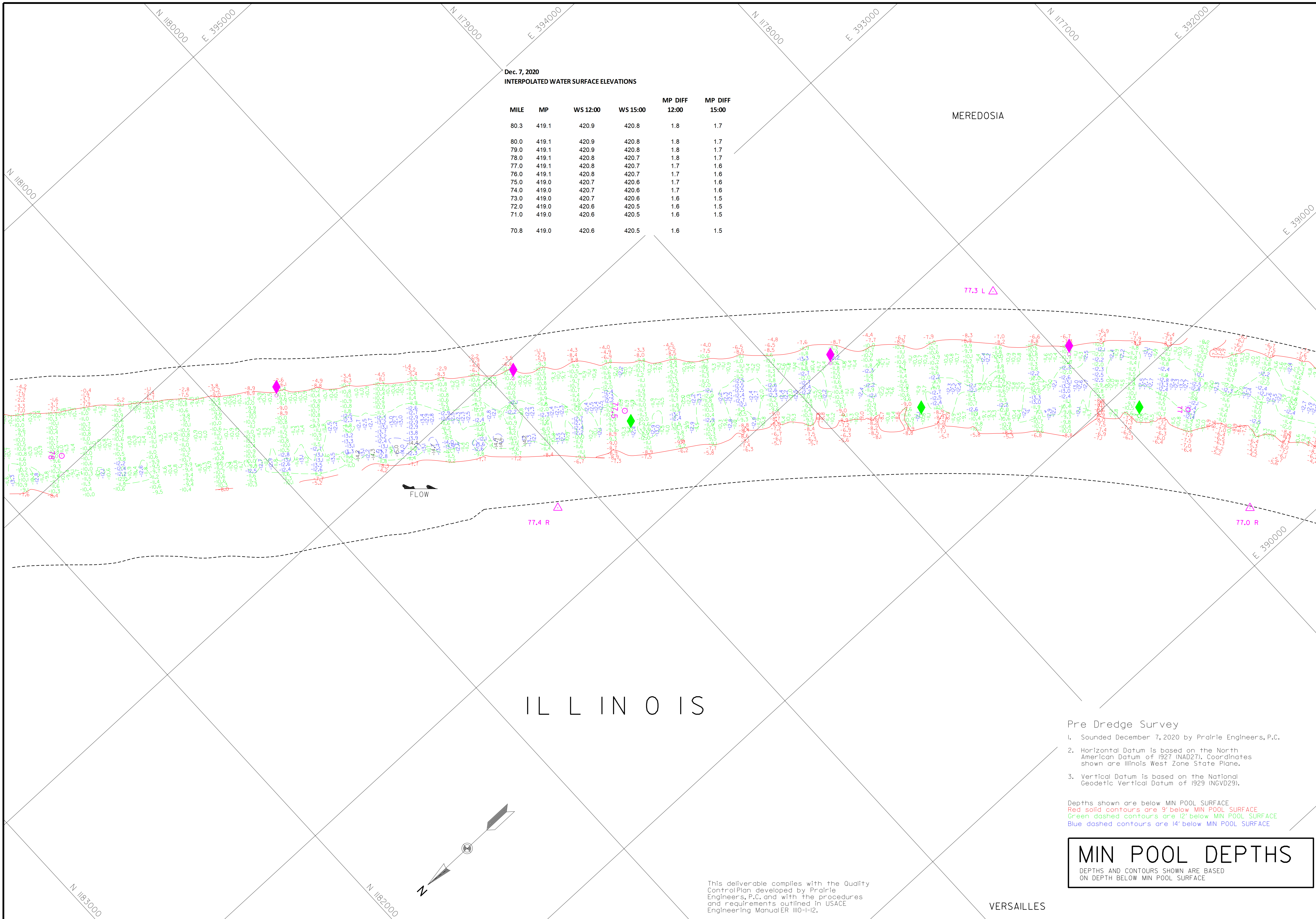
U.S. ARMY ENGINEER DIVISION
 CORPS OF ENGINEERS
 ST. LOUIS, MISSOURI
 ILLINOIS RIVER BASIN
 ILLINOIS RIVER

60 METERS
 200 FEET
 400 FEET
 THE INFORMATION DEPICTED ON THIS MAP REPRESENTS THE RESULTS OF A SURVEY CONDUCTED UNDER THE GENERAL CONDITIONS EXISTING AT THAT TIME.
 PRE DREDGE SURVEY
 RIVER MILES: 78.5 - 76.0

PLATE NUMBER
 I

Dec. 7, 2020
INTERPOLATED WATER SURFACE ELEVATIONS

MILE	MP	WS 12:00	WS 15:00	MP DIFF 12:00	MP DIFF 15:00
80.3	419.1	420.9	420.8	1.8	1.7
80.0	419.1	420.9	420.8	1.8	1.7
79.0	419.1	420.9	420.8	1.8	1.7
78.0	419.1	420.8	420.7	1.8	1.7
77.0	419.1	420.8	420.7	1.7	1.6
76.0	419.1	420.8	420.7	1.7	1.6
75.0	419.0	420.7	420.6	1.7	1.6
74.0	419.0	420.7	420.6	1.7	1.6
73.0	419.0	420.7	420.6	1.6	1.5
72.0	419.0	420.6	420.5	1.6	1.5
71.0	419.0	420.6	420.5	1.6	1.5
70.8	419.0	420.6	420.5	1.6	1.5



ZERO N.G.V.D. MILE	WATER SURFACE LAGRANGE LOCK (L)	MEREDOSIA
80.3	419.1	48.0
79.0	419.1	70.8
77.0	419.1	48.0

DATE	MIN POOL	DATE	MIN POOL
07 DEC 2020	420.8 (18200)	420.6 (18200)	420.6 (18200)
		420.8 (18200)	420.5 (18200)

DATE	MIN POOL	DATE	MIN POOL
07 DEC 2020	420.8 (18200)	420.6 (18200)	420.6 (18200)
		420.8 (18200)	420.5 (18200)

U.S. ARMY ENGINEER DIVISION	ILLINOIS RIVER BASIN
CORPS OF ENGINEERS	ILLINOIS RIVER
ST. LOUIS, MISSOURI	

PRE DREDGE SURVEY	RIVER MILES: 78.5 - 76.0

PLATE NUMBER
2

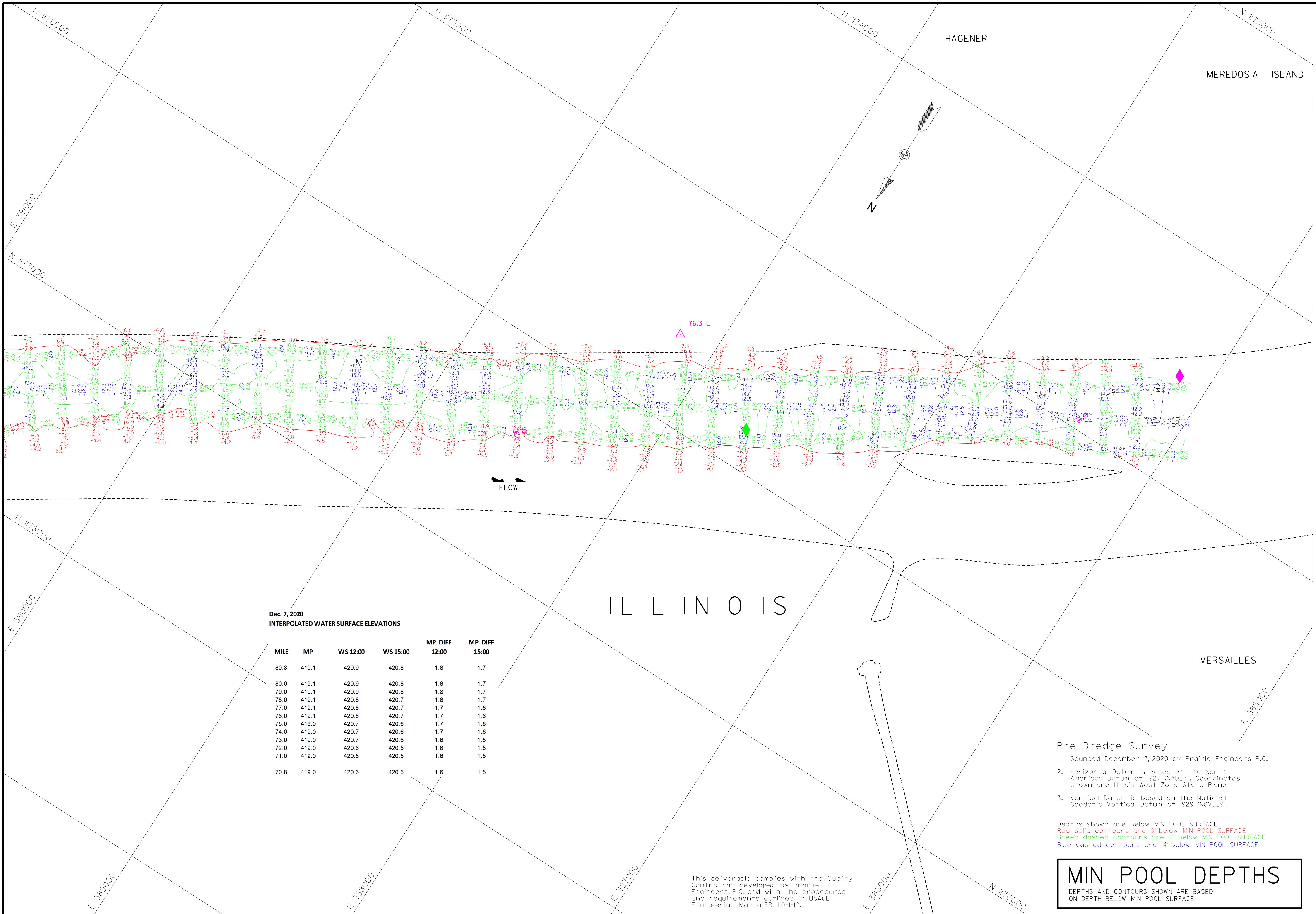
- Pre Dredge Survey
- Sounded December 7, 2020 by Prairie Engineers, P.C.
 - Horizontal Datum is based on the North American Datum of 1927 (NAD27). Coordinates shown are Illinois West Zone State Plane.
 - Vertical Datum is based on the National Geodetic Vertical Datum of 1929 (NGVD29).

Depths shown are below MIN POOL SURFACE
 Red solid contours are 9' below MIN POOL SURFACE
 Green dashed contours are 12' below MIN POOL SURFACE
 Blue dashed contours are 14' below MIN POOL SURFACE

MIN POOL DEPTHS
 DEPTHS AND CONTOURS SHOWN ARE BASED ON DEPTH BELOW MIN POOL SURFACE

This deliverable complies with the Quality Control Plan developed by Prairie Engineers, P.C. and with the procedures and requirements outlined in USACE Engineering Manual ER 1110-112.

VERSAILLES



Dec. 7, 2020
INTERPOLATED WATER SURFACE ELEVATIONS

MILE	MP	WS 12:00	WS 15:00	MP DIFF 12:00	MP DIFF 15:00
80.3	419.1	420.9	420.8	1.8	1.7
80.0	419.1	420.9	420.8	1.8	1.7
79.0	419.1	420.9	420.8	1.8	1.7
78.0	419.1	420.8	420.7	1.8	1.7
77.0	419.1	420.8	420.7	1.7	1.6
76.0	419.1	420.8	420.7	1.7	1.6
75.0	419.0	420.7	420.6	1.7	1.6
74.0	419.0	420.7	420.6	1.7	1.6
73.0	419.0	420.7	420.6	1.6	1.5
72.0	419.0	420.6	420.5	1.6	1.5
71.0	419.0	420.6	420.5	1.6	1.5
70.8	419.0	420.6	420.5	1.6	1.5

Pre Dredge Survey

- Sounded December 7, 2020 by Prairie Engineers, P.C.
- Horizontal Datum is based on the North American Datum of 1927 (NAD27). Coordinates shown are Illinois West Zone State Plane.
- Vertical Datum is based on the National Geodetic Vertical Datum of 1929 (NGVD29).

Depths shown are below MIN POOL SURFACE
 Red solid contours are 9' below MIN POOL SURFACE
 Green dashed contours are 12' below MIN POOL SURFACE
 Blue dashed contours are 14' below MIN POOL SURFACE

MIN POOL DEPTHS
 DEPTHS AND CONTOURS SHOWN ARE BASED ON DEPTH BELOW MIN POOL SURFACE

This deliverable complies with the Quality Control Plan developed by Prairie Engineers, P.C. and with the procedures and requirements outlined in USACE Engineering Manual ER 1110-1-12.

CAGE RECORD

ZERO N.G.V.D. MILE	WATER SURFACE	LAGRANGE LOCK (L)	MEREDOSIA
493.5	80.3	48.0	48.0
493.0	80.3	70.8	70.8
492.5	80.3	48.0	48.0

DATE: 7 DEC 2020
 ELEVATIONS ARE REFERRED TO NAVAL CONTOURS ARE BELOW 100 FT LOW WATER REFERENCE PLANE (LWRP) 1985 (17.5)

Survey Date: December 7, 2020
 SUBMITTED: Chief, Engr. Data, Mgmt. Sect.
 File Name: 076102.mxd
 Plot Date: 12/9/2020
 Plot Scale: 1" = 200'

Surveyed by: PRAIRIE ENGINEERS
 Drawn by: PCE
 Reviewed by: Chief, Engr. Data, Mgmt. Sect.
 APPROVED: Chief, Geospatial Branch

U.S. ARMY ENGINEER DIVISION
 CORPS OF ENGINEERS
 ST. LOUIS, MISSOURI
 ILLINOIS RIVER BASIN
 ILLINOIS RIVER

60 METERS
 0 200 400 FEET
 THE INFORMATION DEPICTED ON THIS MAP REPRESENTS THE RESULTS OF A SURVEY CONDUCTED UNDER THE GENERAL CONDITIONS EXISTING AT THAT TIME.
 PRE DREDGE SURVEY
 RIVER MILES: 78.5 - 76.0

PLATE NUMBER
 3