



| GAGE RECORD | |
|---------------|-------------------|
| WATER SURFACE | LAGRANGE LOCK (L) |
| ZERO N.G.V.D. | MEREDUSA |
| MILE | 48.0 |
| MP | 419.1 |
| DATE | 06 FEB 2021 |
| | 422.5 (10:00) |
| | 421.9 (14:00) |

| SURVEY DATA | |
|-------------|-----------|
| DATE | FILE NAME |
| 06 FEB 2021 | 08B22.mxd |
| 06 FEB 2021 | 08B22.mxd |

| APPROVED | |
|------------------------------|----------|
| BY | DATE |
| Chief, Eng. Data, Mgt. Sect. | 2/8/2021 |
| Chief, Geospatial Branch | 2/8/2021 |

U.S. ARMY ENGINEER DIVISION
CORPS OF ENGINEERS
ST. LOUIS, MISSOURI

ILLINOIS RIVER BASIN
ILLINOIS RIVER

PRE DREDGE SURVEY
RIVER MILES 79.5 - 76.0

PLATE NUMBER
1

Feb 06, 2021
INTERPOLATED WATER SURFACE ELEVATIONS

| MILE | MP | WS 10:00 | WS 14:00 | MP DIFF 10:00 | MP DIFF 14:00 |
|------|-------|----------|----------|---------------|---------------|
| 80.0 | 419.1 | 422.5 | 422.5 | -3.4 | -3.4 |
| 79.0 | 419.1 | 422.4 | 422.4 | -3.3 | -3.3 |
| 78.0 | 419.1 | 422.4 | 422.4 | -3.3 | -3.3 |
| 77.0 | 419.1 | 422.3 | 422.3 | -3.2 | -3.2 |
| 76.0 | 419.1 | 422.2 | 422.2 | -3.2 | -3.2 |
| 70.8 | 419.0 | 421.9 | 421.9 | -2.9 | -2.9 |

HAGENER

LAGRANGE ISLAND

FLOW

COOPERSTOWN

ILLINOIS

SOUTH BEARDSTOWN PUMPING STATION

LA GRANGE LOCK & DAM

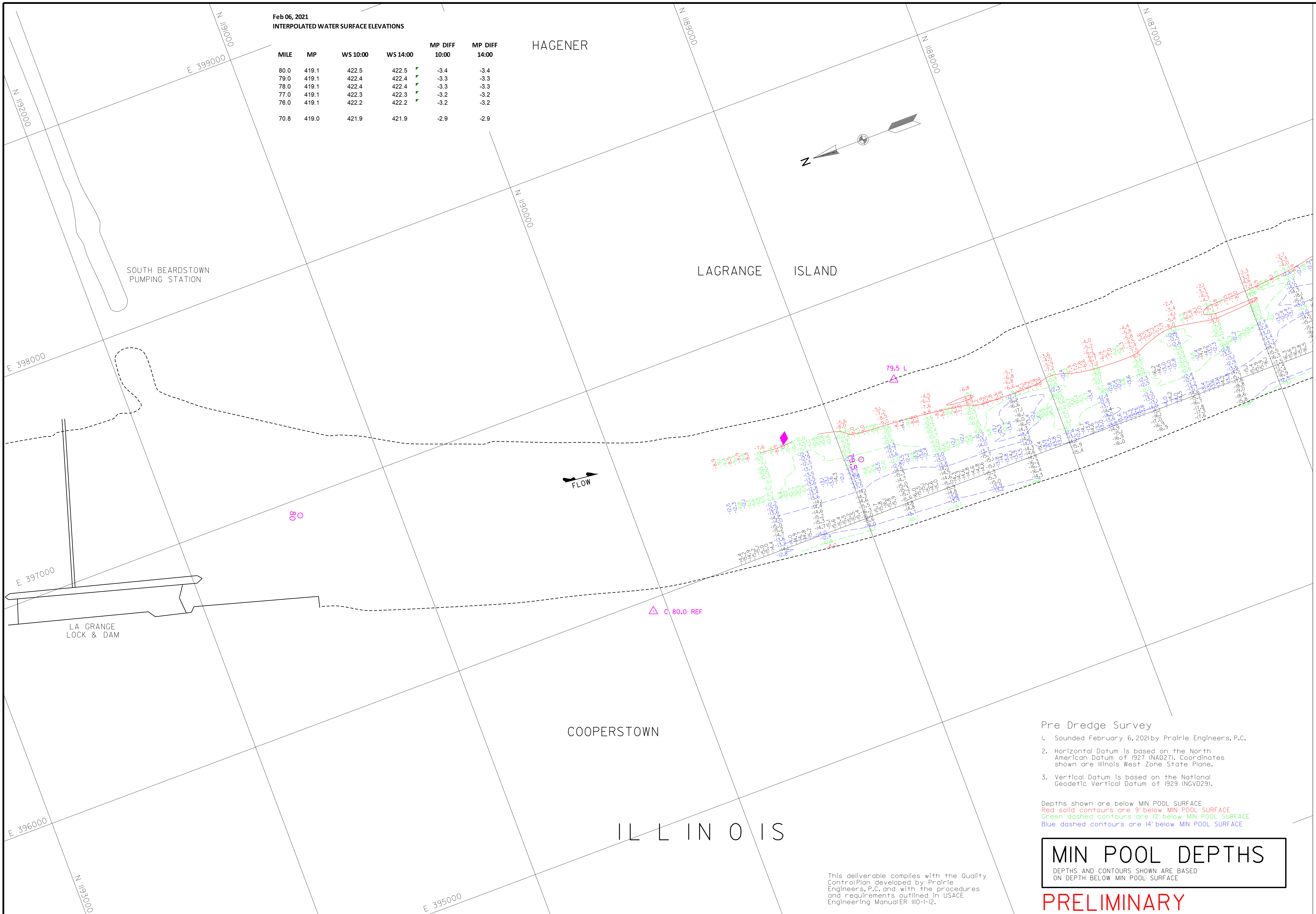
- Pre Dredge Survey
- Sounded February 6, 2021 by Prairie Engineers, P.C.
 - Horizontal Datum is based on the North American Datum of 1927 (NAD27). Coordinates shown are Illinois West Zone State Plane.
 - Vertical Datum is based on the National Geodetic Vertical Datum of 1929 (NGVD29).

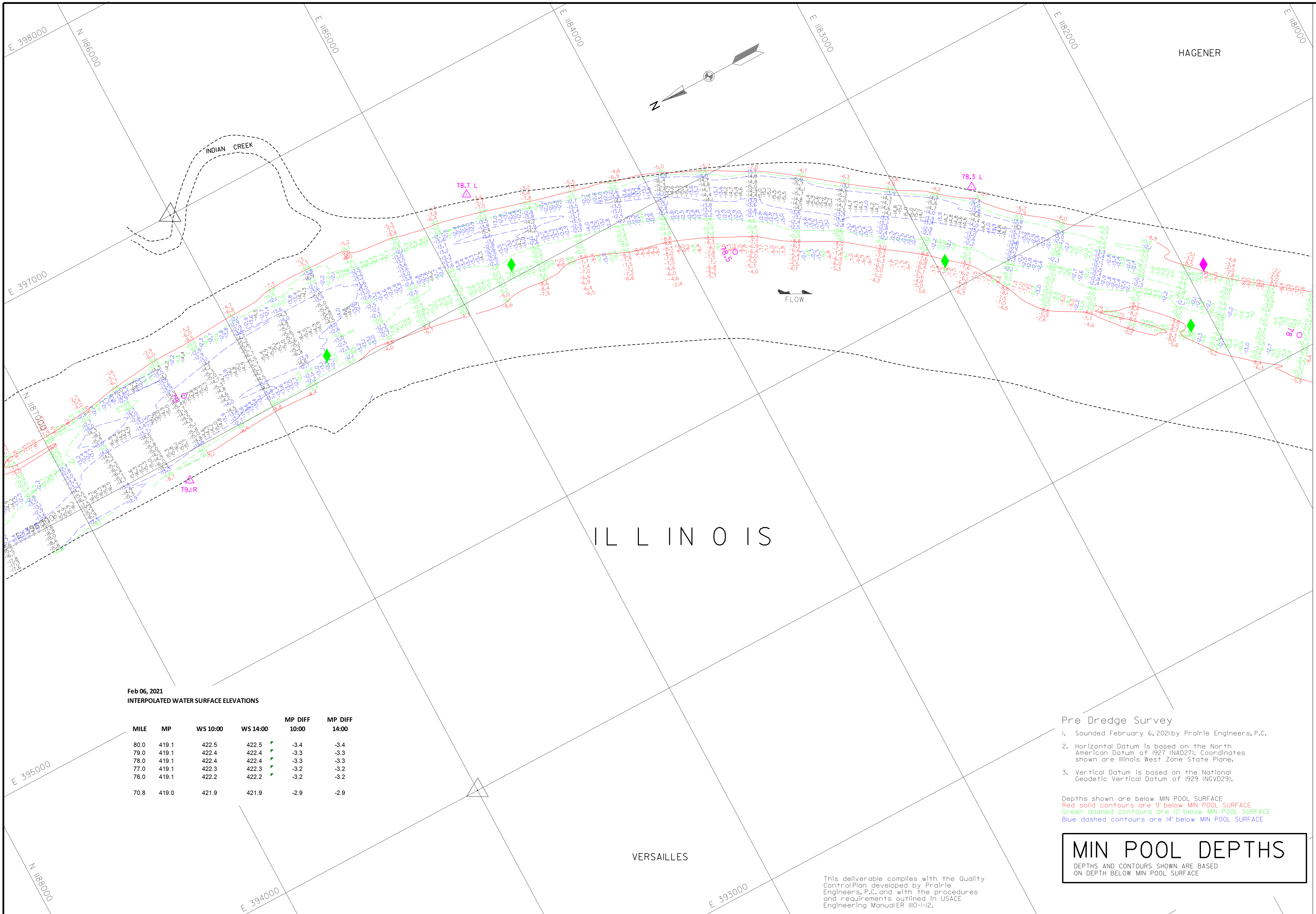
Depths shown are below MIN POOL SURFACE
Red solid contours are 9' below MIN POOL SURFACE
Green dashed contours are 12' below MIN POOL SURFACE
Blue dashed contours are 14' below MIN POOL SURFACE

MIN POOL DEPTHS
DEPTHS AND CONTOURS SHOWN ARE BASED ON DEPTH BELOW MIN POOL SURFACE

PRELIMINARY

This deliverable complies with the Quality Control Plan developed by Prairie Engineers, P.C. and with the procedures and requirements outlined in USACE Engineering Manual ER 110-1-12.





Feb 06, 2021
INTERPOLATED WATER SURFACE ELEVATIONS

| MILE | MP | WS 10:00 | WS 14:00 | MP DIFF 10:00 | MP DIFF 14:00 |
|------|-------|----------|----------|---------------|---------------|
| 80.0 | 419.1 | 422.5 | 422.5 | -3.4 | -3.4 |
| 79.0 | 419.1 | 422.4 | 422.4 | -3.3 | -3.3 |
| 78.0 | 419.1 | 422.4 | 422.4 | -3.3 | -3.3 |
| 77.0 | 419.1 | 422.3 | 422.3 | -3.2 | -3.2 |
| 76.0 | 419.1 | 422.2 | 422.2 | -3.2 | -3.2 |
| 70.8 | 419.0 | 421.9 | 421.9 | -2.9 | -2.9 |

Pre Dredge Survey

- Sounded February 6, 2021 by Prairie Engineers, P.C.
- Horizontal Datum is based on the North American Datum of 1927 (NAD27). Coordinates shown are Illinois West Zone State Plane.
- Vertical Datum is based on the National Geodetic Vertical Datum of 1929 (NGVD29).

Depths shown are below MIN POOL SURFACE
 Red solid contours are 9' below MIN POOL SURFACE
 Green dashed contours are 12' below MIN POOL SURFACE
 Blue dashed contours are 14' below MIN POOL SURFACE

MIN POOL DEPTHS
 DEPTHS AND CONTOURS SHOWN ARE BASED ON DEPTH BELOW MIN POOL SURFACE



| CASE RECORD | |
|---------------|---------------|
| ZERO N.G.V.D. | MEREDITH |
| MILE | 419.5 |
| MP | 80.3 |
| DATE | 06 FEB 2021 |
| | 422.5 (10:00) |
| | 421.9 (14:00) |

Survey Date: February 6, 2021
 SUBMITTED:
 Chief, Engr. Data Mgmt. Sect.
 File Name: 01880206.amf102021
 Plot Date: 2/8/2021
 Plot Scale: 1" = 200'

Supervised by:
 PRAIRIE ENGINEERS
 Drawn by:
 PRAIRIE ENGINEERS
 Reviewed by:
 PRAIRIE ENGINEERS
 APPROVED:
 Chief, Geospatial Branch

U.S. ARMY ENGINEER DIVISION
 CORPS OF ENGINEERS
 ST. LOUIS, MISSOURI
 ILLINOIS RIVER BASIN
 ILLINOIS RIVER

PRE DREDGE SURVEY
 RIVER MILES: 79.5 - 76.0

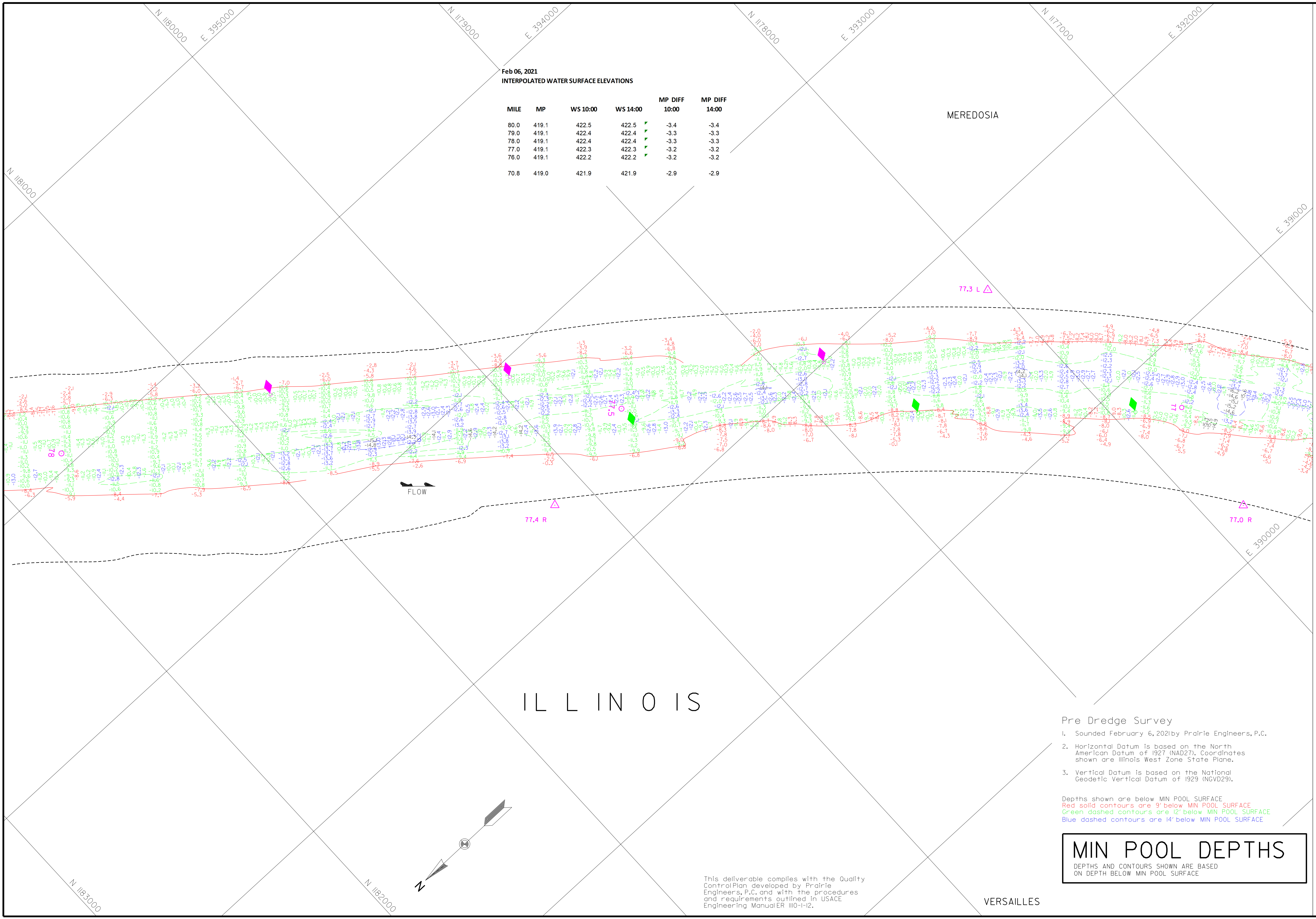
PLATE NUMBER
 2

This deliverable complies with the Quality Control Plan developed by Prairie Engineers, P.C. and with the procedures and requirements outlined in USACE Engineering Manual EM 1110-1-12.

Feb 06, 2021
INTERPOLATED WATER SURFACE ELEVATIONS

| MILE | MP | WS 10:00 | WS 14:00 | MP DIFF 10:00 | MP DIFF 14:00 |
|------|-------|----------|----------|---------------|---------------|
| 80.0 | 419.1 | 422.5 | 422.5 | -3.4 | -3.4 |
| 79.0 | 419.1 | 422.4 | 422.4 | -3.3 | -3.3 |
| 78.0 | 419.1 | 422.4 | 422.4 | -3.3 | -3.3 |
| 77.0 | 419.1 | 422.3 | 422.3 | -3.2 | -3.2 |
| 76.0 | 419.1 | 422.2 | 422.2 | -3.2 | -3.2 |
| 70.8 | 419.0 | 421.9 | 421.9 | -2.9 | -2.9 |

MEREDOSIA



I L L I N O I S

Pre Dredge Survey

- Sounded February 6, 2021 by Prairie Engineers, P.C.
- Horizontal Datum is based on the North American Datum of 1927 (NAD27). Coordinates shown are Illinois West Zone State Plane.
- Vertical Datum is based on the National Geodetic Vertical Datum of 1929 (NGVD29).

Depths shown are below MIN POOL SURFACE
 Red solid contours are 9' below MIN POOL SURFACE
 Green dashed contours are 12' below MIN POOL SURFACE
 Blue dashed contours are 14' below MIN POOL SURFACE

MIN POOL DEPTHS
 DEPTHS AND CONTOURS SHOWN ARE BASED ON DEPTH BELOW MIN POOL SURFACE

This deliverable complies with the Quality Control Plan developed by Prairie Engineers, P.C. and with the procedures and requirements outlined in USACE Engineering Manual ER 1110-1-2.

VERSAILLES

| ZERO N.G.V.D. | WATER SURFACE | LAGRANGE LOCK (L) | MEREDOSIA |
|---------------|---------------|-------------------|---------------|
| MILE | 419.5 | 80.3 | 70.8 |
| MP POOL | 419.1 | 419.1 | 419.0 |
| DATE | 06 FEB 2021 | 422.5 (10:00) | 421.9 (10:00) |
| | | 422.2 (14:00) | 421.9 (14:00) |

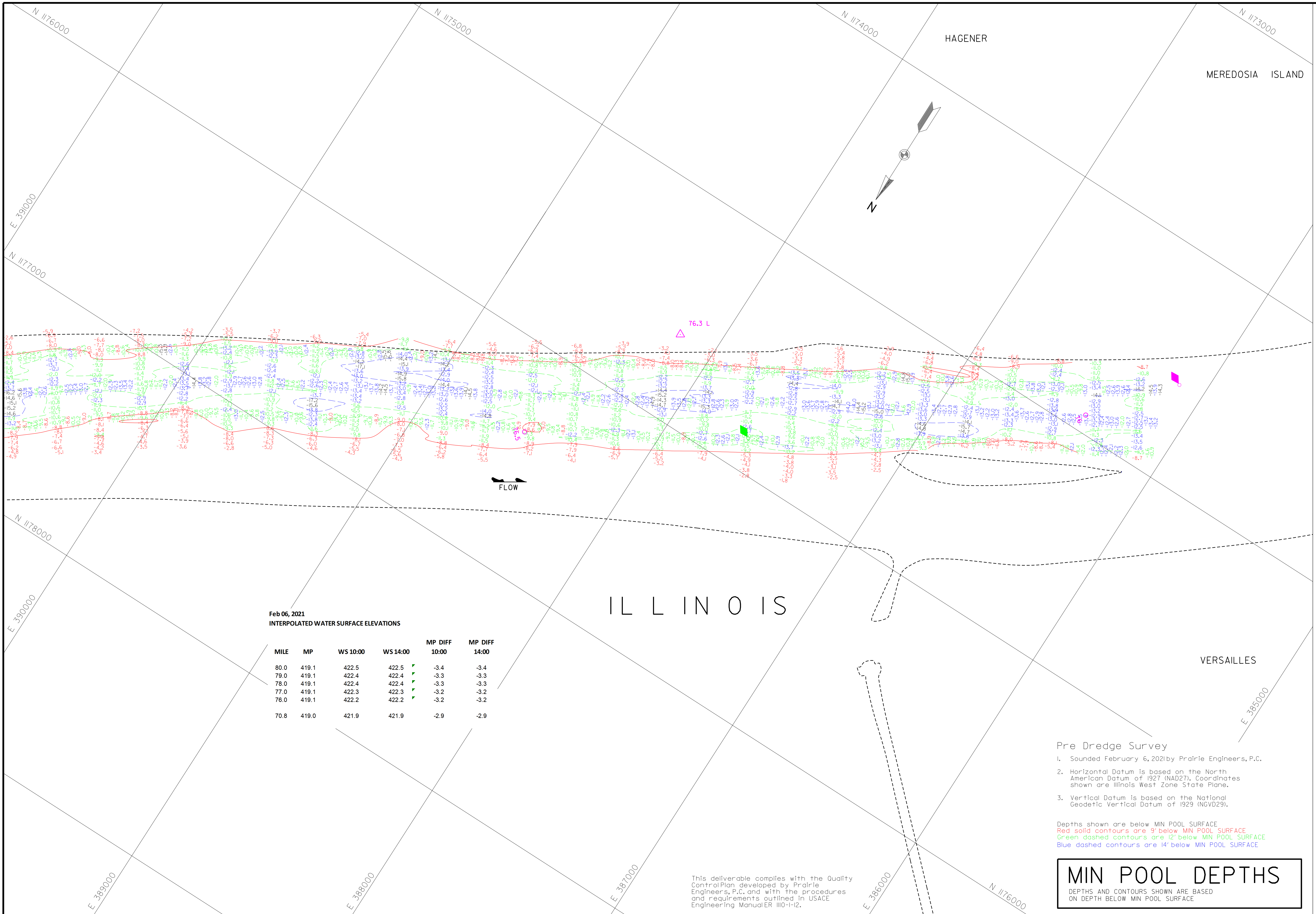
ELEVATIONS ARE REFERRED TO NAD27. CONTOURS ARE BELOW MP POOL SURFACE. WATER REFERENCE PLANE: LAKE POOL SURFACE (L.S.)

| | | |
|----------------------------------|---------------------|-------------------------------|
| Survey Date: February 6, 2021 | Submitted: | Chief, Engr. Data Mgmt. Sect. |
| Supervised by: PRAIRIE ENGINEERS | Reviewed by: | Chief, Geospatial Branch |
| Program by: PCE | APPROVED: | |
| File Name: 078802.mxd | Plot Date: 2/8/2021 | Plot Scale: 1" = 200' |

| | |
|--|--|
| U.S. ARMY ENGINEER DIVISION CORPS OF ENGINEERS ST. LOUIS, MISSOURI | ILLINOIS RIVER BASIN ILLINOIS RIVER |
|--|--|

| | |
|-----------------------------------|---|
| 60 METERS 200 FEET 400 FEET | PRE DREDGE SURVEY RIVER MILES: 79.5 - 76.0 |
|-----------------------------------|---|

| | |
|--------------|---|
| PLATE NUMBER | 3 |
|--------------|---|



Feb 06, 2021
INTERPOLATED WATER SURFACE ELEVATIONS

| MILE | MP | WS 10:00 | WS 14:00 | MP DIFF 10:00 | MP DIFF 14:00 |
|------|-------|----------|----------|---------------|---------------|
| 80.0 | 419.1 | 422.5 | 422.5 | -3.4 | -3.4 |
| 79.0 | 419.1 | 422.4 | 422.4 | -3.3 | -3.3 |
| 78.0 | 419.1 | 422.4 | 422.4 | -3.3 | -3.3 |
| 77.0 | 419.1 | 422.3 | 422.3 | -3.2 | -3.2 |
| 76.0 | 419.1 | 422.2 | 422.2 | -3.2 | -3.2 |
| 70.8 | 419.0 | 421.9 | 421.9 | -2.9 | -2.9 |

ILLINOIS

- Pre Dredge Survey
- Sounded February 6, 2021 by Prairie Engineers, P.C.
 - Horizontal Datum is based on the North American Datum of 1927 (NAD27). Coordinates shown are Illinois West Zone State Plane.
 - Vertical Datum is based on the National Geodetic Vertical Datum of 1929 (NGVD29).

Depths shown are below MIN POOL SURFACE
 Red solid contours are 3' below MIN POOL SURFACE
 Green dashed contours are 12' below MIN POOL SURFACE
 Blue dashed contours are 14' below MIN POOL SURFACE

MIN POOL DEPTHS

DEPTHS AND CONTOURS SHOWN ARE BASED ON DEPTH BELOW MIN POOL SURFACE

This deliverable complies with the Quality Control Plan developed by Prairie Engineers, P.C. and with the procedures and requirements outlined in USACE Engineering Manual ER 1110-1-12.

CAGE RECORD

| ZERO N.G.V.D. MILE | WATER SURFACE | LAGRANGE LOCK (L) | MEREDOSIA |
|--------------------|---------------|-------------------|-----------|
| 419.5 | 419.5 | 419.5 | 48.0 |
| 419.3 | 419.3 | 419.3 | 70.8 |
| 419.1 | 419.1 | 419.1 | 48.0 |

DATE: 6 FEB 2021
 422.5 (UGVD)
 421.9 (UGVD)
 421.9 (UGVD)

Elevations are referred to NAD83. Contours are below 1985. LOW WATER REFERENCE PLANE (LWRP) (1985) (7.5)

Survey Date: February 6, 2021
 SUBMITTED: Chief, Engr. Data, Maint. Sect.
 File Name: 018622.mxd
 Plot Date: 2/8/2021
 Plot Scale: 1" = 200'

Surveyed by: PRAIRIE ENGINEERS
 Drawn by: PCE
 Reviewed by: Chief, Engr. Data, Maint. Sect.
 APPROVED: Chief, Geospatial Branch

U.S. ARMY ENGINEER DIVISION
 CORPS OF ENGINEERS
 ST. LOUIS, MISSOURI
 ILLINOIS RIVER BASIN
 ILLINOIS RIVER

0 200 400 METERS
 0 200 400 FEET
 THE INFORMATION DEPICTED ON THIS MAP REPRESENTS THE RESULTS OF A SURVEY CONDUCTED UNDER THE PROVISIONS OF THE GENERAL CONDITIONS OF CONTRACT FOR THE ILLINOIS RIVER PROJECT.
 PPE DREDGE SURVEY
 RIVER MILES: 79.5 - 76.0

PLATE NUMBER
 4