



CASE RECORD		WATER SURFACE	VALLEY CITY	FLORENCE
ZERO N.G.V.D. MILE	480.0	480.0	480.0	400.0
MIN POOL DATE	48.3	48.3	48.3	56.0
	48.9	48.9	48.9	48.8
	420.3 (18400)	420.3 (18400)	420.3 (18400)	421.2 (18400)
	420.3 (18400)	420.3 (18400)	420.3 (18400)	421.2 (18400)

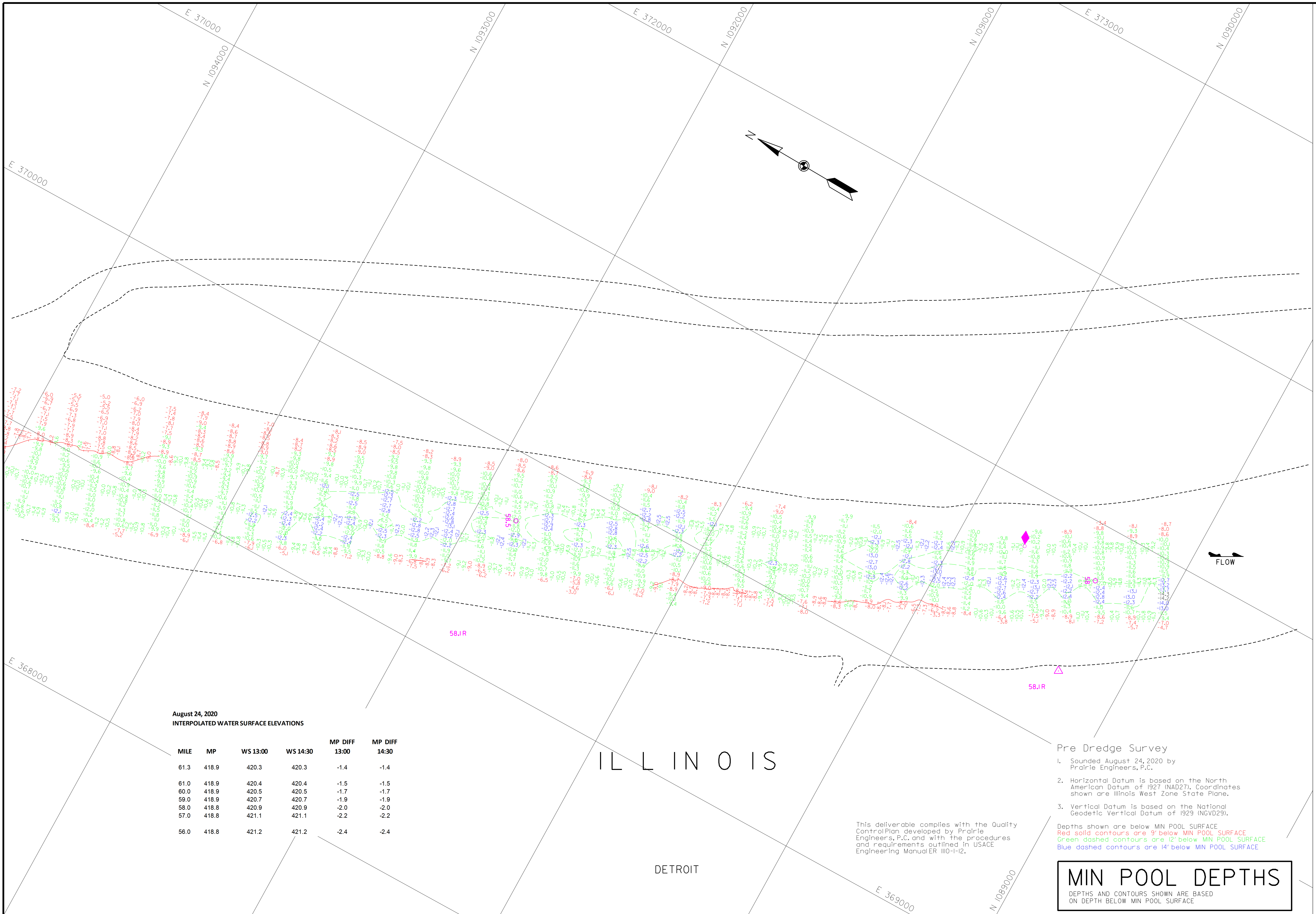
SURVEY DATA		DATE
SURVEY DATE	August 24, 2020	24 AUG 2020
FILE NAME	081802.mxd	
PROJECT	PRE DREDGE SURVEY	
SCALE	1" = 200'	

DRAWN BY		REVIEWED BY		APPROVED BY	
J.W.	J.W.	J.W.	J.W.	J.W.	J.W.
Chief, Eng. Data, Mgmt. Sect.		Chief, Eng. Data, Mgmt. Sect.		Chief, Geospatial Branch	

U.S. ARMY ENGINEER DIVISION  
CORPS OF ENGINEERS  
ST. LOUIS, MISSOURI  
ILLINOIS RIVER BASIN  
ILLINOIS RIVER

PRE DREDGE SURVEY  
RIVER MILES 59.3 - 57.8

PLATE NUMBER  
02



August 24, 2020  
INTERPOLATED WATER SURFACE ELEVATIONS

MILE	MP	WS 13:00	WS 14:30	MP DIFF 13:00	MP DIFF 14:30
61.3	418.9	420.3	420.3	-1.4	-1.4
61.0	418.9	420.4	420.4	-1.5	-1.5
60.0	418.9	420.5	420.5	-1.7	-1.7
59.0	418.9	420.7	420.7	-1.9	-1.9
58.0	418.8	420.9	420.9	-2.0	-2.0
57.0	418.8	421.1	421.1	-2.2	-2.2
56.0	418.8	421.2	421.2	-2.4	-2.4

This deliverable complies with the Quality Control Plan developed by Prairie Engineers, P.C. and with the procedures and requirements outlined in USACE Engineering Manual ER 1110-I-12.

- Pre Dredge Survey
- Sounded August 24, 2020 by Prairie Engineers, P.C.
  - Horizontal Datum is based on the North American Datum of 1927 (NAD27). Coordinates shown are Illinois West Zone State Plane.
  - Vertical Datum is based on the National Geodetic Vertical Datum of 1929 (NGVD29).

Depths shown are below MIN POOL SURFACE  
Red solid contours are 9' below MIN POOL SURFACE  
Green dashed contours are 12' below MIN POOL SURFACE  
Blue dashed contours are 14' below MIN POOL SURFACE

**MIN POOL DEPTHS**  
DEPTHS AND CONTOURS SHOWN ARE BASED ON DEPTH BELOW MIN POOL SURFACE