



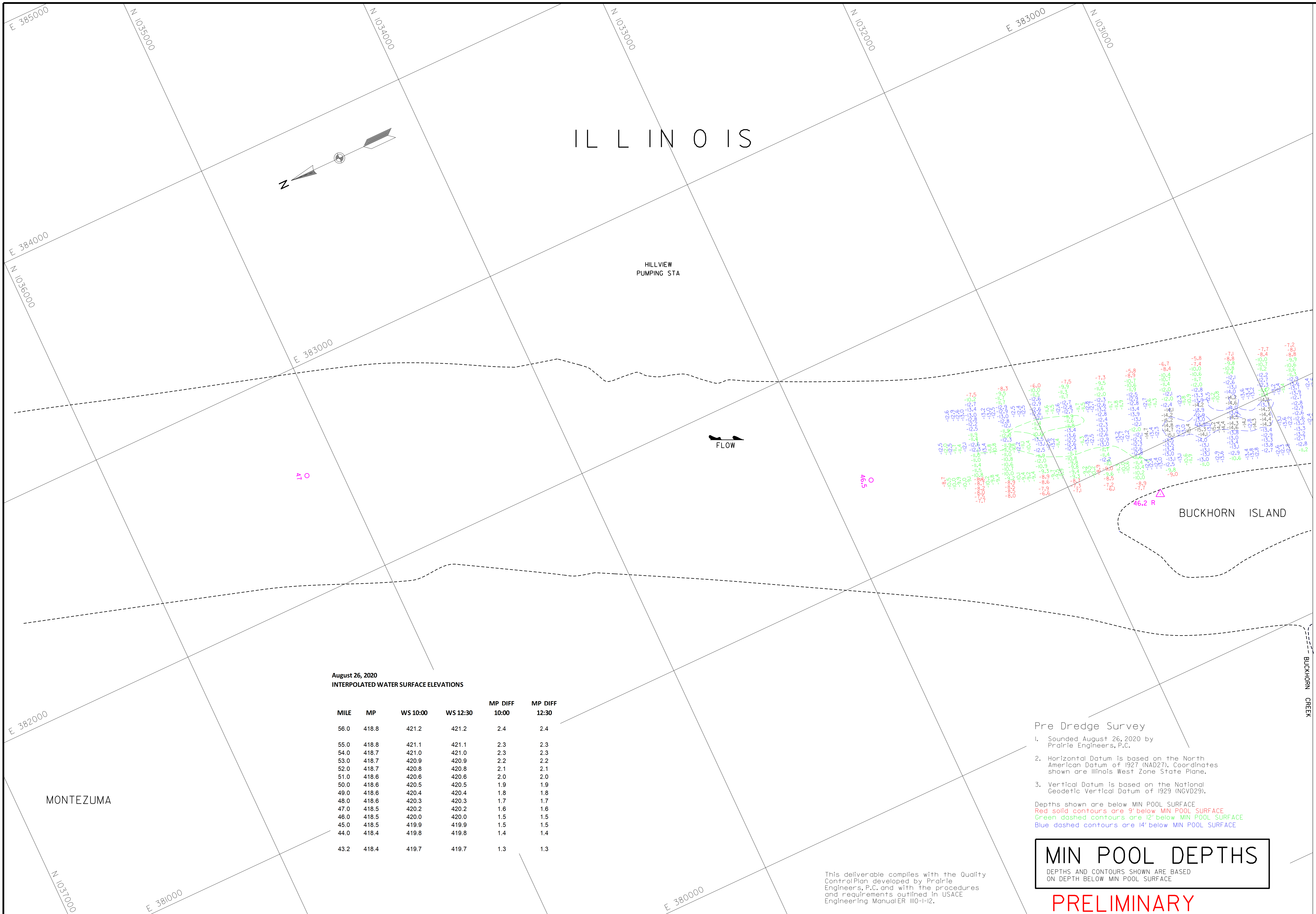
ZERO N.G.V.D. MILE	PEARL FLORENCE	400.0	400.0
MIN. POOL DATE	DATE	412.2 (10/00)	412.2 (10/00)
		418.8	418.8
		421.2 (10/00)	421.2 (10/00)
		421.2 (10/00)	421.2 (10/00)
Elevations are reported in NAD83. Contours are below (MSL) or water reference plane (MWD) (MSL) (7.5)			

Survey Date: August 26, 2020
Submitted: Chief, Engr. Data Mgmt. Sect.
File Name: 046620.mxd
Plot Date: 8/27/2020
Plot Scale: 1" = 200'

U.S. Army Engineer Division Corps of Engineers St. Louis, Missouri
Illinois River Basin Illinois River

Scale: 1" = 200'
PRE DREDGE SURVEY RIVER MILES 46.5 - 43.7

PLATE NUMBER  
01



August 26, 2020  
INTERPOLATED WATER SURFACE ELEVATIONS

MILE	MP	WS 10:00	WS 12:30	MP DIFF 10:00	MP DIFF 12:30
56.0	418.8	421.2	421.2	2.4	2.4
55.0	418.8	421.1	421.1	2.3	2.3
54.0	418.7	421.0	421.0	2.3	2.3
53.0	418.7	420.9	420.9	2.2	2.2
52.0	418.7	420.8	420.8	2.1	2.1
51.0	418.6	420.6	420.6	2.0	2.0
50.0	418.6	420.5	420.5	1.9	1.9
49.0	418.6	420.4	420.4	1.8	1.8
48.0	418.6	420.3	420.3	1.7	1.7
47.0	418.5	420.2	420.2	1.6	1.6
46.0	418.5	420.0	420.0	1.5	1.5
45.0	418.5	419.9	419.9	1.5	1.5
44.0	418.4	419.8	419.8	1.4	1.4
43.2	418.4	419.7	419.7	1.3	1.3

Pre Dredge Survey

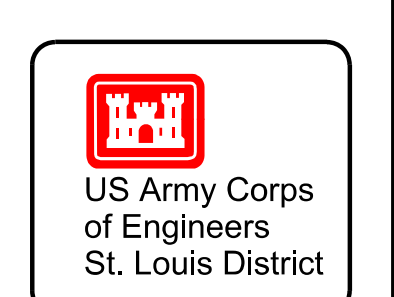
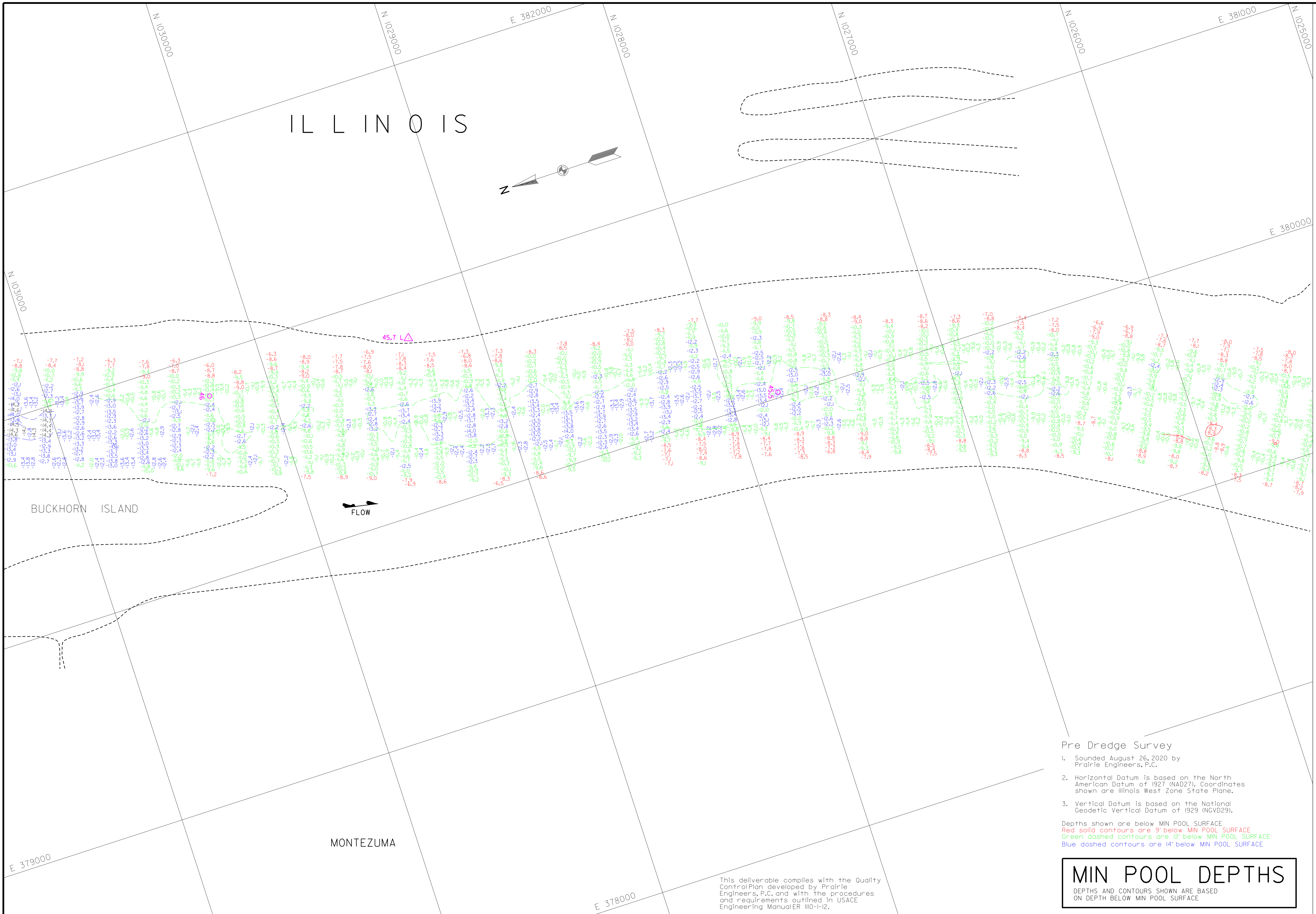
- Sounded August 26, 2020 by Prairie Engineers, P.C.
- Horizontal Datum is based on the North American Datum of 1927 (NAD27), Coordinates shown are Illinois West Zone State Plane.
- Vertical Datum is based on the National Geodetic Vertical Datum of 1929 (NGVD29).

Depths shown are below MIN POOL SURFACE  
 Red solid contours are 9' below MIN POOL SURFACE  
 Green dashed contours are 12' below MIN POOL SURFACE  
 Blue dashed contours are 14' below MIN POOL SURFACE

**MIN POOL DEPTHS**  
 DEPTHS AND CONTOURS SHOWN ARE BASED ON DEPTH BELOW MIN POOL SURFACE

**PRELIMINARY**

This deliverable complies with the Quality Control Plan developed by Prairie Engineers, P.C. and with the procedures and requirements outlined in USACE Engineering Manual ER 1110-I-12.



GAGE RECORD	
FLORENCE	PEARL
400.0	400.0
56.0	43.2
48.8	46.4
491.2 (1000)	48.7 (1000)
421.2 (1000)	46.7 (1000)
DATE	26 AUG 2020

ELEVATIONS ARE REFERRED TO NAZD. CONTOURS ARE BELOW MIN POOL SURFACE (ELEVATION 400.0)

Survey Date: August 26, 2020	Submitted:
Drawn by: PCE	Chief, Engr. Data, Mgmt. Sect.
Reviewed by:	File Name: 0461620.mxd
APPROVED:	Plot Date: 8/26/20
Chief, Geospatial Branch	Plot Scale: 1" = 200'

U.S. ARMY ENGINEER DIVISION  
CORPS OF ENGINEERS  
ST. LOUIS, MISSOURI

ILLINOIS RIVER BASIN  
ILLINOIS RIVER

60 METERS  
200 FEET  
400 FEET

THE INFORMATION DEPICTED ON THIS MAP REPRESENTS THE RESULTS OF A SURVEY CONDUCTED IN ACCORDANCE WITH THE GENERAL CONDITIONS EXISTING AT THAT TIME.

PRE DREDGE SURVEY  
RIVER MILES 46.5 - 43.7

PLATE NUMBER  
02

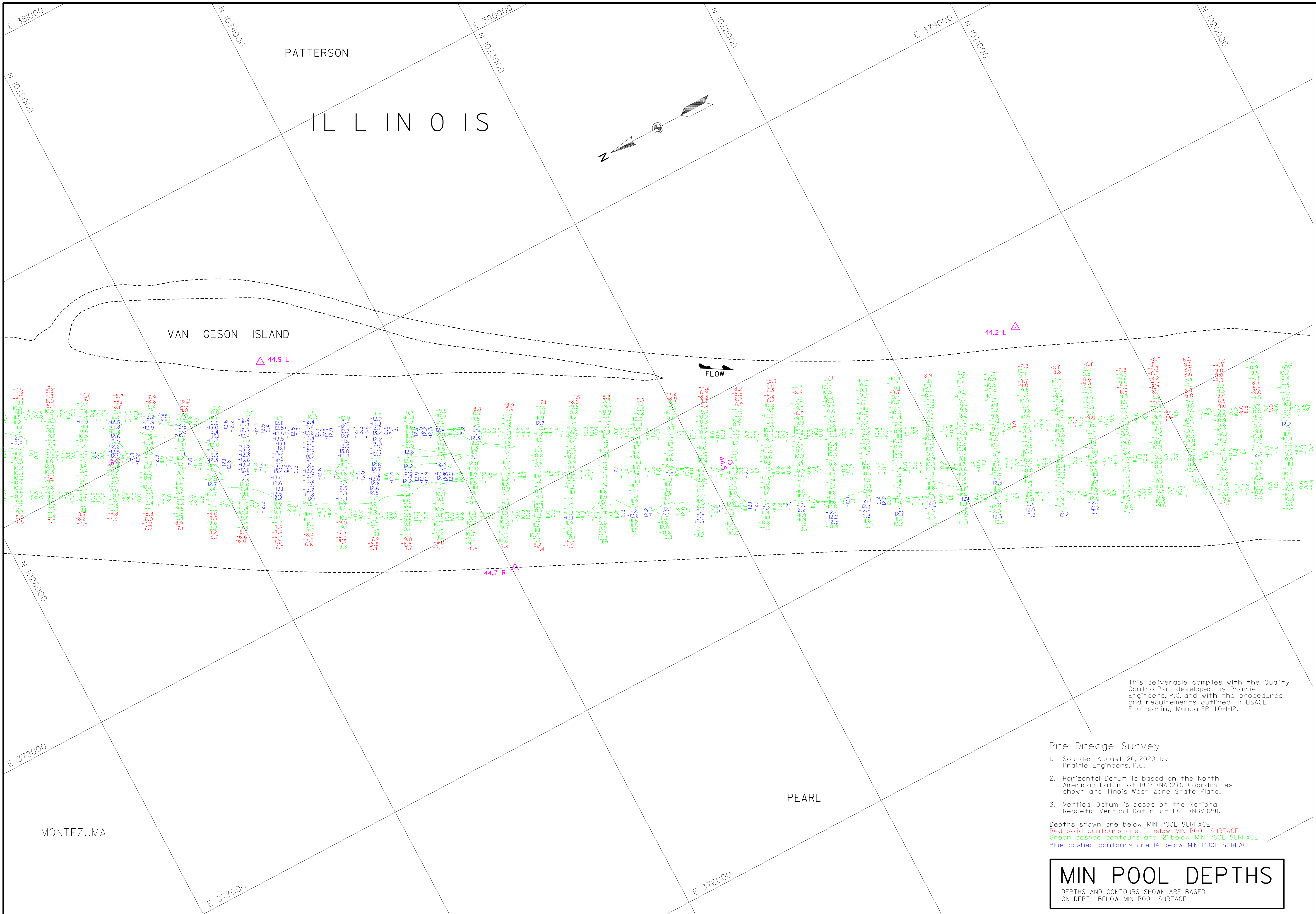
**Pre Dredge Survey**

- Sounded August 26, 2020 by Prairie Engineers, P.C.
- Horizontal Datum is based on the North American Datum of 1927 (NAD27). Coordinates shown are Illinois West Zone State Plane.
- Vertical Datum is based on the National Geodetic Vertical Datum of 1929 (NGVD29).

Depths shown are below MIN POOL SURFACE  
Red solid contours are 9' below MIN POOL SURFACE  
Green dashed contours are 12' below MIN POOL SURFACE  
Blue dashed contours are 14' below MIN POOL SURFACE

**MIN POOL DEPTHS**  
DEPTHS AND CONTOURS SHOWN ARE BASED ON DEPTH BELOW MIN POOL SURFACE

This deliverable complies with the Quality Control Plan developed by Prairie Engineers, P.C. and with the procedures and requirements outlined in USACE Engineering Manual EM 1110-1-12.



This deliverable complies with the Quality Control Plan developed by Prairie Engineers, P.C. and with the procedures and requirements outlined in USACE Engineering Manual ER 1110-I-12.

**Pre Dredge Survey**

- Sounded August 26, 2020 by Prairie Engineers, P.C.
- Horizontal Datum is based on the North American Datum of 1927 (NAD27). Coordinates shown are Illinois West Zone State Plane.
- Vertical Datum is based on the National Geodetic Vertical Datum of 1929 (NGVD29).

Depths shown are below MIN POOL SURFACE  
 Red solid contours are 9' below MIN POOL SURFACE  
 Green dashed contours are 12' below MIN POOL SURFACE  
 Blue dashed contours are 14' below MIN POOL SURFACE

**MIN POOL DEPTHS**  
 DEPTHS AND CONTOURS SHOWN ARE BASED ON DEPTH BELOW MIN POOL SURFACE



GAGE RECORD	
WATER SURFACE	FLORENCE
ZERO N.G.V.D.	PEARL
400.0	400.0
56.0	43.2
48.8	46.4
DATE	FILE NAME
26 AUG 2020	4212 (0300)
	4212 (0300)
	4637 (0200)

ELEVATIONS ARE REFERRED TO NAZD - CONTOURS ARE BELOW MIN POOL SURFACE

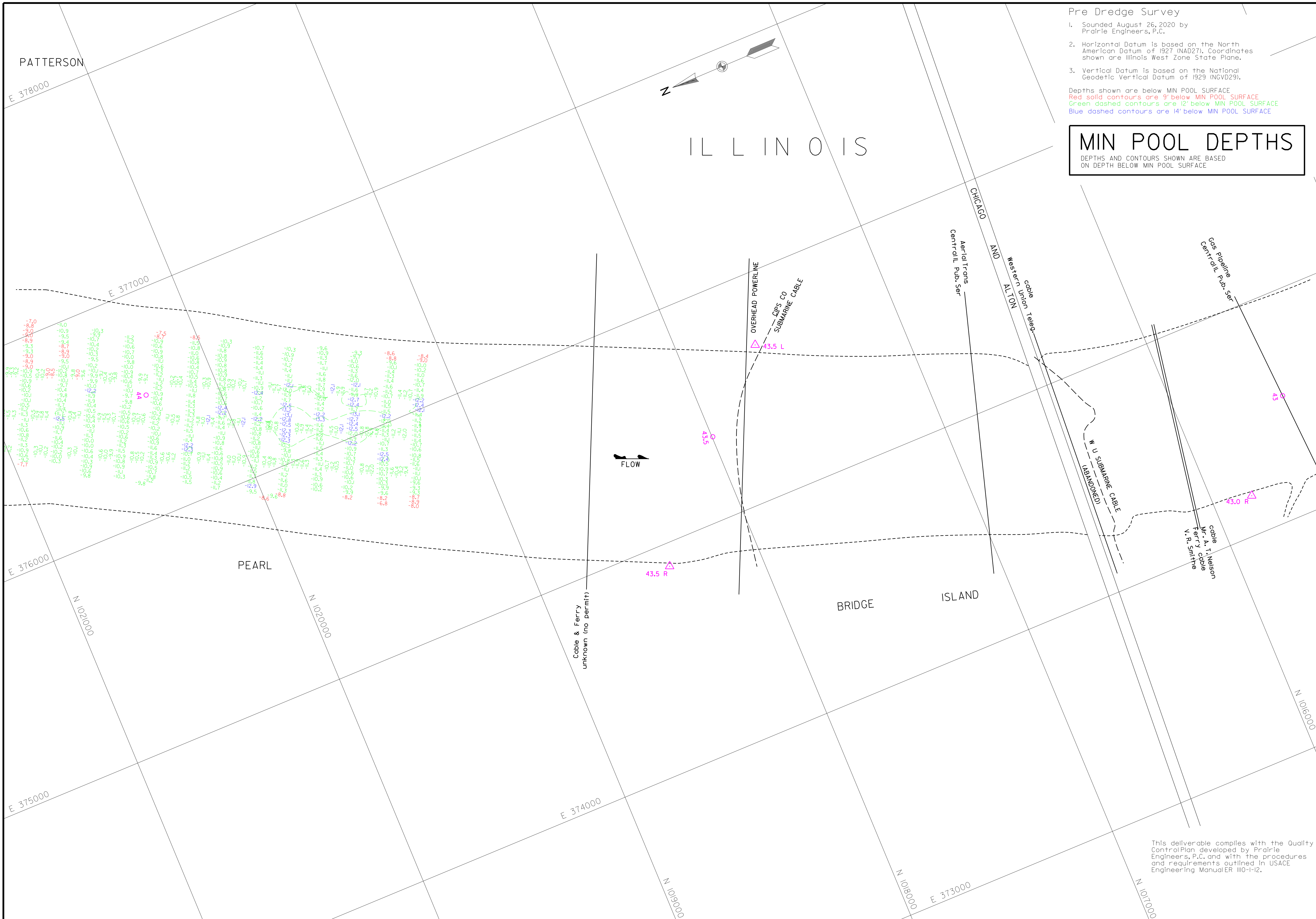
Survey Date: August 26, 2020	Submitted:
Drawn by: PCE	Chief, Engr. Data, Moot. Sect.
Reviewed by:	File Name: 0464820.mpr.dgn
APPROVED:	Plot Date: 8/27/2020
Chief, Geospatial Branch	Plot Scale: 1" = 200'

U.S. ARMY ENGINEER DIVISION  
 CORPS OF ENGINEERS  
 ST. LOUIS, MISSOURI  
 ILLINOIS RIVER BASIN  
 ILLINOIS RIVER

0 60 120 METERS  
 0 200 400 FEET  
 THE INFORMATION DEPICTED ON THIS MAP REPRESENTS THE RESULTS OF A SURVEY CONDUCTED UNDER THE GENERAL CONDITIONS EXISTING AT THAT TIME.

PPE DREDGE SURVEY  
 RIVER MILES 46.5 - 43.7

PLATE NUMBER  
 03



Pre Dredge Survey

1. Sounded August 26, 2020 by Prairie Engineers, P.C.
2. Horizontal Datum is based on the North American Datum of 1927 (NAD27). Coordinates shown are Illinois West Zone State Plane.
3. Vertical Datum is based on the National Geodetic Vertical Datum of 1929 (NGVD29).

Depths shown are below MIN POOL SURFACE  
 Red solid contours are 9' below MIN POOL SURFACE  
 Green dashed contours are 12' below MIN POOL SURFACE  
 Blue dashed contours are 14' below MIN POOL SURFACE

**MIN POOL DEPTHS**  
 DEPTHS AND CONTOURS SHOWN ARE BASED ON DEPTH BELOW MIN POOL SURFACE



PEARL	CHICAGO	AND	WESTERN UNION	W U
ZERO N.G.V.D.	400.0	400.0	400.0	400.0
WATER SURFACE	400.0	400.0	400.0	400.0
FLORENCE	400.0	400.0	400.0	400.0
PEARL	400.0	400.0	400.0	400.0
MILE	56.0	56.0	56.0	56.0
MIN POOL	488.8	488.8	488.8	488.8
DATE	26 AUG 2020	26 AUG 2020	26 AUG 2020	26 AUG 2020
	491.2 (1000)	491.2 (1000)	491.2 (1000)	491.2 (1000)
	492.2 (1000)	492.2 (1000)	492.2 (1000)	492.2 (1000)
	493.2 (1000)	493.2 (1000)	493.2 (1000)	493.2 (1000)
	494.2 (1000)	494.2 (1000)	494.2 (1000)	494.2 (1000)
	495.2 (1000)	495.2 (1000)	495.2 (1000)	495.2 (1000)
	496.2 (1000)	496.2 (1000)	496.2 (1000)	496.2 (1000)
	497.2 (1000)	497.2 (1000)	497.2 (1000)	497.2 (1000)
	498.2 (1000)	498.2 (1000)	498.2 (1000)	498.2 (1000)
	499.2 (1000)	499.2 (1000)	499.2 (1000)	499.2 (1000)
	500.2 (1000)	500.2 (1000)	500.2 (1000)	500.2 (1000)
	501.2 (1000)	501.2 (1000)	501.2 (1000)	501.2 (1000)
	502.2 (1000)	502.2 (1000)	502.2 (1000)	502.2 (1000)
	503.2 (1000)	503.2 (1000)	503.2 (1000)	503.2 (1000)
	504.2 (1000)	504.2 (1000)	504.2 (1000)	504.2 (1000)
	505.2 (1000)	505.2 (1000)	505.2 (1000)	505.2 (1000)
	506.2 (1000)	506.2 (1000)	506.2 (1000)	506.2 (1000)
	507.2 (1000)	507.2 (1000)	507.2 (1000)	507.2 (1000)
	508.2 (1000)	508.2 (1000)	508.2 (1000)	508.2 (1000)
	509.2 (1000)	509.2 (1000)	509.2 (1000)	509.2 (1000)
	510.2 (1000)	510.2 (1000)	510.2 (1000)	510.2 (1000)
	511.2 (1000)	511.2 (1000)	511.2 (1000)	511.2 (1000)
	512.2 (1000)	512.2 (1000)	512.2 (1000)	512.2 (1000)
	513.2 (1000)	513.2 (1000)	513.2 (1000)	513.2 (1000)
	514.2 (1000)	514.2 (1000)	514.2 (1000)	514.2 (1000)
	515.2 (1000)	515.2 (1000)	515.2 (1000)	515.2 (1000)
	516.2 (1000)	516.2 (1000)	516.2 (1000)	516.2 (1000)
	517.2 (1000)	517.2 (1000)	517.2 (1000)	517.2 (1000)
	518.2 (1000)	518.2 (1000)	518.2 (1000)	518.2 (1000)
	519.2 (1000)	519.2 (1000)	519.2 (1000)	519.2 (1000)
	520.2 (1000)	520.2 (1000)	520.2 (1000)	520.2 (1000)
	521.2 (1000)	521.2 (1000)	521.2 (1000)	521.2 (1000)
	522.2 (1000)	522.2 (1000)	522.2 (1000)	522.2 (1000)
	523.2 (1000)	523.2 (1000)	523.2 (1000)	523.2 (1000)
	524.2 (1000)	524.2 (1000)	524.2 (1000)	524.2 (1000)
	525.2 (1000)	525.2 (1000)	525.2 (1000)	525.2 (1000)
	526.2 (1000)	526.2 (1000)	526.2 (1000)	526.2 (1000)
	527.2 (1000)	527.2 (1000)	527.2 (1000)	527.2 (1000)
	528.2 (1000)	528.2 (1000)	528.2 (1000)	528.2 (1000)
	529.2 (1000)	529.2 (1000)	529.2 (1000)	529.2 (1000)
	530.2 (1000)	530.2 (1000)	530.2 (1000)	530.2 (1000)
	531.2 (1000)	531.2 (1000)	531.2 (1000)	531.2 (1000)
	532.2 (1000)	532.2 (1000)	532.2 (1000)	532.2 (1000)
	533.2 (1000)	533.2 (1000)	533.2 (1000)	533.2 (1000)
	534.2 (1000)	534.2 (1000)	534.2 (1000)	534.2 (1000)
	535.2 (1000)	535.2 (1000)	535.2 (1000)	535.2 (1000)
	536.2 (1000)	536.2 (1000)	536.2 (1000)	536.2 (1000)
	537.2 (1000)	537.2 (1000)	537.2 (1000)	537.2 (1000)
	538.2 (1000)	538.2 (1000)	538.2 (1000)	538.2 (1000)
	539.2 (1000)	539.2 (1000)	539.2 (1000)	539.2 (1000)
	540.2 (1000)	540.2 (1000)	540.2 (1000)	540.2 (1000)
	541.2 (1000)	541.2 (1000)	541.2 (1000)	541.2 (1000)
	542.2 (1000)	542.2 (1000)	542.2 (1000)	542.2 (1000)
	543.2 (1000)	543.2 (1000)	543.2 (1000)	543.2 (1000)
	544.2 (1000)	544.2 (1000)	544.2 (1000)	544.2 (1000)
	545.2 (1000)	545.2 (1000)	545.2 (1000)	545.2 (1000)
	546.2 (1000)	546.2 (1000)	546.2 (1000)	546.2 (1000)
	547.2 (1000)	547.2 (1000)	547.2 (1000)	547.2 (1000)
	548.2 (1000)	548.2 (1000)	548.2 (1000)	548.2 (1000)
	549.2 (1000)	549.2 (1000)	549.2 (1000)	549.2 (1000)
	550.2 (1000)	550.2 (1000)	550.2 (1000)	550.2 (1000)
	551.2 (1000)	551.2 (1000)	551.2 (1000)	551.2 (1000)
	552.2 (1000)	552.2 (1000)	552.2 (1000)	552.2 (1000)
	553.2 (1000)	553.2 (1000)	553.2 (1000)	553.2 (1000)
	554.2 (1000)	554.2 (1000)	554.2 (1000)	554.2 (1000)
	555.2 (1000)	555.2 (1000)	555.2 (1000)	555.2 (1000)
	556.2 (1000)	556.2 (1000)	556.2 (1000)	556.2 (1000)
	557.2 (1000)	557.2 (1000)	557.2 (1000)	557.2 (1000)
	558.2 (1000)	558.2 (1000)	558.2 (1000)	558.2 (1000)
	559.2 (1000)	559.2 (1000)	559.2 (1000)	559.2 (1000)
	560.2 (1000)	560.2 (1000)	560.2 (1000)	560.2 (1000)
	561.2 (1000)	561.2 (1000)	561.2 (1000)	561.2 (1000)
	562.2 (1000)	562.2 (1000)	562.2 (1000)	562.2 (1000)
	563.2 (1000)	563.2 (1000)	563.2 (1000)	563.2 (1000)
	564.2 (1000)	564.2 (1000)	564.2 (1000)	564.2 (1000)
	565.2 (1000)	565.2 (1000)	565.2 (1000)	565.2 (1000)
	566.2 (1000)	566.2 (1000)	566.2 (1000)	566.2 (1000)
	567.2 (1000)	567.2 (1000)	567.2 (1000)	567.2 (1000)
	568.2 (1000)	568.2 (1000)	568.2 (1000)	568.2 (1000)
	569.2 (1000)	569.2 (1000)	569.2 (1000)	569.2 (1000)
	570.2 (1000)	570.2 (1000)	570.2 (1000)	570.2 (1000)
	571.2 (1000)	571.2 (1000)	571.2 (1000)	571.2 (1000)
	572.2 (1000)	572.2 (1000)	572.2 (1000)	572.2 (1000)
	573.2 (1000)	573.2 (1000)	573.2 (1000)	573.2 (1000)
	574.2 (1000)	574.2 (1000)	574.2 (1000)	574.2 (1000)
	575.2 (1000)	575.2 (1000)	575.2 (1000)	575.2 (1000)
	576.2 (1000)	576.2 (1000)	576.2 (1000)	576.2 (1000)
	577.2 (1000)	577.2 (1000)	577.2 (1000)	577.2 (1000)
	578.2 (1000)	578.2 (1000)	578.2 (1000)	578.2 (1000)
	579.2 (1000)	579.2 (1000)	579.2 (1000)	579.2 (1000)
	580.2 (1000)	580.2 (1000)	580.2 (1000)	580.2 (1000)
	581.2 (1000)	581.2 (1000)	581.2 (1000)	581.2 (1000)
	582.2 (1000)	582.2 (1000)	582.2 (1000)	582.2 (1000)
	583.2 (1000)	583.2 (1000)	583.2 (1000)	583.2 (1000)
	584.2 (1000)	584.2 (1000)	584.2 (1000)	584.2 (1000)
	585.2 (1000)	585.2 (1000)	585.2 (1000)	585.2 (1000)
	586.2 (1000)	586.2 (1000)	586.2 (1000)	586.2 (1000)
	587.2 (1000)	587.2 (1000)	587.2 (1000)	587.2 (1000)
	588.2 (1000)	588.2 (1000)	588.2 (1000)	588.2 (1000)
	589.2 (1000)	589.2 (1000)	589.2 (1000)	589.2 (1000)
	590.2 (1000)	590.2 (1000)	590.2 (1000)	590.2 (1000)
	591.2 (1000)	591.2 (1000)	591.2 (1000)	591.2 (1000)
	592.2 (1000)	592.2 (1000)	592.2 (1000)	592.2 (1000)
	593.2 (1000)	593.2 (1000)	593.2 (1000)	593.2 (1000)
	594.2 (1000)	594.2 (1000)	594.2 (1000)	594.2 (1000)
	595.2 (1000)	595.2 (1000)	595.2 (1000)	595.2 (1000)
	596.2 (1000)	596.2 (1000)	596.2 (1000)	596.2 (1000)
	597.2 (1000)	597.2 (1000)	597.2 (1000)	597.2 (1000)
	598.2 (1000)	598.2 (1000)	598.2 (1000)	598.2 (1000)
	599.2 (1000)	599.2 (1000)	599.2 (1000)	599.2 (1000)
	600.2 (1000)	600.2 (1000)	600.2 (1000)	600.2 (1000)

Survey Date: August 26, 2020	Submitted: Chief, Engr. Data, Mgmt. Sect.
Supervised by: PRAIRIE ENGINEERS	Reviewed by: File Name: 0461620.mpr16.mpr
Drawn by: PCE By: JLM	APPROVED: Plot Date: 8/27/2020
Chief, Engr. Data, Mgmt. Sect.	Chief, Geospatial Branch

U.S. ARMY ENGINEER DIVISION  
 CORPS OF ENGINEERS  
 ST. LOUIS, MISSOURI  
 ILLINOIS RIVER BASIN  
 ILLINOIS RIVER

PRE DREDGE SURVEY  
 RIVER MILES 46.5 - 43.7

PLATE NUMBER  
 04

This deliverable complies with the Quality Control Plan developed by Prairie Engineers, P.C. and with the procedures and requirements outlined in USACE Engineering Manual ER 1110-1-12.