

ILLINOIS

May 22, 2020  
INTERPOLATED WATER SURFACE ELEVATIONS

MILE	MP	WS 10:00	WS 16:00	MP DIFF 10:00	MP DIFF 16:00
300.0	449.1	458.3	458.3	9.2	9.2
298.0	449.1	457.9	457.9	8.8	8.8
298.0	449.1	457.5	457.5	8.5	8.5
297.0	449.0	457.2	457.2	8.1	8.1

Comprehensive Survey

- Sounded May 22, 2020 by Prairie Engineers, P.C.
- Horizontal Datum is based on the North American Datum of 1983 (NAD83(2011)). Coordinates shown are Missouri East Zone State Plane.
- Vertical Datum is based on the National Geodetic Vertical Datum of 1929 (NGVD29).

Depths shown are below MINIMUM POOL  
 Depths shown in red are 9' below MINIMUM POOL  
 Depths shown in green are 12' below MINIMUM POOL  
 Depths shown in blue are 14' below MINIMUM POOL

**MIN POOL**  
 DEPTHS AND CONTOURS SHOWN ARE BASED ON DEPTH BELOW MINIMUM POOL



US Army Corps of Engineers  
St. Louis District

WATER SURFACE	L & D	22 (LOWER)	MINUDY
ZERO N.G.V.D.	446.1	449.1	449.1
MILE	300.2	293.0	293.0
MIN POOL	449.1	449.1	449.1
	22 MAY 2020	458.7 (16:00)	458.7 (16:00)

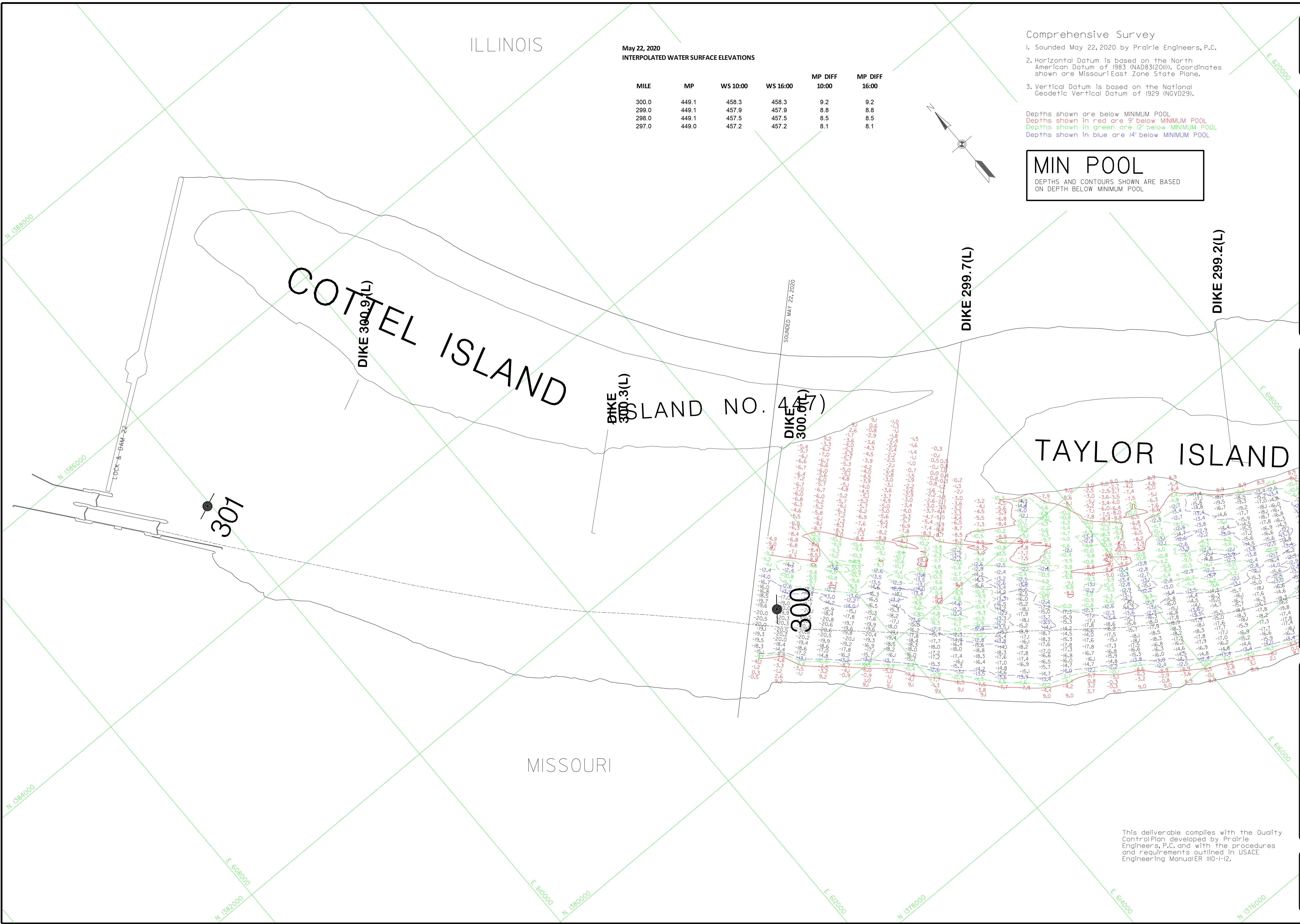
Survey Date	May 22, 2020
Submitted by:	Chief, Engr. Data Mgmt. Sect.
File:	SP01_300_213.mxd
Plot Date:	7/31/2020
Plot Scale:	1"=400'

U.S. Army Engineer Division	Corps of Engineers	St. Louis, Missouri
Upper Mississippi River Basin <td>Mississippi River</td> <td></td>	Mississippi River	

U.S. Army Engineer Division	Corps of Engineers	St. Louis, Missouri
Upper Mississippi River Basin <td>Mississippi River</td> <td></td>	Mississippi River	

240 METERS  
 800 FEET  
 400 FEET  
 0  
 THE INFORMATION DEPICTED ON THIS MAP REPRESENTS THE RESULTS OF THE SURVEY CONDUCTED BY PRAIRIE ENGINEERS, P.C. AND WITH THE PROCEDURES AND REQUIREMENTS OUTLINED IN USACE ENGINEERING MANUAL ER 1110-112.

COMPREHENSIVE SURVEY  
 MILE: 300.0 - 195.0  
 PLATE NUMBER  
 01



May 22, 2020  
INTERPOLATED WATER SURFACE ELEVATIONS

MILE	MP	WS 10:00	WS 16:00	MP DIFF 10:00	MP DIFF 16:00
300.0	449.1	458.3	458.3	9.2	9.2
299.0	449.1	457.9	457.9	8.8	8.8
298.0	449.1	457.5	457.5	8.5	8.5
297.0	449.0	457.2	457.2	8.1	8.1

Comprehensive Survey  
1. Sounded May 22, 2020 by Prairie Engineers, P.C.  
2. Horizontal Datum is based on the North American Datum of 1983 (NAD83(2011)). Coordinates shown are Missouri East Zone State Plane.  
3. Vertical Datum is based on the National Geodetic Vertical Datum of 1929 (NGVD29).



Depths shown are below MINIMUM POOL  
Depths shown in red are 9' below MINIMUM POOL  
Depths shown in green are 12' below MINIMUM POOL  
Depths shown in blue are 14' below MINIMUM POOL

**MIN POOL**  
DEPTHS AND CONTOURS SHOWN ARE BASED ON DEPTH BELOW MINIMUM POOL

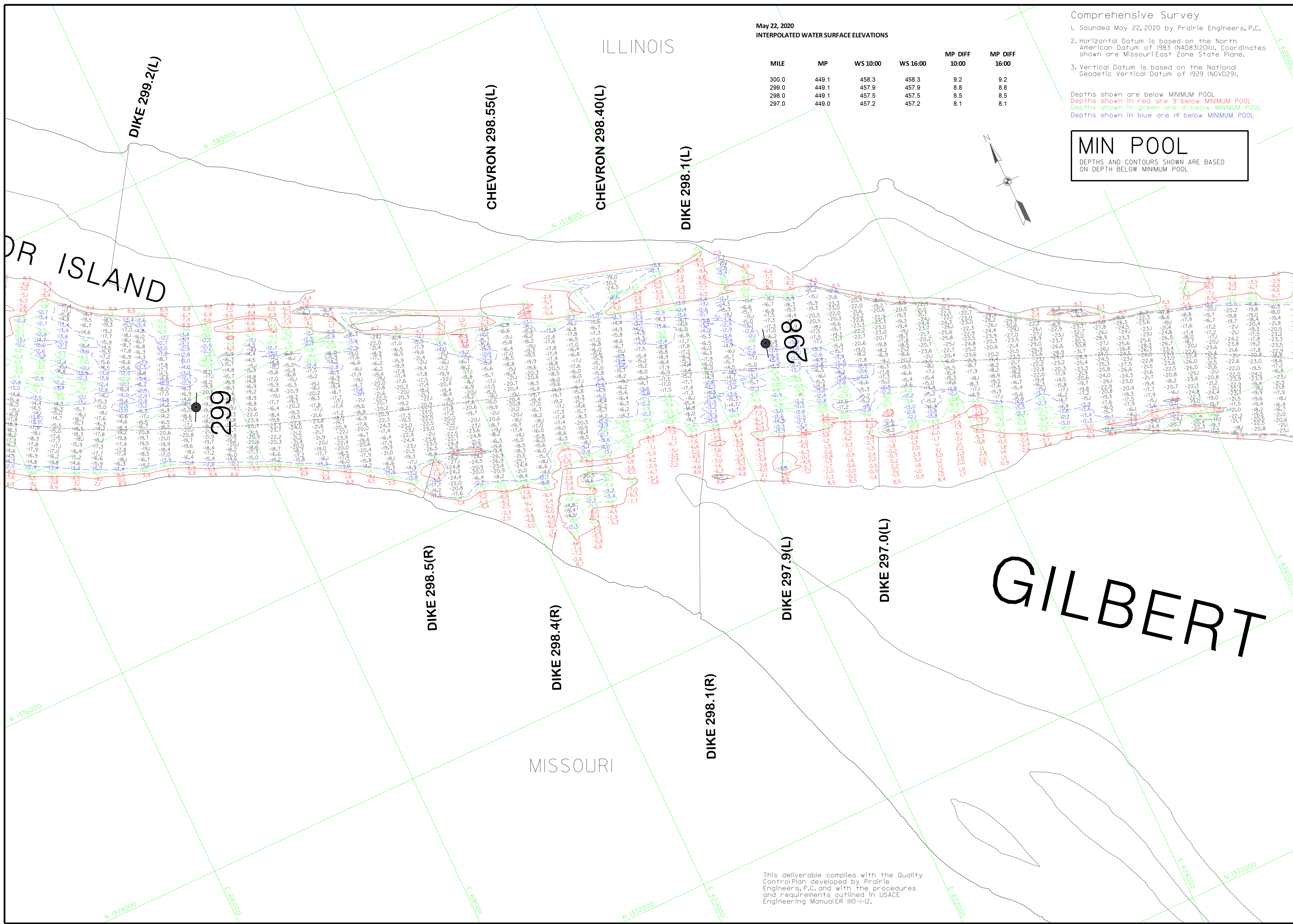
GAGE RECORD	
WATER SURFACE	L & D 22 (LOWE)
ZERO N.G.V.D.	446.1
MILE	30.2
MIN POOL	449.1
DATE	22 MAY 2020
FILE	458.7 (05/20)
PLANT	458.7 (06/20)

Survey Date: May 22, 2020  
SUBMITTED: Chief, Engr. Data Mgmt. Sect.  
Drawn by: JLM  
Reviewed by: Chief, Geospatial Branch  
APPROVED: Chief, Geospatial Branch

U.S. ARMY ENGINEER DIVISION  
CORPS OF ENGINEERS  
ST. LOUIS, MISSOURI  
UPPER MISSISSIPPI RIVER BASIN  
MISSISSIPPI RIVER

240 METERS  
800 FEET  
THE INFORMATION DEPICTED ON THIS MAP REPRESENTS THE RESULTS OF A SURVEY CONDUCTED UNDER THE GENERAL CONDITIONS EXISTING AT THAT TIME.  
COMPREHENSIVE SURVEY  
MILE: 300.0 - 195.0

PLATE NUMBER  
02



This deliverable complies with the Quality Control Plan developed by Prairie Engineers, P.C. and with the procedures and requirements outlined in USACE Engineering Manual ER 110-1-12.

May 22, 2020  
INTERPOLATED WATER SURFACE ELEVATIONS

MILE	MP	WS 10:00	WS 16:00	MP DIFF 10:00	MP DIFF 16:00
300.0	449.1	458.3	458.3	9.2	9.2
299.0	449.1	457.9	457.9	8.8	8.8
298.0	449.1	457.5	457.5	8.5	8.5
297.0	449.0	457.2	457.2	8.1	8.1

ILLINOIS

CINCINNATI LANDING

May 21, 2020  
INTERPOLATED WATER SURFACE ELEVATIONS

MILE	MP	WS 1000	WS 1600	MP DIFF 1000	MP DIFF 1600
297.0	449.0	457.4	457.4	8.3	8.3
296.0	449.0	457.0	457.0	8.0	8.0
295.0	449.0	456.7	456.7	7.6	7.6
294.0	449.0	456.3	456.3	7.3	7.3
293.0	449.0	456.0	456.0	7.0	7.0
292.0	449.0	455.5	455.5	6.5	6.5



LOUISIANA	MINY	LOUISIANA
437.3	449.1	437.3
282.9	30.2	282.9
448.8	449.1	448.8
458.9 (IGC01)	458.8 (IGC01)	458.9 (IGC01)
458.9 (IGC02)	458.8 (IGC02)	458.9 (IGC02)

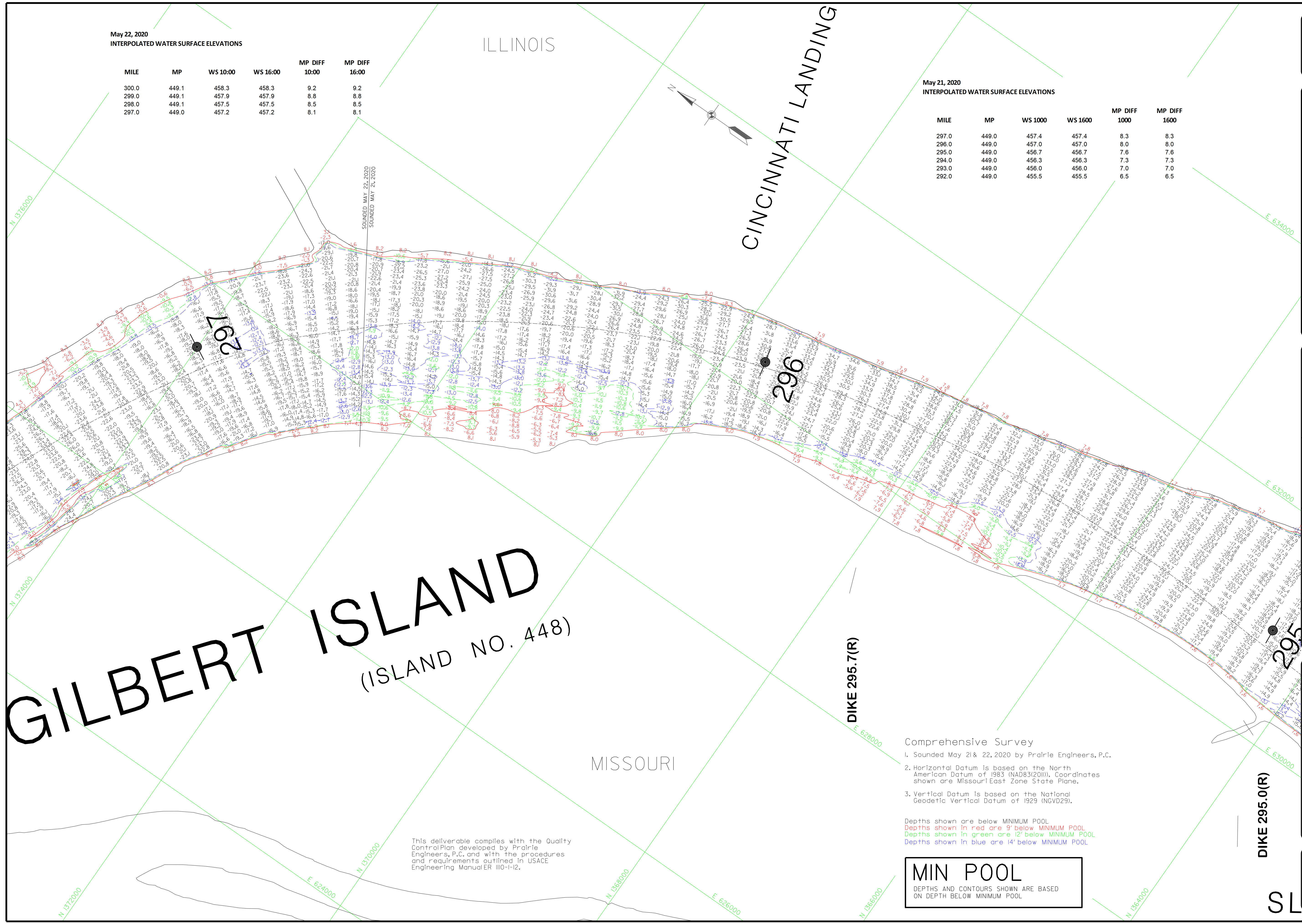
Survey Date: May 21, 2020  
SUBMITTED: May 21, 2020  
Chief, Engr. Data Mgmt. Sect.  
File: SHPL300.274.mxd  
Plot Date: 7/31/2020  
Plot Scale: 1"=400'

Surveyed by: PRAIRIE ENGINEERS  
Drawn by: JLM  
Reviewed by: JLM  
APPROVED: Chief, Geospatial Branch

U.S. ARMY ENGINEER DIVISION  
CORPS OF ENGINEERS  
ST. LOUIS, MISSOURI  
UPPER MISSISSIPPI RIVER BASIN  
MISSISSIPPI RIVER

240 METERS  
800 FEET  
400 FEET  
0  
THE INFORMATION DEPICTED ON THIS MAP REPRESENTS THE RESULTS OF A SURVEY CONDUCTED UNDER THE GENERAL CONDITIONS EXISTING AT THAT TIME.  
COMPREHENSIVE SURVEY  
MILE: 300.0 - 195.0

PLATE NUMBER  
03



GILBERT ISLAND  
(ISLAND NO. 448)

MISSOURI

DIKE 295.7(R)

- Comprehensive Survey
- Sounded May 21 & 22, 2020 by Prairie Engineers, P.C.
  - Horizontal Datum is based on the North American Datum of 1983 (NAD83(2011)). Coordinates shown are Missouri East Zone State Plane.
  - Vertical Datum is based on the National Geodetic Vertical Datum of 1929 (NGVD29).

Depths shown are below MINIMUM POOL  
Depths shown in red are 3' below MINIMUM POOL  
Depths shown in green are 12' below MINIMUM POOL  
Depths shown in blue are 14' below MINIMUM POOL

MIN POOL  
DEPTHS AND CONTOURS SHOWN ARE BASED ON DEPTH BELOW MINIMUM POOL

This deliverable complies with the Quality Control Plan developed by Prairie Engineers, P.C. and with the procedures and requirements outlined in USACE Engineering Manual ER 1110-1-12.

DIKE 295.0(R)

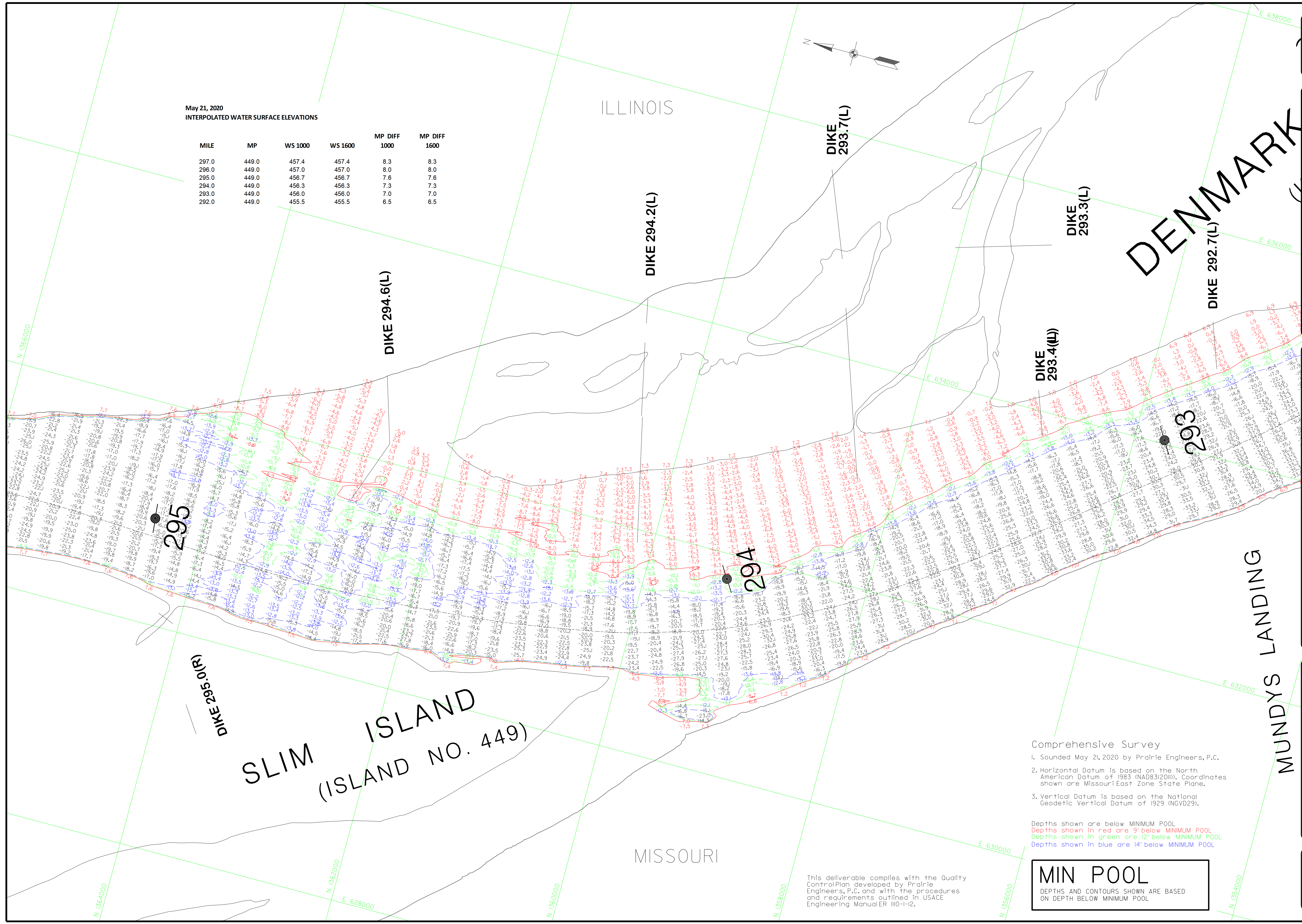
SL



US Army Corps of Engineers  
St. Louis District

May 21, 2020  
INTERPOLATED WATER SURFACE ELEVATIONS

MILE	MP	WS 1000	WS 1600	MP DIFF 1000	MP DIFF 1600
297.0	449.0	457.4	457.4	8.3	8.3
296.0	449.0	457.0	457.0	8.0	8.0
295.0	449.0	456.7	456.7	7.6	7.6
294.0	449.0	456.3	456.3	7.3	7.3
293.0	449.0	456.0	456.0	7.0	7.0
292.0	449.0	455.5	455.5	6.5	6.5



WATER SURFACE	GAGE RECORD		LOUISIANA
	L & D 22 (LOWER)	MUNDY	
ZERO N.G.V.D.	446.1	449.0	437.3
MILE	30.2	293.0	282.9
MIN POOL	449.1	448.0	448.8

SURVEY DATA		SUBMITTED	
Survey Date: May 21, 2020	Chief, Engr. Data Mgmt. Sect.	File: SH04_300.274.mxd	Plot Date: 7/31/2020
Drawn by: JLM	Reviewed by: JLM	Plot Scale: 1"=400'	

U.S. ARMY ENGINEER DIVISION  
CORPS OF ENGINEERS  
ST. LOUIS, MISSOURI

UPPER MISSISSIPPI RIVER BASIN  
MISSISSIPPI RIVER

240 METERS  
400  
800 FEET

COMPREHENSIVE SURVEY  
MILE: 300.0 - 195.0

PLATE NUMBER  
04

Comprehensive Survey

- Sounded May 21, 2020 by Prairie Engineers, P.C.
- Horizontal Datum is based on the North American Datum of 1983 (NAD83(2011)). Coordinates shown are Missouri East Zone State Plane.
- Vertical Datum is based on the National Geodetic Vertical Datum of 1929 (NGVD29).

Depths shown are below MINIMUM POOL  
Depths shown in red are 9' below MINIMUM POOL  
Depths shown in green are 12' below MINIMUM POOL  
Depths shown in blue are 14' below MINIMUM POOL

**MIN POOL**  
DEPTHS AND CONTOURS SHOWN ARE BASED ON DEPTH BELOW MINIMUM POOL

This deliverable complies with the Quality Control Plan developed by Prairie Engineers, P.C. and with the procedures and requirements outlined in USACE Engineering Manual ER 110-I-2.

# DRIFT ISLAND

May 20, 2020  
INTERPOLATED WATER SURFACE ELEVATIONS

MILE	MP	WS 09:00	WS 17:00	MP DIFF 09:00	MP DIFF 17:00
292.0	449.0	455.6	455.5	6.6	6.5
291.0	449.0	455.1	455.0	6.2	6.1
290.0	448.9	454.6	454.5	5.7	5.6
289.0	448.9	454.2	454.1	5.3	5.2
288.0	448.9	453.7	453.6	4.8	4.7
287.0	448.9	453.2	453.1	4.4	4.3
282.9	448.8	451.3	450.9	2.5	2.1

# DENMARK ISLAND

(ISLAND NO. 450)

# BLACKBIRD ISLAND

May 21, 2020  
INTERPOLATED WATER SURFACE ELEVATIONS

MILE	MP	WS 1000	WS 1600	MP DIFF 1000	MP DIFF 1600
297.0	449.0	457.4	457.4	8.3	8.3
296.0	449.0	457.0	457.0	8.0	8.0
295.0	449.0	456.7	456.7	7.6	7.6
294.0	449.0	456.3	456.3	7.3	7.3
293.0	449.0	456.0	456.0	7.0	7.0
292.0	449.0	455.5	455.5	6.5	6.5

This deliverable complies with the Quality Control Plan developed by Prairie Engineers, P.C. and with the procedures and requirements outlined in USACE Engineering Manual 110-I-12.

STATE	LOUISIANA
ZERO N.G.V.D.	437.3
MILE	293.0
MIN POOL	448.0
DATE	20 MAY 2020
PROJECT	456.0 (05/20)
SCALE	450.0 (07/20)

Survey Date: May 20, 2020
Submitted: May 21, 2020
Drawn by: JAW
Checked by: JAW
Reviewed by: Chief, Engr. Data Mgmt. Sect.
File: SH05_300_275.mxd
Plot Date: 7/31/2020
Plot Scale: 1"=400'

U.S. Army Engineer Division
Corps of Engineers
St. Louis, Missouri
Upper Mississippi River Basin
Mississippi River

U.S. Army Engineer Division
Corps of Engineers
St. Louis, Missouri
Upper Mississippi River Basin
Mississippi River

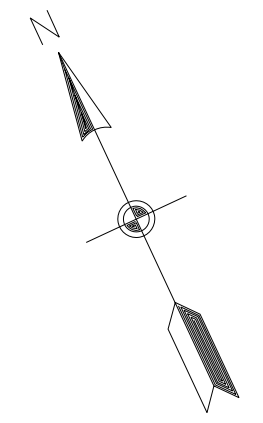
240 METERS
800 FEET
400 FEET
0
1" = 400'
COMPREHENSIVE SURVEY
MILE: 300.0 - 195.0

PLATE NUMBER
05

- Comprehensive Survey
- Sounded May 20 & 21, 2020 by Prairie Engineers, P.C.
  - Horizontal Datum is based on the North American Datum of 1983 (NAD83(2011)). Coordinates shown are Missouri East Zone State Plane.
  - Vertical Datum is based on the National Geodetic Vertical Datum of 1929 (NGVD29).

Depths are below MINIMUM POOL  
 Depths shown in red are 9' below MINIMUM POOL  
 Depths shown in green are 12' below MINIMUM POOL  
 Depths shown in blue are 14' below MINIMUM POOL

**MIN POOL**  
 DEPTHS AND CONTOURS SHOWN ARE BASED ON DEPTH BELOW MINIMUM POOL



May 20, 2020  
INTERPOLATED WATER SURFACE ELEVATIONS

MILE	MP	WS 09:00	WS 17:00	MP DIFF 09:00	MP DIFF 17:00
292.0	449.0	455.6	455.5	6.6	6.5
291.0	449.0	455.1	455.0	6.2	6.1
290.0	448.9	454.6	454.5	5.7	5.6
289.0	448.9	454.2	454.1	5.3	5.2
288.0	448.9	453.7	453.6	4.8	4.7
287.0	448.9	453.2	453.1	4.4	4.3
282.9	448.8	451.3	450.9	2.5	2.1

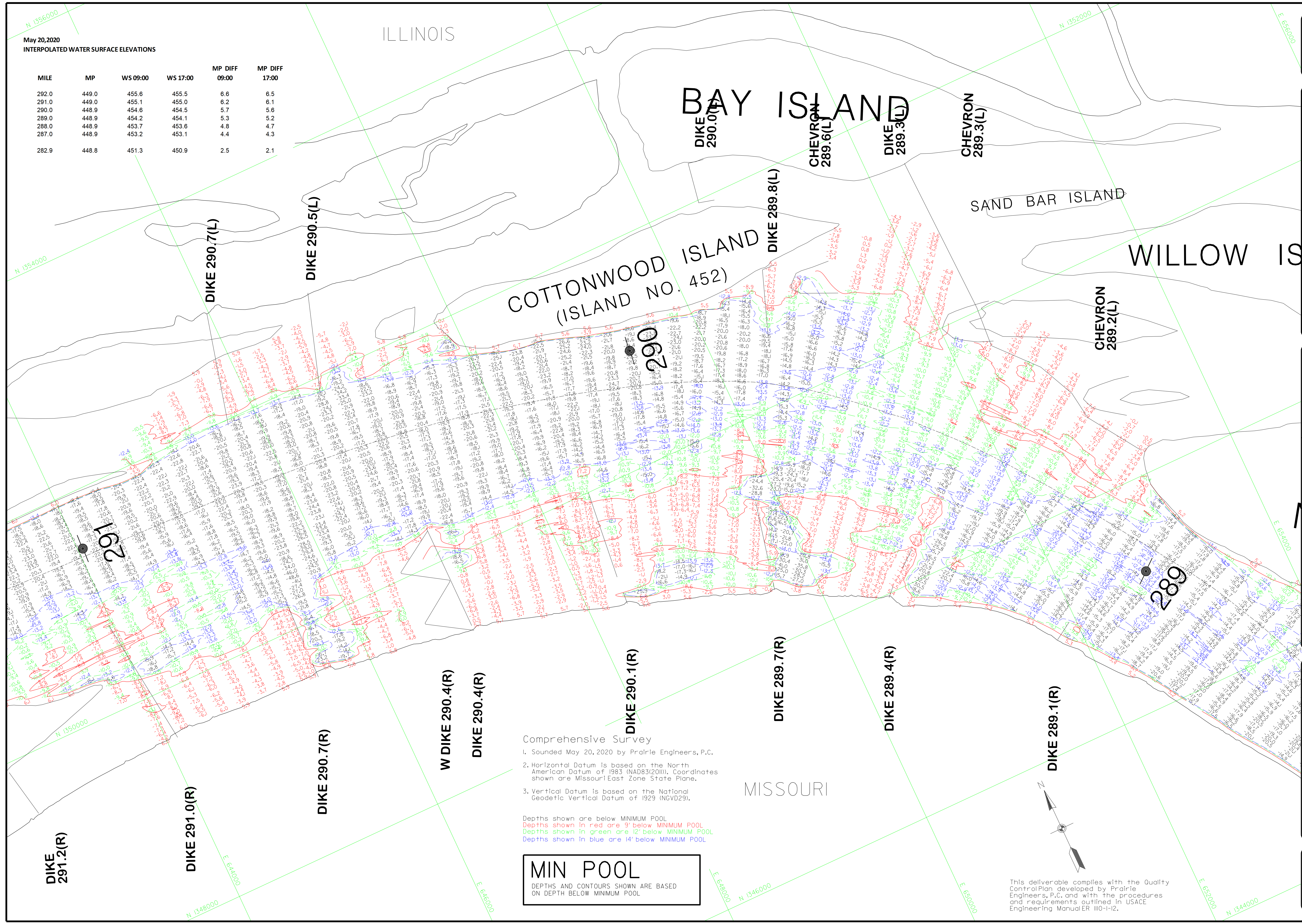
WATER SURFACE	LOUISIANA
441.9	437.3
293.0	282.9
449.0	448.8
456.0 (05/01)	451.3 (09/01)
456.0 (17/01)	450.9 (17/01)

DATE	BY	REVIEWED BY	APPROVED BY
20 MAY 2020	Chief, Engr. Data Mgmt. Sect.	Chief, Engr. Data Mgmt. Sect.	Chief, Engr. Data Mgmt. Sect.

U.S. ARMY ENGINEER DIVISION	MISSISSIPPI RIVER BASIN
CORPS OF ENGINEERS	MISSISSIPPI RIVER
ST. LOUIS, MISSOURI	

COMPREHENSIVE SURVEY
MILE: 300.0 - 195.0

PLATE NUMBER
06

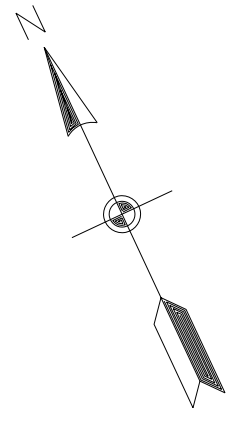
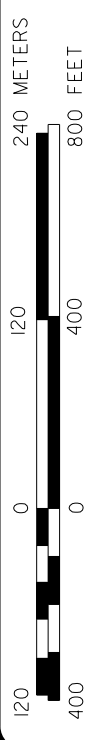


Comprehensive Survey  
 1. Sounded May 20, 2020 by Prairie Engineers, P.C.  
 2. Horizontal Datum is based on the North American Datum of 1983 (NAD83(2011)). Coordinates shown are Missouri East Zone State Plane.  
 3. Vertical Datum is based on the National Geodetic Vertical Datum of 1929 (NGVD29).

Depths shown are below MINIMUM POOL  
 Depths shown in red are 9' below MINIMUM POOL  
 Depths shown in green are 12' below MINIMUM POOL  
 Depths shown in blue are 14' below MINIMUM POOL

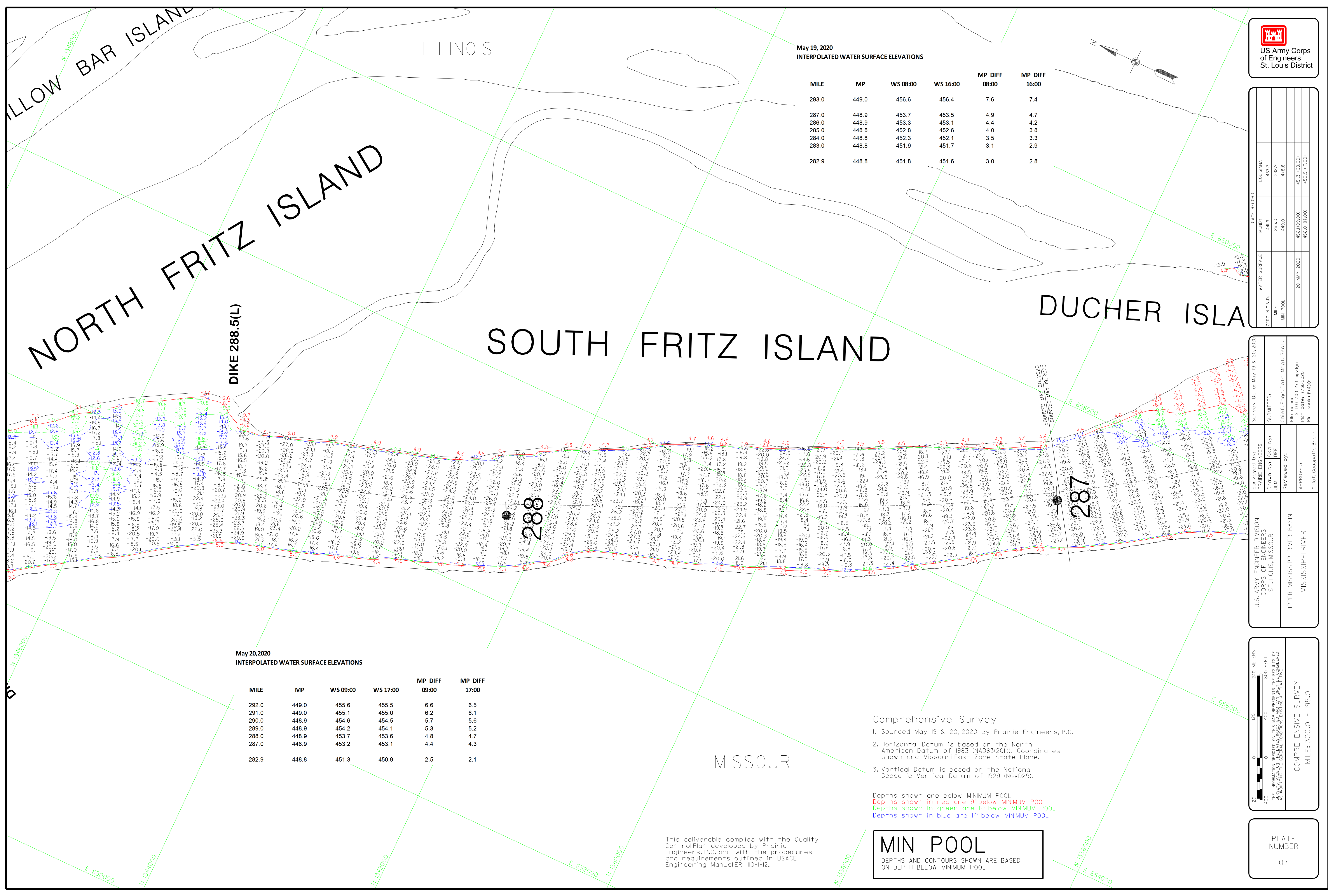
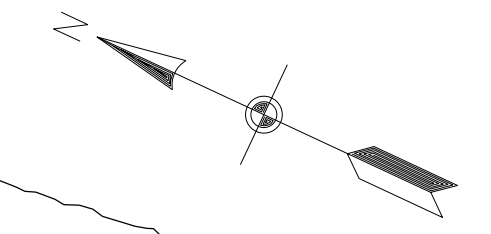
**MIN POOL**  
 DEPTHS AND CONTOURS SHOWN ARE BASED ON DEPTH BELOW MINIMUM POOL

This deliverable complies with the Quality Control Plan developed by Prairie Engineers, P.C. and with the procedures and requirements outlined in USACE Engineering Manual ERII-1-12.



May 19, 2020  
INTERPOLATED WATER SURFACE ELEVATIONS

MILE	MP	WS 08:00	WS 16:00	MP DIFF 08:00	MP DIFF 16:00
293.0	449.0	456.6	456.4	7.6	7.4
287.0	448.9	453.7	453.5	4.9	4.7
286.0	448.9	453.3	453.1	4.4	4.2
285.0	448.8	452.8	452.6	4.0	3.8
284.0	448.8	452.3	452.1	3.5	3.3
283.0	448.8	451.9	451.7	3.1	2.9
282.9	448.8	451.8	451.6	3.0	2.8



May 20, 2020  
INTERPOLATED WATER SURFACE ELEVATIONS

MILE	MP	WS 09:00	WS 17:00	MP DIFF 09:00	MP DIFF 17:00
292.0	449.0	455.6	455.5	6.6	6.5
291.0	449.0	455.1	455.0	6.2	6.1
290.0	448.9	454.6	454.5	5.7	5.6
289.0	448.9	454.2	454.1	5.3	5.2
288.0	448.9	453.7	453.6	4.8	4.7
287.0	448.9	453.2	453.1	4.4	4.3
282.9	448.8	451.3	450.9	2.5	2.1

- Comprehensive Survey
- Sounded May 19 & 20, 2020 by Prairie Engineers, P.C.
  - Horizontal Datum is based on the North American Datum of 1983 (NAD83(2011)). Coordinates shown are Missouri East Zone State Plane.
  - Vertical Datum is based on the National Geodetic Vertical Datum of 1929 (NGVD29).

Depths shown are below MINIMUM POOL  
Depths shown in red are 9' below MINIMUM POOL  
Depths shown in green are 12' below MINIMUM POOL  
Depths shown in blue are 14' below MINIMUM POOL

**MIN POOL**  
DEPTHS AND CONTOURS SHOWN ARE BASED ON DEPTH BELOW MINIMUM POOL

This deliverable complies with the Quality Control Plan developed by Prairie Engineers, P.C. and with the procedures and requirements outlined in USACE Engineering Manual ER 110-I-12.

WATER SURFACE	MIN FLOOD	MP DIFF 08:00	MP DIFF 16:00
449.0	448.0	7.6	7.4
293.0	448.0	4.9	4.7
449.0	448.0	4.4	4.2
448.0	448.0	4.0	3.8
448.0	448.0	3.5	3.3
448.0	448.0	3.1	2.9
448.0	448.0	3.0	2.8

DATE	BY	REVIEWED BY	APPROVED BY
20 MAY 2020	Chief, Engr. Data Mgmt. Sect.		
20 MAY 2020	Chief, Geospatial Branch		

U.S. ARMY ENGINEER DIVISION  
CORPS OF ENGINEERS  
ST. LOUIS, MISSOURI  
UPPER MISSISSIPPI RIVER BASIN  
MISSISSIPPI RIVER

COMPREHENSIVE SURVEY  
MILE: 300.0 - 195.0

PLATE NUMBER  
07

May 19, 2020  
INTERPOLATED WATER SURFACE ELEVATIONS

MILE	MP	WS 08:00	WS 16:00	MP DIFF 08:00	MP DIFF 16:00
293.0	449.0	456.6	456.4	7.6	7.4
287.0	448.9	453.7	453.5	4.9	4.7
286.0	448.8	452.8	452.6	4.0	3.8
284.0	448.8	452.3	452.1	3.5	3.3
283.0	448.8	451.9	451.7	3.1	2.9
282.9	448.8	451.8	451.6	3.0	2.8

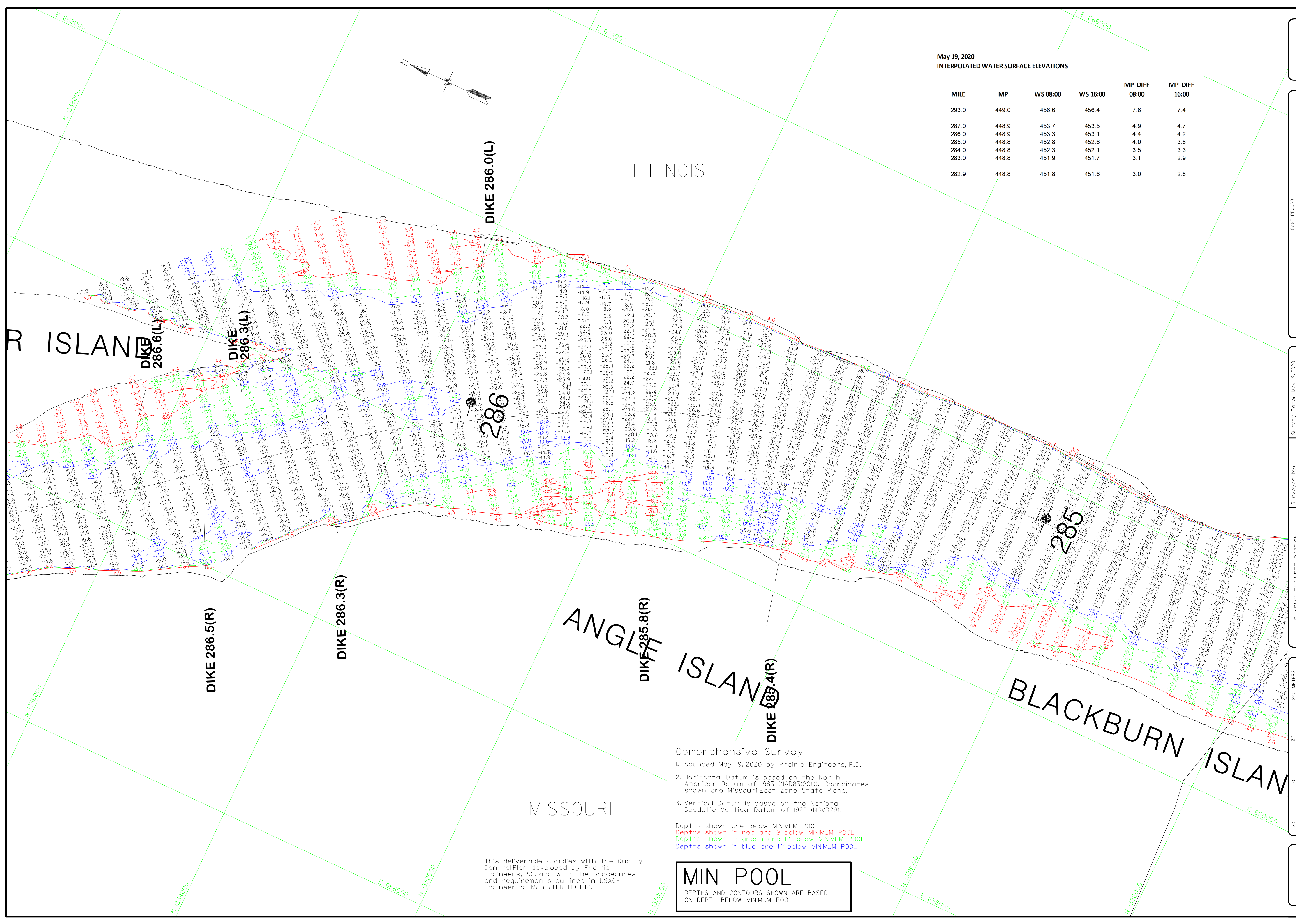
CAGE RECORD	LOUISIANA
MUNDY	437.3
ZERO N.G.V.D.	293.0
MIN FOOI	448.0
DATE	451.8 (08/20)
SCALE	451.6 (06/20)

DATE	BY
SURVEYED BY	PRairie ENGINEERS
DRAWN BY	J.M.H.
REVIEWED BY	Chief, Engr. Data Mgmt. Sect.
APPROVED	Chief, Geospatial Branch

PROJECT	LOCATION
UPPER MISSISSIPPI RIVER BASIN	MISSISSIPPI RIVER

SCALE	UNIT
300.0	FEET
91.4	METERS

PLATE NUMBER  
08



**MIN POOL**  
DEPTH AND CONTOURS SHOWN ARE BASED ON DEPTH BELOW MINIMUM POOL

This deliverable complies with the Quality Control Plan developed by Prairie Engineers, P.C. and with the procedures and requirements outlined in USACE Engineering Manual ER 110-1-2.

- Comprehensive Survey
- Sounded May 19, 2020 by Prairie Engineers, P.C.
  - Horizontal Datum is based on the North American Datum of 1983 (NAD83(2011)), Coordinates shown are Missouri East Zone State Plane.
  - Vertical Datum is based on the National Geodetic Vertical Datum of 1929 (NGVD29).

Depths shown are below MINIMUM POOL  
 Depths shown in red are 3' below MINIMUM POOL  
 Depths shown in green are 12' below MINIMUM POOL  
 Depths shown in blue are 14' below MINIMUM POOL



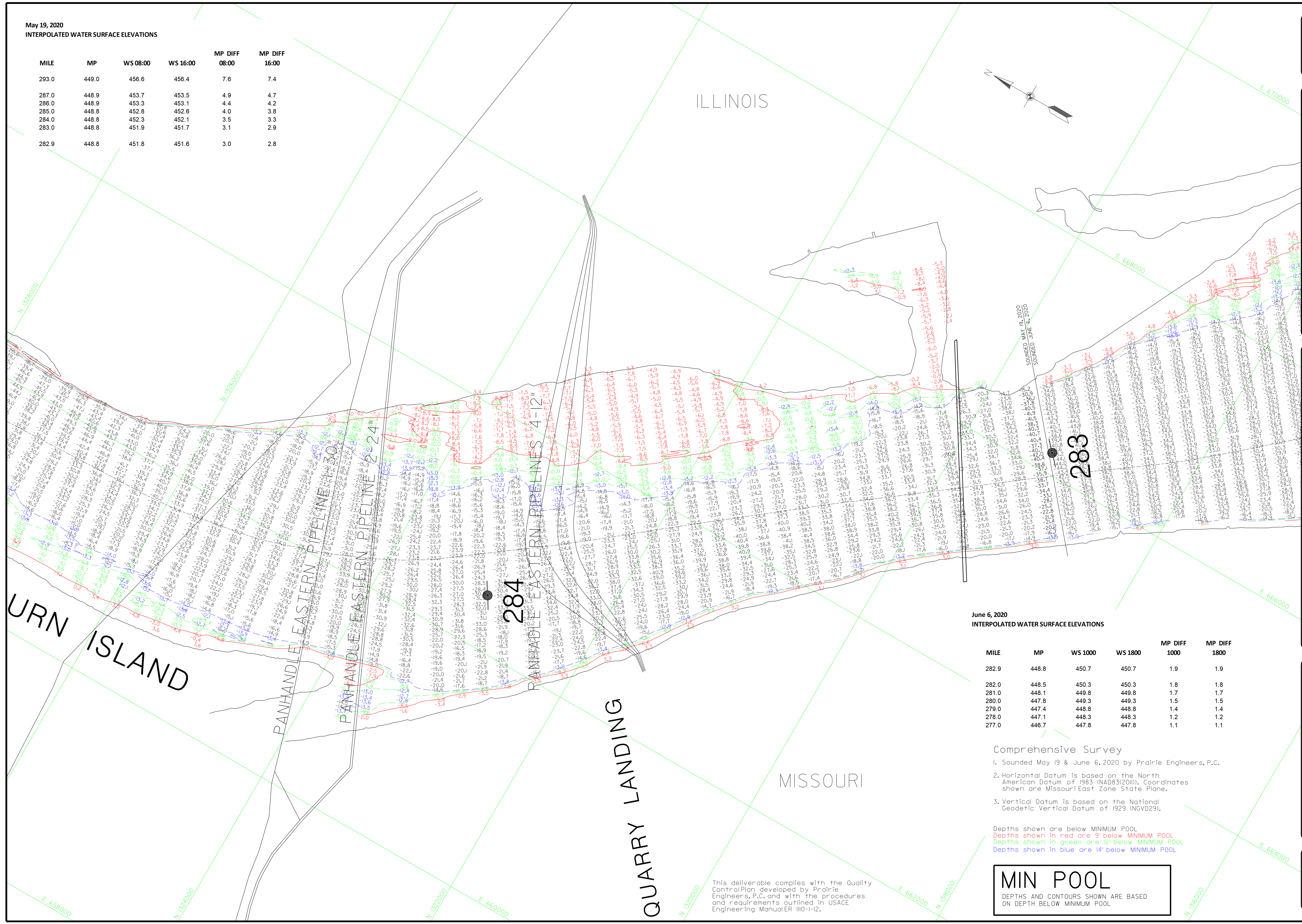
May 19, 2020  
INTERPOLATED WATER SURFACE ELEVATIONS

MILE	MP	WS 08:00	WS 16:00	MP DIFF 08:00	MP DIFF 16:00
293.0	449.0	456.6	456.4	7.6	7.4
287.0	448.9	453.7	453.5	4.9	4.7
286.0	448.9	453.3	453.1	4.4	4.2
285.0	448.8	452.8	452.6	4.0	3.8
284.0	448.8	452.3	452.1	3.5	3.3
283.0	448.8	451.9	451.7	3.1	2.9
282.9	448.8	451.8	451.6	3.0	2.8



CAGE RECORD	LOUISIANA
MUNDY	437.3
WATER SURFACE	293.0
ZERO N.G.V.D.	449.0
MILE	448.8
MN POOL	451.8
19 MAY 2020	451.8 (08:00)
	451.6 (16:00)

U.S. ARMY ENGINEER DIVISION	ST. LOUIS, MISSOURI
UPPER MISSISSIPPI RIVER BASIN <td>MISSISSIPPI RIVER </td>	MISSISSIPPI RIVER
Survey Date: May 19, 2020	Submitted: June 6, 2020
Drawn by: J.S.M.	Checked by: Chief, Engr. Data Mgmt. Sect.
Reviewed by:	File: S:\1905\1905_275.mxd
APPROVED:	Plot Date: 7/31/2020
	Plot Scale: 1"=400'



June 6, 2020  
INTERPOLATED WATER SURFACE ELEVATIONS

MILE	MP	WS 1000	WS 1800	MP DIFF 1000	MP DIFF 1800
282.9	448.8	450.7	450.7	1.9	1.9
282.0	448.5	450.3	450.3	1.8	1.8
281.0	448.1	449.8	449.8	1.7	1.7
280.0	447.8	449.3	449.3	1.5	1.5
279.0	447.4	448.8	448.8	1.4	1.4
278.0	447.1	448.3	448.3	1.2	1.2
277.0	446.7	447.8	447.8	1.1	1.1

- Comprehensive Survey
- Sounded May 19 & June 6, 2020 by Prairie Engineers, P.C.
  - Horizontal Datum is based on the North American Datum of 1983 (NAD83(2011)). Coordinates shown are Missouri East Zone State Plane.
  - Vertical Datum is based on the National Geodetic Vertical Datum of 1929 (NGVD29).

Depths shown are below MINIMUM POOL  
 Depths shown in red are 9' below MINIMUM POOL  
 Depths shown in green are 12' below MINIMUM POOL  
 Depths shown in blue are 14' below MINIMUM POOL

**MIN POOL**  
 DEPTHS AND CONTOURS SHOWN ARE BASED ON DEPTH BELOW MINIMUM POOL

This deliverable complies with the Quality Control Plan developed by Prairie Engineers, P.C. and with the procedures and requirements outlined in USACE Engineering Manual 110-1-12.

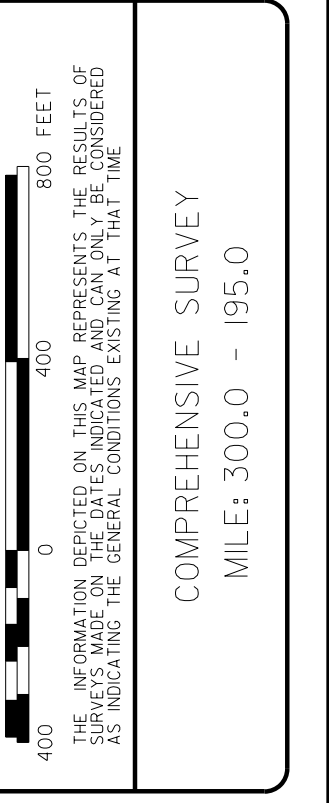
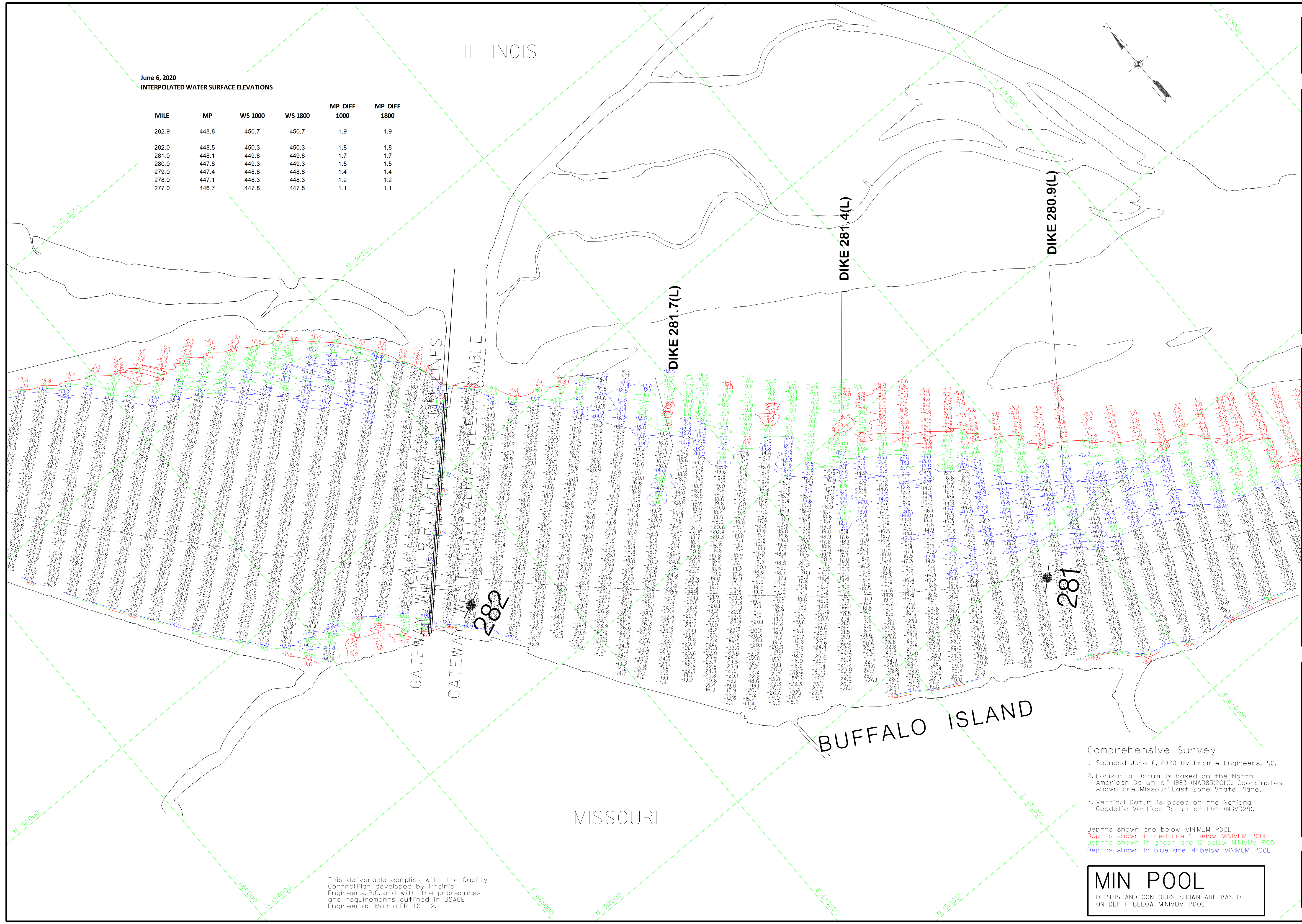


PLATE NUMBER  
09

June 6, 2020  
INTERPOLATED WATER SURFACE ELEVATIONS

MILE	MP	WS 1000	WS 1800	MP DIFF 1000	MP DIFF 1800
282.9	448.8	450.7	450.7	1.9	1.9
282.0	448.5	450.3	450.3	1.8	1.8
281.0	448.1	449.8	449.8	1.7	1.7
280.0	447.8	449.3	449.3	1.5	1.5
279.0	447.4	448.8	448.8	1.4	1.4
278.0	447.1	448.3	448.3	1.2	1.2
277.0	446.7	447.8	447.8	1.1	1.1



GAGE RECORD		LOUISIANA		L. & D. 24 (UPPER)	
WATER SURFACE	437.3	4218			
ZERO NGVD	282.9	2715			
MILE	448.8	445.5			
MIN POOL		445.1 (10/20)			
		450.7 (10/20)			
		450.7 (10/20)			
		446.1 (10/20)			

Survey Date: June 6, 2020	Submitted: [Signature]	Chief, Engr. Data Mgmt. Sect.
Drawn by: [Signature]	Reviewed by: [Signature]	APPROVED: [Signature]
File: SH0300_213.mxd	Plot Date: 7/31/2020	Plot Scale: 1"=400'

U.S. ARMY ENGINEER DIVISION  
CORPS OF ENGINEERS  
ST. LOUIS, MISSOURI

UPPER MISSISSIPPI RIVER BASIN  
MISSISSIPPI RIVER

240 METERS  
800 FEET

0 400 800

THE INFORMATION DEPICTED ON THIS MAP REPRESENTS THE RESULTS OF A SURVEY CONDUCTED BY THE U.S. ARMY CORPS OF ENGINEERS AS INDICATED BY THE GENERAL CONDITIONS EXISTING AT THE TIME OF THE SURVEY.

COMPREHENSIVE SURVEY  
MILE: 300.0 - 195.0

- Comprehensive Survey
- Sounded June 6, 2020 by Prairie Engineers, P.C.
  - Horizontal Datum is based on the North American Datum of 1983 (NAD83(2011)). Coordinates shown are Missouri East Zone State Plane.
  - Vertical Datum is based on the National Geodetic Vertical Datum of 1929 (NGVD29).

Depths shown are below MINIMUM POOL  
Depths shown in red are 9' below MINIMUM POOL  
Depths shown in green are 12' below MINIMUM POOL  
Depths shown in blue are 14' below MINIMUM POOL

**MIN POOL**  
DEPTHS AND CONTOURS SHOWN ARE BASED ON DEPTH BELOW MINIMUM POOL

PLATE NUMBER  
10

This deliverable complies with the Quality Control Plan developed by Prairie Engineers, P.C. and with the procedures and requirements outlined in USACE Engineering Manual ER 1110-1-12.

ILLINOIS

MISSOURI

GATEWAY WEST RAIL AERIAL CABLE  
GATEWAY WEST RAIL AERIAL CABLE

BUFFALO ISLAND

DIKE 281.7(L)

DIKE 281.4(L)

DIKE 280.9(L)

282

281

WATER SURFACE	LOUISIANA	L&O 24 (U)
437.3	4218	
282.9	2715	
448.8	4455	
450.7 (1860)	4451 (1860)	
450.7 (1860)	4451 (1860)	

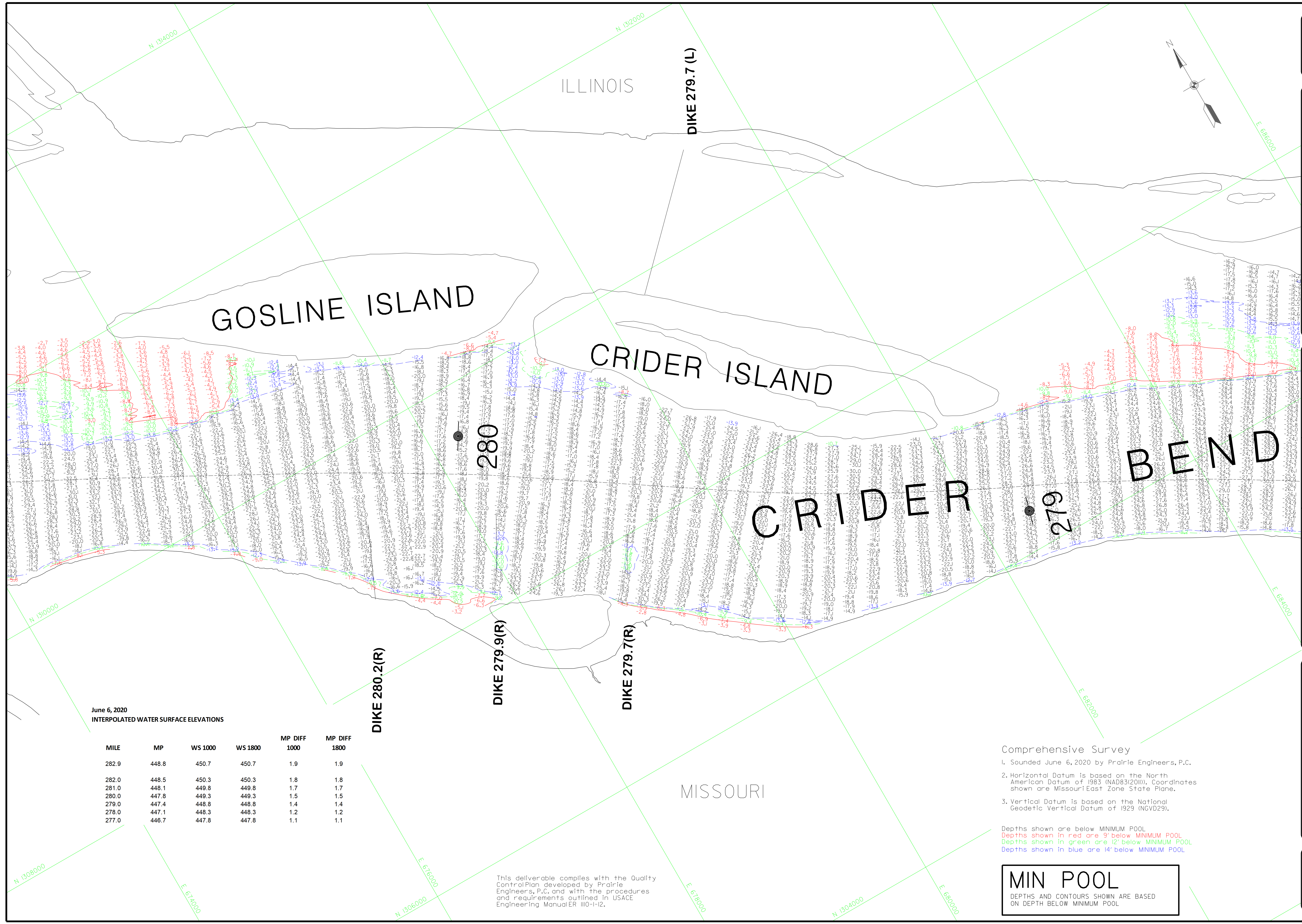
DATE	BY	REVISION
6 JUN 2020	Chief, Engr. Data Mgmt. Sect.	1
6 JUN 2020	Chief, Engr. Data Mgmt. Sect.	2

U.S. ARMY ENGINEER DIVISION  
CORPS OF ENGINEERS  
ST. LOUIS, MISSOURI

UPPER MISSISSIPPI RIVER BASIN  
MISSISSIPPI RIVER

COMPREHENSIVE SURVEY  
MILE: 300.0 - 195.0

PLATE NUMBER  
II



June 6, 2020  
INTERPOLATED WATER SURFACE ELEVATIONS

MILE	MP	WS 1000	WS 1800	MP DIFF 1000	MP DIFF 1800
282.9	448.8	450.7	450.7	1.9	1.9
282.0	448.5	450.3	450.3	1.8	1.8
281.0	448.1	449.8	449.8	1.7	1.7
280.0	447.8	449.3	449.3	1.5	1.5
279.0	447.4	448.8	448.8	1.4	1.4
278.0	447.1	448.3	448.3	1.2	1.2
277.0	446.7	447.8	447.8	1.1	1.1

- Comprehensive Survey
- Sounded June 6, 2020 by Prairie Engineers, P.C.
  - Horizontal Datum is based on the North American Datum of 1983 (NAD83(2011)). Coordinates shown are Missouri East Zone State Plane.
  - Vertical Datum is based on the National Geodetic Vertical Datum of 1929 (NGVD29).

Depths shown are below MINIMUM POOL  
Depths shown in red are 9' below MINIMUM POOL  
Depths shown in green are 12' below MINIMUM POOL  
Depths shown in blue are 14' below MINIMUM POOL

**MIN POOL**  
DEPTHS AND CONTOURS SHOWN ARE BASED ON DEPTH BELOW MINIMUM POOL

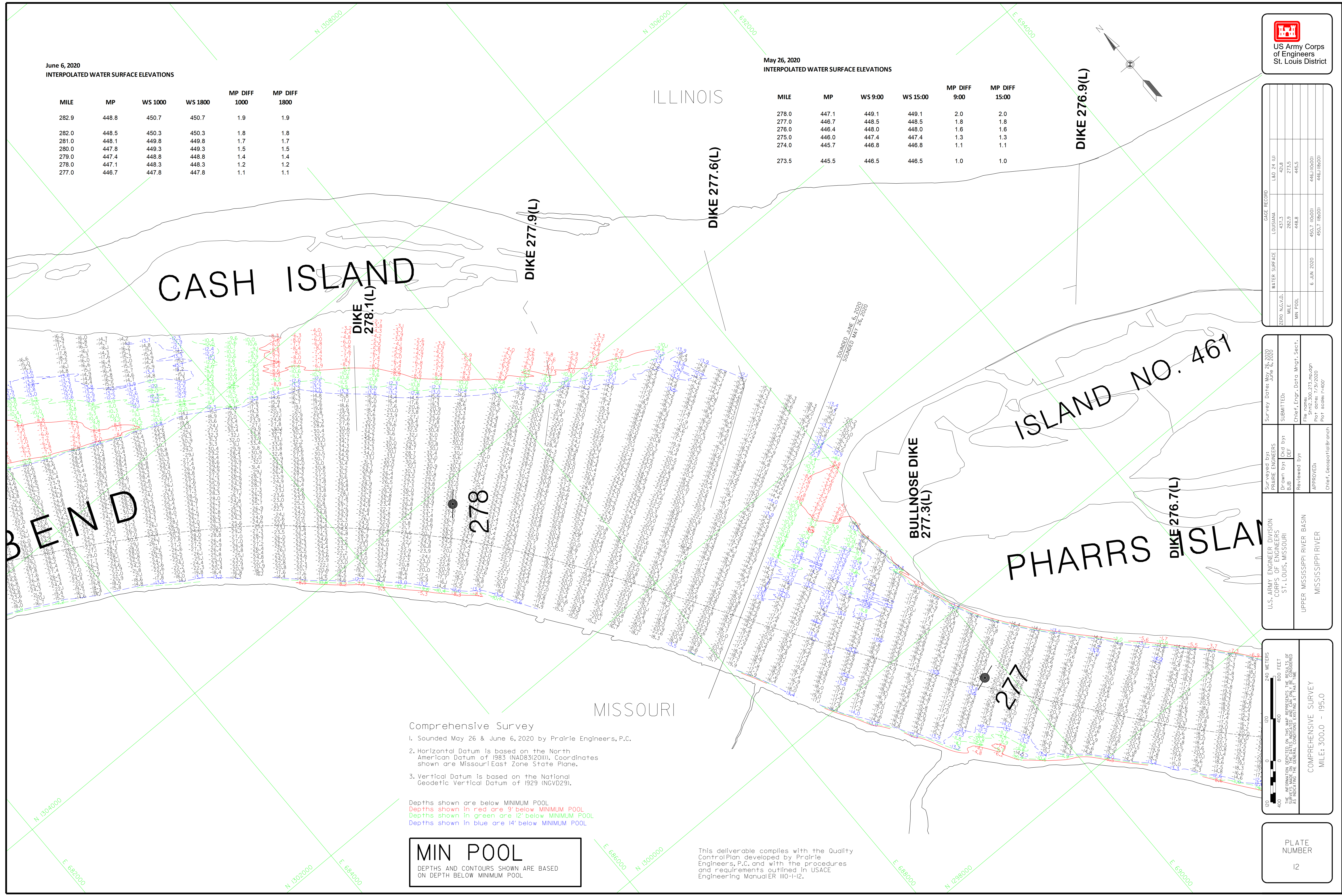
This deliverable complies with the Quality Control Plan developed by Prairie Engineers, P.C. and with the procedures and requirements outlined in USACE Engineering Manual ER 1110-112.

June 6, 2020  
INTERPOLATED WATER SURFACE ELEVATIONS

MILE	MP	WS 1000	WS 1800	MP DIFF 1000	MP DIFF 1800
282.9	448.8	450.7	450.7	1.9	1.9
282.0	448.5	450.3	450.3	1.8	1.8
281.0	448.1	449.8	449.8	1.7	1.7
280.0	447.8	449.3	449.3	1.5	1.5
279.0	447.4	448.8	448.8	1.4	1.4
278.0	447.1	448.3	448.3	1.2	1.2
277.0	446.7	447.8	447.8	1.1	1.1

May 26, 2020  
INTERPOLATED WATER SURFACE ELEVATIONS

MILE	MP	WS 9:00	WS 15:00	MP DIFF 9:00	MP DIFF 15:00
278.0	447.1	449.1	449.1	2.0	2.0
277.0	446.7	448.5	448.5	1.8	1.8
276.0	446.4	448.0	448.0	1.6	1.6
275.0	446.0	447.4	447.4	1.3	1.3
274.0	445.7	446.8	446.8	1.1	1.1
273.5	445.5	446.5	446.5	1.0	1.0



GAGE RECORD	
LOUISIANA	L&D 24 (U)
WATER SURFACE	437.3
ZERO NGVD	282.9
MILE	448.8
MIN POOL	450.7 (10/00)
	450.7 (16/00)

Survey Dates: May 26, 2020  
June 6, 2020  
SUBMITTED:  
Chief, Engr. Data Mgmt. Sect.  
File: SHP\_300\_273.mxd  
Plot Date: 7/31/2020  
Plot Scale: 1"=400'

U.S. ARMY ENGINEER DIVISION  
CORPS OF ENGINEERS  
ST. LOUIS, MISSOURI  
UPPER MISSISSIPPI RIVER BASIN  
MISSISSIPPI RIVER

U.S. ARMY ENGINEER DIVISION  
CORPS OF ENGINEERS  
ST. LOUIS, MISSOURI  
UPPER MISSISSIPPI RIVER BASIN  
MISSISSIPPI RIVER

COMPREHENSIVE SURVEY  
MILE: 300.0 - 195.0

PLATE NUMBER  
12

- Comprehensive Survey
- Sounded May 26 & June 6, 2020 by Prairie Engineers, P.C.
  - Horizontal Datum is based on the North American Datum of 1983 (NAD83(2011)). Coordinates shown are Missouri East Zone State Plane.
  - Vertical Datum is based on the National Geodetic Vertical Datum of 1929 (NGVD29).

Depths shown are below MINIMUM POOL  
Depths shown in red are 9' below MINIMUM POOL  
Depths shown in green are 12' below MINIMUM POOL  
Depths shown in blue are 14' below MINIMUM POOL

**MIN POOL**  
DEPTHS AND CONTOURS SHOWN ARE BASED ON DEPTH BELOW MINIMUM POOL

This deliverable complies with the Quality Control Plan developed by Prairie Engineers, P.C. and with the procedures and requirements outlined in USACE Engineering Manual ER 110-I-2.

GAGE RECORD	
LOUISIANA	L&D 24 (U)
437.3	421.8
282.9	273.5
448.8	445.5
451.9 (09/00)	446.5 (09/00)
451.9 (05/00)	446.5 (05/00)

Survey Date: May 26, 2020	Submitted:
Drawn by: PCE by:	Chief, Engr. Data Mgt. Sect.
Reviewed by:	File: SHL_300_273.mxd
APPROVED:	Plot Date: 7/31/2020
Chief, Geospatial Branch	Plot Scale: 1"=400'

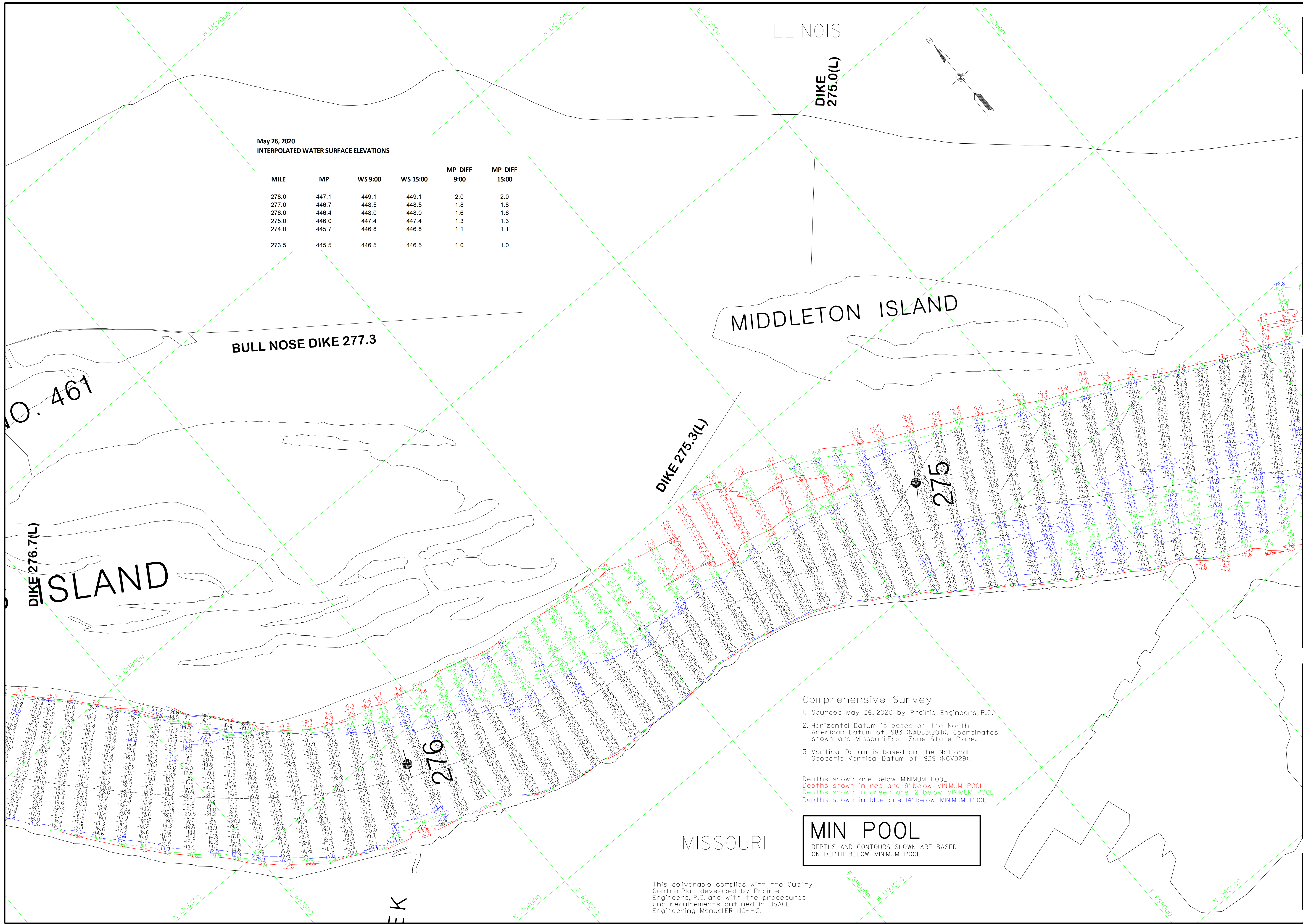
U.S. ARMY ENGINEER DIVISION  
CORPS OF ENGINEERS  
ST. LOUIS, MISSOURI

UPPER MISSISSIPPI RIVER BASIN  
MISSISSIPPI RIVER

240 METERS  
0 400 800 FEET

COMPREHENSIVE SURVEY  
MILE: 300.0 - 195.0

PLATE NUMBER  
13



May 26, 2020  
INTERPOLATED WATER SURFACE ELEVATIONS

MILE	MP	WS 9:00	WS 15:00	MP DIFF 9:00	MP DIFF 15:00
278.0	447.1	449.1	449.1	2.0	2.0
277.0	446.7	448.5	448.5	1.8	1.8
276.0	446.4	448.0	448.0	1.6	1.6
275.0	446.0	447.4	447.4	1.3	1.3
274.0	445.7	446.8	446.8	1.1	1.1
273.5	445.5	446.5	446.5	1.0	1.0

Comprehensive Survey

- Sounded May 26, 2020 by Prairie Engineers, P.C.
- Horizontal Datum is based on the North American Datum of 1983 (NAD83(2011)). Coordinates shown are Missouri East Zone State Plane.
- Vertical Datum is based on the National Geodetic Vertical Datum of 1929 (NGVD29).

Depths shown are below MINIMUM POOL  
Depths shown in red are 9' below MINIMUM POOL  
Depths shown in green are 12' below MINIMUM POOL  
Depths shown in blue are 14' below MINIMUM POOL

**MIN POOL**  
DEPTHS AND CONTOURS SHOWN ARE BASED ON DEPTH BELOW MINIMUM POOL

This deliverable complies with the Quality Control Plan developed by Prairie Engineers, P.C. and with the procedures and requirements outlined in USACE Engineering Manual ER 1110-1-12.

Comprehensive Survey  
 1. Sounded May 23 & 26, 2020 by Prairie Engineers, P.C.  
 2. Horizontal Datum is based on the North American Datum of 1983 (NAD83(2011)). Coordinates shown are Missouri East Zone State Plane.  
 3. Vertical Datum is based on the National Geodetic Vertical Datum of 1929 (NGVD29).

May 23, 2020  
 INTERPOLATED WATER SURFACE ELEVATIONS

MILE	MP	WS10:00	WS 17:00	MP DIFF 10:00	MP DIFF 17:00
273.5	434.1	445.8	445.7	11.7	11.6
273.0	434.1	445.6	445.5	11.5	11.4
272.0	434.1	445.2	445.1	11.1	11.0
271.0	434.1	444.7	444.6	10.7	10.6
270.0	434.1	444.3	444.2	10.2	10.1
269.0	434.1	443.9	443.8	9.8	9.7

May 26, 2020  
 INTERPOLATED WATER SURFACE ELEVATIONS

MILE	MP	WS 9:00	WS 15:00	MP DIFF 9:00	MP DIFF 15:00
278.0	447.1	449.1	449.1	2.0	2.0
277.0	446.7	448.5	448.5	1.8	1.8
276.0	446.4	448.0	448.0	1.6	1.6
275.0	446.0	447.4	447.4	1.3	1.3
274.0	445.7	446.8	446.8	1.1	1.1
273.5	445.5	446.5	446.5	1.0	1.0

**MIN POOL**  
 DEPTHS AND CONTOURS SHOWN ARE BASED ON DEPTH BELOW MINIMUM POOL

ILLINOIS

DIKE 273.5(L)

DIKE 273.8(L)

SOUNDED MAY 26, 2020

SOUNDED MAY 23, 2020

LOCK & DAM 24

CLARKS

DIKE 273.2(L)

DIKE 272.9(L)

DIKE 272.7(L)

274

273

MISSOURI

This deliverable complies with the Quality Control Plan developed by Prairie Engineers, P.C. and with the procedures and requirements outlined in USACE Engineering Manual ER 1110-1-2.

WATER SURFACE	LOUISIANA	L&D 24 (U)
437.3	4218	
282.9	2715	
448.8	4455	
451.9 (05/20)	4465 (05/20)	
451.9 (05/20)	4465 (05/20)	

Survey Date: May 23, 2020	Submitted: Chief, Engr. Data Mgmt. Sect.
Survey Date: May 26, 2020	Plot Date: 7/31/2020
Drawn by: BCB	File: SHL300_273.mxd
Reviewed by: JEL	Plot Scale: 1"=400'
Approved: Chief, Geospatial Branch	

U.S. ARMY ENGINEER DIVISION CORPS OF ENGINEERS ST. LOUIS, MISSOURI	UPPER MISSISSIPPI RIVER BASIN MISSISSIPPI RIVER
--	--

0 400 800 METERS	0 400 800 FEET
THE INFORMATION DEPICTED ON THIS MAP REPRESENTS THE RESULTS OF A SURVEY CONDUCTED UNDER THE GENERAL CONDITIONS LISTED AT THE END OF THIS DRAWING.	
COMPREHENSIVE SURVEY MILE: 300.0 - 195.0	