

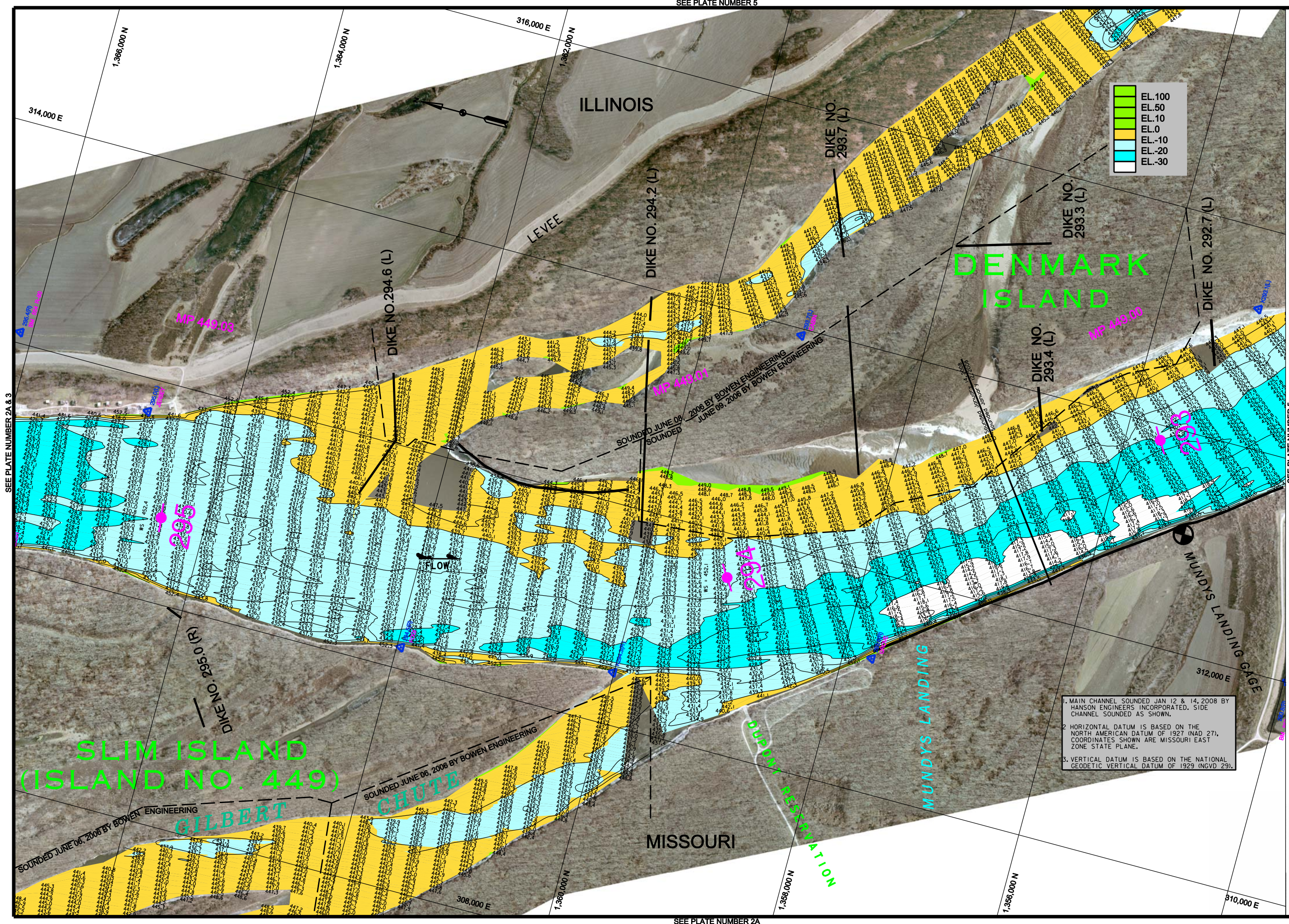


CASE RECORD		ST. LOUIS	
LOUISIANA NO.	L & D 22 (LOWER)	MUNDY'S LANDING	441.9
ZERO NGVD	437.3	441.9	379.94
MILE	282.8	30.1	293.0
L.W.R.P.	448.8	448.0	376.4
JUNE 8, 06	453.0	453.0	453.0
JUNE 3, 06	453.0	453.0	453.0
JAN 12/14, 08	453.0	453.0	453.0

U.S. ARMY ENGINEER DIVISION		ST. LOUIS	
CORPS OF ENGINEERS	ST. LOUIS, MISSOURI	DATE	AS SHOWN
UPPER MISSISSIPPI RIVER BASIN	HYDROGRAPHIC SURVEY	DATE	AS SHOWN
MILE: 292.8 - 295.0		DATE	AS SHOWN

DATE OF PHOTO MOSAIC: 22-24 FEB 2006	ST. LOUIS GAGE: -1.01	CAIRO GAGE: 31.30
--------------------------------------	-----------------------	-------------------

PLATE NUMBER	4
--------------	---



EL.100
EL.50
EL.10
EL.0
EL.-10
EL.-20
EL.-30

1. MAIN CHANNEL SOUNDED JAN 12 & 14, 2008 BY HANSON ENGINEERS INCORPORATED. SIDE CHANNEL SOUNDED AS SHOWN.
2. HORIZONTAL DATUM IS BASED ON THE NORTH AMERICAN DATUM OF 1927 (NAD 27). COORDINATES SHOWN ARE MISSOURI EAST ZONE STATE PLANE.
3. VERTICAL DATUM IS BASED ON THE NATIONAL GEODETIC VERTICAL DATUM OF 1929 (NGVD 29).

SEE PLATE NUMBER 2A & 3