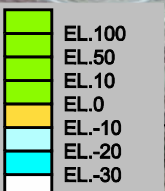


ILLINOIS

LEVEE

HANGING DOG ISLAND



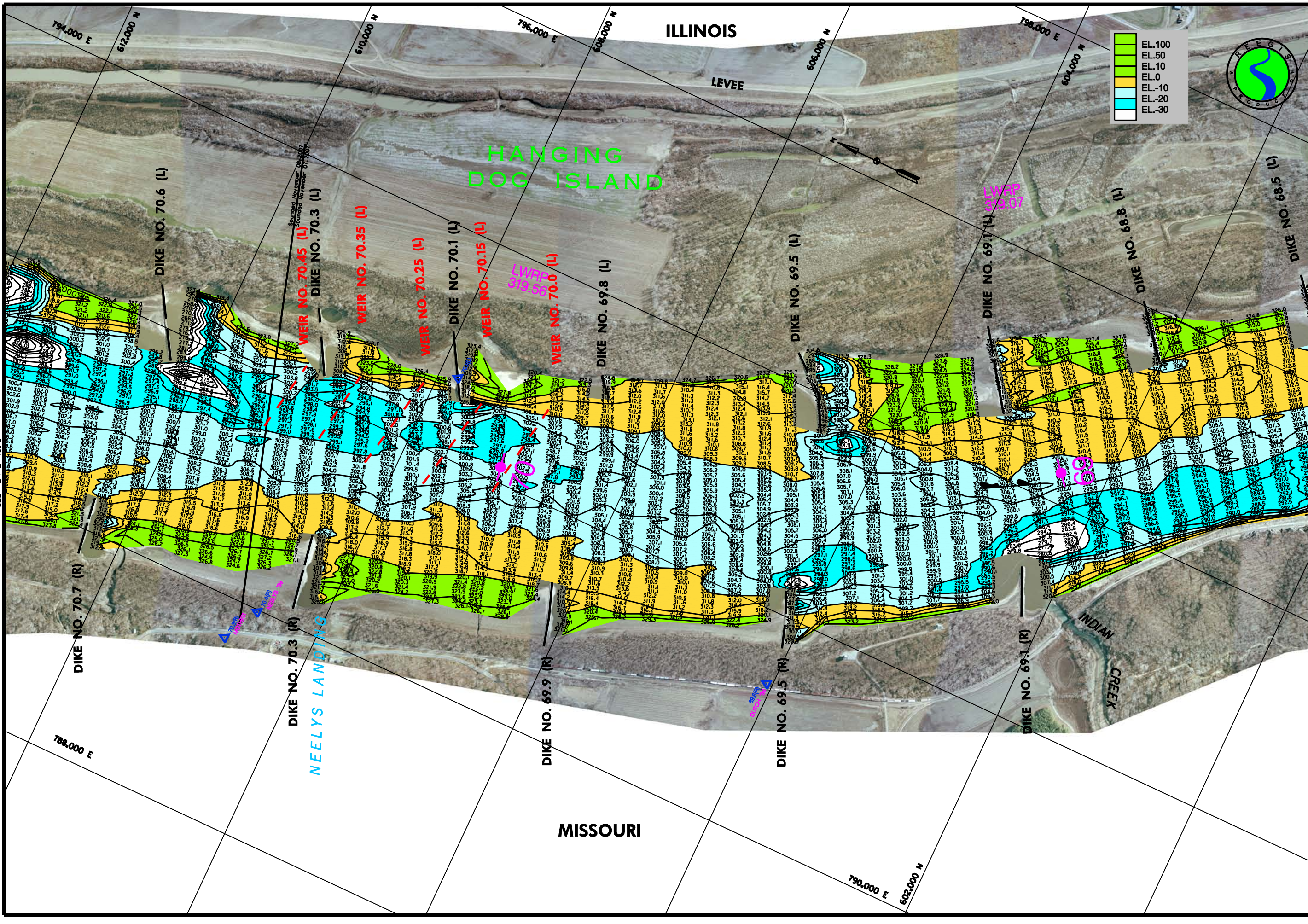
GAGE RECORD	
ST. LOUIS	GRAND TOWER, ILL.
ZERO MAG.D.	318.89
WATER SURFACE	MOCKASH SPRINGS
WILE	66.3
L. W. R. P.	317.8
T. NOV 2007	332.6
B. NOV 2007	332.8

Surveyed by	Survey Dates
HANSON ENGINEERING	November 7-8, 2007
DR. WEN	CRK BY
VICTOR BERHMAN	DAWN LAMM
SURMI TEON	APPROVED BY
JAMES L. REIM	KEITH L. SHORT
Chief, Engr. Data Mngt. Sect.	Chief, Geospatial Branch

U.S. ARMY ENGINEER DIVISION	
ST. LOUIS DISTRICT	
ST. LOUIS, MISSOURI	
UPPER MISSISSIPPI RIVER BASIN	
HYDROGRAPHIC SURVEY	
RIVER MILES 66.7 - 70.7	

DATE OF PHOTO MOSAIC: 22-24 FEB 2006	
ST. LOUIS GAGE: -1.7, -1.8, -1.3	
CAIRO GAGE: 211, 201, 19.5	

PLATE NUMBER
65



SEE PLATE NO. 64

SEE PLATE NO. 66



DATE OF PHOTO MOSAIC: 22-24 FEB 2006
ST. LOUIS GAGE: -1.7, -1.8, -1.3
CAIRO GAGE: 211, 201, 19.5