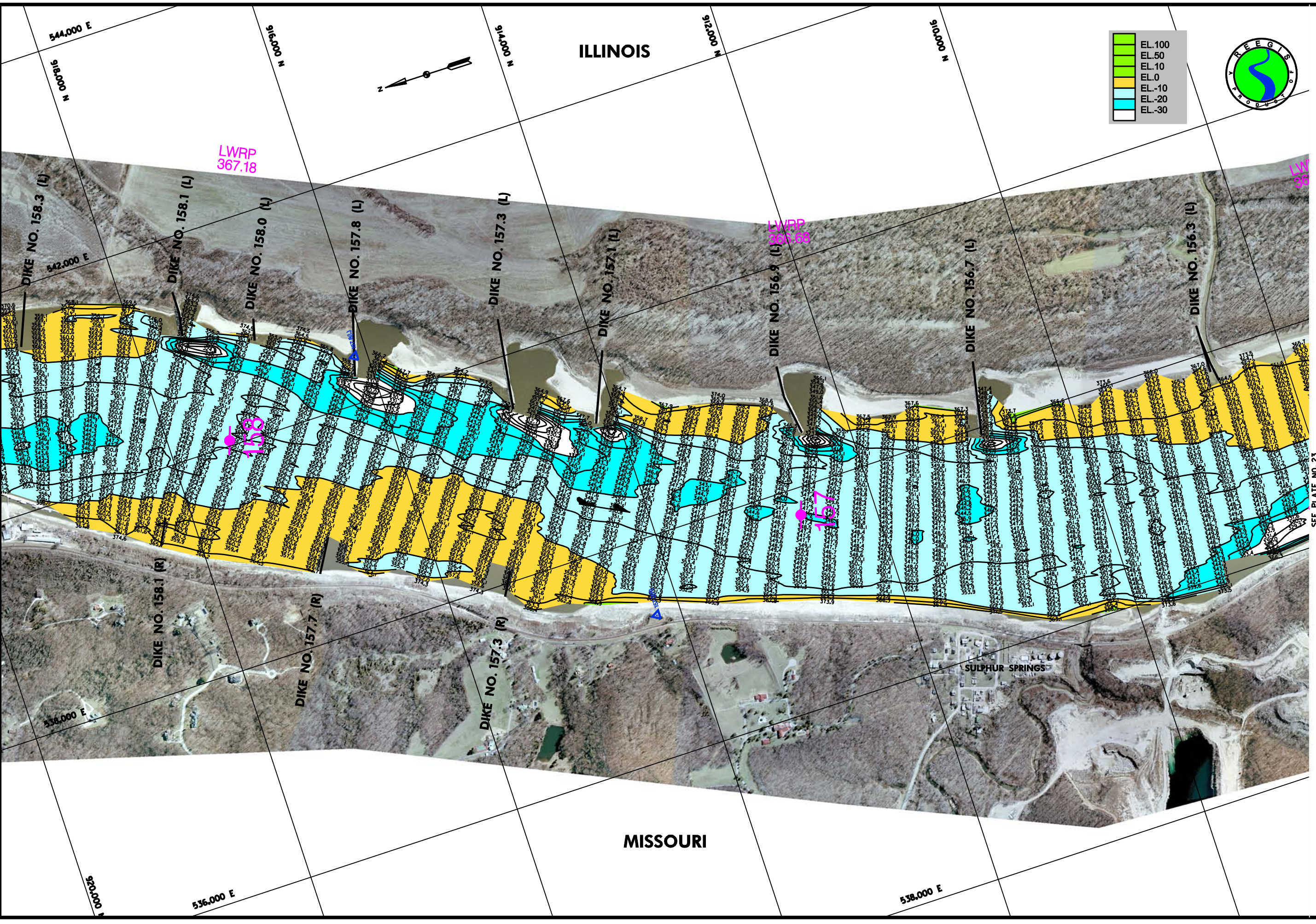


GAGE RECORD	
WATER SURFACE	SELMA
ZERO N.G.D.	0.00
WATER POINT	ST. LOUIS 379.34
WILE	186.5
L.W.R.P.	36.00
DATE	27 DEC 2007
FILE NO.	374.15
PHOT. DATE	N/A
PHOT. SCALE	N/A
PHOT. TYPE	STEREOPAIR
PHOT. YEAR	2007
PHOT. NUMBER	374.15
PHOT. DATE	27 DEC 2007
PHOT. SCALE	N/A
PHOT. TYPE	STEREOPAIR
PHOT. YEAR	2007
PHOT. NUMBER	374.15

U.S. ARMY ENGINEER DISTRICT	ST. LOUIS, MISSOURI
CORPS OF ENGINEERS	
UPPER MISSISSIPPI RIVER BASIN	
HYDROGRAPHIC SURVEY	
RIVER MILES 156.2 - 158.3	

DATE OF PHOTO MOSAIC: 22-24 FEB 2006  
 ST. LOUIS GAGE: -1.7, -1.8, -1.3  
 CAIRO GAGE: 21.1, 20.1, 19.6

PLATE NUMBER  
 22



SEE PLATE NO. 21

SEE PLATE NO. 23

Surveyed by:	HANSON ENGINEERING	Survey Date:	December 27, 2007
Drawn by:	VICTOR BERGMANN	Checked by:	DARIN LAMM
Submitted:	JAMES L. KEIM	Reviewed by:	JAMES KEIM
Chief, Engr. Dist. Miss. Sect. Chief, Geospatial Branch		APPROVED:	KEITH L. SHORT
			Chief, Geospatial Branch

REGISTRATION