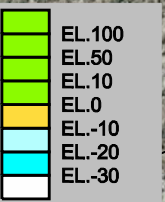
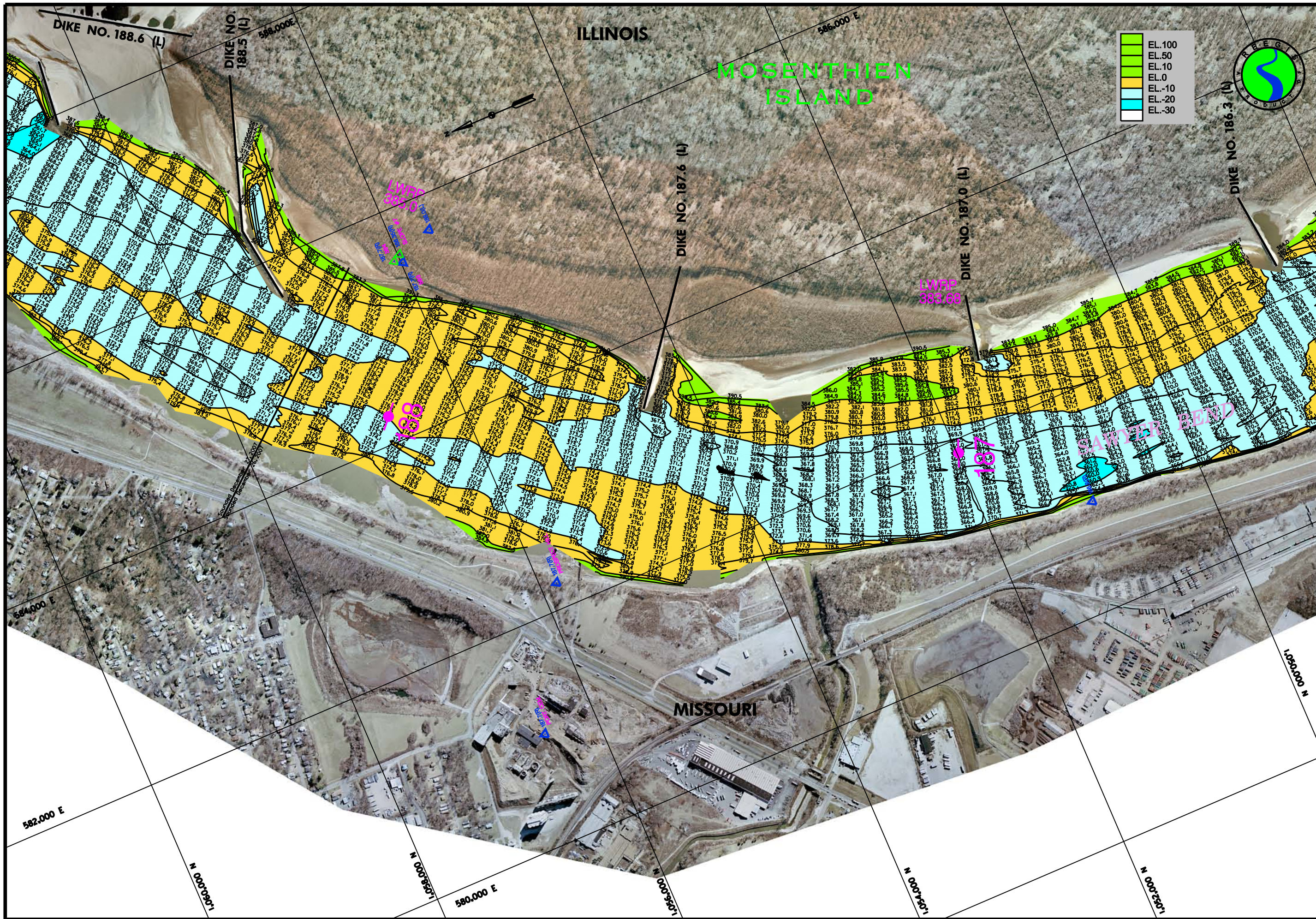


SEE PLATE NO. 6



WATER SURFACE	GAUGE RECORD	CHAIN OF ROCKS (L)	HARTFORD
ZERO N.G.D.	381.50	409.83	354.0
WILE	183.4	190.3	196.8
L. W. R. P.	378.25	388.50	396.2
26 DEC 2007	390.9	N/A	N/A
27 DEC 2007	393.3	N/A	N/A

ELEVATIONS ARE REFERRED TO NAD83. CONTOURS ARE BELOW 1984-87 USE WATER REFERENCE ELEVATION 1000.000 C.F.S.J.

Surveyed by:	Survey Dates:	Reviewed by:
HANSON ENGINEERING	December 26-27, 2007	JAMES KEIM
Drawn by: <td>Check by: <td>Approved by: </td></td>	Check by: <td>Approved by: </td>	Approved by:
VICTOR BEHRMANN	DAWN LAMM	KEITH L. SHORT
SUBMITTED: <td>Chief, Eng. Div. <td>Chief, Geospatial Branch</td> </td>	Chief, Eng. Div. <td>Chief, Geospatial Branch</td>	Chief, Geospatial Branch
JAMES L. KEIM	Chief, Eng. Div.	Chief, Geospatial Branch

File name: 188.4

U.S. ARMY ENGINEER DISTRICT
CORPS OF ENGINEERS
ST. LOUIS, MISSOURI

UPPER MISSISSIPPI RIVER BASIN
HYDROGRAPHIC SURVEY
RIVER MILES 186.4 - 188.4

240 METERS
120 METERS
0 METERS
400 FEET
200 FEET
0 FEET

DATE OF PHOTO MOSAIC: 22-24 FEB 2006
ST. LOUIS GAGE: -1.7, -1.8, -1.9
CAIRO GAGE: 211, 201, 19.6

PLATE NUMBER
7