

# Formerly Utilized Sites Remedial Action Program

## The St. Louis Sites

***FUSRAP***

***December 9, 2015***



**BUILDING STRONG®**

# Purpose

- Protect Human Health and the Environment
- Committed to transparency and accuracy of information.
- Progress of planned execution.



# Goals

- Coldwater Creek sampling update
  - ▶ Completed, continuing, and next section
- Remediation update
  - ▶ St. Cin Park - continuing
  - ▶ Duchesne Park – begin after St. Cin
  - ▶ Palm Drive – extensive preparatory work
- New properties
  - ▶ Testing is still ongoing
- Follow the Record of Decision which explains the selected remedy



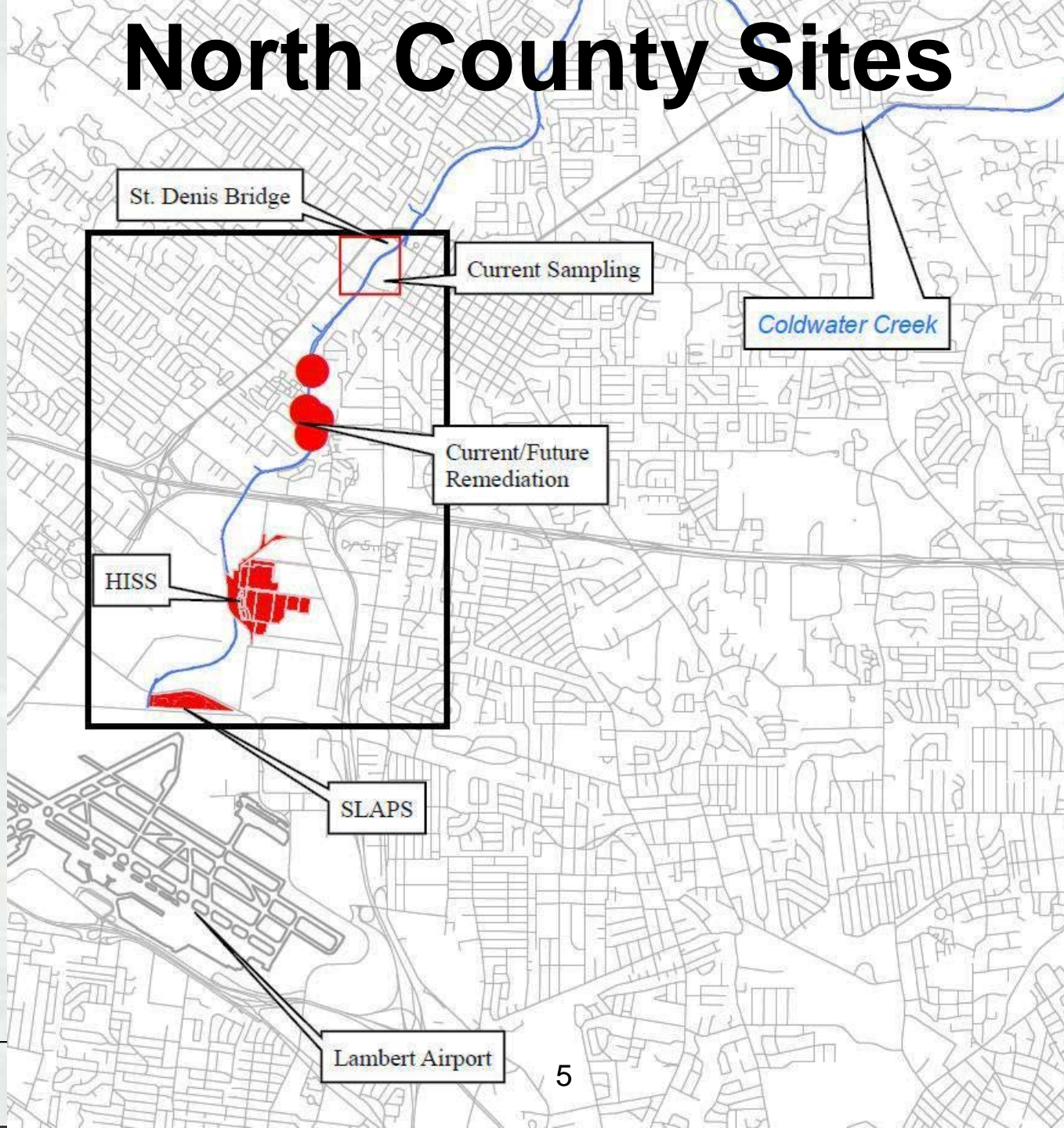
# St. Louis FUSRAP Sites

- St. Louis Downtown Site (SLDS) - **Ongoing**
- North St. Louis County Sites
  - ▶ St. Louis Airport Site (SLAPS) - **Complete**
  - ▶ Hazelwood Interim Storage Site (HISS)/  
Futura and Latty Avenue Vicinity Properties  
(VPs) - **Complete**
  - ▶ SLAPS Vicinity Properties (SLAPS VPs)
    - **Coldwater Creek**





# North County Sites



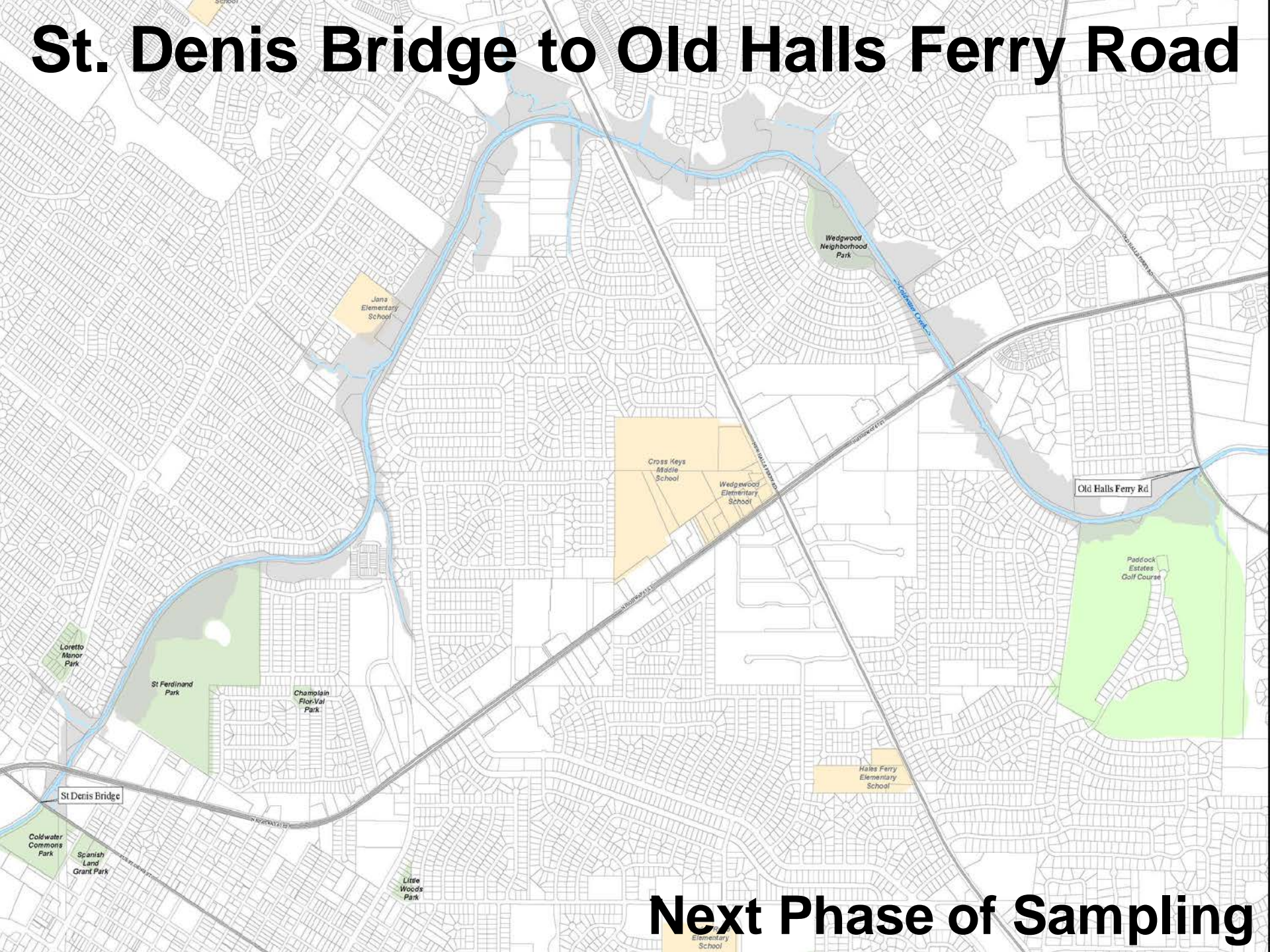
# Coldwater Creek

- **Over 8,000 samples collected and analyzed**
- **Completed Sampling from Mc Donnell Blvd. to Frost Ave.**
- **Continue Sampling - Frost Ave. to St. Denis Bridge**
  - ▶ Includes soil, sediment, creek banks and 10-Year Flood Plain on properties adjacent to CWC (10-Yr Flood Plain is a starting point)
  - ▶ 3.4 mile stretch of creek
  - ▶ Sampling additional residential areas adjacent to St. Cin Park and Cades Cove
- **Next sampling event from St. Denis Bridge to Old Halls Ferry Road**
  - ▶ 4.0 mile stretch of creek
  - ▶ Sampling to tentatively start in late 2016





# St. Denis Bridge to Old Halls Ferry Road



## Next Phase of Sampling

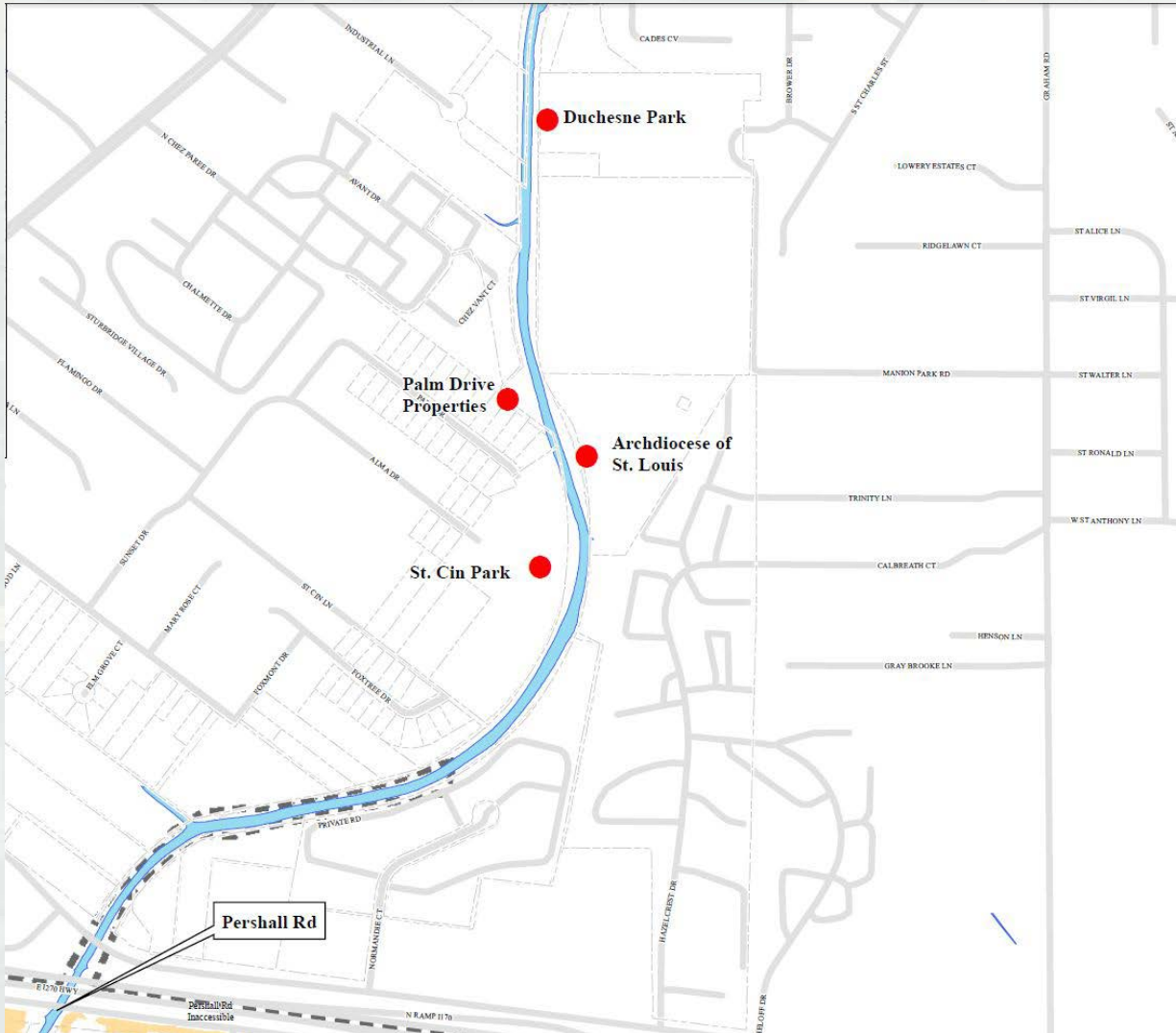
# Areas of Contamination Adjacent to Coldwater Creek

- Sampling from Frost Ave. to St. Denis Bridge revealed areas of contamination adjacent to CWC at:
  - ▶ St. Cin Park – City of Hazelwood
  - ▶ Duchesne Park – City of Florissant
  - ▶ Palm Drive Properties – City of Hazelwood
  - ▶ Archdiocese Property adjacent to CWC





# Areas Adjacent to Coldwater Creek



# Remediation of St. Cin Park

- Remedial activities continue:
  - ▶ Over 2,700 cubic yards removed to date
  - ▶ The USACE is working with the City of Hazelwood to complete restoration of the park to its previous condition
  - ▶ Estimated completion February 2016



# Duchesne Park

- Contamination is subsurface and does not pose a risk in it's current configuration.
- Remedial activities will start after the completion of St. Cin Park.
- City of Florissant will close Duchesne Park during remediation.





# Duchesne Park



Initial Excavation

Duchesne  
Park

# Palm Drive Properties

- Contamination is subsurface and does not pose a risk in it's current configuration.
- Palm Drive properties consist of residential properties and MSD property adjacent to CWC
- Extensive preparatory work required before the start of remedial activities
  - ▶ Temporary re-location of back yard utility poles
    - Ameren is scheduled to move utility poles in January 2016
  - ▶ Tree removal in areas of excavation
  - ▶ Temporary re-location of fences
  - ▶ Prepare haul route





# Palm Drive Properties

Initial Excavation

Coldwater Creek

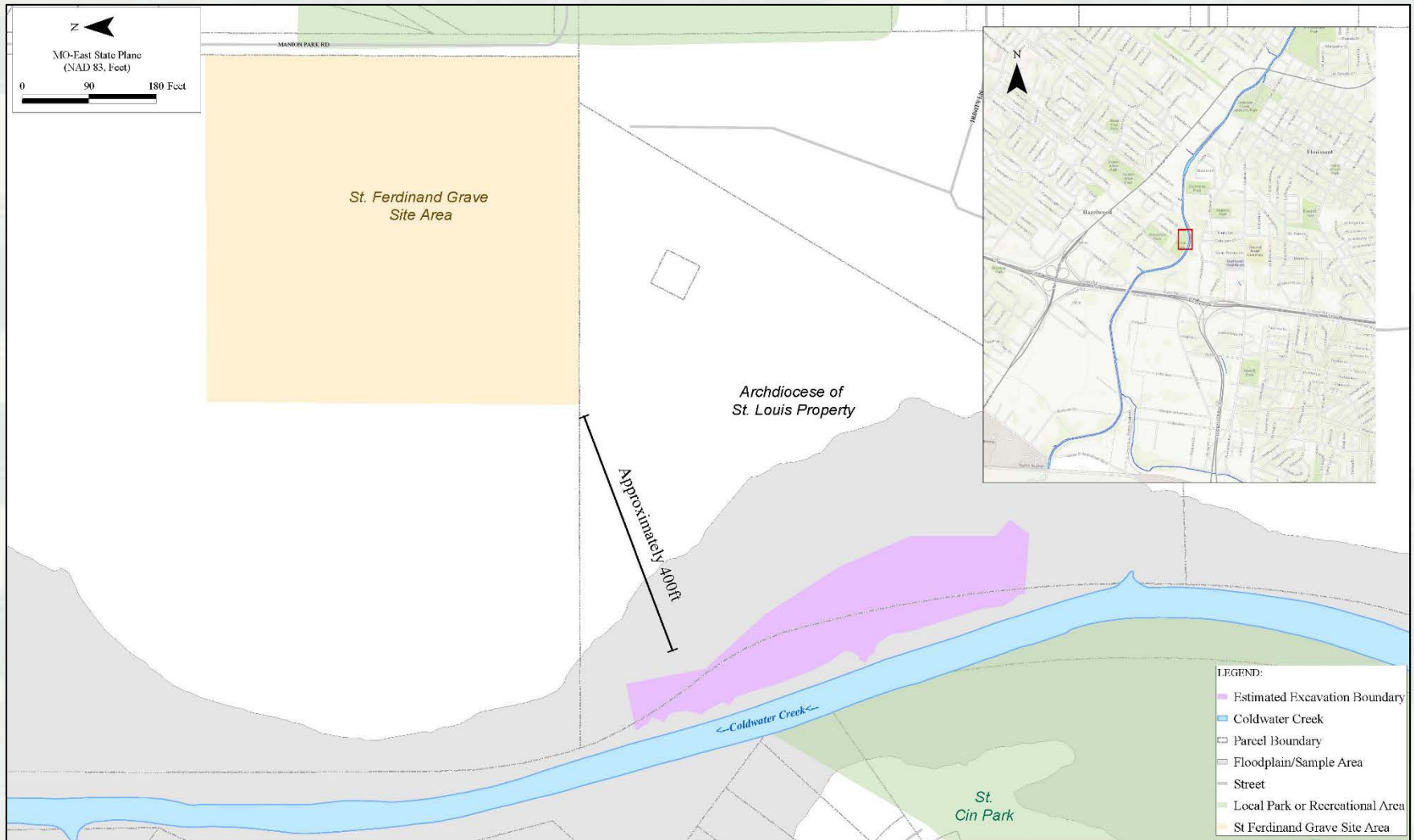


# Archdiocesan Property

- St. Ferdinand Cemetery is not contaminated.
- Contamination found at Archdiocesan property adjacent to Coldwater Creek.
- Nearest grave sites are approximately 400 ft. from closest contamination.

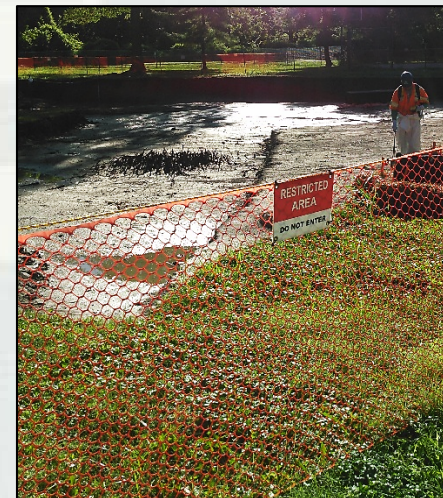


# Archdiocesan Property



# Safety Measures during Remedial Activities

- Public and worker safety are our top priorities.
- Segregating the remedial work area from the public.
- Restricting area around the remediation area to prevent the spread of contamination to uncontaminated areas.
- Fencing to control unauthorized access to the work area.
- Appropriate warning signs, barricades, and rope to demarcate contaminated areas.





# Safety Measures Cont.

- Air monitoring is conducted continuously during work hours.
- Air monitoring locations are chosen based on the excavation location, wind direction, and the activities to be performed.
- Storm water is collected from the excavation, treated and tested before release.
- Dust is controlled by spraying the soil with water
- Geotextile fabric is used as cover for spoils piles as needed.



# Safety Measures Cont.

- Trucks have sift-proof gates and are covered with a tarp.
- Trucks are visually inspected for the presence of soil/sediment/debris and the exteriors are cleaned, if necessary, prior to leaving the remediation area.



- Trucks are radiologically surveyed prior to leaving the remediation area.
- Truck haul routes are radiologically surveyed weekly.
- All personnel and equipment that exit restricted area are surveyed before leaving the area.



# For Questions and Information

- For more information on the St. Louis FUSRAP sites visit <http://www.mvs.usace.army.mil> or <http://bit.ly/FUSRAPstl>
- For questions and comments concerning the St. Louis FUSRAP Sites please call Public Affairs at 314.331.8000

