

# Formerly Utilized Sites Remedial Action Program

## - The St. Louis Sites

***FUSRAP***

***February 17, 2016***



**BUILDING STRONG®**

# FUSRAP Overview

- The Formerly Utilized Sites Remedial Action Program is an environmental remediation program that addresses radiological contamination generated by our nation's early atomic weapons program.
- FUSRAP execution transferred from Dept. of Energy to the U.S. Army Corps of Engineers in Oct 1997
- Legally required to follow the Comprehensive Environmental Response, Compensation, and Liability Act (CERCLA) /National Contingency Plan (NCP) Process
- Funded annually by Congress
- FUSRAP Objectives
  - ▶ Protect Human Health and the Environment
  - ▶ Follow the Record of Decision which explains the selected remedy



**BUILDING STRONG®**

# FUSRAP Sites

## St. Louis FUSRAP Sites

- **North St. Louis County Sites**
  - St. Louis Airport Site (SLAPS)
  - SLAPS Vicinity Properties (SLAPS VPs)
    - Coldwater Creek – Banshee Rd. to Missouri R.
    - Latty Avenue Properties (Latty)
      - Hazelwood Interim Storage Site (HISS)/ Futura
      - Latty Avenue Vicinity Properties
- **St. Louis Downtown Site (SLDS)**

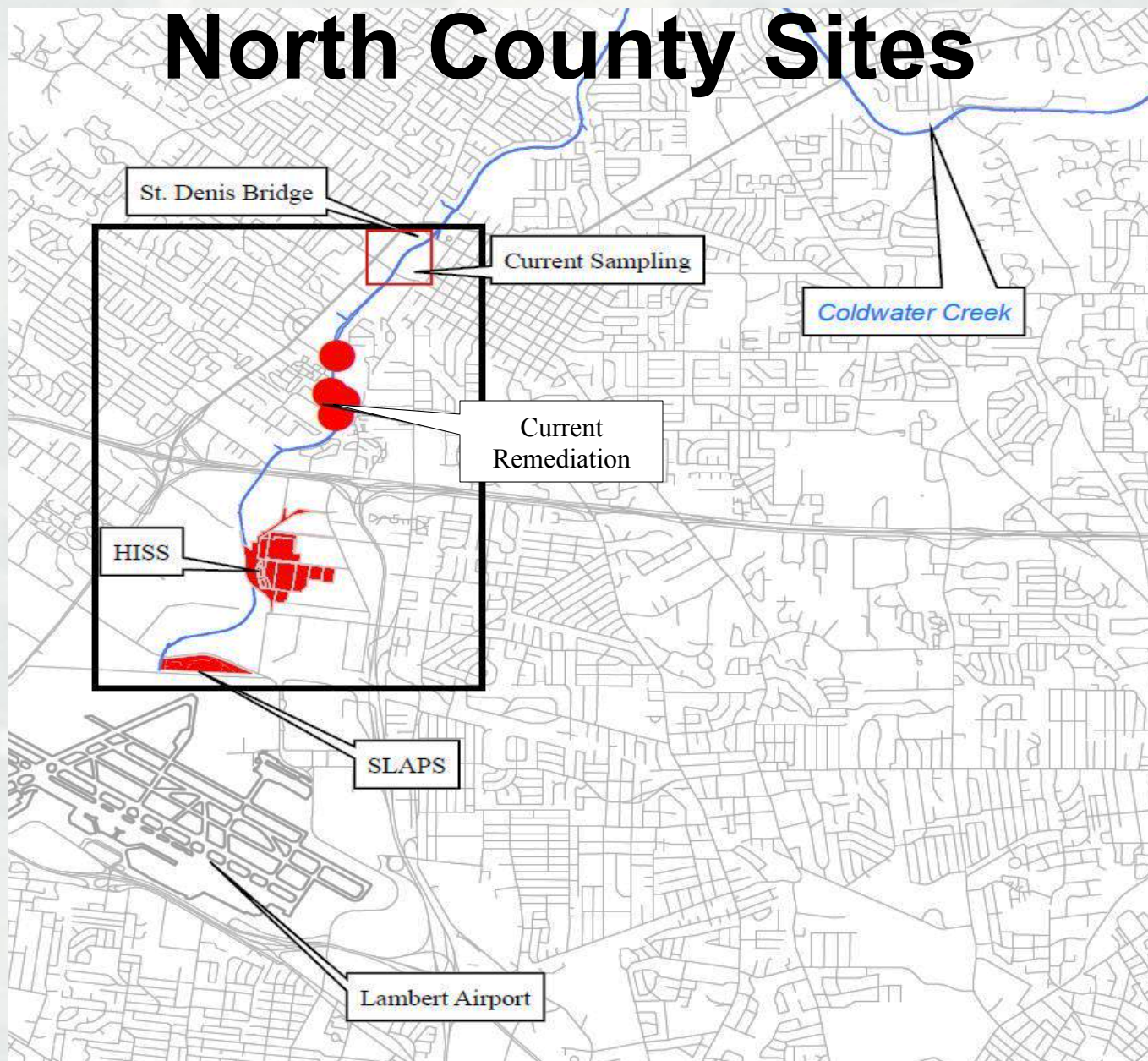
## Iowa FUSRAP Site

- Iowa Army Ammunition Plant





# North County Sites





# SLAPS Vicinity Properties (VPs)

- More than 68,000 cubic yards removed to date
- 76 VPs returned to beneficial use
- Continue to sample the haul routes and remaining VPs
- Includes Coldwater Creek



**BUILDING STRONG®**

# Coldwater Creek Sampling

## Continue: Frost Ave to St. Denis Bridge

- Sediment, creek banks and 10-Year floodplain on adjacent properties
- 3.4 mile stretch of creek
- Exhaustive ground walkover surveys (soils, structures, utilities, pavement)
- More than **8,500** samples taken to date; more than 500/month
- More than 90% free of North County ROD contaminants of concern
- Fewer elevated levels as we progress downstream
- Findings consistent with our conceptual site model

## Next Sampling: St. Denis Bridge to Old Halls Ferry Road

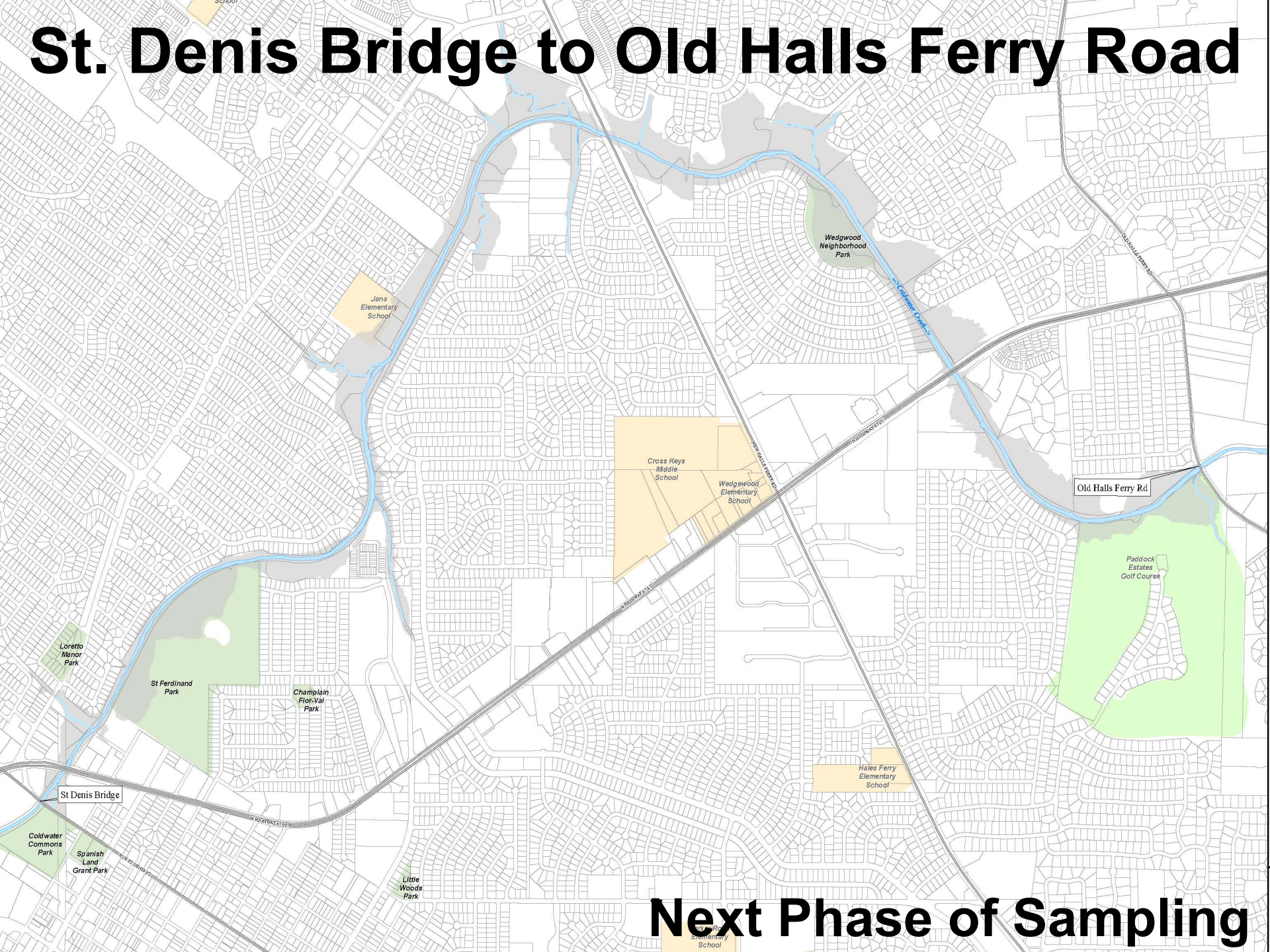
- 4.0 mile stretch of creek
- Tentatively start in late 2016



**BUILDING STRONG®**



# St. Denis Bridge to Old Halls Ferry Road



## Next Phase of Sampling



# **Properties Adjacent to Coldwater Creek Confirmed Contamination**

## **Frost Ave to St. Denis Bridge**

- St. Cin Park – City of Hazelwood
- Duchesne Park – City of Florissant
- Palm Drive Properties
- Archdiocese Property



**BUILDING STRONG®**

# St. Cin Park Remediation

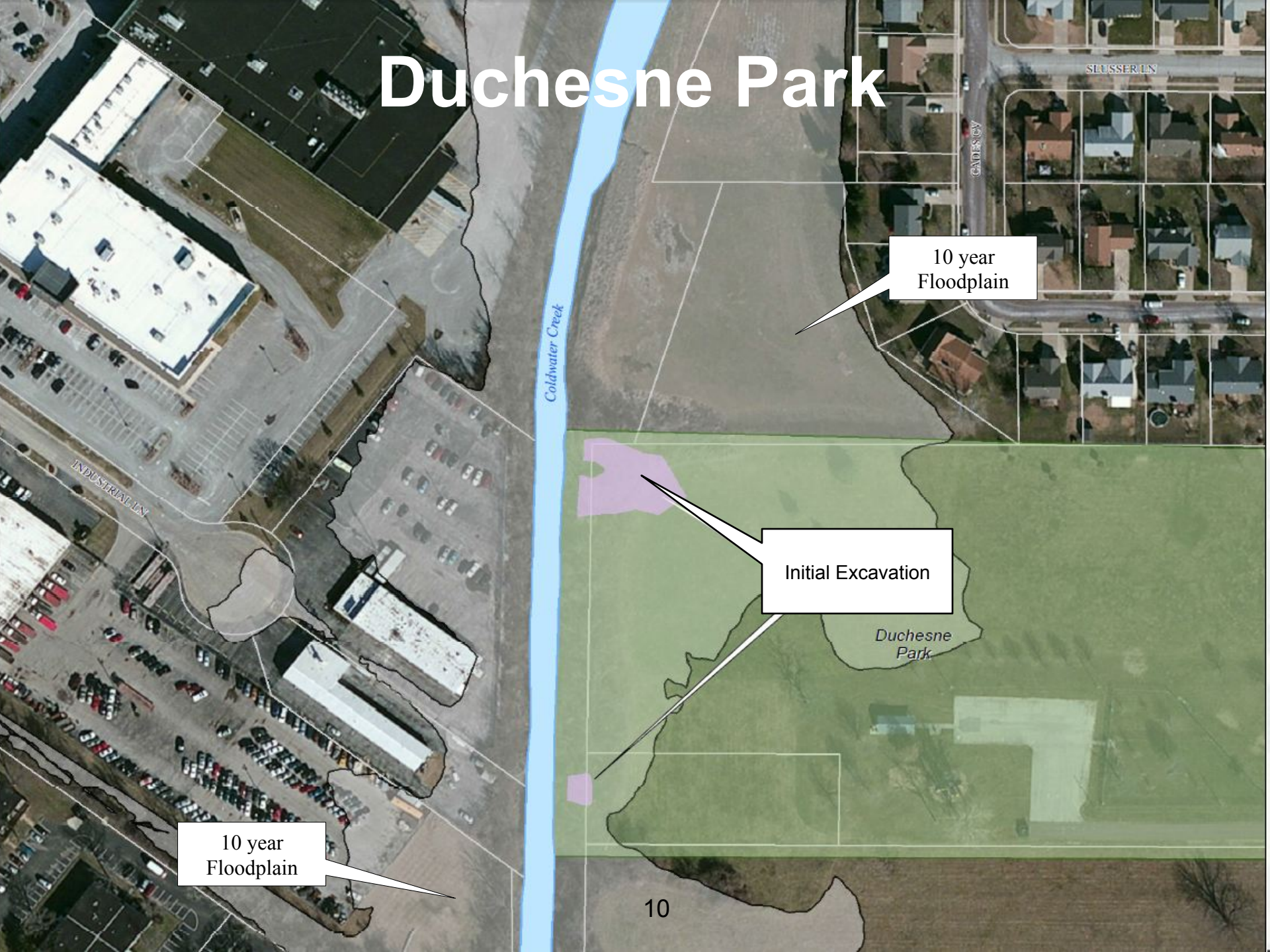
- Low levels of contamination found
- Remedial activities completed
- More than **3,400** cy excavated and shipped
- Working with the City of Hazelwood to restore the park



**BUILDING STRONG®**



# Duchesne Park



10 year  
Floodplain

Initial Excavation

Duchesne  
Park

10 year  
Floodplain

10



# Duchesne Park Remediation

- Remediation design completed
- Pre-remediation site activities have started
- Contamination does not pose a risk in it's current configuration. (Min. 6" below surface)
- City of Florissant will close Duchesne Park during remediation.
- USACE will fence off excavation area
- Restoration following remediation



**BUILDING STRONG®**

# Palm Drive Properties

10 year  
Floodplain

10 year  
Floodplain

Initial Excavation

Coldwater Creek



# Palm Drive Properties

- Contamination does not pose a risk in it's current configuration.  
(Min. 6" below surface)
- Residential properties and MSD property adjacent to CWC within 10-year floodplain
- Walkover surveys and sampling in vicinity properties up to 100-year floodplain
- Preparatory work before the start of remedial activities
  - Temporary re-location of back yard utility poles
    - ▷ Awaiting a schedule to be firmed up by Ameren
  - Tree removal in areas of excavation
  - Temporary re-location of fences
  - Prepare haul route
- Planning remediation following Duchesne Park





# St. Louis Airport Site

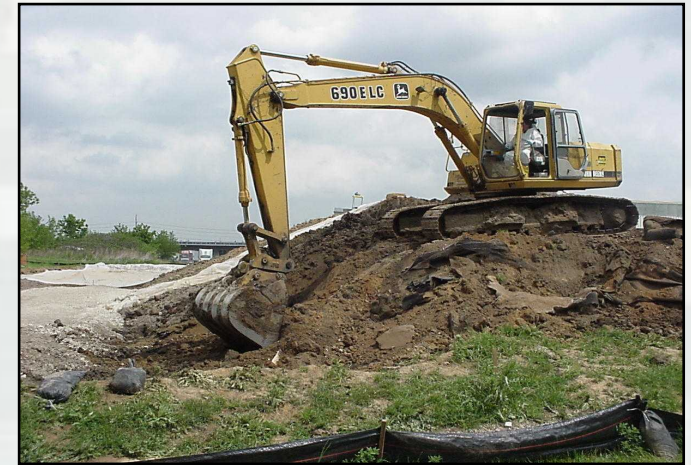
- **Source of Contamination**
- **Status of Response Action**
  - ▶ RA Completed in 2007
  - ▶ Transfer to DOE pending completion of North County ROD work
- **Extent of Contamination**
  - ▶ 621,000 cy on 21.7-acre site
    - Adjacent to Lambert St. Louis International Airport
    - National Priority List site
- **Post Remedial Action**
  - ▶ Air and ground water monitoring implemented



**BUILDING STRONG®**

# Latty Avenue Properties (HISS/Futura/Latty VPs)

- **Source of Contamination**
- **Status of Response Action**
  - ▶ RA completed in 2013
  - ▶ Completed Final Status Documents
  - ▶ Preparing Institutional Controls for soils beneath Futura Buildings
- **Extent of Contamination**
  - ▶ 227,000 cy on 11 acres
  - ▶ 1 mile north SLAPS
  - ▶ 1 NPL Site (i.e. HISS/Futura Coatings)
- **Post Remedial Action**
  - ▶ Air and ground water
  - ▶ monitoring implemented



**BUILDING STRONG®**



# St. Louis Downtown Site



- **Extent of Contamination**
  - Uranium, Radium, Thorium Cadmium and Arsenic are the contaminants of concern.
  - Includes the 47-acre Mallinckrodt facility and adjacent Vicinity Properties



- **Environmental Documentation**
  - Accessible Soils ROD - 1998
  - Inaccessible Soils Group 1 ROD - 2014
- **Status of Remediation**
  - Approximately 274,000 cy shipped through 2015.
  - Currently remediating in Plant 6WH at the former Building 101 area.





# For Questions and Information

## Website

- St. Louis District Website <http://www.mvs.usace.army.mil>
- FUSRAP Website <http://bit.ly/FUSRAPstl>

## General Information

- Public Affairs Office, 314-331-8095

## Newsletter

- Bi-annual; sign up list at USACE tables

**Administrative Record** – Documents are available for viewing at the following locations:

- **FUSRAP Office**, 8945 Latty Ave., Berkeley, MO  
(314.260.3905)
  - Hours: 8am-3pm, Monday through Friday – By Appointment
- **St. Louis City Library**, 1301 Olive Street, St. Louis, MO  
(314.241.2288 - By appointment only)

