

OPEN HOUSE ★ ST. LOUIS FORMERLY UTILIZED SITES REMEDIAL ACTION PROGRAM ★ JUNE 12, 2024



US Army Corps
of Engineers®



U.S. ARMY

AGENDA



- **Introductions and Ground Rules**
- **Opening comments:**
 - Brig. Gen. Kimberly Peeples, Commanding General, Mississippi Valley Division
 - Col. Andy Pannier, Commander and District Engineer, St. Louis District
- **FUSRAP Program Overview**
- **Site Updates:**
 - St. Louis Downtown Site (SLDS)
 - North St. Louis County Site (SLAPS, Latty Properties, SLAPS VPs)
- **Current / Future Work**
- **Signage**
- **Questions and Comments**
- **Open House**



U.S. ARMY

OPENING REMARKS

4



Brig. Gen. Kimberly Peeples
Commander
Mississippi Valley District



Col. Andy J. Pannier
Commander & District Engineer
St. Louis District



U.S. ARMY

FUSRAP PROGRAM OVERVIEW

5



Mission: Protect Human Health and the Environment by identifying and remediating radiological contamination generated by our nation's early atomic program.

Execution: Transferred from Dept. of Energy to the U.S. Army Corps of Engineers in Oct 1997 for remediation. DOE has long-term stewardship.

Guidance:

- Legally required to follow the Comprehensive Environmental Response, Compensation, and Liability Act (CERCLA)
- Follow the Record of Decision (ROD) which explains the selected remedy

Funding:

- Annually by Congress through public law
- Covers all Mission Sites
- Civil Works Budget Website: <https://www.usace.army.mil/missions/civil-works/budget/>





U.S. ARMY

6



CERCLA OVERVIEW

Comprehensive Environmental Response, Compensation, and Liability Act

Pre-Investigation Phase

Potentially Eligible (DOE)

Preliminary Assessment/
Site Inspection

Site Designation

Investigation Phase

Remedial Investigation

Feasibility Study

Proposed Plan

Record of Decision

Remedial Action Phase

Remedial Design
(if necessary)

Remedial Action
(if necessary)

Project Completion

Long-Term Management (DOE)

Pre-Design
Investigation
Sampling

Right of
Entry

Five-Year
Review

A removal action may be initiated at any time during the process if human health or the environment is in immediate danger.

Source: <https://www.usace.army.mil/Media/News/NewsSearch/Article/3667315/annual-fusrap-report-available-online/>

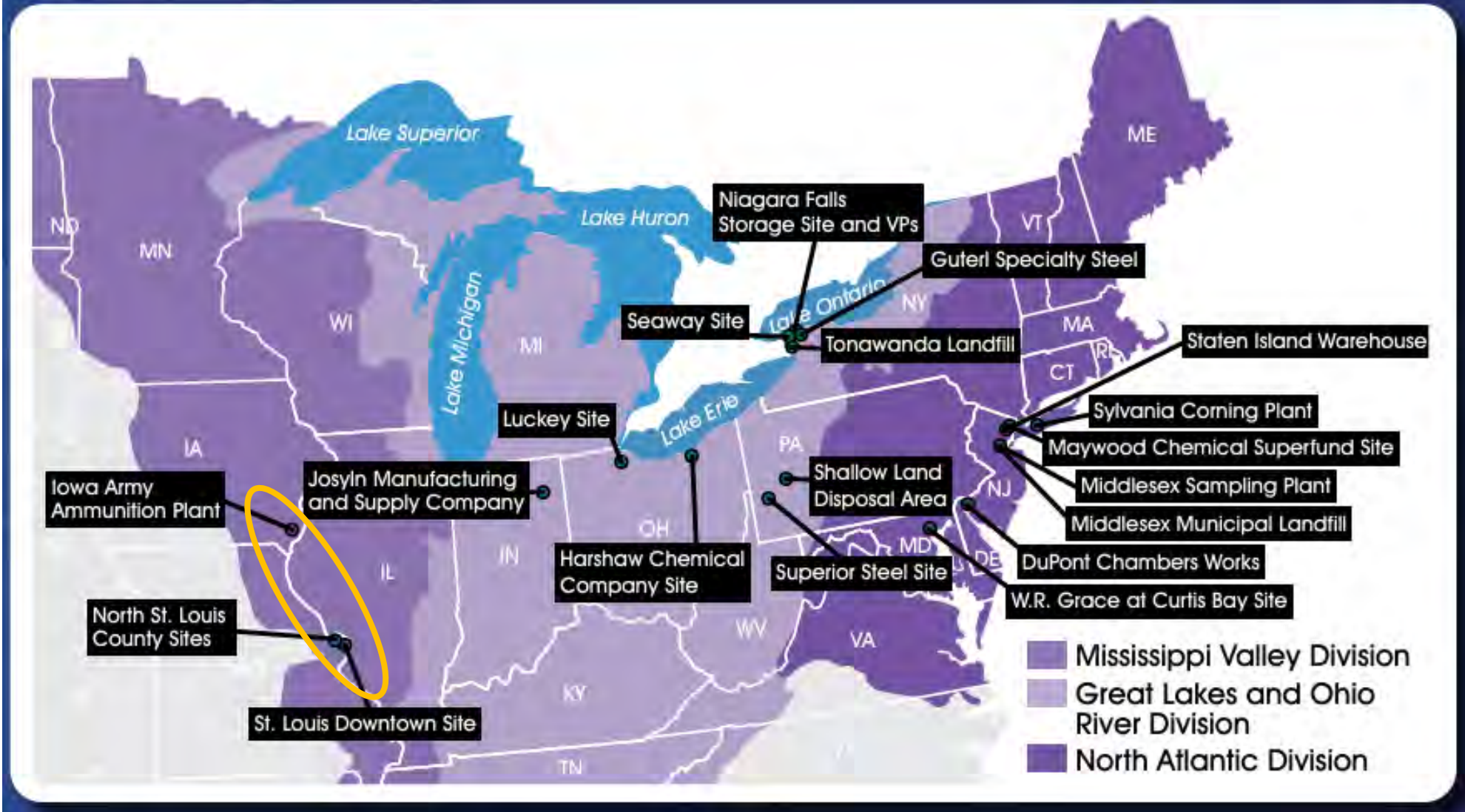


U.S. ARMY



FUSRAP NATIONAL PROGRAM

Active FUSRAP Sites





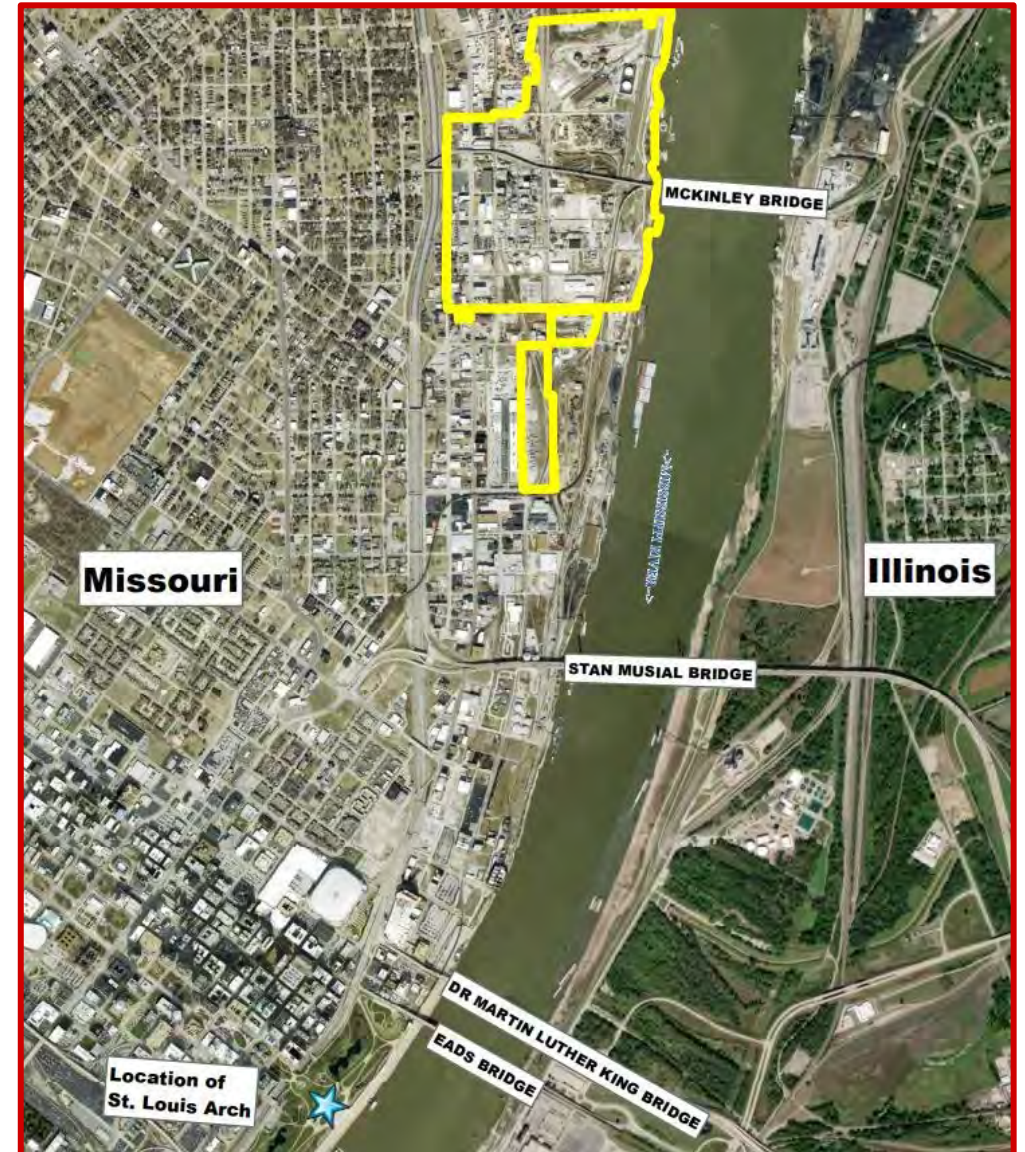
U.S. ARMY

ST. LOUIS DOWNTOWN SITE (SLDS)

9



- SLDS is about 210 acres of land
 - 45 acres chemical manufacturing complex (Mallinckrodt).
 - 165 acres of adjacent industrial and commercial properties.
- Primary contaminants of concern (COCs)
 - Uranium, thorium, radium, arsenic, and cadmium
- SLDS is divided into 2 operable units or OU:
 1. Accessible Soil and Groundwater OU - 1998 Record of Decision (ROD)
 2. Inaccessible Soil OU





U.S. ARMY

SLDS Site Boundary

General Area of Mallinckrodt
Plants/Property

Adjacent Properties





U.S. ARMY

ST. LOUIS DOWNTOWN SITE (SLDS)

11

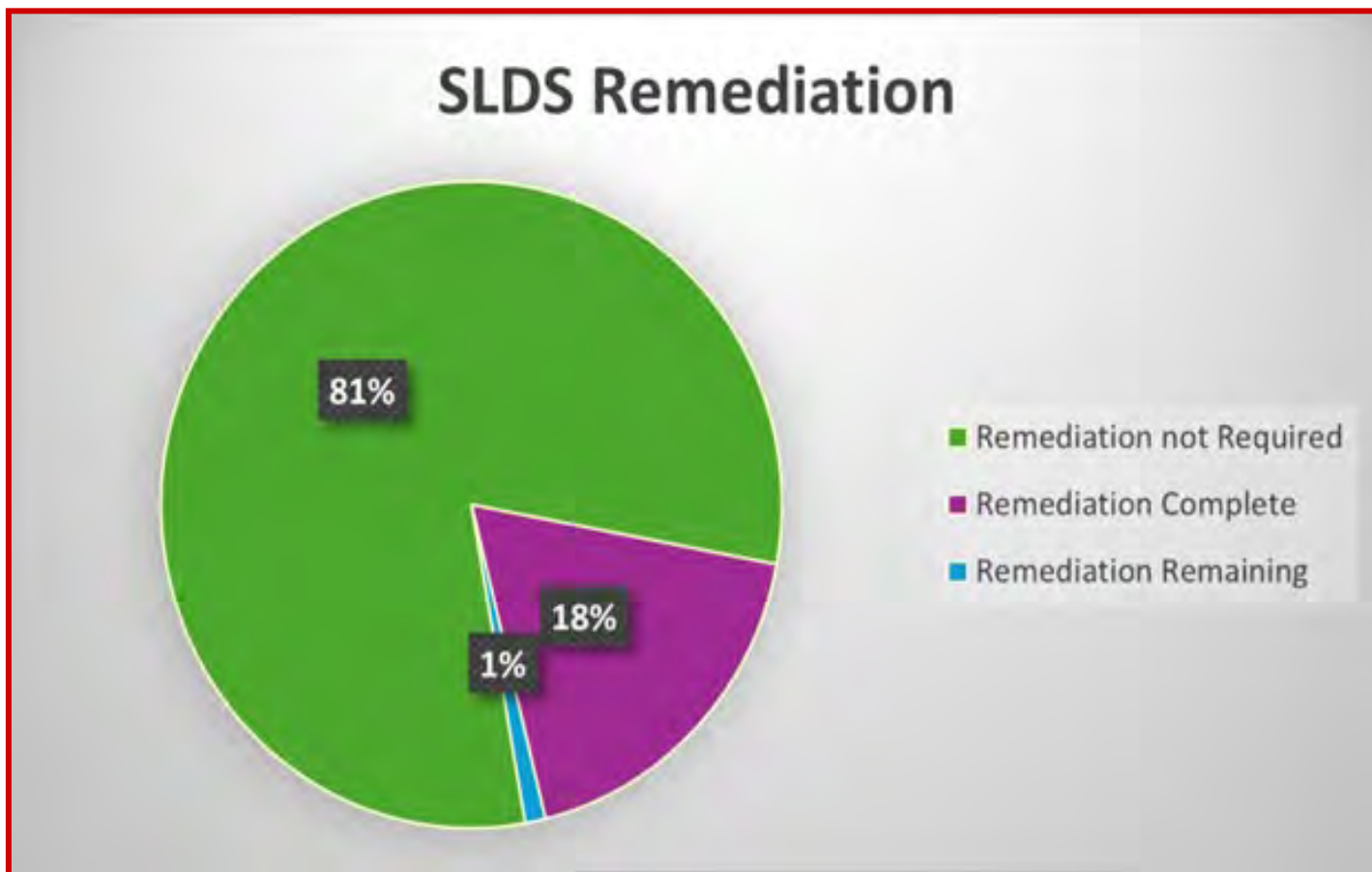


Since 1997

- 341,485 cubic yards, that is about 4,114 rail cars
- 53 properties/areas released for beneficial use

Since last year public meeting

- 5,399 cubic yards (~65 rail cars)
- Areas completed:
 - Mallinckrodt Plant 2 North
 - Mallinckrodt Plant 1 Tank Farm
 - City Property (Bike Path)





U.S. ARMY

12



SLDS ENGINEERING CHALLENGES



Sampling after bldg. demo



Extensive use of sheet pile



Remediation in
small spaces



U.S. ARMY

FY25 AND BEYOND WORK AHEAD

13



- Continue evaluating areas with soils previously considered inaccessible to determine the presence and level of contamination
- Remediate areas as required in our Record of Decision
- Continue groundwater monitoring
- Provide utility support in work activities to ensure the safety of utility personnel
- Remedy is expected to be complete in FY29
- Transfer to Dept of Energy – Legacy Management



U.S. ARMY

NORTH ST. LOUIS COUNTY SITES – BIG EFFORT

14



- **SLAPS**
 - 7500 railcars of soil shipped
 - Mission complete 2007
- **Latty Avenue Properties**
 - 2700 railcars of soil shipped
 - Mission complete 2013
- **SLAPS Vicinity Properties**
 - 3000 railcars of soil shipped
 - Mission ongoing
 - 2200 acres, includes 14 miles of Coldwater Creek





U.S. ARMY

REST OF NORTH ST. LOUIS COUNTY VICINITY PROPERTIES

15



Residential Portion

Missouri River





U.S. ARMY

COLDWATER CREEK COMPLEXITIES

16





U.S. ARMY



COLDWATER CREEK COMPLEXITIES





U.S. ARMY



COLDWATER CREEK COMPLEXITIES





U.S. ARMY

19



COLDWATER CREEK COMPLEXITIES





U.S. ARMY

COLDWATER CREEK COMPLEXITIES

20





U.S. ARMY

PROGRESS IN THE RESIDENTIAL PORTION

21



CWC-386 BEFORE REMEDIATION





U.S. ARMY

22



PROGRESS IN THE RESIDENTIAL PORTION





U.S. ARMY

PROGRESS IN THE RESIDENTIAL PORTION

23

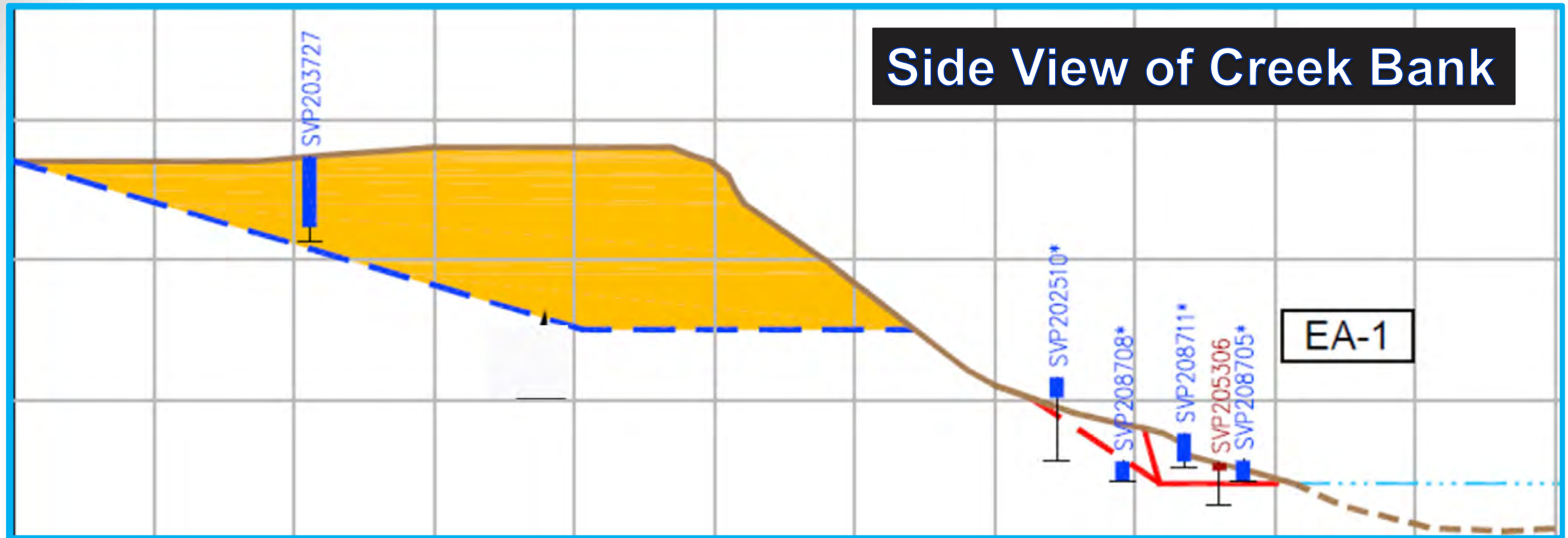




U.S. ARMY

PROGRESS IN THE RESIDENTIAL PORTION

24



- Uncontaminated Soil Samples
- Uncontaminated Soil to Remove
- Contaminated Soil Sample
- Dig Depth for Contaminated Soil
- Bank Slope and Creek Bottom
- CWC Water Level



U.S. ARMY

25



PROGRESS IN THE RESIDENTIAL PORTION





U.S. ARMY

PROGRESS IN THE RESIDENTIAL PORTION

26



Creek Water
Pump Around



U.S. ARMY

PROGRESS IN THE RESIDENTIAL PORTION

27



ACTIVE REMEDIATION





U.S. ARMY

PROGRESS IN THE RESIDENTIAL PORTION

28



ACTIVE REMEDIATION





U.S. ARMY

PROGRESS IN THE RESIDENTIAL PORTION

29



WALKOVER GAMMA SURVEY



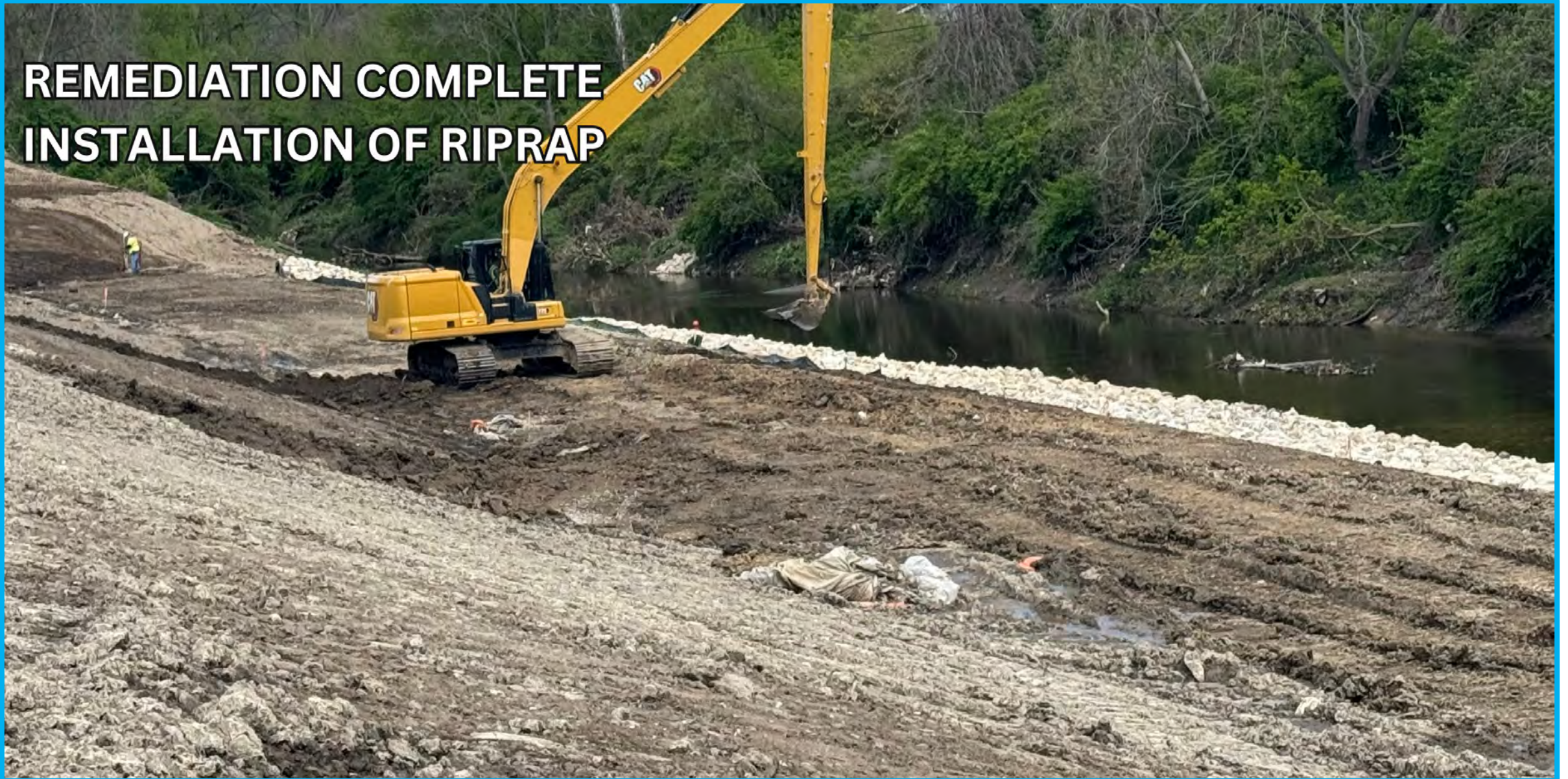
U.S. ARMY

PROGRESS IN THE RESIDENTIAL PORTION

30



**REMEDICATION COMPLETE
INSTALLATION OF RIPRAP**





U.S. ARMY

PROGRESS IN THE RESIDENTIAL PORTION

31



MICRO-SEEDING





U.S. ARMY

PROGRESS IN THE INDUSTRIAL PORTION

32





U.S. ARMY

CURRENT WORK

33



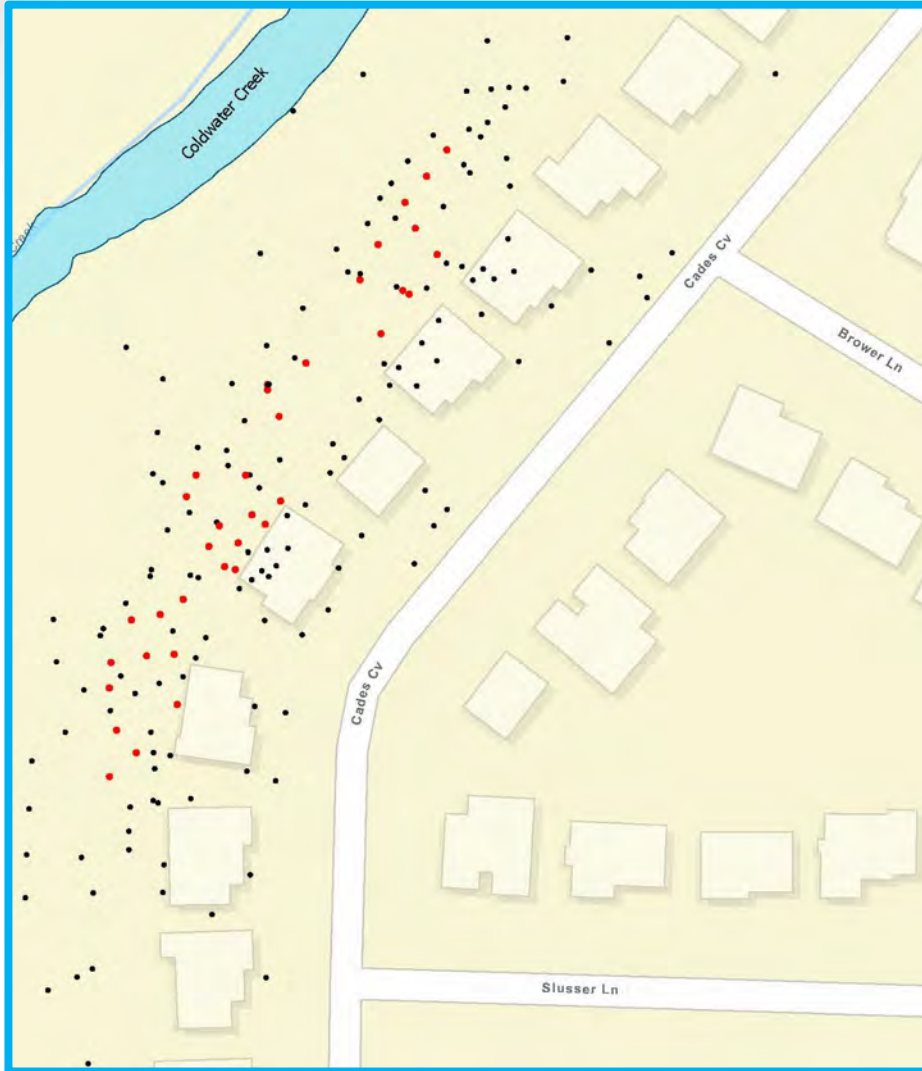


U.S. ARMY

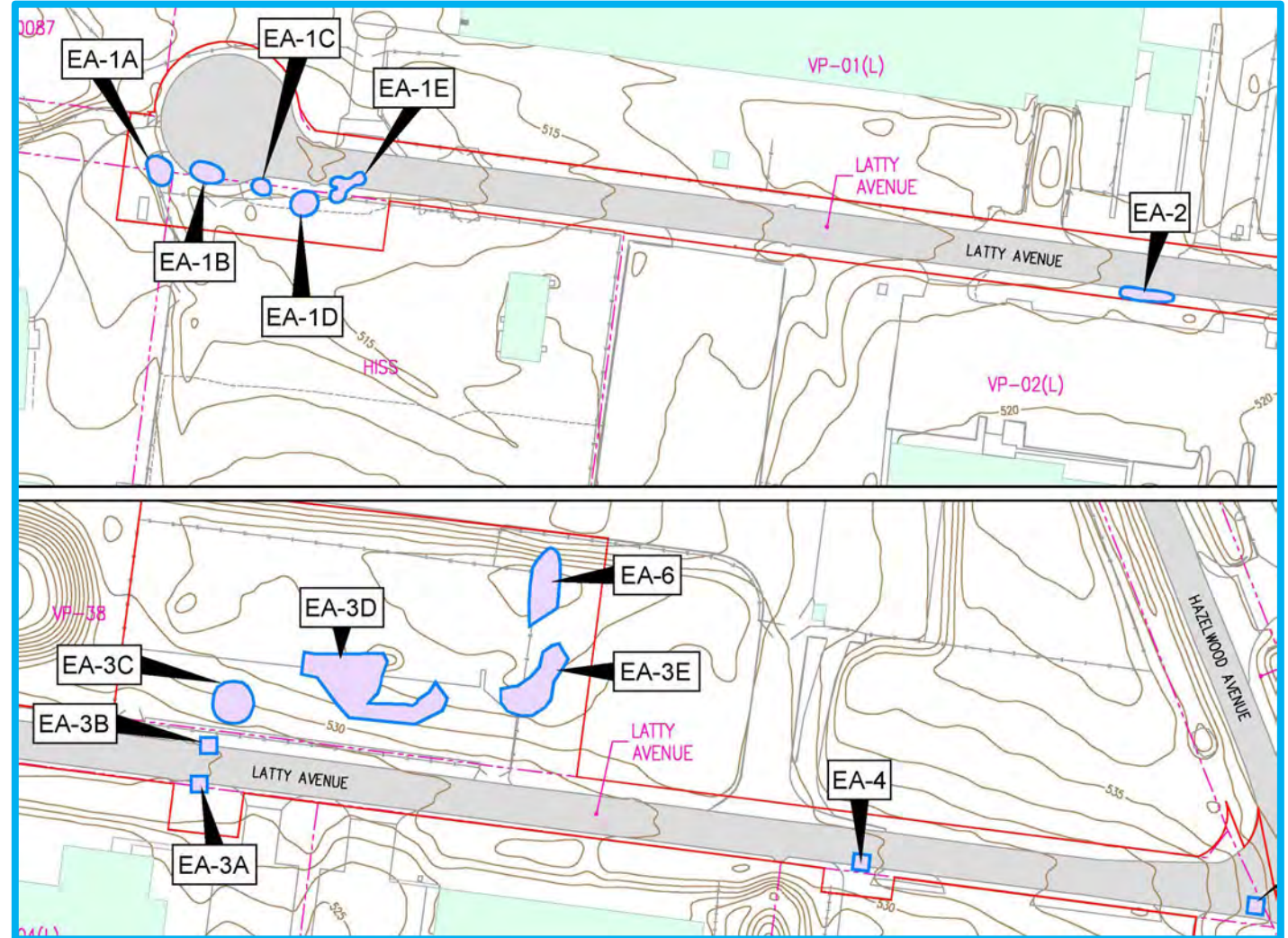


NEXT YEAR WORK

Excavation Near Cades Cove



Latty Avenue Excavation Areas (EA)





U.S. ARMY

COLDWATER CREEK INFORMATIONAL SIGNS

35



- Requesting local governments to allow us to post these signs in parks with public access to CWC

Coldwater Creek Floodplain Investigation

**Formerly Utilized Sites Remedial Action Program
(FUSRAP)**

What is FUSRAP?
The Formerly Utilized Sites Remedial Action Program is an environmental remediation program.

The FUSRAP team devotes itself to finding and remediating radiological contamination generated by activities of the Manhattan Engineer District and the Atomic Energy Commission (MED/AEC) during development of the atomic weapons in the 1940s and 1950s.

- Areas of **low-level** radioactive contamination may exist that do **not** pose a health risk if left **undisturbed**
- Visit the FUSRAP webpage to learn more about site activities in your area
<https://www.mvs.usace.army.mil/Missions/FUSRAP>
- Contact FUSRAP directly if you plan to dig or have questions about property improvements near the creek

Contact Us
General Information
FUSRAP Area Office
314-260-3905
STLFUSRAP@usace.army.mil

Media Inquiries
Public Affairs Office
314-331-8000

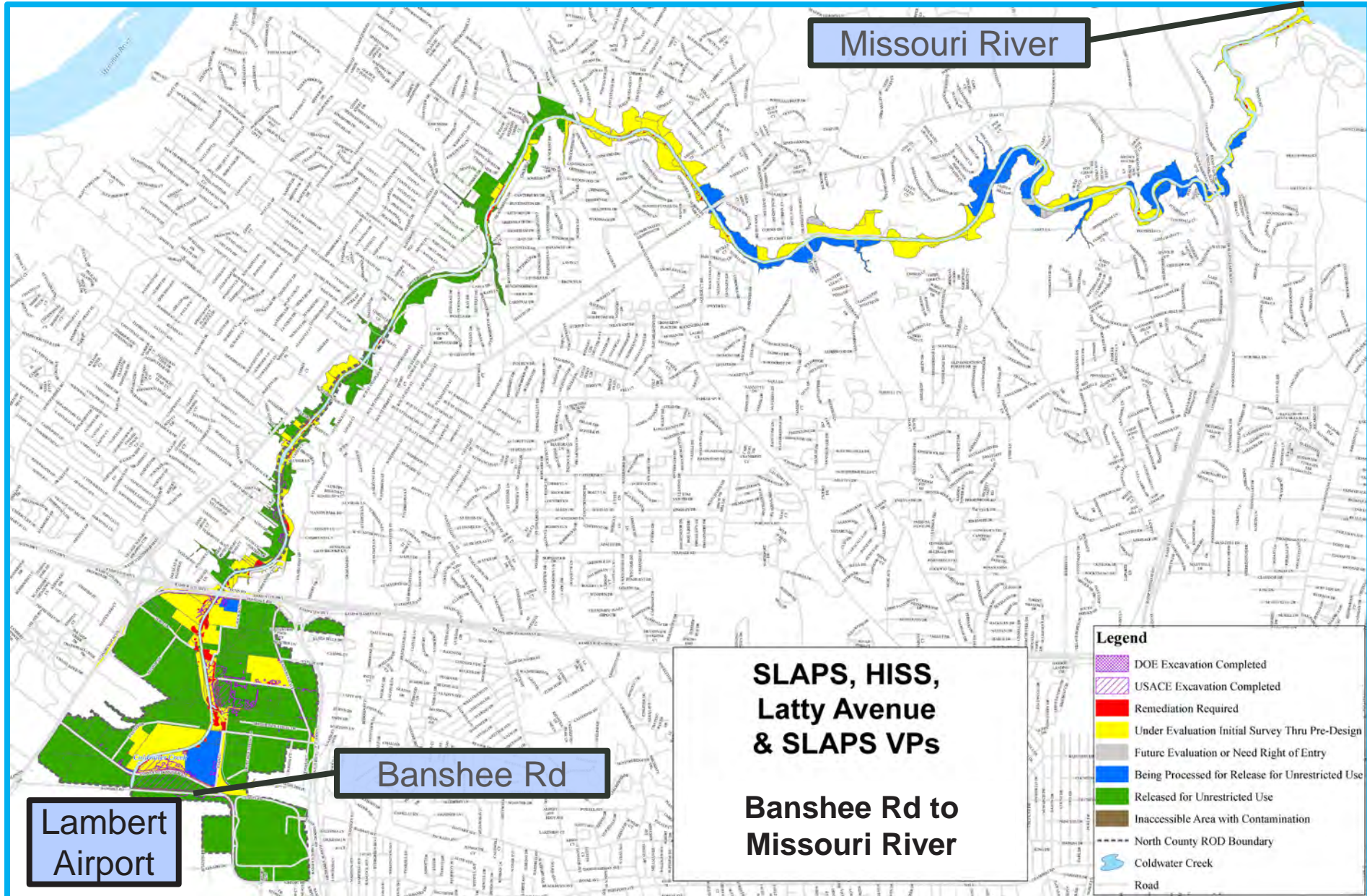
US Army Corps
of Engineers
St. Louis District



U.S. ARMY



NORTH ST. LOUIS COUNTY SITES





U.S. ARMY

QUESTIONS / COMMENTS

- Please provide your comment cards to a USACE representative. They will be read by Mr. Klein and the appropriate subject matter expert(s) will answer them
- We may have duplicate questions / comments
- You may send additional comments / questions to stlfusrap@usace.army.mil



U.S. ARMY

CONTACT US

- **Website**

FUSRAP <https://www.mvs.usace.army.mil/Missions/FUSRAP/>

St. Louis District <https://www.mvs.usace.army.mil/>

- **Email** STLFUSRAP@usace.army.mil

- **General Information**

FUSRAP Office 314-260-3905

Public Affairs Office 314-331-8000

- **Administrative Record**

Electronic Reading Room

<https://www.mvs.usace.army.mil/Missions/FUSRAP/Reading-Room/>

FUSRAP Office, 114 James S. McDonnell Blvd., Hazelwood, MO

Hours: Weekdays from 8 a.m. to 3 p.m. – by appointment