

# FUSRAP

## FORMERLY UTILIZED SITES REMEDIAL ACTION PROGRAM NORTH ST. LOUIS COUNTY SITES

Jo Anne Wade  
FUSRAP North County Project Manager  
USACE, St. Louis District  
June 08, 2023



Elevated areas on creek bank at Jana School property



Sediment sampling in Coldwater Creek



U.S. ARMY



US Army Corps  
of Engineers®





U.S. ARMY

# PURPOSE/AGENDA



## **Purpose:**

*Update the public concerning current progress at Jana Elementary School and the St. Louis Airport Site Vicinity Properties (SLAPS VPs)*

## **Agenda:**

1. Jana Elementary School Updates and Current Activities
2. Coldwater Creek Updates
3. SLAPS VPs Updates
4. Contact Information



Sampling playground at Jana School



U.S. ARMY

# JANA DOCUMENTS

3



## Final Status Survey Evaluations Jana School Structures

Released April 25, 2023

- The 922 radiological survey results, 9 dust/pavement sediment sample results, and the risk and dose assessments for the surfaces of these structures meet the protectiveness RGs and are consistent with background levels.
- These structures meet the criteria for unlimited use and unrestricted exposure. (UUUE)
- [https://www.mvs.usace.army.mil/Portals/54/docs/fusrap/Reports/Jana%20Elementary/Jana\\_School\\_Structures\\_FSSE\\_Rev0\\_04-24-2023.pdf](https://www.mvs.usace.army.mil/Portals/54/docs/fusrap/Reports/Jana%20Elementary/Jana_School_Structures_FSSE_Rev0_04-24-2023.pdf)

---

REVISION 0

**FINAL STATUS SURVEY EVALUATION  
FOR SURFACES OF STRUCTURES  
ASSOCIATED WITH THE  
JANA ELEMENTARY SCHOOL,  
HAZELWOOD SCHOOL DISTRICT**

**ST. LOUIS, MISSOURI**

---

APRIL 24, 2023



U.S. Army Corps of Engineers  
St. Louis District Office  
Formerly Utilized Sites Remedial Action Program



10-50% Recycled Fiber



U.S. ARMY

# JANA DOCUMENTS



## Lead-210 Evaluation for Jana School

Released May 9, 2023

- The concentrations of lead-210 at the HSD-JES are safe, are consistent with natural background conditions, and are not associated with historical MED and AEC activities.
- These conclusions are based on 922 fixed-point structure measurements, 941 structure swipe measurements, 40 analytical results from 9 dust/pavement sediment samples, 1,211 analytical results from 1,211 soil samples, and 4 risk and toxicity health assessments.
- [https://www.mvs.usace.army.mil/Portals/54/docs/fusrap/Reports/Jana%20Elementary/Jana\\_Lead-210\\_Rpt\\_Rev0\\_05-08-2023.pdf](https://www.mvs.usace.army.mil/Portals/54/docs/fusrap/Reports/Jana%20Elementary/Jana_Lead-210_Rpt_Rev0_05-08-2023.pdf)

---

REVISION 0

**EVALUATION OF LEAD-210  
INFORMATION FOR THE  
JANA ELEMENTARY SCHOOL,  
HAZELWOOD SCHOOL DISTRICT**

**ST. LOUIS, MISSOURI**

---

MAY 8, 2023



U.S. Army Corps of Engineers  
St. Louis District Office  
Formerly Utilized Sites Remedial Action Program



10-50% Recycled Fiber



U.S. ARMY

# JANA DOCUMENTS

5



## PDIR/FSSE for Jana School Soils

Released May 30, 2023

- Based on a comparison of the soil sampling analytical results, radiological surveys, and the risk and dose assessment to the remediation goals (RGs) in the Record of Decision for the North St. Louis County Sites (ROD) (USACE 2005a), the soil on CWC-365 and CWC-386 meets the criteria for unlimited use and unrestricted exposure (UUUE).
- The results show that the soil sample data from CWC-365 and CWC-386 are consistent with the reference area background data.
- [https://www.mvs.usace.army.mil/Portals/54/docs/fusrap/Reports/Jana%20Elementary/Jana\\_Soil\\_PDIR-FSSE\\_Rev0\\_05-19-2023.pdf](https://www.mvs.usace.army.mil/Portals/54/docs/fusrap/Reports/Jana%20Elementary/Jana_Soil_PDIR-FSSE_Rev0_05-19-2023.pdf)

---

REVISION 0

**PRE-DESIGN INVESTIGATION  
SUMMARY REPORT AND  
FINAL STATUS SURVEY EVALUATION  
FOR JANA ELEMENTARY SCHOOL  
SOIL: COLDWATER CREEK (CWC)-  
FLOODPLAIN PROPERTIES  
CWC-365 AND CWC-386 (PARTIAL)**

**ST. LOUIS, MISSOURI**

---

MAY 19, 2023



U.S. Army Corps of Engineers  
St. Louis District Office  
Formerly Utilized Sites Remedial Action Program





U.S. ARMY

# CURRENT JANA ACTIVITIES



- Preliminary remedial activities started in May (tree clearing; temporary access road; temporary fence, etc)
- Remedial activities to remove contaminated areas in creek bank will start in June
- USACE placed Door Hangars at residents to inform neighbors of upcoming construction activities at the Jana property
- Ongoing coordination with Hazelwood School District (HSD) representative regarding continued access, remediation and restoration efforts



Clearing trees and building road



Removing trees

U.S. Army Corps of Engineers, St. Louis District



Dear Neighbor,

The U.S. Army Corps of Engineers (USACE) St. Louis District's Formerly Utilized Sites Remedial Action Program (FUSRAP) is beginning remedial activities on the banks of Coldwater Creek adjacent to the Jana Elementary School property (405 Jana Drive Florissant, MO 63031).

FUSRAP activities will begin in early May to support remedial activities in the banks of Coldwater Creek adjacent to Jana Elementary. The USACE contractor will be onsite with heavy equipment from 7am – 5pm, Monday through Thursday. Work will likely continue through the summer and into late fall.

You may notice an increase in traffic and/or noise, but be assured the remedial activities are safe, and do not pose any health concerns or risk of radiation exposure for anyone in the neighborhood.

If you have any questions or concerns, please contact the FUSRAP Citizen Outreach number at 314-260-3905 or by email to [STLFUSRAP@usace.army.mil](mailto:STLFUSRAP@usace.army.mil). Visit the FUSRAP webpage at <https://go.usa.gov/xANRb> or [www.mvs.usace.army.mil/Missions/FUSRAP](http://www.mvs.usace.army.mil/Missions/FUSRAP) to learn more about FUSRAP remediation.

Thank you,

The FUSRAP Team

Door Hangar

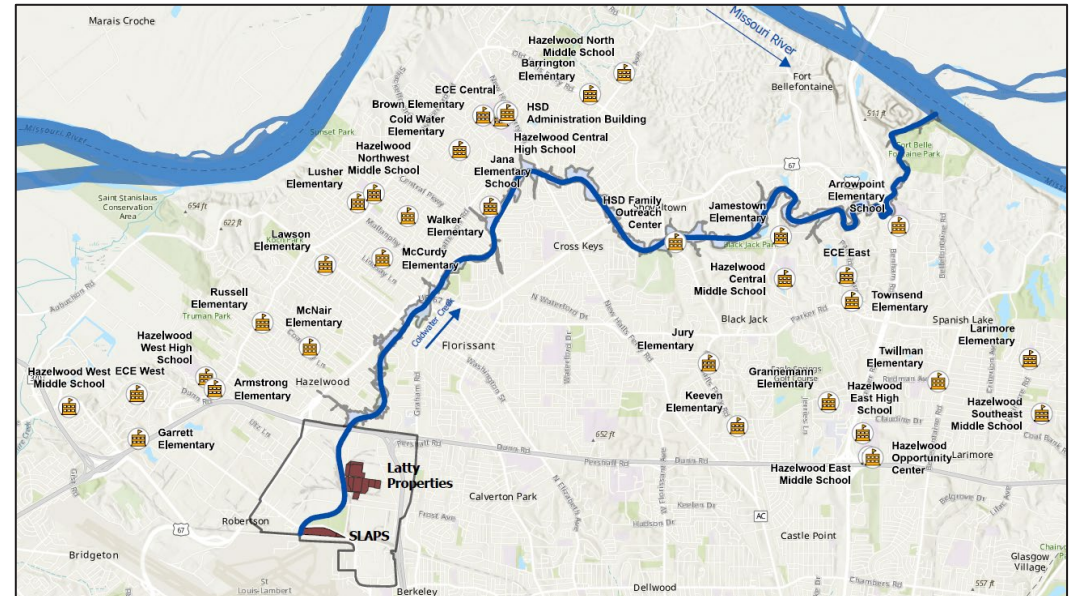


U.S. ARMY

# CURRENT JANA/HAZELWOOD SCHOOL DISTRICT/COLDWATER CREEK ACTIVITIES



- Army Geospatial Center performing independent investigation of soil movement in North STL County
  - Includes collection and review of historical aerial photography, satellite imagery, cartographic, textual records from 1940 through present day
- Preliminary site assessment (abbreviated) at the Hazelwood School District sites to study the historical and current land uses of these properties
  - Includes historical records search to be incorporated into document
- January 2023 - USACE initiated monthly Citizen Outreach Meetings; resume in July 2023









U.S. ARMY

# COLDWATER CREEK

9



- Initiated pre-design investigation sampling to develop remedial work plans
- Remedial activities of areas along CWC will continue after completion of Jana creek bank
- Continue to send status letters to properties owners
- Creek water monitored twice/year at 11 locations
- Monitoring data confirms contamination from FUSRAP activities not impacting creek water or sediment
- Monitoring data can be found in the annual Environmental Monitoring Data Annual Reports (EMDAR) on the FUSRAP website
- <https://www.mvs.usace.army.mil/Missions/FUSRAP/>



Sampling activities at CWC





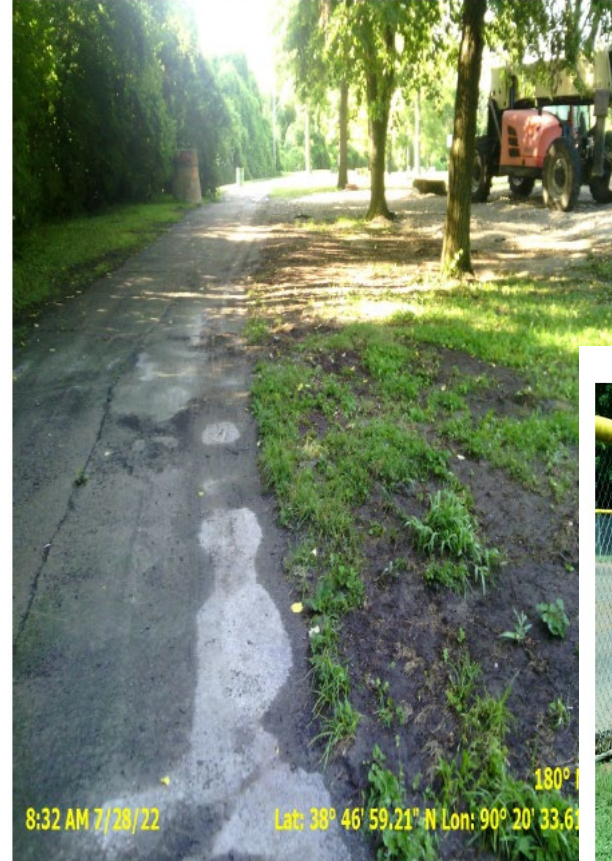
U.S. ARMY

# COLDWATER CREEK SAMPLING POST FLOOD



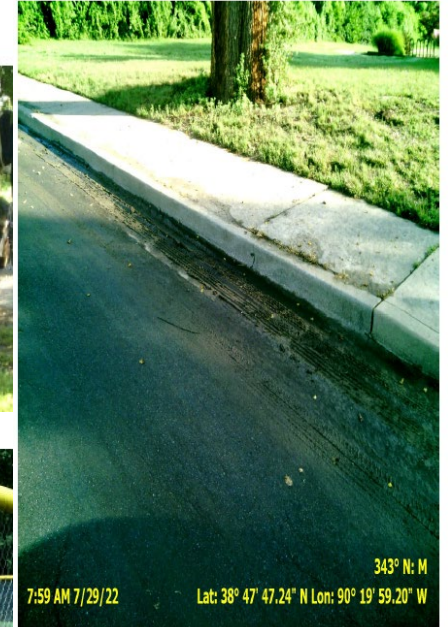
- Following the major flooding event on July 26, 2022, the St. Louis District's FUSRAP performed a thorough data-collection exercise for the entire length of CWC within site boundaries
- More than 280 samples were taken from within the entire length of CWC.
- Sampled surfaces included roads, culverts, playground equipment, bike paths, guardrails, fences, etc.
- The results of the exercise show that no radiological contamination, above the cleanup criteria, was re-deposited in the CWC floodplain by the flood water
- [www.mvs.usace.army.mil/Portals/54/docs/fusra/Reports/CWC\\_Flood\\_Event\\_Report\\_Rev0\\_072622\\_Unzipped.pdf](http://www.mvs.usace.army.mil/Portals/54/docs/fusra/Reports/CWC_Flood_Event_Report_Rev0_072622_Unzipped.pdf)

Coldwater Creek July 26, 2022 Flood Event  
Sample Location Photographs



BA.5 – St. Cin Park (Rear Walking Path-1)

Sampled area at St. Cin Park (top left); Florissant Community Garden (top right); Baseball Fields (bottom right)



BA.15 – Florissant Community Garden (Walkway-1)



BA.12 – St. Ferdinand Park (Baseball Field Smear)



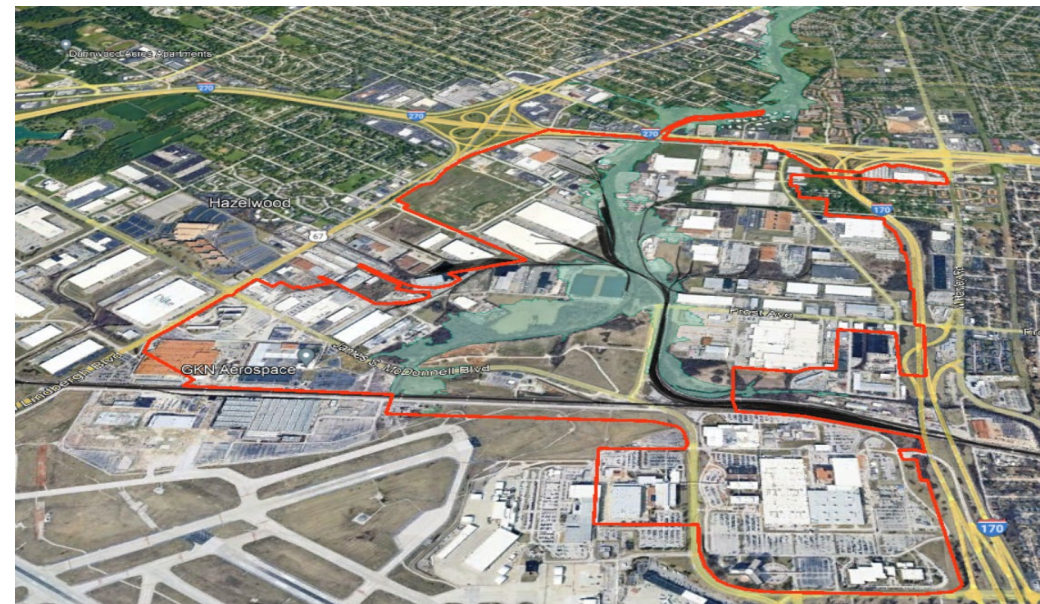
U.S. ARMY

# NORTH ST. LOUIS COUNTY SITES



## ➤ St. Louis Airport Site Vicinity Properties (SLAPS VPs)

- 148+ VPs south of Pershall Road (>1250 acres)
- 608 CWC Properties north of Pershall Road within the 10-year flood to the Missouri River (>750 acres)
- Remedial activities (RA) at former Ballfields – estimated completion Fall 2023
- Working with St. Louis County to remediate under McDonnell Blvd prior to the McDonnell Blvd Bridge replacement over CWC – start October 2023
- Completed RA at VP-56 and Pershall Road
- Continue monthly meetings with Citizen Groups, elected officials, etc. (resume in July)



SLAPS VPs south of Pershall Road



U.S. ARMY

# NORTH ST. LOUIS COUNTY SITES

12



## ➤ St. Louis Airport Site (SLAPS)

- Source Site completed in 2007
- Environmental Monitoring continues



St. Louis Airport Site

## ➤ Latty Avenue Properties

- Hazelwood Interim Storage Site (HISS)/Futura Coatings plus 8 Latty Vicinity Properties
- HISS Piles removed in 2000-2001
- Source Site completed in 2013
- Preparing Close-Out Documents; coordination with Dept. of Energy – Legacy Management to transfer site over by 2026.
- Environmental monitoring continues



2000 Photo of the HISS storage piles and Futura buildings on Latty Avenue



U.S. ARMY

# CONTACT US



➤ **Website**

FUSRAP Website <https://www.mvs.usace.army.mil/Missions/FUSRAP/>

St. Louis District Website <https://www.mvs.usace.army.mil/>

➤ **Email** [STLFUSRAP@usace.army.mil](mailto:STLFUSRAP@usace.army.mil)

➤ **General Information**

FUSRAP Office 314-260-3905

Public Affairs Office 314-331-8000

➤ **Administrative Record**

Documents are available for viewing at:

Electronic Reading Room <https://www.mvs.usace.army.mil/Missions/FUSRAP/Reading-Room/>

FUSRAP Office, 114 James S. McDonnell Blvd., Hazelwood, MO 63042

Hours: Weekdays from 8 a.m. to 3 p.m. – by appointment

St. Louis Public Library, 1301 Olive St., St. Louis, MO 63103

314-241-2288 – Ask for the History Room (by appointment only)