

FUSRAP ST. LOUIS SITES PUBLIC MEETING/OPEN HOUSE APRIL 23, 2025

Phil Moser – Chief, FUSRAP and Environmental Branch
Susan Adams – St. Louis Sites Program Manager
Jo Anne Wade – North STL County Sites Project Manager
Figerald Garcia – STL Downtown Site Project Manager



US Army Corps
of Engineers®

FUSRAP



AGENDA

North St. Louis County Sites

- Status Map: Includes St Louis Airport Site (SLAPS), Latty Avenue Properties, St. Louis Airport Site Vicinity Properties (SLAPS VPs)
- Site Updates
- Inspection Program
- Attention Signs
- Explanation of Significant Differences

Five-Year Review

St. Louis Downtown Sites Updates

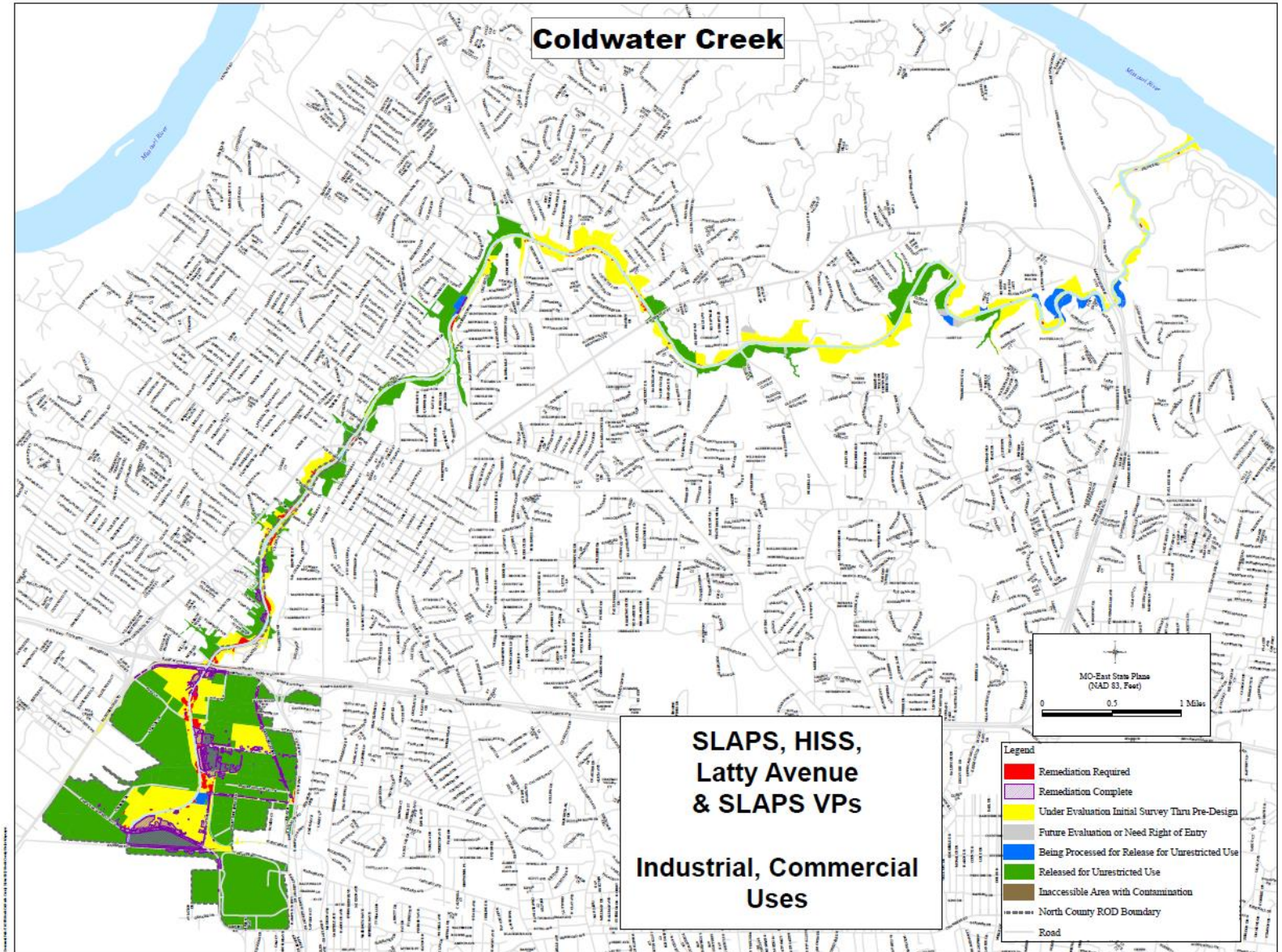
Contact Information

Questions



NORTH ST. LOUIS COUNTY SITES STATUS

- SLAPS – RA completed (622,616 cy removed), environmental monitoring continues
- Latty Ave. Properties – RA completed (226,580 cy removed), environmental monitoring continues, placing land use controls on Futura property (inaccessible contamination under buildings)
- SLAPS VPs – RA continues (290,112 cy removed) along with sampling and environmental monitoring in and around CWC





U.S. ARMY



ST. LOUIS AIRPORT SITE VICINITY PROPERTIES SITE UPDATES

- McDonnell Boulevard Bridge - completed excavation; removed 28,062 cubic yards of contaminated material (338 railcars). St. Louis County Department of Transportation will replace bridge. Anticipated re-opening in August 2025.
- McDonnell Boulevard – completed excavation; removed 31,683 cubic yards of contaminated material (381 railcars); resurfacing will begin in early July 2025.
- Former Ballfields Phase 3 – completed remedial activities; removed 78,937 cubic yards of contaminated material (951 railcars).



Excavation on McDonnell Boulevard



U.S. ARMY

ST. LOUIS AIRPORT SITE VICINITY PROPERTIES

SITE UPDATES

5



- Initiated remedial activities at Latty Avenue and VP-38
- USACE will start remedial activities on CWC floodplain properties CWC-29 through 33, CWC-45 and in CWC. These properties are located south of the St. Cin Park.
- CWC-166, 167, 168, 169, 170, 171 – Continuing conversations with home owners to plan excavation.
- Continue Pre-Design Sampling of CWC to prepare designs to excavate. More than 40,000 soil/sediment samples taken from in and around the creek.
- Installing groundwater wells along CWC to ensure creek is not affected during remedial activities.



Pre-Design Sampling activities (top)
Excavating along Latty Avenue (bottom)





U.S. ARMY

ST. LOUIS AIRPORT SITE VICINITY PROPERTIES INSPECTION PROGRAM

6



- USACE initiated an Inspection Program to meet the interim land use control (LUC) objectives in the *North County Record of Decision* (USACE 2005).
- These quarterly inspections of each CWC property with contamination help to confirm and document that no disturbance of soil or intrusive activities have taken place.
- Unmanned aerial vehicle will be used to inspect areas of contamination within the banks of CWC.
- After the storms on 3/14, USACE technical experts were on the ground assessing the entire length of CWC from the Airport to the Missouri River for any disturbances caused by the storms.
- The USACE team continues communicating directly with individual property owners where storm repairs may need support.



Storm Damage to Properties





U.S. ARMY

ST. LOUIS AIRPORT SITE VICINITY PROPERTIES ATTENTION SIGNS



- As requested by the community, elected officials, and EPA, USACE started placing signs around contaminated areas along CWC in advance of the cleanup efforts to protect public health. 84 signs have been installed on 19 properties to date.
- The first signs were installed December 3, 2024.
- Permission from the property owner is required to place the signs.
- The signs help to prevent soil disturbance as these low-level radioactive materials don't present a risk if the ground isn't disturbed.
- USACE's objective is to raise awareness and keep the community informed of its efforts to ensure transparency.





U.S. ARMY

ST. LOUIS AIRPORT SITE VICINITY PROPERTIES EXPLANATION OF SIGNIFICANT DIFFERENCES (ESD)



1. Soils Beneath Roads, Railroads, and Permanent Structures

- The selected remedy in the ROD for inaccessible soils is institutional controls.
- USACE is modifying the selected remedy to authorize excavation and offsite disposal when conditions warrant.
- If this change is implemented, impacted soils beneath roads, rail lines, and other permanent structures would be evaluated on a case-by-case basis to determine if excavation and offsite disposal was warranted.
- **So what:** allows more excavation of contaminated soils

2. ROD Boundary Extension for Coldwater Creek Floodplain Areas

- USACE is modifying the selected remedy to document changes to the ROD geographical area to include floodplain properties adjacent to Coldwater Creek from Dunn Road to the Missouri River.
- If this change is implemented, the ROD boundary (as indicated in the document) would be expanded by approximately 750 acres and include more than 600 properties adjacent to CWC.
- **So what:** officially documents the CWC properties north of Dunn Rd



U.S. ARMY

ST. LOUIS AIRPORT SITE VICINITY PROPERTIES EXPLANATION OF SIGNIFICANT DIFFERENCES



3. Expansion of the ROD Boundary

- This ESD addresses an expansion of the geographical area of the impacted area to allow for the investigation and remedial action (if necessary) of properties adjacent to areas of potential radiological contamination, creating a geographic and topographic buffer around these areas.
- The extensions to the ROD boundary will accomplish the following objectives:
 - Expand the area of investigation to create a class 3 area around areas of known or potential impact (per *Multi-Agency Radiation Survey and Site Investigation Manual [MARSSIM]* standards),
 - Allow the demonstration that properties with a low probability of containing residual radioactivity meet the ROD RGs which support UUUE,
 - Investigate areas where historic samples indicated contamination outside of the current boundary, and
 - Allow investigations of CWC tributaries, with the initial focus within the 10-year floodplain.
- **So what:** officially documents the areas adjacent to the ROD boundary (as indicated in the document) that require further investigation to complete MARSSIM evaluations



U.S. ARMY

ST. LOUIS AIRPORT SITE VICINITY PROPERTIES FIVE-YEAR REVIEW

10



- The Five-Year Review is required for the St. Louis FUSRAP sites because hazardous substances, pollutants and contaminants remain at the sites above levels that allow for unlimited use/unrestricted exposure.
- The FYR evaluates the protectiveness of each St. Louis FUSRAP Site ROD:
 - the 1998 ROD for St. Louis Downtown Site (SLDS) and
 - the 2005 North St. Louis County Sites ROD (National Priority List site).
- The FYR for the North St. Louis County and St. Louis Downtown Sites is in progress. Completion date in early August 2025.
- USACE received several completed the Interview Forms.
Thank You!



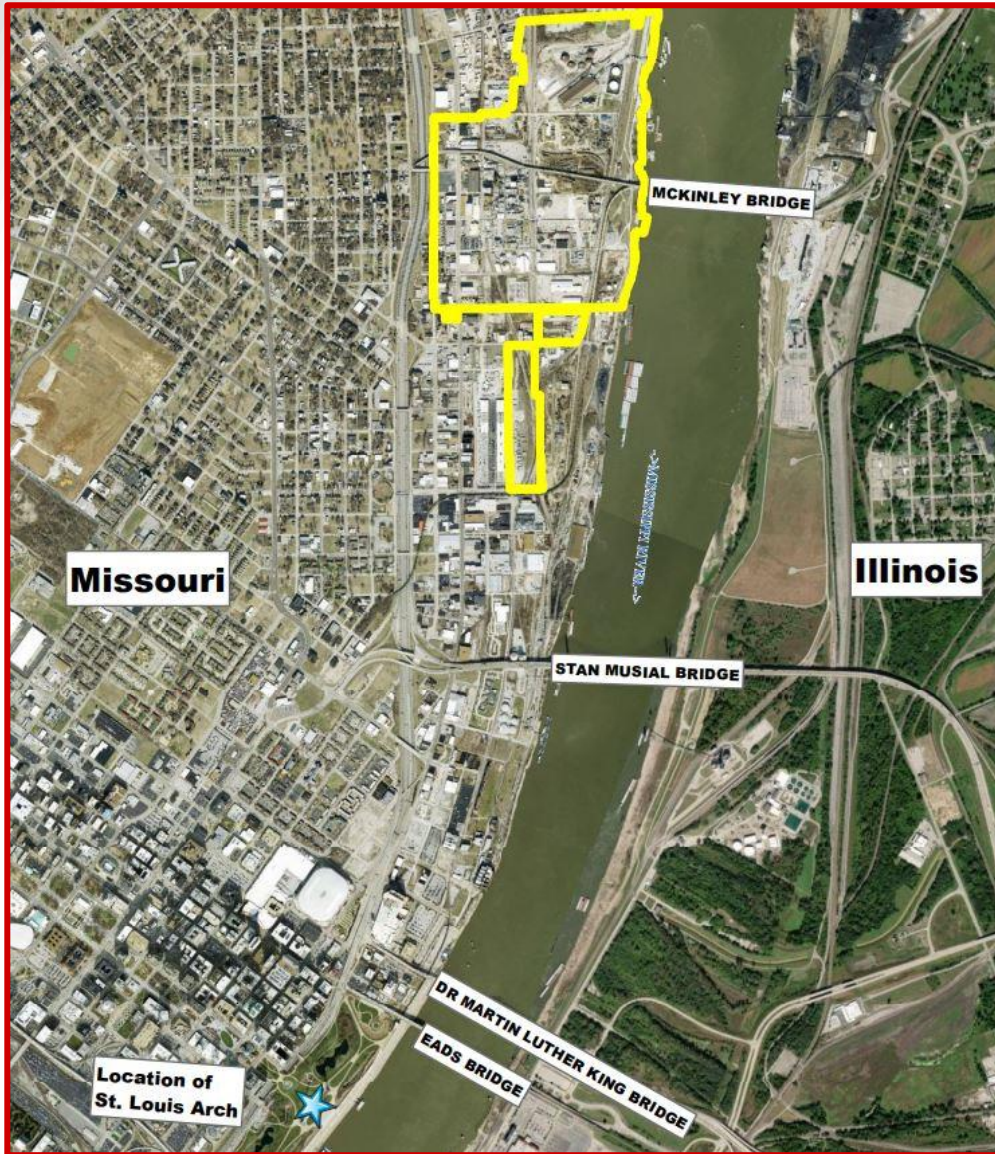
Drilling groundwater wells along
Coldwater Creek



U.S. ARMY

ST. LOUIS DOWNTOWN SITE (SLDS)

11



General Area of
Mallinckrodt
Plants/Property

Adjacent Properties





U.S. ARMY

ST. LOUIS DOWNTOWN SITE (SLDS)

12



Since 1997

- 345,390 cubic yards, that is about 4,161 rail cars
- 53 properties/areas released for unlimited use

This FY (Oct 2024 – Present)

- 1,910 cubic yards (~23 rail cars)
- Currently remediating at:
 - Norfolk Southern Railroad (NSRR)/2nd Street
 - Kiesel property (Next)





U.S. ARMY

ST. LOUIS DOWNTOWN SITE (SLDS)

13



NSRR/2nd Street Remedial Action

- Started last year on 3/18/2024
- Extensive coordination with the property owner (Mallinckrodt company)
- 1,163 CY of contaminated soil shipped to an out of state facility, approximately 14 railcars.
- Projected completion: End of May 2025





U.S. ARMY



CONTACT US

- **Website**

FUSRAP <https://www.mvs.usace.army.mil/Missions/FUSRAP/>

St. Louis District <https://www.mvs.usace.army.mil/>

- **Email** STLFUSRAP@usace.army.mil

- **General Information**

FUSRAP Office 314-260-3905

Public Affairs Office 314-331-8000

- **Administrative Record**

Electronic Reading Room

<https://www.mvs.usace.army.mil/Missions/FUSRAP/Reading-Room/>

FUSRAP Office, 114 James S. McDonnell Blvd., Hazelwood, MO

Hours: Weekdays from 8 a.m. to 3 p.m. – by appointment

Questions/Comments?