

FORMERLY UTILIZED SITES REMEDIAL ACTION PROGRAM

ST. LOUIS SITES STATUS UPDATE

Prepared by Bruce Munholand
For Public Information Meeting
22 February 2018

The logo for the Formerly Utilized Sites Remedial Action Program (FUSRAP). It features the word "FUSRAP" in a bold, red, sans-serif font. The letters are slightly stylized, with the "U" and "S" having a unique shape. The logo is set against a white background.

US Army Corps
of Engineers.



Agenda



- Mission Sites
- FUSRAP Implementation Phase
- FY17 and FY18 Progress
- St. Louis Downtown Site Update
- North St. Louis County Update
- Coldwater Creek & 10-Year Floodplain Sampling Update
- FUSRAP Contact Information
- Missouri Department of Natural Resources Overview



US Army Corps
of Engineers



Mission Sites

North St. Louis County Sites

- St. Louis Airport Site (SLAPS)
- SLAPS Vicinity Properties (SLAPS VPs)
 - Includes **Coldwater Creek – Banshee Road to Missouri River**
- Latty Avenue Properties (Latty)
 - Hazelwood Interim Storage Site / Futura
 - Latty Avenue Vicinity Properties



St. Louis Downtown Site (SLDS)

Iowa Army Ammunition Plant (IAAAP)



US Army Corps
of Engineers

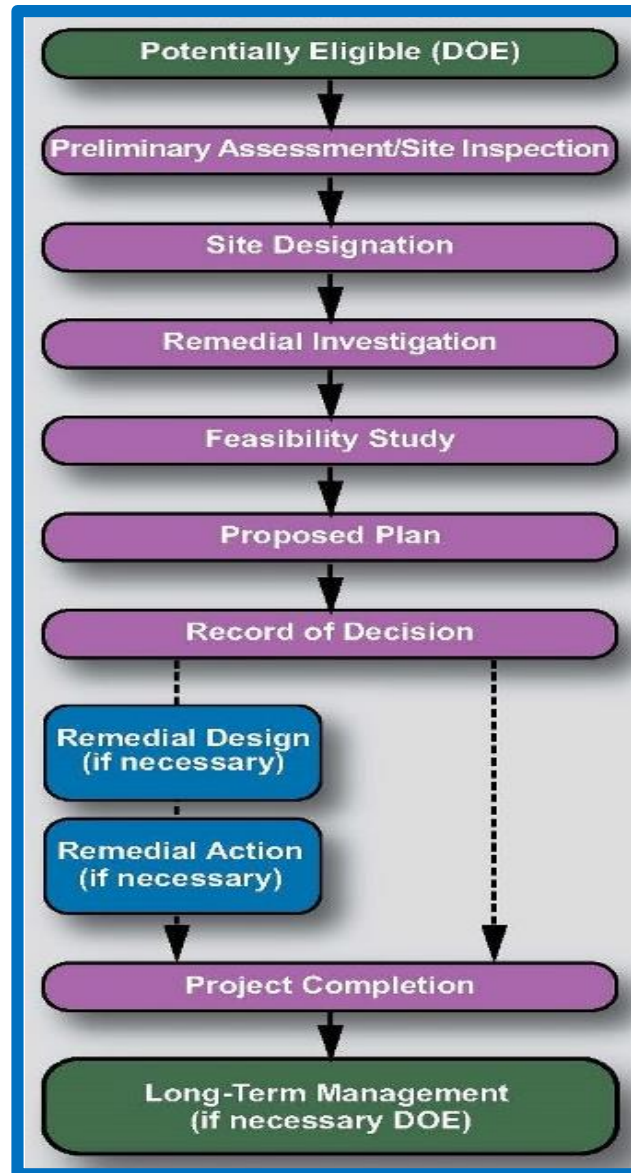


CERCLA Process - FUSRAP Execution

4

DOE

- Identifies Potentially Eligible Sites
- Long-Term Management



Identification Phase

Investigation Phase

Decision
Implementation Phase

Closeout Phase



US Army Corps
of Engineers



Implementation Phase

Pre-Design Investigation

- Information gathering
 - Collect data
 - Conduct interviews
 - Research historical records
- Ground Walkover Survey
 - **Notify property owners**
- Systematic Soil Sampling
 - **Pre-Design Investigation Report (PDIR)**
- Coordinate with EPA and MDNR

Remedial Design

- Engineering approach and procedures to carry out the ROD Remedy
- Remedial Design documents (RD)
 - Coordinate with USEPA and MDNR
 - **Coordinate With property owners**
 - Ensure right of entry is in place

Remedial Action

- Implements Remedial Design for ROD Remedy
- Excavation (Remedy or Component of Remedy)
 - Gross excavation
 - Large volumes to predetermined depth (rapid)
 - Guided excavation
 - “Precision”
 - Isolated remaining hot spots (slow)
- **Post-RA Report**



US Army Corps
of Engineers



Actual Progress - FY17

(October 2016 – September 2017)

North County

• SLAPS	0 CY
• SLAPS VPs (including Coldwater Creek)	10,801 CY
• Latty Avenue Properties	0 CY
SLDS	14,366 CY
IAAAP	576 CY

Total	25,743 CY
--------------	------------------

**25,743 CY ~
310 Railroad Cars**



US Army Corps
of Engineers.



Planned Progress - FY18

(October 2017 – September 2018)

North County

• SLAPS	0 CY
• SLAPS VPs (including Coldwater Creek)	18,000 CY
• Latty Avenue Properties	0 CY
SLDS	10,000 CY
IAAAP	1,550 CY

Total	29,550 CY
--------------	------------------

**7,200 CY
increase for
North County**



US Army Corps
of Engineers.



SLDS Remediation Status

(Since February 2017)

Plant 6WH Former Building 101 Area

- Completed excavation December 2017
- Approximately 60,000 cy removed
- Extensive backfilling ongoing

Destrehan Street

- Approximately 14,000 cy removed since September 2016
- Estimated 16,000 cy total; Complete 2018

Plant 1 Former Building 17 Area

- Approximately 1,800 cy removed since June 2017
- Estimated 2,000 cy total; Complete 2018



**3 properties released for beneficial use in FY17;
3 planned for FY18**

To date, 200 total acres released for beneficial use



US Army Corps
of Engineers



North County Remediation Status

(Since February 2017)

Duchesne Park

- Completed site restoration
- Re-opened the park spring 2017

Palm Drive Properties

- Completed excavation in July 2017
- Completed restoration in October 2017

Chez Paree Apartments (Additional)

- Started excavation late January 2018
- More than 1,200 cy removed
- Estimated 1,400 cy total
- Restoration completion in Spring 2018

“Ballfields” Phase 2B

- More than 6,500 cy removed since returning to the site in August 2017
- Estimated 19,300 cy total; completion in 2019



**23 properties released for
beneficial use in FY17;
40 planned for FY18**

***To date, 882 total acres
released for beneficial use***

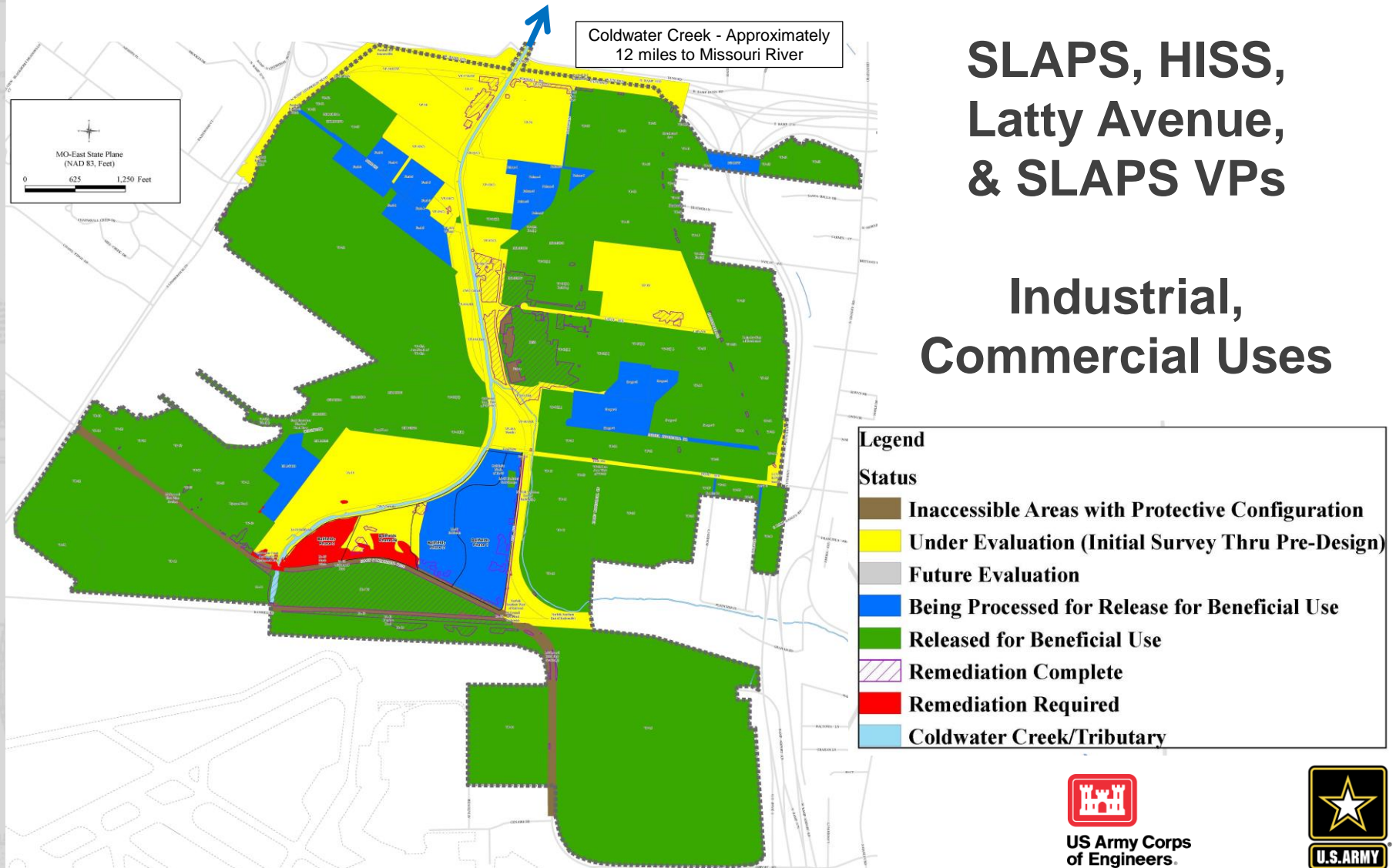


US Army Corps
of Engineers



Coldwater Creek

Banshee Road to I-270



**SLAPS, HISS,
Latty Avenue,
& SLAPS VPs**

**Industrial,
Commercial Uses**



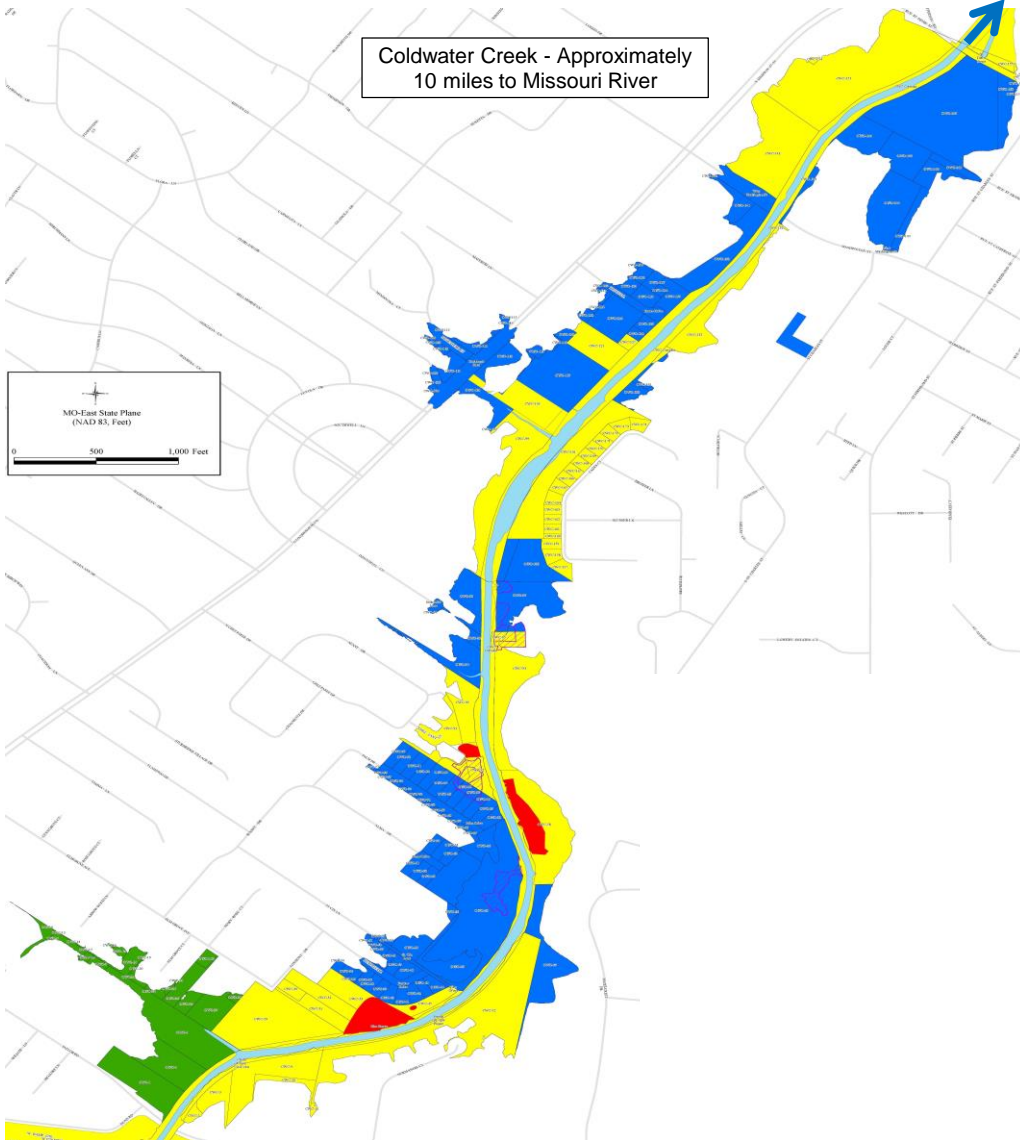
**US Army Corps
of Engineers**



Coldwater Creek

I-270 to St. Denis Bridge

Coldwater Creek - Approximately
10 miles to Missouri River



**SLAPS VPs,
Floodplain**

**Residential,
Recreational, Public,
Commercial Uses**

Legend

Status

- Inaccessible Areas with Protective Configuration
- Under Evaluation (Initial Survey Thru Pre-Design)
- Future Evaluation
- Being Processed for Release for Beneficial Use
- Released for Beneficial Use
- Remediation Complete
- Remediation Required
- Coldwater Creek/Tributary



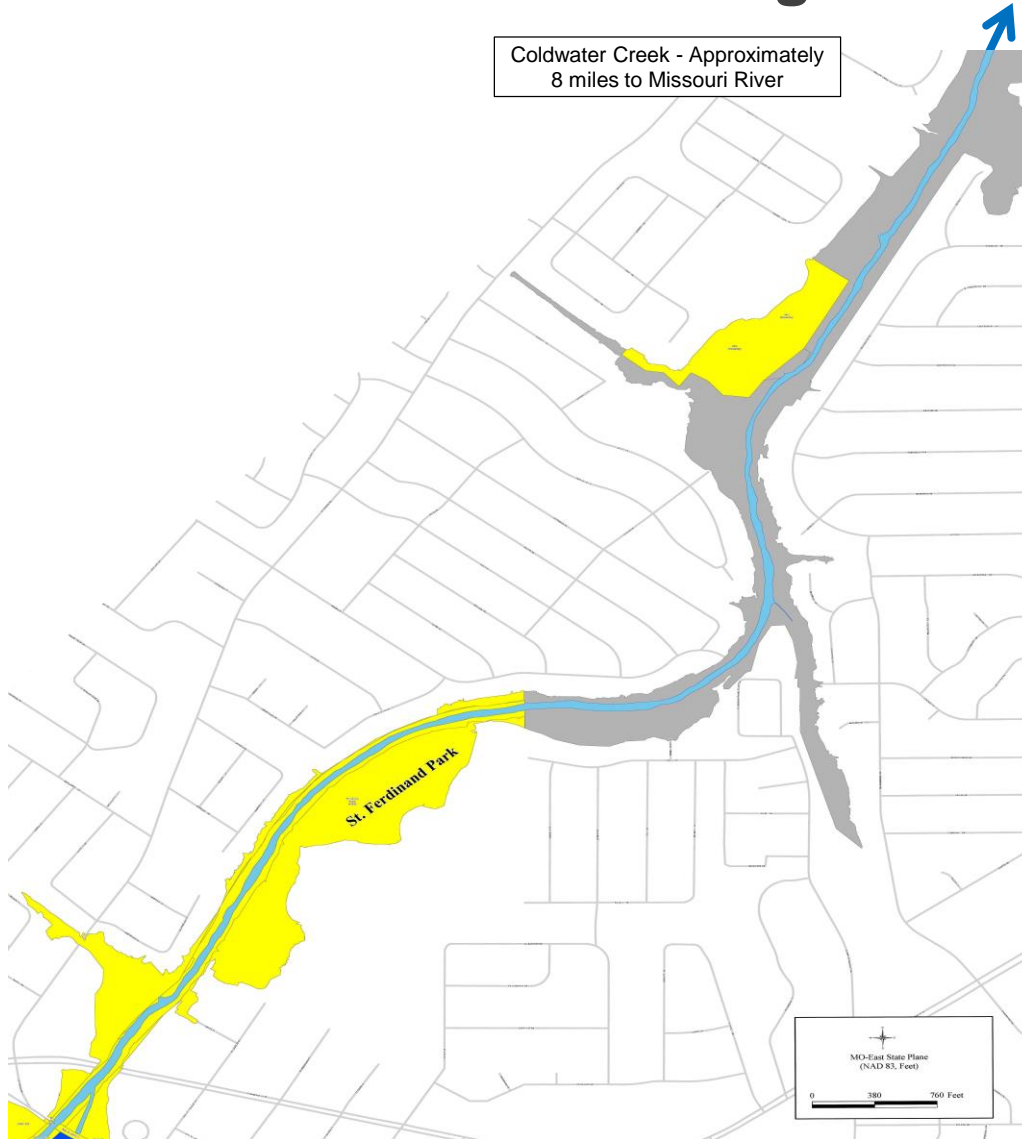
**US Army Corps
of Engineers**



Coldwater Creek

St. Denis Bridge to Cricket Court

Coldwater Creek - Approximately
8 miles to Missouri River



**SLAPS VPs,
Floodplain**

**Residential,
Recreational, Public,
Commercial Uses**

Legend

Status

- Inaccessible Areas with Protective Configuration
- Under Evaluation (Initial Survey Thru Pre-Design)
- Future Evaluation
- Being Processed for Release for Beneficial Use
- Released for Beneficial Use
- Remediation Complete
- Remediation Required
- Coldwater Creek/Tributary



**US Army Corps
of Engineers**



Sampling Coldwater Creek & 10-Year Floodplain

McDonnell Blvd to St. Ferdinand Park (5 miles)

Tens of thousands of samples have been taken to establish remediation requirements

- Approximately 1/3 in Coldwater Creek Corridor (top-of-bank)
- Approximately 2/3 in adjacent property (predominantly 10-year floodplain)
- Hundreds more before definition of first 5-miles is complete

More than
90% of
samples
are below
RG's



Samples
above RG's
are
concentrated
in a few
clusters

St. Ferdinand Park to Missouri River (9 miles)

Very little post-ROD sampling to date



US Army Corps
of Engineers



Sampling Results Key Points

- Sample results are consistent with Conceptual Site Model
 - ★ Confirms our expectations based on engineering expertise (Conceptual Model Fact Sheet)
- Contamination away from source locations is found in localized clusters
 - Not evenly distributed; not widespread
- Sample depths vary from near service to 10 feet in depth depending on sample location, method, and purpose.
- The water in Coldwater Creek is “clean” (remains under *response-action levels* provided in the ROD)



US Army Corps
of Engineers



Coldwater Creek FAQs

Website

- St. Louis District Website <http://www.mvs.usace.army.mil>
 - Click on FUSRAP Quick Link (left side of District page)
 - FUSRAP page will open
 - Click on Coldwater Creek FAQs (upper right corner of FUSRAP page)
- Also on the FUSRAP site:
 - Background (history, laws, regulations, public participation)
 - Sites (about each project, records of decision, documents)
 - Reports
 - Meeting presentations
 - Newsletters
 - Fact sheets
 - Links to other agencies
- ...and more



US Army Corps
of Engineers



Questions and Information

Website

- St. Louis District Website <http://www.mvs.usace.army.mil>
- FUSRAP Website <http://bit.ly/FUSRAPstl>

E-mail

- STLFUSRAP@usace.army.mil

General Information

- FUSRAP Office 314-260-3905
- Public Affairs Office 314-331-8000

Newsletter

- Biannual; sign-up list at USACE tables

Administrative Record

Documents are available for viewing at:

- **FUSRAP Office**, 8945 Latty Ave., Berkeley, MO (314-260-3905)
 - Hours: Weekdays from 8 a.m. to 3 p.m. – by appointment
- **St. Louis Public Library**, 1301 Olive Street, St. Louis, MO (314-241-2288 – by appointment only)



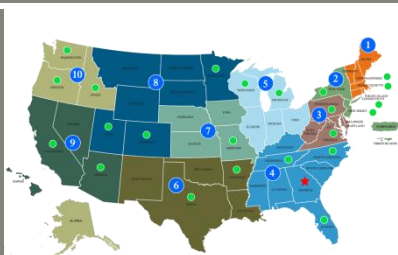
US Army Corps
of Engineers





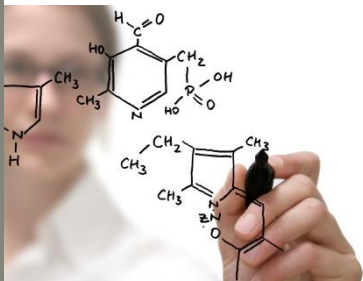
COLDWATER CREEK PUBLIC HEALTH ASSESSMENT

ATSDR RESOURCES: WHERE TO GO FOR MORE INFORMATION



ATSDR's Coldwater Creek Website

https://www.atsdr.cdc.gov/sites/coldwater_creek/index.html



Email ATSDR's Coldwater Creek Site Team

ColdwaterCreek@cdc.gov



ATSDR's Website

<http://www.atsdr.cdc.gov>