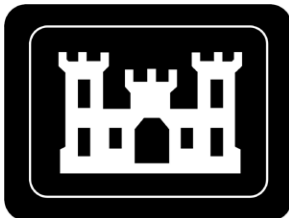

REVISION 0

**IOWA ARMY AMMUNITION PLANT
OPERABLE UNIT 8 ANNUAL
ENVIRONMENTAL MONITORING
DATA AND ANALYSIS REPORT FOR
CALENDAR YEAR 2021**

MIDDLETOWN, IOWA

DECEMBER 16, 2022



**U.S. Army Corps of Engineers
St. Louis District Office
Formerly Utilized Sites Remedial Action Program**



10-50% Recycled Fiber

REVISION 0

**IOWA ARMY AMMUNITION PLANT
OPERABLE UNIT 8 ANNUAL
ENVIRONMENTAL MONITORING
DATA AND ANALYSIS REPORT FOR
CALENDAR YEAR 2021**

MIDDLETOWN, IOWA

DECEMBER 16, 2022

prepared by

U.S. Army Corps of Engineers St. Louis District Office
Formerly Utilized Sites Remedial Action Program

with assistance from

Leidos, Inc.
under Contract No. W912P9-17-D-0014, Delivery Order 0007

TABLE OF CONTENTS

<u>SECTION</u>	<u>PAGE</u>
LIST OF TABLES	ii
LIST OF FIGURES	iii
LIST OF APPENDICIES.....	iii
ACRONYMS AND ABBREVIATIONS.....	iv
UNIT ABBREVIATIONS.....	vi
EXECUTIVE SUMMARY	ES-1
1.0 HISTORICAL SITE BACKGROUND AND CURRENT SITE STATUS	1-1
1.1 INTRODUCTION	1-1
1.2 PURPOSE.....	1-1
1.3 PROGRAM AND SITE HISTORY	1-1
1.4 CALENDAR YEAR 2021 ACTIVITIES.....	1-2
1.4.1 IAAAP Operable Unit 8 Calendar Year 2021 Documents.....	1-2
1.4.2 IAAAP Operable Unit 8 Calendar Year 2021 Remedial Actions.....	1-2
2.0 APPLICABLE OR RELEVANT AND APPROPRIATE REQUIREMENTS EVALUATION	2-1
3.0 EVALUATION OF RADIOLOGICAL AIR MONITORING DATA	3-1
3.1 METHOD	3-1
3.1.1 Emission Rate	3-1
3.1.2 Effective Dose Equivalent	3-1
3.2 METEOROLOGICAL DATA.....	3-1
3.3 IAAAP OPERABLE UNIT 8 SITES UNDER ACTIVE REMEDIATION	3-2
3.3.1 Material Handling and Processing for Calendar Year 2021	3-2
3.3.2 Source Description – Radionuclide Soil Concentrations.....	3-2
3.3.3 List of Assumed Air Releases for Calendar Year 2021	3-2
3.3.4 Distances to Receptors.....	3-3
3.4 EMISSIONS DETERMINATION	3-3
3.4.1 Measured Airborne Radioactive Particulate Emissions.....	3-3
3.4.2 IAAAP Operable Unit 8 Total Airborne Radioactive Particulate Emission Rates.....	3-4
3.4.3 CAP88-PC Results.....	3-5
4.0 SURFACE WATER, SEDIMENT, AND STORMWATER MONITORING	4-1
4.1 SURFACE WATER AND SEDIMENT MONITORING.....	4-1
4.2 SURFACE WATER MONITORING RESULTS	4-1
4.3 SEDIMENT MONITORING RESULTS	4-3
4.4 STORMWATER MONITORING.....	4-5

TABLE OF CONTENTS (Continued)

<u>SECTION</u>	<u>PAGE</u>
4.5 CONCLUSION.....	4-5
5.0 ENVIRONMENTAL QUALITY ASSURANCE PROGRAM.....	5-1
5.1 PROGRAM OVERVIEW	5-1
5.2 QUALITY ASSURANCE PROJECT PLAN.....	5-1
5.3 FIELD SAMPLE COLLECTION AND MEASUREMENT	5-1
5.4 PERFORMANCE AND SYSTEM AUDITS.....	5-2
5.4.1 Field Assessments.....	5-2
5.4.2 Project Laboratory Audits.....	5-2
5.5 SUBCONTRACTED LABORATORY PROGRAMS.....	5-3
5.6 QUALITY ASSURANCE AND QUALITY CONTROL SAMPLES.....	5-3
5.6.1 Duplicate Samples	5-3
5.6.2 Split Samples	5-4
5.6.3 Equipment Rinsate Blanks.....	5-4
5.7 DATA REVIEW, EVALUATION, AND VALIDATION	5-5
5.8 PRECISION, ACCURACY, REPRESENTATIVENESS, COMPARABILITY, COMPLETENESS, AND SENSITIVITY.....	5-5
5.9 DATA QUALITY ASSESSMENT SUMMARY	5-7
5.10 RESULTS FOR PARENT SAMPLES AND THE ASSOCIATED DUPLICATE AND SPLIT SAMPLES	5-7
6.0 REFERENCES.....	6-1

LIST OF TABLES

<u>NUMBER</u>	<u>PAGE</u>
Table 3-1. Quad City International Airport Wind Rose Frequency	3-2
Table 3-2. IAAAP Operable Unit 8 Receptors for CY 2021	3-3
Table 3-3. IAAAP Operable Unit 8 Average Gross Alpha Airborne Particulate Emissions for CY 2021	3-3
Table 3-4. IAAAP Operable Unit 8 Excavation Effective Surface Areas and Effective Diameters for CY 2021	3-4
Table 3-5. IAAAP Operable Unit 8 Areas Release Flow Rate for CY 2021	3-4
Table 3-6. IAAAP Operable Unit 8 Airborne Radioactive Particulate Emission Rates Based on Perimeter Air Particulate Samples for CY 2021	3-5
Table 3-7. IAAAP Operable Unit 8 CAP88-PC Results for Receptors for CY 2021	3-5
Table 4-1. Radiological Results for CY 2021 Surface Water Monitoring.....	4-1
Table 4-2. Comparison of Historical Radiological Surface Water Results.....	4-2
Table 4-3. Radiological Results for CY 2021 Sediment Monitoring.....	4-3
Table 4-4. Comparison of Historical Radiological Sediment Results.....	4-4

LIST OF TABLES (Continued)

<u>NUMBER</u>		<u>PAGE</u>
Table 5-1.	Radiological Duplicate Sample Alpha Analysis for CY 2021 – Surface Water.....	5-4
Table 5-2.	Radiological Duplicate Sample Alpha Analysis for CY 2021 – Sediment	5-4
Table 5-3.	Radiological Split Sample Alpha Analysis for CY 2021 – Surface Water.....	5-4
Table 5-4.	Radiological Split Sample Alpha Analysis for CY 2021 – Sediment	5-4
Table 5-5.	Radiological Parent Samples and Associated Duplicate and Split Samples for CY 2021 – Surface Water	5-7
Table 5-6.	Radiological Parent Samples and Associated Duplicate and Split Samples for CY 2021 – Sediment	5-8

LIST OF FIGURES

Figure 1-1.	FUSRAP Areas at IAAAP
Figure 3-1.	IAAAP Firing Sites Area Receptors
Figure 4-1.	Surface Water and Sediment Monitoring Locations

LIST OF APPENDICIES

Appendix A	Calculated Emission Rates from IAAAP Operable Unit 8 Areas
Appendix B	Calendar Year 2021 Air Monitoring Data
Appendix C	CAP88-PC Output Report for IAAAP Operable Unit 8 Areas
Appendix D	Calendar Year 2021 Surface Water and Sediment Data

ACRONYMS AND ABBREVIATIONS

AEC	U.S. Atomic Energy Commission
ARAR	applicable or relevant and appropriate requirement
CERCLA	Comprehensive Environmental Response, Compensation, and Liability Act
<i>CFR</i>	<i>Code of Federal Regulations</i>
COC	contaminant of concern
CY	calendar year
DOD	U.S. Department of Defense
DOE	U.S. Department of Energy
DQO	data quality objective
DU	depleted uranium
EDE	effective dose equivalent
ELAP	Environmental Laboratory Accreditation Program
EM	Engineer Manual
EMDAR	Environmental Monitoring Data and Analysis Report
ER	Engineer Regulation
FS	firing site
FSA	Firing Sites Area
FSS	final status survey
FUSRAP	Formerly Utilized Sites Remedial Action Program
GIS	geographic information system
IAAAP	Iowa Army Ammunition Plant
IDA	Inert Disposal Area
LAP	load, assemble, and pack
MARSSIM	<i>Multi-Agency Radiation Survey and Site Investigation Manual</i>
MDA	minimum detectable activity
MDC	minimum detectable concentration
MED	Manhattan Engineer District
NAD	normalized absolute difference
NRC	U.S. Nuclear Regulatory Commission
OU	operable unit
PDI	pre-design investigation
QA	quality assurance
QAPP	quality assurance project plan
QC	quality control
QSM	<i>Department of Defense (DoD)/Department of Energy (DOE) Consolidated Quality Systems Manual (QSM) for Environmental Laboratories</i>
RA	remedial action
RCA	Radiation Control Area
RG	remediation goal
RI WP	<i>Remedial Investigation Work Plan for Line 1, Firing Sites Area, Yards C, G, and L, Warehouse 3-01 and the West Burn Pads Area South of the Road</i>
Rn	radon
ROD	<i>FUSRAP Record of Decision for the Iowa Army Ammunition Plant</i>
RPD	relative percent difference

ACRONYMS AND ABBREVIATIONS (Continued)

RUSU	reuse soil survey unit
S3	Soil Sorting System Area
SOP	standard operating procedure
SU	survey unit
SW-846	<i>Test Methods for Evaluating Solid Waste, Physical/Chemical Methods</i>
TEDE	total effective dose equivalent
U	uranium
USACE	U.S. Army Corps of Engineers
USEPA	U.S. Environmental Protection Agency
VQ	validation qualifier

UNIT ABBREVIATIONS

Both English and metric units are used in this report. The units used in a specific situation are based on common unit usage or regulatory language (e.g., depths are given in feet, and areas are given in square meters). Units included in the following list are not defined at first use in this report.

°C	degrees Celsius (centigrade)
μCi/cm ³	microcurie(s) per cubic centimeter
μCi/mL	microcurie(s) per milliliter
Ci	curie(s)
cm	centimeter(s)
cm ³	cubic centimeter(s)
m	meter(s)
m ²	square meter(s)
m ³	cubic meter(s)
mL	milliliter(s)
mrem	millirem
pCi/g	picocurie(s) per gram
pCi/L	picocurie(s) per liter

EXECUTIVE SUMMARY

This annual Environmental Monitoring Data and Analysis Report (EMDAR) for calendar year (CY) 2021 applies to the Iowa Army Ammunition Plant (IAAAP) Operable Unit (OU)-8 (Figure 1-1), which is within the scope of the Formerly Utilized Sites Remedial Action Program (FUSRAP). This EMDAR provides an evaluation of the data collected as part of the environmental monitoring conducted for IAAAP OU-8. IAAAP OU-8 consists of the Firing Sites Area (FSA), which contains five subareas named for the buildings located within them, grouped by proximity: Firing Site (FS)-1 and FS-2 Area (FS-1 and FS-2); FS-3, FS-4, and FS-5 Area (FS-3, FS-4, and FS-5); FS-6 Area (FS-6, FS-7, FS-8, and FS-15); FS-12 Area (FS-9, FS-10, FS-11, and FS-12); and FS-14 Area (FS-14); Line 1 Structures; Yards C, G, and L; and Warehouse 3-01. M-Yard is not included as part of OU-8 in the *FUSRAP Record of Decision for the Iowa Army Ammunition Plant* (ROD) (USACE 2011); however, references to OU-8 include M-Yard for the purposes of this EMDAR. Environmental monitoring of various media at IAAAP OU-8 is required under the Comprehensive Environmental Response, Compensation, and Liability Act (CERCLA) and under the commitments in the ROD (USACE 2011).

The U.S. Army Corps of Engineers (USACE) St. Louis District collects environmental monitoring data as a component of the remedial action (RA). RA activities conducted included removal of radiologically contaminated soil at the FSA, physical treatment (soil sorting) to reduce the volume of soil requiring off-site disposal, and waste management. The environmental monitoring data collected during RA serve as a critical component in the evaluation of the current status and potential future migration of residual contaminants.

In addition to environmental monitoring purposes, radiological air data were also used as inputs to calculate the total effective dose equivalent (TEDE) to the hypothetical maximally exposed individual from IAAAP OU-8. The TEDE calculated for the hypothetical maximally exposed individual at IAAAP OU-8 for CY 2021 was less than 0.1 mrem per year. The results of the radiological air monitoring conducted at IAAAP OU-8 demonstrate compliance with the applicable or relevant and appropriate requirements (ARARs) for IAAAP OU-8.

Surface water and sediment sampling were completed as best management practices in April and November of CY 2021. Samples were collected from 10 surface water and sediment sampling locations to evaluate the radiological conditions of the branches of Long Creek running to the east and south of the FS-12 Area and Long Creek downgradient of the FS-12 Area. The results of the surface water and sediment sampling demonstrate no adverse impacts from the remedial activities at the FS-12 Area. No stormwater monitoring samples were collected in CY 2021.

THIS PAGE INTENTIONALLY LEFT BLANK

1.0 HISTORICAL SITE BACKGROUND AND CURRENT SITE STATUS

1.1 INTRODUCTION

This annual Environmental Monitoring Data and Analysis Report (EMDAR) for calendar year (CY) 2021 applies to the Iowa Army Ammunition Plant (IAAAP) Operable Unit (OU)-8, which is within the scope of the Formerly Utilized Sites Remedial Action Program (FUSRAP). This EMDAR provides an evaluation of the data collected as part of the environmental monitoring conducted for IAAAP OU-8. IAAAP OU-8 includes the Firing Sites Area (FSA), which consists of five subareas named for the buildings located within them, grouped for proximity: Firing Site (FS)-1 and FS-2 Area (FS-1 and FS-2); FS-3, FS-4, and FS-5 Area (FS-3, FS-4, and FS-5); FS-6 Area (FS-6, FS-7, FS-8, and FS-15); FS-12 Area (FS-9, FS-10, FS-11, and FS-12); and FS-14 Area (FS-14); Line 1 Structures; Yards C, G, and L; and Warehouse 3-01 (Figure 1-1). M-Yard is not included as part of OU-8 in *FUSRAP Record of Decision for the Iowa Army Ammunition Plant* (ROD) (USACE 2011); however, references to OU-8 include M-Yard for the purposes of this EMDAR. Environmental monitoring of various media at IAAAP OU-8 is required under the Comprehensive Environmental Response, Compensation, and Liability Act (CERCLA) and under the commitments in the ROD (USACE 2011).

1.2 PURPOSE

The primary purpose of this EMDAR is to report the calculated total effective dose equivalent (TEDE) to the hypothetical maximally exposed individual and other receptors from radionuclide emissions (exclusive of radon) from IAAAP OU-8, where a reasonable potential for radionuclide emissions due to FUSRAP activities exists. The results of these calculations demonstrate compliance with the applicable or relevant and appropriate requirements (ARARs) or other federal and state benchmarks. During CY 2021, the FS-12 Area and the waste loadout area at M-Yard had a reasonable potential for radionuclide emissions due to FUSRAP activities. The air emissions from the FS-12 Area and M-Yard are releases of particulate radionuclides in soil as a result of windblown action and remedial action (RA) in the form of excavation, on-site treatment (i.e., soil sorting), stockpiling, and loadout of soil.

This EMDAR additionally serves to enhance the reader's awareness of the current condition of IAAAP OU-8; summarize the data collection efforts for CY 2021, including surface water and sediment sampling; and provide analysis of the CY 2021 environmental monitoring data results. This EMDAR presents the following information:

- IAAAP OU-8 sample collection data and interpretation of CY 2021 results; and
- The status of IAAAP OU-8 regarding compliance with the ARARs or other federal and state benchmarks.

1.3 PROGRAM AND SITE HISTORY

FUSRAP was executed by the U.S. Atomic Energy Commission (AEC) in 1974 to identify, remediate, or otherwise control sites at which residual radioactivity remained from operations conducted for the Manhattan Engineer District (MED). FUSRAP was continued by the successor agencies to AEC until 1997, when the U.S. Congress transferred responsibility for the execution aspect of FUSRAP from the U.S. Department of Energy (DOE) to the U.S. Army Corps of Engineers (USACE).

IAAAP is a government-owned, contractor-operated facility that occupies approximately 76,890,000 m² (19,000 acres) in Des Moines County near Middletown, Iowa, approximately 10 miles west of the Mississippi River (Figure 1-1). Historically, the installation's mission was to load, assemble, and pack (LAP) ammunition items, including projectiles, mortar rounds, warheads, demolition charges, and munitions components such as fuses, primers, and boosters.

All IAAAP land is currently owned by and under the control of the U.S. Army. Approximately one-third of IAAAP property is occupied by active or formerly active munitions production or storage facilities. The remaining property is generally either forested (30,350,000 m² [7,500 acres]) or leased for agricultural use (31,160,000 m² [7,700 acres]).

Since operations began in 1941, IAAAP has used explosives and lead-based initiating compounds to produce a wide variety of ordnance items. During the summer of 1947, Mason & Hanger–Silas Mason Company, Inc., the operating contractor, entered into a contract with the Ordnance Department to assist in the design and engineering, to perform the construction, and to operate a facility for the purpose of supplying AEC with explosive components for nuclear weapons. From 1947 to 1975, IAAAP OU-8 areas were under the control of AEC or its successors for weapon assembly operations. Based on IAAAP project history reports, the first nuclear weapon assembly operations are believed to have begun in 1949. Throughout the remaining years of AEC control, IAAAP tested, assembled, conducted surveillance on, and disassembled a wide variety of nuclear weapons. Detailed descriptions and histories of IAAAP OU-8 areas are contained in the *Iowa Army Ammunition Plant FUSRAP Remedial Investigation Report for Firing Sites Area, Yards C, E, F, G, and L, Warehouse 3-01 and Area West of Line 5B* (USACE 2008) and the ROD (USACE 2011).

1.4 CALENDAR YEAR 2021 ACTIVITIES

1.4.1 IAAAP Operable Unit 8 Calendar Year 2021 Documents

During CY 2021, the following OU-8 documents were finalized:

- *Iowa Army Ammunition Plant Operable Unit 8 Annual Environmental Monitoring Data and Analysis Report for Calendar Year 2020* (USACE 2021a),
- *Post-Remedial Action Report and Final Status Survey Evaluation for the Firing Site 12 Area East Survey Units at the Iowa Army Ammunition Plant* (USACE 2021b),
- *Area E Pre-Design Investigation Report for the Iowa Army Ammunition Plant Operable Unit 8* (R8I Cabrera Remediation & Construction, LLC 2021a),
- *Area E Remedial Design/Remedial Action Work Plan Iowa Army Ammunition Plant Operable Unit 8* (R8I Cabrera Remediation & Construction, LLC 2021b), and
- *Interim Change to the Final Status Survey Plan for the FUSRAP Areas at the Iowa Army Ammunition Plant*, Final, dated February 2013 (USACE 2021c).

1.4.2 IAAAP Operable Unit 8 Calendar Year 2021 Remedial Actions

During CY 2021, RA was performed at the FS-12 Area. RA began at the FS-12 Area in the first quarter and continued through the fourth quarter. A total of 27,256 tons (27,175 tons of soil and 81 tons of woodchips) were processed by radiological soil sorting, with approximately 2,373 tons diverted as contaminated material for off-site disposal. Other waste material, including oversized material discharged from the screen plant, and debris and rocks from the excavation area were not

processed through the soil sorting system but were stockpiled and then directly loaded into the railcars for shipment and off-site disposal.

In 2021, six transportation & disposal campaigns were conducted, with a total of 45 rail cars loaded with 4,434 tons of waste shipped to US Ecology in Grand View, Idaho. All wastes were disposed of in accordance with applicable permits and procedures by US Ecology.

During CY 2021, *Multi-Agency Radiation Survey and Site Investigation Manual* (MARSSIM) (DOD 2000) Class 1 verifications were completed at FS-12 Area (survey unit [SU]-3, SU-4, SU-6, SU-23, SU-24, SU-26, SU-29, SU-30, SU-31, SU-33, SU-38, SU-39, SU-43, SU-44, SU-45, SU-46, SU-49, SU-50, SU-51, SU-57, SU-119, SU-120, SU-121, SU-122, SU-123, and SU-124. Class 2 final status surveys (FSSs) were also completed at FS-12 Area (C2-SU-2 and C2-SU-3). All areas that were remediated were classified as Class 1 SUs and all non-remediated areas were classified as Class 2 SUs. Verifications/FSSs at FS-12 Area were performed to confirm that the ROD soil remediation goal (RG) was achieved.

During CY 2021, MARSSIM Class 2 FSSs were completed for reuse soil resulting from physical treatment of excavated soil from FS-12 Area (reuse soil survey unit [RUSU]-199 through RUSU-254).

During CY 2021, characterizations/pre-design investigations (PDIs) were performed at FS-6 Area.

THIS PAGE INTENTIONALLY LEFT BLANK

2.0 APPLICABLE OR RELEVANT AND APPROPRIATE REQUIREMENTS EVALUATION

Section 2.8.2 of the ROD lists two ARARs that are evaluated in this EMDAR. The first ARAR, from 10 *Code of Federal Regulations (CFR)* 20.1403(b), requires that the TEDE from residual radioactivity distinguishable from background to the average member of the critical group not exceed 25 mrem per year. The second ARAR, from 10 *CFR* 20.1101(d), requires that emissions of radioactive material to the environment, excluding radon (Rn)-222 and its progeny, be maintained so the highest individual dose to the public does not exceed 10 mrem per year. For the purposes of the CY 2021 evaluation, the critical group is a current IAAAP employee not engaged in FUSRAP RA (i.e., an employee working at the Inert Disposal Area [IDA], located approximately 613 m east of the FS-12 Area, and an employee working at the FS-1 and FS-2 Area, located approximately 521 m northwest of M-Yard).

The evaluation for compliance with the 10 *CFR* 20.1101(d) ARAR is accomplished using the U.S. Environmental Protection Agency (USEPA) computer code CAP88-PC, Version 4.1 (USEPA 2020) to determine dose from radioactive airborne emissions to members of the public located at specific distances and directions from the site. The evaluation for compliance with the 10 *CFR* 20.1403(b) ARAR is accomplished by calculating the total dose from contaminant exposures, resulting from soil excavation, soil sorting, stockpiling, and loadout activities at the FS-12 Area and M-Yard, to the closest onsite worker at the IDA and at the FS-1 and FS-2 Area, respectively, via the most significant migration pathway, which is airborne emissions. Consequently, both ARARs were evaluated against only the total dose from airborne emissions and all of the radiological exposure routes (i.e., ingestion, inhalation, air immersion, ground surface, internal and external radiation) associated with airborne emissions. Additionally, compliance with 10 *CFR* 20.1101(d) will automatically ensure compliance with 10 *CFR* 20.1403(b), because both are dose-based limits of 10 mrem per year and 25 mrem per year, respectively, to the same receptor.

Exposures to potential trespassers and recreational users (e.g., hunters) are considered infrequent and insignificant because of access restrictions to IAAAP property, as well as the physical characteristics of each area.

Although not required to be followed, 40 *CFR* 61, Appendix E (the USEPA's equivalent regulation to 10 *CFR* 20.1101(d)), provides a procedure to determine compliance with radioactive airborne emissions. This procedure was followed to calculate dose to the potential receptors (e.g., residential, farm, business, and school receptors), and is described in the subsequent sections.

THIS PAGE INTENTIONALLY LEFT BLANK

3.0 EVALUATION OF RADIOLOGICAL AIR MONITORING DATA

3.1 METHOD

Emission rates for IAAAP OU-8 were modeled using guidance documents referenced in 40 *CFR* 61, Appendix E, *Compliance Procedures Methods for Determining Compliance with Subpart I* (USEPA 1989), and were measured by collection of environmental air particulate samples for radioactive particles. Emission rates were entered in the USEPA computer code CAP88-PC, Version 4.1 (USEPA 2020), along with appropriate meteorological data and distances to receptors¹, to obtain the effective dose equivalent (EDE) from the air emissions.

Although 40 *CFR* 61.103, *Determining Compliance*, requires the use of the USEPA computer code COMPLY, the USEPA no longer supplies technical support for COMPLY. Because the USEPA lists both COMPLY and CAP88-PC as “Atmospheric transport models for assessing dose and risk from radioactive air emissions” (USEPA 2015), CAP88-PC was used as a comparable and conservative method to demonstrate compliance with the ARARs.

3.1.1 Emission Rate

The method used to determine particulate radionuclide emission rates from IAAAP OU-8 was 40 *CFR* 61, Appendix D, *Methods for Estimating Radionuclide Emissions*. Emissions during excavations, soil sorting, stockpiling, and waste loadout were evaluated using air particulate data collected at the excavation, soil sorting area, soil stockpile area, and waste loadout perimeters.

3.1.2 Effective Dose Equivalent

The EDE to receptors is obtained using the USEPA computer code CAP88-PC, Version 4.1 (USEPA 2020). CAP88-PC uses a Gaussian plume equation to estimate the dispersion of radionuclides. An area ground release at a height of 1 m is modeled for IAAAP OU-8.

The EDE is the dose from inhalation; exposures from ingestion, air immersion, and external ground surface are insignificant. CAP88-PC contains historical weather data libraries for major airports across the country, and the results can be modeled for receptors at multiple distances from the emission source.

3.2 METEOROLOGICAL DATA

Meteorological data were obtained from CAP88-PC for the Quad City International Airport in Moline, Illinois (wind file 14923.WND). The Quad City International Airport, located 60 miles northeast of IAAAP, is the closest airport to IAAAP with meteorological data. Data in the file were accumulated from 1988 through 1992.

- Average Annual Wind Velocity: 4.252 m per second
- Average Annual Precipitation Rate: 103 cm per year
- Average Annual Air Temperature: 11 °C

Wind direction frequency was obtained from the CAP88-PC wind file, 14923.WND (Table 3-1).

¹ “Receptors,” as used in this EMDAR, are the locations for the nearest residence, school, business, and farm.

Table 3-1. Quad City International Airport Wind Rose Frequency

Wind Direction		Wind Frequency (Percent)	Wind Direction		Wind Frequency (Percent)
Wind Toward	Wind From		Wind Toward	Wind From	
North	South	12.8	South	North	5.0
North-Northwest	South-Southeast	4.5	South-Southeast	North-Northwest	3.3
Northwest	Southeast	3.6	Southeast	Northwest	5.5
West-Northwest	East-Southeast	5.2	East-Southeast	West-Northwest	9.0
West	East	8.6	East	West	0.5
West-Southwest	East-Northeast	5.2	East-Northeast	West-Southwest	8.5
Southwest	Northeast	3.5	Northeast	Southwest	6.6
South-Southwest	North-Northeast	2.5	North-Northeast	South-Southwest	6.9

3.3 IAAAP OPERABLE UNIT 8 SITES UNDER ACTIVE REMEDIATION

3.3.1 Material Handling and Processing for Calendar Year 2021

At IAAAP OU-8 in CY 2021, remedial activities were performed at the FS-12 Area, and waste loadout activities were conducted at M-Yard. Excavation was conducted at the FS-12 Area in 2021, and then excavated soil was placed at the FS-12 Area prior to treatment (i.e., soil sorting). The excavated material (soil and woodchips) (27,256 tons) was then sorted, with 2,373 tons of the material diverted to a post-sorting contaminated (i.e., greater than the ROD RG) material pile. The post-sorting contaminated material pile was not covered when soil sorting activities were concluded. The post-sorting re-use soil (i.e., less than the ROD RG) pile was not covered pending use as backfill. Contaminated soil, woodchips, debris, and other materials from remedial activities during 2021 were transported to M-Yard via covered dump trucks, stockpiled, and loaded onto covered railcars for off-site disposal.

General area air particulate samples were collected around active excavation perimeters, soil sorting activities, soil stockpiling, and waste loadout activities during CY 2021, with the results used to determine the site emissions. In-situ emissions from inactive areas of IAAAP OU-8 were not calculated because the ground surface soil at IAAAP is generally covered with vegetation that limits the potential for material to become airborne.

3.3.2 Source Description – Radionuclide Soil Concentrations

The averaged total alpha air particulate concentrations at the FS-12 Area and M-Yard, along with the three depleted uranium (DU) activity fractions listed in Section 2.5.7 of the ROD, were used to calculate the emission rate for each area (Appendix A). Activity fractions for the contaminants of concern (COCs) are as follows:

- 90.14 percent (uranium [U]-238),
- 1.45 percent (U-235), and
- 8.40 percent (U-234).

3.3.3 List of Assumed Air Releases for Calendar Year 2021

Particulate radionuclide emissions were evaluated for potential wind erosion of soil during periods of RA excavations, soil sorting, and from soil stockpiles. The FS-12 Area excavation area, the soil sorting area, the FS-12 Area excavated soil pile, the FS-12 Area post-sorting contaminated soil pile, and M-Yard loadout pile were assumed to be contributing to air releases during the dates in 2021 when the SUs were undergoing excavation (open), and when the soil sorting and loadout piles were

uncovered. Verification data for post-sorting re-use soil pile and non-backfilled excavation surfaces are less than the soil RG, and therefore are protective of human health and the environment and do not contribute to the emission determinations. Unexcavated areas do not contribute to the emission determinations for periods of inactivity due to the low activity and vegetative cover. Appendix A, Table A-1, lists the dates in 2021 of potential air releases by location.

3.3.4 Distances to Receptors

The distances to receptors are listed in Table 3-2. Distances and directions to receptors are determined by using tools in a geographic information system (GIS). The locations of the receptors are shown on Figure 3-1.

Table 3-2. IAAAP Operable Unit 8 Receptors for CY 2021

Sources	Resident		Farm		Business ^a		School	
	Distance (m)	Direction	Distance (m)	Direction	Distance (m)	Direction	Distance (m)	Direction
FS-12 Area	2,714	West	2,714	West	613	East	7,894	Northwest
M-Yard	3,498	Northwest	3,498	Northwest	521	Northwest	9,463	Northwest

^a The business receptors, an IAAAP employee at the IDA and at the FS-1 and FS-2 Area, are average members of the critical group.

3.4 EMISSIONS DETERMINATION

3.4.1 Measured Airborne Radioactive Particulate Emissions

Air particulate samples were collected from several locations around the perimeter of the FS-12 Area excavation, FS-12 Area soil sorting area, FS-12 Area soil stockpile areas, and M-Yard loadout area to measure the radionuclide emissions from the RA, soil sorting, soil stockpile, and soil loadout. The air particulate samples provide the basis for determining the radionuclide emission rates during CY 2021 (Appendix A). Sample data for air particulate samples were determined through the use of calibrated field instruments. Appendix B, Table B-1, is a summary table of the air particulate sample data from the calibrated field instruments. In CY 2021, seventeen (17) samples were submitted to the FUSRAP St. Louis Radioanalytical Laboratory for gross alpha/beta analysis to verify sample results from the calibrated field instruments. Appendix B, Table B-2, presents data from the project laboratory. Gross alpha particulate results (Table B-1) less than zero indicate the result was less than the average background value for the instrument. When calculating an average airborne concentration, negative data points were rounded to a zero value. The average gross alpha concentration (in $\mu\text{Ci}/\text{mL}$) for CY 2021 was determined for the FS-12 Area and M-Yard and is presented in Table 3-3.

Table 3-3. IAAAP Operable Unit 8 Average Gross Alpha Airborne Particulate Emissions for CY 2021

Sampler Location	Average Concentration ($\mu\text{Ci}/\text{mL}$)
	Gross Alpha
FS-12 Area ^a	8.48E-15
M-Yard ^b	3.81E-15

^a Includes the emission rates from the RA, soil sorting, and soil stockpiles.

^b Includes the emission rates from the loadout activities.

The activity fractions for DU at IAAAP OU-8 were determined as described in Section 3.3.2. The product of the DU activity fraction and the gross concentration provides the radionuclide emission concentration (in $\mu\text{Ci}/\text{mL}$) for that area. The gross average concentration (in $\mu\text{Ci}/\text{mL}$) is converted to a release (i.e., emission) rate (in Ci per year) using Equations 1 and 2 from *A Guide for*

Determining Compliance with the Clean Air Act Standards for Radionuclide Emissions from NRC-Licensed and Non-DOE Federal Facilities (USEPA 1989). Equation 1 is used, as follows, to determine the effective diameter of a non-circular stack or vent.

$$D = (1.3 A)^{1/2} \quad \text{Equation 1}$$

where:

- D = effective diameter of the release (in m)
- A = area of the stack, vent, or release point (in m²)

Table 3-4 provides (1) the effective surface area available for release of airborne radionuclides normalized to 1 year for the FS-12 Area and M-Yard and (2) the effective diameter for the FS-12 Area and M-Yard, where soil excavation, sorting, stockpiling and/or loadout was conducted in CY 2021. Calculation of the effective surface area is presented in Appendix A.

Table 3-4. IAAAP Operable Unit 8 Excavation Effective Surface Areas and Effective Diameters for CY 2021

IAAAP OU-8 Location	Effective Area (m ²)	Effective Diameter (m)
FS-12 Area	10,487	117
M-Yard	13	4

The average annual wind speed for the Quad City International Airport is provided in CAP88-PC as 4.252 m per second. Conversion of this wind speed to a flow rate through stacks with the listed effective diameters for each area is completed using Equation 2, shown as follows.

$$F = V \pi [(D)^2 / 4] * 60 \quad \text{Equation 2}$$

where:

- F = flow rate (in m³ per minute)
- V = wind velocity (in m per second)
- π = mathematical constant
- D = effective diameter of the release using Equation 1 (in m)
- 60 = time conversion (seconds to minute)

Converting the velocity of emissions from the FS-12 Area and M-Yard to an effective flow rate results in the following site release flow rates for IAAAP OU-8 areas, as listed in Table 3-5. The product of the flow rate, the activity fraction associated with each radionuclide, and the appropriate conversion factors provide the site emission rate for each radionuclide, as illustrated in Table 3-6. Appendix A contains flow rates and average radionuclide concentration data.

Table 3-5. IAAAP Operable Unit 8 Areas Release Flow Rate for CY 2021

IAAAP OU-8 Location	Site Release Flow Rate (m ³ /minute)
FS-12 Area	2.7E+06
M-Yard	3.42E+03

3.4.2 IAAAP Operable Unit 8 Total Airborne Radioactive Particulate Emission Rates

The CY 2021 emission rates for the FS-12 Area and M-Yard are presented in Table 3-6 and are based on the air particulate samples collected from the perimeter of the excavated area, soil sorting area, stockpiled soil area, and loadout area.

Table 3-6. IAAAP Operable Unit 8 Airborne Radioactive Particulate Emission Rates Based on Perimeter Air Particulate Samples for CY 2021

Radionuclide	Emission Rate (Ci/year) ^a	
	FS-12 Area	M-Yard
U-238	1.1E-02	6.2E-06
U-235	1.8E-04	9.9E-08
U-234	1.0E-03	5.8E-07

^a Emission rate based on a 365-day period at a respective flow rate (as presented in Table 3-5) as determined from the average annual wind speed (i.e., 4.252 m per second) and the effective site area (as presented in Table 3-4) for each location.

3.4.3 CAP88-PC Results

The CAP88-PC report is contained in Appendix C. The effective area factor input was taken from Table 3-4. The individual dose results for the FS-12 Area and M-Yard were summed for the residential, farm, business, and school receptors. As shown in Table 3-7, this evaluation demonstrates that all IAAAP OU-8 receptors, including the hypothetical maximally exposed individuals at IAAAP OU-8 (i.e., the business receptors, an IAAAP employee at the IDA and at the FS-1 and FS-2 Area, who are average members of the critical group), receive less than the dose standards prescribed in 10 *CFR* 20.1101(d) (i.e., 10 mrem per year) and 10 *CFR* 20.1403(b) (i.e., 25 mrem per year).

Table 3-7. IAAAP Operable Unit 8 CAP88-PC Results for Receptors for CY 2021

Source	Dose (mrem/year)			
	Resident ^a	School ^b	Business ^{b,c}	Farm ^a
FS-12 Area	<0.1	<0.1	<0.1	<0.1
M-Yard	<0.1	<0.1	<0.1	<0.1

^a 100 percent occupancy factor.

^b Corrected for the 23 percent occupancy factor (i.e., 40 hours per week for 50 weeks per year).

^c The business receptors, an IAAAP employee at the IDA and at the FS-1 and FS-2 Area, are average members of the critical group.

THIS PAGE INTENTIONALLY LEFT BLANK

4.0 SURFACE WATER, SEDIMENT, AND STORMWATER MONITORING

4.1 SURFACE WATER AND SEDIMENT MONITORING

Surface water and sediment monitoring in the branches of Long Creek to the east and south of the FS-12 Area and in Long Creek downgradient of the FS-12 Area was performed as a best management practice. Surface water and sediment were sampled for the uranium isotopes to evaluate/determine if runoff from the FS-12 Area affects the quality of surface water and sediment in Long Creek as a potential result of RA.

Surface water and sediment sampling was conducted during April and November of CY 2021. Grab samples were collected and analyzed for isotopic uranium according to the protocol defined in Appendix D of the *Remedial Investigation Work Plan for Line 1, Firing Sites Area, Yards C, G, and L, Warehouse 3-01 and the West Burn Pads Area South of the Road* (RI WP) (USACE 2007). The sampling events were conducted at 10 monitoring stations. Of these 10 stations, 8 stations were established in 2007 during the remedial investigation, and the remaining 2 stations (i.e., IAAP177509 and IAAP177517) were established in December 2014. Location IAAP100164 is located in a drainage feature, and the other locations are all located along Long Creek. Locations of the 10 surface water and sediment monitoring stations are shown on Figure 4-1.

4.2 SURFACE WATER MONITORING RESULTS

The radiological monitoring results for the CY 2021 surface water sampling events are summarized in Table 4-1. FUSRAP surface water monitoring analysis included unfiltered water samples for radionuclides associated with DU (i.e., U-234, U-235, and U-238). The monitoring results are presented in Appendix D, Table D-1, of this EMDAR.

Table 4-1. Radiological Results for CY 2021 Surface Water Monitoring

Monitoring Station	Collection Date	Monitoring Parameters (pCi/L)		
		U-234	U-235	U-238
IAAP100153	04/14/21	1.08	0.49 ^a	0.39 ^a
IAAP100153	11/19/21	0.57	0.55 ^a	1.05
IAAP100154	04/14/21	0.55 ^a	0.64 ^a	0.37 ^a
IAAP100154	11/20/21	0.71	0.47 ^a	0.38 ^a
IAAP100155	04/14/21	0.57	0.60 ^a	0.52
IAAP100155	11/20/21	0.44 ^a	0.75 ^a	0.99
IAAP100164	^b	^b	^b	^b
IAAP100164	^b	^b	^b	^b
IAAP100165	04/14/21	0.50	0.43 ^a	0.71
IAAP100165	11/20/21	0.54 ^a	0.48 ^a	0.54 ^a
IAAP100178	04/14/21	0.52	0.51 ^a	0.75
IAAP100178	11/20/21	0.37 ^a	0.63 ^a	0.51 ^a
IAAP100180	04/14/21	0.53	0.45 ^a	0.43 ^a
IAAP100180	11/20/21	0.53 ^a	0.56 ^a	0.38 ^a
IAAP100187	04/14/21	0.86	0.47 ^a	0.67
IAAP100187	11/20/21	1.00	0.66 ^a	0.85
IAAP177509	04/14/21	0.60	0.54 ^a	0.75
IAAP177509	11/20/21	0.58	0.61 ^a	0.53
IAAP177517	04/14/21	0.75	0.53 ^a	0.42 ^a
IAAP177517	11/20/21	0.89	0.49 ^a	0.65

^a Reported result is less than the minimum detectable concentration (MDC) and is therefore set equal to the MDC.

^b No surface water was present at the sample location due to seasonal weather conditions. No surface water sample was collected.

The historical radiological surface water monitoring data for all monitoring stations are summarized in Table 4-2.

Table 4-2. Comparison of Historical Radiological Surface Water Results

Stations	Radionuclide	Units	December 2014	August 2015	December 2015	April 2016	November 2016	April 2017	November 2017	April 2018	November 2018	April 2019	November 2019	April 2020	November 2020	April 2021	November 2021
IAAP100153	U-234	pCi/L	0.59	0.92	0.36	0.64	1.28	1.28	1.46	0.83	1.17	1.07	1.84	0.60 ^a	0.38 ^a	1.08	0.57
	U-235	pCi/L	0.16 ^a	0.18 ^a	0.63 ^a	0.63 ^a	0.20 ^a	0.18 ^a	0.23 ^a	0.55 ^a	0.57 ^a	0.40 ^a	0.41 ^a	0.81 ^a	0.43 ^a	0.49 ^a	0.55 ^a
	U-238	pCi/L	0.67	0.18	0.65	0.30	0.91	1.31	1.36	0.79	1.81	0.54	1.85	0.75 ^a	0.35 ^a	0.39 ^a	1.05
IAAP100154	U-234	pCi/L	0.63	0.56	0.52	0.48 ^a	0.83	1.29	0.80	1.22	1.28	1.11	1.18	0.61 ^a	0.51 ^a	0.55 ^a	0.71
	U-235	pCi/L	0.20 ^a	0.22 ^a	0.44 ^a	0.22 ^a	0.23 ^a	0.19 ^a	0.57 ^a	0.44 ^a	0.72 ^a	0.67 ^a	0.56 ^a	0.86 ^a	0.38 ^a	0.64 ^a	0.47 ^a
	U-238	pCi/L	0.64	0.33	0.38	0.52	1.07	0.95	0.62	0.50 ^a	0.46	0.95	1.77	0.74	0.61	0.37 ^a	0.38 ^a
IAAP100155	U-234	pCi/L	0.95	0.54 ^a	0.70	0.71 ^a	0.62	1.65	1.23	1.09	0.61	1.20	0.64	0.94 ^a	0.69 ^a	0.57	0.44 ^a
	U-235	pCi/L	0.14 ^a	0.22 ^a	0.47 ^a	0.23 ^a	0.24 ^a	0.18 ^a	0.21 ^a	0.51 ^a	0.55 ^a	0.55 ^a	0.56 ^a	0.83 ^a	0.85 ^a	0.60 ^a	0.75 ^a
	U-238	pCi/L	0.34	0.75	0.54 ^a	0.42 ^a	0.44 ^a	1.26	1.17	0.5	0.46 ^a	0.77	0.45 ^a	0.86 ^a	0.41 ^a	0.52	0.99
IAAP100164	U-234	pCi/L	1.12	0.72	0.31 ^a	0.37	b	b	b	b	b	0.4	b	2.25	b	b	b
	U-235	pCi/L	0.16 ^a	0.58 ^a	0.47 ^a	0.19 ^a	b	b	b	b	b	0.37 ^a	b	0.88 ^a	b	b	b
	U-238	pCi/L	1.44	0.64	0.13 ^a	0.45	b	b	b	b	b	0.58	b	3.84	b	b	b
IAAP100165	U-234	pCi/L	0.68	0.24	0.45	0.61 ^a	0.74	0.78	0.51	0.63	0.72	0.70	0.55 ^a	0.67 ^a	0.53 ^a	0.50	0.54 ^a
	U-235	pCi/L	0.16 ^a	0.59	0.17 ^a	0.48 ^a	0.25 ^a	0.41 ^a	0.50 ^a	0.52 ^a	0.40 ^a	0.74 ^a	0.62 ^a	0.90 ^a	0.60 ^a	0.43 ^a	0.48 ^a
	U-238	pCi/L	0.58	0.16 ^a	0.36	0.68	0.20 ^a	0.31	0.25	0.48 ^a	0.72	0.56	0.50 ^a	0.66 ^a	0.68 ^a	0.71	0.54 ^a
IAAP100178	U-234	pCi/L	0.39	0.36	0.67	0.60	0.42 ^a	1.02	1.01	0.58 ^a	0.50	0.66 ^a	0.36 ^a	0.81 ^a	0.55	0.52	0.37 ^a
	U-235	pCi/L	0.16 ^a	0.39 ^a	0.42 ^a	0.22 ^a	0.52 ^a	0.20 ^a	0.52 ^a	0.72 ^a	0.66 ^a	0.63 ^a	0.49 ^a	0.86 ^a	0.40 ^a	0.51 ^a	0.63 ^a
	U-238	pCi/L	0.37 ^a	0.20 ^a	0.41	0.49	0.80	0.74	0.54	0.42 ^a	0.45 ^a	0.62 ^a	0.51 ^a	0.91	0.37 ^a	0.75	0.51 ^a
IAAP100180	U-234	pCi/L	0.77	0.36	0.42	0.62	0.35 ^a	0.67	0.82	0.71	0.40	1.24	0.37	0.67 ^a	0.6	0.53	0.53 ^a
	U-235	pCi/L	0.16 ^a	0.20 ^a	0.15 ^a	0.24 ^a	0.20 ^a	0.20 ^a	0.19 ^a	0.66 ^a	0.63 ^a	0.53 ^a	0.49 ^a	0.66 ^a	0.73 ^a	0.45 ^a	0.56 ^a
	U-238	pCi/L	0.48 ^a	0.38 ^a	0.40	0.58	0.35 ^a	0.47	0.53	0.83	0.51 ^a	0.71	0.44 ^a	0.58 ^a	0.78	0.43 ^a	0.38 ^a
IAAP100187	U-234	pCi/L	1.07	0.52	0.34 ^a	0.43	0.39	0.43	0.61	0.56 ^a	0.33 ^a	0.53	1.06	0.79 ^a	0.56	0.86	1.00
	U-235	pCi/L	0.20 ^a	0.55 ^a	0.52 ^a	0.21 ^a	0.71 ^a	0.16 ^a	0.21 ^a	0.65 ^a	0.49 ^a	0.44 ^a	0.45 ^a	0.89 ^a	0.44 ^a	0.47 ^a	0.66 ^a
	U-238	pCi/L	0.45	0.33	0.42	0.43	0.29	0.44	0.43	0.76	0.46 ^a	0.54	0.62	0.78 ^a	1.05	0.67	0.85
IAAP177509	U-234	pCi/L	0.90	1.79	0.48	0.43 ^a	1.06	1.08	0.55	0.89	0.55	1.30	0.74	0.54 ^a	0.4	0.60	0.58
	U-235	pCi/L	0.17 ^a	0.21 ^a	0.19 ^a	0.24 ^a	0.20 ^a	0.39 ^a	0.18 ^a	0.69 ^a	0.45 ^a	0.44 ^a	0.49 ^a	0.73 ^a	0.62 ^a	0.54 ^a	0.61 ^a
	U-238	pCi/L	0.43	1.17	0.29	0.19 ^a	0.72	1.03	0.40	0.56	0.68	1.77	1.06	0.6	0.46	0.75	0.53
IAAP177517	U-234	pCi/L	0.71	0.54 ^a	0.63	0.47	0.93	0.16 ^a	0.41 ^a	0.76	0.87	0.70	0.66	0.65 ^a	0.76	0.75	0.89
	U-235	pCi/L	0.16 ^a	0.22 ^a	0.17 ^a	0.65 ^a	0.57 ^a	0.19 ^a	0.41 ^a	0.64 ^a	0.41 ^a	0.41 ^a	0.72 ^a	0.99 ^a	0.73 ^a	0.53 ^a	0.49 ^a
	U-238	pCi/L	0.52	0.43 ^a	0.51	0.68	0.50	0.46 ^a	0.51	0.83	0.33 ^a	0.64	0.56 ^a	0.92 ^a	0.55	0.42 ^a	0.65

^a Reported result is less than the MDC and is therefore set equal to the MDC.^b No surface water was present at the sample location due to seasonal weather conditions. No surface water sample was collected.

4.3 SEDIMENT MONITORING RESULTS

Sediment samples were collected in depositional environments near each of the 10 previously described surface water locations (Figure 4-1). Sediment samples were evaluated for the radiological constituents associated with DU (i.e., U-234, U-235, and U-238). The analytical results from these monitoring activities are presented in Appendix D, Table D-2, of this EMDAR.

The radiological results for CY 2021 sediment sampling events are summarized in Table 4-3. The ROD (USACE 2011) established a soil RG for DU which uses U-238 as a surrogate. Therefore, sediment sampling results for U-238 were compared against the corresponding soil RG of 150 pCi/g established in the ROD. All sediment monitoring results for U-238 were less than 1 percent of the soil RG.

Table 4-3. Radiological Results for CY 2021 Sediment Monitoring

Monitoring Station	Collection Date	Monitoring Parameters (pCi/g)		
		U-234	U-235 ^a	U-238
IAAP100153	04/14/21	0.82	0.24 ^a	0.89
IAAP100153	11/19/21	0.14	0.18 ^a	0.25
IAAP100154	04/14/21	0.54	0.15 ^a	0.66
IAAP100154	11/20/21	0.59	0.21 ^a	0.49
IAAP100155	04/14/21	0.37	0.34 ^a	0.40
IAAP100155	11/20/21	0.25	0.17 ^a	0.70
IAAP100164	04/15/21	0.71	0.24 ^a	0.77
IAAP100164	11/20/21	0.84	0.23 ^a	0.79
IAAP100165	04/14/21	0.71	0.20 ^a	1.13
IAAP100165	11/20/21	0.52	0.22 ^a	0.47
IAAP100165	11/20/21	0.73	0.23 ^a	0.78
IAAP100178	04/15/21	0.79	0.29 ^a	0.57
IAAP100178	11/20/21	0.38	0.13 ^a	0.29
IAAP100180	04/15/21	0.37	0.26 ^a	0.34
IAAP100180	11/20/21	0.35	0.13 ^a	0.42
IAAP100187	04/15/21	0.26	0.21 ^a	0.39
IAAP100187	11/20/21	0.45	0.15 ^a	0.34
IAAP177509	04/15/21	0.58	0.14 ^a	0.43
IAAP177509	11/20/21	0.56	0.14 ^a	0.43
IAAP177517	04/14/21	0.28	0.20 ^a	0.34
IAAP177517	11/19/21	0.16	0.16 ^a	0.15

^a Reported result is less than the MDC and is therefore set equal to the MDC.

The historical radiological sediment monitoring data for all monitoring stations are summarized in Table 4-4.

Table 4-4. Comparison of Historical Radiological Sediment Results

Stations	Radionuclide	Units	April 2007	December 2014	August 2015	December 2015	April 2016	November 2016	April 2017	November 2017	April 2018	November 2018	April 2019	November 2019	April 2020	November 2020	April 2021	November 2021
IAAP100153	U-234	pCi/g	^a	0.56	0.51	0.43	0.99	0.42	0.75	0.37	0.22	0.20	0.09 ^b	0.59	0.83	0.31	0.82	0.14
	U-235	pCi/g	0.11 ^b	0.05 ^b	0.58 ^b	0.13 ^b	0.17 ^b	0.21 ^b	0.18 ^b	0.10 ^b	0.22 ^b	0.16 ^b	0.15 ^b	0.19 ^b	0.19 ^b	0.22 ^b	0.24 ^b	0.18 ^b
	U-238	pCi/g	0.50	0.43	1.00	0.20 ^b	0.85	0.31 ^b	1.02	0.50	0.17	0.23	0.16	0.74	0.7	0.41	0.89	0.25
IAAP100154	U-234	pCi/g	^a	0.37	0.53 ^b	0.46	0.82	0.36 ^b	0.54	0.20	0.92	0.73	0.24	0.44	0.82	0.56	0.54	0.59
	U-235	pCi/g	0.17 ^b	0.13 ^b	0.55 ^b	0.28 ^b	0.36 ^b	0.44 ^b	0.26 ^b	0.04 ^b	0.21 ^b	0.17 ^b	0.09 ^b	0.37 ^b	0.28 ^b	0.24 ^b	0.15 ^b	0.21 ^b
	U-238	pCi/g	0.49	0.50	0.44 ^b	0.45	1.08	0.75	0.31	0.14	0.55	1.05	0.26	0.35	0.85	0.34	0.66	0.49
IAAP100155	U-234	pCi/g	^a	0.19	0.61 ^b	0.61	0.76	0.40	0.67	0.18	0.31	0.45	0.29	0.17 ^b	0.20	0.54	0.37	0.25
	U-235	pCi/g	0.17 ^b	0.12 ^b	0.61 ^b	0.24 ^b	0.18 ^b	0.20 ^b	0.19 ^b	0.04	0.26 ^b	0.18 ^b	0.10 ^b	0.18 ^b	0.27 ^b	0.16 ^b	0.34 ^b	0.17 ^b
	U-238	pCi/g	0.37	0.24	0.49	0.83	0.86	0.30 ^b	0.85	0.19	0.50	0.62	0.48	0.14	0.22 ^b	0.61	0.40	0.70
IAAP100164	U-234	pCi/g	^a	0.79	0.52 ^b	0.94	0.74	0.52	1.04	0.67	0.85	0.40	0.82	0.58	1.06	0.65	0.71	0.84
	U-235	pCi/g	0.22 ^b	0.12 ^b	0.57 ^b	0.33 ^b	0.14 ^b	0.40 ^b	0.31 ^b	0.10 ^b	0.17 ^b	0.20 ^b	0.13	0.34 ^b	0.19 ^b	0.22 ^b	0.24 ^b	0.23 ^b
	U-238	pCi/g	0.87	0.84	0.59	1.01	0.47	0.84	0.84	0.81	0.91	0.66	0.82	0.95	1.25	1.06	0.77	0.79
IAAP100165	U-234	pCi/g	^a	0.17	0.20 ^b	0.59	0.38	0.26	0.28	0.32	0.37	0.15 ^b	0.26	0.58	0.15 ^b	0.53	0.71	0.52
	U-235	pCi/g	0.13 ^b	0.05 ^b	0.24 ^b	0.37 ^b	0.26 ^b	0.33 ^b	0.13 ^b	0.09 ^b	0.16 ^b	0.34 ^b	0.09 ^b	0.29 ^b	0.17 ^b	0.23 ^b	0.20 ^b	0.22 ^b
	U-238	pCi/g	0.29	0.14	0.43	1.07	0.41	0.35	0.31	0.20	0.21 ^b	0.33	0.25	0.50	0.19	0.76	1.13	0.47
IAAP100178	U-234	pCi/g	^a	0.33	0.53	0.30 ^b	0.62	0.39	0.41	0.50	0.71	0.42	0.31	0.55	0.46	1.05	0.79	0.38
	U-235	pCi/g	0.11 ^b	0.13 ^b	0.49 ^b	0.17 ^b	0.15 ^b	0.19 ^b	0.11 ^b	0.10 ^b	0.21 ^b	0.28 ^b	0.14 ^b	0.20 ^b	0.17 ^b	0.19 ^b	0.29 ^b	0.13 ^b
	U-238	pCi/g	0.23 ^b	0.37	0.33	0.30 ^b	0.18	0.29	0.44	0.38	0.55	0.57	0.33	0.52	0.53	0.92	0.57	0.29
IAAP100180	U-234	pCi/g	^a	0.26	0.23 ^b	0.39	0.31 ^b	0.40	0.36	0.23	0.31	0.43	0.24	0.35	0.30	0.35	0.37	0.35
	U-235	pCi/g	0.16 ^b	0.13 ^b	0.52 ^b	0.27 ^b	0.21 ^b	0.28 ^b	0.23 ^b	0.09 ^b	0.20 ^b	0.18 ^b	0.08 ^b	0.18 ^b	0.19 ^b	0.21 ^b	0.26 ^b	0.13 ^b
	U-238	pCi/g	0.41	0.19	0.23 ^b	0.59	0.49	0.39	0.37	0.33	0.21	0.23	0.22	0.22	0.31	0.26	0.34	0.42
IAAP100187	U-234	pCi/g	^a	0.34	0.39	0.34	0.29 ^b	0.58	0.29	0.35	0.35	0.75	0.10 ^b	0.20	0.44	0.55	0.26	0.45
	U-235	pCi/g	0.14 ^b	0.16 ^b	0.36 ^b	0.27 ^b	0.27 ^b	0.15 ^b	0.16 ^b	0.03 ^b	0.17 ^b	0.17 ^b	0.12 ^b	0.21 ^b	0.18 ^b	0.21 ^b	0.21 ^b	0.15 ^b
	U-238	pCi/g	0.30	0.37	0.29 ^b	0.64	0.25	0.31	0.36	0.34	0.23 ^b	0.64	0.25	0.34	0.60	0.41	0.39	0.34
IAAP177509 ^c	U-234	pCi/g	^d	0.17	0.14 ^b	0.62	0.32 ^b	0.39	0.09 ^b	0.32	0.33	0.22	0.41	0.37	0.67	0.51	0.58	0.56
	U-235	pCi/g	^d	0.04 ^b	0.33 ^b	0.15 ^b	0.21 ^b	0.17 ^b	0.10 ^b	0.22 ^b	0.31 ^b	0.22 ^b	0.08 ^b	0.24 ^b	0.17 ^b	0.11 ^b	0.14 ^b	0.14 ^b
	U-238	pCi/g	^d	0.27	0.32 ^b	0.68	0.81	0.25	0.31	0.71	0.31	0.51	0.57	0.63	0.72	0.56	0.43	0.43
IAAP177517 ^c	U-234	pCi/g	^d	0.27	0.41	0.40	0.32	0.47	0.13	0.17	0.29	0.90	0.18	0.42	0.40	0.43	0.28	0.16
	U-235	pCi/g	^d	0.04 ^b	0.23 ^b	0.17 ^b	0.16 ^b	0.16 ^b	0.21 ^b	0.04	0.16 ^b	0.20 ^b	0.07 ^b	0.21 ^b	0.21 ^b	0.23 ^b	0.20 ^b	0.16 ^b
	U-238	pCi/g	^d	0.18	0.41	0.54	0.28	0.28 ^b	0.24	0.28	0.27	1.22	0.23	0.48	0.36	0.40	0.34	0.15

^a Sample was not analyzed for U-234.^b Reported result is less than the MDC and is therefore set equal to the MDC.^c Stations IAAP177509 and IAAP177517 were established and initially sampled in December 2014.^d Sample not collected in 2007.

4.4 STORMWATER MONITORING

No stormwater monitoring samples were collected in CY 2021.

4.5 CONCLUSION

Surface water and sediment sampling results from CY 2021 indicate that RA at the FS-12 Area is not having a negative effect on Long Creek.

THIS PAGE INTENTIONALLY LEFT BLANK

5.0 ENVIRONMENTAL QUALITY ASSURANCE PROGRAM

5.1 PROGRAM OVERVIEW

The environmental quality assurance (QA) program includes management of the QA/quality control (QC) programs, plans, and procedures governing environmental monitoring activities at IAAAP, the project laboratory, and at a USACE-subcontracted vendor QA laboratory. The environmental monitoring standards of FUSRAP and the goals for these programs, plans, and procedures are described in this section.

The environmental QA program provides FUSRAP with reliable, accurate, and precise monitoring data. The program furnishes guidance and directives to detect and prevent problems from the time a sample is collected until the associated data are evaluated.

Key elements in achieving the goals of this program are personnel training; compliance assessments; use of QC samples; documentation of field activities and laboratory analyses; and a review of data documents for precision, accuracy, and completeness.

General objectives of the program are to accomplish the following.

- Provide data of sufficient quality and quantity to support ongoing remedial efforts.
- Ensure samples were collected using approved techniques and are representative of existing site conditions.

5.2 QUALITY ASSURANCE PROJECT PLAN

The quality assurance project plan (QAPP) for environmental monitoring activities performed at IAAAP OU-8 is contained in Appendix D of the RI WP (USACE 2007). The QAPP provides the organization, objectives, functional activities, and specific QA/QC activities associated with environmental monitoring activities at IAAAP OU-8.

QA/QC procedures are performed in accordance with applicable professional technical standards, USEPA requirements, government regulations and guidelines, and specific project goals and requirements. The QAPP was prepared in accordance with USEPA and USACE guidance documents, including *Interim Guidelines and Specifications for Preparing Quality Assurance Project Plans* (USEPA 1991), *EPA Requirements for Quality Assurance Project Plans for Environmental Data Operations* (USEPA 1994), and Engineer Manual (EM) 200-1-3, *Requirements for the Preparation of Sampling and Analysis Plans* (USACE 2001).

The QAPP summarizes standard operating procedures (SOPs) and data quality requirements for collecting and analyzing environmental data. The QAPP integrates protocols and methodologies identified under various USACE and regulatory guidance. This plan documents administrative procedures for managing environmental data and governs sampling plan preparation; data review, evaluation, and validation; database administration; and data archiving.

5.3 FIELD SAMPLE COLLECTION AND MEASUREMENT

Prior to beginning field sampling, field personnel were trained, as necessary, and participated in a project-specific readiness review. These activities ensured standard procedures were followed in sample collection and in completion of field logbooks, chain-of-custody forms, labels, and custody seals. Documentation of training and readiness is retained in the project file.

The master field investigation documents are the site field logbooks. The primary purpose of these documents is to record daily field activities; personnel on each sampling team; and any administrative occurrences, conditions, or activities that may have affected the field work or data quality of any environmental samples for a given day. Guidance for documenting specific types of field sampling activities in field logbooks or on log sheets is contained in Appendix C of EM 200-1-3, *Requirements for the Preparation of Sampling and Analysis Plans* (USACE 2001).

At any point in the process of sample collection or data and document review, a non-conformance report may be initiated if non-conformances are identified (Leidos 2015a). Data entered into the database may be flagged accordingly.

5.4 PERFORMANCE AND SYSTEM AUDITS

Performance and system audits of both field and laboratory activities were conducted to verify that sampling and analysis activities were performed in accordance with the procedures established in the QAPP.

5.4.1 Field Assessments

Internal assessments (i.e., audits or surveillances) of field activities (i.e., sampling and measurements) were conducted by the QA/QC representative (or designee) for FUSRAP. Assessments included an examination of field sampling records, field instrument operating records, sample collection, handling and packaging procedures, maintenance of QA procedures, and chain-of-custody forms. These assessments (i.e., system audits) occurred at the onset of the project to verify all established procedures were followed.

Performance assessments followed the system audits to ensure deficiencies had been corrected and to verify that QA practices/procedures were being maintained throughout the duration of the project. These assessments involved reviewing field measurement records, instrumentation calibration records, and sample documentation.

External assessments may be conducted at the discretion of USACE, the USEPA Region 7, or the State of Iowa.

5.4.2 Project Laboratory Audits

The project laboratory is subject to periodic review(s) (i.e., system audits) by the local USACE chemist to demonstrate compliance with the *Department of Defense (DoD)/Department of Energy (DOE) Consolidated Quality Systems Manual (QSM) for Environmental Laboratories* (QSM) (DOD and DOE 2017). Accordingly, the project laboratory participates in blind, third-party performance evaluation studies (i.e., performance audits) at least twice per year, with results reported to the local USACE point(s) of contact. In addition, contract laboratories are required to be accredited under the U.S. Department of Defense (DOD) Environmental Laboratory Accreditation Program (ELAP). The DOD ELAP requires an annual audit and re-accreditation every 3 years. The annual ELAP audit was performed on August 26-27, 2021.

System audits include examining laboratory documentation of sample receipt, sample log-in, sample storage, chain-of-custody procedures, sample preparation and analysis, and instrument operating records. Performance audits consist of USACE laboratories receiving performance evaluation samples from an outside vendor for an ongoing assessment of laboratory precision and accuracy. The analytical results of performance evaluation samples are evaluated by the USACE St. Louis District chemist to ensure laboratories maintain acceptable performance.

Internal performance and system audits of laboratories were conducted by the Laboratory QA Manager as directed in the *Laboratory Quality Assurance Plan for the FUSRAP St. Louis Radiological Laboratory* (USACE 2013). Internal system audits included an examination of laboratory documentation of sample receipt, sample log-in, sample storage, chain-of-custody procedures, sample preparation and analysis, and instrument operating records against the requirements of the laboratory SOPs. Internal performance audits were also conducted on a regular basis. Single-blind performance samples were prepared along with project samples and submitted to the laboratory for analysis. The Laboratory QA Manager evaluated the analytical results of these single-blind performance samples to ensure the laboratory maintained acceptable performance. Quarterly QA/QC reports are generated and provided to the local USACE authority; these reports document the ongoing QC elements and allow further monitoring of quality processes/status. In addition, QA plans and methodology are to follow the guidance presented in the QSM (DOD and DOE 2017).

5.5 SUBCONTRACTED LABORATORY PROGRAMS

All samples collected during environmental monitoring activities were analyzed by USACE-approved laboratories. The QA samples collected for surface water and sediment were analyzed by the designated USACE-subcontracted QA laboratory. The laboratory supporting this work maintained statements of qualifications, including an organizational structure, QA manual, and SOPs. Additionally, the subcontracted laboratory is an accredited laboratory under the DOD ELAP.

Samples collected during these investigations were analyzed by the USEPA methods contained in USEPA Publication SW-846, *Test Methods for Evaluating Solid Waste, Physical/Chemical Methods* (SW-846) (USEPA 1993), and by other documented USEPA or nationally recognized methods. Laboratory SOPs are based on USEPA SW-846 methods.

5.6 QUALITY ASSURANCE AND QUALITY CONTROL SAMPLES

The surface water and sediment QA/QC samples were analyzed for the purpose of assessing the quality of the sampling effort and the reported analytical data. The QA/QC samples include duplicate samples (-1) and split samples (-2) (see Appendix D). The equations utilized for accuracy and precision are presented in Section 5.8.

5.6.1 Duplicate Samples

These samples, which measure precision, were collected by the sampling teams and were submitted to the project laboratory for analysis. The purpose of these samples is to provide activity-specific, field-originated information regarding the homogeneity of the sampled matrix and the consistency of the sampling effort. These samples were collected concurrently with the primary environmental samples and equally represent the medium at a given time and location. Duplicate samples were collected from surface water and sediment and were submitted to the project laboratory for analysis. One duplicate sample was collected for approximately every 20 field samples of each matrix and analyte. Precision is measured by the relative percent difference (RPD) or the normalized absolute difference (NAD) for radiological analyses.

The RPDs and NADs for radiological analyses are presented in Tables 5-1 and 5-2. The overall precision for CY 2021 environmental monitoring sampling activities was acceptable. See Section 5.8 for the evaluation process.

Table 5-1. Radiological Duplicate Sample Alpha Analysis for CY 2021 – Surface Water

Surface Water Sample Name ^a	U-234 ^b		U-235 ^b		U-238 ^b	
	RPD	NAD	RPD	NAD	RPD	NAD
IAAP239996 / IAAP239996-1	NC	NA	NC	NA	NC	NA

^a Samples ending in "-1" are duplicate samples.

^b RPD criterion for water matrix samples is less than or equal to 30 percent. If the RPD is greater than 30 percent, then the NAD shall be less than or equal to 1.96 to remain within the control limits.

NA – not applicable (see RPD)

NC – not calculated (due to one or both concentrations being below MDCs)

Table 5-2. Radiological Duplicate Sample Alpha Analysis for CY 2021 – Sediment

Sediment Sample Name ^a	U-234 ^b		U-235 ^b		U-238 ^b	
	RPD	NAD	RPD	NAD	RPD	NAD
IAAP248697 / IAAP248697-1	33.87	NA	NC	NA	50.40	0.85

^a Samples ending in "-1" are duplicate samples.

^b RPD criterion for solid matrix samples is less than or equal to 50 percent. If the RPD is greater than 50 percent, then the NAD shall be less than or equal to 1.96 to remain within the control limits.

NA – not applicable (see RPD)

NC – not calculated (due to one or both concentrations being below MDCs)

5.6.2 Split Samples

Split samples measure accuracy and were collected by the sampling team and sent to a USACE-subcontracted QA laboratory for analysis to provide an independent assessment of contractor and subcontractor laboratory performance. One split sample was collected for approximately every 20 field samples of each matrix for radiological analytes.

The RPDs and NADs for radiological analyses are presented in Tables 5-3 and 5-4. The overall accuracy for the CY 2021 environmental monitoring sampling activities was acceptable. See Section 5.8 for the evaluation process.

Table 5-3. Radiological Split Sample Alpha Analysis for CY 2021 – Surface Water

Surface Water Sample Name ^a	U-234 ^b		U-235 ^b		U-238 ^b	
	RPD	NAD	RPD	NAD	RPD	NAD
IAAP239996 / IAAP239996-2	9.00	NA	NC	NA	25.49	NA

^a Samples ending in "-2" are split samples.

^b RPD criterion for water matrix samples is less than or equal to 30 percent. If the RPD is greater than 30 percent, then the NAD shall be less than or equal to 1.96 to remain within the control limits.

NA – not applicable (see RPD)

NC – not calculated (due to one or both concentrations being below MDCs)

Table 5-4. Radiological Split Sample Alpha Analysis for CY 2021 – Sediment

Sediment Sample Name ^a	U-234 ^b		U-235 ^b		U-238 ^b	
	RPD	NAD	RPD	NAD	RPD	NAD
IAAP248697 / IAAP248697-2	26.33	NA	NC	NA	6.65	NA

^a Samples ending in "-2" are split samples.

^b RPD criterion for solid matrix samples is less than or equal to 50 percent. If the RPD is greater than 50 percent, then the NAD shall be less than or equal to 1.96 to remain within the control limits.

NA – not applicable (see RPD)

NC – not calculated (due to one or both concentrations being below MDCs)

5.6.3 Equipment Rinsate Blanks

Equipment rinsate blank samples are typically taken from the rinsate water collected from equipment decontamination activities. These samples consist of analyte-free water that has been rinsed over sampling equipment for the purposes of evaluating the effectiveness of equipment decontamination.

Sediment samples are collected from each station using a clean sampling spoon. These spoons are segregated after use and decontaminated according to Field Technical Procedure 400, *Equipment Decontamination* (Leidos 2015b). Because the process of collecting sediment occurs below the surface of the water, a rinsate blank would not represent the wetted surface of the sampling spoon at the time of sample collection and, therefore, would not apply. The surface water samples are collected using new nitrile gloves and new laboratory sample containers. Equipment rinsate blanks for these samples are also not required because no potential for contamination exists.

5.7 DATA REVIEW, EVALUATION, AND VALIDATION

All data packages received from the analytical laboratories were reviewed and either evaluated or validated by data management personnel. Data validation is the systematic process of ensuring that the precision and accuracy of the analytical data are adequate for their intended use. Validation was performed in accordance with *Data Verification and Validation* (Leidos 2015c), and/or with project-specific guidelines. General chemical data quality management guidance found in Engineer Regulation (ER)-1110-1-263, *Engineering and Design – Chemical Data Quality Management for Hazardous, Toxic, and Radioactive Waste Activities* (USACE 1998), was also used when planning for chemical data management and evaluation. Additional details of data review, evaluation, and validation are provided in *FUSRAP Laboratory Data Management Process for the St. Louis Site* (USACE 1999). Data assessment guidance to determine the usability of data from hazardous, toxic, and radioactive waste projects is provided in EM-200-1-6, *Chemical Quality Assurance for Hazardous, Toxic, and Radioactive Waste (HTRW) Projects* (USACE 1997).

One hundred (100) percent of the data generated from all analytical laboratories was independently reviewed and either evaluated or validated. The data review process documents the possible effects on the data from various QC failures; it does not determine data usability, nor does it include assignment of data validation qualifier (VQ) flags. The data evaluation process uses the results of the data review to determine the usability of the data. The process of data evaluation summarizes the potential effects of QA/QC failures on the data, and a USACE District Chemist or District Health Physicist assesses their impact on the attainment of the project-specific data quality objectives (DQOs). Consistent with the data quality requirements, as defined in the DQOs, approximately 10 percent of all project data were validated.

5.8 PRECISION, ACCURACY, REPRESENTATIVENESS, COMPARABILITY, COMPLETENESS, AND SENSITIVITY

The data evaluation process considers precision, accuracy, representativeness, comparability, completeness, and sensitivity. The following subsections detail the particular parameters and the data evaluation method for each.

Accuracy and precision can be measured by the RPD or the NAD using the following equations:

$$RPD = \left(\frac{|S - D|}{\frac{S + D}{2}} \right) \times 100$$

$$NAD = \frac{|S - D|}{\sqrt{U_S^2 + U_D^2}}$$

where:

- S = Parent Sample Result
- D = Duplicate/Split Sample Result
- U_S = Parent Sample Uncertainty
- U_D = Duplicate/Split Sample Uncertainty

The RPD is calculated for all samples for which a detectable result is reported for both the parent and the QA field split or field duplicate. For surface water radiological samples, when the RPD is greater than 30 percent, the NAD is used to determine the accuracy or precision of the method. The RPD criterion for sediment samples is greater than 50 percent. The NAD accounts for uncertainty in the results; the RPD does not. The NAD should be equal to or less than a value of 1.96. Neither equation is used when the analyte in one or both of the samples is not detected. In cases in which neither equation can be used, the comparison is counted as acceptable in the overall number of comparisons.

Precision is a measure of mutual agreement among individual measurements performed under the same laboratory controls. To evaluate for precision, a field duplicate is submitted to the same laboratory as the original sample to be analyzed under the same laboratory conditions.

The RPD and NAD between the two results was calculated and used as an indication of the precision of the analyses performed (Tables 5-1 and 5-2). Sample collection precision was evaluated in the laboratory by the analyses of duplicates. The overall precision for the CY 2021 environmental monitoring sampling activities was acceptable.

Accuracy provides a gauge or measure of the agreement between an observed result and the true value for an analysis. The RPD and NAD between the two results was calculated and used as an indication of the accuracy of the analyses performed (Tables 5-3 and 5-4). For this EMDAR, accuracy is evaluated using field split samples through a comparison of the prime laboratory results versus the results of an independent laboratory. The overall accuracy for CY 2021 environmental monitoring sampling activities was acceptable.

Representativeness expresses the degree to which data accurately and precisely represent a characteristic of a population, parameter variations at a sampling point, a process condition, or an environmental condition. Representativeness is a qualitative parameter that depends upon the proper design of the sampling program and proper laboratory protocols. Representativeness is satisfied through proper design of the sampling network, use of proper sampling techniques, following proper analytical procedures, and not exceeding holding times of the samples.

Representativeness was determined by assessing the combined aspects of the QA program, QC measures, and data evaluations. The sampling protocol from the RI WP QAPP was followed, and analytical procedures were conducted in accordance with the QAPP. The overall representativeness of the CY 2021 environmental monitoring sampling activities was acceptable for the media and sampling described in this EMDAR.

Comparability expresses the confidence with which one dataset can be compared with another. The extent to which analytical data will be comparable depends upon the similarity of sampling and analytical methods, as well as sample-to-sample and historical comparability. Standardized and consistent procedures used to obtain analytical data are expected to provide comparable results. Some sample media (e.g., radiological monitoring) have values that are primarily useful in the present, thus the comparison to historical data is not as relevant. The overall comparability of the applicable environmental monitoring sampling data met the project DQOs.

Completeness is a measure of the amount of valid data obtained from a measurement system compared to the amount expected to be obtained under normal conditions. Laboratories are expected to provide data meeting QC acceptance criteria for all samples tested. For the CY 2021 environmental monitoring sampling activities, the data completeness was 100 percent (i.e., FUSRAP DQO for completeness is 90 percent).

Sensitivity is the determination of minimum detectable concentration (MDC) values that allows the investigation to assess the relative confidence that can be placed in an analytical result in comparison to the magnitude or level of analyte concentration observed. For this report, MDC is a term generically used to represent the minimum detectable activity (MDA) for radiological analytes. The closer a measured value to the MDC, the lower the established confidence and the greater the variation in the measured value. Project sensitivity goals were expressed as quantitation level goals in the RI WP QAPP. These levels were achieved or exceeded throughout the analytical process.

The MDC is reported for each result obtained by laboratory analysis. These very low MDCs are achieved using alpha spectroscopy. Variations in MDCs for the same radiological analyte reflect variability in the detection efficiencies and conversion factors due to factors such as individual sample aliquot, sample density, and variations in analyte background radioactivity for alpha spectroscopy at the laboratory. To complete the data evaluation (i.e., precision, accuracy, representativeness, and comparability), analytical results that exceed the MDC of the analyte are desired.

5.9 DATA QUALITY ASSESSMENT SUMMARY

The overall quality of the data meets the established project objectives. Through proper implementation of the project data review, evaluation, validation, and assessment process, project information has been determined to be acceptable for use.

Data, as presented, have been qualified as usable, but estimated when necessary. Data that have been estimated have concentrations/activities that are below the quantitation limit or are indicative of accuracy, precision, or sensitivity being less than desired but adequate for interpretation.

These data can withstand scientific scrutiny, are appropriate for the intended purpose, and are technically defensible. Confidence in the presented environmental information has been established, allowing the information to be utilized for the project objectives and providing data for future needs.

5.10 RESULTS FOR PARENT SAMPLES AND THE ASSOCIATED DUPLICATE AND SPLIT SAMPLES

A summary of the QA parent sample results and associated duplicate and/or split sample results are presented in Tables 5-5 and 5-6.

Table 5-5. Radiological Parent Samples and Associated Duplicate and Split Samples for CY 2021 – Surface Water

Surface Water Sample Name ^a	U-234 ^{b,c}				U-235 ^{b,c}				U-238 ^{b,c}			
	Result	Error	MDC	VQ	Result	Error	MDC	VQ	Result	Error	MDC	VQ
IAAP239996	0.57	0.40	0.35	J	0.00	0.23	0.60	UJ	0.52	0.40	0.48	J
IAAP239996-1	0.48	0.41	0.55	UJ	-0.02	0.19	0.50	UJ	0.46	0.40	0.56	UJ
IAAP239996-2	0.63	0.22	0.14	=	0.01	0.04	0.13	UJ	0.40	0.17	0.09	=

^a Samples ending in “-1” are duplicate samples. Samples ending in “-2” are split samples.

^b Results are expressed in pCi/L.

^c Results from alpha spectroscopy.

VQ symbols indicate: “=” for positively identified results, “U” for not detected, “J” for analyte was identified as estimated quantity, and “UJ” for analyte was not detected and had QC deficiencies.

**Table 5-6. Radiological Parent Samples and Associated Duplicate and Split Samples for
 CY 2021 – Sediment**

Sediment Sample Name ^a	U-234 ^{b,c}				U-235 ^{b,c}				U-238 ^{b,c}			
	Result	Error	MDC	VQ	Result	Error	MDC	VQ	Result	Error	MDC	VQ
IAAP248697	0.52	0.23	0.11	=	0.03	0.08	0.22	UJ	0.47	0.22	0.13	=
IAAP248697-1	0.73	0.29	0.14	=	0.03	0.09	0.23	UJ	0.78	0.30	0.14	=
IAAP248697-2	0.40	0.12	0.05	=	0.01	0.03	0.06	UJ	0.44	0.12	0.02	=

^a Samples ending in “-1” are duplicate samples. Samples ending in “-2” are split samples.

^b Results are expressed in pCi/g.

^c Results from alpha spectroscopy.

VQ symbols indicate: “=” for positively identified results, “U” for not detected, “J” for analyte was identified as estimated quantity, and “UJ” for analyte was not detected and had QC deficiencies.

6.0 REFERENCES

- DOD 2000. U.S. Department of Defense, U.S. Department of Energy, U.S. Environmental Protection Agency, and U.S. Nuclear Regulatory Commission. *Multi-Agency Radiation Survey and Site Investigation Manual (MARSSIM)*. NUREG-1575. EPA 402-R-97-016. August 2000.
- DOD and DOE 2017. U.S. Department of Defense and U.S. Department of Energy. *Department of Defense (DoD)/Department of Energy (DOE) Consolidated Quality Systems Manual (QSM) for Environmental Laboratories*. DOD Quality Systems Manual Version 5.1 and DOE Quality Systems for Analytical Services Version 3.1. 2017.
- Leidos 2015a. Leidos, Inc. *Control of Nonconforming Items*. Environmental Science & Engineering Operation. Standard Operating Procedure. ESE A15.1. Revision 0. January 31, 2015.
- Leidos 2015b. Leidos, Inc. *Equipment Decontamination*. Environmental Science & Engineering Operation. Standard Operating Procedure. FTP-400. Revision 0. January 31, 2015.
- Leidos 2015c. Leidos, Inc. *Data Verification and Validation*. Environmental Science & Engineering Operation. Standard Operating Procedure. ESE DM-05. Revision A. January 31, 2015.
- R8I Cabrera Remediation & Construction, LLC 2021a. *Area E Pre-Design Investigation Report for the Iowa Army Ammunition Plant Operable Unit 8*. Revision 0. April 2021.
- R8I Cabrera Remediation & Construction, LLC 2021b. *Area E Remedial Design/Remedial Action Work Plan Iowa Army Ammunition Plant Operable Unit 8*. Revision 0. September 2021.
- USACE 1997. U.S. Army Corps of Engineers. *Chemical Quality Assurance for Hazardous, Toxic, and Radioactive Waste (HTRW) Projects*. Engineer Manual, EM-200-1-6. October 1997.
- USACE 1998. U.S. Army Corps of Engineers. *Engineering and Design – Chemical Data Quality Management for Hazardous, Toxic, and Radioactive Waste Activities*. Engineer Regulation, ER-1110-1-263. April 1998.
- USACE 1999. U.S. Army Corps of Engineers. *FUSRAP Laboratory Data Management Process for the St. Louis Site*. St. Louis, Missouri. June 1999.
- USACE 2001. U.S. Army Corps of Engineers. *Requirements for the Preparation of Sampling and Analysis Plans*. Engineer Manual, EM 200-1-3. February 1, 2001.
- USACE 2007. U.S. Army Corps of Engineers St. Louis District. *Remedial Investigation Work Plan for Line 1, Firing Sites Area, Yards C, G, and L, Warehouse 3-01 and the West Burn Pads Area South of the Road*. Final. June 2007.
- USACE 2008. U.S. Army Corps of Engineers St. Louis District. *Iowa Army Ammunition Plant FUSRAP Remedial Investigation Report for Firing Sites Area, Yards C, E, F, G, and L, Warehouse 3-01 and Area West of Line 5B*. Middletown, Iowa. Final. October 8, 2008.
- USACE 2011. U.S. Army Corps of Engineers St. Louis District. *FUSRAP Record of Decision for the Iowa Army Ammunition Plant*. Middletown, Iowa. Final. September 2011.
- USACE 2013. U.S. Army Corps of Engineers St. Louis District. *Laboratory Quality Assurance Plan for the FUSRAP St. Louis Radiological Laboratory*. Berkeley, Missouri. Revision 8. April 2013.

- USACE 2021a. U.S. Army Corps of Engineers St. Louis District. *Iowa Army Ammunition Plant Operable Unit 8 Annual Environmental Monitoring Data and Analysis Report for Calendar Year 2020*. Middletown, Iowa. Revision 0. July 2021.
- USACE 2021b. U.S. Army Corps of Engineers St. Louis District. *Post-Remedial Action Report and Final Status Survey Evaluation for the Firing Site 12 Area East Survey Units at the Iowa Army Ammunition Plant*. Middletown, Iowa. Revision 0. August 18, 2021.
- USACE 2021c. U.S. Army Corps of Engineers St. Louis District. *Interim Change to the Final Status Survey Plan for the FUSRAP Areas at the Iowa Army Ammunition Plant*, Final (dated February 2013). January 29, 2021.
- USEPA 1989. U.S. Environmental Protection Agency, Office of Radiation Programs, Washington, D.C. *A Guide for Determining Compliance with the Clean Air Act Standards for Radionuclide Emissions from NRC-Licensed and Non-DOE Federal Facilities*. EPA 520/1-89-002. October 1989.
- USEPA 1991. U.S. Environmental Protection Agency. *Interim Guidelines and Specifications for Preparing Quality Assurance Project Plans*. QAMS-005/80. 1991.
- USEPA 1993. U.S. Environmental Protection Agency. *Test Methods for Evaluating Solid Waste, Physical/Chemical Methods*. SW-846. Third Edition. Revision 1. Updates 1, 2, and 3. 1993.
- USEPA 1994. U.S. Environmental Protection Agency. *EPA Requirements for Quality Assurance Project Plans for Environmental Data Operations*. EPA QA/R-5. January 1994.
- USEPA 2015. U.S. Environmental Protection Agency. “Rad NESHAPs Models.” Radiation Protection. <http://www.epa.gov/radiation/neshaps/models.html>. Accessed September 2015.
- USEPA 2020. U.S. Environmental Protection Agency. CAP88-PC Version 4.1 Computer Code. March 2020.
- 10 CFR 20. *Standards for Protection Against Radiation*.
- 40 CFR 61, Appendix D. *Methods for Estimating Radionuclide Emissions*.
- 40 CFR 61, Appendix E. *Compliance Procedures Methods for Determining Compliance with Subpart I*.
- 40 CFR 61.103. *Determining Compliance*.

FIGURES

THIS PAGE INTENTIONALLY LEFT BLANK

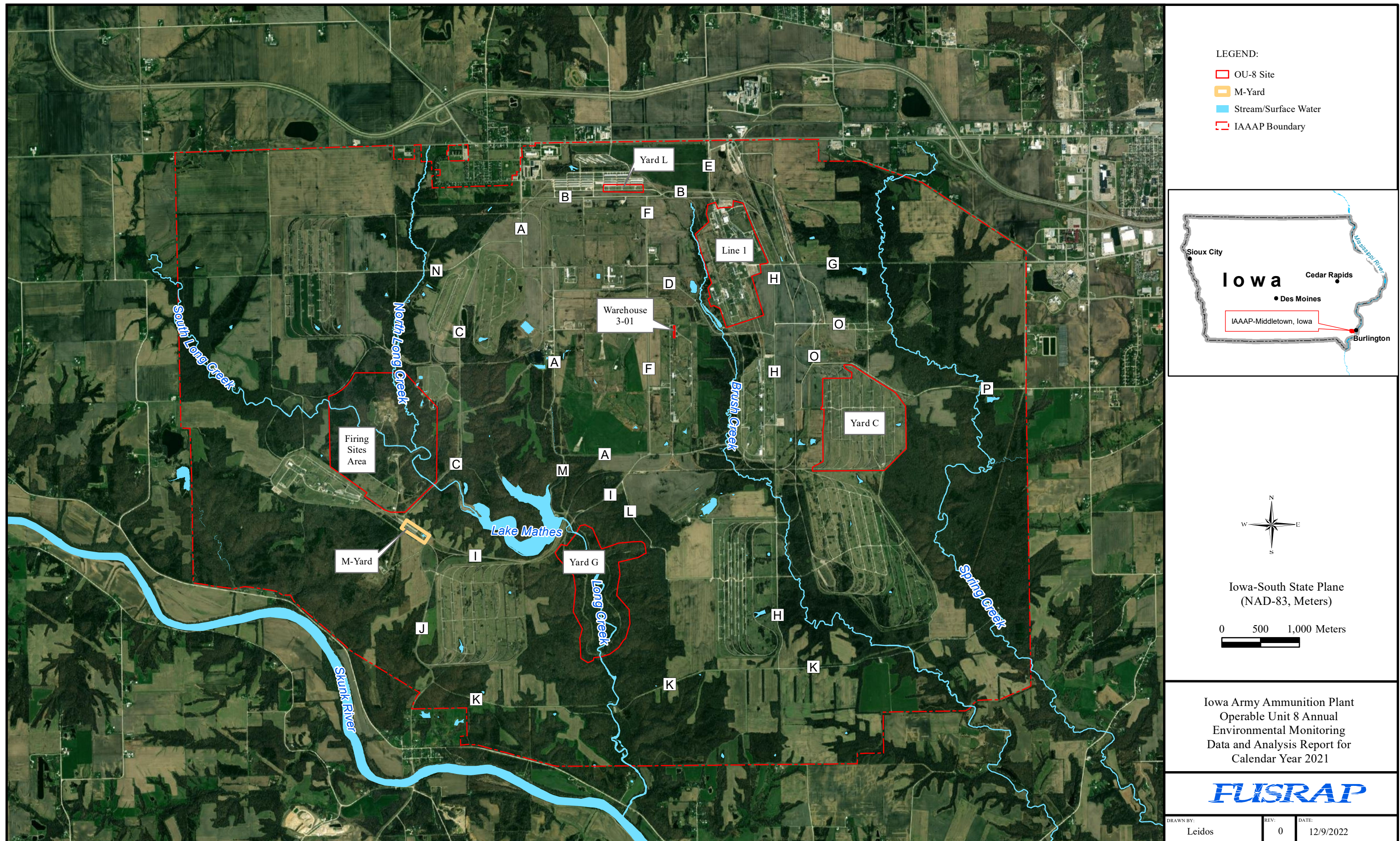


Figure 1-1. FUSRAP Areas at IAAAP

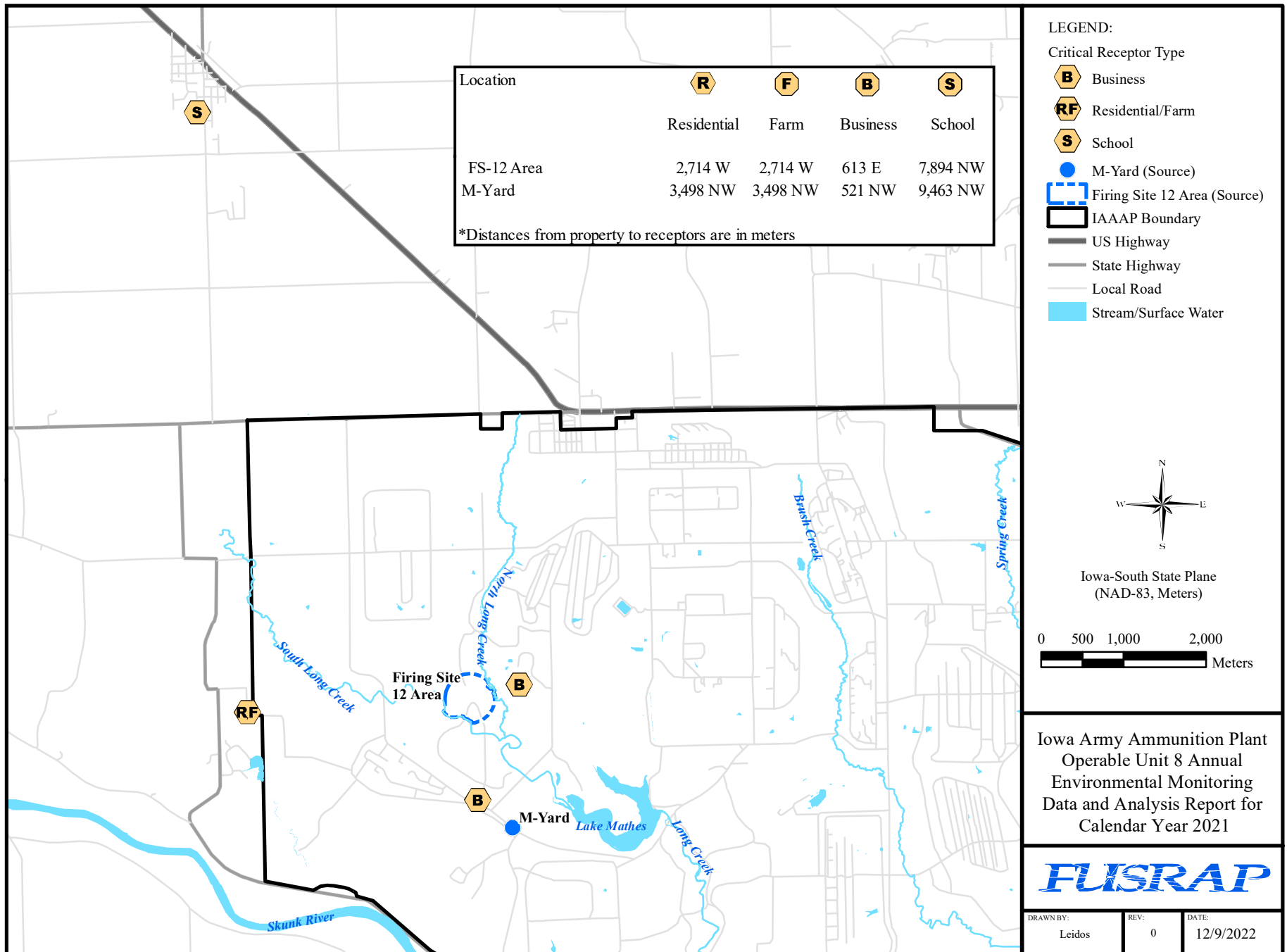
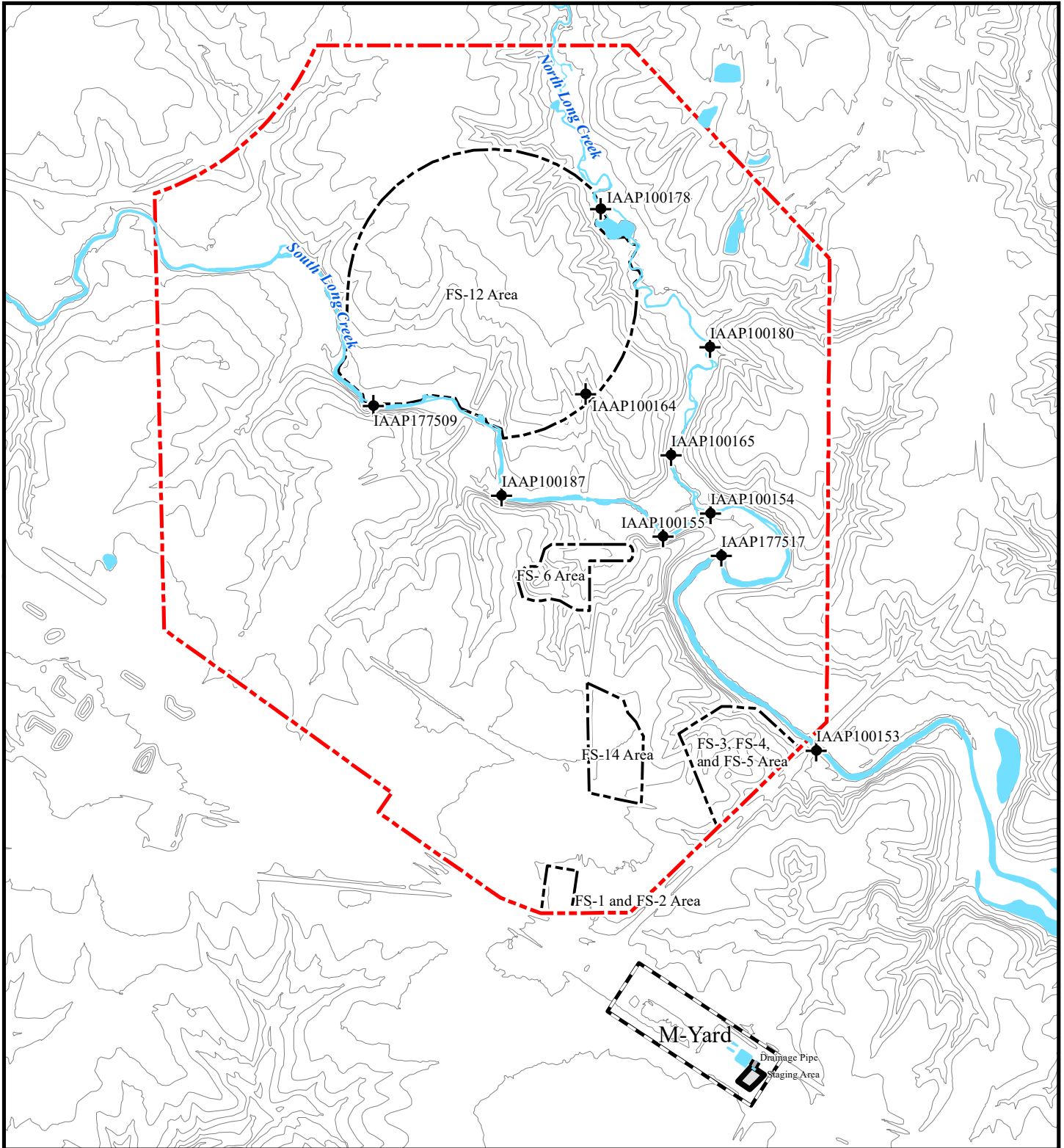
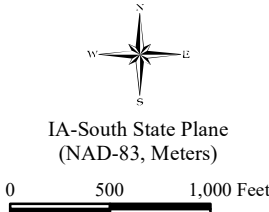


Figure 3-1. IAAAP Firing Sites Area Receptors



LEGEND:

- Environmental Monitoring Sample Locations
- Firing Sites Area
- Firing Site Boundaries
- M-Yard
- M-Yard Staging Area
- Drainage Pipe
- 10ft Contour
- Stream/Surface Water



Iowa Army Ammunition Plant
Operable Unit 8 Annual
Environmental Monitoring
Data and Analysis Report for
Calendar Year 2021



DRAWN BY: Leidos	REV: 0	DATE: 12/9/2022
---------------------	-----------	--------------------

Figure 4-1. Surface Water and Sediment Monitoring Locations

APPENDIX A

CALCULATED EMISSION RATES FROM IAAAP OPERABLE UNIT 8 AREAS

THIS PAGE INTENTIONALLY LEFT BLANK

Table A-1. Total Days for CY 2021

Location	Open Date	Close Date	Total Days
FS-12 Area SUs (Areas E, I, and K)	04/21/2021	11/19/2021	213
FS-12 Area Pre-Sorting Pile	04/21/2021	11/05/2021	199
FS-12 Area Post-Sorting Contaminated Pile	1/1/2021	4/20/2021	325
	4/30/2021	11/30/2021	
M-Yard Post-Sorting Contaminated Pile (Soil was not stored at M-Yard between shipping events)	1/5/2021	1/6/2021	12
	4/19/2021	4/20/2021	
	6/7/2021	6/8/2021	
	7/5/2021	7/6/2021	
	10/13/2021	10/14/2021	
	11/29/2021	11/30/2021	

Table A-2. FS-12 Area Average Surface Area and Flow Rate Per Location for CY 2021

Location	Surface Area (m ²)	Total Days ^b	Surface Area × Total Days	Average Surface Area/Year (A) ^c (m ²)	Diameter of Stack D = (1.3 A) ^{1/2} (m)	Flow Rate ^d $F = V \pi [(D)^2 / 4]^*60$ (m ³ /minute)
FS-12 Area						
SUs (Areas E, I, and K)	15,492	213	3,299,796	10,487	117	2.7E+06
Pre-Sorting Pile ^a	2,000	199	398,000			
Post-Sorting Contaminated Pile ^a	400	325	130,000			
Total			3,827,796			
M-Yard						
Post-Sorting Contaminated Pile ^a	400	12	4,800	13	4	3.42E+03

^a No data identifying the area associated with the pre- and post-sorting piles existed. Therefore, the pre-sorting contaminated pile area was set at 2,000 m² (conservative value selected based on previous years' area values). The post-sorting contaminated piles at both the FS-12 Area and M-Yard were set at 400 m², which corresponds to 20 percent of the pre-sorting pile. The average volume ratio of post-sorting contaminated pile to pre-sorting pile in 2021 was 14 percent.

^b Total days were based on the dates in 2021 in which potential wind erosion occurred, as listed in Table A-1.

^c Average surface area/year (A) = $[\Sigma(\text{surface area} \times \text{total days})]/365$

^d V = 4.252 m per second

Table A-3. Airborne Radioactive Particulate Emissions Based on Perimeter Air Particulate Samples

Radionuclide	Gross Alpha Concentration (μCi/cm ³)	Activity Fraction ^a	Emission Concentration (μCi/cm ³) ^b	Emission Rate (Ci/year) ^c
FS-12 Area				
U-238	8.48E-15	0.9014	7.6E-15	1.1E-02
U-235	8.48E-15	0.0145	1.2E-16	1.8E-04
U-234	8.48E-15	0.0840	7.1E-16	1.0E-03
M-Yard				
U-238	3.81E-15	0.9014	3.4E-15	6.2E-06
U-235	3.81E-15	0.0145	5.5E-17	9.9E-08
U-234	3.81E-15	0.0840	3.2E-16	5.8E-07

^a As listed in the ROD (USACE 2011).

^b Emission concentration is equal to the activity fraction multiplied by the gross alpha airborne particulate concentrations.

^c Emission rate is based on a 365-day period calculated flow rate (as presented in Table A-2) for each site as determined from the average annual wind speed (i.e., 4.252 m per second) and calculated site area (as presented in Table A-2). (Note: 1 mL = 1 cm³.)

THIS PAGE INTENTIONALLY LEFT BLANK

APPENDIX B
CALENDAR YEAR 2021 AIR MONITORING DATA

THIS PAGE INTENTIONALLY LEFT BLANK

Table B-1. CY 2021 IAAAP Air Particulate Sample Summary Table

Collect Start Date	Collect End Date	Area	Gross Alpha Concentration ($\mu\text{Ci}/\text{mL}$)
4/9/2021	4/9/2021	Baseline FS-12	-1.73E-14
4/20/2021	4/30/2021	FS-12 North	8.20E-16
4/20/2021	4/30/2021	FS-12 South	2.36E-15
5/4/2021	5/4/2021	FS-12 North	1.03E-15
5/4/2021	5/4/2021	FS-12 South	1.48E-15
6/1/2021	6/23/2021	FS-12 North	1.53E-15
6/1/2021	6/23/2021	FS-12 South	1.71E-15
6/30/2021	7/30/2021	FS-12 North	2.08E-15
6/30/2021	7/30/2021	FS-12 South	1.68E-15
8/3/2021	8/27/2021	FS-12 North	1.29E-15
8/3/2021	8/27/2021	FS-12 South	1.07E-15
9/1/2021	9/30/2021	FS-12 North	7.42E-16
9/1/2021	9/30/2021	FS-12 South	5.82E-16
10/1/2021	10/27/2021	FS-12 North	1.14E-15
10/1/2021	10/27/2021	FS-12 South	2.48E-15
11/3/2021	11/5/2021	FS-12 North	4.23E-15
11/3/2021	11/5/2021	FS-12 South	3.94E-15
4/20/2021	4/23/2021	RCA	1.18E-15
4/27/2021	4/30/2021	RCA	2.17E-15
5/4/2021	5/7/2021	RCA	7.23E-16
5/11/2021	5/14/2021	RCA	8.07E-16
5/18/2021	5/21/2021	RCA	2.01E-14
5/25/2021	5/28/2021	RCA	9.27E-15
6/1/2021	6/4/2021	RCA	2.86E-15
6/8/2021	6/11/2021	RCA	2.07E-15
6/15/2021	6/18/2021	RCA	3.36E-15
6/22/2021	6/25/2021	RCA	3.49E-15
6/29/2021	7/2/2021	RCA	5.56E-15
07/06/2021	07/09/2021	RCA	9.04E-15
07/20/2021	07/23/2021	RCA	2.58E-15
07/22/2021	07/22/2021	RCA	1.44E-14
07/23/2021	07/23/2021	RCA	1.31E-14
07/27/2021	07/27/2021	RCA	1.04E-14
07/30/2021	07/30/2021	RCA	6.31E-15
08/03/2021	08/03/2021	RCA	1.12E-14
08/04/2021	08/04/2021	RCA	2.84E-15
08/05/2021	08/05/2021	RCA	8.86E-15
08/06/2021	08/06/2021	RCA	3.59E-15
08/10/2021	08/10/2021	RCA	4.97E-15
08/17/2021	08/17/2021	RCA	3.48E-15
08/18/2021	08/18/2021	RCA	8.69E-16
08/19/2021	08/19/2021	RCA	-3.68E-15
08/20/2021	08/20/2021	RCA	4.48E-15
08/24/2021	08/24/2021	RCA	-1.58E-14
08/26/2021	08/26/2021	RCA	-2.89E-14
08/27/2021	08/27/2021	RCA	-7.88E-15
09/01/2021	09/01/2021	RCA	-1.74E-16
09/02/2021	09/20/2021	RCA	-7.13E-15
09/07/2021	09/07/2021	RCA	1.57E-14
09/08/2021	09/08/2021	RCA	8.48E-16

Table B-1. CY 2021 IAAAP Air Particulate Sample Summary Table (Continued)

Collect Start Date	Collect End Date	Area	Gross Alpha Concentration ($\mu\text{Ci}/\text{mL}$)
09/09/2021	09/09/2021	RCA	7.98E-15
09/10/2021	09/10/2021	RCA	9.31E-16
09/14/2021	09/14/2021	RCA	1.67E-14
09/15/2021	09/15/2021	RCA	2.24E-14
09/16/2021	09/16/2021	RCA	5.21E-15
09/17/2021	09/17/2021	RCA	3.15E-15
09/22/2021	09/22/2021	RCA	1.06E-14
09/23/2021	09/23/2021	RCA	6.15E-16
09/24/2021	09/24/2021	RCA	9.58E-15
09/28/2021	09/28/2021	RCA	1.93E-14
09/29/2021	09/29/2021	RCA	9.58E-15
09/30/2021	09/30/2021	RCA	1.10E-14
10/01/2021	10/01/2021	RCA	5.88E-15
10/05/2021	10/05/2021	RCA	6.95E-15
10/06/2021	10/06/2021	RCA	1.98E-14
10/07/2021	10/06/2021	RCA	9.04E-15
10/08/2021	10/08/2021	RCA	1.14E-14
10/15/2021	10/15/2021	RCA	9.65E-16
10/19/2021	10/19/2021	RCA	7.36E-15
10/20/2021	10/20/2021	RCA	6.55E-15
10/21/2021	10/21/2021	RCA	2.84E-15
10/22/2021	10/22/2021	RCA	9.85E-15
10/27/2021	10/27/2021	RCA	2.45E-15
11/02/2021	11/02/2021	RCA	6.08E-15
11/03/2021	11/03/2021	RCA	1.99E-14
11/04/2021	11/04/2021	RCA	2.21E-14
11/05/2021	11/05/2021	RCA	2.62E-14
5/5/2021	05/05/21	S3	1.34E-14
05/06/21	5/6/21	S3	-1.27E-15
5/7/2021	5/6/21	S3	8.13E-15
05/12/21	5/12/21	S3	2.49E-15
05/13/21	5/13/21	S3	3.16E-16
05/20/21	5/20/21	S3	1.39E-14
05/21/21	5/21/21	S3	1.92E-14
05/25/21	5/25/21	S3	8.11E-15
06/01/21	06/01/21	S3	1.64E-14
06/02/21	06/02/21	S3	9.90E-15
06/03/21	06/03/21	S3	1.18E-14
06/04/21	06/04/21	S3	9.65E-15
06/8/21	06/8/21	S3	1.72E-14
06/9/21	06/9/21	S3	1.10E-14
06/10/21	06/10/21	S3	1.03E-14
06/11/21	06/11/21	S3	1.52E-14
06/15/21	06/15/21	S3	3.89E-14
06/16/21	06/16/21	S3	4.27E-15
06/17/21	06/17/21	S3	4.24E-15
06/18/21	06/18/21	S3	2.47E-14
06/22/21	06/22/21	S3	1.33E-14
06/23/21	06/23/21	S3	4.55E-15

Table B-1. CY 2021 IAAAP Air Particulate Sample Summary Table (Continued)

Collect Start Date	Collect End Date	Area	Gross Alpha Concentration (μCi/mL)
6/30/21	6/30/21	S3	5.10E-15
07/01/2021	07/01/2021	S3	1.19E-14
07/09/2021	07/09/2021	S3	1.66E-14
07/20/2021	07/20/2021	S3	1.18E-14
07/21/2021	07/21/2021	S3	9.15E-15
07/22/2021	07/22/2021	S3	3.88E-15
07/23/2021	07/23/2021	S3	1.84E-14
07/27/2021	07/27/2021	S3	2.21E-14
07/30/2021	07/30/2021	S3	7.82E-15
08/03/2021	08/03/2021	S3	2.63E-14
08/04/2021	08/04/2021	S3	2.09E-15
08/05/2021	08/05/2021	S3	-1.68E-15
08/06/2021	08/06/2021	S3	1.04E-14
08/10/2021	08/10/2021	S3	2.38E-15
08/17/2021	08/17/2021	S3	3.50E-14
08/18/2021	08/18/2021	S3	-1.39E-15
08/19/2021	08/19/2021	S3	-3.68E-15
08/20/2021	08/20/2021	S3	-1.35E-15
08/24/2021	08/24/2021	S3	-1.08E-14
08/26/2021	08/26/2021	S3	-8.02E-15
08/27/2021	08/27/2021	S3	1.62E-14
09/01/2021	09/01/2021	S3	2.84E-15
09/02/2021	09/20/2021	S3	-2.61E-15
09/07/2021	09/07/2021	S3	1.15E-14
09/08/2021	09/08/2021	S3	5.26E-15
09/09/2021	09/09/2021	S3	1.51E-14
09/10/2021	09/10/2021	S3	-1.49E-15
09/14/2021	09/14/2021	S3	1.58E-14
09/15/2021	09/15/2021	S3	2.24E-14
09/16/2021	09/16/2021	S3	1.27E-14
09/17/2021	09/17/2021	S3	1.57E-14
09/22/2021	09/22/2021	S3	9.31E-16
09/23/2021	09/23/2021	S3	1.34E-14
09/24/2021	09/24/2021	S3	9.58E-15
09/28/2021	09/28/2021	S3	1.22E-14
09/29/2021	09/29/2021	S3	2.25E-15
09/30/2021	09/30/2021	S3	1.43E-14
10/01/2021	10/01/2021	S3	1.11E-14
10/05/2021	10/05/2021	S3	8.61E-15
10/06/2021	10/06/2021	S3	2.37E-14
10/07/2021	10/06/2021	S3	6.78E-15
10/08/2021	10/08/2021	S3	5.39E-15
10/15/2021	10/15/2021	S3	-4.89E-15
10/19/2021	10/19/2021	S3	8.11E-15
10/20/2021	10/20/2021	S3	1.10E-14
10/21/2021	10/21/2021	S3	8.11E-15
10/22/2021	10/22/2021	S3	4.83E-15
10/27/2021	10/27/2021	S3	1.22E-14
11/02/2021	11/02/2021	S3	3.09E-14

Table B-1. CY 2021 IAAAP Air Particulate Sample Summary Table (Continued)

Collect Start Date	Collect End Date	Area	Gross Alpha Concentration ($\mu\text{Ci/mL}$)
11/03/2021	11/03/2021	S3	1.48E-14
11/04/2021	11/04/2021	S3	2.38E-14
11/05/2021	11/05/2021	S3	3.38E-14
---		Average Concentration FS-12	8.48E-15
01/06/21	01/08/21	M-Yard Boundary	3.06E-15
01/13/21	01/13/21	M-Yard Boundary	2.39E-15
4/20/2021	04/21/21	M-Yard Boundary	-3.52E-15
6/8/2021	06/08/21	M-Yard Boundary	4.05E-15
7/6/2021	07/06/21	M-Yard Boundary	7.07E-15
8/25/2021	08/26/21	M-Yard Boundary	-1.49E-15
10/14/2021	10/14/21	M-Yard Boundary	1.23E-14
11/30/2021	11/30/21	M-Yard Boundary	1.58E-15
---		Average Concentration M-Yard	3.81E-15

^a Negative results indicate result was less than the average background value for the instrument and are counted a zero value in the area
 Notes:

RCA - Radiation Control Area; S3 - Soil Sorting System Area

Table B-2. CY 2021 IAAAP Air Particulate Sample Laboratory Analysis Summary Table

Station Name	Sample Name	Collect Date	Analyte	Result	Error	Detection Limit	Units	VQ
FS12-South Boundary	IAAP247005	4/20/2021	Gross Alpha	3.27E-15	1.38E-15	9.76E-16	uCi/mL	=
			Gross Beta	2.05E-14	3.44E-15	2.64E-15	uCi/mL	=
FS12-South Boundary	IAAP247006	5/4/2021	Gross Alpha	7.89E-16	6.29E-16	7.35E-16	uCi/mL	J
			Gross Beta	1.33E-14	2.40E-15	1.99E-15	uCi/mL	=
FS12-South Boundary	IAAP247007	6/1/2021	Gross Alpha	1.18E-15	5.34E-16	4.00E-16	uCi/mL	=
			Gross Beta	1.16E-14	1.68E-15	1.08E-15	uCi/mL	=
FS12-South Boundary	IAAP247008	6/30/2021	Gross Alpha	1.57E-15	7.81E-16	6.16E-16	uCi/mL	=
			Gross Beta	1.52E-14	2.41E-15	1.75E-15	uCi/mL	=
FS12-South Boundary	IAAP247009	8/3/2021	Gross Alpha	1.41E-15	6.56E-16	5.02E-16	uCi/mL	=
			Gross Beta	9.14E-15	1.65E-15	1.36E-15	uCi/mL	=
FS12-South Boundary	IAAP247010	9/1/2021	Gross Alpha	8.50E-16	4.42E-16	3.73E-16	uCi/mL	J
			Gross Beta	1.58E-14	1.97E-15	1.01E-15	uCi/mL	=
FS12-South Boundary	IAAP247011	10/4/2021	Gross Alpha	1.19E-15	6.64E-16	5.93E-16	uCi/mL	J
			Gross Beta	1.77E-14	2.53E-15	1.61E-15	uCi/mL	=
FS12-South Boundary	IAAP247012	11/2/2021	Gross Alpha	5.08E-15	2.64E-15	2.23E-15	uCi/mL	J
			Gross Beta	3.91E-14	7.18E-15	6.02E-15	uCi/mL	=
FS12-North Boundary Baseline	IAAP247013	4/9/2021	Gross Alpha	3.73E-15	3.98E-15	5.57E-15	uCi/mL	UJ
			Gross Beta	8.93E-14	1.72E-14	1.51E-14	uCi/mL	=
FS12-North Boundary	IAAP247014	4/20/2021	Gross Alpha	4.49E-15	1.65E-15	1.01E-15	uCi/mL	=
			Gross Beta	3.29E-14	4.54E-15	2.74E-15	uCi/mL	=
FS12-North Boundary	IAAP247015	5/4/2021	Gross Alpha	3.14E-15	1.17E-15	7.31E-16	uCi/mL	=
			Gross Beta	1.63E-14	2.66E-15	1.98E-15	uCi/mL	=
FS12-North Boundary	IAAP247016	6/1/2021	Gross Alpha	1.83E-15	6.60E-16	4.00E-16	uCi/mL	=
			Gross Beta	1.60E-14	2.04E-15	1.08E-15	uCi/mL	=
FS12-North Boundary	IAAP247017	6/30/2021	Gross Alpha	1.04E-15	6.56E-16	6.46E-16	uCi/mL	J
			Gross Beta	1.51E-14	2.40E-15	1.75E-15	uCi/mL	=
FS12-North Boundary	IAAP247018	8/3/2021	Gross Alpha	2.62E-15	8.83E-16	5.01E-16	uCi/mL	=
			Gross Beta	2.58E-14	3.01E-15	1.35E-15	uCi/mL	=
FS12-North Boundary	IAAP247019	9/1/2021	Gross Alpha	1.58E-15	5.90E-16	3.69E-16	uCi/mL	=
			Gross Beta	2.12E-14	2.39E-15	9.98E-16	uCi/mL	=
FS12-North Boundary	IAAP247020	10/1/2021	Gross Alpha	2.48E-15	9.39E-16	5.96E-16	uCi/mL	=
			Gross Beta	2.48E-14	3.11E-15	1.61E-15	uCi/mL	=
FS12-North Boundary	IAAP247021	11/3/2021	Gross Alpha	3.55E-15	2.23E-15	2.20E-15	uCi/mL	J
			Gross Beta	4.89E-14	7.98E-15	5.96E-15	uCi/mL	=

Notes:

Negative results are less than the laboratory system's background level.

VQs:

- = - Indicates that the data met all QA/QC requirements, and that the parameter has been positively identified and the associated concentration value is accurate.
- J - Indicates that the parameter was positively identified; the associated numerical value is the approximate concentration of the parameter in the sample.
- U - Indicates that the data met all QA/QC requirements, and that the parameter was analyzed for but was not detected above the reported sample quantitation limit.
- UJ - Indicates that the parameter was not detected above the reported sample quantitation limit and may or may not represent the actual limit of quantitation necessary to accurately and precisely measure the analyte in the sample. However, the reported quantitation limit is approximate.

THIS PAGE INTENTIONALLY LEFT BLANK

APPENDIX C

CAP88-PC OUTPUT REPORT FOR IAAAP OPERABLE UNIT 8 AREAS

THIS PAGE INTENTIONALLY LEFT BLANK

D O S E A N D R I S K S U M M A R I E S

Non-Radon Individual Assessment

Mon Sep 26 12:37:34 2022

Facility: FS-12 IAAAP
Address: Iowa Army Ammunition Plant
City: Middletown
State: IA Zip: 52638

Source Category: Area
Source Type: Area
Emission Year: 2021
DOSE Age Group: Adult

Comments: FS-12 Emissions
FS-12 Emissions

Dataset Name: FS-12 Revision 1
Dataset Date: Sep 26, 2022 12:37 PM
Wind File: C:\Users\finkenbinec\Documents\CAP88\Wind
Files\14923.WND

ORGAN DOSE EQUIVALENT SUMMARY

Organ	Selected Individual (mrem)
Adrenals	2.87E-02
UB_Wall	3.02E-02
Bone_Sur	4.16E-01
Brain	2.94E-02
Breasts	3.42E-02
St_Wall	3.02E-02
SI_Wall	2.95E-02
ULI_Wall	3.19E-02
LLI_Wall	3.67E-02
Kidneys	1.52E-01
Liver	6.77E-02
Muscle	3.35E-02
Ovaries	2.90E-02
Pancreas	2.84E-02
R_Marrow	5.72E-02
Skin	5.48E+00
Spleen	3.02E-02
Testes	3.43E-02
Thymus	2.98E-02
Thyroid	3.16E-02
GB_Wall	2.87E-02
Ht_Wall	2.96E-02
Uterus	2.91E-02
ET_Reg	3.55E-01
Lung	1.42E+00
Effectiv	2.62E-01

PATHWAY EFFECTIVE DOSE EQUIVALENT SUMMARY

Pathway	Selected Individual (mrem)
INGESTION	6.06E-03
INHALATION	1.82E-01
AIR IMMERSION	5.03E-08
GROUND SURFACE	7.31E-02
INTERNAL	1.88E-01
EXTERNAL	7.31E-02
TOTAL	2.62E-01

NUCLIDE EFFECTIVE DOSE EQUIVALENT SUMMARY

Nuclide	Selected Individual (mrem)
U-234	1.84E-02
Th-230	1.08E-08
Ra-226	1.31E-09
Rn-222	7.28E-11
Po-218	1.30E-15
Pb-214	4.75E-08
At-218	4.89E-15
Bi-214	2.78E-07
Rn-218	2.83E-17
Po-214	1.54E-11
Tl-210	1.08E-10
Pb-210	1.82E-10
Bi-210	2.94E-09
Hg-206	2.37E-16
Po-210	7.55E-13
Tl-206	6.86E-15
U-235	4.36E-03
Th-231	1.45E-04
Pa-231	2.41E-07
Ac-227	8.08E-10
Th-227	3.86E-07
Fr-223	3.63E-09
Ra-223	4.31E-07
Rn-219	1.87E-07
At-219	0.00E+00
Bi-215	8.40E-13
Po-215	5.70E-10
Pb-211	3.67E-07
Bi-211	1.51E-07
Tl-207	1.90E-07
Po-211	7.27E-11
U-238	1.67E-01
Th-234	4.77E-03
Pa-234m	6.53E-02
Pa-234	1.29E-03
TOTAL	2.62E-01

Mon Sep 26 12:37:34 2022

SUMMARY
Page 3

CANCER RISK SUMMARY

Cancer	Selected Individual Total Lifetime Fatal Cancer Risk
Esophagu	2.63E-10
Stomach	9.25E-10
Colon	2.99E-09
Liver	9.05E-10
LUNG	1.93E-07
Bone	4.51E-10
Skin	5.46E-09
Breast	1.15E-09
Ovary	3.40E-10
Bladder	6.41E-10
Kidneys	8.29E-10
Thyroid	7.77E-11
Leukemia	1.20E-09
Residual	3.36E-09
Total	2.12E-07
TOTAL	2.12E-07

PATHWAY RISK SUMMARY

Pathway	Selected Individual Total Lifetime Fatal Cancer Risk
INGESTION	2.05E-09
INHALATION	1.94E-07
AIR IMMERSION	2.67E-14
GROUND SURFACE	1.55E-08
INTERNAL	1.96E-07
EXTERNAL	1.55E-08
TOTAL	2.12E-07

Mon Sep 26 12:37:34 2022

SUMMARY
Page 4

NUCLIDE RISK SUMMARY

Nuclide	Selected Individual Total Lifetime Fatal Cancer Risk
U-234	1.93E-08
Th-230	4.57E-15
Ra-226	7.11E-16
Rn-222	3.97E-17
Po-218	5.81E-22
Pb-214	2.54E-14
At-218	6.03E-22
Bi-214	1.47E-13
Rn-218	1.55E-23
Po-214	8.45E-18
Tl-210	5.79E-17
Pb-210	8.15E-17
Bi-210	3.26E-16
Hg-206	1.05E-22
Po-210	4.14E-19
Tl-206	7.71E-22
U-235	3.84E-09
Th-231	6.63E-11
Pa-231	1.26E-13
Ac-227	3.02E-16
Th-227	2.09E-13
Fr-223	1.35E-15
Ra-223	2.33E-13
Rn-219	1.02E-13
At-219	0.00E+00
Bi-215	3.75E-19
Po-215	3.13E-16
Pb-211	1.31E-13
Bi-211	8.25E-14
Tl-207	2.44E-14
Po-211	3.98E-17
U-238	1.74E-07
Th-234	2.47E-09
Pa-234m	1.14E-08
Pa-234	6.99E-10
TOTAL	2.12E-07

INDIVIDUAL EFFECTIVE DOSE EQUIVALENT (mrem)
 (All Radionuclides and Pathways)

Direction	Distance (m)			
	613	2714	7894	
N	2.6E-01	2.3E-02	7.9E-03	
NNW	1.0E-01	1.1E-02	5.7E-03	
NW	7.9E-02	9.7E-03	5.3E-03	School
WNW	1.5E-01	1.4E-02	6.2E-03	
W	2.4E-01	2.1E-02	7.5E-03	Residence and Farm
WSW	1.1E-01	1.2E-02	5.8E-03	
SW	5.8E-02	8.3E-03	5.1E-03	
SSW	4.3E-02	7.2E-03	4.9E-03	
S	7.2E-02	9.4E-03	5.3E-03	
SSE	5.1E-02	7.9E-03	5.0E-03	
SE	6.5E-02	9.0E-03	5.3E-03	
ESE	1.1E-01	1.2E-02	5.9E-03	
E	1.9E-01	1.8E-02	6.9E-03	Business
ENE	2.2E-01	2.0E-02	7.3E-03	
NE	1.6E-01	1.5E-02	6.4E-03	
NNE	1.4E-01	1.4E-02	6.2E-03	

Note: Highlighted EDE values (in mrem) are applicable to the critical receptors as defined in Section 3.3.4 of this report taking into account the distance and direction from the applicable site to each receptor. The highlighted value assumes 100 percent occupancy.

Thu Apr 28 14:01:05 2022

SUMMARY
 Page 6

INDIVIDUAL LIFETIME RISK (deaths)
 (All Radionuclides and Pathways)

Direction	Distance (m)		
	613	2714	7894
N	2.1E-07	1.6E-08	4.1E-09
NNW	8.0E-08	6.9E-09	2.5E-09
NW	6.2E-08	5.6E-09	2.2E-09
WNW	1.2E-07	9.3E-09	2.9E-09
W	2.0E-07	1.5E-08	3.9E-09
WSW	9.1E-08	7.7E-09	2.6E-09
SW	4.5E-08	4.5E-09	2.0E-09
SSW	3.3E-08	3.7E-09	1.9E-09
S	5.6E-08	5.4E-09	2.2E-09
SSE	4.0E-08	4.2E-09	2.0E-09
SE	5.1E-08	5.1E-09	2.2E-09
ESE	8.7E-08	7.6E-09	2.6E-09
E	1.5E-07	1.2E-08	3.4E-09
ENE	1.8E-07	1.4E-08	3.7E-09
NE	1.3E-07	1.0E-08	3.0E-09
NNE	1.2E-07	9.3E-09	2.9E-09

D O S E A N D R I S K S U M M A R I E S

Non-Radon Individual Assessment
Thu Apr 28 14:24:46 2022

Facility: M-Yard IAAAP
Address: Iowa Army Ammunition Plant
City: Middletown
State: IA Zip: 52638

Source Category: Area
Source Type: Area
Emission Year: 2021
DOSE Age Group: Adult

Comments: M-Yard Emissions
M-Yard Emissions

Dataset Name: M-Yard IAAAP 202
Dataset Date: Apr 28, 2022 02:24 PM
Wind File: C:\Users\finkenbinec\Documents\CAP88\Wind
Files\14923.WND

Thu Apr 28 14:24:46 2022

SUMMARY
 Page 1

ORGAN DOSE EQUIVALENT SUMMARY

Organ	Selected Individual (mrem)
Adrenals	1.29E-05
UB_Wall	1.31E-05
Bone_Sur	3.17E-04
Brain	1.30E-05
Breasts	1.43E-05
St_Wall	1.32E-05
SI_Wall	1.33E-05
ULI_Wall	1.49E-05
LLI_Wall	1.84E-05
Kidneys	1.16E-04
Liver	4.47E-05
Muscle	1.39E-05
Ovaries	1.30E-05
Pancreas	1.29E-05
R_Marrow	3.45E-05
Skin	4.06E-04
Spleen	1.31E-05
Testes	1.41E-05
Thymus	1.31E-05
Thyroid	1.34E-05
GB_Wall	1.29E-05
Ht_Wall	1.30E-05
Uterus	1.30E-05
ET_Reg	2.98E-04
Lung	1.27E-03
Effectiv	1.76E-04

PATHWAY EFFECTIVE DOSE EQUIVALENT SUMMARY

Pathway	Selected Individual (mrem)
INGESTION	4.89E-06
INHALATION	1.65E-04
AIR IMMERSION	3.88E-11
GROUND SURFACE	6.53E-06
INTERNAL	1.70E-04
EXTERNAL	6.53E-06
TOTAL	1.76E-04

Thu Apr 28 14:24:46 2022

SUMMARY
Page 2

NUCLIDE EFFECTIVE DOSE EQUIVALENT SUMMARY

Nuclide	Selected Individual (mrem)
U-234	1.56E-04
Th-230	9.01E-11
Ra-226	1.10E-11
Rn-222	6.10E-13
Po-218	1.09E-17
Pb-214	3.98E-10
At-218	4.10E-17
Bi-214	2.33E-09
Rn-218	2.37E-19
Po-214	1.29E-13
Tl-210	9.08E-13
Pb-210	1.52E-12
Bi-210	2.46E-11
Hg-206	1.99E-18
Po-210	6.32E-15
Tl-206	5.75E-17
U-235	3.27E-06
Th-231	1.08E-07
Pa-231	1.79E-10
Ac-227	6.00E-13
Th-227	2.87E-10
Fr-223	2.70E-12
Ra-223	3.20E-10
Rn-219	1.39E-10
At-219	0.00E+00
Bi-215	6.25E-16
Po-215	4.24E-13
Pb-211	2.72E-10
Bi-211	1.12E-10
Tl-207	1.41E-10
Po-211	5.40E-14
U-238	1.21E-05
Th-234	3.40E-07
Pa-234m	4.65E-06
Pa-234	9.17E-08
TOTAL	1.76E-04

Thu Apr 28 14:24:46 2022

SUMMARY
Page 3

CANCER RISK SUMMARY

Cancer	Selected Individual Total Lifetime Fatal Cancer Risk
Esophagu	1.01E-13
Stomach	2.87E-13
Colon	1.25E-12
Liver	5.75E-13
LUNG	1.75E-10
Bone	3.48E-13
Skin	4.00E-13
Breast	2.72E-13
Ovary	1.23E-13
Bladder	2.43E-13
Kidneys	6.34E-13
Thyroid	2.32E-14
Leukemia	2.28E-13
Residual	1.02E-12
Total	1.80E-10
TOTAL	1.80E-10

PATHWAY RISK SUMMARY

Pathway	Selected Individual Total Lifetime Fatal Cancer Risk
INGESTION	1.64E-12
INHALATION	1.77E-10
AIR IMMERSION	2.05E-17
GROUND SURFACE	1.76E-12
INTERNAL	1.79E-10
EXTERNAL	1.76E-12
TOTAL	1.80E-10

Thu Apr 28 14:24:46 2022

SUMMARY
Page 4

NUCLIDE RISK SUMMARY

Nuclide	Selected Individual Total Lifetime Fatal Cancer Risk
U-234	1.64E-10
Th-230	3.82E-17
Ra-226	5.95E-18
Rn-222	3.33E-19
Po-218	4.87E-24
Pb-214	2.13E-16
At-218	5.05E-24
Bi-214	1.23E-15
Rn-218	1.30E-25
Po-214	7.08E-20
Tl-210	4.85E-19
Pb-210	6.82E-19
Bi-210	2.73E-18
Hg-206	8.81E-25
Po-210	3.47E-21
Tl-206	6.46E-24
U-235	2.88E-12
Th-231	4.93E-14
Pa-231	9.33E-17
Ac-227	2.24E-19
Th-227	1.55E-16
Fr-223	1.01E-18
Ra-223	1.73E-16
Rn-219	7.59E-17
At-219	0.00E+00
Bi-215	2.79E-22
Po-215	2.32E-19
Pb-211	9.74E-17
Bi-211	6.13E-17
Tl-207	1.81E-17
Po-211	2.96E-20
U-238	1.25E-11
Th-234	1.76E-13
Pa-234m	8.14E-13
Pa-234	4.98E-14
TOTAL	1.80E-10

INDIVIDUAL EFFECTIVE DOSE EQUIVALENT (mrem)
 (All Radionuclides and Pathways)

Direction	Distance (m)			
	521	3498	9463	
N	1.8E-04	9.2E-06	4.6E-06	
NNW	6.8E-05	5.6E-06	3.9E-06	
NW	5.3E-05	5.1E-06	3.8E-06	Business; Residence and Farm; School
WNW	9.8E-05	6.6E-06	4.1E-06	
W	1.7E-04	8.8E-06	4.5E-06	
WSW	7.7E-05	5.9E-06	3.9E-06	
SW	3.9E-05	4.7E-06	3.7E-06	
SSW	2.9E-05	4.3E-06	3.6E-06	
S	4.8E-05	5.0E-06	3.8E-06	
SSE	3.5E-05	4.6E-06	3.7E-06	
SE	4.4E-05	4.9E-06	3.8E-06	
ESE	7.3E-05	5.9E-06	4.0E-06	
E	1.3E-04	7.7E-06	4.3E-06	
ENE	1.5E-04	8.4E-06	4.4E-06	
NE	1.1E-04	6.8E-06	4.1E-06	
NNE	9.7E-05	6.5E-06	4.1E-06	

Note: Highlighted EDE values (in mrem) are applicable to the critical receptors as defined in Section 3.3.4 of this report taking into account the distance and direction from the applicable site to each receptor. The highlighted value assumes 100 percent occupancy.

Thu Apr 28 14:24:46 2022

SUMMARY
 Page 6

INDIVIDUAL LIFETIME RISK (deaths)
 (All Radionuclides and Pathways)

	Distance (m)		
Direction	521	3498	9463
N	1.8E-10	7.1E-12	2.4E-12
NNW	6.8E-11	3.4E-12	1.6E-12
NW	5.3E-11	2.9E-12	1.5E-12
WNW	1.0E-10	4.3E-12	1.8E-12
W	1.7E-10	6.6E-12	2.2E-12
WSW	7.8E-11	3.7E-12	1.7E-12
SW	3.8E-11	2.4E-12	1.4E-12
SSW	2.8E-11	2.1E-12	1.3E-12
S	4.8E-11	2.7E-12	1.5E-12
SSE	3.4E-11	2.3E-12	1.4E-12
SE	4.3E-11	2.6E-12	1.5E-12
ESE	7.4E-11	3.7E-12	1.7E-12
E	1.3E-10	5.5E-12	2.0E-12
ENE	1.6E-10	6.2E-12	2.2E-12
NE	1.1E-10	4.6E-12	1.8E-12
NNE	9.8E-11	4.3E-12	1.8E-12

APPENDIX D
CALENDAR YEAR 2021 SURFACE WATER AND SEDIMENT DATA

THIS PAGE INTENTIONALLY LEFT BLANK

Table D-1. Surface Water Data for CY 2021

Station Name	Sample Name	Collection Date	Method	Analyte	Result	Error	Detection Limit	Units	VQ
IAAP100153	IAAP239990	04/14/21	ML-018	Gross Alpha	-4.22	6.46	12	pCi/L	UJ
IAAP100153	IAAP239990	04/14/21	ML-018	Gross Beta	2.08	9.06	15.3	pCi/L	UJ
IAAP100153	IAAP239990	04/14/21	ML-015	Uranium-234	1.08	0.589	0.475	pCi/L	J
IAAP100153	IAAP239990	04/14/21	ML-015	Uranium-235	-0.0229	0.189	0.487	pCi/L	UJ
IAAP100153	IAAP239990	04/14/21	ML-015	Uranium-238	0.352	0.335	0.393	pCi/L	UJ
IAAP100154	IAAP239994	04/14/21	ML-018	Gross Alpha	-1.6	6.68	12	pCi/L	UJ
IAAP100154	IAAP239994	04/14/21	ML-018	Gross Beta	-0.19	8.96	15.3	pCi/L	UJ
IAAP100154	IAAP239994	04/14/21	ML-015	Uranium-234	0.349	0.351	0.553	pCi/L	UJ
IAAP100154	IAAP239994	04/14/21	ML-015	Uranium-235	0.0862	0.244	0.635	pCi/L	UJ
IAAP100154	IAAP239994	04/14/21	ML-015	Uranium-238	0.0522	0.144	0.369	pCi/L	UJ
IAAP100155	IAAP239996	04/14/21	ML-018	Gross Alpha	-5.97	6.3	12	pCi/L	UJ
IAAP100155	IAAP239996	04/14/21	ML-018	Gross Beta	0.569	8.99	15.3	pCi/L	UJ
IAAP100155	IAAP239996	04/14/21	ML-015	Uranium-234	0.573	0.399	0.348	pCi/L	J
IAAP100155	IAAP239996	04/14/21	ML-015	Uranium-235	0	0.229	0.595	pCi/L	UJ
IAAP100155	IAAP239996	04/14/21	ML-015	Uranium-238	0.522	0.395	0.48	pCi/L	J
IAAP100155	IAAP239996-1	04/14/21	ML-018	Gross Alpha	-5.39	6.36	12	pCi/L	UJ
IAAP100155	IAAP239996-1	04/14/21	ML-018	Gross Beta	2.27	9.06	15.3	pCi/L	UJ
IAAP100155	IAAP239996-1	04/14/21	ML-015	Uranium-234	0.476	0.411	0.549	pCi/L	UJ
IAAP100155	IAAP239996-1	04/14/21	ML-015	Uranium-235	-0.0235	0.194	0.499	pCi/L	UJ
IAAP100155	IAAP239996-1	04/14/21	ML-015	Uranium-238	0.455	0.404	0.558	pCi/L	UJ
IAAP100155	IAAP239996-2	04/14/21	EML A-01-R MOD	Uranium-234	0.627	0.217	0.135	pCi/L	=
IAAP100155	IAAP239996-2	04/14/21	EML A-01-R MOD	Uranium-235	0.00514	0.0448	0.127	pCi/L	UJ
IAAP100155	IAAP239996-2	04/14/21	EML A-01-R MOD	Uranium-238	0.404	0.169	0.0923	pCi/L	=
IAAP100165	IAAP240000	04/14/21	ML-018	Gross Alpha	-2.47	6.61	12	pCi/L	UJ
IAAP100165	IAAP240000	04/14/21	ML-018	Gross Beta	9.86	9.41	15.3	pCi/L	UJ
IAAP100165	IAAP240000	04/14/21	ML-015	Uranium-234	0.504	0.373	0.345	pCi/L	J
IAAP100165	IAAP240000	04/14/21	ML-015	Uranium-235	0.0602	0.166	0.426	pCi/L	UJ
IAAP100165	IAAP240000	04/14/21	ML-015	Uranium-238	0.713	0.454	0.477	pCi/L	J
IAAP100178	IAAP240002	04/15/21	ML-018	Gross Alpha	-5.39	6.36	12	pCi/L	UJ
IAAP100178	IAAP240002	04/15/21	ML-018	Gross Beta	-2.46	8.86	15.3	pCi/L	UJ
IAAP100178	IAAP240002	04/15/21	ML-015	Uranium-234	0.52	0.413	0.409	pCi/L	J
IAAP100178	IAAP240002	04/15/21	ML-015	Uranium-235	0.166	0.274	0.505	pCi/L	UJ

Table D-1. Surface Water Data for CY 2021 (Continued)

Station Name	Sample Name	Collection Date	Method	Analyte	Result	Error	Detection Limit	Units	VQ
IAAP100178	IAAP240002	04/15/21	ML-015	Uranium-238	0.749	0.493	0.408	pCi/L	J
IAAP100180	IAAP240004	04/15/21	ML-018	Gross Alpha	-3.93	6.48	12	pCi/L	UJ
IAAP100180	IAAP240004	04/15/21	ML-018	Gross Beta	2.84	9.09	15.3	pCi/L	UJ
IAAP100180	IAAP240004	04/15/21	ML-015	Uranium-234	0.529	0.391	0.362	pCi/L	J
IAAP100180	IAAP240004	04/15/21	ML-015	Uranium-235	-0.021	0.173	0.447	pCi/L	UJ
IAAP100180	IAAP240004	04/15/21	ML-015	Uranium-238	0.17	0.241	0.434	pCi/L	UJ
IAAP100187	IAAP240006	04/15/21	ML-018	Gross Alpha	-1.89	6.66	12	pCi/L	UJ
IAAP100187	IAAP240006	04/15/21	ML-018	Gross Beta	1.71	9.04	15.3	pCi/L	UJ
IAAP100187	IAAP240006	04/15/21	ML-015	Uranium-234	0.863	0.489	0.54	pCi/L	J
IAAP100187	IAAP240006	04/15/21	ML-015	Uranium-235	0.257	0.299	0.469	pCi/L	UJ
IAAP100187	IAAP240006	04/15/21	ML-015	Uranium-238	0.667	0.419	0.428	pCi/L	J
IAAP177509	IAAP239992	04/15/21	ML-018	Gross Alpha	-2.18	6.63	12	pCi/L	UJ
IAAP177509	IAAP239992	04/15/21	ML-018	Gross Beta	-7.39	8.67	15.3	pCi/L	UJ
IAAP177509	IAAP239992	04/15/21	ML-015	Uranium-234	0.595	0.414	0.361	pCi/L	J
IAAP177509	IAAP239992	04/15/21	ML-015	Uranium-235	-0.0419	0.178	0.536	pCi/L	UJ
IAAP177509	IAAP239992	04/15/21	ML-015	Uranium-238	0.745	0.475	0.498	pCi/L	J
IAAP177517	IAAP240008	04/14/21	ML-018	Gross Alpha	0.146	6.83	12	pCi/L	UJ
IAAP177517	IAAP240008	04/14/21	ML-018	Gross Beta	3.79	9.13	15.3	pCi/L	UJ
IAAP177517	IAAP240008	04/14/21	ML-015	Uranium-234	0.747	0.43	0.311	pCi/L	J
IAAP177517	IAAP240008	04/14/21	ML-015	Uranium-235	0	0.204	0.532	pCi/L	UJ
IAAP177517	IAAP240008	04/14/21	ML-015	Uranium-238	0.306	0.292	0.421	pCi/L	UJ
IAAP100153	IAAP248686	11/19/21	ML-018	Gross Alpha	3.2	6.43	10.9	pCi/L	UJ
IAAP100153	IAAP248686	11/19/21	ML-018	Gross Beta	-4.45	6.89	12.2	pCi/L	UJ
IAAP100153	IAAP248686	11/19/21	ML-015	Uranium-234	0.573	0.425	0.501	pCi/L	J
IAAP100153	IAAP248686	11/19/21	ML-015	Uranium-235	-0.0428	0.182	0.547	pCi/L	UJ
IAAP100153	IAAP248686	11/19/21	ML-015	Uranium-238	1.05	0.566	0.498	pCi/L	J
IAAP100154	IAAP248690	11/20/21	ML-018	Gross Alpha	4.95	6.6	10.9	pCi/L	UJ
IAAP100154	IAAP248690	11/20/21	ML-018	Gross Beta	-2.56	6.99	12.2	pCi/L	UJ
IAAP100154	IAAP248690	11/20/21	ML-015	Uranium-234	0.71	0.477	0.523	pCi/L	J
IAAP100154	IAAP248690	11/20/21	ML-015	Uranium-235	0.0657	0.181	0.465	pCi/L	UJ
IAAP100154	IAAP248690	11/20/21	ML-015	Uranium-238	0.265	0.286	0.375	pCi/L	UJ
IAAP100155	IAAP248692	11/20/21	ML-018	Gross Alpha	0.873	6.22	10.9	pCi/L	UJ

Table D-1. Surface Water Data for CY 2021 (Continued)

Station Name	Sample Name	Collection Date	Method	Analyte	Result	Error	Detection Limit	Units	VQ
IAAP100155	IAAP248692	11/20/21	ML-018	Gross Beta	8.81	7.61	12.2	pCi/L	UJ
IAAP100155	IAAP248692	11/20/21	ML-015	Uranium-234	0.228	0.291	0.439	pCi/L	UJ
IAAP100155	IAAP248692	11/20/21	ML-015	Uranium-235	0.102	0.289	0.751	pCi/L	UJ
IAAP100155	IAAP248692	11/20/21	ML-015	Uranium-238	0.989	0.604	0.606	pCi/L	J
IAAP100165	IAAP248696	11/20/21	ML-018	Gross Alpha	5.82	6.68	10.9	pCi/L	UJ
IAAP100165	IAAP248696	11/20/21	ML-018	Gross Beta	-1.23	7.06	12.2	pCi/L	UJ
IAAP100165	IAAP248696	11/20/21	ML-015	Uranium-234	0.365	0.36	0.538	pCi/L	UJ
IAAP100165	IAAP248696	11/20/21	ML-015	Uranium-235	-0.0225	0.186	0.478	pCi/L	UJ
IAAP100165	IAAP248696	11/20/21	ML-015	Uranium-238	0.145	0.252	0.535	pCi/L	UJ
IAAP100178	IAAP248698	11/20/21	ML-018	Gross Alpha	4.37	6.54	10.9	pCi/L	UJ
IAAP100178	IAAP248698	11/20/21	ML-018	Gross Beta	-4.07	6.91	12.2	pCi/L	UJ
IAAP100178	IAAP248698	11/20/21	ML-015	Uranium-234	0.329	0.314	0.368	pCi/L	UJ
IAAP100178	IAAP248698	11/20/21	ML-015	Uranium-235	0	0.242	0.63	pCi/L	UJ
IAAP100178	IAAP248698	11/20/21	ML-015	Uranium-238	0.207	0.277	0.508	pCi/L	UJ
IAAP100180	IAAP248700	11/20/21	ML-018	Gross Alpha	-0.582	6.08	10.9	pCi/L	UJ
IAAP100180	IAAP248700	11/20/21	ML-018	Gross Beta	0.853	7.17	12.2	pCi/L	UJ
IAAP100180	IAAP248700	11/20/21	ML-015	Uranium-234	0.143	0.248	0.526	pCi/L	UJ
IAAP100180	IAAP248700	11/20/21	ML-015	Uranium-235	-0.0441	0.187	0.563	pCi/L	UJ
IAAP100180	IAAP248700	11/20/21	ML-015	Uranium-238	0.0534	0.147	0.378	pCi/L	UJ
IAAP100187	IAAP248702	11/20/21	ML-018	Gross Alpha	5.53	6.65	10.9	pCi/L	UJ
IAAP100187	IAAP248702	11/20/21	ML-018	Gross Beta	-0.474	7.1	12.2	pCi/L	UJ
IAAP100187	IAAP248702	11/20/21	ML-015	Uranium-234	0.998	0.554	0.386	pCi/L	J
IAAP100187	IAAP248702	11/20/21	ML-015	Uranium-235	0	0.253	0.659	pCi/L	UJ
IAAP100187	IAAP248702	11/20/21	ML-015	Uranium-238	0.85	0.51	0.384	pCi/L	J
IAAP177509	IAAP248688	11/20/21	ML-018	Gross Alpha	5.24	6.62	10.9	pCi/L	UJ
IAAP177509	IAAP248688	11/20/21	ML-018	Gross Beta	6.92	7.5	12.2	pCi/L	UJ
IAAP177509	IAAP248688	11/20/21	ML-015	Uranium-234	0.583	0.406	0.354	pCi/L	J
IAAP177509	IAAP248688	11/20/21	ML-015	Uranium-235	0	0.233	0.605	pCi/L	UJ
IAAP177509	IAAP248688	11/20/21	ML-015	Uranium-238	0.531	0.402	0.489	pCi/L	J
IAAP177517	IAAP248704	11/19/21	ML-018	Gross Alpha	3.2	6.43	10.9	pCi/L	UJ
IAAP177517	IAAP248704	11/19/21	ML-018	Gross Beta	-0.853	7.08	12.2	pCi/L	UJ
IAAP177517	IAAP248704	11/19/21	ML-015	Uranium-234	0.894	0.545	0.548	pCi/L	J

Table D-1. Surface Water Data for CY 2021 (Continued)

Station Name	Sample Name	Collection Date	Method	Analyte	Result	Error	Detection Limit	Units	VQ
IAAP177517	IAAP248704	11/19/21	ML-015	Uranium-235	-0.023	0.189	0.488	pCi/L	UJ
IAAP177517	IAAP248704	11/19/21	ML-015	Uranium-238	0.649	0.452	0.394	pCi/L	J

Negative results are less than the laboratory system's background level.

VQs:

= - Indicates that the data met all QA/QC requirements, and that the parameter has been positively identified and the associated concentration value is accurate.

J - Indicates that the parameter was positively identified; the associated numerical value is the approximate concentration of the parameter in the sample.

U - Indicates that the data met all QA/QC requirements, and that the parameter was analyzed for but was not detected above the reported sample quantitation limit.

UJ - Indicates that the parameter was not detected above the reported sample quantitation limit and may or may not represent the actual limit of quantitation necessary to accurately and precisely measure the analyte in the sample. However, the reported quantitation limit is approximate.

Table D-2. Sediment Data for CY 2021

Station Name	Sample Name	Collection Date	Method	Analyte	Result	Error	Detection Limit	Units	VQ
IAAP100153	IAAP239989	04/14/21	ML-015	Uranium-234	0.82	0.31	0.19	pCi/g	=
IAAP100153	IAAP239989	04/14/21	ML-015	Uranium-235	0.06	0.11	0.24	pCi/g	UJ
IAAP100153	IAAP239989	04/14/21	ML-015	Uranium-238	0.89	0.32	0.13	pCi/g	=
IAAP100154	IAAP239993	04/14/21	ML-015	Uranium-234	0.54	0.24	0.14	pCi/g	=
IAAP100154	IAAP239993	04/14/21	ML-015	Uranium-235	-0.01	0.06	0.15	pCi/g	UJ
IAAP100154	IAAP239993	04/14/21	ML-015	Uranium-238	0.66	0.27	0.12	pCi/g	=
IAAP100155	IAAP239995	04/14/21	ML-015	Uranium-234	0.37	0.24	0.18	pCi/g	J
IAAP100155	IAAP239995	04/14/21	ML-015	Uranium-235	0.00	0.13	0.34	pCi/g	UJ
IAAP100155	IAAP239995	04/14/21	ML-015	Uranium-238	0.40	0.25	0.18	pCi/g	J
IAAP100164	IAAP239997	04/15/21	ML-015	Uranium-234	0.71	0.29	0.15	pCi/g	=
IAAP100164	IAAP239997	04/15/21	ML-015	Uranium-235	0.03	0.09	0.24	pCi/g	UJ
IAAP100164	IAAP239997	04/15/21	ML-015	Uranium-238	0.77	0.31	0.20	pCi/g	=
IAAP100165	IAAP239999	04/14/21	ML-015	Uranium-234	0.71	0.28	0.12	pCi/g	=
IAAP100165	IAAP239999	04/14/21	ML-015	Uranium-235	0.05	0.09	0.20	pCi/g	UJ
IAAP100165	IAAP239999	04/14/21	ML-015	Uranium-238	1.13	0.37	0.14	pCi/g	=
IAAP100178	IAAP240001	04/15/21	ML-015	Uranium-234	0.79	0.34	0.23	pCi/g	=
IAAP100178	IAAP240001	04/15/21	ML-015	Uranium-235	0.00	0.11	0.29	pCi/g	UJ
IAAP100178	IAAP240001	04/15/21	ML-015	Uranium-238	0.57	0.29	0.23	pCi/g	J
IAAP100180	IAAP240003	04/15/21	ML-015	Uranium-234	0.37	0.21	0.16	pCi/g	J
IAAP100180	IAAP240003	04/15/21	ML-015	Uranium-235	0.04	0.10	0.26	pCi/g	UJ
IAAP100180	IAAP240003	04/15/21	ML-015	Uranium-238	0.34	0.20	0.14	pCi/g	J
IAAP100187	IAAP240005	04/15/21	ML-015	Uranium-234	0.26	0.17	0.17	pCi/g	J
IAAP100187	IAAP240005	04/15/21	ML-015	Uranium-235	0.03	0.08	0.21	pCi/g	UJ
IAAP100187	IAAP240005	04/15/21	ML-015	Uranium-238	0.39	0.20	0.13	pCi/g	J
IAAP177509	IAAP239991	04/15/21	ML-015	Uranium-234	0.58	0.25	0.18	pCi/g	=
IAAP177509	IAAP239991	04/15/21	ML-015	Uranium-235	0.12	0.12	0.14	pCi/g	UJ
IAAP177509	IAAP239991	04/15/21	ML-015	Uranium-238	0.43	0.22	0.18	pCi/g	=
IAAP177517	IAAP240007	04/14/21	ML-015	Uranium-234	0.28	0.19	0.14	pCi/g	J
IAAP177517	IAAP240007	04/14/21	ML-015	Uranium-235	-0.01	0.07	0.20	pCi/g	UJ
IAAP177517	IAAP240007	04/14/21	ML-015	Uranium-238	0.34	0.20	0.14	pCi/g	J

Table D-2. Sediment Data for CY 2021 (Continued)

Station Name	Sample Name	Collection Date	Method	Analyte	Result	Error	Detection Limit	Units	VQ
IAAP100153	IAAP248687	11/19/21	ML-015	Uranium-234	0.14	0.12	0.11	pCi/g	J
IAAP100153	IAAP248687	11/19/21	ML-015	Uranium-235	0.10	0.12	0.18	pCi/g	UJ
IAAP100153	IAAP248687	11/19/21	ML-015	Uranium-238	0.25	0.16	0.17	pCi/g	J
IAAP100154	IAAP248691	11/20/21	ML-015	Uranium-234	0.59	0.25	0.17	pCi/g	=
IAAP100154	IAAP248691	11/20/21	ML-015	Uranium-235	0.03	0.08	0.21	pCi/g	UJ
IAAP100154	IAAP248691	11/20/21	ML-015	Uranium-238	0.49	0.22	0.13	pCi/g	=
IAAP100155	IAAP248693	11/20/21	ML-015	Uranium-234	0.25	0.16	0.12	pCi/g	J
IAAP100155	IAAP248693	11/20/21	ML-015	Uranium-235	-0.01	0.06	0.17	pCi/g	UJ
IAAP100155	IAAP248693	11/20/21	ML-015	Uranium-238	0.70	0.28	0.18	pCi/g	=
IAAP100164	IAAP248695	11/20/21	ML-015	Uranium-234	0.84	0.31	0.12	pCi/g	=
IAAP100164	IAAP248695	11/20/21	ML-015	Uranium-235	0.06	0.11	0.23	pCi/g	UJ
IAAP100164	IAAP248695	11/20/21	ML-015	Uranium-238	0.79	0.30	0.12	pCi/g	=
IAAP100165	IAAP248697	11/20/21	ML-015	Uranium-234	0.52	0.23	0.11	pCi/g	=
IAAP100165	IAAP248697	11/20/21	ML-015	Uranium-235	0.03	0.08	0.22	pCi/g	UJ
IAAP100165	IAAP248697	11/20/21	ML-015	Uranium-238	0.47	0.22	0.13	pCi/g	=
IAAP100165	IAAP248697-1	11/20/21	ML-015	Uranium-234	0.73	0.29	0.14	pCi/g	=
IAAP100165	IAAP248697-1	11/20/21	ML-015	Uranium-235	0.03	0.09	0.23	pCi/g	UJ
IAAP100165	IAAP248697-1	11/20/21	ML-015	Uranium-238	0.78	0.30	0.14	pCi/g	=
IAAP100165	IAAP248697-2	11/20/21	EML A-01-R MOD	Uranium-234	0.40	0.12	0.05	pCi/g	=
IAAP100165	IAAP248697-2	11/20/21	EML A-01-R MOD	Uranium-235	0.01	0.03	0.06	pCi/g	UJ
IAAP100165	IAAP248697-2	11/20/21	EML A-01-R MOD	Uranium-238	0.44	0.12	0.02	pCi/g	=
IAAP100178	IAAP248699	11/20/21	ML-015	Uranium-234	0.38	0.19	0.13	pCi/g	J
IAAP100178	IAAP248699	11/20/21	ML-015	Uranium-235	0.02	0.06	0.13	pCi/g	UJ
IAAP100178	IAAP248699	11/20/21	ML-015	Uranium-238	0.29	0.17	0.13	pCi/g	J
IAAP100180	IAAP248701	11/20/21	ML-015	Uranium-234	0.35	0.19	0.13	pCi/g	J
IAAP100180	IAAP248701	11/20/21	ML-015	Uranium-235	0.00	0.06	0.13	pCi/g	UJ
IAAP100180	IAAP248701	11/20/21	ML-015	Uranium-238	0.42	0.20	0.11	pCi/g	=
IAAP100187	IAAP248703	11/20/21	ML-015	Uranium-234	0.45	0.22	0.14	pCi/g	=
IAAP100187	IAAP248703	11/20/21	ML-015	Uranium-235	-0.01	0.06	0.15	pCi/g	UJ
IAAP100187	IAAP248703	11/20/21	ML-015	Uranium-238	0.34	0.19	0.16	pCi/g	J

Table D-2. Sediment Data for CY 2021 (Continued)

Station Name	Sample Name	Collection Date	Method	Analyte	Result	Error	Detection Limit	Units	VQ
IAAP177509	IAAP248689	11/20/21	ML-015	Uranium-234	0.56	0.24	0.14	pCi/g	=
IAAP177509	IAAP248689	11/20/21	ML-015	Uranium-235	0.02	0.06	0.14	pCi/g	UJ
IAAP177509	IAAP248689	11/20/21	ML-015	Uranium-238	0.43	0.21	0.11	pCi/g	=
IAAP177517	IAAP248705	11/19/21	ML-015	Uranium-234	0.16	0.13	0.13	pCi/g	J
IAAP177517	IAAP248705	11/19/21	ML-015	Uranium-235	-0.01	0.06	0.16	pCi/g	UJ
IAAP177517	IAAP248705	11/19/21	ML-015	Uranium-238	0.15	0.13	0.15	pCi/g	J

Negative results are less than the laboratory system's background level.

VQs:

= - Indicates that the data met all QA/QC requirements, and that the parameter has been positively identified and the associated concentration value is accurate.

J - Indicates that the parameter was positively identified; the associated numerical value is the approximate concentration of the parameter in the sample.

U - Indicates that the data met all QA/QC requirements, and that the parameter was analyzed for but was not detected above the reported sample quantitation limit.

UJ - Indicates that the parameter was not detected above the reported sample quantitation limit and may or may not represent the actual limit of quantitation necessary to accurately and precisely measure the analyte in the sample. However, the reported quantitation limit is approximate.

THIS PAGE INTENTIONALLY LEFT BLANK