

## NORTH ST. LOUIS COUNTY FUSRAP SITES STATUS MAPS

March 2024

The U.S. Army Corps of Engineers (USACE), St. Louis District, has prepared status maps of its Formerly Utilized Sites Remedial Action Program (FUSRAP) activities for the North St. Louis County Sites in keeping with the Comprehensive Environmental Response, Compensation and Liability Act (CERCLA) and its implementing regulations and guidance documents. These sites are being investigated for potential contamination resulting from the storage and hauling of residues generated by uranium-processing activities conducted by the Manhattan Engineer District (MED) and the U.S. Atomic Energy Commission (AEC) from the 1940s through the 1960s. The historical MED/AEC storage areas are the St. Louis Airport Site (SLAPS) and the Hazelwood Interim Storage Site/Futura Coatings Company (HISS/Futura). When contamination is identified, remedial actions are taken in accordance with the *Record of Decision for the St. Louis North County Sites*.

These status maps include the SLAPS, HISS and Futura properties; the surrounding vicinity properties; and Coldwater Creek and its associated floodplain properties. The total area is approximately 2,000 acres, which includes approximately 13.8 miles of Coldwater Creek. To cover that much area, the status information is presented on seven maps contained in an Acrobat file. The maps are sequenced to follow Coldwater Creek from SLAPS to the Missouri River, as follows.

Map 1: Banshee Road to Dunn Road

Map 2: Dunn Road to Rue St. Denis Street Bridge

Map 3: Rue St. Denis Street Bridge to Jana Elementary School

Map 4: Jana Elementary School to Westminster Drive

Map 5: Westminster Drive to Harold J Evangelista Park (formerly Black Jack Park)

Map 6: Harold J Evangelista Park (formerly Black Jack Park) to Missouri Route 367

Map 7: Missouri Route 367 to the Missouri River

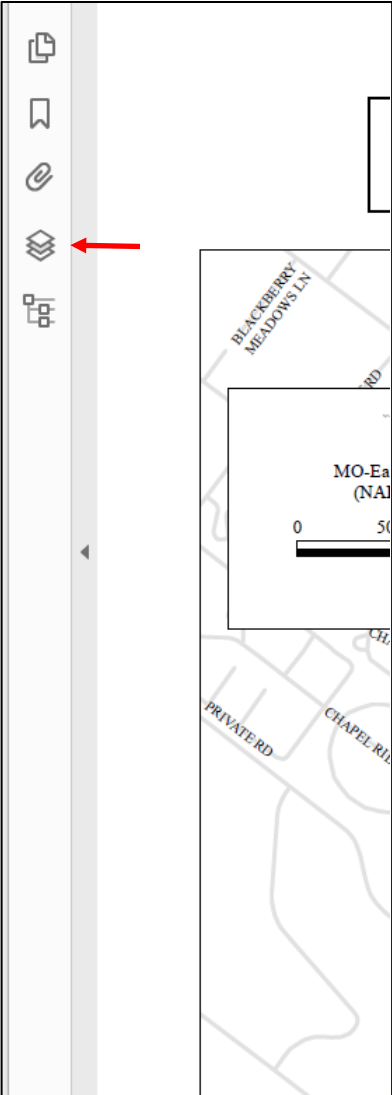
The different types of status are described as follows.

Released for Unrestricted Use	Land areas where the final results from radiological surveys and from laboratory analysis of soil samples have undergone detailed and rigorous evaluations in accordance with CERCLA requirements, the outcomes of those evaluations met the established protectiveness criteria, and the report that documents the data and evaluations has been issued. No restrictions on current or future uses of the land areas are required because protectiveness requirements are met.
USACE Excavation Complete	Land areas where USACE completed remedial action by excavating contaminated soil and shipping it to an out-of-state, licensed disposal facility.
DOE Excavation Complete	Land areas where the U.S. Department of Energy (DOE) completed remedial action by excavating contaminated soil and shipping it to an out-of-state, licensed disposal facility.
Being Processed for Unrestricted Use	Land areas where the results from radiological surveys and from laboratory analysis of soil samples have undergone preliminary evaluations and the outcomes of those evaluation indicate that the established protectiveness criteria will be met when the full evaluations and report are completed.
Under Evaluation (Initial Survey through Pre-Design)	Land areas where soil sampling, surveys and preliminary evaluations have been started but are not complete.
Remediation Required	Land areas where soil sampling, surveys and preliminary evaluations have identified contaminated soil. These land areas require remedial design, remedial action and/or restoration.

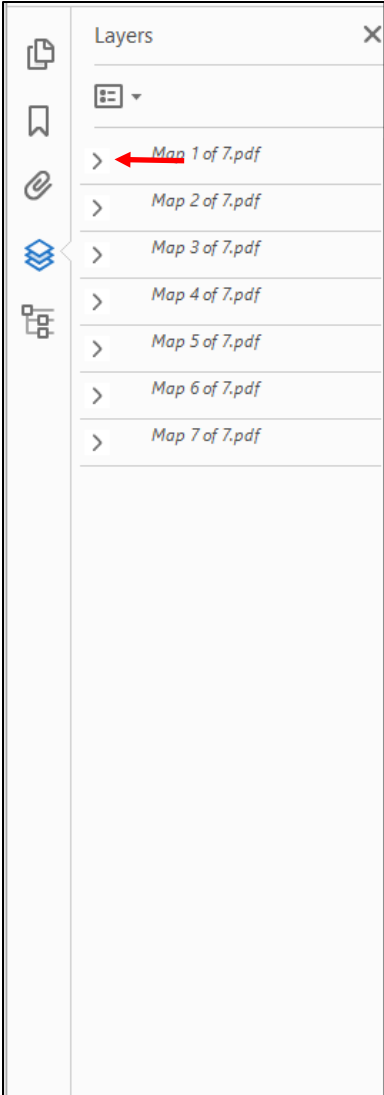
Future Evaluation or Need Right of Entry	Land areas where soil sampling, surveys and preliminary evaluations have not started because of resource constraints, the owner is negotiating terms with USACE for the right of entry to the subject land, the owner is unwilling to grant a right of entry, the owner is not responsive to requests for right of entry, or contact information is unavailable for the property owner. As of December 2022, the owner had not granted a right of entry for all gray areas.
Inaccessible Area with Contamination	Land areas where contaminated soil is underneath or supporting a structure, such as a building, road or railroad, and the current configuration is protective of human health and the environment. When the structure is removed, USACE will perform remedial action for the contaminated soil.
Non-Impacted Areas	Land areas beyond the area where the conceptual site model indicates soil would be contaminated. No analytical data or verifiable factual evidence brought to USACE's attention has identified a need to sample or test these areas.

The following information is provided to aid in viewing different layers of information in this file after downloading the file from a webpage or email message.

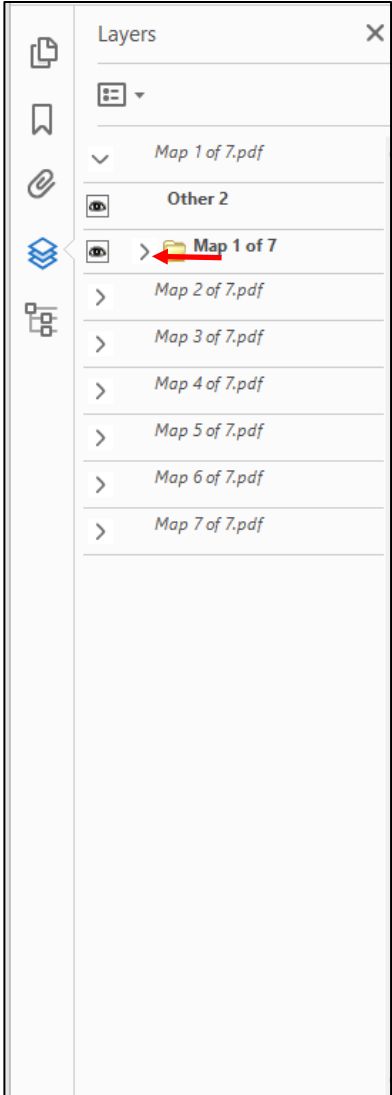
1. After scrolling to the desired Map, select the [Layer](#) icon on the left panel.



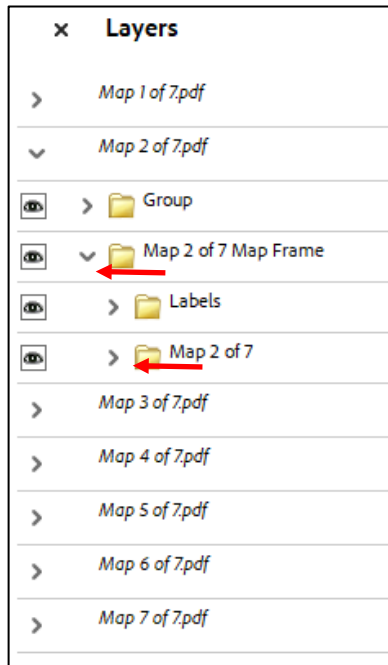
2. You will see each map listed with a drop-down arrow pointing to the right.



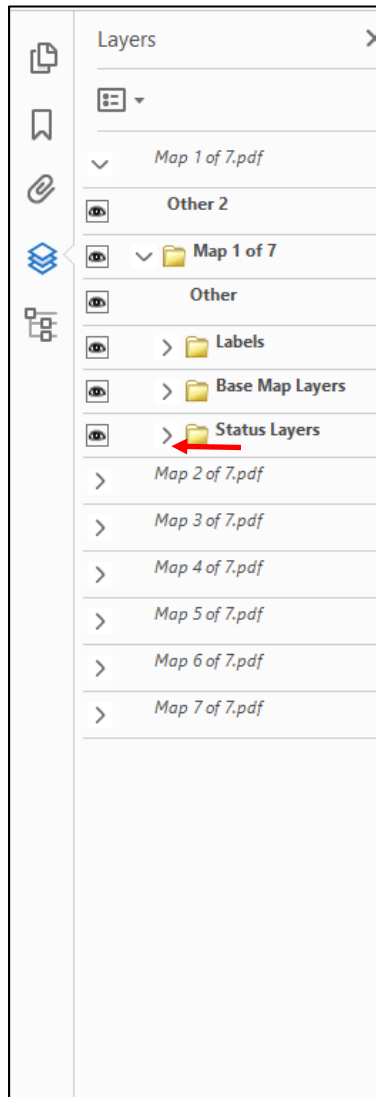
3. For the map you wish to explore, click on its drop-down [arrow](#) to see its first layer. The arrow now points down.




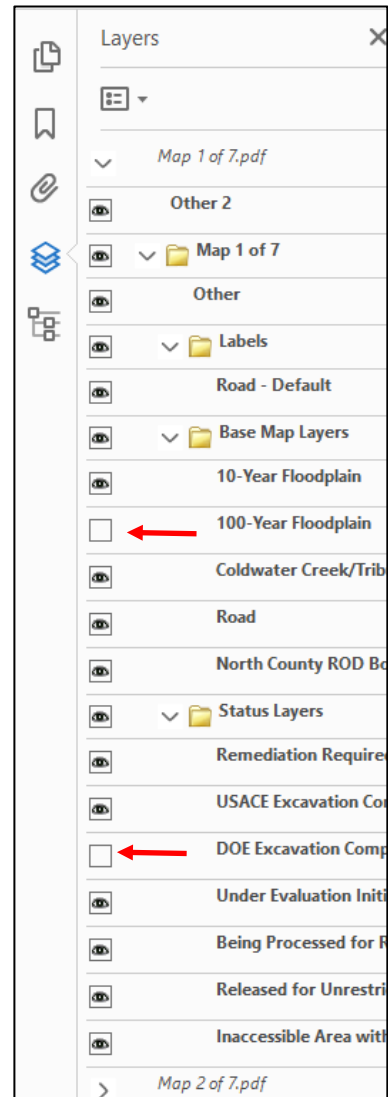
4. If see Map # of 7 Map Frame, click on the right-pointing drop-down arrow next to that to see Map # of 7. Then click on the drop-down arrow next to that.



5. Click on the new right-pointing drop-down arrows to see all layers for that map.



6. Click on the [Eye](#) icon  to hide a layer. Click again to view a layer. In the following image, the 100-year floodplain and USACE Excavations layers will not be showing on Map 2. The layers will be shown.

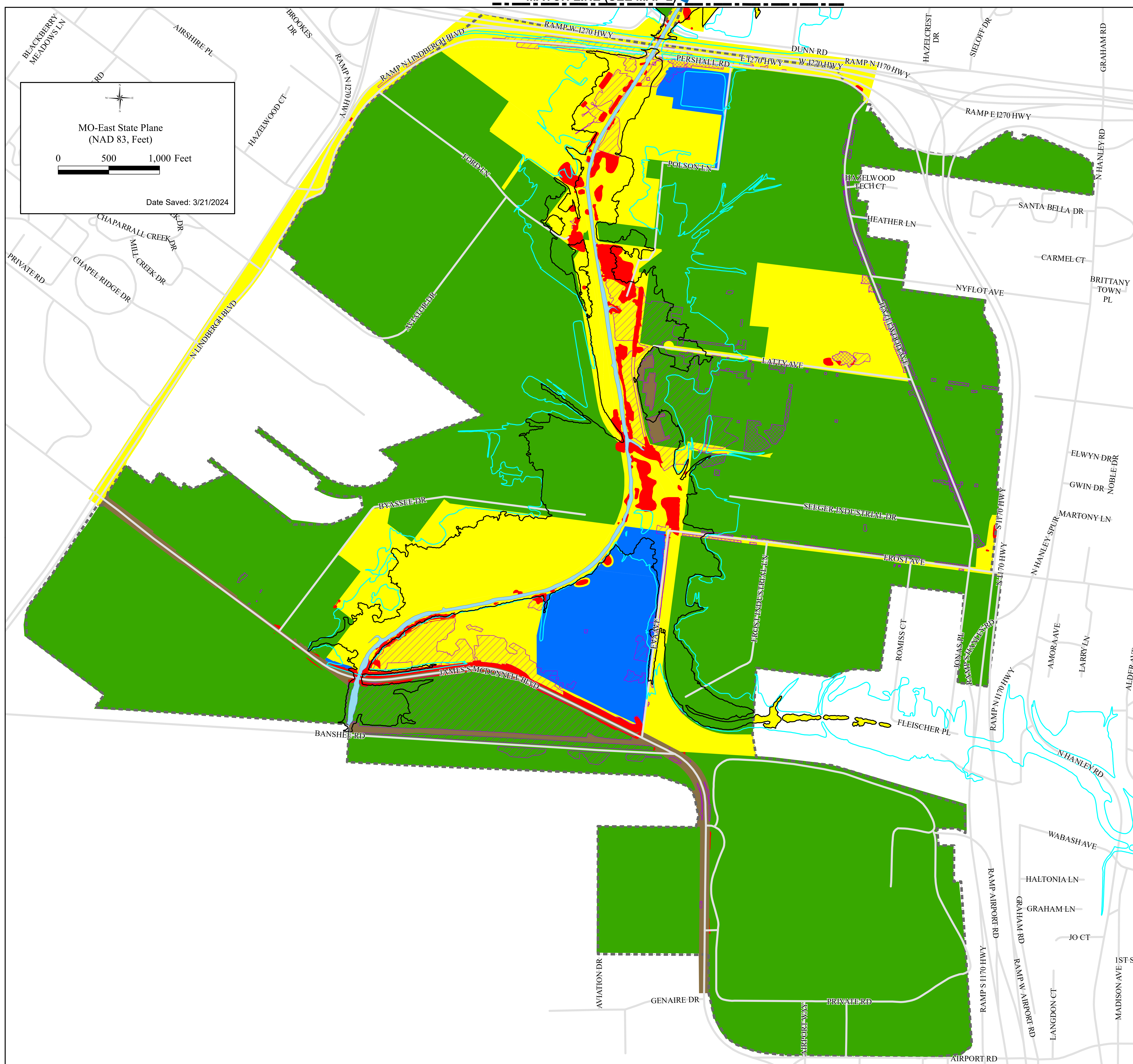




# North St. Louis County Sites

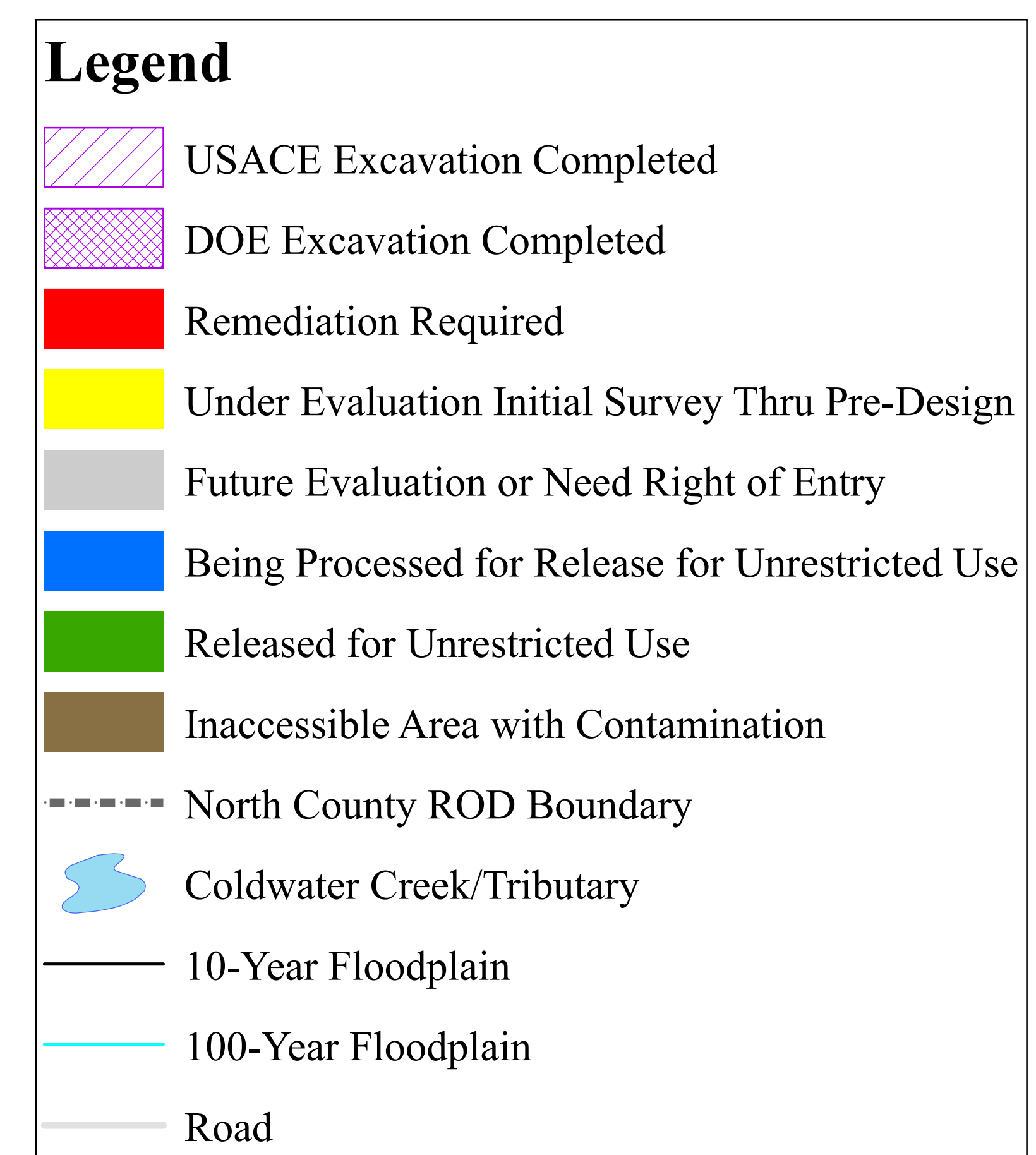
## Map 1 of 7 (Banshee Road to Dunn Road)

Coldwater Creek - Approximately  
12 miles to Missouri River



**SLAPS, HISS,  
Latty Avenue  
& SLAPS VPs**

**Industrial, Commercial  
Uses**



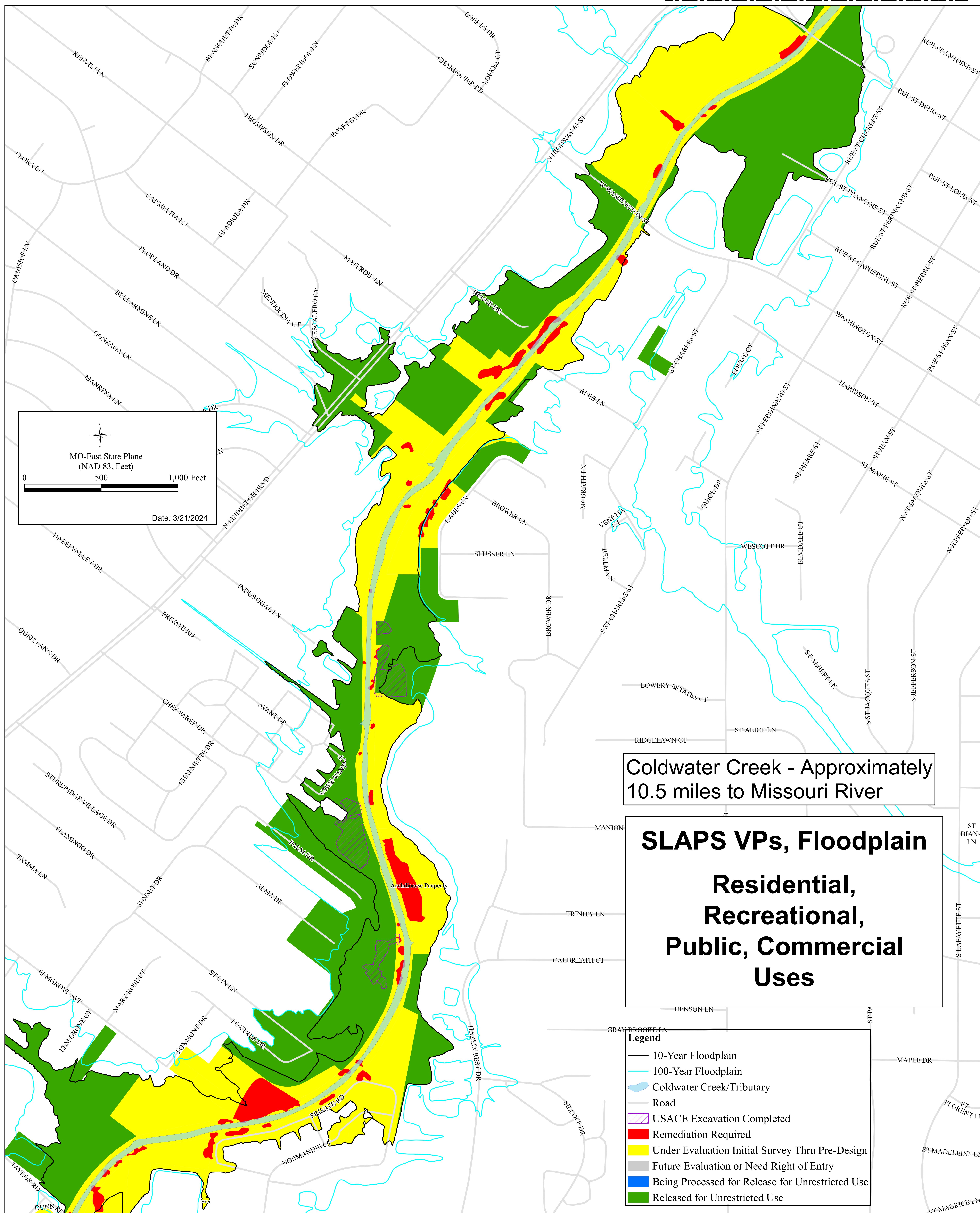


Map 2 of 7  
(Coldwater Creek Dunn Road to St. Denis Bridge)

Map 2 of 7

(Coldwater Creek Dunn Road to St. Denis Bridge)

**MATCH LINE (SEE MAP 3)**

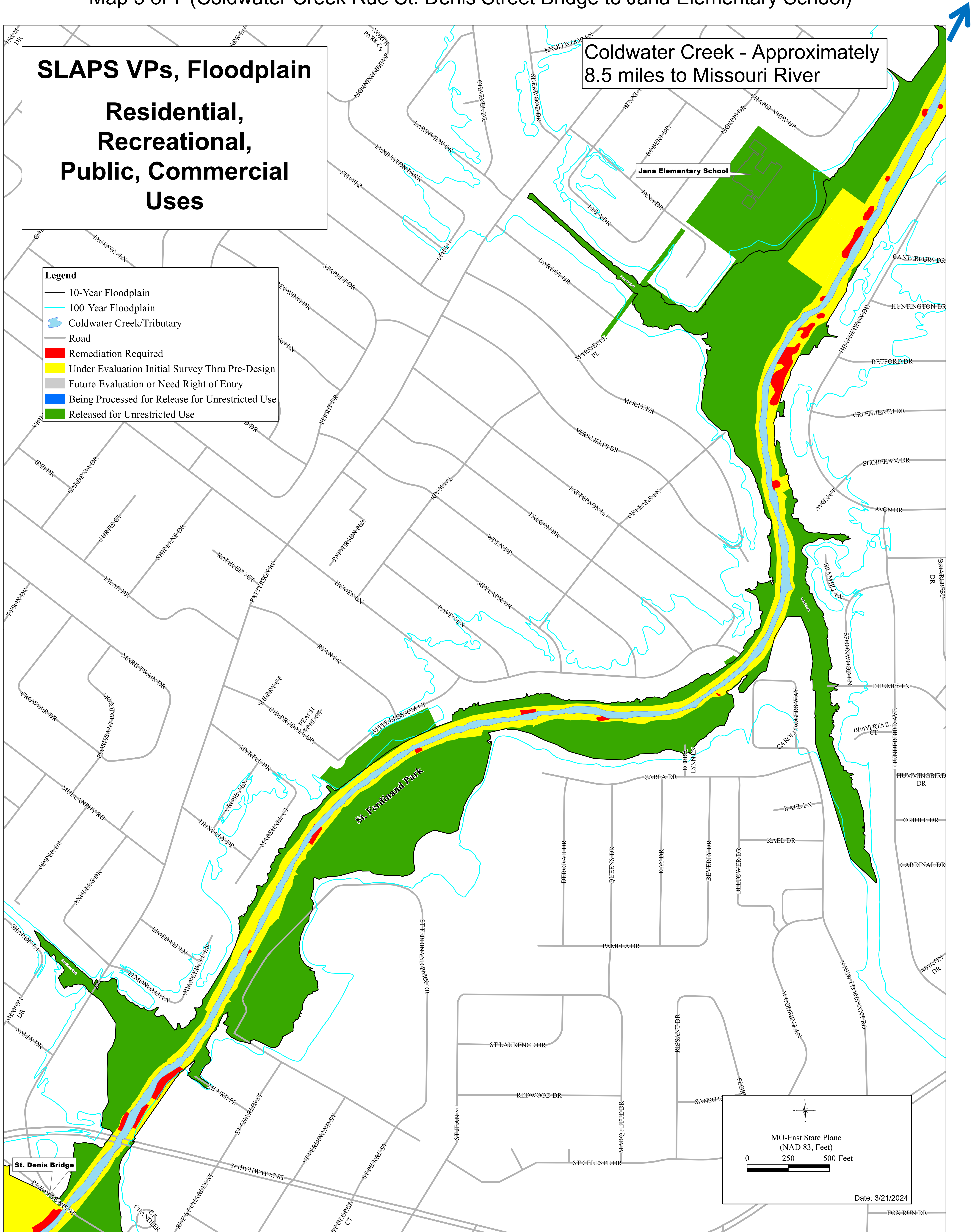


**MATCH LINE (SEE MAP 1)**



# North St. Louis County Sites

Map 3 of 7 (Coldwater Creek Rue St. Denis Street Bridge to Jana Elementary School)





Map 4 of 7 (Coldwater Creek Jana Elementary to Westminster Dr)

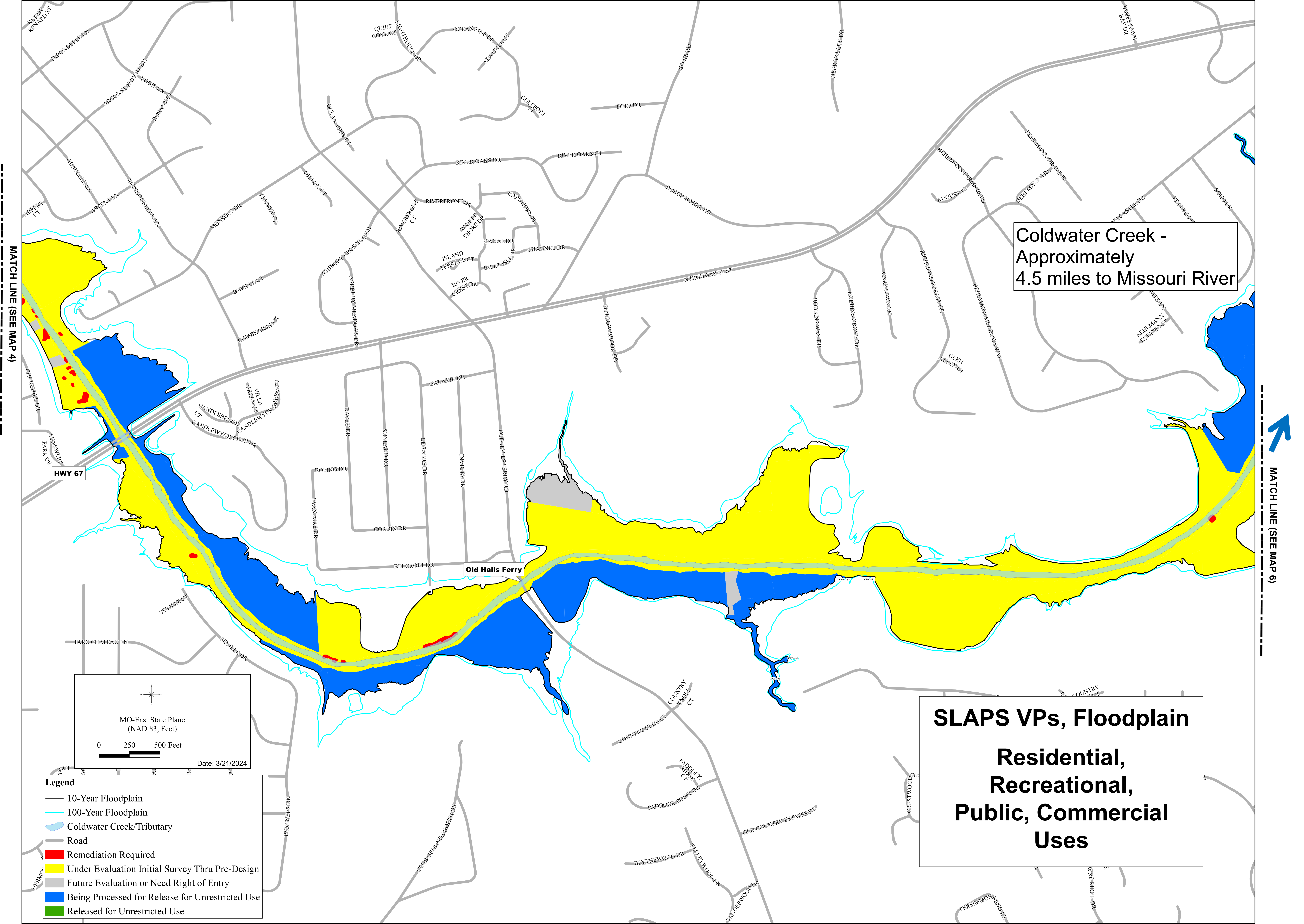


# SLAPS VPs, Floodplain Residential, Recreational, Public, Commercial Uses

Coldwater Creek -  
Approximately  
7 miles to Missouri River

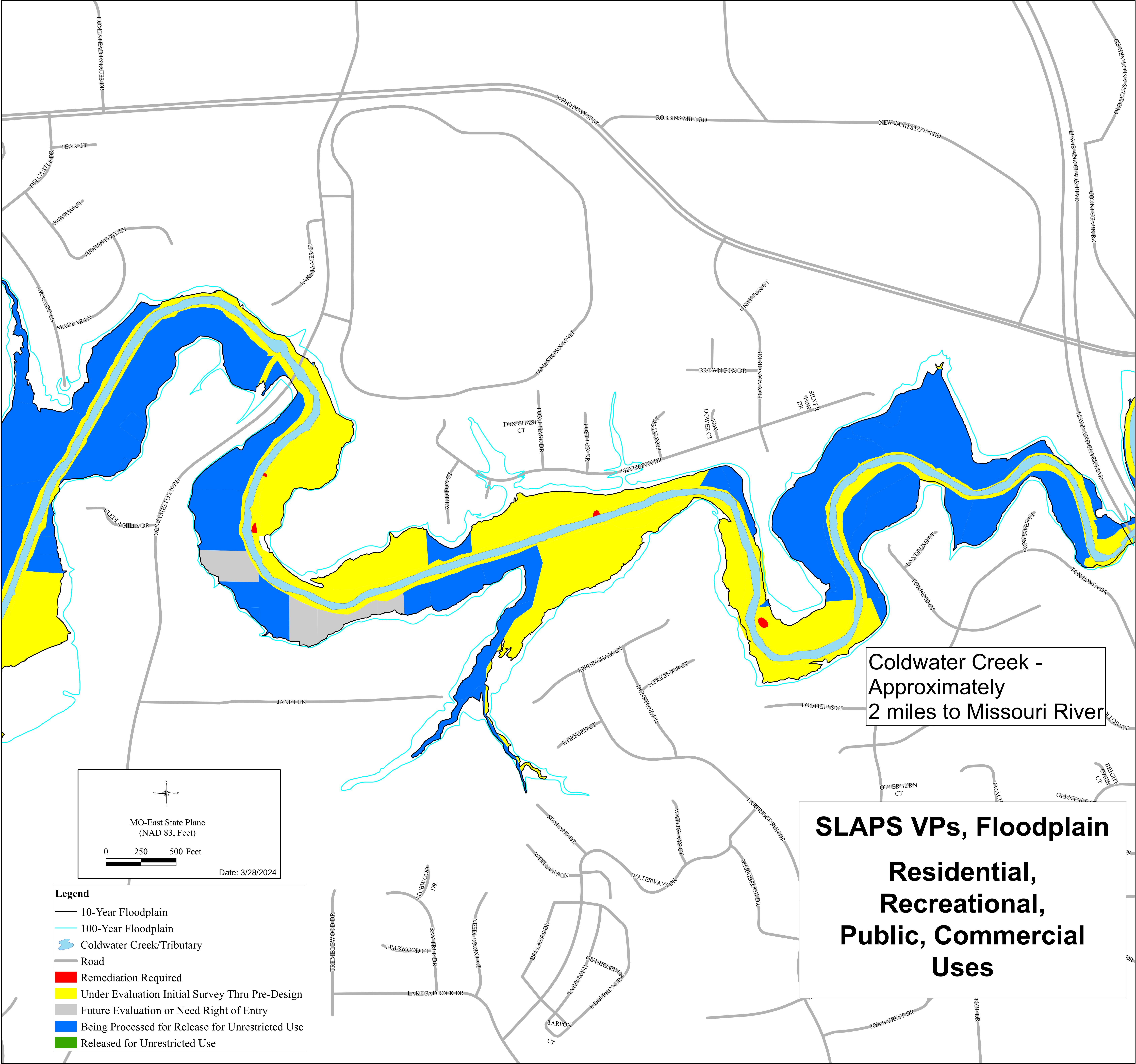


North St. Louis County Sites  
Map 5 of 7 (Coldwater Creek Westminster Dr to Black Jack Park)





North St. Louis County Sites  
Map 6 of 7 (Coldwater Creek Black Jack Park to Highway 367)

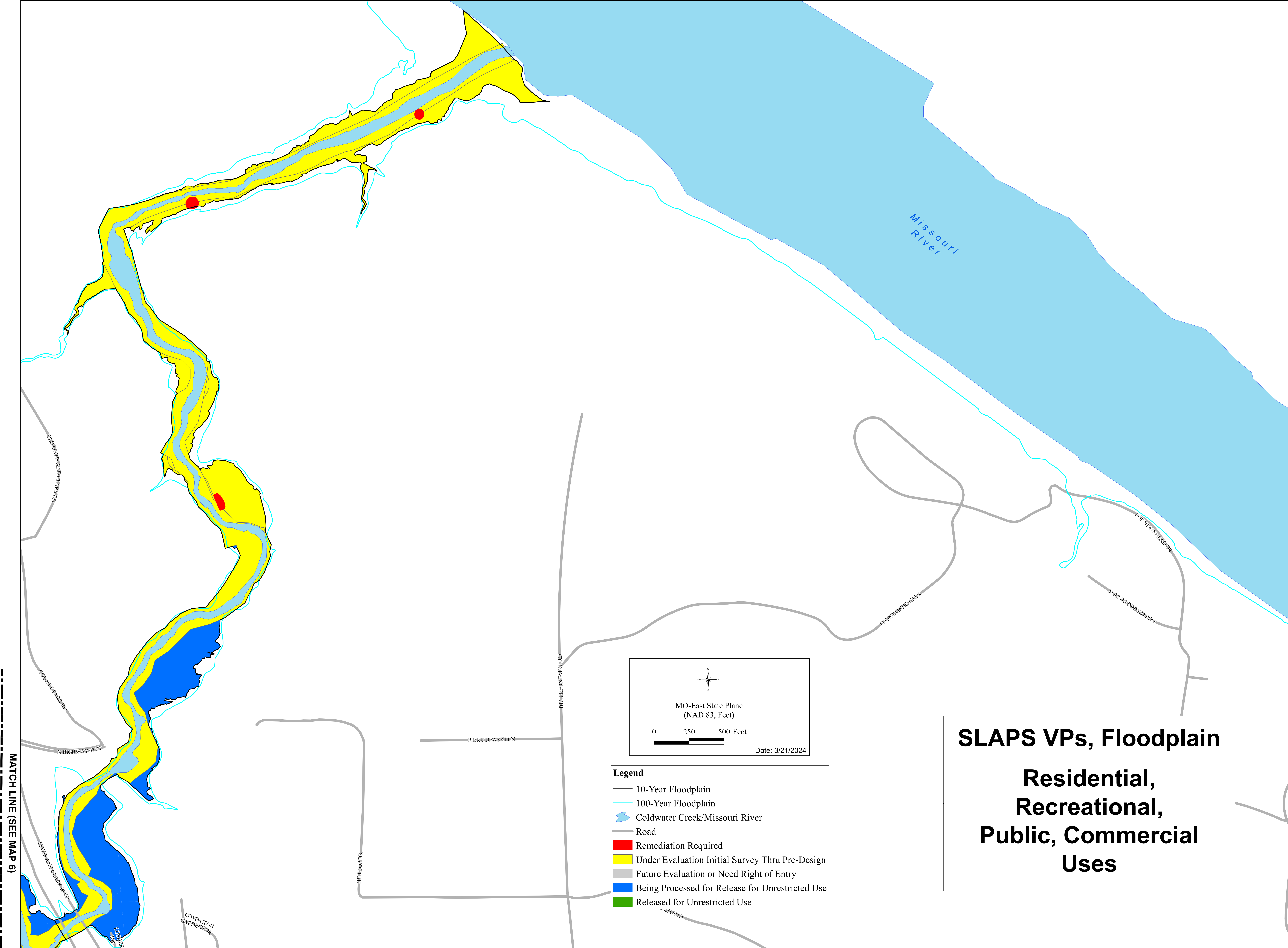


Coldwater Creek -  
Approximately  
2 miles to Missouri River

**SLAPS VPs, Floodplain**  
**Residential,**  
**Recreational,**  
**Public, Commercial**  
**Uses**



**North St. Louis County Sites**  
Map 7 of 7 (Coldwater Creek Highway 367 to the Missouri River)



**SLAPS VPs, Floodplain**  
**Residential,**  
**Recreational,**  
**Public, Commercial**  
**Uses**