

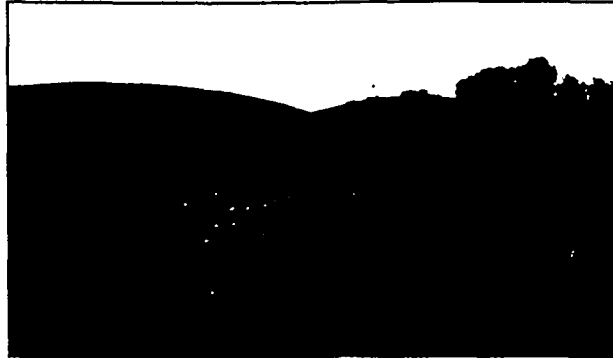
# HISS piles not affected by May flooding

The rains came down, the creeks came up, and St. Louisans once again were coping with their second major flood in just two years. Yet, unlike the great flood of '93, in which the Mississippi and Missouri rivers covered giant swaths of lowlands, this flood was more localized.

Coldwater Creek, which flows past the Hazelwood Interim Storage Site on Latty Avenue, crested the night of May 16. Combined with the overflow from area storm drains, the floodwaters put the site under 12 to 18 inches of water.

While the DOE information center trailer and other site buildings incurred some minor water damage, the two HISS piles were unaffected. The piles, which contain low-level radioactive soils from previous area cleanups, were constructed with just such circumstances in mind.

Each is protected by geotextile membrane cover with overlying reinforcing grid. Rip-rap (large rocks supported by wire) surrounds the base of each pile, extending up the sides to a level 2 feet above the 100-year flood level for Coldwater Creek.



*The HISS piles as seen from the DOE Information Center on Latty Avenue.*

DOE Public Information Center  
9170 Latty Avenue  
Berkeley, MO 63134

BULK RATE US POSTAGE  
**PAID**  
HAZELWOOD, MO  
PERMIT NO. 215

Your toll-free number to the DOE Public Information Center is 1-800-253-9759