

ST. LOUIS FUSRAP OVERSIGHT COMMITTEE

c/o 111 So. Meramec

Clayton, MO 63105

314.615.1635

RicCavanagh@Stlouisco.com

MEMORANDUM

TO: St. Louis FUSRAP Oversight Committee
Other Interested Parties

FROM: Richard R. Cavanagh *RC*
Chairperson

RE: Next Meeting

The next meeting of the St. Louis FUSRAP Oversight Committee will be on Friday, July 14, 11:30 am.

Note Change of Meeting Location: Since the Latty Ave trailers are being moved, the meeting will be held at the Hazelwood Community Center East, 8969 Dunn Road (just east of Graham/Hanley Road).

Committee members who are unable to attend should contact the Chairperson to be excused.

I am also pleased to report that John Langerak, Director of Public Works for the City of Berkeley will be joining the Committee representing his city. John should be at our next meeting.

:RRC

ST. LOUIS FUSRAP OVERSIGHT COMMITTEE

c/o 111 So. Meramec

Clayton, MO 63105

314.615.1635

RicCavanagh@Stlouisco.com

Summary of June 9, 2000 Meeting

Members Present: Bill Brandes, Tom Manning, Ric Cavanagh, Jack Fraenhoffer, Jan Titus, Sally Price, Anna Ginsburg

Other Interested Parties: Joan Reading, Elaine Seele, JoAnne Wade, Eric Gilstrap, Jalal El-Jayyousi, Bob Geller, Bob Boland, Bob Marchant, David Wagoner, Neal Slaten, Sharon Cotner

The following comments are in addition to the handouts provided by USACE (see attached).

Page 4 – Re-defined footprint at East end will save a lot of money. Dave Wagoner of Envirocare explained that his firm received more waste than expected in May. Therefore, there were not enough gondola cars available.

Page 5 – Discussion was held about the private citizen entering SLAPS. Sharon Cotner indicated that there is too much traffic in and out to keep the gates closed. Bob Geller of MDNR asked about the estimated dose of exposure for the man. Sharon stated that she would provide that information when she received the report. Jan Titus asked if there had been any response from the FAA yet for air space permits. Sharon indicated no. Despite USACE applying even earlier for these permits, FAA continues to be slow in response.

Page 7 – VP's 9 – 12 are along McDonnell Blvd. VP 38 had more volume than expected (chasing Thorium). Trailers will be packed for the move on 28 June. 10 July the move begins.

Page 8 – Rev O = initial version. PRAR = Post Remedial Action Report. Use of shoring technique will save money and time.

Page 9 – EPA has requested a revised schedule. Therefore, the ROD will be pushed back from December, 2000 to August, 2001. In response to Bob Geller's question, Sharon indicated that the public hearing on the ROD will likely be in December, 2000. Sharon indicated that this revised schedule should not slow the work since the work is covered under EE/CA's. The only possible delay would be at HISS since we only have EE/CA's for surface work.

Sharon reported that the meeting with the CX went reasonably well: St. Louis won one issue and another major issue is still pending. Likewise, regarding clean up criteria, St. Louis won one issue and the other remains unresolved. There will be another meeting at

Headquarters with CX and the NRC on June 23. The NRC claims that the CX's interpretation of NRC standards are inaccurate.

A signed ROD was received for Madison, Illinois.

Page 11 – Eric Gilstrap of MNDR provided copies of sample results from Coldwater Creek (see enclosed).

Sharon also reported that a potential new FUSRAP site in Burlington, Iowa probably will be assigned to St. Louis (the Iowa Army Ammunition Plant). This should have no negative effects on the St. Louis clean up.

Bob Geller of MDNR requested a few minutes at the end of the meeting to brief the Committee on Westlake Landfill. (Westlake is not technically part of the FUSRAP site but many Committee members dealt with the issue of Westlake as part of the previous Task Force Report).

EPA and the state are developing options for clean up of the approximately 146,000 cyds of material taken from HISS and deposited in Westlake Landfill. That portion of the landfill was closed in 1973.

Five Options are being considered:

- 1) no action
- 2) add institutional controls
- 3) add 18 inches of soil as a barrier
- 4) bring up to standards (two foot cover, one foot for vegetation)
- 5) vertical expansion: re-activate the landfill, add waste, ultimately cover (cap)

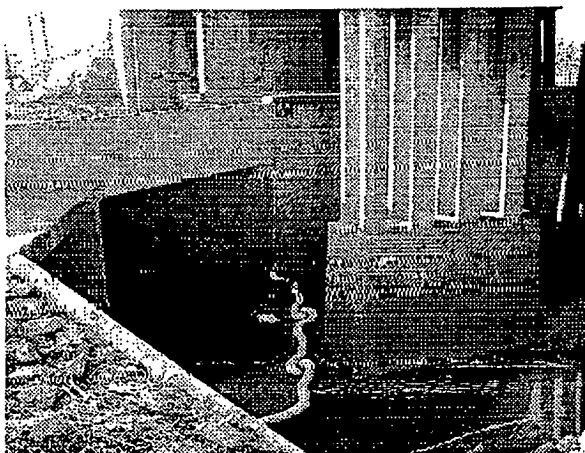
Bob indicated that the document repository for the project is at the St. Louis County Bridgeton Library.

Note: The next meeting of the FUSRAP Oversight Committee will be on Friday, July 14, 2000, 11:30 am. THE MEETING LOCATION IS THE HAZELWOOD COMMUNITY CENTER EAST, 8969 Dunn Rd. (east of Graham/Hanley).



MISSOURI DEPARTMENT OF NATURAL RESOURCES

FUSRAP Oversight and Monitoring
Report on Sampling of Flows
in Coldwater Creek; July '99 – March '00



Missouri Department of Natural Resources
Hazardous Waste Program
P.O. Box 176
Jefferson City, MO 65102
(573)751-3907
fax(573)526-5268

Missouri Department of Natural Resources
Florissant Field Office
917 N. Hwy 67 Suite 104
Florissant, MO 63031
(314)877-3250
fax(314)877-3254

Coldwater Creek
250 yds N. of Dunn Rd, downstream of SLAPS & HISS
July 9, 1999

Water Sample ID: VPS070999CWCW

Parameters	Results	Evaluation
Total Uranium	0.066 mg/l (computes 44.6 pCi/l)	<2 mg/l 30 day avg. criteria ¹
Gross Alpha	10 ± 5 pCi/l includes U	<15pCi/l excluding U & Radon ²
Gross Beta	17 ± 7 pCi/l	<50 pCi/L. ³

¹ No NPDES limit exists. 2 mg/l 30 day avg. is a guide from limits specified for discharges from mining operations as per 40 CFR 440.

² No NPDES limit. 15 pCi/l gross alpha activity excluding Radon and Uranium is used here as a guide and was declared an Applicable Rule & Regulation for the site. This value is an MCL (Maximum Contaminant Level) for Primary Drinking Water Sources as declared by State Regulation 10 CSR 60-4.060. (Note: though may exceed 15pCi/l, limit is based upon impact upon a drinking water supply. The Missouri River is the downstream public water supply and is not likely to be noticeably impacted by excessive levels of alpha activity from Coldwater Creek.)

³ The Missouri standards for primary drinking water supplies are used here as a guide. It specifies an action level of 50pCi/l for Gross Beta and an exposure limit of 4mrem/year. If the action level were exceeded, individual analysis for specific Beta emitting isotopes would be required.

Coldwater Creek
 Downstream of SLAPS
 Aug. 10, 1999
 Water Sample ID: VPS081099CWCWA

Parameters	Results	Evaluation
Total Uranium	0.0086 mg/l (computes 5.8 pCi/l)	<2 mg/l 30 day avg. criteria ⁴
Gross Alpha	9.3 ± 6.5 pCi/l includes U	<15pCi/l excluding U & Radon ⁵
Gross Beta	14 ± 6 pCi/l	<50 pCi/L ⁶
Arsenic	ND	<0.050 mg/l'
Barium	0.15mg/l	<2.00 mg/l'
Cadmium	ND	<0.005 mg/l'
Chromium	ND	<0.100mg/l'
Lead	ND	<0.015mg/l'

Coldwater Creek
 Upstream of SLAPS
 Aug. 10, 1999
 Water Sample ID: VPS081099CWCWB

Parameters	Results	Evaluation
Arsenic	ND	<0.050 mg/l'
Barium	0.13mg/l	<2.00 mg/l'
Cadmium	ND	<0.005 mg/l'
Chromium	ND	<0.100mg/l'
Lead	ND	<0.015mg/l'

ND = Non-detect.

⁴ No NPDES limit exists. 2 mg/l 30 day avg. is a guide from limits specified for discharges from mining operations as per 40 CFR 440.

⁵ No NPDES limit. 15 pCi/l gross alpha activity excluding Radon and Uranium is used here as a guide and was declared an Applicable Rule & Regulation for the site. This value is an MCL (Maximum Contaminant Level) for Primary Drinking Water Sources as declared by State Regulation 10 CSR 60-4.060. (Note: though may exceed 15pCi/l, limit is based upon impact upon a drinking water supply. The Missouri River is the downstream public water supply and is not likely to be noticeably impacted by excessive levels of alpha activity from Coldwater Creek.)

⁶ The Missouri standards for primary drinking water supplies are used here as a guide. It specifies an action level of 50pCi/l for Gross Beta and an exposure limit of 4mrem/year. If the action level were exceeded, individual analysis for specific Beta emitting isotopes would be required.

⁷ Values from 10 CSR 20-7.031 Table A Criteria For Designated Use (Class III Waters) is used as a guide. These apply to waters designated for drinking water supply. Coldwater Creek is NOT used for a drinking water source.

Coldwater Creek
 Downstream of SLAPS
 November 22, 1999
 Water Sample ID: VPS112299CWCWA

Parameters	Results	Evaluation
Total Uranium	0.0028 mg/l (computes 1.9 pCi/l)	<2 mg/l 30 day avg. criteria ⁸
Gross Alpha	2.1 ± 5.4 pCi/l includes U	<15pCi/l excluding U & Radon ⁹
Gross Beta	5.4 ± 5.0 pCi/l	<50 pCi/L. ¹⁰
Arsenic	ND	<0.050 mg/L ¹¹
Barium	0.10 mg/l	<2.00 mg/l ¹²
Cadmium	ND	<0.005 mg/l ¹²
Chromium	ND	<0.100mg/l ¹²
Lead	ND	<0.015mg/l ¹²

Coldwater Creek
 Upstream of SLAPS
 November 22, 1999
 Water Sample ID: VPS112299CWCWB

Parameters	Results	Evaluation
Arsenic	ND	<0.050 mg/l ¹²
Barium	0.12 mg/l	<2.00 mg/l ¹²
Cadmium	ND	<0.005 mg/l ¹²
Chromium	ND	<0.100mg/l ¹²
Lead	ND	<0.015mg/l ¹²

ND = Non-detect.

⁸ No NPDES limit exists. 2 mg/l 30 day avg. is a guide from limits specified for discharges from mining operations as per 40 CFR 440.

⁹ No NPDES limit. 15 pCi/l gross alpha activity excluding Radon and Uranium is used here as a guide and was declared an Applicable Rule & Regulation for the site. This value is an MCL (Maximum Contaminant Level) for Primary Drinking Water Sources as declared by State Regulation 10 CSR 60-4.060. (Note: though may exceed 15pCi/l, limit is based upon impact upon a drinking water supply. The Missouri River is the downstream water supply and is not likely to be noticeably impacted by excessive levels of alpha activity from Coldwater Creek.)

¹⁰ The Missouri standards for primary drinking water supplies are used here as a guide. It specifies an action level of 50pCi/l for Gross Beta and an exposure limit of 4mrem/year. If the action level were exceeded, individual analysis for specific Beta emitting isotopes would be required.

¹¹ 10 CSR 20-7.031 Table A Criteria For Designated Use (Class III Waters).

Coldwater Creek
 Downstream of SLAPS
 March 7, 2000

Water Sample ID: VPS030700CWCWA

Parameters	Results	Evaluation
Total Uranium	0.0047 mg/l (computes 3.19 pCi/l)	<2 mg/l 30 day avg. criteria ¹²
Gross Alpha, total	6.1 ± 7.5 pCi/l includes U	<15pCi/l excluding U & Radon ¹³
Gross Beta, total	17 ± 6.9 pCi/l	<50 pCi/L ¹⁴
Arsenic, total	ND	<0.050 mg/L ¹⁵
Barium, total	0.14 mg/l	<2.00 mg/l ¹⁵
Cadmium, total	ND	<0.005 mg/l ¹⁵
Chromium, total	ND	<0.100mg/l ¹⁵
Copper, total	ND	<1.300mg/l ¹⁵
Lead, total	ND	<0.015mg/l ¹⁵
Manganese, total	0.82 mg/l	>0.050mg/l ¹⁵

Coldwater Creek
 Upstream of SLAPS
 March 7, 2000

Water Sample ID: VPS030700CWCWB

Parameters	Results	Evaluation
Arsenic, total	ND	<0.050 mg/l ¹⁵
Barium, total	0.14 mg/l	<2.00 mg/l ¹⁵
Cadmium, total	ND	<0.005 mg/l ¹⁵
Chromium, total	ND	<0.100mg/l ¹⁵
Copper, total	ND	<1.300mg/l ¹⁵
Lead, total	ND	<0.015mg/l ¹⁵
Manganese, total	0.64 mg/l	>0.050mg/l ¹⁵

ND = Non-detect.

¹² No NPDES limit exists. 2 mg/l 30 day avg. is a guide from limits specified for discharges from mining operations as per 40 CFR 440.

¹³ No NPDES limit. 15 pCi/l gross alpha activity excluding Radon and Uranium is used here as a guide and was declared an Applicable Rule & Regulation for the site. This value is an MCL (Maximum Contaminant Level) for Primary Drinking Water Sources as declared by State Regulation 10 CSR 60-4.060. (Note: though may exceed 15pCi/l, limit is based upon impact upon a drinking water supply. The Missouri River is the downstream water supply and is not likely to be noticeably impacted by excessive levels of alpha activity from Coldwater Creek.)

¹⁴ The Missouri standards for primary drinking water supplies are used here as a guide. It specifies an action level of 50pCi/l for Gross Beta and an exposure limit of 4mrem/year. If the action level were exceeded, individual analysis for specific Beta emitting isotopes would be required.

¹⁵ Values from 10 CSR 20-7.031 Table A Criteria For Designated Use (Class III Waters) is used as a guide. These apply to waters designated for drinking water supply. Coldwater Creek is NOT used for a drinking water source.



US Army
Corps of Engineers
St. Louis District

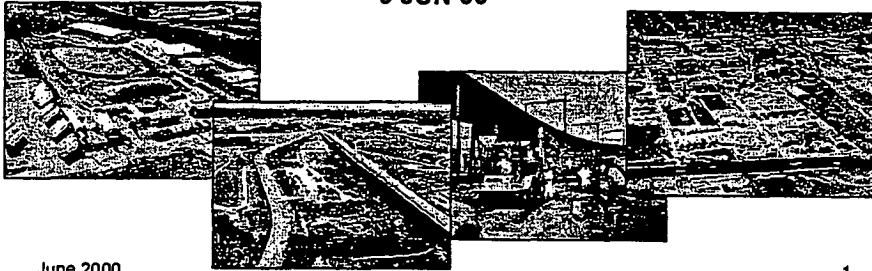
FUSRAP



Gateway to Excellence

St. Louis Oversight Committee Meeting *Corps Update*

9 JUN 00



June 2000

1



US Army
Corps of Engineers
St. Louis District

Agenda



Gateway to Excellence

- **Mississippi Valley Division**
- **Progress Report**
- **Community Interactions**
- **Taskers**
- **Questions**

June 2000

2

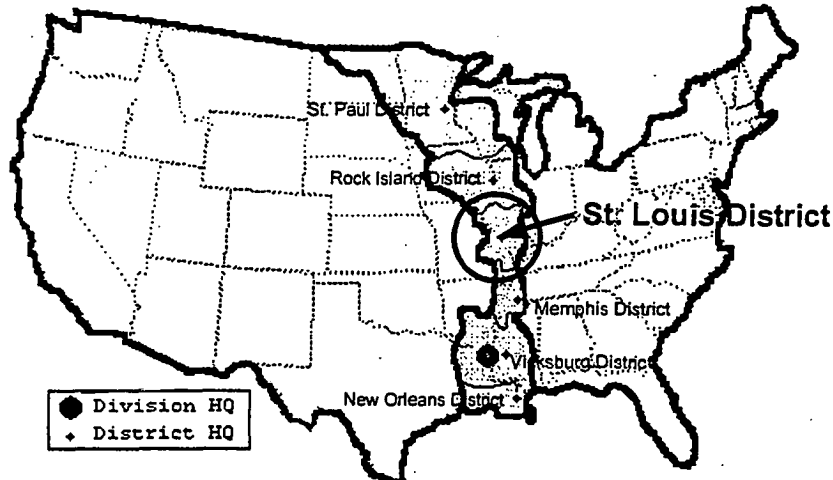


US Army
Corps of Engineers
St. Louis District

Mississippi Valley Division



Gateway to Excellence



3



US Army
Corps of Engineers
St. Louis District

Progress Report St. Louis Airport Site (SLAPS)



Gateway to Excellence

- **Remedial Design**
 - **East End Extension**
 - Pre Design Investigation continues in area adjacent to McDonnell Blvd.
 - Split into East End, McDonnell Right of Way (ROW) and Railroad ROW
- **Remedial Action at Radium Pits - 51% excavated**
 - **Progress continues. 17,157 cyds excavated and disposed of to date**
 - 30,000+ cyds of material are expected to be removed.
 - No blending is currently ongoing.
 - Contained water from last rain event is currently being treated prior to release. High levels of U were encountered in the first tank (3,000 pCi/g).
 - **Rail Shipments off SLAPS**
 - 267 gondola railcars & 89 intermodals shipped to date in FY 00 (22,397 cyds)
 - All sites were slowed this past month due to a 10 day delay in receiving site railcars from Envirocare

June 2000

4



US Army
Corps of Engineers
St. Louis District

Progress Report Radium Pits Update



Gateway to Excellence

- **Average activity of shipped material (all railcars) is 237.27 pCi/g (This number changes with each shipment)**
- **Event**
 - On 12 MAY, an unauthorized member of the public entered a posted RESTRICTED area on SLAPS. The individual, who was reporting for his first day of work at Boeing, got off a bus at McDonnell Blvd, entered the west gate of SLAPS and decided to take a shortcut across the parking lot. Heading east, he ducked under the magenta and yellow rope and continued walking. He was spotted and stopped by S&W personnel. On his walk, he passed more than 10 radiation area signs, DO NOT ENTER signs and the Project Sign before being stopped by site personnel.
- **Corrective Action**
 - The individual was cooperative and voluntarily submitted to a survey of his shoes and clothing by a Health Physics Technician. He was scanned clean and his shoes were visibly contaminated. S&W disposed of the shoes, purchased a new pair for the individual and took him to his new job.
 - Additional signs were posted at all site entry points and larger WARNING signs have been posted.

June 2000

5



US Army
Corps of Engineers
St. Louis District

Progress Report Hazelwood Interim Storage Site (HISS)/Latty Avenue



Gateway to Excellence

- **HISS Eastern & Railspur Spoils Pile Removal**
 - Contractor has completed removal action
 - Eastern and Railroad spur piles have been removed and shipped.
 - All soil was sent to Envirocare
 - Contractor is currently doing site restoration activities.
 - FY00 removal is 15,800 cyds to date
 - **Supplementary Pile Plans and Specifications due finalized**
 - This will be an 8aWOB contract to remove approximately 5,000 cyds
 - It is expected that the contract package will be forwarded to the contractor for a proposal by the end of JUN

June 2000

6



US Army
Corps of Engineers
St. Louis District

Progress Report SLAPS Vicinity Properties



Gateway to Excellence

- **Remedial Design**
 - Pre Design Investigation report complete for VP's 9/10/11/12.
 - The design is currently scheduled to be complete by 30 SEP 00
- **Remedial Action**
 - VP38 (SUPERVALU) remediation - 1 MAR start (1,500 cyds)
 - 3,940 cubic yards were shipped to Envirosafe, an additional 2,200 cyds were stockpiled and covered behind the HISS Supplemental Pile.
 - The bottom of the excavation is being verified and backfill is expected to start by 15 JUN 00.
 - Contamination remains on VP38 on the N wall (Towards Supervalu). It was separated from clean material with geomembrane fabric.
 - Construction was ceased due to funding and the schedule for relocation of the Project Trailers to facilitate the Supplemental Pile removal.

June 2000

7



US Army
Corps of Engineers
St. Louis District

Progress Report St. Louis Downtown Site (SLDS)



Gateway to Excellence

- **Remedial Design**
 - Plant 6E/ 6E1/2 90% (@ 3500 cyds) Remedial Design status
 - Rev 0 awaiting final USACE response to comments
 - Pre Design Investigation sampling is complete for SLDS Vicinity Properties - bounding sampling is ongoing at PVO / Gunther Salt
- **Remedial Action**
 - Plant 2 is - 99% complete, 10,210 cyds excavated, 1 cyd remains.
 - Current completion is 23 JUN, PRAR due 23 AUG
 - West half of site is paved to final grade
 - Site is 95% backfilled. Contractor is completing sewer tie in
 - Plant 1 preparatory work will begin in early-JUL
 - Currently doing REV 1 for P&S. A slide rail shoring system will replace sheetpiling. This reduces vibration to adjacent buildings and can be done concurrently with excavation
- 4,750 cyds shipped this FY (58 railcars) / 8,500 scheduled

June 2000

8



US Army
Corps of Engineers
St. Louis District

Progress Report Other Issues



Gateway to Excellence

- **North County Feasibility Study/ Proposed Plan**
 - Went to D.C. to present our position paper - HQ/CX/MVD participated
 - USEPA requested an updated schedule from MVS
- **Requested funding, \$7.257 million received - site has \$51.5 million**
 - Received \$4.007 for St. Louis Sites on 4 FEB
 - Received an additional \$2 million for SLAPS on 10 MAY
 - Received an additional \$1.25 million for LATTY on 6 JUN
- **DoE Program POC's interactions - none**
- **Boxer / Buttonwillow Congressional Hearing**
 - Not rescheduled to date
- **Site trailer move will impact location of JUL/ AUG meeting**
 - Reserve a room at the Hazelwood Civic Center

June 2000

9



US Army
Corps of Engineers
St. Louis District

Community Interactions



Gateway to Excellence

- **Recent Events**
 - Provided a guest speaker to Washington University Environmental Sciences class on 7 JUN.
 - Craig Cheatham from Channel 4 showed up on SLAPS for an interview on the Radium Pits the afternoon of 7 JUN.
 - Update website in JUN.
 - Summer newsletter will be published in JUL.
- **Upcoming Events**
 - None at this time

June 2000

10



US Army
Corps of Engineers
St. Louis District

Taskers



Gateway to Excellence

- **Old Taskers**
 - Provide the gallons per minute (gpm) that our treatment plant on SLAPS can treat water to Mr. Frauenhoffer. (50 gpm - Complete)
 - Provide the rate of flow for discharge into Coldwater Creek for treated water from the treatment plant. (50 gpm - Complete)
 - MDNR to provide sample results from sampling conducted in Coldwater Creek (Pending - Eric Gilstrap)
- **New Taskers**

June 2000

11



US Army
Corps of Engineers
St. Louis District

Questions



Gateway to Excellence

Questions? Questions? Questions?
Questions? Questions?
Questions? Questions?
Questions? Questions?
Questions? Questions?

June 2000

12

Cataloging Form

{Technical/Project Managers fill in C through Q. RM completes other fields}

A. Document ID Number: Assigned by database 00-179

B. Further Information Required? ☐

C. Operable Unit (Choose One):

USACE ☒
St. Louis Sites ☐
Downtown ☐
North County ☐
Madison Sites ☐
Inaccessible Areas ☐
PRP ☐
Oversight Committee ☒

D. Site (Optional):

SLDS VPs ☐
Mallinckrodt ☐
SLAPS ☐
SLAPS VPs ☐
CWC ☐
HISS ☐
Madison ☐

E. Area (Optional):

F. Primary Document Type (Choose One):

Site Management Records ☐
Removal Response ☐
Remedial Investigation ☐
Feasibility Study ☐
Record of Decision ☐
Remedial Design ☐

Remedial Action ☐
Public Affairs/Community Relations ☒
Congressional Relations ☐
Freedom of Information Act ☐
Real Estate ☐
Project Management ☐

G. Secondary Document Type (see back of form): Public Meeting Minutes

H. Bechtel Number:

I. SAIC Number:

J. MARKS Number(Choose One): FN: 1110-1-8100e ☐ FN: 1110-1-8100f ☐ FN: 1110-1-8100g ☐

K. Subject/Title:

FUSRAP Oversight Committee

L. Author:

Richard Cavanagh

M. Author's Company:

Chapman

N. Recipient(s):

Distribution Oversight Committee

O. Recipient(s) Company:

Oversight Committee

P. Version (Choose One): Draft ☐

Final ☒

Q. Date:

6-9-00

R. Include in the ARF? ☐

S. Include in the AR? ☐

T. Filed as Confidential/Privileged? ☐

U. Document Format (Choose one):

Paper ☒
Electronic ☐

Photographic ☐
Audio-visual ☐

Cartographic/Oversize ☐
Microform ☐

V. Filed in AR Volume Number:

W. Physical Location (Choose One):

Central Files ☒
Records Holding Area ☐

Microfilm Vendor ☐
Department of Energy ☐

In ARF ☐
In AR ☐

X. Associated with Document(s):