

**ST. LOUIS FUSRAP OVERSIGHT COMMITTEE**

*c/o 111 So. Meramec*

*Clayton, MO 63105*

*314/615.1635*

*Ric\_Cavanagh@Stlouisco.com*

*11/02/01*

**MEMORANDUM**

TO: St. Louis FUSRAP Oversight Committee  
Other Interested Parties

FROM: Richard R. Cavanagh, CHE  
Chairperson

RE: Next Meeting

The next meeting of the St. Louis FUSRAP Oversight Committee will be held on Friday, November 9, 2001, 11:30 am, at the trailers on Latty Ave.

Committee members who cannot attend, please contact the Chairperson at the above numbers to be excused.

**Committee members: please bring your calendars with you so that we can schedule a late afternoon meeting prior to Thanksgiving. Anna Ginsberg and I have met to discuss how we as a committee can increase public awareness of some of the issues relating to clean up standards and long term stewardship. We would like the full committee's input into this effort. The extra meeting will be to discuss these issues.**

Thank you.

:RRC

**ST. LOUIS FUSRAP OVERSIGHT COMMITTEE**

*c/o 111 So. Meramec*

*Clayton, MO 63105*

*314.615.1635*

*Ric\_Cavanagh@Stlouisco.com*

**Summary of October 12, 2001 Meeting**

Committee Members Present: Sally Price, Jim Grant, Tom Binz, Tom Manning, Jan Titus, Ric Cavanagh

Other Interested Parties: Jack Fraenhoffer, Larry Erickson, Eric Gilstrap, JoAnne Wade, Lou Dell'Orco, Sharon Cotner

The following comments are in addition to the information in the handouts provided by USACE (see attached).

Page 4 - SU = survey units; The Site Wide Grading Plan has been approved per Jan Titus. Rail Shipments reflect the new fiscal year.

Page 5 - Once the main pile is gone, the property can be returned to Jarbow and therefore save property lease costs left over from the DOE era of control of the property. Sally Price commented that the Committee needs to begin to address clean up standards. HISS has not been fully remediated. Chairperson Ric Cavanagh commented that, in addition, the North County ROD must address Long Term Stewardship issues that also must be discussed by the Committee. (EPA as stated that henceforth they will not sign off on a ROD without a Long Term Stewardship Plan being in place). **The Chairperson agreed to contact co-chair Anna Ginsberg from the City of St. Louis and plan for additional meetings of the Committee to address these issues.**

Page 7 - DT-10, Thomas and Proetz, does not want a partial clean up and USACE cannot afford to do a complete clean up at this time. DT-18 has a similar issue. USACE is investigating what legal recourse they may have at this time. **This is another issue that needs to be taken up by the Committee in its additional meetings.** DT-12: the railroad's hang up is the issue of indemnification.

Page 8 - Lou Dell'Orco stressed that any Committee member is welcome to attend Long-Term Stewardship meetings. The Committee chairperson has been attending these meetings. The next LTS meeting is Thursday, October 25, 3pm at the trailers on Latty Ave.

Page 12 - Last year's St. Louis budget was \$61 million. The project is currently functioning under a continuing resolution. It is possible that FUSRAP might get additional funding to hire contractors as part of the effort to stimulate the economy.

Page 15 - In response to the Committee's question, the cost to the Project for the audit was approximately \$50,000.

The Committee agreed to the following

- 1) Members should review the Task Force report and familiarize themselves with the recommended clean up standards.
- 2) USACE needs to brief the Committee on the Health Risk protocols utilized in developing the proposed clean up standards in the North County ROD.
- 3) Consideration should be given to trying to invite previous Task Force members to future Oversight Committee meetings and future public hearings on the ROD.
- 4) Need to educate the public again about the issues involved in this process and the concerns about Long Term Stewardship.
- 5) The Committee membership needs to be reviewed and any vacancies filled.

NEXT MEETING  
Friday, November 9, 2001  
11:30 am  
At the Trailers on Latty Ave.



US Army  
Corps of Engineers  
St. Louis District

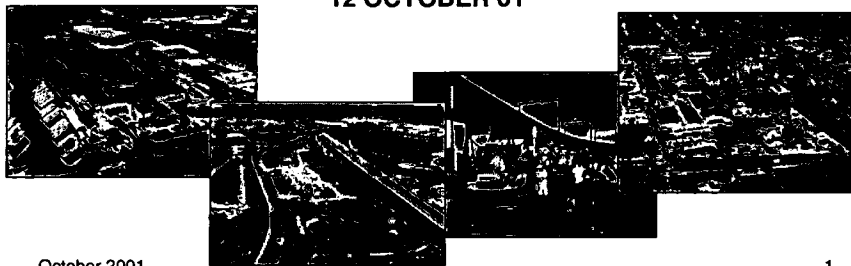
# ***FUSRAP***



Gateway to Excellence

## **St. Louis Oversight Committee Meeting *Corps Update***

12 OCTOBER 01



October 2001

1



US Army  
Corps of Engineers  
St. Louis District

## **Agenda**



Gateway to Excellence

- **Mississippi Valley Division**
- **Progress Report**
- **Community Interactions**
- **Taskers**
- **Questions**

October 2001

2

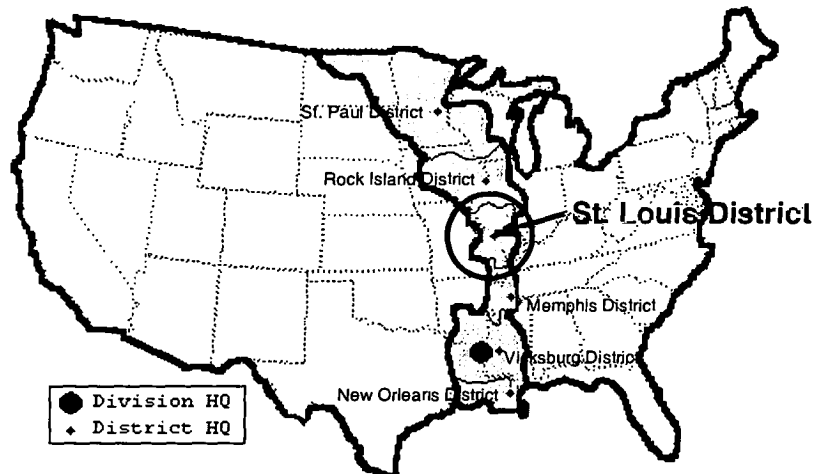


US Army  
Corps of Engineers  
St. Louis District

## Mississippi Valley Division



Gateway to Excellence



3



US Army  
Corps of Engineers  
St. Louis District

## Progress Report St. Louis Airport Site (SLAPS)



Gateway to Excellence

- **Remedial Design**
  - Design Basis Memorandum for Phases 4 / 5 / 6 (IA1 / 6) - Due 19 OCT
  - Work Description for Phases 4 / 5 - 60% due in JAN
    - Site Wide Grading Plan - Awaiting response from Airport Authority after 19 SEP meeting.
- **Removal Actions**
  - **East End - Excavation ongoing in the East End**
    - The contractor is currently excavating at SU10 and 13 and shipping stockpiled soils.
      - SU 11 and 12 are currently being backfilled
      - Two SU's, adjacent to the Radium Pits, will remain and be addressed in Phase 1 (IA5) next summer
    - 65,000 cyds expected, 43,715 cyds shipped to date, 17,000 cyds stockpiled
      - Approximately 60,000 cyds have been excavated to date.
  - **Status of water treatment system**
    - System is undergoing performance testing to ensure it meets contractual specifications.
  - **USACE had an exceedance for settleable solids (4.0 mL/L/hr recorded vs. 1.5 limit) after a rain event on 18 SEP at Outfall 003 (Adjacent to McDonnell Blvd in remediated portion of the East End)**
    - Silt fences could not handle the storm flow and clean backfill was washed into the outfall created the exceedance. The silt fences were reinstalled. USACE will establish the final grade and turf to rectify the situation for the long term.
  - **Rail Shipments off SLAPS**
    - October 2001 - 3,804 cyds shipped to date / 50,000 planned.

4



US Army  
Corps of Engineers  
St. Louis District

## Progress Report Hazelwood Interim Storage Site (HISS)/Latty Avenue



Gateway to Excellence

- **Remedial Design** - None at this time
- **Removal Actions**
  - **Main Pile North Half - 7,000 cyds**
    - Contractor began work 10 SEP, removal is expected to be complete 19 OCT
    - Contractor is currently finishing loadout, decontaminating equipment and grading the site
    - 6,600 cyds shipped to date, 7,000 cyds expected
  - **GIFREHC - Roof Replacement**
    - MVS will support GIFREHC contractor by conducting radiological support, transportation and disposal associated with the roof removal.
    - Replacement work begins on 15 OCT. Expect to work 22 days for Phase I, Phase II will be in the spring and is expected to take 41 working days.
    - 4,000 cyds are expected
  - **Rail Shipments off HISS**
    - 749 cyds shipped to date / 5,000 cyds planned

October 2001

5



US Army  
Corps of Engineers  
St. Louis District

## Progress Report SLAPS Vicinity Properties



Gateway to Excellence

- **Data Evaluation**
  - Assessment of the 30 DoE remediated properties.
    - Regulator review comments received. Currently working responses.
- **Characterization Surveys / Remedial Design**
  - **Continue to gain and renew real estate access to properties to obtain walkover and sampling data for Plans and Specifications in FY01**
    - 56/57/58/59/1C & Pershall & I-270 ROW (@2,000 cyds) - 60% design working
    - 9/10/11/12 & Hotspots in the ballfields and IA 10 - 90% design submitted - on hold
- **Working with MoDOT for work to be done at Pershall / I-170**
  - Awaiting archived samples for analysis
- **MVS met with the St. Louis County Highways and Traffic to discuss remediation of areas under the shoulder of McDonnell Blvd. A new permit request was submitted.**
  - 7 areas under the shoulder, from 3 to 5 feet deep, have been identified.
  - SLCH agreed to let USACE remediate these areas up to the edge of pavement
- **Remedial Action - None to date**
  - **Rail Shipments of VP soils (Shipped from HISS)**
    - 700 cyds planned; however, based on funding / utility work, the number could increase

October 2001

6



US Army  
Corps of Engineers  
St. Louis District

## Progress Report St. Louis Downtown Site (SLDS)



Gateway to Excellence

- **Thomas and Proetz (DT-10)** - Does not want a partial remediation (some contamination is under working areas within the property)
- **Collins (DT-18)** - Does not want the USACE to remediate
- **Burlington Northern RR (DT-12)** - Wants provisions for access that the USACE will not agree to.
- **Remedial Investigation** - USACE beginning Groundwater Remedial Action Alternatives Assessment
- **Remedial Design**
  - **Pre Design Investigation** - Mallinckrodt West, Plant 7N/7S, Christiana, Star Bedding and Thomas / Proetz Lumber are currently pending or under review
  - **Work Description for Small Area Remediation - REV 0 published 4 MAY**
    - McKinley Bridge, Guittier Salt working. PSC Metals, Heintz Steel complete
- **Remedial Action**
  - **Plant 2 PRAR regulator review comments received. Working response.**
  - **Plant 1 continues (@3,500 cyds) - 3,533 cyds remediated to date**
    - Current completion date is DEC 01. 2 small areas remain. Delay due to chasing Thorium
  - **Plant 6E / 6E1/2 (15,000 cyds) began 3 DEC - 10,573 cyds remediated to date**
    - Phase I excavation continues. Completion date is FEB 02 due to Plant 1 delays.
  - **VP's - Midwest Waste (1,500 cyds) - 1,695 cyds removed to date. 80% complete.**
  - **Rail Shipments off SLDS**
    - 71 cyds shipped / 15,000 planned

7



US Army  
Corps of Engineers  
St. Louis District

## Progress Report Other Issues



Gateway to Excellence

- **North County Feasibility Study/ Proposed Plan**
  - Document is currently at HQ, CX and MVD for modified review. Comments due 12 OCT
  - FS/PP regulator review is the next step.
- **Long Term Stewardship**
  - Next LTS Meeting is 25 OCT. Plan outline development is ongoing.
- **FUSRAP Internal Budget Program Review will be held in St. Louis 24/25 OCT**
- **DoE Program POC's interactions -**
  - None at this time
- **The Army Audit Agency continues their audit of our FUSRAP**
  - The second audit, focused on Transportation and Disposal, continues. Our response to the first audit comments were recently forwarded back to AAA.

October 2001

8



US Army  
Corps of Engineers  
St. Louis District

## FY01 Highlights



Gateway to Excellence

- Removed over 114,000 cyds, 33,000 more than the baseline and disposed of nearly 89,000 at an out of state disposal facility
- Shipped 1,100 railcars from the St. Louis Sites
- Executed the \$61 million program at 99%, 109% of our baseline budget of \$55 million. Took in and expended an additional \$6 million over our initial budget.
- Completed the removal of all but a small portion of the pile removal at HISS with an 8a WOB contractor.
- Developed and distributed 4 newsletters to inform the public - briefed organizations, conferences and special interest groups.
- The site laboratory savings were a finalist for the Secretary of Defense Productivity Award. Savings = \$1.9 million per year
- Developed a cost effective solution for Se contaminated water
- Made significant progress in updating the North County FS/PP
- Began the LTS process

October 2001

9



US Army  
Corps of Engineers  
St. Louis District

## Final FY01 Volumes



Gateway to Excellence

Site	FY01 Program (cyds)	FY01 Actuals (cyds)
SLAPS	55,000	45,147 (D) 21,000 (S)
SLDS	7,500	11,756 (D) 4,900 (S)
HISS / Latty	18,500	32,078
VP's	0	0
Totals	81,000	88,982 (D) 25,900 (S) 114,882 Total

D = Disposed, S = Stockpiled

1,100 Railcars were shipped from the St. Louis Sites

October 2001

10



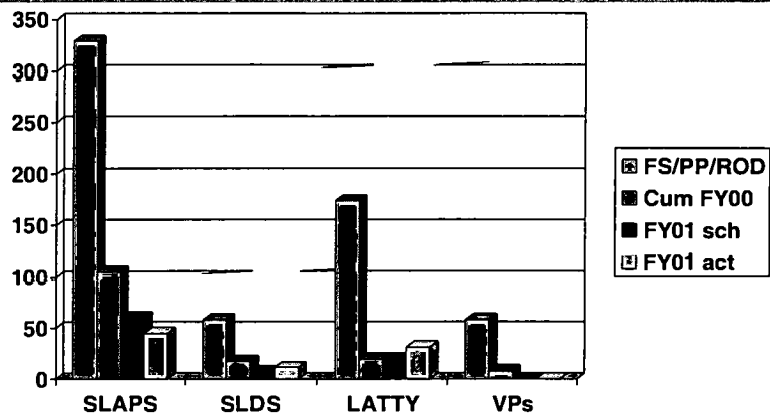


US Army  
Corps of Engineers  
St. Louis District

## FY 01 Volume Shipped Using Environmental Documents



Gateway to Excellence



Note 1. North County volumes are based on the North County FS/PP

Note 2. All volumes are exsitu. Exsitu volume = Insitu volume + 20% for excavation and 25% for swell prior to Transportation and Disposal

Note 3. CLD3 volumes do not include Inaccessibles

October 2001

11



US Army  
Corps of Engineers  
St. Louis District

## FY02 Budget



Gateway to Excellence

Site	FY 02 Budget	FY02 Est. Disposal (cyds)
SLAPS	26,970,000	50,000
SLDS	17,500,000	15,000
HISS / Latty	6,000,000	5,000
VP's	2,000,000	700
Total	52,470,000	70,700

October 2001

12

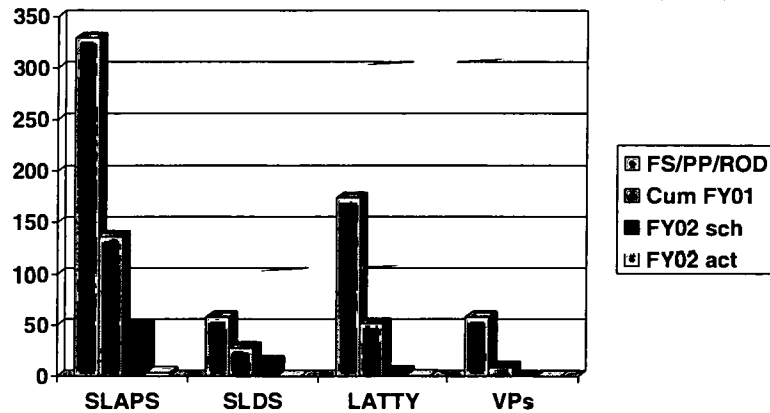


US Army  
Corps of Engineers  
St. Louis District

## FY 02 Volume Shipped Using Environmental Documents



Gateway to Excellence



Note 1. North County volumes are based on the North County FS/PP

Note 2. All volumes are exsitu. Exsitu volume = Insitu volume plus 20% for excavation and 25% for swell prior to Transportation and Disposal

Note 3. SLDS volumes do not include Inaccessibles

October 2001

13



US Army  
Corps of Engineers  
St. Louis District

## Community Interactions



Gateway to Excellence

- Recent Events
  - None
- Upcoming Events
  - Publish Newsletter

October 2001

14



US Army  
Corps of Engineers  
St. Louis District

## Taskers



Gateway to Excellence

- **Old Taskers**
  - Will SLOC be able to review the AAA report or will it be classified as an internal review document? (Working - Awaiting AAA response)
  - How much has the AAA audits cost in terms of dollars (Working - MVS tracking cost)
  - Provide maps in the trailers for the SLDS property and SLAPS phases. (Complete)
  - Provide the Oversight Committee a briefing on the FS/PP when appropriate (Working)
- **New Taskers**

October 2001

15



US Army  
Corps of Engineers  
St. Louis District

## Questions



Gateway to Excellence

Questions? Questions? Questions?  
Questions? Questions?  
Questions? Questions?  
Questions? Questions?  
Questions? Questions?  
Questions? Questions?

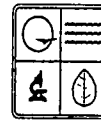
October 2001

16



# Missouri Department of Natural Resources Hazardous Waste Program

Federal Facilities Section  
FUSRAP/ SLAPS



## Report on SLAPS Outfall 3 and the September 17, 2001 Settleable Solids Exceedance

### I. Introduction

Outfall 3 is the sampling location for stormwater drainage for the east end of the SLAP site. On September 17<sup>th</sup>, a large storm event washed soil into the outfall resulting in an exceedance for Settleable Solids parameters, despite pollution prevention measures.

**Pollutants reaching Coldwater Creek, radiological or otherwise, is not likely for the following reasons:**

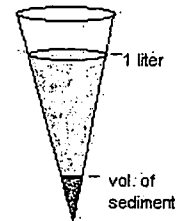
- Accessible contamination had already been removed and the drainage area was under restoration. The soil that washed into the outfall was "clean" fill.
- The ditch between outfall 3 and Coldwater Creek had haybales, tall grass, and shrubs to slow the flow and collect sediment.

### II. Definitions

**Settleable Solids** is the amount of solid matter that will fall out of a liquid in an hours time.

**The analysis** is simple. A one liter sample of stormwater is poured into a graduated cone glass. After one hour, the amount solids settled in the bottom is measured.

**State standards** include a daily maximum value of 1.5 milliliter/liter/hour (ml/l/hr) and a monthly average of 1.0 ml/l/hr. Exceeding these values triggers the steward of the property to investigate the source of the problem and to try to correct it. High contributions of sediment to a stream can effect its quality, especially if that sediment carries other pollutants with it.



### III. The Exceedance

**Date:** September 17, 2001

**Place:** SLAPS Outfall 3

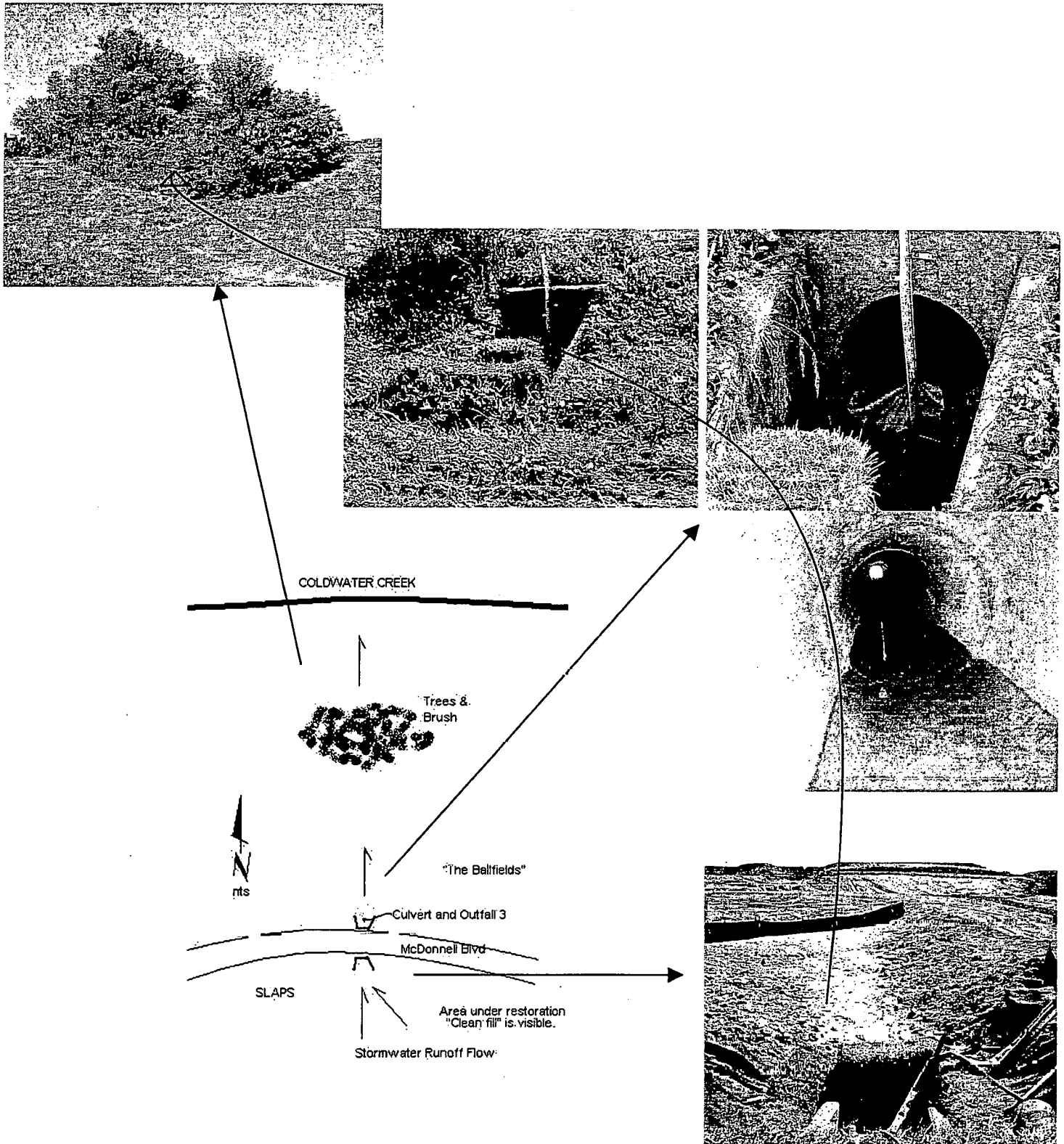
**Parameter and Result:** Settleable Solids = 4ml/l/hr

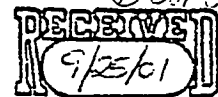
**Misc:** A test was conducted on a second sample collected on September 18, 2001. These results were below the monthly average requirement. Please refer to the introduction for comments related to potential impact to Coldwater Creek.

**IV. Corrective Action.** The USACE has planned the following actions:

- Remove sediment that has collected in the culvert preceeding outfall 3.
- Complete discussions with the property owner, Lambert International Airport, regarding plans for the restoration effort.
- Finish filling and seeding the drainage area.

V. Site sketch and photos.





314-231-9343  
FAX 314-231-0313

HARDWOODS • ALL DOMESTIC  
CANADIAN

ESTABLISHED 1896

3400 HALL STREET  
ST. LOUIS MO 63147

YARDS: ST. LOUIS MO  
AND NASHVILLE, IL

September 21, 2001

Department of the Army  
St. Louis District, Corps of Engineers  
Attention: Sharon R. Cotner  
FUSRAP Program Manager  
8945 Latty Avenue  
Berkeley, MO 63134

Dear Ms. Cotner:

In response to your letter we have your detailed report on contamination in our area. Although I do not understand all the technical aspects of this report, I do find that there are apparently several areas of our property that you propose to remediate. There are also several areas you were unable to test because of buildings or equipment. My conclusions are as follows:

1. Our business would greatly suffer if you were to remediate all proposed areas.
2. Remediating all proposed areas would not completely clear our property since some areas can't be remediated.
3. Remediating only the few that would not greatly disrupt our business does little to solve the overall problem.
4. This so-called radiological contamination has been in our area over fifty years so why remove it unless it is the only way to clear the property for sale. We have been at this site nearly 100 years and no sale is imminent.



5. When and if this remediation seems pertinent to our cause we would seek same, but do not see the need at this time.

Sincerely,

THOMAS & PROETZ LUMBER COMPANY

A handwritten signature in cursive script, appearing to read "Ed Thomas".

E. R. Thomas, Jr.  
President

ERTJR:jlm

# FUSRAP Document Management System

Year ID  
00 2855

Further Info?  
☐

Operating Unit  
St. Louis Sites

Site

Area

MARKS Number  
FN:1110-1-8100g

Primary Document Type  
Public Affairs/Community Relation

Secondary Document Type  
Public Meeting Minutes/Transcripts

## Subject or Title

St. Louis Oversight Committee Minutes from the October 2001 (10/12/01) Meeting

Author/Originator  
Richard Cavanagh

Company  
St. Louis County DOH

Date  
11/2/2001

Recipient(s)  
Distribution

Company (-ies)

Version  
Final

Original's Location  
Central Files

Document Format  
Paper

Confidential File?  
☐

## Comments

SAIC number

Bechtel ID

## Include in which AR(s)?

- ☒ North County
- ☐ Madison
- ☐ Downtown
- ☐ Iowa

ETL  
8.10

Filed in Volume  
8

