



2007
SHELBYVILLE LAKE
WATER QUALITY
REPORT



U.S. ARMY CORPS OF ENGINEERS, ST. LOUIS DISTRICT
ENVIRONMENTAL QUALITY SECTION – WATER QUALITY

Table of Contents

Water Quality Report-Shelbyville Lake

Section and Page No.

1.0 GENERAL OVERVIEW.....	pg. 1
2.0 WATER QUALITY ASSESSMENT CRITERIA	pg. 4
3.0 SUMMARY OF MONITORING RESULTS.....	pg. 8
4.0 PLANNED 2007 STUDIES	pg. 11

List of Figures & Tables

Figure 1: Lake Map.....	pg. 3
Table 2.1 State of Illinois - Water Quality Standards.....	pg. 4

Appendix

Appendix A: Data	pg. A1-A10
Appendix B: Laboratory Data Graphs	
Fecal Coliform	pg. B1
Metals (Iron & Manganese).....	pg. B2
Nitrogen (NH ₃ -N & NO ₃ -NO ₂).....	pg. B3
Orthophosphate & Total Phosphage	pg. B4
Chlorophyll & Pheophytin.....	pg. B5
Pesticides.....	pg. B6
TSS & VSS	pg. B7
TOC.....	pg. B8
Appendix C: Field Data Graphs	
Temperature & DO	pg. C1-C2
pH.....	pg. C3-C5
Redox & Conductivity	pg. C6-C9
Secchi.....	pg. C10

WATER QUALITY MONITORING PROGRAM

1.0 GENERAL OVERVIEW

This report summarizes water quality activities of the St. Louis District for Fiscal Year 2007 in accordance with ER 1110-2-8154 Water Quality & Environmental management for Corps Civil Works Projects and ETL 1110-2-362 Environmental Engineering Initiatives for Water Management.

Water quality monitoring remains one of the Sections major responsibilities. The objective is to maintain a reasonable environmental monitoring program for the Mississippi River and the 5 lakes under the St. Louis District's control. The District's reservoirs consist of Mark Twain and Wappapello Lakes in Missouri, and Shelbyville, Carlyle and Rend Lakes in Illinois. Water quality sampling is conducted within the lakes and their tributaries to establish trend analysis and maintain water quality at or above state and federal regulations.

The main objective is to provide technical expertise of an environmental nature to all Corps elements requesting assistance in accordance with ER 1110-2-8154. This would include updating the water quality management priorities for the district's projects to ensure water quality meets the state and federal regulations, for protection of human health and the environment, and for the safety and economic welfare of those at Corps projects. Ongoing goals include ensuring that downstream water quality meets all state and federal regulations, is suitable for aquatic and human life, and continue to evaluate trend analysis in relation to baseline conditions at all projects.

Water quality data is provided to the Illinois Environmental Protection Agency (IEPA) to be used in the Illinois Integrated Water Quality Report which is required every two years by the Clean Water Act Sections 303(d) and 305(b). IEPA does not typically monitor the three Corps lakes in Illinois. However, IEPA has stated that since the Corps lakes are the 3 largest lakes in the state, it is critical that their quality be routinely assessed. The state indicated that having the federally collected water quality data available now and in the future is critical to the state of Illinois meeting their mission in complying with the Clean Water Act Sections 305(b) and 303(d).

The National Water Quality Inventory Report to Congress 305(b) report is the primary vehicle for informing Congress and the public about general water quality conditions in the United States. This document characterizes our water quality, identifies widespread water quality problems of national significance, and describes various programs implemented to restore and protect our waters.

Under Section 303(d) of the 1972 Clean Water Act, states, territories and authorized tribes are required to develop a list of water quality limited segments. These waters on the list do not meet water quality standards, even after point sources of pollution have installed the minimum required levels of pollution control technology. The law requires that these

jurisdictions establish priority rankings for water on the lists and develop action plans, called as Total Maximum Daily Loads (TMDL), to improve water quality.

Currently the Illinois Environmental Protection Agency (IEPA) has listed Shelbyville Lake impaired for Total Suspended Solids and aquatic plants. The lists of sources for these impairments are runoff, crop production, shore modifications, and recreational pollution. Continued monitoring of the lake and its tributaries is vital in assisting the future assessment of the lake for these and other possible impairments. The water quality monitoring program represents the single metric that encompasses the overall health of the watershed as it is a direct measure of how well the environmental stewardship programs are working.

1.1 INTRODUCTION

Shelbyville Lake is within the Kaskaskia River basin in central Illinois. The lake serves as a heavy recreational usage lake. The land surrounding the lake is used predominately for agriculture. Surrounding communities have existing industrial/commercial operations and residents which discharge wastewater into municipal wastewater treatment plants which ultimately discharge treated water into the Kaskaskia River basin. Agricultural runoff and municipal wastewater treatment facilities are the primary potential source of pollution into the Shelbyville Lake watershed. Additional sources are marinas, recreational watercraft discharges and wildlife fecal material runoff.

Water quality monitoring was conducted during 2006 to assure the safe conditions for human recreation, wildlife and aquatic life was maintained and managed within the lake system. The 2006 water quality monitoring program began in March and continued through September. During each sampling period one site was selected for quality control duplication and denoted as SBV-15. The locations of the six sampling sites are depicted on the lake map in Figure 1.

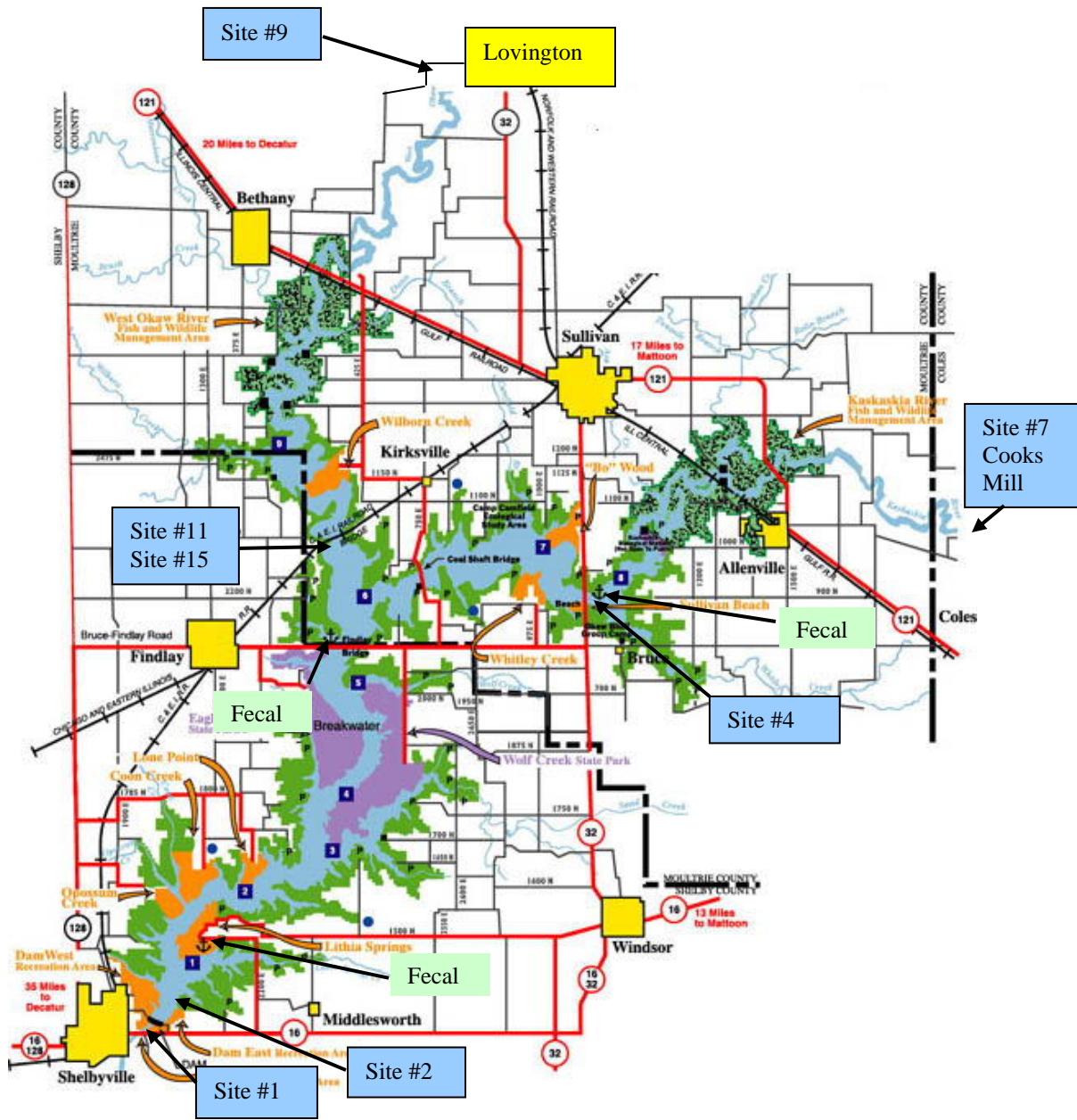


Figure 1
Location of sample sites

2.0 WATER QUALITY ASSESSMENT CRITERIA

2.1 Water Quality

The water quality assessment criteria were based upon the State of Illinois regulatory limits for certain contaminants, which has been generally accepted criteria for sustaining adequate aquatic plant and animal growth. The samplings and analysis which were conducted at the Shelbyville Lake sites reflect the minimal set of parameters needed to analyze the current status of water quality for the Shelbyville Lake system.

The following parameters were analyzed in the Fiscal Year 2006 samplings at Shelbyville Lake: Total Organic Carbon (TOC), iron, manganese, ammonia-nitrogen, nitrate-nitrogen, orthophosphate, total phosphate, Total Suspended Solids (TSS), Total Volatile Suspended Solids (TVSS), fecal coliform, pH, temperature, dissolved oxygen, specific conductance, oxidation-reduction potential (ORP), chlorophyll, pheophytin-a, atrazine and alachlor,

The Illinois Environmental Protection Agency in Title 35, Subtitle, C, classifies water quality criteria based on end usage. Subpart B contains regulations for general use water, while subparts C and D delineate those for public and food processing water and secondary contact and indigenous aquatic life standards, respectively. These standards are used to determine the aquatic water quality of the lake. Table 2.1 provides a listing of the regulatory limits for the parameters analyzed where a limit has been established.

PARAMETER	LIMIT
Temperature	Rise of < 2.8°C above normal seasonal temp
Ammonia Nitrogen	< 15 mg/L
Nitrate Nitrogen	10 mg/L
Iron	2.0 mg/L
Manganese	1.0 mg/L
Phosphorous as Phosphate	0.05 mg/L
Fecal Coliform	< 500 colonies/100 ml
pH	Range: 6.5 to 9.0
DO	> 5.0 mg/L
Atrazine	0.003 mg/L (Drinking Water Standard)
Alachlor	0.002 mg/L (Drinking Water Standard)

Nitrogen is an essential component of proteins, genetic material, chlorophyll, and other key organic molecules. All organisms require nitrogen in order to survive. Nitrogen exists in several forms. These forms include gaseous nitrogen (N₂), nitrites (NO₂), nitrate (NO₃), ammonia nitrogen (NH₃-N), and ammonium (NH₄). Ammonia can be toxic to fish and other aquatic organisms at certain levels. Unlike ammonia, ammonium (NH₄) is not toxic to aquatic organisms and is readily available for uptake by plankton and macrophytes. Nitrogen levels

have increased as human activities have accelerated the rate of fixed nitrogen being put into circulation. High nitrogen levels can cause eutrophication. Eutrophication increases biomass of phytoplankton, decrease water transparency, and causes oxygen depletion. Ammonia nitrogen is monitored so that the effects on fish spawning, hatching, growth rate and pathologic changes in gills, liver and kidney tissue can be related to the detected levels of ammonia nitrogen. Nitrate-nitrogen degrades to nitrite or produces ammonia which has a detrimental effect on aquatic life and, therefore, has been monitored to assure levels are below the regulatory "safe" limit.

Phosphate has been analyzed as phosphorus and has been monitored due to the potential for uptake by nuisance algae. Levels of phosphate can indicate the potential for rapid growth of algae (algae bloom) which can cause serious oxygen depletion during the algae decay process. Phosphorous is typically the limiting nutrient in a water body. Therefore, addition of phosphorous to the ecosystem stimulates the growth of plants and algae. Phosphorous is delivered to lakes and streams by way of storm water runoff from agricultural fields, residential property, and construction sites. Other sources of phosphorous are anaerobic decomposition of organic matter, leaking sewer systems, waterfowl, and point source pollution. The general standard for phosphorous in lake water is 0.05mg/L. Dissolved phosphorous also called ortho-phosphorous is generally found in much smaller concentrations than total phosphorous and is readily available for uptake. For this reason dissolved phosphorous concentrations are variable and difficult to use as an indicator of nutrient availability.

The metals manganese and iron are nutrients for both plants and animals. Living organisms require trace amounts of metals. However, excessive amounts can be harmful to the organism. Heavy metals exist in surface waters in three forms, colloidal, particulate, and dissolved. Water chemistry determines the rate of adsorption and desorption of metals to and from sediment. Metals are desorbed from the sediment if the water experiences increases in salinity, decreases in redox potential, or decreases in pH. Metals in surface waters can be from natural or human sources. Currently human sources contribute more metals than natural sources. Metals levels in surface water may pose a health risk to humans and the environment.

Photosynthetic activity can be hindered by the levels of total suspended solids. Total suspended solids concentrations, which cause the photosynthetic activity to be reduced by more than 10% from the seasonably established norm, can have a detrimental effect on aquatic life. Soil particles, organic material, and other debris comprise suspended solids in the water column. Secchi disk measurements are inverse to suspended solid measurements. As the total suspended solids (TSS) increase, the secchi disk depth or water transparency decreases. Total suspended solids can be an important indicator of the type and degree of turbidity. TSS measurements represent a combination of organic (volatile) and inorganic (non-volatile) particles in the water. In order to more accurately determine the types and amounts of suspended solids, volatile suspended solids (VSS) are analyzed. VSS concentration represents the organic portion of the total suspended solids. Organic material often includes plankton and additional plant and animal debris that is present in water. Total volatile solids indicate the presence of organics in suspension and, therefore, show additional demand levels of oxygen.

Chlorophyll and pheophytin-a are monitored to provide indicators of algae growth and, therefore, potential oxygen depletion activity. Chlorophyll is measured in lakes to estimate the

type and amount of algal productivity in the water column. Chlorophyll a is present in green algae, blue-green algae, and in diatoms. Chlorophyll a is often used to indicate the degree of eutrophication. Chlorophyll b and c are used to estimate the extent of algal diversity and productivity. Chlorophyll b is common in green algae and is used as an auxiliary pigment for photosynthesis. Chlorophyll c is most common in diatom species and serves as an auxiliary pigment. Algal productivity and diversity can be determined by the concentrations of the individual pigments. For example high concentrations of chlorophyll a and b would indicate that green algae is abundant. High concentrations of chlorophyll a would indicate abundance of blue-green algae and concentrations of chlorophyll a and c would indicate diatoms are the dominant species. Chlorophyll production is currently being connected with hypoxia.

Fecal coliform bacteria is monitored for the protection of human health as it relates to full body contact of recreational waters. People can be exposed to disease-causing organisms, such as bacteria, viruses and protozoa in beach and recreational waters mainly through accidental ingestion of contaminated water or through skin contact. These organisms, called pathogens, usually come from the feces of humans and other warm-blooded animals. If taken into the body, pathogens can cause various illnesses and on rare occasions, even death. Waterborne illnesses include diseases resulting from bacteria infection such as cholera, salmonellosis, and gastroenteritis, viral infections such as hepatitis, gastroenteritis, and intestinal diseases, and protozoan infections such as ameobic dysentery and giardiasis. The most commonly monitored recreational water indicator organisms are fecal coliform, *Escherichia coli*, (*E. coli*) and enterococci. Fecal coliform are bacteria that live in the intestinal tracts of warm-blooded animals. The standard for fecal coliform is less than 500 colonies per 100ml of sample water. Fecal coliform was originally recommended in 1968 by the Federal Water Pollution Control Administration (predecessor to EPA) as an effective water quality indicator organism for recreational waters. Recent studies indicate that fecal coliform show less correlation to illness than other indicator organisms such as *E. coli* and enterococci. The Environmental Protection Agency (EPA) currently recommends *E. coli* or enterococci as an indicator organism for fresh waters. Although *E. coli* and enterococci are more costly they may become the standard in the near future.

Atrazine and Alachlor herbicides are commonly used agricultural chemicals which can be readily transported by rainfall runoff. Both compounds are suspected of causing cancer and, therefore, were monitored for the protection of human and aquatic health. Organic compounds include many pesticides. A pesticide can be any substance that is intended to prevent, destroy, repel, or mitigate any pest. This includes insecticides, herbicides, fungicides, fumigants, algaecides and other substances. Herbicides which are pesticides used to kill vegetation are the most widely used and sampled. Ten of the most frequently used herbicides and detected in water are Atrazine, Metolachlor, Alachlor, 2,4-D, Trifluralin, Glyphosate, Dicamba, Cyanazine, Simazine, and 2,4,5-T. Two of the most widely used pesticides are Atrazine and Alachlor. Atrazine is a preemergence or postemergence herbicide use to control broadleaf weeds and annual grasses. Atrazine is most commonly detected in ground and surface water due to its wide use, and its ability to persist in soil and move in water. Alachlor is a Restricted Use Pesticide (RUP) due to the potential to contaminate groundwater. The drinking water standard for Atrazine is 0.003mg/L and 0.002 mg/L for Alachlor.

Temperature, dissolved oxygen and pH are monitored for the protection of aquatic life. Temperature is important because it controls several aspects of water quality. Cold water holds more dissolved oxygen which is required by aquatic organisms. Plants grow more rapidly and use more oxygen in warmer water. Decomposition of organic matter which uses oxygen is accelerated in warmer water. Temperature can also determine the availability of toxic compounds such as ammonia. Since aquatic organisms are cold blooded, water temperature regulates their metabolism and ability to survive. The number and kinds of organisms that are found in streams or lakes is directly related to temperature. Certain organisms require a specific temperature range, such as trout, which require water temperatures below 20°C. Most aquatic organisms require a minimum concentration of dissolved oxygen to survive. In spring, surface waters of the lake mix with the water below through wind and thermal action. This mixing diminishes as the upper layer of water becomes warmer and less dense. Solar insolation during the summer months stratifies the lake into three zones. The upper warmer water zone is called the epilimnion and the lower cooler water zone is called the hypolimnion. The epilimnion and the hypolimnion zones are divided by a transition zone known as the metalimnion. The thermocline located within the metalimnion exhibits a rapid change in water temperature. During the summer months the hypolimnion may become anaerobic. In this anaerobic zone, chemical reduction of iron and manganese, or the production of methane and sulfides can occur. Iron rapidly oxidizes in aerobic environments, but manganese oxidizes slowly and can remain in the reduced state for long distances down stream even in aerobic environments. The degree of acidity of water is measured by a logarithmic scale ranging from 0 to 14 and is known as the pH scale. A reading of 7 indicates neutrality and readings below seven are acidic and above are alkaline. Most Illinois lakes range from 6 to 9 on the pH scale. The buffering capacity of water is the ability to neutralize acid better known as alkalinity. A high alkalinity concentration indicates an increased ability to neutralize pH and resist changes, whereas a low alkalinity concentration indicates that a water body is vulnerable to changes in pH.

Conductivity is a measure of a water's ability to conduct an electrical current. The ability to carry a current is often driven by the dissolved materials present in a water column. These materials can include dissolved ions and other materials in the water and thus are directly proportional to the concentration of total dissolved solids (TDS) present in the water column. Typically TDS concentrations represent 50-60% of the conductivity measurements. Conductivity is also affected by water temperature. The warmer the water, the higher the conductivity. Conductivity in streams and rivers is affected by the geology of the area. Streams running through granite areas tend to have lower conductivity due to granite being composed of inert material, materials that do not ionize or dissolve into ionic compounds in water. On the other hand streams that run through areas of limestone or clay soils tend to have higher conductivity readings because of the presence of materials that ionize. Conductivity is useful as a general measure of water quality. A stream tends to have a relatively constant range of conductivity that once established can be used as a baseline. Significant changes either high or low might indicate a source of pollution has been introduced into the water. The pollution source could be a treatment plant which raises the conductivity or an oil spill which would lower the conductivity.

Redox or Oxidation-Reduction Potential (ORP) is a measurement to oxidize materials. Oxidation involves an exchange of electrons between 2 atoms. The atom that loses an electron is

oxidized and the one that gains an electron is reduced. ORP sensors measure the electrochemical potential between the solution and a reference electrode. Readings are expressed in millivolts with positive readings indicating increased oxidizing potential and negative readings being increased reduction. The ORP probe is essentially a millivolt meter, measuring the voltage across 2 electrodes with the water in between. ORP values are used much like pH values to determine water quality. While pH readings characterize the state of a system relative to the receiving or donating hydrogen ions (base or acid), ORP readings characterize the relative state of losing or gaining electrons. The conversion of ammonia (NH_3) requires an oxidating environment to convert it into nitrites (NO_2) and nitrates (NO_3). Ammonia levels as low as 0.002mg/L can be harmful to fish. Generally ORP readings above 400mV are harmful to aquatic life. However, ORP is a non-specific measurement which is a reflection of a combination of effects of all the dissolved materials in the water. Therefore, the measurement of ORP in relatively clean water has only limited utility unless a predominant redox-active material is known to be present.

Water clarity is intuitively used by the public to judge water quality. Secchi depth has been used for many years as a limnological characterization tool for characterizing water clarity. Secchi depth is a measure of light penetration into a waterbody and is a function of the absorption and scattering of light in the water. There are three characteristics of water which affect the penetration of light. The three factors are the color of water, amount of phytoplankton in the water column, and amount of inorganic material in the water column. Secchi depth integrates the combined impacts of all the factors which influence water clarity. Water transparency was measured using a Secchi disk. Secchi disk readings were taken at all lake sites.

2.2 Sediment

In accordance with EM-1110-2-1201, sediment samples should be taken to monitor and assess potential impacts to aquatic and human health. To assess ecological risk, sample values were compared against toxicity information published in the National Oceanic Atmospheric Administrations (NOAA) Screening Quick Reference Tables (SQRT) or similar references for ecological receptors in freshwater sediment. Without standards or other widely applicable numerical tools, NOAA scientists found it difficult to estimate the possible toxicological significance of chemical concentrations in sediment. Therefore, numerical sediment quality guidelines (SQG's) were developed as informal, interpretive tools. The SQGs were not promulgated as regulatory standards, but rather as informal, non-regulatory guidelines for interpreting chemical data from analyses of sediments. For potential ecological risk from inorganic contaminants, seven metals are typically of "most concern" with regards to fish and wildlife: Arsenic, Copper, Cadmium, Selenium, Mercury, Lead, and Zinc. Avian species are thought to be particularly sensitive to arsenic, but is also considered a carcinogenic, mutagenic, and teratogenic contaminant in a variety of species in elevated doses over time. Avian species are also known to be particularly sensitive to lead in the environment with effects ranging from mortality, reduced growth and reproductive output, behavior changes, blood chemistry alterations, and lesions of major organs. Finally, the embryo stages in fish and avian species are known to be the most sensitive life stage to selenium effecting reproductive success.

It is recommended that the next round of sediment samples focus on organochlorines in freshwater sediment to assess potential chronic aquatic impacts (e.g. aldrin, chlordane, endrin, endosulfan, DDT, methoxychlor).

For potential human health risk, there are no known values in Illinois for sediments. While not a direct correlation, sample results were compared against Illinois Tiered Approach to Corrective Action Objectives (TACO) and Non-TACO lowest default target levels for all soil types and exposure pathways for soils.

3.0 SUMMARY OF MONITORING RESULTS

3.1 Water Quality Summary

The seasonal change brought on gradual lake stratification during the summer months. Fecal coli are sampled at the marinas to ensure that the marina areas are not being contaminated by boats with restroom facilities. Bacteria levels for all the marinas were below the Illinois standard of 500 colonies/100ml of sample water for the sampling period, April through September.

Total iron and total manganese are sampled above the dam near the bottom of the channel (SBV-2-10) and in the spillway area (SBV-1). As was previously stated living organisms require trace amounts of metals, however excessive amounts can be harmful to the organism. Iron exceeded the Illinois Standard of 1.0mg/L on July 25 at Site SBV-2-10 and manganese exceeded or nearly exceeded the 0.05mg/L drinking water and ground water standard at both sites SBV-1 and SBV-2-10 during all 4 sampling events. Iron cycling is a function of oxidation-reduction processes. Elevated levels of iron near the bottom of a lake is not immediately detrimental to the overall lake system. Iron oxidizes relatively rapidly (minutes to hours); therefore any iron released through the spillway will be oxidized in a short period of time.

Nitrogen and phosphates are sampled at all sites. The 2007 total phosphate results at all sites are above the 0.05 mg/L standard. Because phosphorous in water is not considered directly toxic to humans and animals no drinking water standards have been established for phosphorous. However, phosphorous can cause health threats through the stimulation of toxic algal blooms and the resulting oxygen depletion. However, nitrates can pose a threat to human and animal health. Nitrate in water is toxic at high levels and has been linked to toxic effects of livestock and to blue baby disease (methemoglobinemia) in infants. The Maximum Contaminant Level (MCL) for nitrate-N in drinking water is 10mg/L to protect babies 3 to 6 months of age. The Illinois Water Quality Standard for ammonia nitrogen (NH₃-N) is 15mg/L. The increased levels of phosphate in combination with nitrogen and other lake conditions, such as temperature, pH and stagnant lake conditions, can lead to increased algae growth. Eutrophication is currently the most widespread water quality problem in the U.S. and many other countries. Restoration of eutrophic waters requires the reduction of nonpoint inputs of phosphorous and nitrogen. The resulting detrimental effects of algae toxins and oxygen depletion could result in health problems for fish and other aquatic species as well as land animals utilizing the water supply. There were no signs of any of these effects throughout 2006.

Chlorophyll *a* was sampled at 4 sites, SBV-2, SBV-4, SBV-11, and SBV-15. Chlorophyll *a* is a green pigment found in plants. Chlorophyll *a* concentrations are an indicator of phytoplankton abundance and biomass. They can be an effective measure of trophic status, and used as a measure of water quality. Chlorophyll levels were relatively low during the 4 sampling events. High levels often indicate poor water quality and low levels suggest good conditions. However, elevated levels are not necessarily bad. It is the long term persistence of elevated levels that is the problem. It is natural for chlorophyll *a* levels to fluctuate over time. Chlorophyll *a* tends to be higher after storm events and during the summer months when water temperatures and light levels are elevated. Chlorophyll can reduce the clarity of the water and the amount of oxygen available to other organisms. Illinois does not currently have a standard for chlorophyll. The data indicates a normal increase in chlorophyll levels during the warmer summer months, which is not a concern.

Atrazine and Alachlor are pesticides that were sampled at all sites. These chemicals are herbicides used to control weed growth. Normally pesticides are detected early in the year, in the months of April and May when farmers apply the chemicals. However, due to the delay in funding, sampling was not initiated until July of this year, therefore missing the best opportunity to capture these chemicals. Pesticides did not exceed the Illinois standards. These substances can enter water bodies as a result of drift during spraying, surface runoff, and leaching through soil. In order to eliminate pesticide contamination of waters it is important for the public to be educated and institute best manage practices when using these chemicals.

Total Suspended Solids (TSS) and Total Volatile Suspended Solids (TVSS) samples are collected at all sites. Solids can affect water quality by increasing temperature through the absorption of sunlight by the particles in the water, which also effects the clarity of the water. This can then effect the amount of oxygen in the water. Illinois does not currently have a standard for TSS or TVSS.

Total Organic Carbon (TOC) is collected at all sites. TOC is an indicator of the organic character of water. The larger the carbon or organic content, the more oxygen is consumed. The highest values for TOC occurred in September. This may be a result of plant material, which had grown all summer and begins to decay. Illinois does not currently have a standard for TOC.

Temperature and dissolved oxygen levels were taken at all sites. Measurements were taken at 1 meter intervals at the lake sites. During the summer months the lake stratifies and a boundary is formed between the upper warmer water and the lower cooler water. This transition area is known as the thermocline, the area where the temperature drops significantly. Oxygen levels can also change drastically as a function of depth. This area where the oxygen level significantly drops is called the oxycline. The depth of the thermocline and oxycline can have an effect on the aquatic organisms. Occasionally the thermocline and oxycline are at or near the same depth.

pH is taken at all sites and at 1 meter intervals at lake sites. All sites were within the 6 to 9 pH range. Variances in pH can be caused by a rainfall event. Another cause may be that photosynthesis uses up dissolved carbon dioxide, which acts like carbonic acid (H_2CO_3) in water. CO_2 removal in effect reduces the acidity of the water thus the pH increases.

Conductivity and redox are taken at all sites and at 1 meter intervals at lake sites. Illinois does not currently have a standard for conductivity or redox. A faulty probe on one of the sondes gave erratic readings for redox during the May sampling event.

The monitoring program for Shelbyville Lake during Fiscal Year 2007 revealed good water quality when compared to limits established by the Illinois Environmental Protection Agency (IEPA) for general use, secondary contact, and indigenous aquatic life. Agricultural nutrient runoffs were primary concerns for the lake's water quality. Better land management practices, erosion control and buffering zones are methods used to reduce such contaminants from entering the lake. The St. Louis District personnel have been working continuously with lake personnel, area communities and other agencies in the implementation of educational programs and implementation planning to bring about the use of better management techniques to improve the lake's water quality.

A remote sensor was installed in the spillway to allow the project as well as water quality personnel to remotely monitor temperature and oxygen readings to avoid fish kills. During low flow, water is discharged through the sluice gates from the bottom of the lake. This water is low in oxygen and can create a low oxygen area below the dam. The sensor will allow the project to track oxygen levels below the dam and make appropriate adjustments to avoid a possible fish kill. Normally allowing water to spill through the tainter gates will alleviate low oxygen levels below the dam.

3.2 Sediment Summary

Sediments did not exceed the TACO, Non-TACO or QRT references. In addition, concentrations of total metals in background soils were not exceeded for Illinois. Whether ubiquitous (naturally occurring) or anthropogenic (man made) in nature, continued investigation appears warranted based on levels present and ecological risk potential, particularly in the area of the dam where contaminants may collect and be released down stream. For potential ecological risk from organic contaminants, the organophosphates (particularly atrazine and chloropyrifos) were below laboratory reporting limits.

For potential human health risk, there are no know values in Illinois for sediments. While not a direct correlation, sample results were compared against Illinois Tiered Approach to Corrective Action Objectives (TACO) lowest default target levels for all soil types and exposure pathways for soils. Arsenic, and lead exceeded TACO levels at all sites which provides additional justification for continued sediment monitoring for inorganics.

4.0 PLANNED 2008 STUDIES

The Shelbyville Lake water quality monitoring will continue in Fiscal Year 2008 on a limited basis. Because of budgetary constraints the number of sampling events will be cut drastically. Reducing the number of sampling events will limit the value of a trend analysis. Shelbyville Lake provides water supplies to many communities and is a high usage recreational

lake. The monitoring of water quality is imperative to assure the water quality is within acceptable limits for the designated usage.

The sampling sites include the following: Site 1 SBV-1 Spillway, Site 2 SBV-02 Lake side in front of Dam, Site 4 SBV-04 Kaskaskia River arm near Sullivan Marina, Site 7, SBV-7, at Cooks Mill, Site 9 SBV-9, at Hwy 32 at Lovington, and Site 11 SBV-11, Okaw River Arm near the C. & E. I. railroad bridge. This combination of sites effectively represents the incoming contaminants and their effects on the lake.

APPENDIX A

DATA

LAB DATA SEDIMENT SAMPLES

Site	Date	Time	Matrix	Result	Qualifier	Unit	Analyte Name	Reporting Limit	mdl
SBV-11	07/25/2007	12:40	S	49	U	ug/kg	Acetochlor	49	6
SBV-11	07/25/2007	12:40	S	49	U	ug/kg	Alachlor	49	8
SBV-11	07/25/2007	12:40	S	3	U	mg/kg	Arsenic, Total	3	0.3
SBV-11	07/25/2007	12:40	S	49	U	ug/kg	Atrazine	49	7
SBV-11	07/25/2007	12:40	S	36		mg/kg	Barium, Total	1	0.04
SBV-11	07/25/2007	12:40	S	14		mg/kg	Boron, Total	13	4
SBV-11	07/25/2007	12:40	S	84	U	ug/kg	Bromacil	84	20
SBV-11	07/25/2007	12:40	S	49	U	ug/kg	Butachlor	49	10
SBV-11	07/25/2007	12:40	S	0.7	U	mg/kg	Cadmium, Total	0.7	0.09
SBV-11	07/25/2007	12:40	S	49	U	ug/kg	Chlorpyrifos	49	20
SBV-11	07/25/2007	12:40	S	7.8		mg/kg	Chromium, Total	1.3	0.3
SBV-11	07/25/2007	12:40	S	5		mg/kg	Copper, Total	3	0.1
SBV-11	07/25/2007	12:40	S	49	U	ug/kg	Cyanizine	49	10
SBV-11	07/25/2007	12:40	S	6540		mg/kg	Iron, Total	13	3
SBV-11	07/25/2007	12:40	S	4		mg/kg	Lead, Total	3	0.4
SBV-11	07/25/2007	12:40	S	173		mg/kg	Manganese, Total	1.3	0.1
SBV-11	07/25/2007	12:40	S	0.07	U	mg/kg	Mercury, Total	0.07	0.02
SBV-11	07/25/2007	12:40	S	49	U	ug/kg	Metolachlor	49	8
SBV-11	07/25/2007	12:40	S	49	U	ug/kg	Metribuzin	49	10
SBV-11	07/25/2007	12:40	S	28.8		%	Moisture	0.1	0.1
SBV-11	07/25/2007	12:40	S	49	U	ug/kg	Molinate	49	6
SBV-11	07/25/2007	12:40	S	7		mg/kg	Nickel, Total	3	0.3
SBV-11	07/25/2007	12:40	S	7	U	mg/kg	Nitrate-N	7.0	0.01
SBV-11	07/25/2007	12:40	S	49	U	ug/kg	Pendimethalin(Prowl)	49	10
SBV-11	07/25/2007	12:40	S	251		mg/kg	Phosphorus, Total	14	0.01
SBV-11	07/25/2007	12:40	S	84	U	ug/kg	Prometon	84	7
SBV-11	07/25/2007	12:40	S	49	U	ug/kg	Propachlor	49	6
SBV-11	07/25/2007	12:40	S	7	U	mg/kg	Selenium, Total	7	0.7
SBV-11	07/25/2007	12:40	S	0.7	U	mg/kg	Silver, Total	0.7	0.2
SBV-11	07/25/2007	12:40	S	49	U	ug/kg	Simazine	49	7
SBV-11	07/25/2007	12:40	S	577		mg/kg	Total Kjeldahl Nitrogen	21.1	3
SBV-11	07/25/2007	12:40	S	4970		mg/kg	Total Organic Carbon	1950	100
SBV-11	07/25/2007	12:40	S	71.2		%	Total Solids	0.1	0.1

LAB DATA SEDIMENT SAMPLES

Site	Date	Time	Matrix	Result	Qualifier	Unit	Analyte Name	Reporting Limit	mdl
SBV-11	07/25/2007	12:40	S	49	U	ug/kg	Trifluralin	49	6
SBV-11	07/25/2007	12:40	S	22		mg/kg	Zinc, Total	3	0.5
SBV-2	07/25/2007	11:23	S	47	U	ug/kg	Acetochlor	47	5
SBV-2	07/25/2007	11:23	S	47	U	ug/kg	Alachlor	47	8
SBV-2	07/25/2007	11:23	S	4		mg/kg	Arsenic, Total	2	0.2
SBV-2	07/25/2007	11:23	S	47	U	ug/kg	Atrazine	47	7
SBV-2	07/25/2007	11:23	S	24		mg/kg	Barium, Total	0.9	0.02
SBV-2	07/25/2007	11:23	S	13		mg/kg	Boron, Total	9	3
SBV-2	07/25/2007	11:23	S	81	U	ug/kg	Bromacil	81	20
SBV-2	07/25/2007	11:23	S	47	U	ug/kg	Butachlor	47	10
SBV-2	07/25/2007	11:23	S	0.5	U	mg/kg	Cadmium, Total	0.5	0.06
SBV-2	07/25/2007	11:23	S	47	U	ug/kg	Chlorpyrifos	47	20
SBV-2	07/25/2007	11:23	S	9.5		mg/kg	Chromium, Total	0.9	0.2
SBV-2	07/25/2007	11:23	S	4		mg/kg	Copper, Total	2	0.09
SBV-2	07/25/2007	11:23	S	47	U	ug/kg	Cyanizine	47	10
SBV-2	07/25/2007	11:23	S	8490		mg/kg	Iron, Total	9	2
SBV-2	07/25/2007	11:23	S	10		mg/kg	Lead, Total	2	0.3
SBV-2	07/25/2007	11:23	S	303		mg/kg	Manganese, Total	0.9	0.09
SBV-2	07/25/2007	11:23	S	0.07	U	mg/kg	Mercury, Total	0.07	0.02
SBV-2	07/25/2007	11:23	S	47	U	ug/kg	Metolachlor	47	8
SBV-2	07/25/2007	11:23	S	47	U	ug/kg	Metribuzin	47	9
SBV-2	07/25/2007	11:23	S	27		%	Moisture	0.1	0.1
SBV-2	07/25/2007	11:23	S	47	U	ug/kg	Molinate	47	5
SBV-2	07/25/2007	11:23	S	6		mg/kg	Nickel, Total	2	0.2
SBV-2	07/25/2007	11:23	S	6.9	U	mg/kg	Nitrate-N	6.9	0.01
SBV-2	07/25/2007	11:23	S	47	U	ug/kg	Pendimethalin(Prowl)	47	10
SBV-2	07/25/2007	11:23	S	267		mg/kg	Phosphorus, Total	13	0.01
SBV-2	07/25/2007	11:23	S	81	U	ug/kg	Prometon	81	7
SBV-2	07/25/2007	11:23	S	47	U	ug/kg	Propachlor	47	5
SBV-2	07/25/2007	11:23	S	5	U	mg/kg	Selenium, Total	5	0.5
SBV-2	07/25/2007	11:23	S	0.5	U	mg/kg	Silver, Total	0.5	0.1
SBV-2	07/25/2007	11:23	S	47	U	ug/kg	Simazine	47	7

LAB DATA SEDIMENT SAMPLES

Site	Date	Time	Matrix	Result	Qualifier	Unit	Analyte Name	Reporting Limit	mdl
SBV-2	07/25/2007	11:23	S	2080		mg/kg	Total Organic Carbon	1650	80
SBV-2	07/25/2007	11:23	S	73		%	Total Solids	0.1	0.1
SBV-2	07/25/2007	11:23	S	47	U	ug/kg	Trifluralin	47	5
SBV-2	07/25/2007	11:23	S	16		mg/kg	Zinc, Total	2	0.4
SBV-4	07/25/2007	13:30	S	81	U	ug/kg	Acetochlor	81	9
SBV-4	07/25/2007	13:30	S	81	U	ug/kg	Alachlor	81	10
SBV-4	07/25/2007	13:30	S	6	U	mg/kg	Arsenic, Total	6	0.5
SBV-4	07/25/2007	13:30	S	81	U	ug/kg	Atrazine	81	10
SBV-4	07/25/2007	13:30	S	143		mg/kg	Barium, Total	2	0.06
SBV-4	07/25/2007	13:30	S	77		mg/kg	Boron, Total	22	7
SBV-4	07/25/2007	13:30	S	139	U	ug/kg	Bromacil	139	30
SBV-4	07/25/2007	13:30	S	81	U	ug/kg	Butachlor	81	20
SBV-4	07/25/2007	13:30	S	1.1	U	mg/kg	Cadmium, Total	1.1	0.2
SBV-4	07/25/2007	13:30	S	81	U	ug/kg	Chlorpyrifos	81	30
SBV-4	07/25/2007	13:30	S	26.7		mg/kg	Chromium, Total	2.2	0.5
SBV-4	07/25/2007	13:30	S	16		mg/kg	Copper, Total	4	0.2
SBV-4	07/25/2007	13:30	S	81	U	ug/kg	Cyanizine	81	20
SBV-4	07/25/2007	13:30	S	19900		mg/kg	Iron, Total	22	6
SBV-4	07/25/2007	13:30	S	10		mg/kg	Lead, Total	4	0.7
SBV-4	07/25/2007	13:30	S	471		mg/kg	Manganese, Total	2.2	0.2
SBV-4	07/25/2007	13:30	S	0.12	U	mg/kg	Mercury, Total	0.12	0.03
SBV-4	07/25/2007	13:30	S	81	U	ug/kg	Metolachlor	81	10
SBV-4	07/25/2007	13:30	S	81	U	ug/kg	Metribuzin	81	20
SBV-4	07/25/2007	13:30	S	58.3		%	Moisture	0.1	0.1
SBV-4	07/25/2007	13:30	S	81	U	ug/kg	Molinate	81	9
SBV-4	07/25/2007	13:30	S	18		mg/kg	Nickel, Total	4	0.5
SBV-4	07/25/2007	13:30	S	12.1	U	mg/kg	Nitrate-N	12.1	0.02
SBV-4	07/25/2007	13:30	S	81	U	ug/kg	Pendimethalin(Prowl)	81	20
SBV-4	07/25/2007	13:30	S	729		mg/kg	Phosphorus, Total	23	0.02
SBV-4	07/25/2007	13:30	S	139	U	ug/kg	Prometon	139	10
SBV-4	07/25/2007	13:30	S	81	U	ug/kg	Propachlor	81	9
SBV-4	07/25/2007	13:30	S	11	U	mg/kg	Selenium, Total	11	1

LAB DATA SEDIMENT SAMPLES

Site	Date	Time	Matrix	Result	Qualifier	Unit	Analyte Name	Reporting Limit	mdl
SBV-4	07/25/2007	13:30	S	81	U	ug/kg	Simazine	81	10
SBV-4	07/25/2007	13:30	S	2000		mg/kg	Total Kjeldahl Nitrogen	36.0	5
SBV-4	07/25/2007	13:30	S	20700		mg/kg	Total Organic Carbon	5190	300
SBV-4	07/25/2007	13:30	S	41.7		%	Total Solids	0.1	0.1
SBV-4	07/25/2007	13:30	S	81	U	ug/kg	Trifluralin	81	9
SBV-4	07/25/2007	13:30	S	67		mg/kg	Zinc, Total	4	0.9

LAB DATA WATER SAMPLES

Site	Date	Time	Matrix	Result	Qualifier	Unit	Analyte Name	Reporting Limit	mdl
SBV-1	07/25/2007	10:12	WT	1.1	U	ug/L	Acetochlor	1.1	0.3
SBV-2	07/25/2007	11:23	WT	1	U	ug/L	Acetochlor	1.0	0.3
SBV-9	07/25/2007	12:21	WT	1	U	ug/L	Acetochlor	1.0	0.3
SBV-11	07/25/2007	12:40	WT	1	U	ug/L	Acetochlor	1.0	0.3
SBV-15	07/25/2007	12:44	WT	1	U	ug/L	Acetochlor	1.0	0.3
SBV-4	07/25/2007	13:30	WT	1	U	ug/L	Acetochlor	1.0	0.3
SBV-1	07/25/2007	10:12	WT	1.1	U	ug/L	Alachlor	1.1	0.2
SBV-2	07/25/2007	11:23	WT	1	U	ug/L	Alachlor	1.0	0.2
SBV-9	07/25/2007	12:21	WT	1	U	ug/L	Alachlor	1.0	0.2
SBV-11	07/25/2007	12:40	WT	1	U	ug/L	Alachlor	1.0	0.2
SBV-15	07/25/2007	12:44	WT	1	U	ug/L	Alachlor	1.0	0.2
SBV-4	07/25/2007	13:30	WT	1	U	ug/L	Alachlor	1.0	0.2
SBV-1	07/25/2007	10:12	WT	0.73		mg/L	Ammonia-nitrogen, Total	0.15	0.08
SBV-2-10	07/25/2007	11:20	WT	0.23		mg/L	Ammonia-nitrogen, Total	0.10	0.05
SBV-2	07/25/2007	11:23	WT	0.1	U	mg/L	Ammonia-nitrogen, Total	0.10	0.05
SBV-7	07/25/2007	11:30	WT	0.1	U	mg/L	Ammonia-nitrogen, Total	0.10	0.05
SBV-9	07/25/2007	12:21	WT	0.1	U	mg/L	Ammonia-nitrogen, Total	0.10	0.05
SBV-11	07/25/2007	12:40	WT	0.33		mg/L	Ammonia-nitrogen, Total	0.10	0.05
SBV-15	07/25/2007	12:44	WT	0.12		mg/L	Ammonia-nitrogen, Total	0.10	0.05

Site	Date	Time	Matrix	Result	Qualifier	Unit	Analyte Name	Reporting Limit	mdl
SBV-1	07/25/2007	10:12	WT	1.1	U	ug/L	Atrazine	1.1	0.2
SBV-2	07/25/2007	11:23	WT	1	U	ug/L	Atrazine	1.0	0.2
SBV-9	07/25/2007	12:21	WT	1	U	ug/L	Atrazine	1.0	0.2
SBV-11	07/25/2007	12:40	WT	1	U	ug/L	Atrazine	1.0	0.2
SBV-15	07/25/2007	12:44	WT	1	U	ug/L	Atrazine	1.0	0.2
SBV-4	07/25/2007	13:30	WT	1	U	ug/L	Atrazine	1.0	0.2
SBV-1	07/25/2007	10:12	WT	2.1	U	ug/L	Bromacil	2.1	0.3
SBV-2	07/25/2007	11:23	WT	2.1	U	ug/L	Bromacil	2.1	0.3
SBV-9	07/25/2007	12:21	WT	2.1	U	ug/L	Bromacil	2.1	0.3
SBV-11	07/25/2007	12:40	WT	2.1	U	ug/L	Bromacil	2.1	0.3
SBV-15	07/25/2007	12:44	WT	2.1	U	ug/L	Bromacil	2.1	0.3
SBV-4	07/25/2007	13:30	WT	2	U	ug/L	Bromacil	2.0	0.3
SBV-1	07/25/2007	10:12	WT	1.1	U	ug/L	Butachlor	1.1	0.3
SBV-2	07/25/2007	11:23	WT	1	U	ug/L	Butachlor	1.0	0.3
SBV-9	07/25/2007	12:21	WT	1	U	ug/L	Butachlor	1.0	0.3
SBV-11	07/25/2007	12:40	WT	1	U	ug/L	Butachlor	1.0	0.3
SBV-15	07/25/2007	12:44	WT	1	U	ug/L	Butachlor	1.0	0.3
SBV-4	07/25/2007	13:30	WT	1	U	ug/L	Butachlor	1.0	0.3
SBV-2	07/25/2007	11:23	WT	2.18		mg/m3	Chlorophyll a		
SBV-11	07/25/2007	12:40	WT	7.44		mg/m3	Chlorophyll a		
SBV-4	07/25/2007	13:30	WT	6.45		mg/m3	Chlorophyll a		
SBV-1	07/25/2007	10:12	WT	1.1	U	ug/L	Chlorpyrifos	1.1	0.2
SBV-2	07/25/2007	11:23	WT	1	U	ug/L	Chlorpyrifos	1.0	0.2
SBV-9	07/25/2007	12:21	WT	1	U	ug/L	Chlorpyrifos	1.0	0.2
SBV-11	07/25/2007	12:40	WT	1	U	ug/L	Chlorpyrifos	1.0	0.2
SBV-15	07/25/2007	12:44	WT	1	U	ug/L	Chlorpyrifos	1.0	0.2
SBV-4	07/25/2007	13:30	WT	1	U	ug/L	Chlorpyrifos	1.0	0.2
SBV-1	07/25/2007	10:12	WT	1.1	U	ug/L	Cyanizine	1.1	0.2
SBV-2	07/25/2007	11:23	WT	1	U	ug/L	Cyanizine	1.0	0.2
SBV-9	07/25/2007	12:21	WT	1	U	ug/L	Cyanizine	1.0	0.2

Site	Date	Time	Matrix	Result	Qualifier	Unit	Analyte Name	Reporting Limit	mdl
SBV-15	07/25/2007	12:44	WT	1	U	ug/L	Cyanizine	1.0	0.2
SBV-4	07/25/2007	13:30	WT	1	U	ug/L	Cyanizine	1.0	0.2
SBV-1	07/25/2007	10:12	WT	0.21		mg/L	Iron, Total	0.03	0.007
SBV-2-10	07/25/2007	11:20	WT	3.67		mg/L	Iron, Total	0.03	0.007
SBV-1	07/25/2007	10:12	WT	0.361		mg/L	Manganese, Total	0.002	0.0001
SBV-2-10	07/25/2007	11:20	WT	0.25		mg/L	Manganese, Total	0.002	0.0001
SBV-1	07/25/2007	10:12	WT	1.1	U	ug/L	Metolachlor	1.1	0.2
SBV-2	07/25/2007	11:23	WT	1	U	ug/L	Metolachlor	1.0	0.2
SBV-9	07/25/2007	12:21	WT	1	U	ug/L	Metolachlor	1.0	0.2
SBV-11	07/25/2007	12:40	WT	1	U	ug/L	Metolachlor	1.0	0.2
SBV-15	07/25/2007	12:44	WT	1	U	ug/L	Metolachlor	1.0	0.2
SBV-4	07/25/2007	13:30	WT	1	U	ug/L	Metolachlor	1.0	0.2
SBV-1	07/25/2007	10:12	WT	1.1	U	ug/L	Metribuzin	1.1	0.2
SBV-2	07/25/2007	11:23	WT	1	U	ug/L	Metribuzin	1.0	0.2
SBV-9	07/25/2007	12:21	WT	1	U	ug/L	Metribuzin	1.0	0.2
SBV-11	07/25/2007	12:40	WT	1	U	ug/L	Metribuzin	1.0	0.2
SBV-15	07/25/2007	12:44	WT	1	U	ug/L	Metribuzin	1.0	0.2
SBV-4	07/25/2007	13:30	WT	1	U	ug/L	Metribuzin	1.0	0.2
SBV-1	07/25/2007	10:12	WT	1.1	U	ug/L	Molinate	1.1	0.2
SBV-2	07/25/2007	11:23	WT	1	U	ug/L	Molinate	1.0	0.2
SBV-9	07/25/2007	12:21	WT	1	U	ug/L	Molinate	1.0	0.2
SBV-11	07/25/2007	12:40	WT	1	U	ug/L	Molinate	1.0	0.2
SBV-15	07/25/2007	12:44	WT	1	U	ug/L	Molinate	1.0	0.2
SBV-4	07/25/2007	13:30	WT	1	U	ug/L	Molinate	1.0	0.2
SBV-1	07/25/2007	10:12	WT	2.04		mg/L	Nitrate-N	0.10	0.03
SBV-2-10	07/25/2007	11:20	WT	2.1		mg/L	Nitrate-N	0.20	0.04
SBV-2	07/25/2007	11:23	WT	2.54		mg/L	Nitrate-N	0.20	0.04
SBV-7	07/25/2007	11:30	WT	1.08		mg/L	Nitrate-N	0.20	0.04
SBV-9	07/25/2007	12:21	WT	1.84		mg/L	Nitrate-N	0.20	0.04
SBV-11	07/25/2007	12:40	WT	0.22		mg/L	Nitrate-N	0.20	0.04

Site	Date	Time	Matrix	Result	Qualifier	Unit	Analyte Name	Reporting Limit	mdl
SBV-4	07/25/2007	13:30	WT	0.2	U	mg/L	Nitrate-N	0.20	0.04
SBV-1	07/25/2007	10:12	WT	0.02	U	mg/L	Orthophosphate	0.02	0.007
SBV-2-10	07/25/2007	11:20	WT	0.02	U	mg/L	Orthophosphate	0.02	0.007
SBV-2	07/25/2007	11:23	WT	0.02	U	mg/L	Orthophosphate	0.02	0.007
SBV-7	07/25/2007	11:30	WT	0.18		mg/L	Orthophosphate	0.02	0.007
SBV-9	07/25/2007	12:21	WT	0.08		mg/L	Orthophosphate	0.02	0.007
SBV-11	07/25/2007	12:40	WT	0.02	U	mg/L	Orthophosphate	0.02	0.007
SBV-15	07/25/2007	12:44	WT	0.02	U	mg/L	Orthophosphate	0.02	0.007
SBV-4	07/25/2007	13:30	WT	0.02	U	mg/L	Orthophosphate	0.02	0.007
SBV-1	07/25/2007	10:12	WT	1.1	U	ug/L	Pendimethalin(Prowl)	1.1	0.2
SBV-2	07/25/2007	11:23	WT	1	U	ug/L	Pendimethalin(Prowl)	1.0	0.2
SBV-9	07/25/2007	12:21	WT	1	U	ug/L	Pendimethalin(Prowl)	1.0	0.2
SBV-11	07/25/2007	12:40	WT	1	U	ug/L	Pendimethalin(Prowl)	1.0	0.2
SBV-15	07/25/2007	12:44	WT	1	U	ug/L	Pendimethalin(Prowl)	1.0	0.2
SBV-4	07/25/2007	13:30	WT	1	U	ug/L	Pendimethalin(Prowl)	1.0	0.2
SBV-2	07/25/2007		WT	9.66		mg/m3	Pheophytin		
SBV-4	07/25/2007		WT	30.49		mg/m3	Pheophytin		
SBV-2	07/25/2007	11:23	WT			mg/m3	Pheophytin		
SBV-11	07/25/2007	12:40	WT			mg/m3	Pheophytin		
SBV-11	07/25/2007	12:40	WT	29.71		mg/m3	Pheophytin		
SBV-4	07/25/2007	13:30	WT			mg/m3	Pheophytin		
SBV-1	07/25/2007	10:12	WT	0.1	U	mg/L	Phosphorus, Total	0.10	0.01
SBV-2-10	07/25/2007	11:20	WT	0.1	U	mg/L	Phosphorus, Total	0.10	0.01
SBV-2	07/25/2007	11:23	WT	0.1	U	mg/L	Phosphorus, Total	0.10	0.01
SBV-7	07/25/2007	11:30	WT	0.13		mg/L	Phosphorus, Total	0.10	0.01
SBV-9	07/25/2007	12:21	WT	0.1	U	mg/L	Phosphorus, Total	0.10	0.01
SBV-11	07/25/2007	12:40	WT	0.1	U	mg/L	Phosphorus, Total	0.10	0.01
SBV-15	07/25/2007	12:44	WT	0.1	U	mg/L	Phosphorus, Total	0.10	0.01
SBV-4	07/25/2007	13:30	WT	0.15		mg/L	Phosphorus, Total	0.10	0.01
SBV-1	07/25/2007	10:12	WT	1.1	U	ug/L	Prometon	1.1	0.2
SBV-2	07/25/2007	11:23	WT	1	U	ug/L	Prometon	1.0	0.2

Site	Date	Time	Matrix	Result	Qualifier	Unit	Analyte Name	Reporting Limit	mdl
SBV-11	07/25/2007	12:40	WT	1	U	ug/L	Prometon	1.0	0.2
SBV-15	07/25/2007	12:44	WT	1	U	ug/L	Prometon	1.0	0.2
SBV-4	07/25/2007	13:30	WT	1	U	ug/L	Prometon	1.0	0.2
SBV-1	07/25/2007	10:12	WT	1.1	U	ug/L	Propachlor	1.1	0.2
SBV-2	07/25/2007	11:23	WT	1	U	ug/L	Propachlor	1.0	0.2
SBV-9	07/25/2007	12:21	WT	1	U	ug/L	Propachlor	1.0	0.2
SBV-11	07/25/2007	12:40	WT	1	U	ug/L	Propachlor	1.0	0.2
SBV-15	07/25/2007	12:44	WT	1	U	ug/L	Propachlor	1.0	0.2
SBV-4	07/25/2007	13:30	WT	1	U	ug/L	Propachlor	1.0	0.2
SBV-1	07/25/2007	10:12	WT	1.1	U	ug/L	Simazine	1.1	0.2
SBV-2	07/25/2007	11:23	WT	1	U	ug/L	Simazine	1.0	0.2
SBV-9	07/25/2007	12:21	WT	1	U	ug/L	Simazine	1.0	0.2
SBV-11	07/25/2007	12:40	WT	1	U	ug/L	Simazine	1.0	0.2
SBV-15	07/25/2007	12:44	WT	1	U	ug/L	Simazine	1.0	0.2
SBV-4	07/25/2007	13:30	WT	1	U	ug/L	Simazine	1.0	0.2
SBV-1	07/25/2007	10:12	WT	3.5		mg/L	Total Organic Carbon	2.0	0.4
SBV-2-10	07/25/2007	11:20	WT	3.8		mg/L	Total Organic Carbon	1.0	0.2
SBV-2	07/25/2007	11:23	WT	4.4		mg/L	Total Organic Carbon	1.0	0.2
SBV-7	07/25/2007	11:30	WT	4.7		mg/L	Total Organic Carbon	1.0	0.2
SBV-9	07/25/2007	12:21	WT	4.5		mg/L	Total Organic Carbon	1.0	0.2
SBV-11	07/25/2007	12:40	WT	5.4		mg/L	Total Organic Carbon	1.0	0.2
SBV-15	07/25/2007	12:44	WT	6		mg/L	Total Organic Carbon	1.0	0.2
SBV-4	07/25/2007	13:30	WT	6.2		mg/L	Total Organic Carbon	1.0	0.2
SBV-1	07/25/2007	10:12	WT	5	U	mg/L	Total Suspended Solids	5	5
SBV-2-10	07/25/2007	11:20	WT	5	U	mg/L	Total Suspended Solids	5	5
SBV-2	07/25/2007	11:23	WT	9		mg/L	Total Suspended Solids	5	5
SBV-7	07/25/2007	11:30	WT	5	U	mg/L	Total Suspended Solids	5	5
SBV-9	07/25/2007	12:21	WT	5	U	mg/L	Total Suspended Solids	5	5
SBV-11	07/25/2007	12:40	WT	5	U	mg/L	Total Suspended Solids	5	5
SBV-15	07/25/2007	12:44	WT	5	U	mg/L	Total Suspended Solids	5	5
SBV-4	07/25/2007	13:30	WT	5	U	mg/L	Total Suspended Solids	5	5

Site	Date	Time	Matrix	Result	Qualifier	Unit	Analyte Name	Reporting Limit	mdl
SBV-2	07/25/2007	11:23	WT	1	U	ug/L	Trifluralin	1.0	0.2
SBV-9	07/25/2007	12:21	WT	1	U	ug/L	Trifluralin	1.0	0.2
SBV-11	07/25/2007	12:40	WT	1	U	ug/L	Trifluralin	1.0	0.2
SBV-15	07/25/2007	12:44	WT	1	U	ug/L	Trifluralin	1.0	0.2
SBV-4	07/25/2007	13:30	WT	1	U	ug/L	Trifluralin	1.0	0.2
SBV-1	07/25/2007	10:12	WT	5	U	mg/L	Volatile Suspended Solids	5	
SBV-2-10	07/25/2007	11:20	WT	5	U	mg/L	Volatile Suspended Solids	5	
SBV-2	07/25/2007	11:23	WT	8		mg/L	Volatile Suspended Solids	5	
SBV-7	07/25/2007	11:30	WT	5	U	mg/L	Volatile Suspended Solids	5	
SBV-9	07/25/2007	12:21	WT	5	U	mg/L	Volatile Suspended Solids	5	
SBV-11	07/25/2007	12:40	WT	5	U	mg/L	Volatile Suspended Solids	5	
SBV-15	07/25/2007	12:44	WT	5	U	mg/L	Volatile Suspended Solids	5	
SBV-4	07/25/2007	13:30	WT	5	U	mg/L	Volatile Suspended Solids	5	
SBV-1	08/16/2007	09:30	WT	1	U	ug/L	Acetochlor	1.0	0.3
SBV-2	08/16/2007	10:24	WT	1	U	ug/L	Acetochlor	1.0	0.3
SBV-7	08/16/2007	10:35	WT	1	U	ug/L	Acetochlor	1.0	0.3
SBV-9	08/16/2007	11:00	WT	1.1	U	ug/L	Acetochlor	1.1	0.3
SBV-11	08/16/2007	11:23	WT	1.1	U	ug/L	Acetochlor	1.1	0.3
SBV-15	08/16/2007	11:25	WT	1.1	U	ug/L	Acetochlor	1.1	0.3
SBV-4	08/16/2007	12:08	WT	1.1	U	ug/L	Acetochlor	1.1	0.3
SBV-1	08/16/2007	09:30	WT	1	U	ug/L	Alachlor	1.0	0.2
SBV-2	08/16/2007	10:24	WT	1	U	ug/L	Alachlor	1.0	0.2
SBV-7	08/16/2007	10:35	WT	1	U	ug/L	Alachlor	1.0	0.2
SBV-9	08/16/2007	11:00	WT	1.1	U	ug/L	Alachlor	1.1	0.2
SBV-11	08/16/2007	11:23	WT	1.1	U	ug/L	Alachlor	1.1	0.2
SBV-15	08/16/2007	11:25	WT	1.1	U	ug/L	Alachlor	1.1	0.2
SBV-4	08/16/2007	12:08	WT	1.1	U	ug/L	Alachlor	1.1	0.2
SBV-1	08/16/2007	09:30	WT	1		mg/L	Ammonia-nitrogen, Total	0.10	0.03
SBV-2	08/16/2007	10:24	WT	0.12		mg/L	Ammonia-nitrogen, Total	0.10	0.03
SBV-2-10	08/16/2007	10:26	WT	0.71		mg/L	Ammonia-nitrogen, Total	0.10	0.03
SBV-7	08/16/2007	10:35	WT	0.1		mg/L	Ammonia-nitrogen, Total	0.10	0.03
SBV-9	08/16/2007	11:00	WT	0.12		mg/L	Ammonia-nitrogen, Total	0.10	0.03

Site	Date	Time	Matrix	Result	Qualifier	Unit	Analyte Name	Reporting Limit	mdl
SBV-15	08/16/2007	11:25	WT	0.1	U	mg/L	Ammonia-nitrogen, Total	0.10	0.03
SBV-4	08/16/2007	12:08	WT	0.21		mg/L	Ammonia-nitrogen, Total	0.10	0.03
SBV-1	08/16/2007	09:30	WT	1	U	ug/L	Atrazine	1.0	0.2
SBV-2	08/16/2007	10:24	WT	1	U	ug/L	Atrazine	1.0	0.2
SBV-7	08/16/2007	10:35	WT	1	U	ug/L	Atrazine	1.0	0.2
SBV-9	08/16/2007	11:00	WT	1.1	U	ug/L	Atrazine	1.1	0.2
SBV-11	08/16/2007	11:23	WT	1.1	U	ug/L	Atrazine	1.1	0.2
SBV-15	08/16/2007	11:25	WT	1.1	U	ug/L	Atrazine	1.1	0.2
SBV-4	08/16/2007	12:08	WT	1.1	U	ug/L	Atrazine	1.1	0.2
SBV-1	08/16/2007	09:30	WT	2.1	U	ug/L	Bromacil	2.1	0.3
SBV-2	08/16/2007	10:24	WT	2	U	ug/L	Bromacil	2.0	0.3
SBV-7	08/16/2007	10:35	WT	2.1	U	ug/L	Bromacil	2.1	0.3
SBV-9	08/16/2007	11:00	WT	2.2	U	ug/L	Bromacil	2.2	0.3
SBV-11	08/16/2007	11:23	WT	2.1	U	ug/L	Bromacil	2.1	0.3
SBV-15	08/16/2007	11:25	WT	2.1	U	ug/L	Bromacil	2.1	0.3
SBV-4	08/16/2007	12:08	WT	2.2	U	ug/L	Bromacil	2.2	0.3
SBV-1	08/16/2007	09:30	WT	1	U	ug/L	Butachlor	1.0	0.3
SBV-2	08/16/2007	10:24	WT	1	U	ug/L	Butachlor	1.0	0.3
SBV-7	08/16/2007	10:35	WT	1	U	ug/L	Butachlor	1.0	0.3
SBV-9	08/16/2007	11:00	WT	1.1	U	ug/L	Butachlor	1.1	0.3
SBV-11	08/16/2007	11:23	WT	1.1	U	ug/L	Butachlor	1.1	0.3
SBV-15	08/16/2007	11:25	WT	1.1	U	ug/L	Butachlor	1.1	0.3
SBV-4	08/16/2007	12:08	WT	1.1	U	ug/L	Butachlor	1.1	0.3
SBV-2	08/16/2007	10:24	WT	0.33		mg/m3	Chlorophyll a		
SBV-11	08/16/2007	11:23	WT	5.83		mg/m3	Chlorophyll a		
SBV-15	08/16/2007	11:25	WT	6.27		mg/m3	Chlorophyll a		
SBV-4	08/16/2007	12:08	WT	3.69		mg/m3	Chlorophyll a		
SBV-1	08/16/2007	09:30	WT	1	U	ug/L	Chlorpyrifos	1.0	0.2
SBV-2	08/16/2007	10:24	WT	1	U	ug/L	Chlorpyrifos	1.0	0.2
SBV-7	08/16/2007	10:35	WT	1	U	ug/L	Chlorpyrifos	1.0	0.2
SBV-9	08/16/2007	11:00	WT	1.1	U	ug/L	Chlorpyrifos	1.1	0.2

Site	Date	Time	Matrix	Result	Qualifier	Unit	Analyte Name	Reporting Limit	mdl
SBV-15	08/16/2007	11:25	WT	1.1	U	ug/L	Chlorpyrifos	1.1	0.2
SBV-4	08/16/2007	12:08	WT	1.1	U	ug/L	Chlorpyrifos	1.1	0.2
SBV-1	08/16/2007	09:30	WT	1	U	ug/L	Cyanizine	1.0	0.2
SBV-2	08/16/2007	10:24	WT	1	U	ug/L	Cyanizine	1.0	0.2
SBV-7	08/16/2007	10:35	WT	1	U	ug/L	Cyanizine	1.0	0.2
SBV-9	08/16/2007	11:00	WT	1.1	U	ug/L	Cyanizine	1.1	0.2
SBV-11	08/16/2007	11:23	WT	1.1	U	ug/L	Cyanizine	1.1	0.2
SBV-15	08/16/2007	11:25	WT	1.1	U	ug/L	Cyanizine	1.1	0.2
SBV-4	08/16/2007	12:08	WT	1.1	U	ug/L	Cyanizine	1.1	0.2
SBV-1	08/16/2007	09:30	WT	0.19		mg/L	Iron, Total	0.03	0.007
SBV-2-10	08/16/2007	10:26	WT	0.32		mg/L	Iron, Total	0.03	0.007
SBV-1	08/16/2007	09:30	WT	0.46		mg/L	Manganese, Total	0.012	0.0005
SBV-2-10	08/16/2007	10:26	WT	0.326		mg/L	Manganese, Total	0.002	0.0001
SBV-1	08/16/2007	09:30	WT	1	U	ug/L	Metolachlor	1.0	0.2
SBV-2	08/16/2007	10:24	WT	1	U	ug/L	Metolachlor	1.0	0.2
SBV-7	08/16/2007	10:35	WT	1	U	ug/L	Metolachlor	1.0	0.2
SBV-9	08/16/2007	11:00	WT	1.1	U	ug/L	Metolachlor	1.1	0.2
SBV-11	08/16/2007	11:23	WT	1.1	U	ug/L	Metolachlor	1.1	0.2
SBV-15	08/16/2007	11:25	WT	1.1	U	ug/L	Metolachlor	1.1	0.2
SBV-4	08/16/2007	12:08	WT	1.1	U	ug/L	Metolachlor	1.1	0.2
SBV-1	08/16/2007	09:30	WT	1	U	ug/L	Metribuzin	1.0	0.2
SBV-2	08/16/2007	10:24	WT	1	U	ug/L	Metribuzin	1.0	0.2
SBV-7	08/16/2007	10:35	WT	1	U	ug/L	Metribuzin	1.0	0.2
SBV-9	08/16/2007	11:00	WT	1.1	U	ug/L	Metribuzin	1.1	0.2
SBV-11	08/16/2007	11:23	WT	1.1	U	ug/L	Metribuzin	1.1	0.2
SBV-15	08/16/2007	11:25	WT	1.1	U	ug/L	Metribuzin	1.1	0.2
SBV-4	08/16/2007	12:08	WT	1.1	U	ug/L	Metribuzin	1.1	0.2
SBV-1	08/16/2007	09:30	WT	1	U	ug/L	Molinate	1.0	0.2
SBV-2	08/16/2007	10:24	WT	1	U	ug/L	Molinate	1.0	0.2
SBV-7	08/16/2007	10:35	WT	1	U	ug/L	Molinate	1.0	0.2
SBV-9	08/16/2007	11:00	WT	1.1	U	ug/L	Molinate	1.1	0.2

Site	Date	Time	Matrix	Result	Qualifier	Unit	Analyte Name	Reporting Limit	mdl
SBV-15	08/16/2007	11:25	WT	1.1	U	ug/L	Molinate	1.1	0.2
SBV-4	08/16/2007	12:08	WT	1.1	U	ug/L	Molinate	1.1	0.2
SBV-1	08/16/2007	09:30	WT	0.94		mg/L	Nitrate-N	0.20	0.04
SBV-2	08/16/2007	10:24	WT	1.36		mg/L	Nitrate-N	0.20	0.06
SBV-2-10	08/16/2007	10:26	WT	0.98		mg/L	Nitrate-N	0.20	0.06
SBV-7	08/16/2007	10:35	WT	0.32		mg/L	Nitrate-N	0.20	0.06
SBV-9	08/16/2007	11:00	WT	0.2	U	mg/L	Nitrate-N	0.20	0.06
SBV-11	08/16/2007	11:23	WT	0.2	U	mg/L	Nitrate-N	0.20	0.06
SBV-15	08/16/2007	11:25	WT	0.2	U	mg/L	Nitrate-N	0.20	0.06
SBV-4	08/16/2007	12:08	WT	0.2	U	mg/L	Nitrate-N	0.20	0.06
SBV-1	08/16/2007	09:30	WT	0.02	U	mg/L	Orthophosphate	0.02	0.007
SBV-2	08/16/2007	10:24	WT	0.02	U	mg/L	Orthophosphate	0.02	0.007
SBV-2-10	08/16/2007	10:26	WT	0.02	U	mg/L	Orthophosphate	0.02	0.007
SBV-7	08/16/2007	10:35	WT	0.27		mg/L	Orthophosphate	0.02	0.007
SBV-9	08/16/2007	11:00	WT	0.14		mg/L	Orthophosphate	0.02	0.007
SBV-11	08/16/2007	11:23	WT	0.02		mg/L	Orthophosphate	0.02	0.007
SBV-15	08/16/2007	11:25	WT	0.04		mg/L	Orthophosphate	0.02	0.007
SBV-4	08/16/2007	12:08	WT	0.43		mg/L	Orthophosphate	0.02	0.007
SBV-1	08/16/2007	09:30	WT	1	U	ug/L	Pendimethalin(Prowl)	1.0	0.2
SBV-2	08/16/2007	10:24	WT	1	U	ug/L	Pendimethalin(Prowl)	1.0	0.2
SBV-7	08/16/2007	10:35	WT	1	U	ug/L	Pendimethalin(Prowl)	1.0	0.2
SBV-9	08/16/2007	11:00	WT	1.1	U	ug/L	Pendimethalin(Prowl)	1.1	0.2
SBV-11	08/16/2007	11:23	WT	1.1	U	ug/L	Pendimethalin(Prowl)	1.1	0.2
SBV-15	08/16/2007	11:25	WT	1.1	U	ug/L	Pendimethalin(Prowl)	1.1	0.2
SBV-4	08/16/2007	12:08	WT	1.1	U	ug/L	Pendimethalin(Prowl)	1.1	0.2
SBV-2	08/16/2007	10:24	WT	11.32		mg/m3	Pheophytin		
SBV-11	08/16/2007	11:23	WT	41.13		mg/m3	Pheophytin		
SBV-15	08/16/2007	11:25	WT	47.1		mg/m3	Pheophytin		
SBV-4	08/16/2007	12:08	WT	40.33		mg/m3	Pheophytin		
SBV-1	08/16/2007	09:30	WT	0.1	U	mg/L	Phosphorus, Total	0.10	0.01
SBV-2	08/16/2007	10:24	WT	0.1	U	mg/L	Phosphorus, Total	0.10	0.01

Site	Date	Time	Matrix	Result	Qualifier	Unit	Analyte Name	Reporting Limit	mdl
SBV-7	08/16/2007	10:35	WT	0.22		mg/L	Phosphorus, Total	0.10	0.01
SBV-9	08/16/2007	11:00	WT	0.14		mg/L	Phosphorus, Total	0.10	0.01
SBV-11	08/16/2007	11:23	WT	0.1	U	mg/L	Phosphorus, Total	0.10	0.01
SBV-15	08/16/2007	11:25	WT	0.1	U	mg/L	Phosphorus, Total	0.10	0.01
SBV-4	08/16/2007	12:08	WT	0.34		mg/L	Phosphorus, Total	0.10	0.01
SBV-1	08/16/2007	09:30	WT	1	U	ug/L	Prometon	1.0	0.2
SBV-2	08/16/2007	10:24	WT	1	U	ug/L	Prometon	1.0	0.2
SBV-7	08/16/2007	10:35	WT	1	U	ug/L	Prometon	1.0	0.2
SBV-9	08/16/2007	11:00	WT	1.1	U	ug/L	Prometon	1.1	0.2
SBV-11	08/16/2007	11:23	WT	1.1	U	ug/L	Prometon	1.1	0.2
SBV-15	08/16/2007	11:25	WT	1.1	U	ug/L	Prometon	1.1	0.2
SBV-4	08/16/2007	12:08	WT	1.1	U	ug/L	Prometon	1.1	0.2
SBV-1	08/16/2007	09:30	WT	1	U	ug/L	Propachlor	1.0	0.2
SBV-2	08/16/2007	10:24	WT	1	U	ug/L	Propachlor	1.0	0.2
SBV-7	08/16/2007	10:35	WT	1	U	ug/L	Propachlor	1.0	0.2
SBV-9	08/16/2007	11:00	WT	1.1	U	ug/L	Propachlor	1.1	0.2
SBV-11	08/16/2007	11:23	WT	1.1	U	ug/L	Propachlor	1.1	0.2
SBV-15	08/16/2007	11:25	WT	1.1	U	ug/L	Propachlor	1.1	0.2
SBV-4	08/16/2007	12:08	WT	1.1	U	ug/L	Propachlor	1.1	0.2
SBV-1	08/16/2007	09:30	WT	1	U	ug/L	Simazine	1.0	0.2
SBV-2	08/16/2007	10:24	WT	1	U	ug/L	Simazine	1.0	0.2
SBV-7	08/16/2007	10:35	WT	1	U	ug/L	Simazine	1.0	0.2
SBV-9	08/16/2007	11:00	WT	1.1	U	ug/L	Simazine	1.1	0.2
SBV-11	08/16/2007	11:23	WT	1.1	U	ug/L	Simazine	1.1	0.2
SBV-15	08/16/2007	11:25	WT	1.1	U	ug/L	Simazine	1.1	0.2
SBV-4	08/16/2007	12:08	WT	1.1	U	ug/L	Simazine	1.1	0.2
SBV-1	08/16/2007	09:30	WT	2.9		mg/L	Total Organic Carbon	2.0	0.4
SBV-2	08/16/2007	10:24	WT	3.7		mg/L	Total Organic Carbon	1.0	0.2
SBV-2-10	08/16/2007	10:26	WT	3.1		mg/L	Total Organic Carbon	1.0	0.2
SBV-7	08/16/2007	10:35	WT	6.2		mg/L	Total Organic Carbon	1.0	0.2
SBV-9	08/16/2007	11:00	WT	8.9		mg/L	Total Organic Carbon	1.0	0.2
SBV-11	08/16/2007	11:23	WT	4.3		mg/L	Total Organic Carbon	1.0	0.2

Site	Date	Time	Matrix	Result	Qualifier	Unit	Analyte Name	Reporting Limit	mdl
SBV-4	08/16/2007	12:08	WT	5.6		mg/L	Total Organic Carbon	1.0	0.2
SBV-1	08/16/2007	09:30	WT	5		mg/L	Total Suspended Solids	5	5
SBV-2	08/16/2007	10:24	WT	9		mg/L	Total Suspended Solids	5	5
SBV-2-10	08/16/2007	10:26	WT	31		mg/L	Total Suspended Solids	5	5
SBV-7	08/16/2007	10:35	WT	94		mg/L	Total Suspended Solids	5	5
SBV-9	08/16/2007	11:00	WT	251		mg/L	Total Suspended Solids	5	5
SBV-11	08/16/2007	11:23	WT	16		mg/L	Total Suspended Solids	5	5
SBV-15	08/16/2007	11:25	WT	16		mg/L	Total Suspended Solids	5	5
SBV-4	08/16/2007	12:08	WT	31		mg/L	Total Suspended Solids	5	5
SBV-1	08/16/2007	09:30	WT	1	U	ug/L	Trifluralin	1.0	0.2
SBV-2	08/16/2007	10:24	WT	1	U	ug/L	Trifluralin	1.0	0.2
SBV-7	08/16/2007	10:35	WT	1	U	ug/L	Trifluralin	1.0	0.2
SBV-9	08/16/2007	11:00	WT	1.1	U	ug/L	Trifluralin	1.1	0.2
SBV-11	08/16/2007	11:23	WT	1.1	U	ug/L	Trifluralin	1.1	0.2
SBV-15	08/16/2007	11:25	WT	1.1	U	ug/L	Trifluralin	1.1	0.2
SBV-4	08/16/2007	12:08	WT	1.1	U	ug/L	Trifluralin	1.1	0.2
SBV-1	08/16/2007	09:30	WT	5	U	mg/L	Volatile Suspended Solids	5	
SBV-2	08/16/2007	10:24	WT	6		mg/L	Volatile Suspended Solids	5	
SBV-2-10	08/16/2007	10:26	WT	11		mg/L	Volatile Suspended Solids	5	
SBV-7	08/16/2007	10:35	WT	12		mg/L	Volatile Suspended Solids	5	
SBV-9	08/16/2007	11:00	WT	32		mg/L	Volatile Suspended Solids	5	
SBV-11	08/16/2007	11:23	WT	9		mg/L	Volatile Suspended Solids	5	
SBV-15	08/16/2007	11:25	WT	11		mg/L	Volatile Suspended Solids	5	
SBV-4	08/16/2007	12:08	WT	9		mg/L	Volatile Suspended Solids	5	
SBV-1	09/05/2007	10:52	WT	1	U	ug/L	Acetochlor	1.0	0.3
SBV-2	09/05/2007	11:15	WT	1	U	ug/L	Acetochlor	1.0	0.3
SBV-7	09/05/2007	12:45	WT	1.1	U	ug/L	Acetochlor	1.1	0.3
SBV-9	09/05/2007	13:29	WT	1.1	U	ug/L	Acetochlor	1.1	0.3
SBV-4	09/05/2007	14:07	WT	1	U	ug/L	Acetochlor	1.0	0.3
SBV-11	09/05/2007	14:45	WT	1	U	ug/L	Acetochlor	1.0	0.3
SBV-15	09/05/2007	14:52	WT	1	U	ug/L	Acetochlor	1.0	0.3

Site	Date	Time	Matrix	Result	Qualifier	Unit	Analyte Name	Reporting Limit	mdl
SBV-2	09/05/2007	11:15	WT	1	U	ug/L	Alachlor	1.0	0.2
SBV-7	09/05/2007	12:45	WT	1.1	U	ug/L	Alachlor	1.1	0.2
SBV-9	09/05/2007	13:29	WT	1.1	U	ug/L	Alachlor	1.1	0.2
SBV-4	09/05/2007	14:07	WT	1	U	ug/L	Alachlor	1.0	0.2
SBV-11	09/05/2007	14:45	WT	1	U	ug/L	Alachlor	1.0	0.2
SBV-15	09/05/2007	14:52	WT	1	U	ug/L	Alachlor	1.0	0.2
SBV-1	09/05/2007	10:52	WT	1.73		mg/L	Ammonia-nitrogen, Total	0.10	0.03
SBV-2	09/05/2007	11:15	WT	0.12		mg/L	Ammonia-nitrogen, Total	0.10	0.03
SBV-2-10	09/05/2007	11:22	WT	0.33		mg/L	Ammonia-nitrogen, Total	0.10	0.03
SBV-7	09/05/2007	12:45	WT	0.12		mg/L	Ammonia-nitrogen, Total	0.10	0.03
SBV-9	09/05/2007	13:29	WT	0.1	U	mg/L	Ammonia-nitrogen, Total	0.10	0.03
SBV-4	09/05/2007	14:07	WT	0.1	U	mg/L	Ammonia-nitrogen, Total	0.10	0.03
SBV-11	09/05/2007	14:45	WT	0.1	U	mg/L	Ammonia-nitrogen, Total	0.10	0.03
SBV-15	09/05/2007	14:52	WT	0.1	U	mg/L	Ammonia-nitrogen, Total	0.10	0.03
SBV-1	09/05/2007	10:52	WT	1	U	ug/L	Atrazine	1.0	0.2
SBV-2	09/05/2007	11:15	WT	1	U	ug/L	Atrazine	1.0	0.2
SBV-7	09/05/2007	12:45	WT	1.1	U	ug/L	Atrazine	1.1	0.2
SBV-9	09/05/2007	13:29	WT	1.1	U	ug/L	Atrazine	1.1	0.2
SBV-4	09/05/2007	14:07	WT	1	U	ug/L	Atrazine	1.0	0.2
SBV-11	09/05/2007	14:45	WT	1	U	ug/L	Atrazine	1.0	0.2
SBV-15	09/05/2007	14:52	WT	1	U	ug/L	Atrazine	1.0	0.2
SBV-1	09/05/2007	10:52	WT	2.1	U	ug/L	Bromacil	2.1	0.3
SBV-2	09/05/2007	11:15	WT	2.1	U	ug/L	Bromacil	2.1	0.3
SBV-7	09/05/2007	12:45	WT	2.1	U	ug/L	Bromacil	2.1	0.3
SBV-9	09/05/2007	13:29	WT	2.1	U	ug/L	Bromacil	2.1	0.3
SBV-4	09/05/2007	14:07	WT	2	U	ug/L	Bromacil	2.0	0.3
SBV-11	09/05/2007	14:45	WT	2	U	ug/L	Bromacil	2.0	0.3
SBV-15	09/05/2007	14:52	WT	2.1	U	ug/L	Bromacil	2.1	0.3
SBV-1	09/05/2007	10:52	WT	1	U	ug/L	Butachlor	1.0	0.3
SBV-2	09/05/2007	11:15	WT	1	U	ug/L	Butachlor	1.0	0.3
SBV-7	09/05/2007	12:45	WT	1.1	U	ug/L	Butachlor	1.1	0.3
SBV-9	09/05/2007	13:29	WT	1.1	U	ug/L	Butachlor	1.1	0.3

Site	Date	Time	Matrix	Result	Qualifier	Unit	Analyte Name	Reporting Limit	mdl
SBV-11	09/05/2007	14:45	WT	1	U	ug/L	Butachlor	1.0	0.3
SBV-15	09/05/2007	14:52	WT	1	U	ug/L	Butachlor	1.0	0.3
SBV-2	09/05/2007	11:15	WT	4.98		mg/m3	Chlorophyll a		
SBV-4	09/05/2007	14:07	WT	4.91		mg/m3	Chlorophyll a		
SBV-11	09/05/2007	14:45	WT	7.86		mg/m3	Chlorophyll a		
SBV-15	09/05/2007	14:52	WT	12		mg/m3	Chlorophyll a		
SBV-1	09/05/2007	10:52	WT	1	U	ug/L	Chlorpyrifos	1.0	0.2
SBV-2	09/05/2007	11:15	WT	1	U	ug/L	Chlorpyrifos	1.0	0.2
SBV-7	09/05/2007	12:45	WT	1.1	U	ug/L	Chlorpyrifos	1.1	0.2
SBV-9	09/05/2007	13:29	WT	1.1	U	ug/L	Chlorpyrifos	1.1	0.2
SBV-4	09/05/2007	14:07	WT	1	U	ug/L	Chlorpyrifos	1.0	0.2
SBV-11	09/05/2007	14:45	WT	1	U	ug/L	Chlorpyrifos	1.0	0.2
SBV-15	09/05/2007	14:52	WT	1	U	ug/L	Chlorpyrifos	1.0	0.2
SBV-1	09/05/2007	10:52	WT	1	U	ug/L	Cyanizine	1.0	0.2
SBV-2	09/05/2007	11:15	WT	1	U	ug/L	Cyanizine	1.0	0.2
SBV-7	09/05/2007	12:45	WT	1.1	U	ug/L	Cyanizine	1.1	0.2
SBV-9	09/05/2007	13:29	WT	1.1	U	ug/L	Cyanizine	1.1	0.2
SBV-4	09/05/2007	14:07	WT	1	U	ug/L	Cyanizine	1.0	0.2
SBV-11	09/05/2007	14:45	WT	1	U	ug/L	Cyanizine	1.0	0.2
SBV-15	09/05/2007	14:52	WT	1	U	ug/L	Cyanizine	1.0	0.2
SBV-1	09/05/2007	10:52	WT	0.4		mg/L	Iron, Total	0.03	0.007
SBV-2-10	09/05/2007	11:22	WT	0.22		mg/L	Iron, Total	0.03	0.007
SBV-1	09/05/2007	10:52	WT	0.935		mg/L	Manganese, Total	0.002	0.0001
SBV-2-10	09/05/2007	11:22	WT	0.064		mg/L	Manganese, Total	0.002	0.0001
SBV-1	09/05/2007	10:52	WT	1	U	ug/L	Metolachlor	1.0	0.2
SBV-2	09/05/2007	11:15	WT	1	U	ug/L	Metolachlor	1.0	0.2
SBV-7	09/05/2007	12:45	WT	1.1	U	ug/L	Metolachlor	1.1	0.2
SBV-9	09/05/2007	13:29	WT	1.1	U	ug/L	Metolachlor	1.1	0.2
SBV-4	09/05/2007	14:07	WT	1	U	ug/L	Metolachlor	1.0	0.2
SBV-11	09/05/2007	14:45	WT	1	U	ug/L	Metolachlor	1.0	0.2
SBV-15	09/05/2007	14:52	WT	1	U	ug/L	Metolachlor	1.0	0.2

Site	Date	Time	Matrix	Result	Qualifier	Unit	Analyte Name	Reporting Limit	mdl
SBV-1	09/05/2007	10:52	WT	1	U	ug/L	Metribuzin	1.0	0.2
SBV-2	09/05/2007	11:15	WT	1	U	ug/L	Metribuzin	1.0	0.2
SBV-7	09/05/2007	12:45	WT	1.1	U	ug/L	Metribuzin	1.1	0.2
SBV-9	09/05/2007	13:29	WT	1.1	U	ug/L	Metribuzin	1.1	0.2
SBV-4	09/05/2007	14:07	WT	1	U	ug/L	Metribuzin	1.0	0.2
SBV-11	09/05/2007	14:45	WT	1	U	ug/L	Metribuzin	1.0	0.2
SBV-15	09/05/2007	14:52	WT	1	U	ug/L	Metribuzin	1.0	0.2
SBV-1	09/05/2007	10:52	WT	1	U	ug/L	Molinate	1.0	0.2
SBV-2	09/05/2007	11:15	WT	1	U	ug/L	Molinate	1.0	0.2
SBV-7	09/05/2007	12:45	WT	1.1	U	ug/L	Molinate	1.1	0.2
SBV-9	09/05/2007	13:29	WT	1.1	U	ug/L	Molinate	1.1	0.2
SBV-4	09/05/2007	14:07	WT	1	U	ug/L	Molinate	1.0	0.2
SBV-11	09/05/2007	14:45	WT	1	U	ug/L	Molinate	1.0	0.2
SBV-15	09/05/2007	14:52	WT	1	U	ug/L	Molinate	1.0	0.2
SBV-1	09/05/2007	10:52	WT	0.28		mg/L	Nitrate-N	0.20	0.06
SBV-2	09/05/2007	11:15	WT	0.66		mg/L	Nitrate-N	0.20	0.06
SBV-2-10	09/05/2007	11:22	WT	0.6		mg/L	Nitrate-N	0.20	0.06
SBV-7	09/05/2007	12:45	WT	0.48		mg/L	Nitrate-N	0.20	0.04
SBV-9	09/05/2007	13:29	WT	0.2	U	mg/L	Nitrate-N	0.20	0.06
SBV-4	09/05/2007	14:07	WT	0.2	U	mg/L	Nitrate-N	0.20	0.06
SBV-11	09/05/2007	14:45	WT	0.2	U	mg/L	Nitrate-N	0.20	0.06
SBV-15	09/05/2007	14:52	WT	0.2	U	mg/L	Nitrate-N	0.20	0.06
SBV-1	09/05/2007	10:52	WT	0.02	U	mg/L	Orthophosphate	0.02	0.007
SBV-2	09/05/2007	11:15	WT	0.02	U	mg/L	Orthophosphate	0.02	0.007
SBV-2-10	09/05/2007	11:22	WT	0.02	U	mg/L	Orthophosphate	0.02	0.007
SBV-7	09/05/2007	12:45	WT	0.18		mg/L	Orthophosphate	0.02	0.007
SBV-9	09/05/2007	13:29	WT	0.08		mg/L	Orthophosphate	0.02	0.007
SBV-4	09/05/2007	14:07	WT	0.27		mg/L	Orthophosphate	0.02	0.007
SBV-11	09/05/2007	14:45	WT	0.14		mg/L	Orthophosphate	0.02	0.007
SBV-15	09/05/2007	14:52	WT	0.14		mg/L	Orthophosphate	0.02	0.007
SBV-1	09/05/2007	10:52	WT	1	U	ug/L	Pendimethalin(Prowl)	1.0	0.2
SBV-2	09/05/2007	11:15	WT	1	U	ug/L	Pendimethalin(Prowl)	1.0	0.2

Site	Date	Time	Matrix	Result	Qualifier	Unit	Analyte Name	Reporting Limit	mdl
SBV-9	09/05/2007	13:29	WT	1.1	U	ug/L	Pendimethalin(Prowl)	1.1	0.2
SBV-4	09/05/2007	14:07	WT	1	U	ug/L	Pendimethalin(Prowl)	1.0	0.2
SBV-11	09/05/2007	14:45	WT	1	U	ug/L	Pendimethalin(Prowl)	1.0	0.2
SBV-15	09/05/2007	14:52	WT	1	U	ug/L	Pendimethalin(Prowl)	1.0	0.2
SBV-2	09/05/2007	11:15	WT	22		mg/m3	Pheophytin		
SBV-4	09/05/2007	14:07	WT	49.4		mg/m3	Pheophytin		
SBV-11	09/05/2007	14:45	WT	44.4		mg/m3	Pheophytin		
SBV-15	09/05/2007	14:52	WT	32.3		mg/m3	Pheophytin		
SBV-1	09/05/2007	10:52	WT	0.1	U	mg/L	Phosphorus, Total	0.10	0.01
SBV-2	09/05/2007	11:15	WT	0.1	U	mg/L	Phosphorus, Total	0.10	0.01
SBV-2-10	09/05/2007	11:22	WT	0.1	U	mg/L	Phosphorus, Total	0.10	0.01
SBV-7	09/05/2007	12:45	WT	0.18		mg/L	Phosphorus, Total	0.10	0.01
SBV-9	09/05/2007	13:29	WT	0.1	U	mg/L	Phosphorus, Total	0.10	0.01
SBV-4	09/05/2007	14:07	WT	0.26		mg/L	Phosphorus, Total	0.10	0.01
SBV-11	09/05/2007	14:45	WT	0.13		mg/L	Phosphorus, Total	0.10	0.01
SBV-15	09/05/2007	14:52	WT	0.12		mg/L	Phosphorus, Total	0.10	0.01
SBV-1	09/05/2007	10:52	WT	1	U	ug/L	Prometon	1.0	0.2
SBV-2	09/05/2007	11:15	WT	1	U	ug/L	Prometon	1.0	0.2
SBV-7	09/05/2007	12:45	WT	1.1	U	ug/L	Prometon	1.1	0.2
SBV-9	09/05/2007	13:29	WT	1.1	U	ug/L	Prometon	1.1	0.2
SBV-4	09/05/2007	14:07	WT	1	U	ug/L	Prometon	1.0	0.2
SBV-11	09/05/2007	14:45	WT	1	U	ug/L	Prometon	1.0	0.2
SBV-15	09/05/2007	14:52	WT	1	U	ug/L	Prometon	1.0	0.2
SBV-1	09/05/2007	10:52	WT	1	U	ug/L	Propachlor	1.0	0.2
SBV-2	09/05/2007	11:15	WT	1	U	ug/L	Propachlor	1.0	0.2
SBV-7	09/05/2007	12:45	WT	1.1	U	ug/L	Propachlor	1.1	0.2
SBV-9	09/05/2007	13:29	WT	1.1	U	ug/L	Propachlor	1.1	0.2
SBV-4	09/05/2007	14:07	WT	1	U	ug/L	Propachlor	1.0	0.2
SBV-11	09/05/2007	14:45	WT	1	U	ug/L	Propachlor	1.0	0.2
SBV-15	09/05/2007	14:52	WT	1	U	ug/L	Propachlor	1.0	0.2
SBV-1	09/05/2007	10:52	WT	1	U	ug/L	Simazine	1.0	0.2
SBV-2	09/05/2007	11:15	WT	1	U	ug/L	Simazine	1.0	0.2
SBV-7	09/05/2007	12:45	WT	1.1	U	ug/L	Simazine	1.1	0.2

Site	Date	Time	Matrix	Result	Qualifier	Unit	Analyte Name	Reporting Limit	mdl
SBV-4	09/05/2007	14:07	WT	1	U	ug/L	Simazine	1.0	0.2
SBV-11	09/05/2007	14:45	WT	1	U	ug/L	Simazine	1.0	0.2
SBV-15	09/05/2007	14:52	WT	1	U	ug/L	Simazine	1.0	0.2
SBV-1	09/05/2007	10:52	WT	3.8		mg/L	Total Organic Carbon	2.0	0.4
SBV-2	09/05/2007	11:15	WT	7		mg/L	Total Organic Carbon	1.0	0.2
SBV-2-10	09/05/2007	11:22	WT	4.5		mg/L	Total Organic Carbon	1.0	0.2
SBV-7	09/05/2007	12:45	WT	5.5		mg/L	Total Organic Carbon	1.0	0.2
SBV-9	09/05/2007	13:29	WT	8.1		mg/L	Total Organic Carbon	1.0	0.2
SBV-4	09/05/2007	14:07	WT	6.4		mg/L	Total Organic Carbon	1.0	0.2
SBV-11	09/05/2007	14:45	WT	6.2		mg/L	Total Organic Carbon	1.0	0.2
SBV-15	09/05/2007	14:52	WT	6.3		mg/L	Total Organic Carbon	1.0	0.2
SBV-1	09/05/2007	10:52	WT	13		mg/L	Total Suspended Solids	5	5
SBV-2	09/05/2007	11:15	WT	6		mg/L	Total Suspended Solids	5	5
SBV-2-10	09/05/2007	11:22	WT	10		mg/L	Total Suspended Solids	5	5
SBV-7	09/05/2007	12:45	WT	37		mg/L	Total Suspended Solids	5	5
SBV-9	09/05/2007	13:29	WT	39		mg/L	Total Suspended Solids	5	5
SBV-4	09/05/2007	14:07	WT	20		mg/L	Total Suspended Solids	5	5
SBV-11	09/05/2007	14:45	WT	83		mg/L	Total Suspended Solids	5	5
SBV-15	09/05/2007	14:52	WT	81		mg/L	Total Suspended Solids	5	5
SBV-1	09/05/2007	10:52	WT	1	U	ug/L	Trifluralin	1.0	0.2
SBV-2	09/05/2007	11:15	WT	1	U	ug/L	Trifluralin	1.0	0.2
SBV-7	09/05/2007	12:45	WT	1.1	U	ug/L	Trifluralin	1.1	0.2
SBV-9	09/05/2007	13:29	WT	1.1	U	ug/L	Trifluralin	1.1	0.2
SBV-4	09/05/2007	14:07	WT	1	U	ug/L	Trifluralin	1.0	0.2
SBV-11	09/05/2007	14:45	WT	1	U	ug/L	Trifluralin	1.0	0.2
SBV-15	09/05/2007	14:52	WT	1	U	ug/L	Trifluralin	1.0	0.2
SBV-1	09/05/2007	10:52	WT	9		mg/L	Volatile Suspended Solids	5	
SBV-2	09/05/2007	11:15	WT	5		mg/L	Volatile Suspended Solids	5	
SBV-2-10	09/05/2007	11:22	WT	6		mg/L	Volatile Suspended Solids	5	
SBV-7	09/05/2007	12:45	WT	6		mg/L	Volatile Suspended Solids	5	
SBV-9	09/05/2007	13:29	WT	13		mg/L	Volatile Suspended Solids	5	
SBV-4	09/05/2007	14:07	WT	8		mg/L	Volatile Suspended Solids	5	

Site	Date	Time	Matrix	Result	Qualifier	Unit	Analyte Name	Reporting Limit	mdl
SBV-15	09/05/2007	14:52	WT	18		mg/L	Volatile Suspended Solids	5	
SBV-Cowden	09/20/2007	09:50	WT	1	U	ug/L	Acetochlor	1.0	0.3
SBV-1	09/20/2007	11:45	WT	1	U	ug/L	Acetochlor	1.0	0.3
SBV-2	09/20/2007	11:00	WT	1	U	ug/L	Acetochlor	1.0	0.3
SBV-7	09/20/2007	13:20	WT	1	U	ug/L	Acetochlor	1.0	0.3
SBV-9	09/20/2007	14:00	WT	1.1	U	ug/L	Acetochlor	1.1	0.3
SBV-4	09/20/2007	14:30	WT	1	U	ug/L	Acetochlor	1.0	0.3
SBV-Kasky Bio Station	09/20/2007	15:00	WT	1	U	ug/L	Acetochlor	1.0	0.3
SBV-11	09/20/2007	15:45	WT	1.1	U	ug/L	Acetochlor	1.1	0.3
SBV-15	09/20/2007	15:50	WT	1	U	ug/L	Acetochlor	1.0	0.3
SBV-Cowden	09/20/2007	09:50	WT	1	U	ug/L	Alachlor	1.0	0.2
SBV-2	09/20/2007	11:00	WT	1	U	ug/L	Alachlor	1.0	0.2
SBV-1	09/20/2007	11:45	WT	1	U	ug/L	Alachlor	1.0	0.2
SBV-7	09/20/2007	13:20	WT	1	U	ug/L	Alachlor	1.0	0.2
SBV-9	09/20/2007	14:00	WT	1.1	U	ug/L	Alachlor	1.1	0.2
SBV-4	09/20/2007	14:30	WT	1	U	ug/L	Alachlor	1.0	0.2
SBV-Kasky Bio Station	09/20/2007	15:00	WT	1	U	ug/L	Alachlor	1.0	0.2
SBV-11	09/20/2007	15:45	WT	1.1	U	ug/L	Alachlor	1.1	0.2
SBV-15	09/20/2007	15:50	WT	1	U	ug/L	Alachlor	1.0	0.2
SBV-Cowden	09/20/2007	09:50	WT	0.1	U	mg/L	Ammonia-nitrogen, Total	0.10	0.03
SBV-2	09/20/2007	11:00	WT	0.1		mg/L	Ammonia-nitrogen, Total	0.10	0.03
SBV-2-10	09/20/2007	11:10	WT	0.19		mg/L	Ammonia-nitrogen, Total	0.10	0.03
SBV-1	09/20/2007	11:45	WT	1.68		mg/L	Ammonia-nitrogen, Total	0.30	0.09
SBV-7	09/20/2007	13:20	WT	0.16		mg/L	Ammonia-nitrogen, Total	0.10	0.03
SBV-9	09/20/2007	14:00	WT	0.14		mg/L	Ammonia-nitrogen, Total	0.10	0.03
SBV-4	09/20/2007	14:30	WT	0.2		mg/L	Ammonia-nitrogen, Total	0.10	0.03
SBV-Kasky Bio Station	09/20/2007	15:00	WT	0.1	U	mg/L	Ammonia-nitrogen, Total	0.10	0.03
SBV-11	09/20/2007	15:45	WT	0.1	U	mg/L	Ammonia-nitrogen, Total	0.10	0.03
SBV-15	09/20/2007	15:50	WT	0.1	U	mg/L	Ammonia-nitrogen, Total	0.10	0.03
SBV-Cowden	09/20/2007	09:50	WT	1	U	ug/L	Atrazine	1.0	0.2

Site	Date	Time	Matrix	Result	Qualifier	Unit	Analyte Name	Reporting Limit	mdl
SBV-1	09/20/2007	11:45	WT	1	U	ug/L	Atrazine	1.0	0.2
SBV-7	09/20/2007	13:20	WT	1	U	ug/L	Atrazine	1.0	0.2
SBV-9	09/20/2007	14:00	WT	1.1	U	ug/L	Atrazine	1.1	0.2
SBV-4	09/20/2007	14:30	WT	1	U	ug/L	Atrazine	1.0	0.2
SBV-Kasky Bio Station	09/20/2007	15:00	WT	1	U	ug/L	Atrazine	1.0	0.2
SBV-11	09/20/2007	15:45	WT	1.1	U	ug/L	Atrazine	1.1	0.2
SBV-15	09/20/2007	15:50	WT	1	U	ug/L	Atrazine	1.0	0.2
SBV-Cowden	09/20/2007	09:50	WT	2.1	U	ug/L	Bromacil	2.1	0.3
SBV-2	09/20/2007	11:00	WT	2.1	U	ug/L	Bromacil	2.1	0.3
SBV-1	09/20/2007	11:45	WT	2	U	ug/L	Bromacil	2.0	0.3
SBV-7	09/20/2007	13:20	WT	2.1	U	ug/L	Bromacil	2.1	0.3
SBV-9	09/20/2007	14:00	WT	2.1	U	ug/L	Bromacil	2.1	0.3
SBV-4	09/20/2007	14:30	WT	2	U	ug/L	Bromacil	2.0	0.3
SBV-Kasky Bio Station	09/20/2007	15:00	WT	2	U	ug/L	Bromacil	2.0	0.3
SBV-11	09/20/2007	15:45	WT	2.2	U	ug/L	Bromacil	2.2	0.3
SBV-15	09/20/2007	15:50	WT	2	U	ug/L	Bromacil	2.0	0.3
SBV-Cowden	09/20/2007	09:50	WT	1	U	ug/L	Butachlor	1.0	0.3
SBV-2	09/20/2007	11:00	WT	1	U	ug/L	Butachlor	1.0	0.3
SBV-1	09/20/2007	11:45	WT	1	U	ug/L	Butachlor	1.0	0.3
SBV-7	09/20/2007	13:20	WT	1	U	ug/L	Butachlor	1.0	0.3
SBV-9	09/20/2007	14:00	WT	1.1	U	ug/L	Butachlor	1.1	0.3
SBV-4	09/20/2007	14:30	WT	1	U	ug/L	Butachlor	1.0	0.3
SBV-Kasky Bio Station	09/20/2007	15:00	WT	1	U	ug/L	Butachlor	1.0	0.3
SBV-11	09/20/2007	15:45	WT	1.1	U	ug/L	Butachlor	1.1	0.3
SBV-15	09/20/2007	15:50	WT	1	U	ug/L	Butachlor	1.0	0.3
SBV-Cowden	09/20/2007	09:50	WT			mg/m3	Chlorophyll a		
SBV-2	09/20/2007	11:00	WT			mg/m3	Chlorophyll a		
SBV-4	09/20/2007	14:30	WT			mg/m3	Chlorophyll a		
SBV-Kasky Bio Station	09/20/2007	15:00	WT			mg/m3	Chlorophyll a		
SBV-11	09/20/2007	15:45	WT			mg/m3	Chlorophyll a		

Site	Date	Time	Matrix	Result	Qualifier	Unit	Analyte Name	Reporting Limit	mdl
SBV-Cowden	09/20/2007	09:50	WT	1	U	ug/L	Chlorpyrifos	1.0	0.2
SBV-2	09/20/2007	11:00	WT	1	U	ug/L	Chlorpyrifos	1.0	0.2
SBV-1	09/20/2007	11:45	WT	1	U	ug/L	Chlorpyrifos	1.0	0.2
SBV-7	09/20/2007	13:20	WT	1	U	ug/L	Chlorpyrifos	1.0	0.2
SBV-9	09/20/2007	14:00	WT	1.1	U	ug/L	Chlorpyrifos	1.1	0.2
SBV-4	09/20/2007	14:30	WT	1	U	ug/L	Chlorpyrifos	1.0	0.2
SBV-Kasky Bio Station	09/20/2007	15:00	WT	1	U	ug/L	Chlorpyrifos	1.0	0.2
SBV-11	09/20/2007	15:45	WT	1.1	U	ug/L	Chlorpyrifos	1.1	0.2
SBV-15	09/20/2007	15:50	WT	1	U	ug/L	Chlorpyrifos	1.0	0.2
SBV-Cowden	09/20/2007	09:50	WT	1	U	ug/L	Cyanizine	1.0	0.2
SBV-2	09/20/2007	11:00	WT	1	U	ug/L	Cyanizine	1.0	0.2
SBV-1	09/20/2007	11:45	WT	1	U	ug/L	Cyanizine	1.0	0.2
SBV-7	09/20/2007	13:20	WT	1	U	ug/L	Cyanizine	1.0	0.2
SBV-9	09/20/2007	14:00	WT	1.1	U	ug/L	Cyanizine	1.1	0.2
SBV-4	09/20/2007	14:30	WT	1	U	ug/L	Cyanizine	1.0	0.2
SBV-Kasky Bio Station	09/20/2007	15:00	WT	1	U	ug/L	Cyanizine	1.0	0.2
SBV-11	09/20/2007	15:45	WT	1.1	U	ug/L	Cyanizine	1.1	0.2
SBV-15	09/20/2007	15:50	WT	1	U	ug/L	Cyanizine	1.0	0.2
SBV-2-10	09/20/2007	11:10	WT	0.09		mg/L	Iron, Total	0.03	0.007
SBV-1	09/20/2007	11:45	WT	0.57		mg/L	Iron, Total	0.03	0.007
SBV-2-10	09/20/2007	11:10	WT	0.036		mg/L	Manganese, Total	0.002	0.0001
SBV-1	09/20/2007	11:45	WT	1.22		mg/L	Manganese, Total	0.002	0.0001
SBV-Cowden	09/20/2007	09:50	WT	1	U	ug/L	Metolachlor	1.0	0.2
SBV-2	09/20/2007	11:00	WT	1	U	ug/L	Metolachlor	1.0	0.2
SBV-1	09/20/2007	11:45	WT	1	U	ug/L	Metolachlor	1.0	0.2
SBV-7	09/20/2007	13:20	WT	1	U	ug/L	Metolachlor	1.0	0.2
SBV-9	09/20/2007	14:00	WT	1.1	U	ug/L	Metolachlor	1.1	0.2
SBV-4	09/20/2007	14:30	WT	1	U	ug/L	Metolachlor	1.0	0.2
SBV-Kasky Bio Station	09/20/2007	15:00	WT	1	U	ug/L	Metolachlor	1.0	0.2
SBV-11	09/20/2007	15:45	WT	1.1	U	ug/L	Metolachlor	1.1	0.2

Site	Date	Time	Matrix	Result	Qualifier	Unit	Analyte Name	Reporting Limit	mdl
SBV-Cowden	09/20/2007	09:50	WT	1	U	ug/L	Metribuzin	1.0	0.2
SBV-2	09/20/2007	11:00	WT	1	U	ug/L	Metribuzin	1.0	0.2
SBV-1	09/20/2007	11:45	WT	1	U	ug/L	Metribuzin	1.0	0.2
SBV-7	09/20/2007	13:20	WT	1	U	ug/L	Metribuzin	1.0	0.2
SBV-9	09/20/2007	14:00	WT	1.1	U	ug/L	Metribuzin	1.1	0.2
SBV-4	09/20/2007	14:30	WT	1	U	ug/L	Metribuzin	1.0	0.2
SBV-Kasky Bio Station	09/20/2007	15:00	WT	1	U	ug/L	Metribuzin	1.0	0.2
SBV-11	09/20/2007	15:45	WT	1.1	U	ug/L	Metribuzin	1.1	0.2
SBV-15	09/20/2007	15:50	WT	1	U	ug/L	Metribuzin	1.0	0.2
SBV-Cowden	09/20/2007	09:50	WT	1	U	ug/L	Molinate	1.0	0.2
SBV-2	09/20/2007	11:00	WT	1	U	ug/L	Molinate	1.0	0.2
SBV-1	09/20/2007	11:45	WT	1	U	ug/L	Molinate	1.0	0.2
SBV-7	09/20/2007	13:20	WT	1	U	ug/L	Molinate	1.0	0.2
SBV-9	09/20/2007	14:00	WT	1.1	U	ug/L	Molinate	1.1	0.2
SBV-4	09/20/2007	14:30	WT	1	U	ug/L	Molinate	1.0	0.2
SBV-Kasky Bio Station	09/20/2007	15:00	WT	1	U	ug/L	Molinate	1.0	0.2
SBV-11	09/20/2007	15:45	WT	1.1	U	ug/L	Molinate	1.1	0.2
SBV-15	09/20/2007	15:50	WT	1	U	ug/L	Molinate	1.0	0.2
SBV-Cowden	09/20/2007	09:50	WT	0.3		mg/L	Nitrate-N	0.20	0.06
SBV-2	09/20/2007	11:00	WT	0.4		mg/L	Nitrate-N	0.20	0.06
SBV-2-10	09/20/2007	11:10	WT	0.4		mg/L	Nitrate-N	0.20	0.06
SBV-1	09/20/2007	11:45	WT	0.3		mg/L	Nitrate-N	0.20	0.06
SBV-7	09/20/2007	13:20	WT	1.72		mg/L	Nitrate-N	0.20	0.06
SBV-9	09/20/2007	14:00	WT	1.08		mg/L	Nitrate-N	0.20	0.06
SBV-4	09/20/2007	14:30	WT	0.42		mg/L	Nitrate-N	0.20	0.06
SBV-Kasky Bio Station	09/20/2007	15:00	WT	1.58		mg/L	Nitrate-N	0.20	0.02
SBV-11	09/20/2007	15:45	WT	0.2	U	mg/L	Nitrate-N	0.20	0.02
SBV-15	09/20/2007	15:50	WT	0.2	U	mg/L	Nitrate-N	0.20	0.02
SBV-Cowden	09/20/2007	09:50	WT	0.08		mg/L	Orthophosphate	0.02	0.007
SBV-2	09/20/2007	11:00	WT	0.02	U	mg/L	Orthophosphate	0.02	0.007

Site	Date	Time	Matrix	Result	Qualifier	Unit	Analyte Name	Reporting Limit	mdl
SBV-1	09/20/2007	11:45	WT	0.02	U	mg/L	Orthophosphate	0.02	0.007
SBV-7	09/20/2007	13:20	WT	0.15		mg/L	Orthophosphate	0.02	0.007
SBV-9	09/20/2007	14:00	WT	0.08		mg/L	Orthophosphate	0.02	0.007
SBV-4	09/20/2007	14:30	WT	0.17		mg/L	Orthophosphate	0.02	0.007
SBV-Kasky Bio Station	09/20/2007	15:00	WT	0.11		mg/L	Orthophosphate	0.02	0.007
SBV-11	09/20/2007	15:45	WT	0.1		mg/L	Orthophosphate	0.02	0.007
SBV-15	09/20/2007	15:50	WT	0.09		mg/L	Orthophosphate	0.02	0.007
SBV-Cowden	09/20/2007	09:50	WT	1	U	ug/L	Pendimethalin(Prowl)	1.0	0.2
SBV-2	09/20/2007	11:00	WT	1	U	ug/L	Pendimethalin(Prowl)	1.0	0.2
SBV-1	09/20/2007	11:45	WT	1	U	ug/L	Pendimethalin(Prowl)	1.0	0.2
SBV-7	09/20/2007	13:20	WT	1	U	ug/L	Pendimethalin(Prowl)	1.0	0.2
SBV-9	09/20/2007	14:00	WT	1.1	U	ug/L	Pendimethalin(Prowl)	1.1	0.2
SBV-4	09/20/2007	14:30	WT	1	U	ug/L	Pendimethalin(Prowl)	1.0	0.2
SBV-Kasky Bio Station	09/20/2007	15:00	WT	1	U	ug/L	Pendimethalin(Prowl)	1.0	0.2
SBV-11	09/20/2007	15:45	WT	1.1	U	ug/L	Pendimethalin(Prowl)	1.1	0.2
SBV-15	09/20/2007	15:50	WT	1	U	ug/L	Pendimethalin(Prowl)	1.0	0.2
SBV-Cowden	09/20/2007	09:50	WT			mg/m3	Pheophytin		
SBV-2	09/20/2007	11:00	WT			mg/m3	Pheophytin		
SBV-4	09/20/2007	14:30	WT			mg/m3	Pheophytin		
SBV-Kasky Bio Station	09/20/2007	15:00	WT			mg/m3	Pheophytin		
SBV-11	09/20/2007	15:45	WT			mg/m3	Pheophytin		
SBV-15	09/20/2007	15:50	WT			mg/m3	Pheophytin		
SBV-Cowden	09/20/2007	09:50	WT	0.1	U	mg/L	Phosphorus, Total	0.10	0.01
SBV-2	09/20/2007	11:00	WT	0.1	U	mg/L	Phosphorus, Total	0.10	0.01
SBV-2-10	09/20/2007	11:10	WT	0.1	U	mg/L	Phosphorus, Total	0.10	0.01
SBV-1	09/20/2007	11:45	WT	0.1	U	mg/L	Phosphorus, Total	0.10	0.01
SBV-7	09/20/2007	13:20	WT	0.17		mg/L	Phosphorus, Total	0.10	0.01
SBV-9	09/20/2007	14:00	WT	0.1	U	mg/L	Phosphorus, Total	0.10	0.01
SBV-4	09/20/2007	14:30	WT	0.19		mg/L	Phosphorus, Total	0.10	0.01
SBV-Kasky Bio Station	09/20/2007	15:00	WT	0.14		mg/L	Phosphorus, Total	0.10	0.01

Site	Date	Time	Matrix	Result	Qualifier	Unit	Analyte Name	Reporting Limit	mdl
SBV-15	09/20/2007	15:50	WT	0.1		mg/L	Phosphorus, Total	0.10	0.01
SBV-Cowden	09/20/2007	09:50	WT	1	U	ug/L	Prometon	1.0	0.2
SBV-2	09/20/2007	11:00	WT	1	U	ug/L	Prometon	1.0	0.2
SBV-1	09/20/2007	11:45	WT	1	U	ug/L	Prometon	1.0	0.2
SBV-7	09/20/2007	13:20	WT	1	U	ug/L	Prometon	1.0	0.2
SBV-9	09/20/2007	14:00	WT	1.1	U	ug/L	Prometon	1.1	0.2
SBV-4	09/20/2007	14:30	WT	1	U	ug/L	Prometon	1.0	0.2
SBV-Kasky Bio Station	09/20/2007	15:00	WT	1	U	ug/L	Prometon	1.0	0.2
SBV-11	09/20/2007	15:45	WT	1.1	U	ug/L	Prometon	1.1	0.2
SBV-15	09/20/2007	15:50	WT	1	U	ug/L	Prometon	1.0	0.2
SBV-Cowden	09/20/2007	09:50	WT	1	U	ug/L	Propachlor	1.0	0.2
SBV-2	09/20/2007	11:00	WT	1	U	ug/L	Propachlor	1.0	0.2
SBV-1	09/20/2007	11:45	WT	1	U	ug/L	Propachlor	1.0	0.2
SBV-7	09/20/2007	13:20	WT	1	U	ug/L	Propachlor	1.0	0.2
SBV-9	09/20/2007	14:00	WT	1.1	U	ug/L	Propachlor	1.1	0.2
SBV-4	09/20/2007	14:30	WT	1	U	ug/L	Propachlor	1.0	0.2
SBV-Kasky Bio Station	09/20/2007	15:00	WT	1	U	ug/L	Propachlor	1.0	0.2
SBV-11	09/20/2007	15:45	WT	1.1	U	ug/L	Propachlor	1.1	0.2
SBV-15	09/20/2007	15:50	WT	1	U	ug/L	Propachlor	1.0	0.2
SBV-Cowden	09/20/2007	09:50	WT	1	U	ug/L	Simazine	1.0	0.2
SBV-2	09/20/2007	11:00	WT	1	U	ug/L	Simazine	1.0	0.2
SBV-1	09/20/2007	11:45	WT	1	U	ug/L	Simazine	1.0	0.2
SBV-7	09/20/2007	13:20	WT	1	U	ug/L	Simazine	1.0	0.2
SBV-9	09/20/2007	14:00	WT	1.1	U	ug/L	Simazine	1.1	0.2
SBV-4	09/20/2007	14:30	WT	1	U	ug/L	Simazine	1.0	0.2
SBV-Kasky Bio Station	09/20/2007	15:00	WT	1	U	ug/L	Simazine	1.0	0.2
SBV-11	09/20/2007	15:45	WT	1.1	U	ug/L	Simazine	1.1	0.2
SBV-15	09/20/2007	15:50	WT	1	U	ug/L	Simazine	1.0	0.2
SBV-Cowden	09/20/2007	09:50	WT	3.5		mg/L	Total Organic Carbon	1.0	0.2
SBV-2	09/20/2007	11:00	WT	3.3		mg/L	Total Organic Carbon	1.0	0.2

Site	Date	Time	Matrix	Result	Qualifier	Unit	Analyte Name	Reporting Limit	mdl
SBV-1	09/20/2007	11:45	WT	3.2		mg/L	Total Organic Carbon	2.0	0.4
SBV-7	09/20/2007	13:20	WT	5.3		mg/L	Total Organic Carbon	1.0	0.2
SBV-9	09/20/2007	14:00	WT	5.2		mg/L	Total Organic Carbon	1.0	0.2
SBV-4	09/20/2007	14:30	WT	7.6		mg/L	Total Organic Carbon	1.0	0.2
SBV-Kasky Bio Station	09/20/2007	15:00	WT	5		mg/L	Total Organic Carbon	1.0	0.2
SBV-11	09/20/2007	15:45	WT	5.9		mg/L	Total Organic Carbon	1.0	0.2
SBV-15	09/20/2007	15:50	WT	5.8		mg/L	Total Organic Carbon	1.0	0.2
SBV-Cowden	09/20/2007	09:50	WT	5	U	mg/L	Total Suspended Solids	5	5
SBV-2	09/20/2007	11:00	WT	5	U	mg/L	Total Suspended Solids	5	5
SBV-2-10	09/20/2007	11:10	WT	5	U	mg/L	Total Suspended Solids	5	5
SBV-1	09/20/2007	11:45	WT	5	U	mg/L	Total Suspended Solids	5	5
SBV-7	09/20/2007	13:20	WT	5	U	mg/L	Total Suspended Solids	5	5
SBV-9	09/20/2007	14:00	WT	5	U	mg/L	Total Suspended Solids	5	5
SBV-4	09/20/2007	14:30	WT	5	U	mg/L	Total Suspended Solids	5	5
SBV-Kasky Bio Station	09/20/2007	15:00	WT	5	U	mg/L	Total Suspended Solids	5	5
SBV-11	09/20/2007	15:45	WT	5	U	mg/L	Total Suspended Solids	5	5
SBV-15	09/20/2007	15:50	WT	5	U	mg/L	Total Suspended Solids	5	5
SBV-Cowden	09/20/2007	09:50	WT	1	U	ug/L	Trifluralin	1.0	0.2
SBV-2	09/20/2007	11:00	WT	1	U	ug/L	Trifluralin	1.0	0.2
SBV-1	09/20/2007	11:45	WT	1	U	ug/L	Trifluralin	1.0	0.2
SBV-7	09/20/2007	13:20	WT	1	U	ug/L	Trifluralin	1.0	0.2
SBV-9	09/20/2007	14:00	WT	1.1	U	ug/L	Trifluralin	1.1	0.2
SBV-4	09/20/2007	14:30	WT	1	U	ug/L	Trifluralin	1.0	0.2
SBV-Kasky Bio Station	09/20/2007	15:00	WT	1	U	ug/L	Trifluralin	1.0	0.2
SBV-11	09/20/2007	15:45	WT	1.1	U	ug/L	Trifluralin	1.1	0.2
SBV-15	09/20/2007	15:50	WT	1	U	ug/L	Trifluralin	1.0	0.2
SBV-Cowden	09/20/2007	09:50	WT	5	U	mg/L	Volatile Suspended Solids	5	
SBV-2	09/20/2007	11:00	WT	5	U	mg/L	Volatile Suspended Solids	5	
SBV-2-10	09/20/2007	11:10	WT	5	U	mg/L	Volatile Suspended Solids	5	
SBV-1	09/20/2007	11:45	WT	5	U	mg/L	Volatile Suspended Solids	5	
SBV-7	09/20/2007	13:20	WT	5	U	mg/L	Volatile Suspended Solids	5	

Site	Date	Time	Matrix	Result	Qualifier	Unit	Analyte Name	Reporting Limit	mdl
SBV-4	09/20/2007	14:30	WT	5	U	mg/L	Volatile Suspended Solids	5	
SBV-Kasky Bio Station	09/20/2007	15:00	WT	5	U	mg/L	Volatile Suspended Solids	5	
SBV-11	09/20/2007	15:45	WT	5	U	mg/L	Volatile Suspended Solids	5	
SBV-15	09/20/2007	15:50	WT	5	U	mg/L	Volatile Suspended Solids	5	

Marinas

Site	Date	Time	Matrix	Result	Unit	Analyte Name	Standard
SBV-LS-MAR	07/25/2007	12:00	WT	10	cfu/100ml	Fecal Coliform	200cfu/100ml
SBV-SUL-MAR	07/25/2007	13:40	WT	10	cfu/100ml	Fecal Coliform	200cfu/100ml
SBV-LS-MAR	08/16/2007	10:15	WT	10	cfu/100ml	Fecal Coliform	200cfu/100ml
SBV-FIN-MAR	08/16/2007	11:05	WT	10	cfu/100ml	Fecal Coliform	200cfu/100ml
SBV-SUL-MAR	08/16/2007	12:15	WT	18	cfu/100ml	Fecal Coliform	200cfu/100ml
SBV-LS-MAR	09/05/2007	11:40	WT	250	cfu/100ml	Fecal Coliform	200cfu/100ml
SBV-SUL-MAR	09/05/2007	14:10	WT	10	cfu/100ml	Fecal Coliform	200cfu/100ml
SBV-FIN-MAR	09/05/2007	14:40	WT	10	cfu/100ml	Fecal Coliform	200cfu/100ml
SBV-LS-MAR	09/20/2007	11:23	WT	10	cfu/100ml	Fecal Coliform	200cfu/100ml
SBV-LS2-MAR	09/20/2007	11:24	WT	10	cfu/100ml	Fecal Coliform	200cfu/100ml
SBV-SUL-MAR	09/20/2007	14:30	WT	10	cfu/100ml	Fecal Coliform	200cfu/100ml
SBV-FIN-MAR	09/20/2007	15:15	WT	10	cfu/100ml	Fecal Coliform	200cfu/100ml

FIELD DATA

Site	Date	Depth	H ₂ O Temp	Redox	Conductivity	pH	D.O. %	D.O. (mg/L)	Time	Secchi (in.)
Cowden	9/20/2007	0.28	23.09	246	469	8.37	97.1	8.22	950	
Kasky Bio	9/20/2007	0.4	25.03	209	559	8.33	153	12.52	1500	
SBV 1	7/16/2007	0.17	19.41	361	452	7.48	86.6	7.8	930	
SBV 1	7/25/2007	2.37	17.8	364	445	7.73	88	8.25	1012	
SBV 1	9/5/2007	0.27	20.02	257	453	7.47	79.5	7.05	1052	
SBV 1	9/20/2007	0.2	22.58	201	430	7.54	85.8	7.36	1145	
SBV 2	7/16/2007	0.05	29.45	278	352	8.84	122.5	9.19	1024	36
SBV 2	7/16/2007	1.02	29.34	278	352	8.84	121.9	9.15		
SBV 2	7/16/2007	2	29.24	281	352	8.78	116	8.74		
SBV 2	7/16/2007	3	29.18	283	353	8.75	110.5	8.32		
SBV 2	7/16/2007	4	28.84	292	359	8.53	74.6	5.99		
SBV 2	7/16/2007	5	27.99	316	375	7.83	82.2	1.7		
SBV 2	7/16/2007	6	26.02	131	386	7.62	2.5	0.19		
SBV 2	7/16/2007	7	25.17	37	396	7.48	1.8	0.14		
SBV 2	7/16/2007	8	23.18	34	414	7.38	1.5	0.13		
SBV 2	7/16/2007	9	20.5	55	437	7.29	1.4	0.12		
SBV 2	7/16/2007	10	18.64	77	446	7.21	1.3	0.11		
SBV 2	7/25/2007	0.22	29.11	231	362	8.7	160	12.17	1123	32
SBV 2	7/25/2007	1	28.47	227	361	8.74	166.9	12.78		
SBV 2	7/25/2007	2	27.91	231	363	8.66	156	12.07		
SBV 2	7/25/2007	3	26.55	239	377	8.49	112	8.76		
SBV 2	7/25/2007	4	26.2	249	383	8.23	71.8	5.67		
SBV 2	7/25/2007	5	25.95	256	386	8.02	50.1	3.97		
SBV 2	7/25/2007	6	25.52	265	390	7.75	21.7	1.71		
SBV 2	7/25/2007	7	24.74	159	403	7.6	3.2	0.26		
SBV 2	9/5/2007	0.19	26.34	241	356	8.78	112.5	9.06	1115	26
SBV 2	9/5/2007	1	26.37	241	357	8.81	120	9.63		
SBV 2	9/5/2007	2	26.28	245	360	8.7	101	8.09		
SBV 2	9/5/2007	3	26.26	245	361	8.68	92.5	7.38		
SBV 2	9/5/2007	4	26.2	251	365	8.5	68.2	5.45		

FIELD DATA

Site	Date	Depth	H ₂ O Temp	Redox	Conductivity	pH	D.O.%	D.O.(mg/L)	Time	Secchi (in.)
SBV 2	9/5/2007	5	26.18	252	367	8.46	62.1	4.96		
SBV 2	9/5/2007	6	26.02	259	371	8.27	43.7	3.49		
SBV 2	9/20/2007	0.33	24.49	227	368	8.61	118.7	9.78	1100	24
SBV 2	9/20/2007	1.3	24.18	226	367	8.62	122.7	10.03		
SBV 2	9/20/2007	2	24.09	227	368	8.61	117.9	9.76		
SBV 2	9/20/2007	3	24	227	368	8.6	115	9.55		
SBV 2	9/20/2007	4	23.49	234	370	8.41	99.4	8.22		
SBV 2	9/20/2007	5	23.1	239	372	8.29	81.5	6.75		
SBV 2	9/20/2007	6	23	241	372	8.25	76.3	6.46		
SBV 2	9/20/2007	7	22.9	238	373	8.23	73	6.21		
SBV 4	7/16/2007	0.05	29.83	235	528	8.18	70.8	5.24	1208	9
SBV 4	7/16/2007	1	29.5	239	520	8.06	48.4	3.58		
SBV 4	7/25/2007	0.24	30.56	215	424	8.83	255	19.13	1330	9
SBV 4	7/25/2007	1	26.6	261	440	8.18	125	9.86		
SBV 4	7/25/2007	2	26.5	125	446	8.04	95	7.4		
SBV 4	9/5/2007	0.25	27.84	246	495	8.6	114.4	8.98	1407	8
SBV 4	9/5/2007	1	26.77	254	545	8.2	67.8	9.74		
SBV 4	9/5/2007	2	26.13	266	567	7.98	31.5	2.48		
SBV 4	9/20/2007	0.13	25.63	188	436	8.59	120	9.74	1430	8
SBV 4	9/20/2007	1	22.91	210	445	8.17	82	6.92		
SBV 4	9/20/2007	2	22.01	227	446	7.73	37.9	3.24		
SBV 7	7/16/2007	1.73	27.58	446	721.3	8.1	59.7	4.53	1035	
SBV 7	7/25/2007	1.85	24.7	354	678	7.87	78	6.36	1130	
SBV 7	9/5/2007	0.1	25.57	273	701	7.94	80.1	6.37	1245	
SBV 7	9/20/2007	0.19	23.33	216	671	7.9	80.1	6.74	1320	
SBV 9	7/16/2007	1.71	26.98	346	586	8.12	81.9	6.41	1100	
SVB 9	7/25/2007	1.77	24.46	323	608	7.88	100	8.24	1221	
SBV 9	9/5/2007	0.21	23.05	236	606	7.99	76.6	6.5	1329	

FIELD DATA

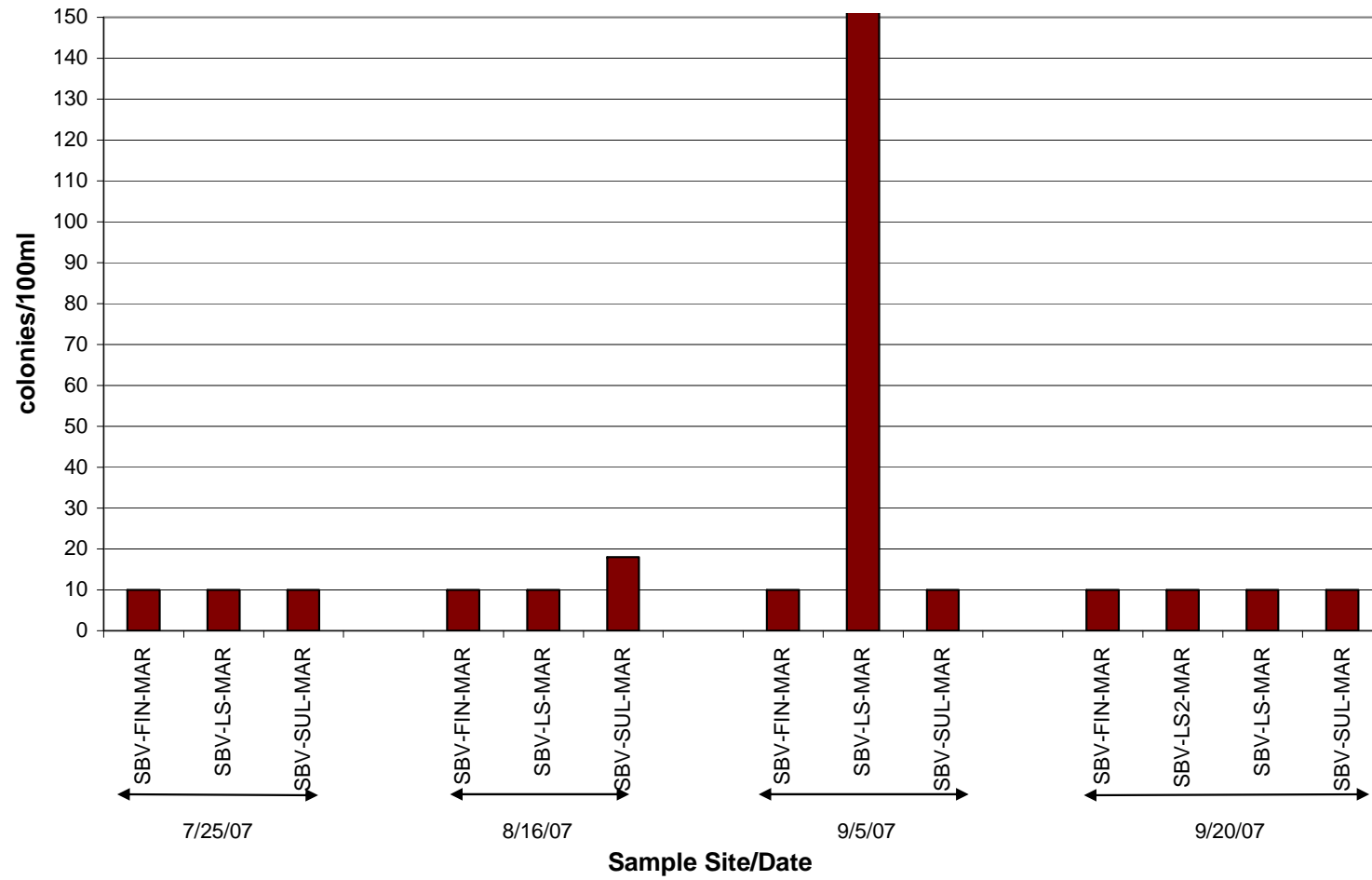
Site	Date	Depth	H ₂ O Temp	Redox	Conductivity	pH	D.O. %	D.O. (mg/L)	Time	Secchi (in.)
SBV 9	9/20/2007	0.1	22.84	219	489	7.99	99.2	8.42	1400	
SBV 11	7/16/2007	0.06	29.62	240	373	8.8	100	7.47	1123	18
SBV 11	7/16/2007	1	29.63	244	373	8.98	95.8	7.15		
SBV 11	7/16/2007	2	29.51	248	376	8.7	75.2	5.65		
SBV 11	7/16/2007	3	28.91	267	390	8.05	5.3	0.38		
SBV 11	7/16/2007	4	28.86	258	391	8.03	2.4	0.18		
SBV 11	7/16/2007	5	28.73	18	393	7.97	1.4	0.11		
SBV 11	7/16/2007	6	28.61	-70	397	7.82	1.2	0.09		
SBV 11	7/25/2007	0.34	27.53	211	370	8.64	145	10.64	1240	17
SBV 11	7/25/2007	1	26.55	235	388	8.26	67	5.31		
SBV 11	7/25/2007	2	26.16	250	399	7.93	31.8	2.5		
SBV 11	7/25/2007	3	25.98	254	403	7.85	23.3	1.86		
SBV 11	7/25/2007	4	25.91	255	406	7.81	19.1	1.52		
SBV 11	7/25/2007	5	25.85	257	408	7.76	12.7	1.02		
SBV 11	7/25/2007	6	25.83	256	409	7.74	10.6	0.85		
SBV 11	7/25/2007	7	25.72	-25	416	7.54	2.3	0.15		
SBV 11*	9/5/2007	0.06	28.26	238	411	8.82	130	10.1	1445	
SBV 11*	9/20/2007	0.13	27.96	178	374	9.14	211	16.4	1545	

* Had to take sample from shore, did not have boat

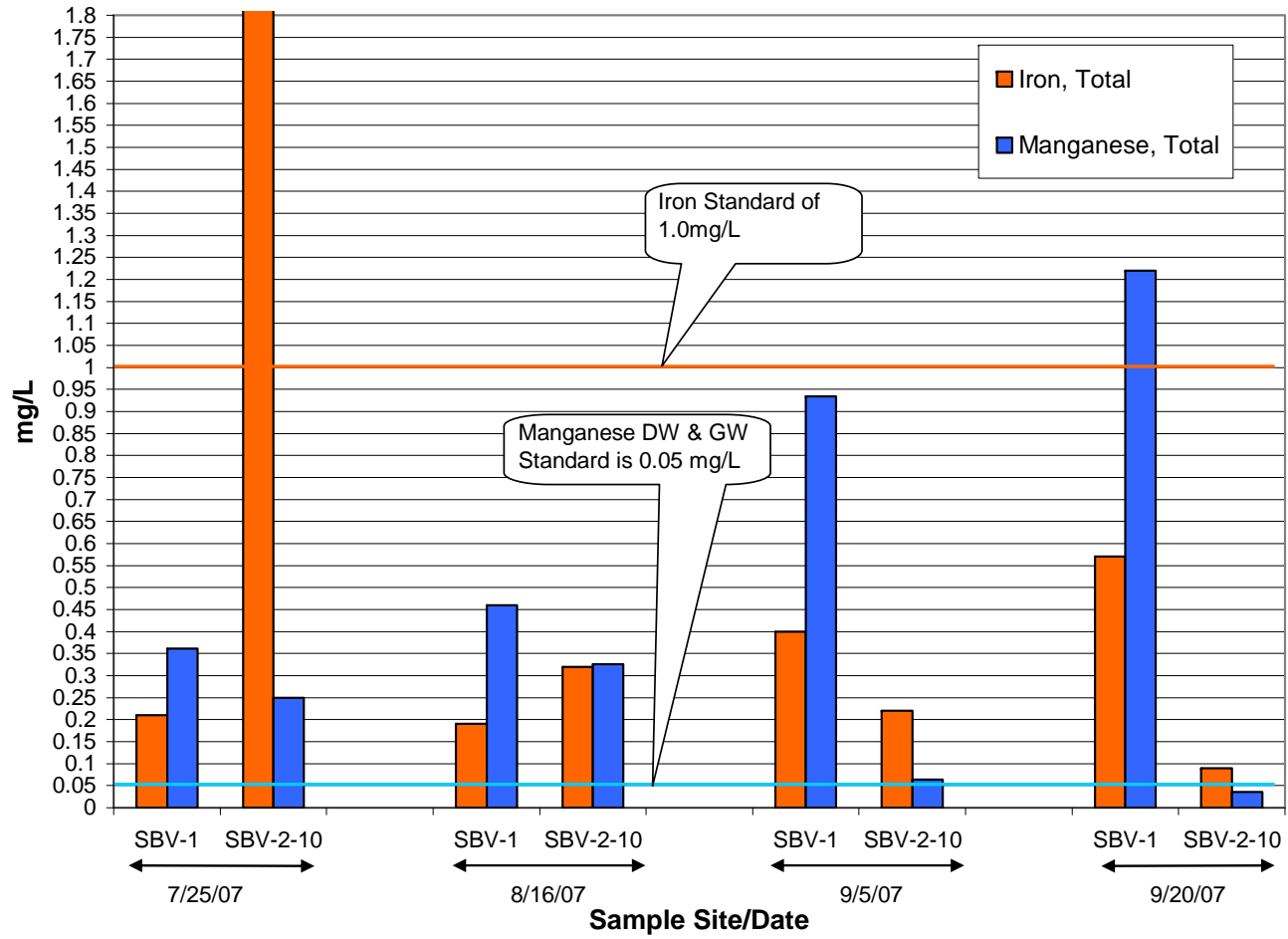
APPENDIX B

LAB DATA GRAPHS

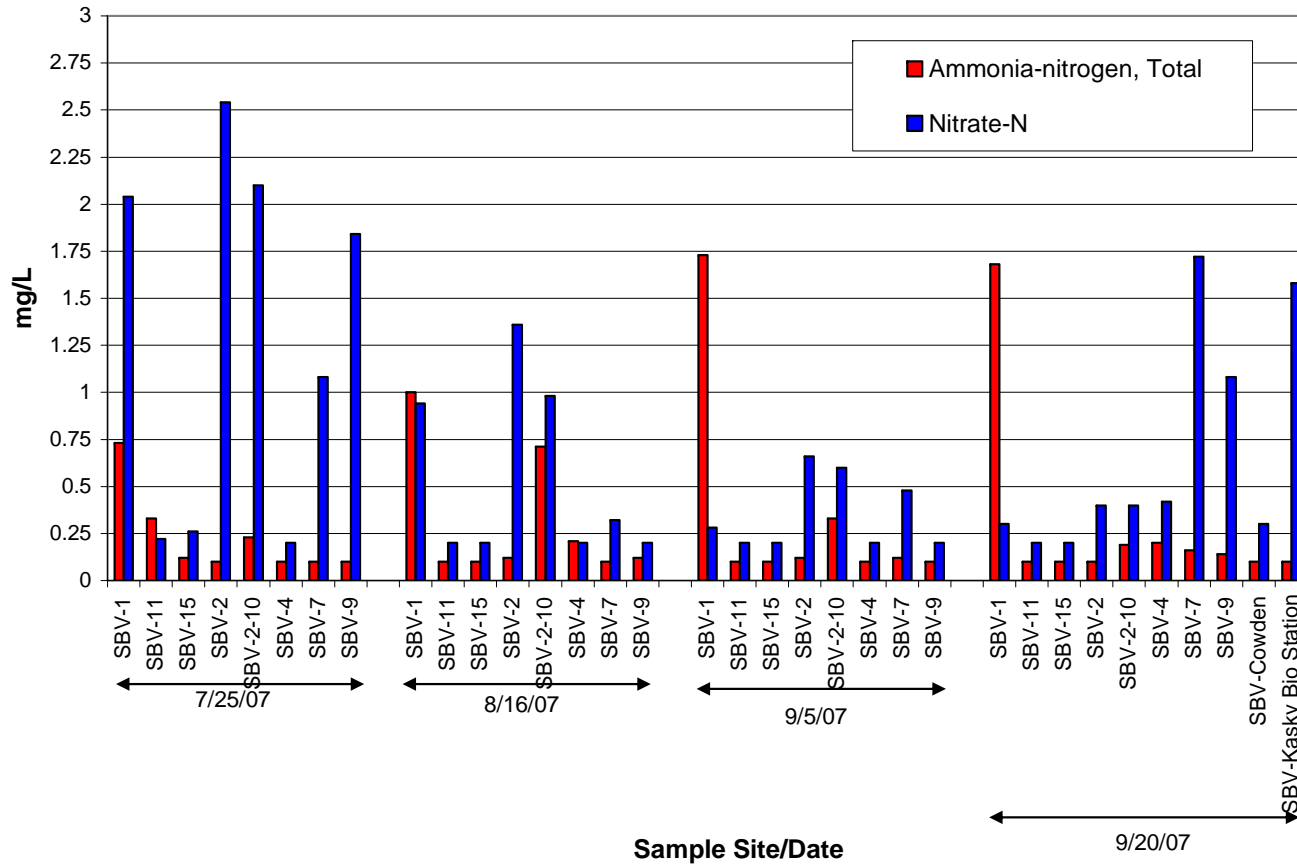
Fecal Coliform



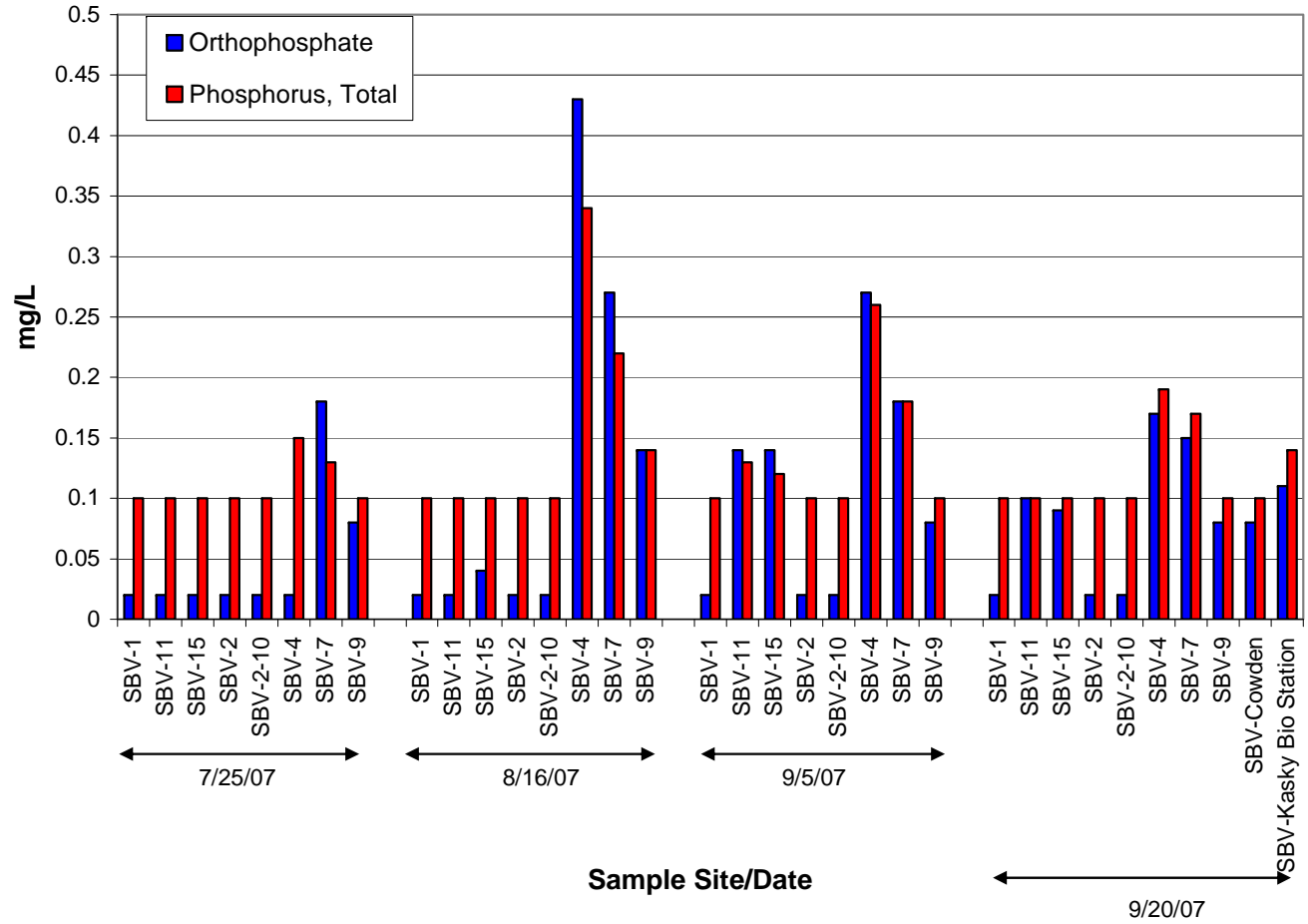
Metals



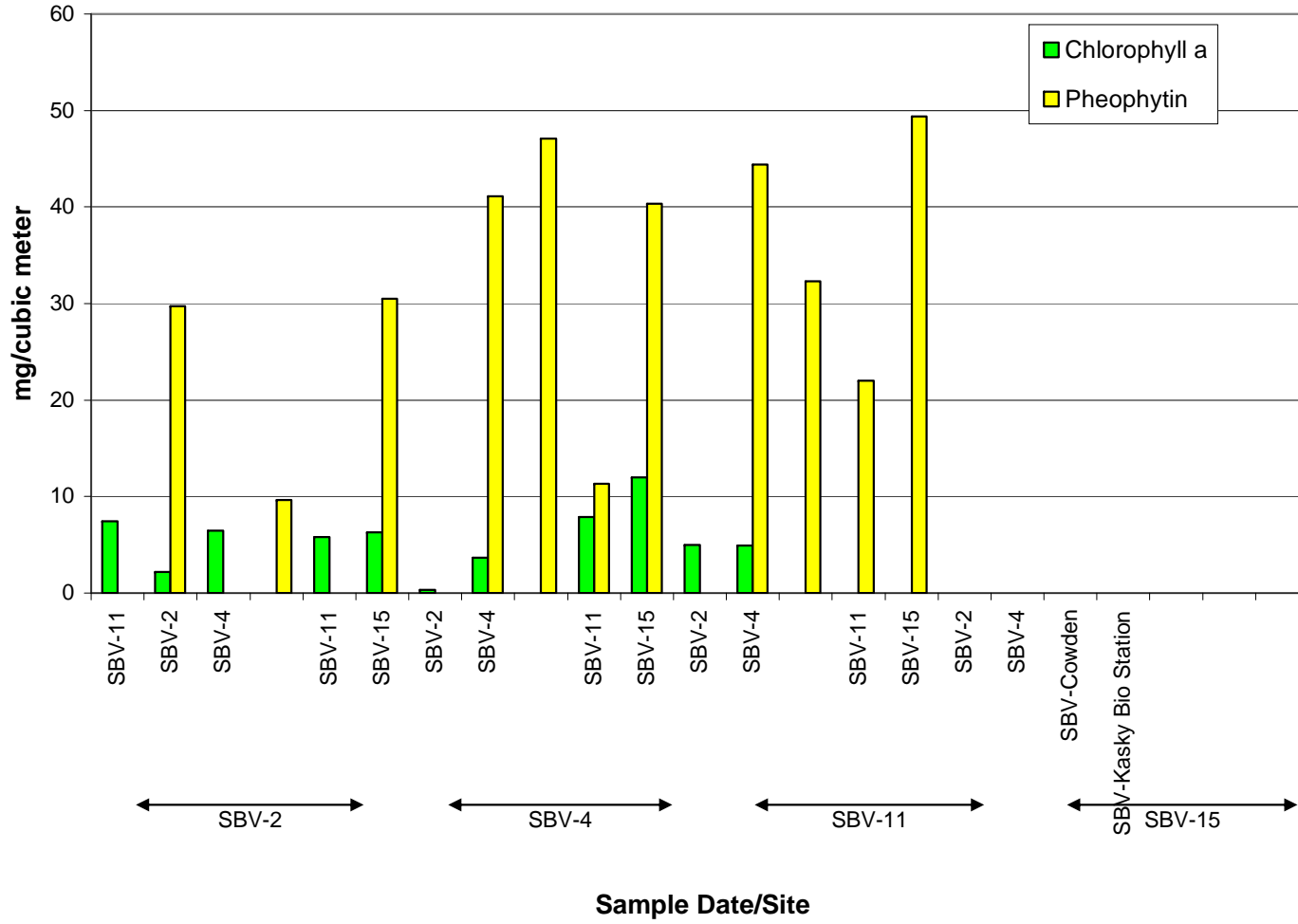
Nitrogen



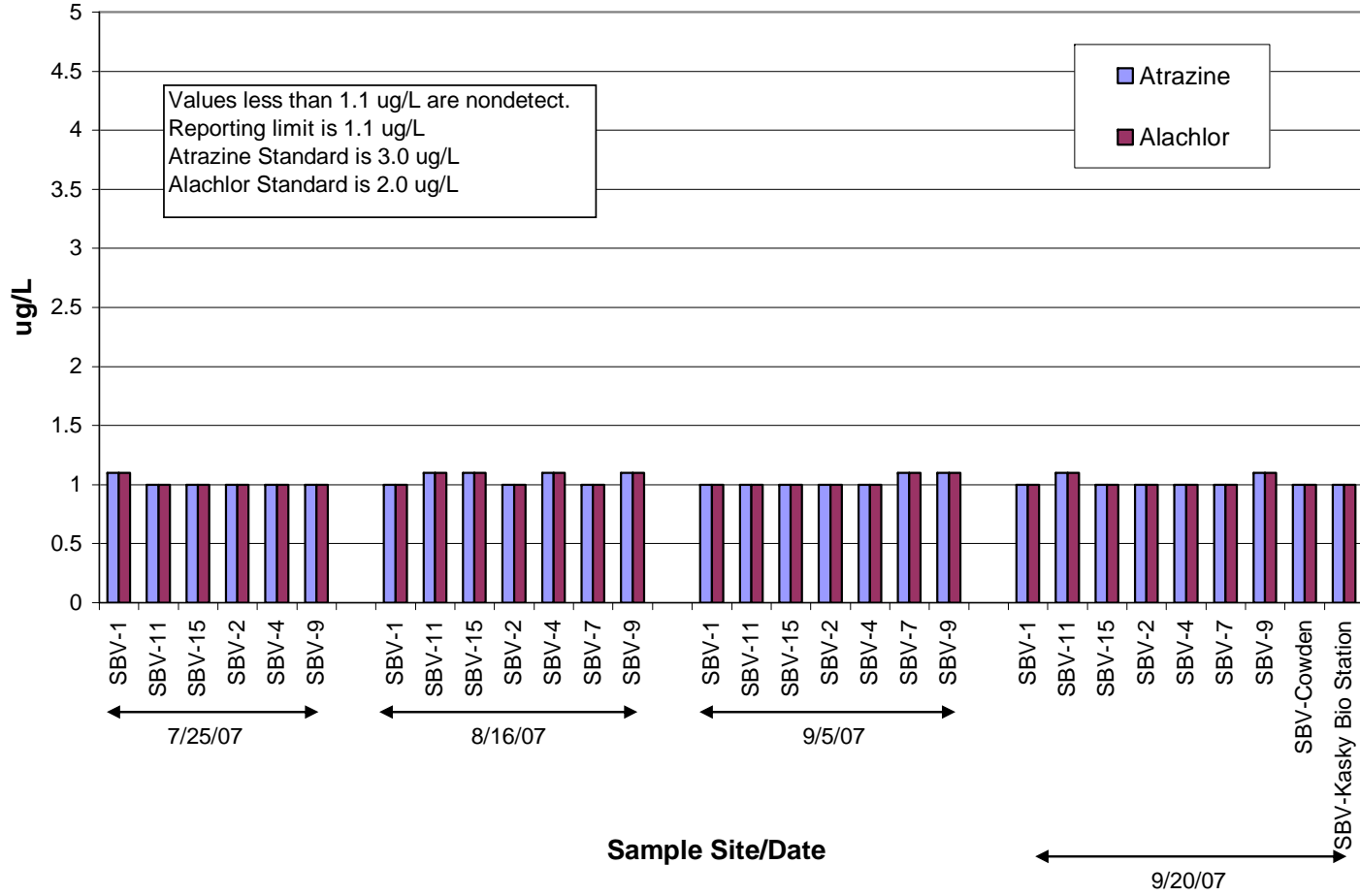
Phosphorous



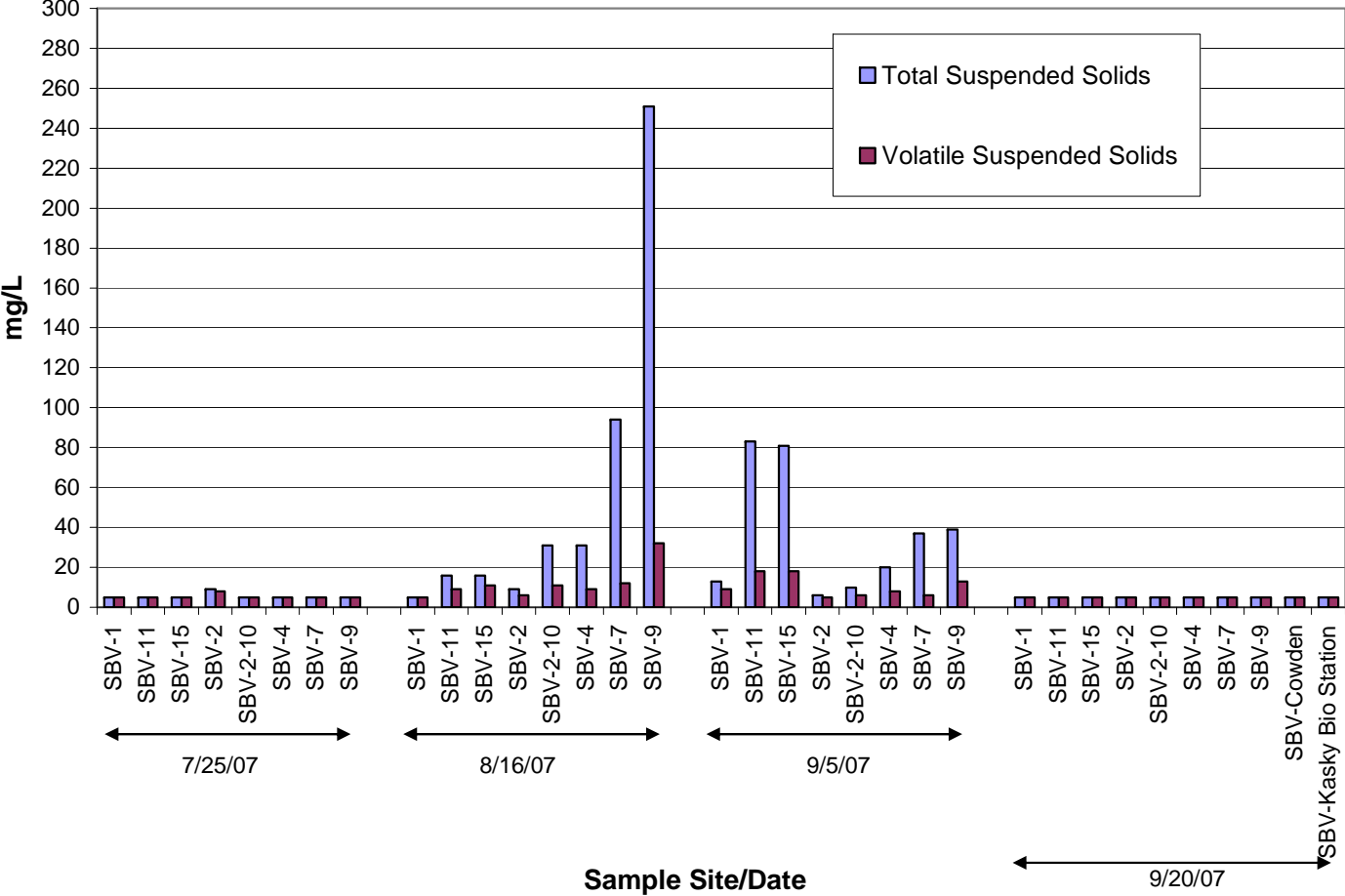
Chlorophyll & Pheophytin



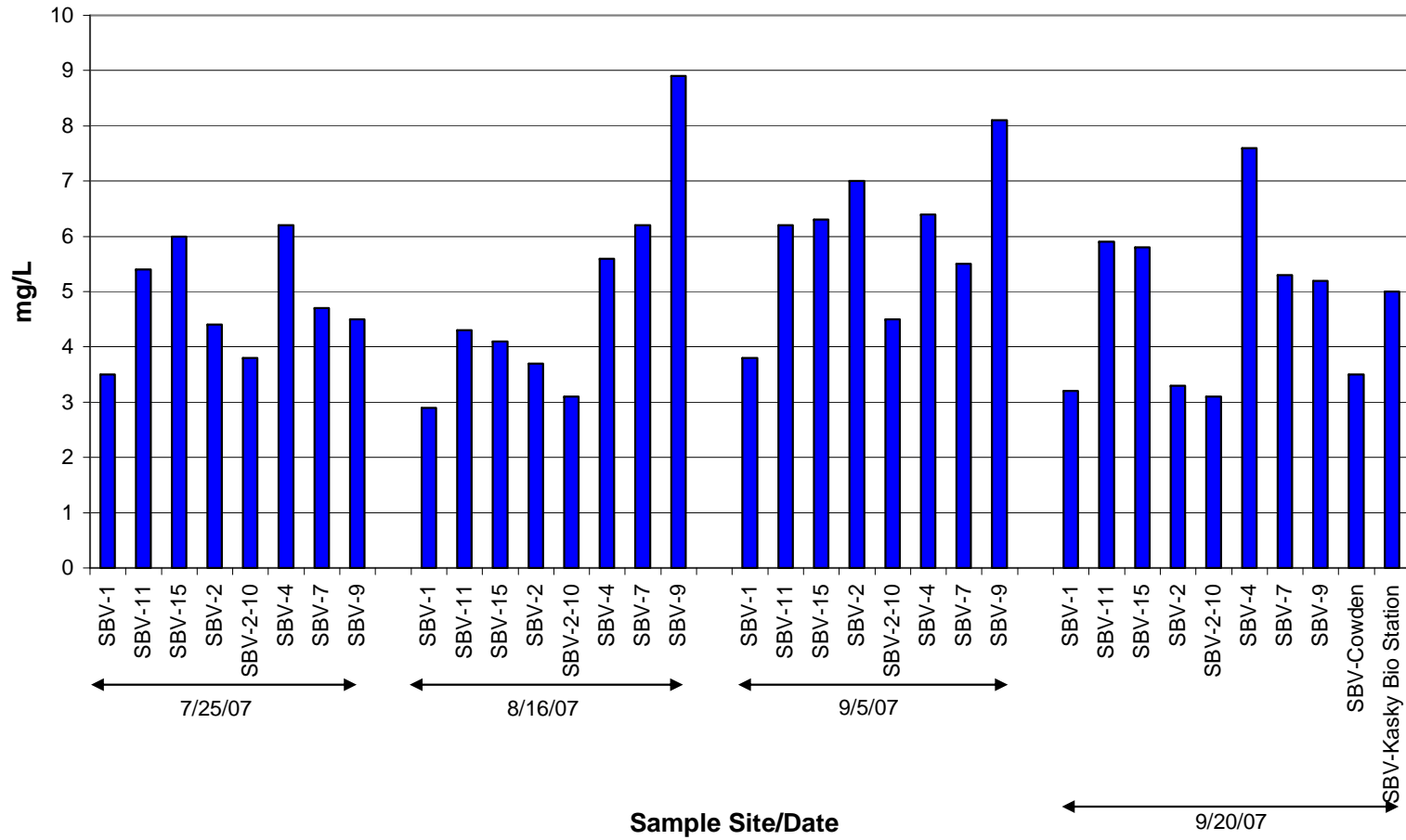
Pesticides



Suspended Solids



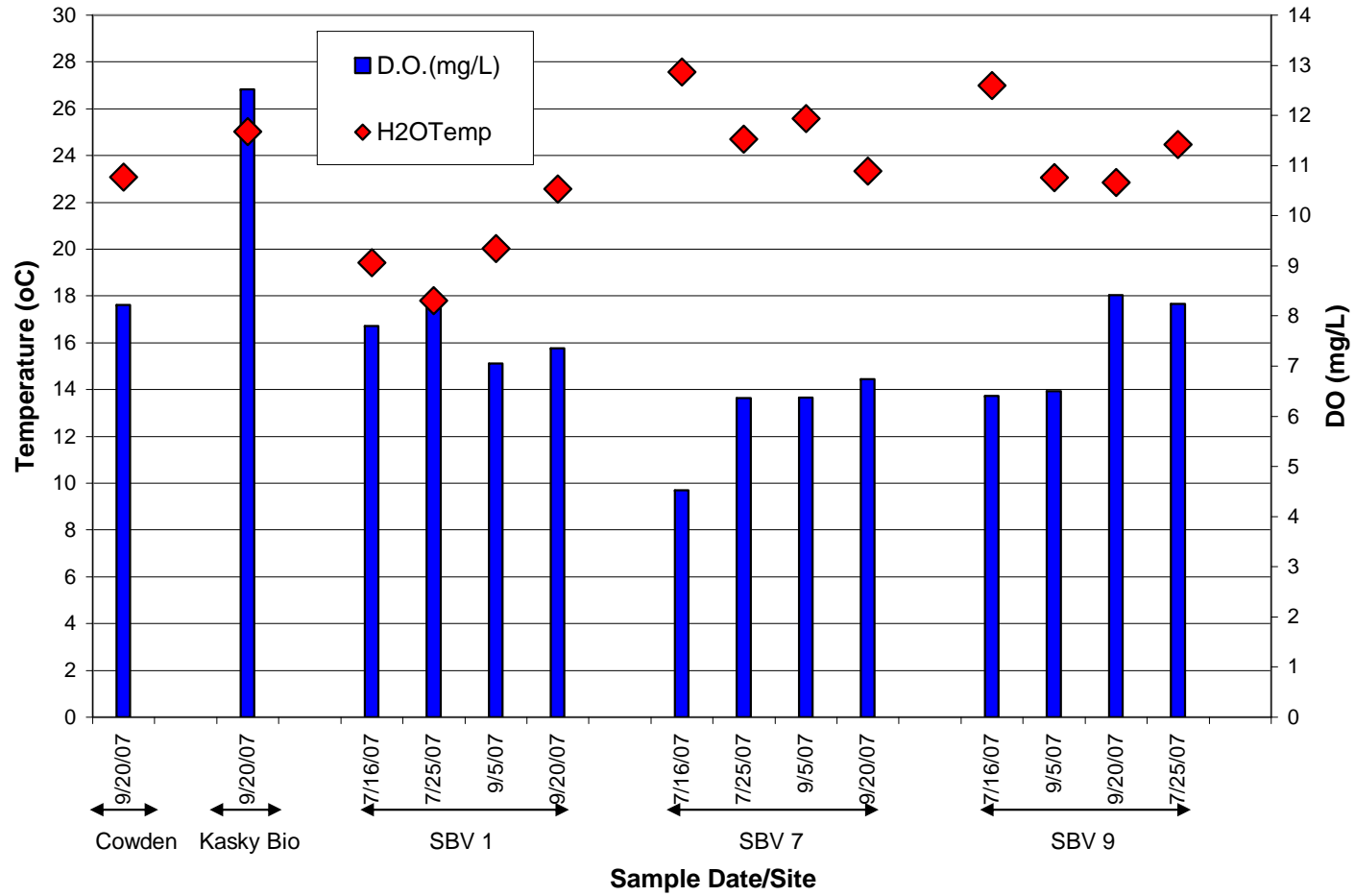
Total Organic Carbon



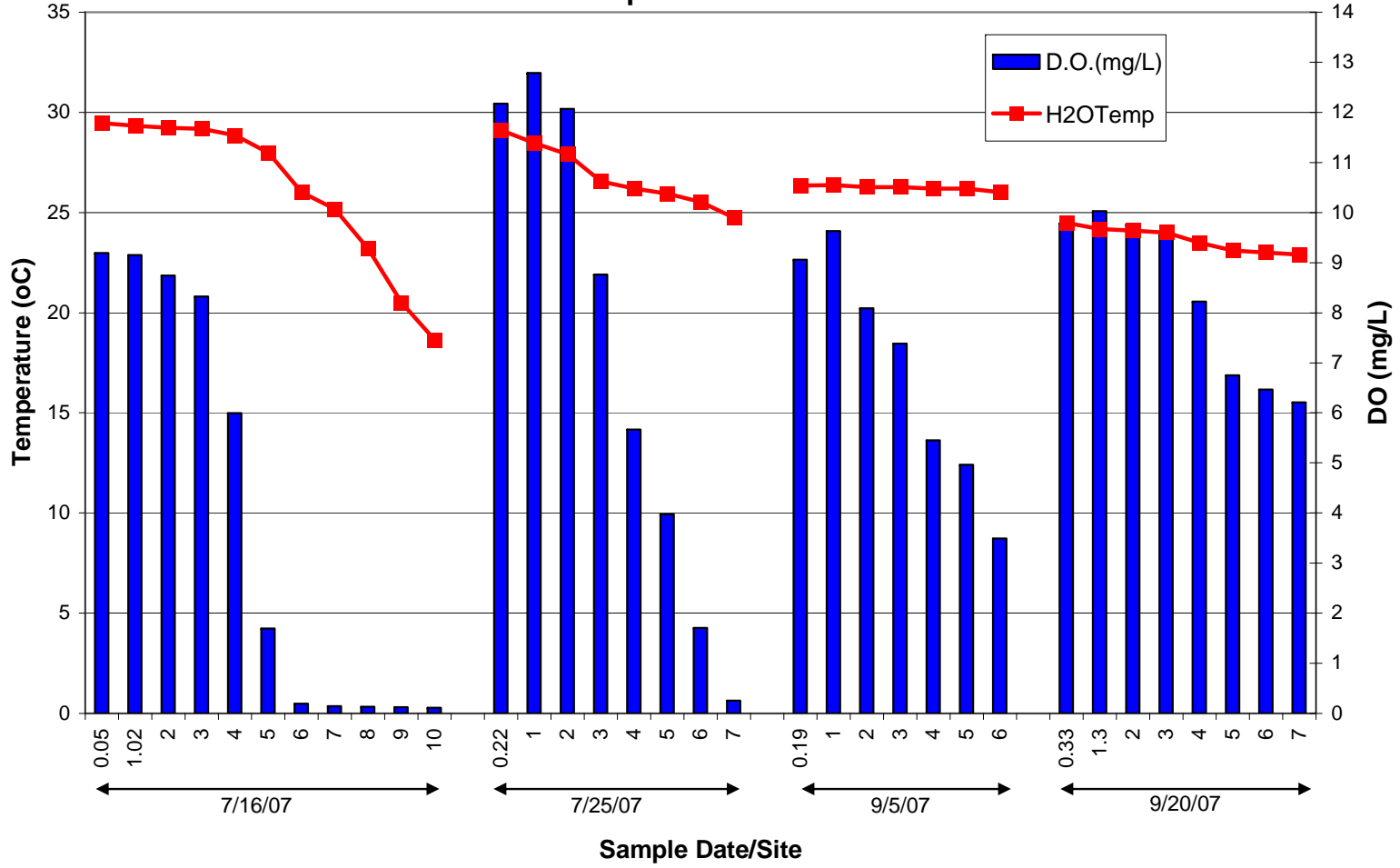
APPENDIX C

FIELD DATA GRAPHS

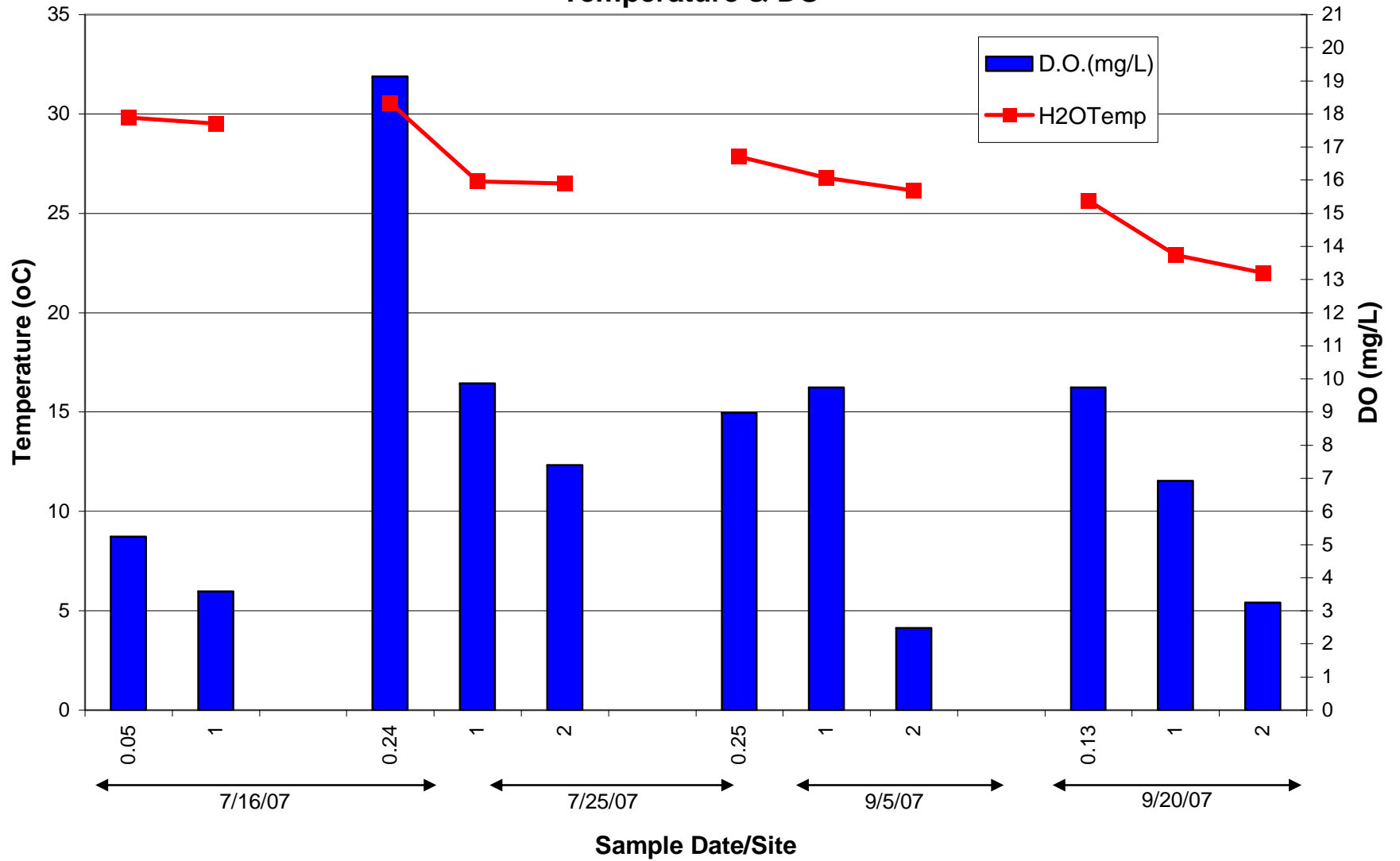
Tributary Sites Temperature & DO



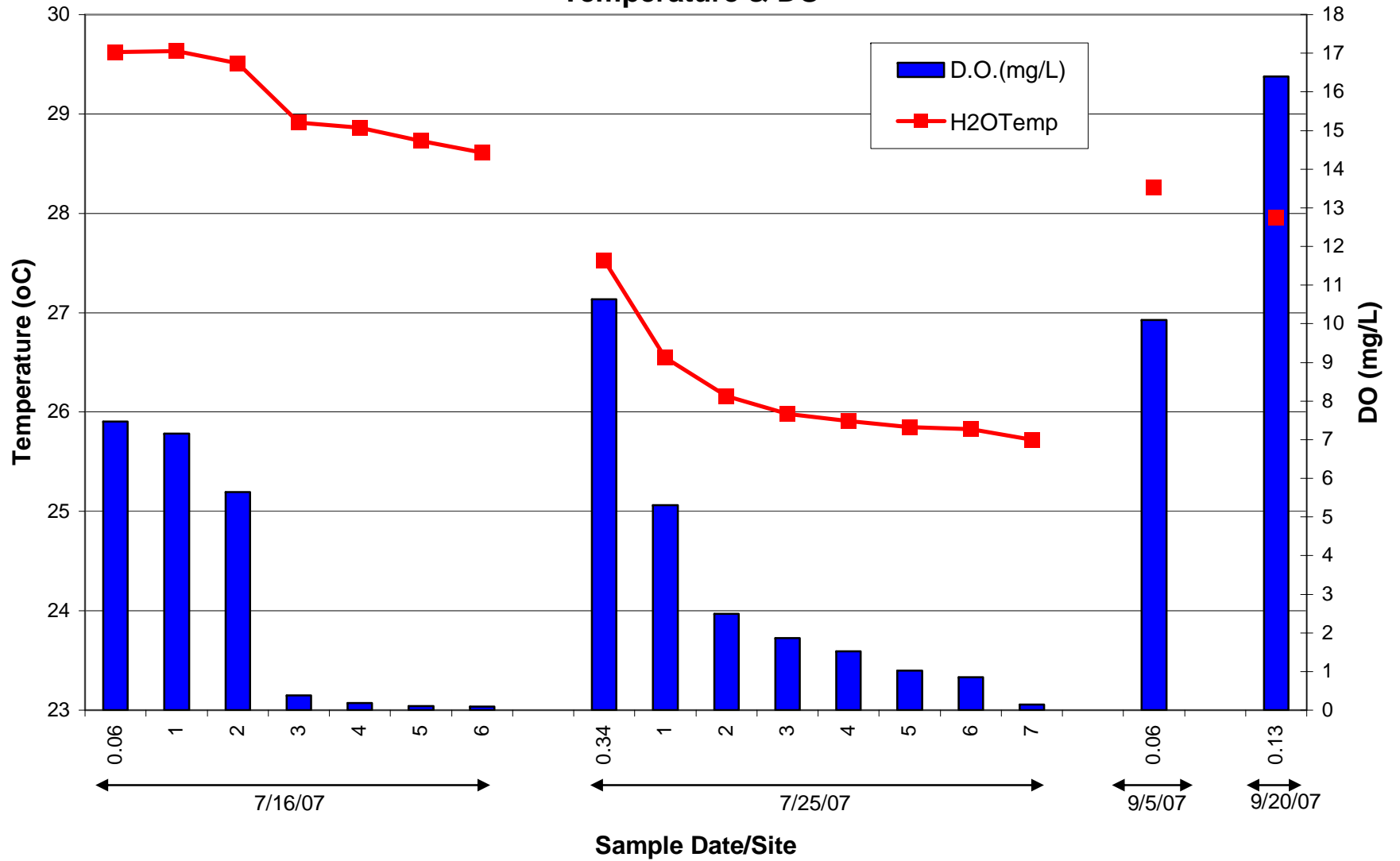
Site 2 Lake Side of Dam Temperature & DO



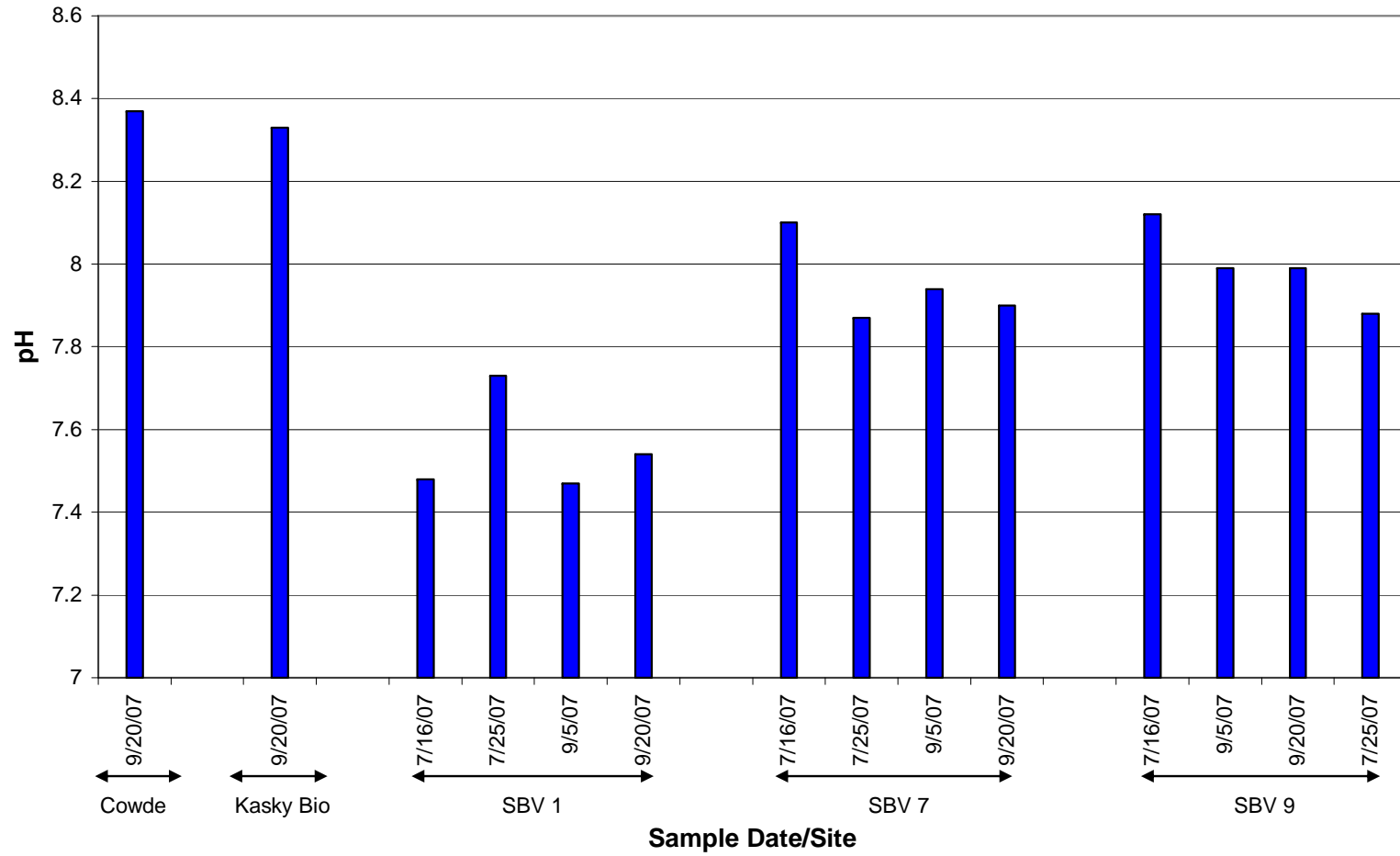
Site 4 Kaskaskia Arm Temperature & DO



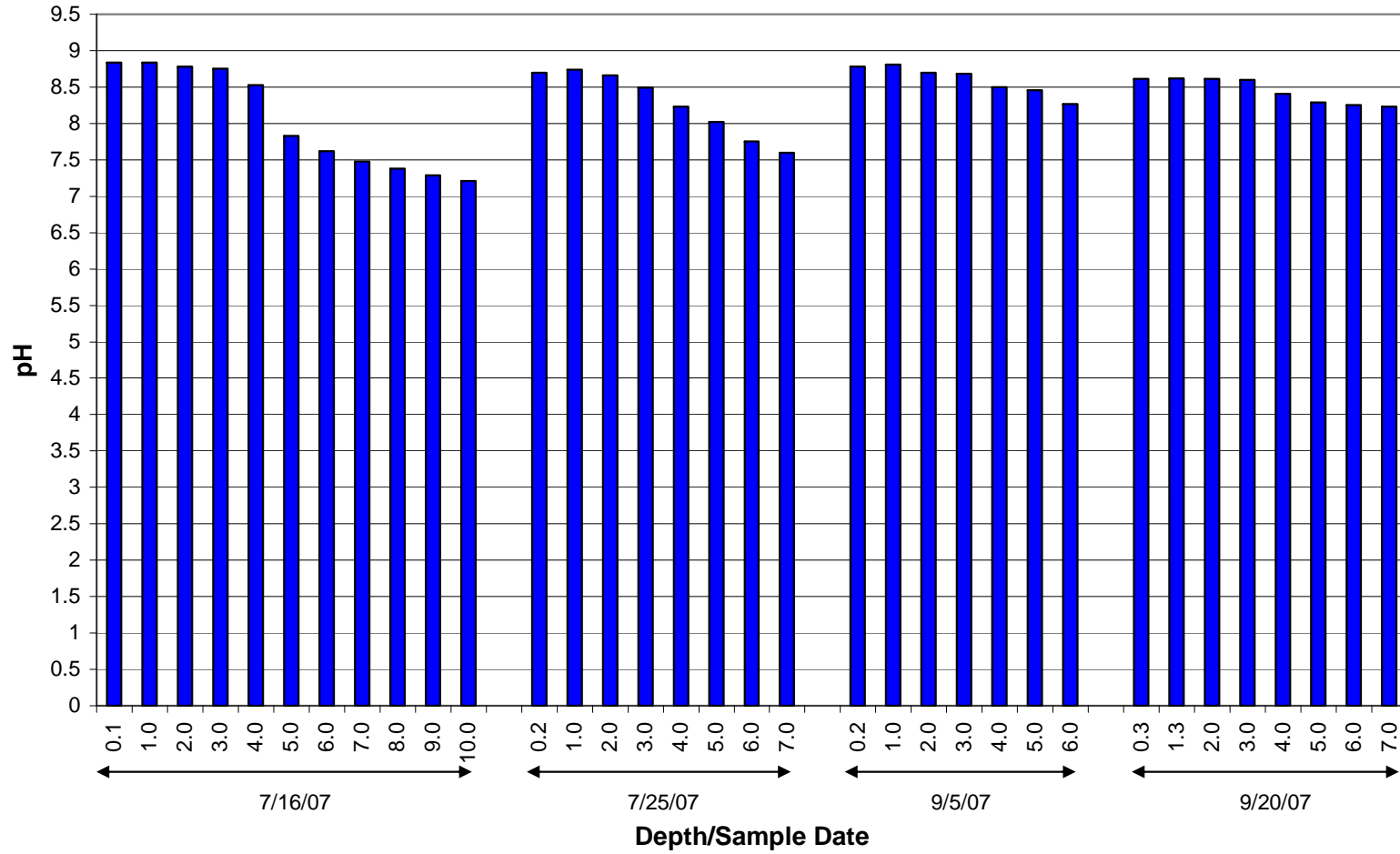
Site 11 Okaw Arm at C. & E. I. RR Bridge Temperature & DO



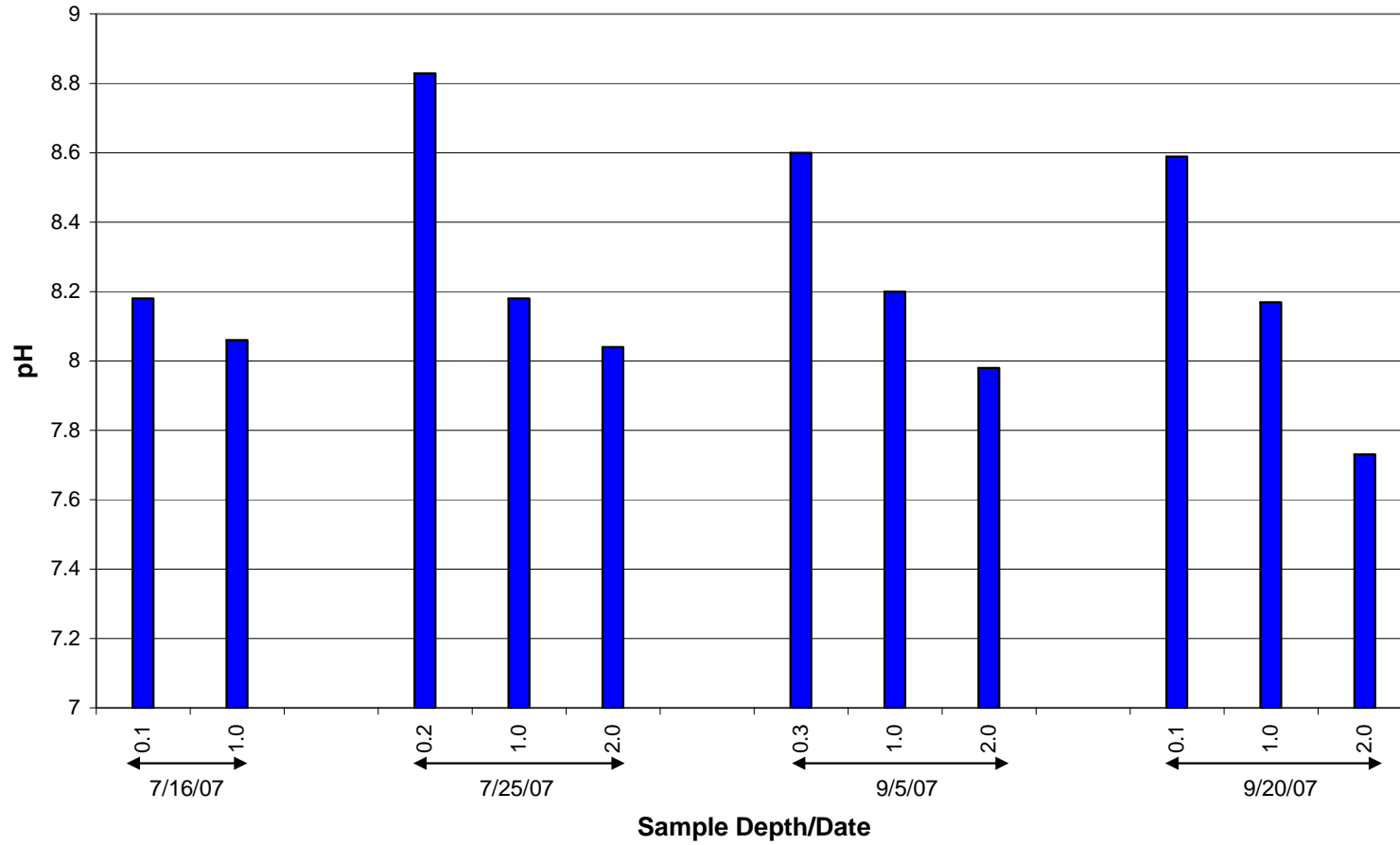
Tributary Sites pH



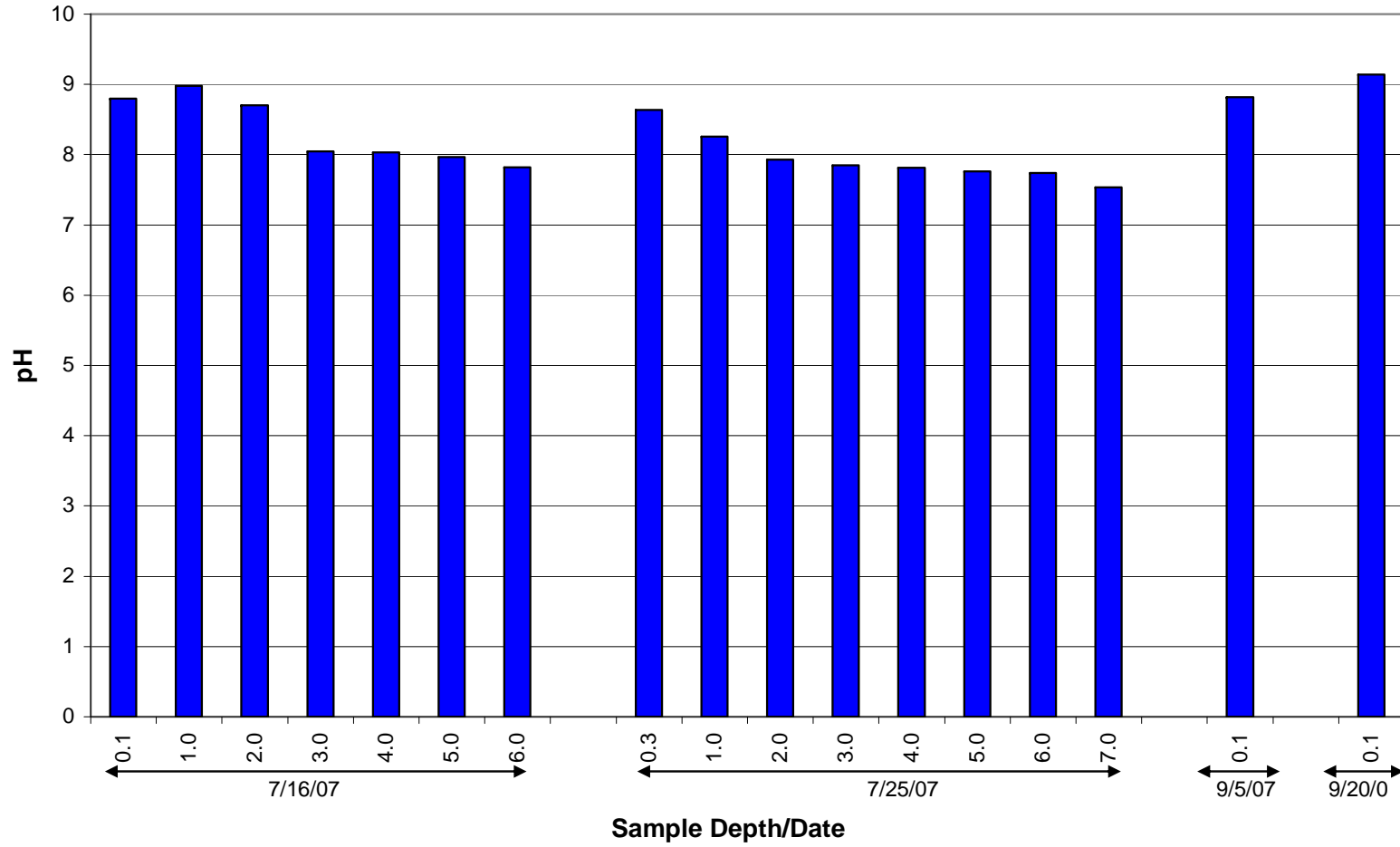
Site 2 Lake Side of Dam pH



Site 4 Kaskaskia Arm pH

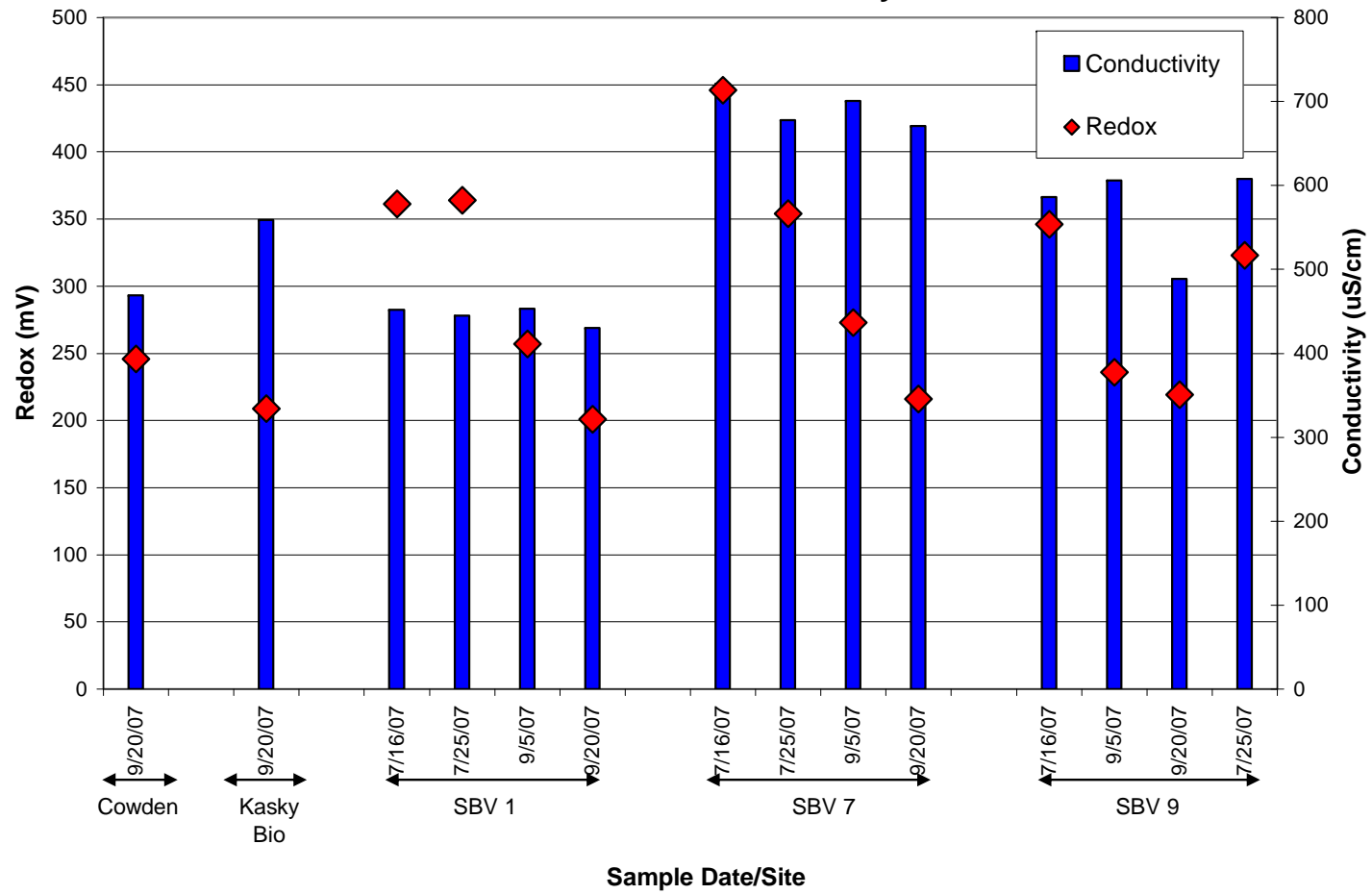


**Site 11 Okaw Arm at C. & E. I. RR Bridge
pH**

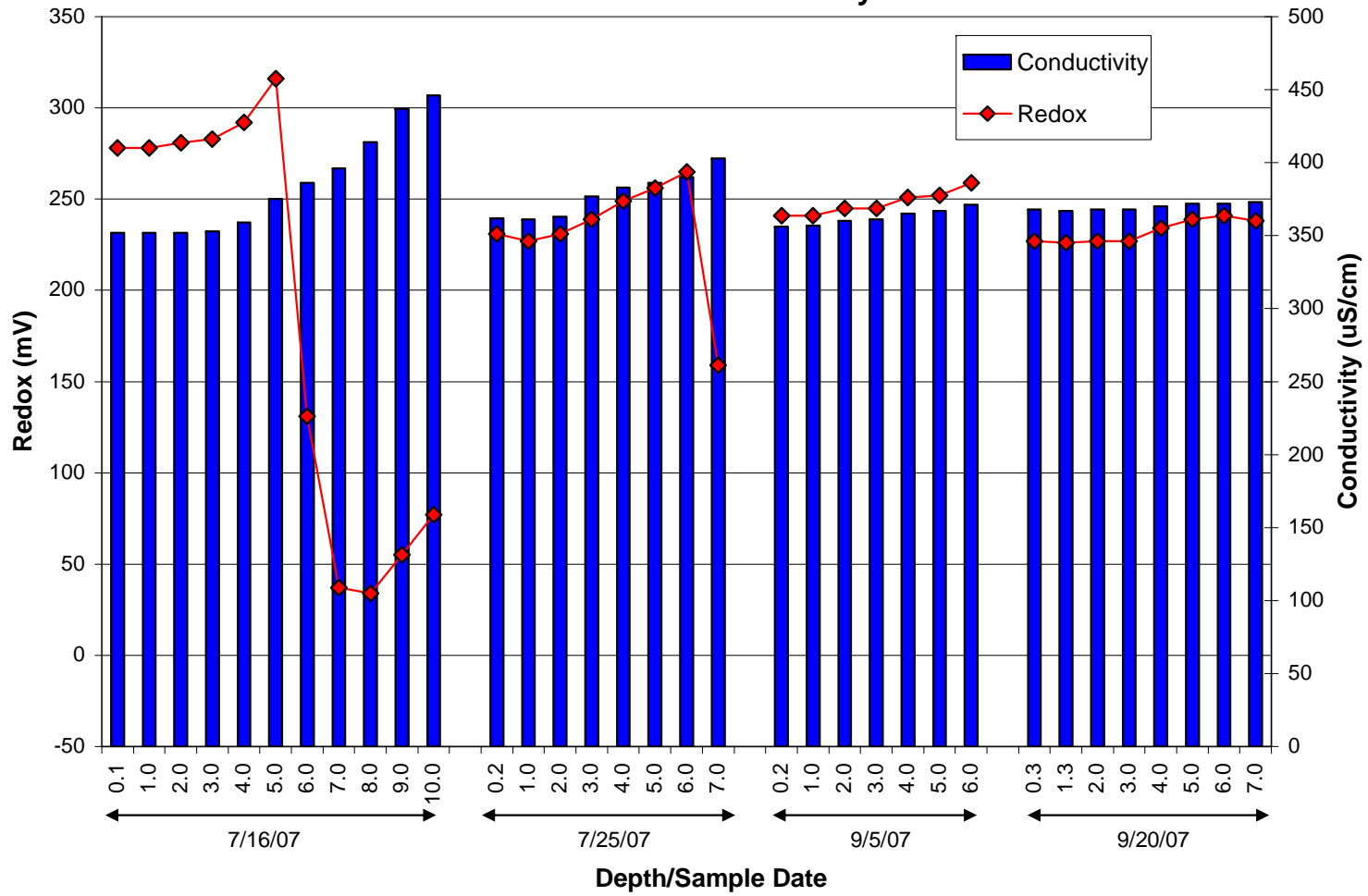


Readings taken from shore on 9/5/07 & 9/20/07 because boat was not available.

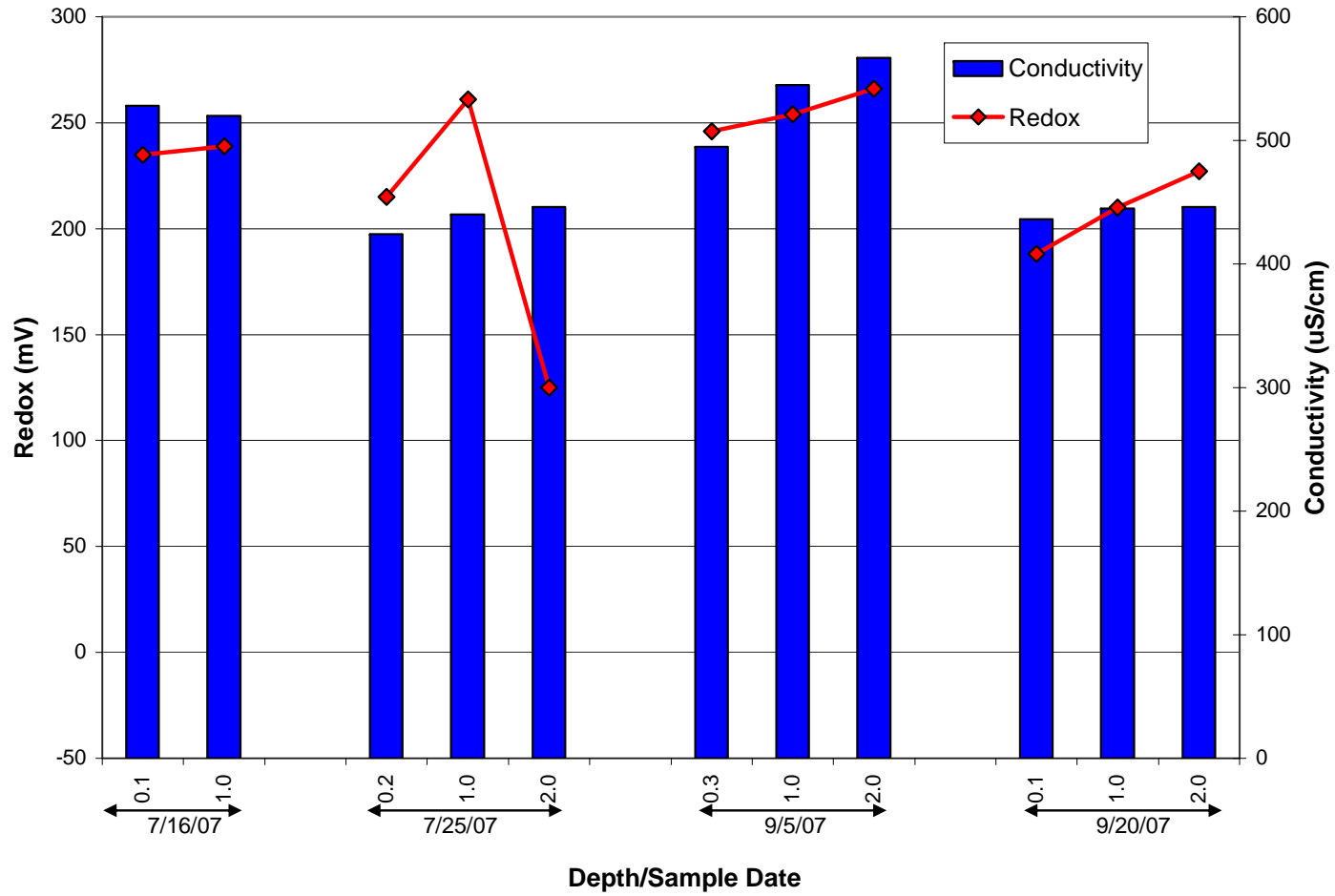
Tributary Sites Redox & Conductivity



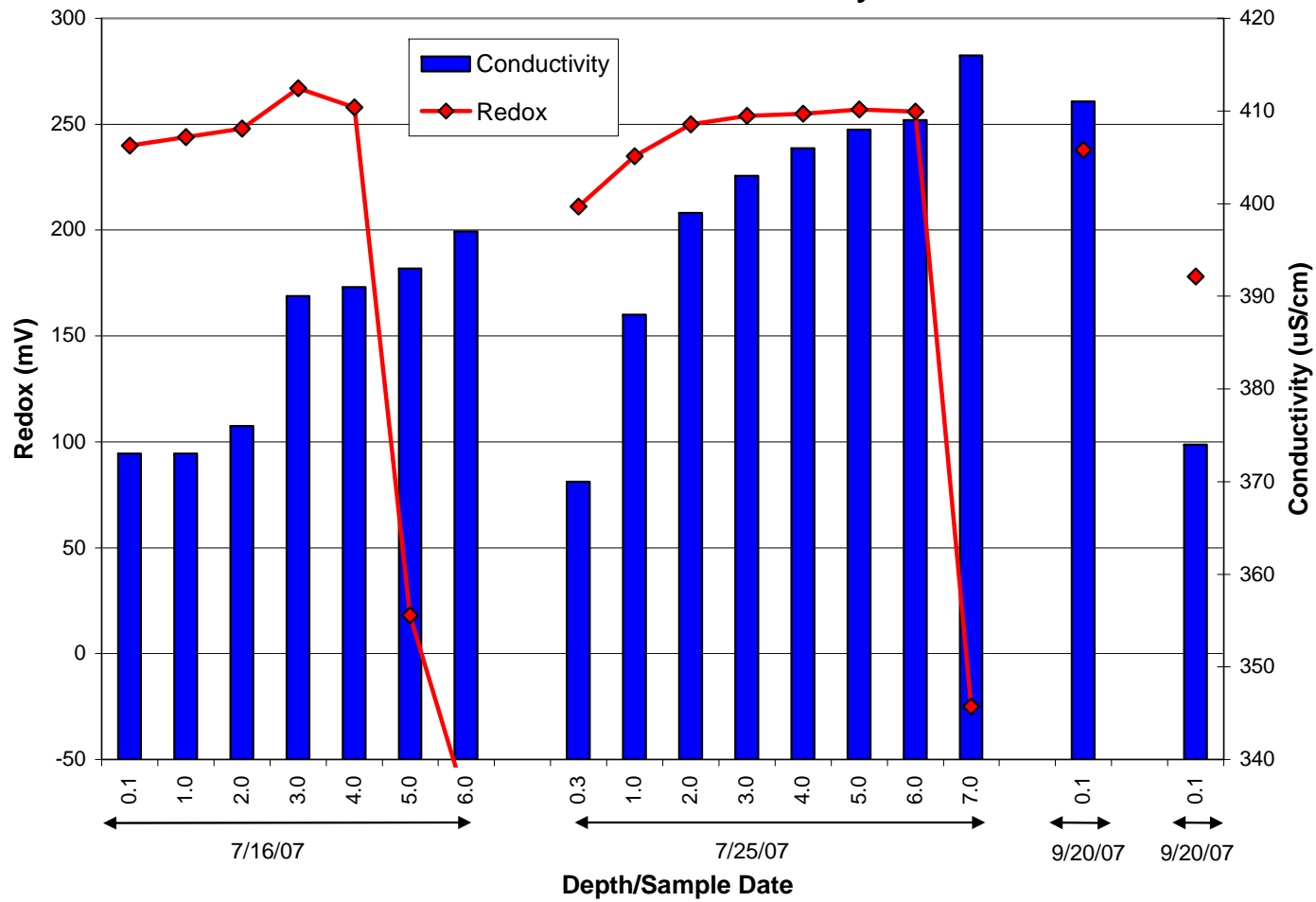
Site 2 Lake Side of Dam Redox & Conductivity



Site 4 Kaskaskia Arm Redox & Conductivity



Site 11 Okaw Arm at C. & E. I. RR Bridge Redox & Conductivity



Readings taken from shore on 9/5/07 & 9/20/07 because boat was not available.

Secchi

