

EXAMPLES OF A WELL COMPLETED RFA (REQUEST FOR ASSISTANCE)

Provided by USACE St. Louis

Jan/Feb 2019

Examples for Completing a RFA (Request for Assistance)

Sketch in levee, giving top width and approximate height for each section. Show approximate location of all damage and approximate quantities required to repair. Show Section, Township, and Range numbers or other identifier. Show Streams and lakes; show any connecting levees on adjacent property.

SECTION 36 TOWNSHIP 38 N RANGE 10 E

A North Levee by Port. 1900' of washed out Levee with large scour hole.

B Lower Mitchell Levee 400' of washed out Levee with large scour hole.

C Levee connecting with Kaskaskia Levee 1' to 3" of rock and dirt washed off top of Levee, 800'

D Levee along Hwy 61 400' washed top 1' to 5' off.

E Slide on side of Levee east of Marina bridge 200'

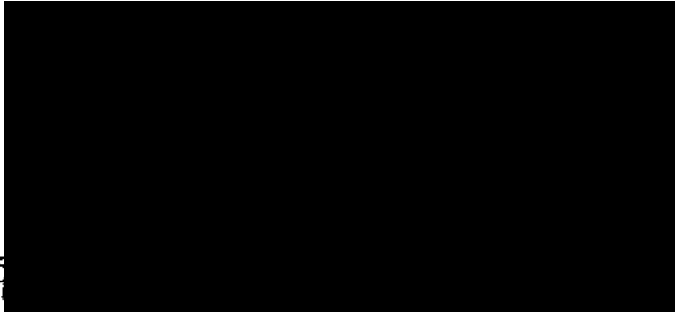
F Slide on side of Levee east of Marina bridge 150'

G Wave wash on side of Levee 3500'

H Road stone washed off top of Levee 3.5 miles

I Erosion at top of Levee 300'

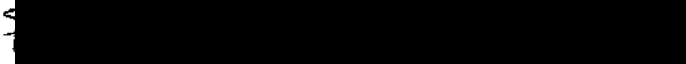
County 

Waterway causing flood: 

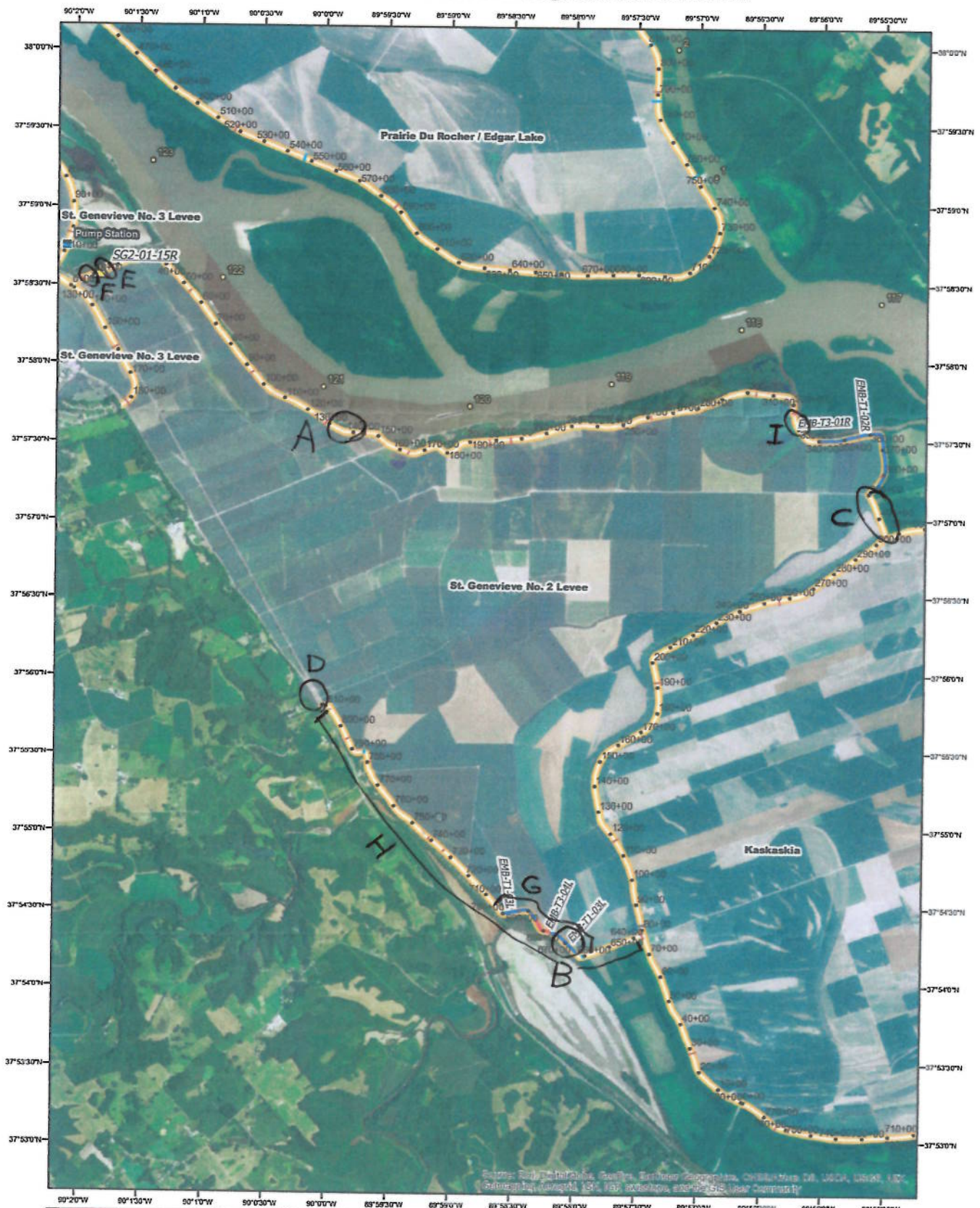
Date and Result of Last Inspection:


Repair Required: Total Length:

No. of Acres Protected by Levee:

Estimated Yearly Value of Crops: \$ 


2015 PL84-99 - Ste. Genevieve Drainage and Levee District





US Army Corps of Engineers
St. Louis District

N



5,400 2,700 0 5,400 Feet

Legend

- River Mile
- Gravity Drain
- Levee Centerline
- Protected Area
- Levee District Start/Stop

- ✱ Breach
- ⊕ Gravity Drain Repair
- △ Slide
- Erosion Type III

Sketch in levee, giving top width and approximate height for each section. Show approximate location of all damage and approximate quantities required to repair. Show Section, Township, and Range numbers or other identifier. Show Streams and lakes; show any connecting levees on adjacent property.

SECTION _____ TOWNSHIP _____ RANGE _____

- A. Riverside of levee has thin or no sod cover
between map stations 120+00 and 545+00
- B. Top of levee is ~~entirely~~ rutted near levee
station 120+00 for approximately 500 ft
from sandbagging efforts
- C. sinkhole above pump station discharge pipe

County _____ State _____

Waterway causing flood: _____

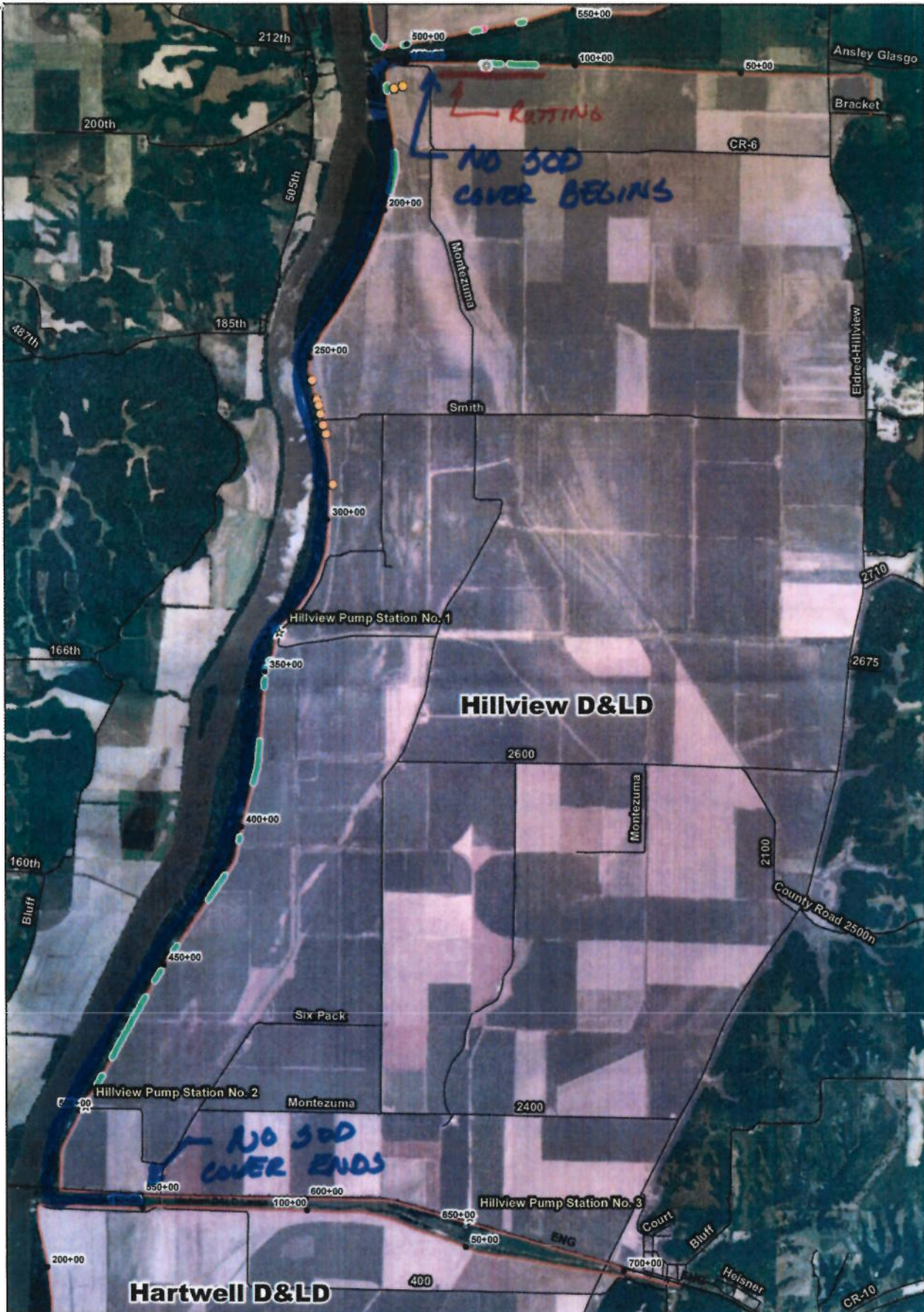
Date and Result of Last Inspection: _____

Repair Required: Total Length: _____

No. of Acres Protected by Levee: _____

Estimated Yearly Value of Crops: _____

Illinois River Flood Fight Maps - 2009-2015 Data



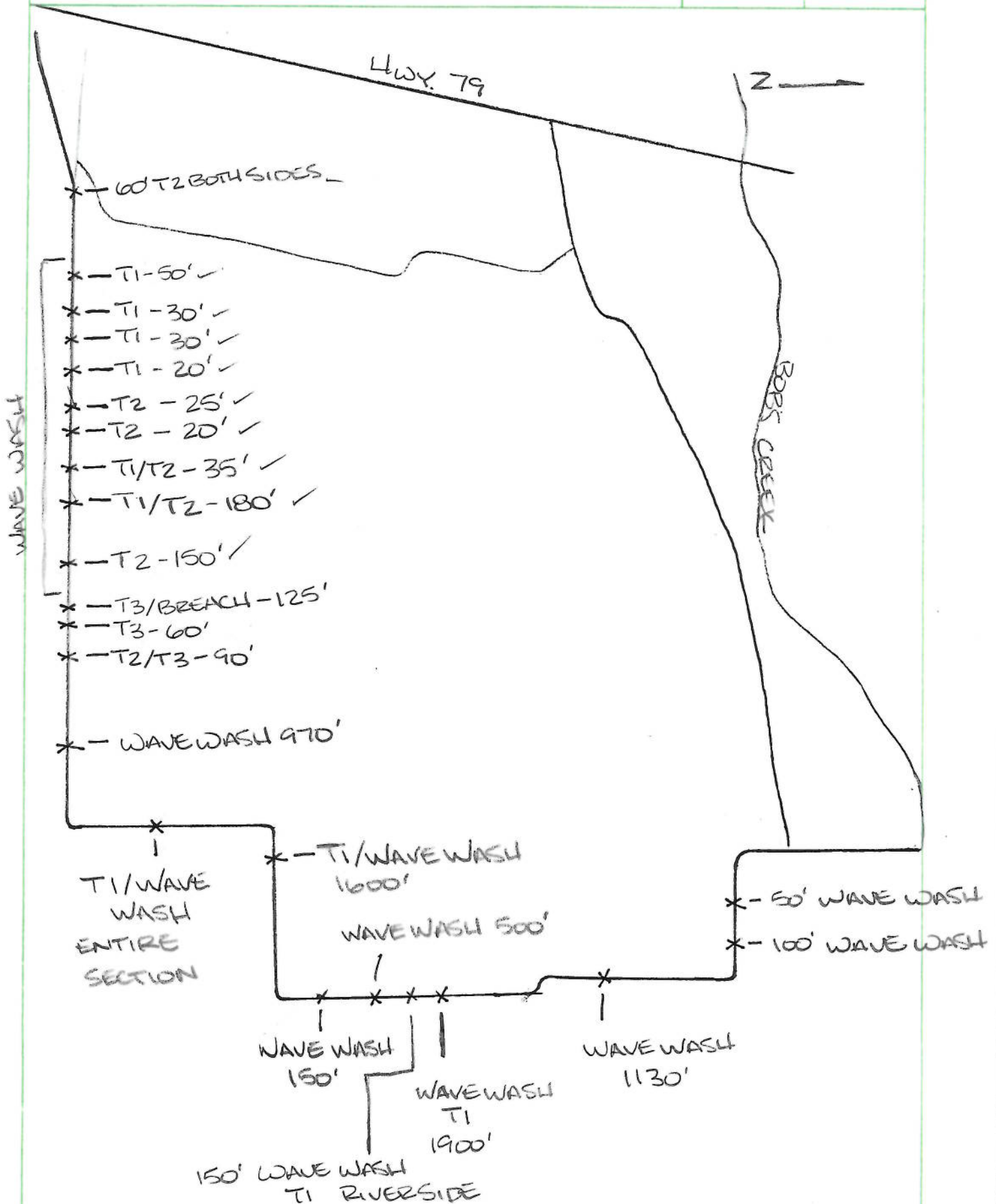
Legend

- Levee Station Points
- ☆ Pumpstation
- Relief Wells
- * Overlapping
- ⊗ Seepage
- Sandbags
- Flood Fight Point
- Levee Centerline
- Summer '15 Flashboard
- Summer '15 Sandbag
- Gravity Drains
- Leveed Area

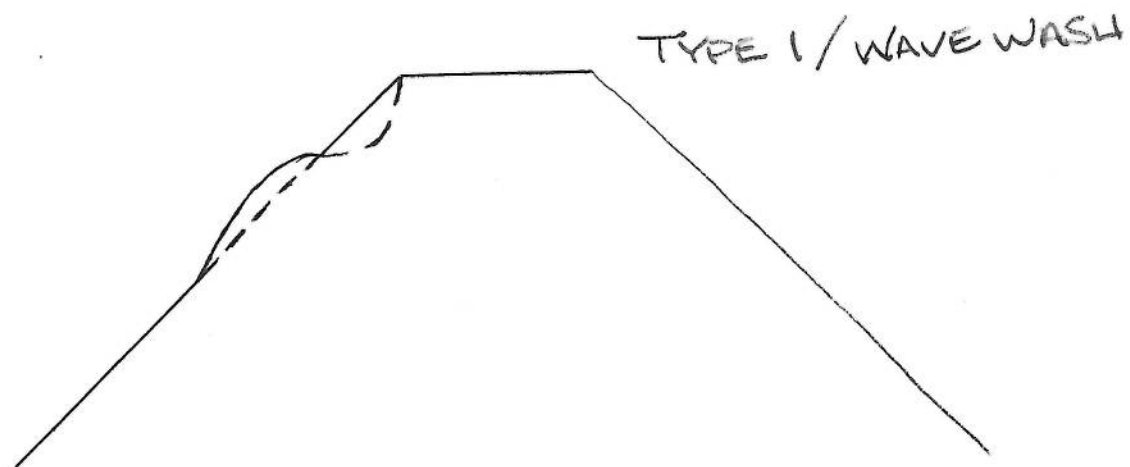
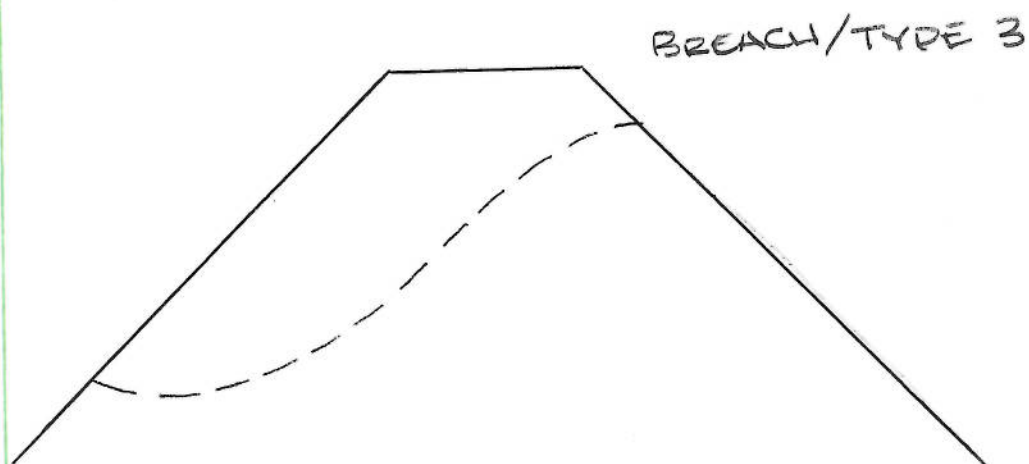


0 0.5 1 Miles

PROJECT	Page <u> </u> of <u> </u>	COMPUTED BY	DATE
SUBJECT		CHECKED BY	DATE



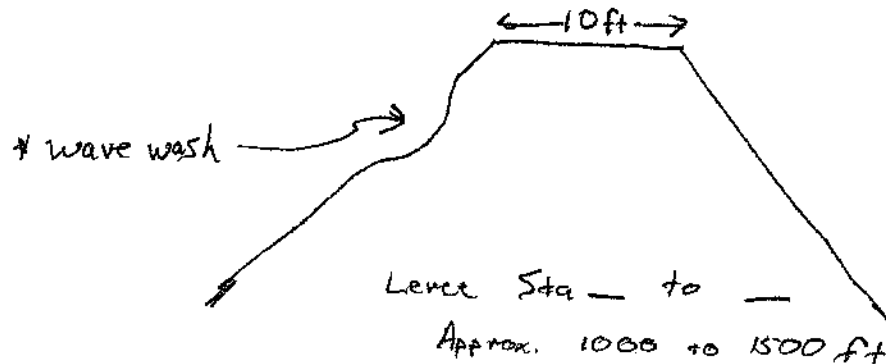
PROJECT	Page <u> </u> of <u> </u>	COMPUTED BY	DATE
SUBJECT		CHECKED BY	DATE



Approximate Station	Damage	Type	Crown		Center			Additional Info
			Removal Required	RS/LS	Length (ft)	Coordinates Lat	Long	
947+00	Slide	Toe	no	RS	45	37.693128	89.438717	
960+00	Slide	Toe	no	LS	75	37.696581	89.437834	Gravity drain structure within slide area
965+00	Slide	Surface	no	LS	50	37.697966	89.437646	
968+00	Slide	Toe	yes	RS	85	37.698460	89.437641	
970+00	Slide	Toe	yes	LS	75	37.700095	89.437492	
980+00	Slide	Toe	yes	LS	85	37.702684	89.437639	
990+00	Slide	Surface	yes	LS	35	37.704963	89.437753	
1011+00	Slide	Toe	yes	LS/RS	90/160	37.709305	89.437815	Slides on both sides of levee
1013+00	Slide	Toe	yes	LS	60	37.710127	89.437815	
1017+00	Slide	Toe	no	RS	230	37.713210	89.435036	
1027+00	Slide	Toe	yes	LS	90	37.713581	89.434330	
1027+50	Slide	Toe	yes	RS	185	37.713707	89.433951	
1041+00	Slide	Toe	yes	LS	70	37.714937	89.430279	
1042+50	Pipe Failure					37.715261	89.429414	Large depression in berm directly behind GD Str
1055+00	Slide	Toe	yes	RS	75	37.716462	89.426164	
1061+00	Slide	Toe	no	RS	55	37.717360	89.423218	
1195+00	Slide	Toe	No	LS	50	37.749077	89.446097	Back levee close to Grimsby - North of powerlin
442+00	Slide	Surface	no	LS	55	37.747891	89.612000	Main line levee
265+00	Slide	Toe	no	RS	110	37.767811	89.658828	Main line levee

Sketch in levee, giving top width and approximate height for each section. Show approximate location of all damage and approximate quantities required to repair. Show Section, Township, and Range numbers or other identifier. Show Streams and lakes; show any connecting levees on adjacent property.

SECTION 36 TOWNSHIP 12 N RANGE 13 W



* No survey but approx. quantities are:

Fill/scour repair: 250 to 500 cu. yds

seeding: 0.5 to 1.0 acres

County _____

Waterway ca _____

Date and Re _____

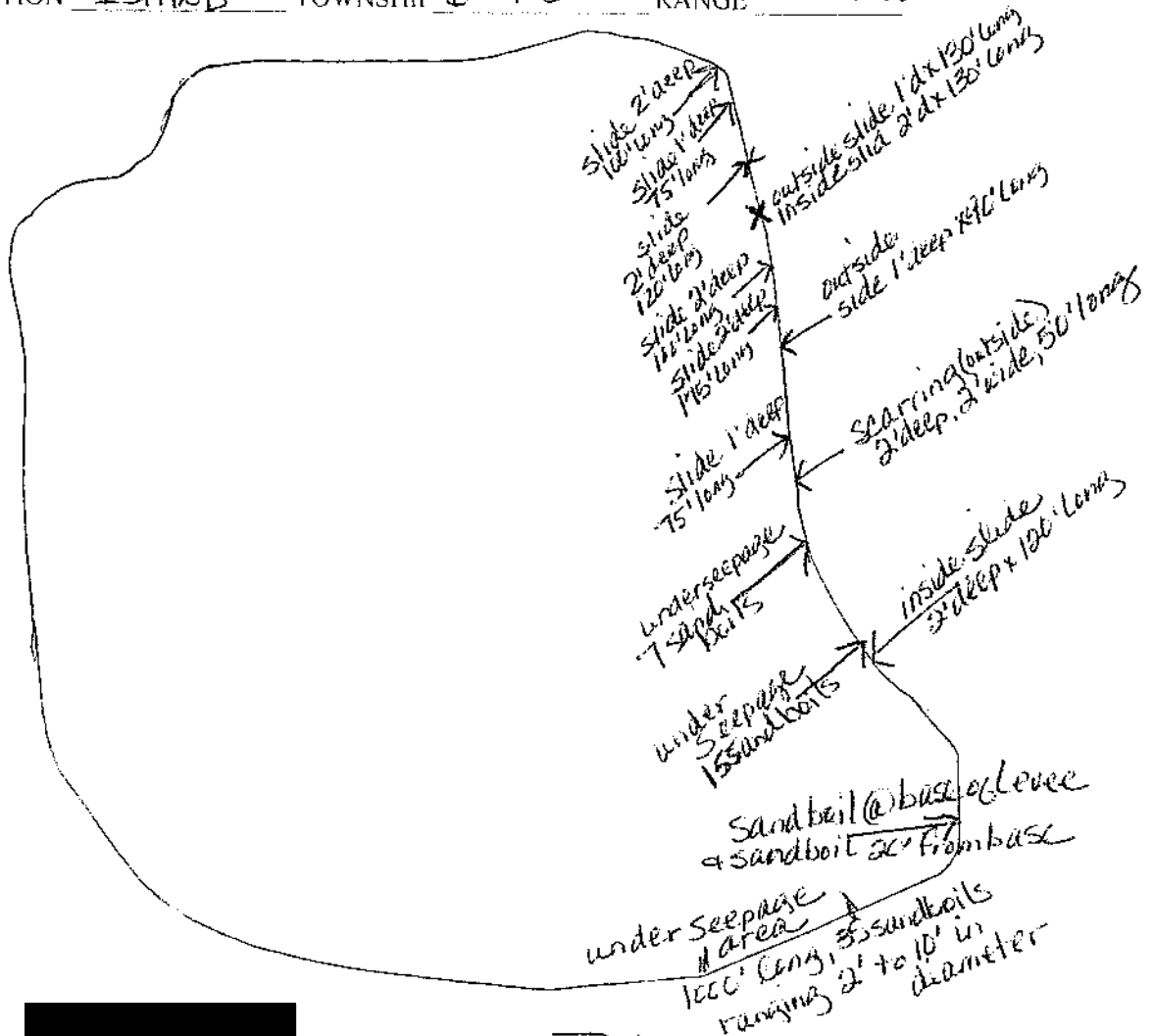
Repair Requ _____

No. of Acres _____

Estimated Y _____

Sketch in levee, giving top width and approximate height for each section. Show approximate location of all damage and approximate quantities required to repair. Show Section, Township, and Range numbers or other identifier. Show Streams and lakes; show any connecting levees on adjacent property.

SECTION KASKASKIA ISLAND TOWNSHIP 6-7 S RANGE 8-7 W



County

State

ILLINOIS

Waterway causing flood:

Date and Result of Last Inspection:

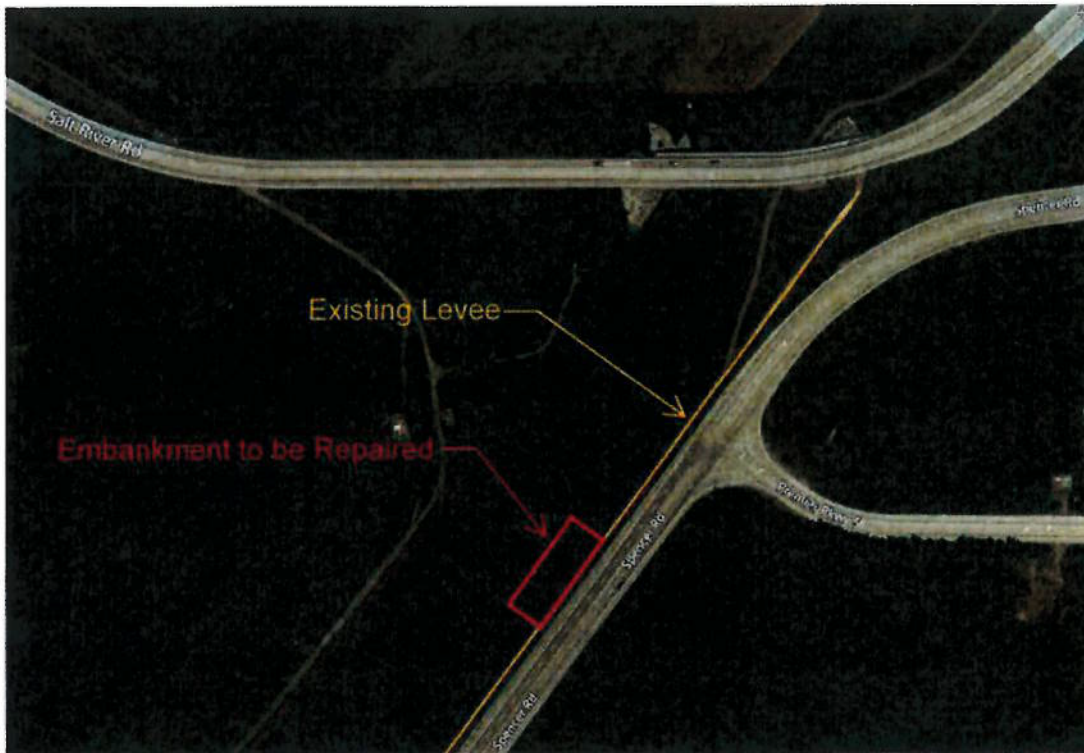
Repair Required: Total Length:

No. of Acres Protected by Levee:

Estimated Yearly Value of Crops:

Sketch in levee, giving top width and approximate height for each section. Show approximate location of all damage and approximate quantities required to repair. Show Section, Township, and Range numbers or other identifier. Show Streams and lakes; show any connecting levees on adjacent property.

SECTION _____ TOWNSHIP 48N RANGE 6E



Note: Exact damage was estimated and measured by Project Engineers Patrick VanDeWiele and Brittany Saulnier

County _____

Waterway _____

Date and _____

Repair Re _____

No. of Ac _____

Estimated _____