



US Army Corps
of Engineers
Saint Louis District

Mississippi River Between Missouri River and Minneapolis, Minnesota (Upper River)

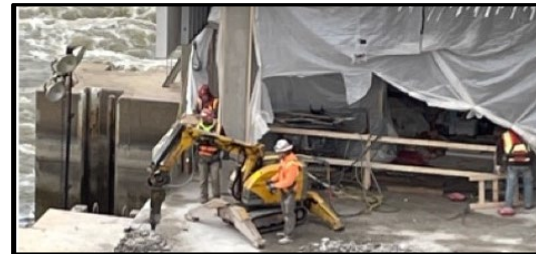
River and Harbor Acts of 1930, as amended Public Resolution No. 10 (1932)

Operation and Maintenance (NAV)

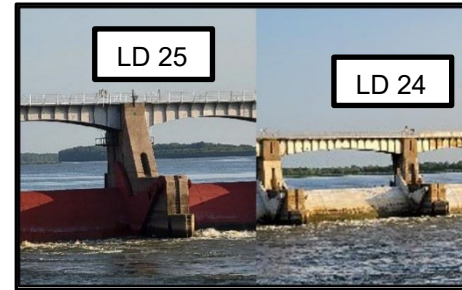
Information Paper

Location and Description: Project area extends from the mouth of the Missouri River at St. Louis upstream to Lock and Dam 22 tail water, includes 105 miles of river and 50,000 acres of public lands. The project provides a nine-foot navigation channel via a system of locks and dams; channel maintenance; dike and revetment; dredging; environmental stewardship responsibility as well as land and water-based recreational opportunities.

- FY23 Allocation: \$89,246k (baseline service level \$28,617k).
 - Operate and Maintain project at an acceptable level of service.
 - Completed non-routine repairs to prioritized backlog to include L24 dewatering and inspections, scour repairs to L25 guidewall and Phase II Mel Price Liftgate Replacement.
 - BIL - Install L25 Bulkhead Sill beam, award task orders L24 Dam Pier Rehab, repair storm damages, Award Mel Price Lift Gate replacement, phase III, shoreline/spillway repairs, rehabilitation of Mel Price Emergency crane, Water Control Manual Updates.
 - Lock & Dam No 24 and Lock & Dam 25 lock closures Jan-Feb 2023.
 - Mel Price Main Lock closures Jan-Mar 2023.
- Activities after FY23 (top items listed)
 - Operate and Maintain project.
 - Complete Mel Price Liftgate Replacement.
 - Replace L24 Failed Bridge Columns.
 - Replace L24 Bulkhead Crane.
 - Award Task Orders, L24 IDIQ Rehab Dam Piers.
- Status
 - Commercial products passing through the project in FY21 were valued at an estimated \$22 billion.
 - Continued unscheduled closures at Mel Price due to chronic liftgate structural failure issues.
 - Levels of public service reduced at National Great Rivers Museum due to recreation funding below baseline.
 - Issues with silt at marinas and boat ramps.



Mel Price Lock liftgate replacement, supply & phase I construction contract awarded in FY21; Final Phase award Dec 2023



Lock 24 Dam Pier Rehab to include replacement of failed Bridge Columns, failing Gate Hoist Chains, Rehab of Bridge, and Repairs to Gates; \$70M critical backlog



Lock 24 Dam Pier Bridge Columns, failed condition due to ASR concrete

VALUE TO NATION

Latest Ton Miles	4,766,124,000
Latest Tonnage	61,466,000
Project Cost per Ton	\$0.59
FY19 Visitor Spending	\$34,767,000
FY19 Jobs Supported (Rec spending only)	278
Rec Area Management	36
Acres Managed	50,000

	FY20	FY21	FY22	FY23
- Federal Allocation	\$30,353k	\$41,801k	\$31,854k	\$30,366k
- Supplemental	\$369k	\$369k	\$0	\$0
- 1% Emergency	\$0	\$0	\$0	\$0
- BIL	\$0	\$0	\$26,260k	\$57,880k
- DRSSA	\$0	\$0	\$4,019k	\$1,000k
-Non Appropriated Contributions	\$650k	\$	\$0	\$0
- Total Visits	1,376,000	1,379,718	1,303,000	TBD