



**US ARMY CORPS  
OF ENGINEERS  
St. Louis District  
Gateway to Excellence**

# Public Notice

Reply To:  
U.S. Army Corps of Engineers  
Attn: CEMVS-OD-F  
1222 Spruce Street  
St. Louis, MO 63103-2833

Public Notice No.  
**P-2858**  
Public Notice Date  
**December 20, 2013**  
Expiration Date  
**January 9, 2014**

**Postmaster Please Post Conspicuously Until:**

Comments on the described work should reference the U.S. Army Corps of Engineers Public Notice number shown above and must reach this office no later than the above expiration date to become part of the record and be considered in the decision. Comments should be mailed to the following address:

U.S. Army Corps of Engineers  
ATTN: CEMVS-OD-F (Charles Frerker)  
1222 Spruce Street  
St. Louis, Missouri 63103-2833

1. The Jefferson County Port Authority, represented by Ms. Janice Luchan, 5217 Highway B, Hillsboro, Missouri 63050, (636) 797-6048, requests authorization to create a fleeting facility to supply market demand for barge storage in the Jefferson County area. The maximum number of barges to be moored at any given time is 60, which would be arranged in a six-wide by 10-long configuration (210-feet-wide by 2000-feet-long). At maximum fleet configuration, the most riverward extent of the outer row of barges would extend approximately 395 feet from the average navigation traffic flow path, which is located near the center of the river. No dredging or placement of fill is required to complete the requested activity. The barges would be held in place by excavating and installing six concrete dead man anchors in the river bank. Chains attached to the buried dead man mooring structures would extend riverward to float buoys and positioning sinkers placed within the river near the fleet. In addition, a single anchor buoy system would also be installed in the river at the upstream end of the proposed fleet to help stabilize and hold the barges in place. The floating buoys would be attached to mooring features to facilitate barge attachment. Fleet construction activities would be completed from the river using work barges or in combination with land access from the existing rocked Ferry Road. Construction material would be stored in upland areas during non-work periods and would remain on site for the minimum time required to complete construction. Once construction is complete, all material would be removed from the upland areas and all disturbed areas would be restored to pre-construction conditions. Disturbed upland areas not covered with paving or stone would be seeded with native grass for erosion control. No tree clearing is required for construction of the fleeting facility. Detailed construction methods, dimensions, and quantities will be further determined by the winning bid construction contractor. Any construction variations determined significant by the U.S. Army Corps of Engineers Regulatory Branch shall be coordinated with the contractor to determine the need for additional permitting or permit modification. The fleet is proposed along the right descending bank of the Mississippi River, between approximate river mile 152.7 and 152.2, in Section 20, Township 41 North, Range 6 East, near Herculaneum, in Jefferson County, Missouri. (See Attached Figures).
2. Based on our initial processing of the applicants' proposal, the action is not expected to result in any significant adverse effects on the quality of the human environment. However, a final determination of the need for an environmental impact statement will not be made until the St. Louis District has completed its full review of this application. The review will include our evaluation of any written responses received as a result of this public notice.
3. This permit will be processed under the provisions of **Section 10 of the Rivers and Harbors Act**.

4. The St. Louis District will evaluate information provided by the State Historic Preservation Officer and the public in response to this public notice. The consulting firm Prairie Archaeology & Research conducted a database review for potential historical and archaeological sites within the vicinity of the proposed barge fleeting facility. The consulting firm found no historic sites or structures within vicinity of the proposed fleet.

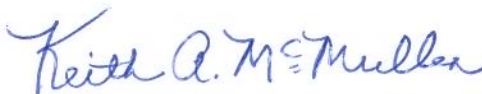
5. The proposed project is within the range of the federally endangered Indiana bat (*Myotis sodalis*), gray bat (*Myotis grisescens*), Pallid Sturgeon (*Scaphirhynchus albus*), pink mucket (*Lampsilis abrupta*), Scaleshell (*Leptodea leptodon*), Sheepnose (*Plethobasus cyphus*), Snuffbox (*Epioblasma triquetra*), and the Spectaclecase (*Cumberlandia monodonta*). A preliminary determination, in compliance with the Endangered Species Act as amended, has been made that the proposed fleet activity and location is not likely to adversely affect species designated as endangered, or adversely affect critical habitat. In order to supplement our determination, this public notice solicits comments from the U.S. Fish and Wildlife Service and other interested agencies and individuals.

6. Interested parties, particularly navigation interests, Federal and state agencies for the protection of environmental and cultural resources, and the officials of any state, town, or local associations whose interest may be affected by this work, are invited to submit to this office written facts, arguments, or objections on or before **January 9, 2014**. The decision whether to authorize the activity will be based on an evaluation of the probable impact, including cumulative impacts of the proposed activity on the public interest. The decision will reflect the national concern for both protection and utilization of important resources. The benefits, which reasonably may be expected to accrue from the proposal, must be balanced against its reasonably foreseeable detriments. All factors which may be relevant to the proposal will be considered; among those are conservation, economics, aesthetics, general environmental concerns, wetlands, historic properties, fish and wildlife values, flood hazards, floodplain values, land use, navigation, shoreline erosion and accretion, recreation, water supply and conservation, water quality, energy needs, safety, food and fiber production, mineral needs, consideration of property ownership, and, in general, the needs and welfare of the people. Project authorization will be granted only if it is found not contrary to the public interest.

7. The Corps of Engineers is soliciting comments from the public; Federal, state, and local agencies and officials; and other interested parties in order to consider and evaluate the impacts of this proposed activity. Any comments received will be considered by the Corps of Engineers to determine whether to issue, modify, condition, or deny authorization for this proposal. To make this decision, comments are used to assess impacts on endangered species, historic properties, water quality, general environmental effects, and the other public interest factors listed above. Comments are also used to determine the overall public interest of the proposed activity.

8. Any person may request that a public hearing be held to consider the applicant's proposal, provided such request identifies significant issues that would warrant additional public review and comment. All replies to this public notice must be submitted in writing and sent to the U.S. Army Corps of Engineers, St. Louis District, 1222 Spruce Street, Attn: OD-F (Frerker), St. Louis, Missouri 63103-2833, or by electronic mail to [charles.f.frerker@usace.army.mil](mailto:charles.f.frerker@usace.army.mil), on or before **January 9, 2014**.

9. In accordance with 33 CFR 325.3, it is presumed that all interested parties and agencies will wish to respond to public notices; therefore, a lack of response will be interpreted as meaning that there is no objection to the proposed project.

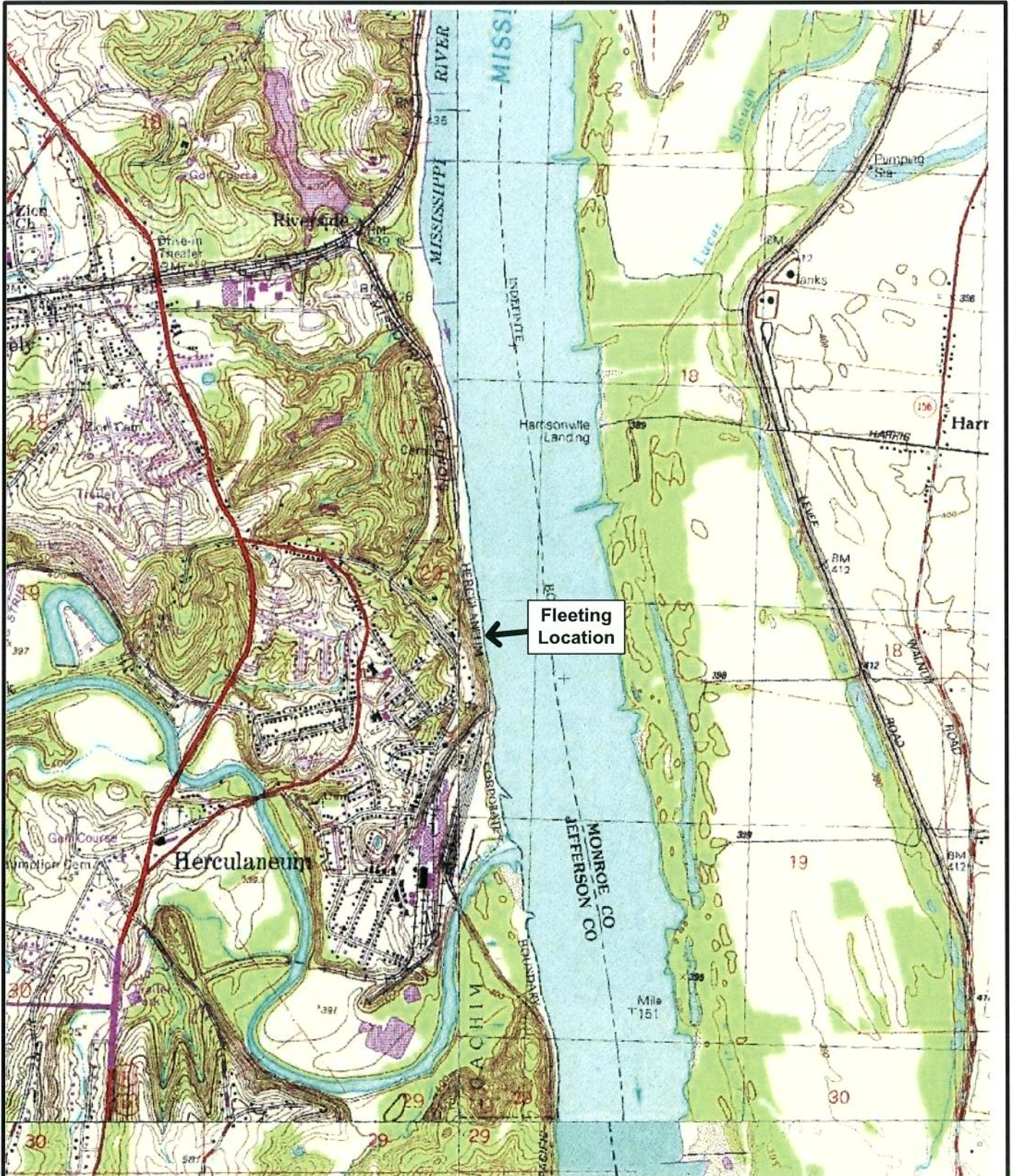


for Danny D. McClendon  
Chief, Regulatory Branch

Attachments

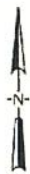
NOTICE TO POSTMASTERS:

It is requested that this notice be conspicuously and continually posted for 21 days.



© Copyright Hanson Professional Services Inc. 2013

Source: USGS Geospatial Data Gateway Jefferson County, Missouri USGS 7.5 minute Quadrangle Map



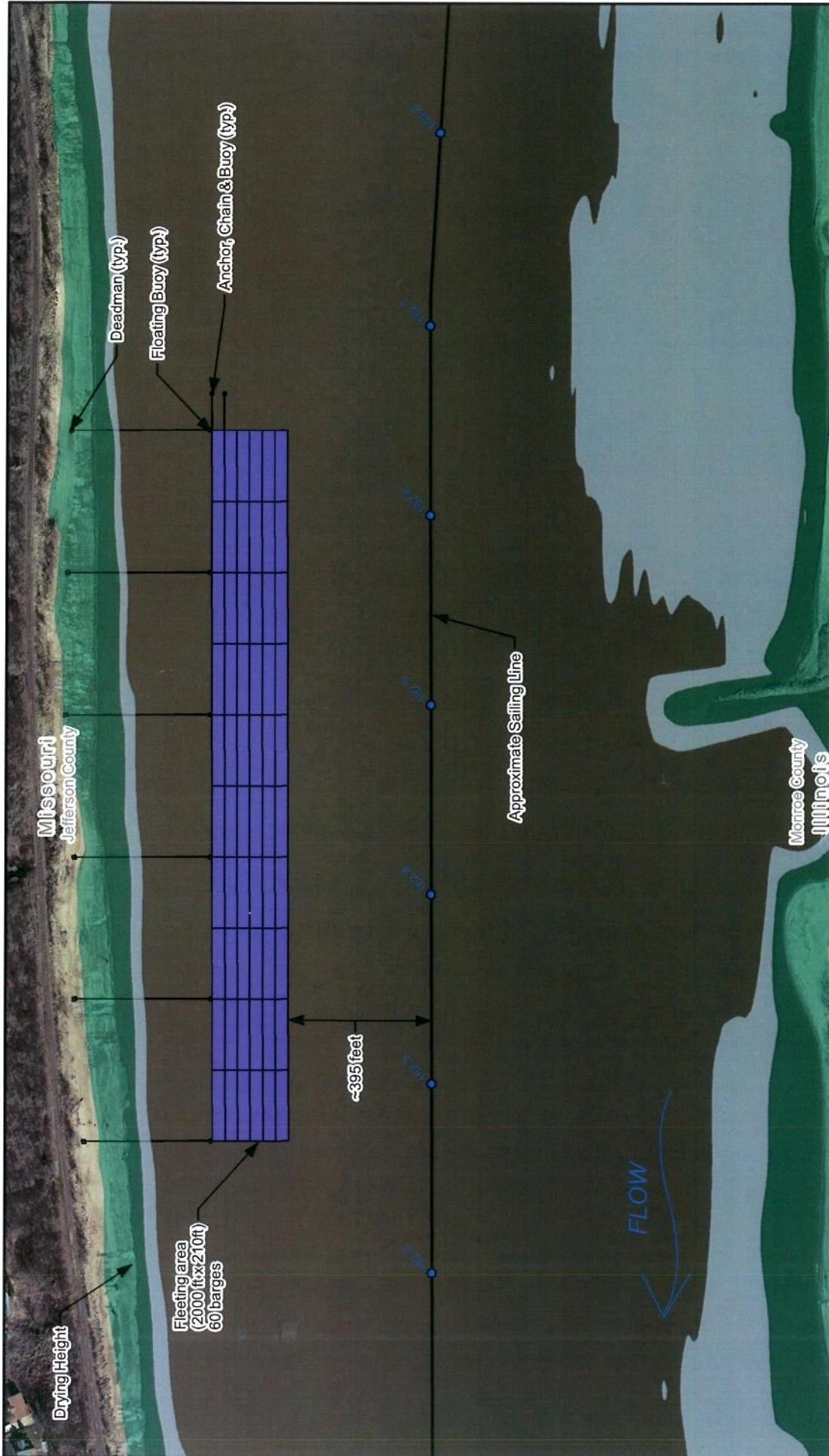
### USGS Topographic Map

Jefferson County Port Authority  
Barge Fleeting Locations  
Jefferson County, Missouri

JOB NO. 12L0069

FIGURE 1

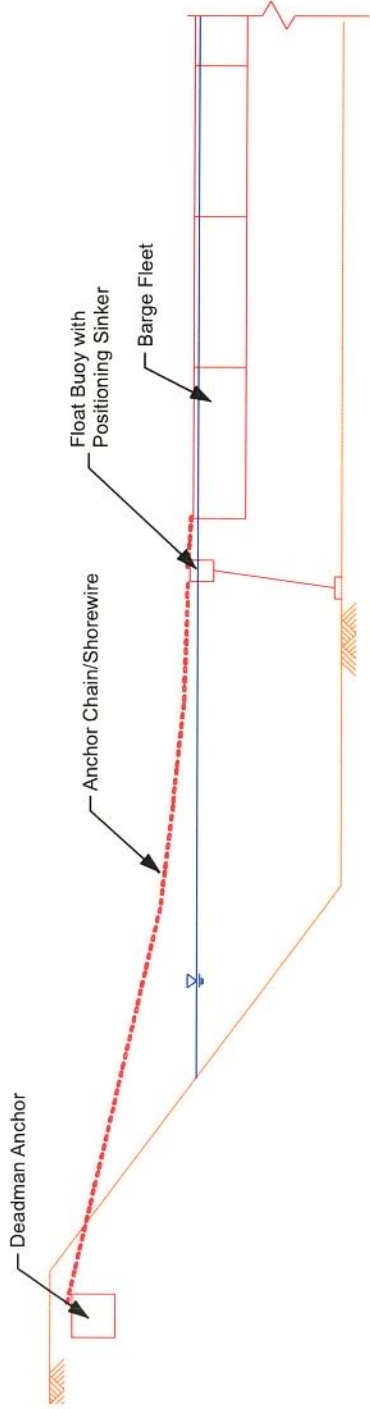
P-2858



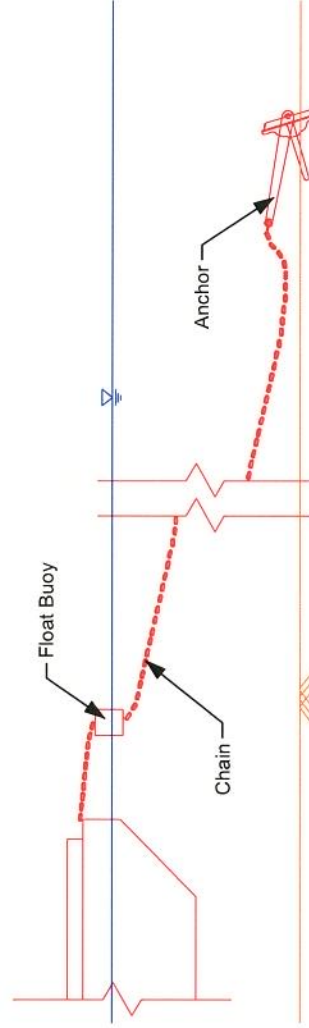
JEFFERSON COUNTY PORT AUTHORITY	
EXHIBIT NO:	
REV. NO: 0	
DATE: 11/11/2013	

PRELIMINARY FLEETING LOCATIONS

P-2858



Elevation View of Landside Mooring System



Elevation View of Upstream Mooring System



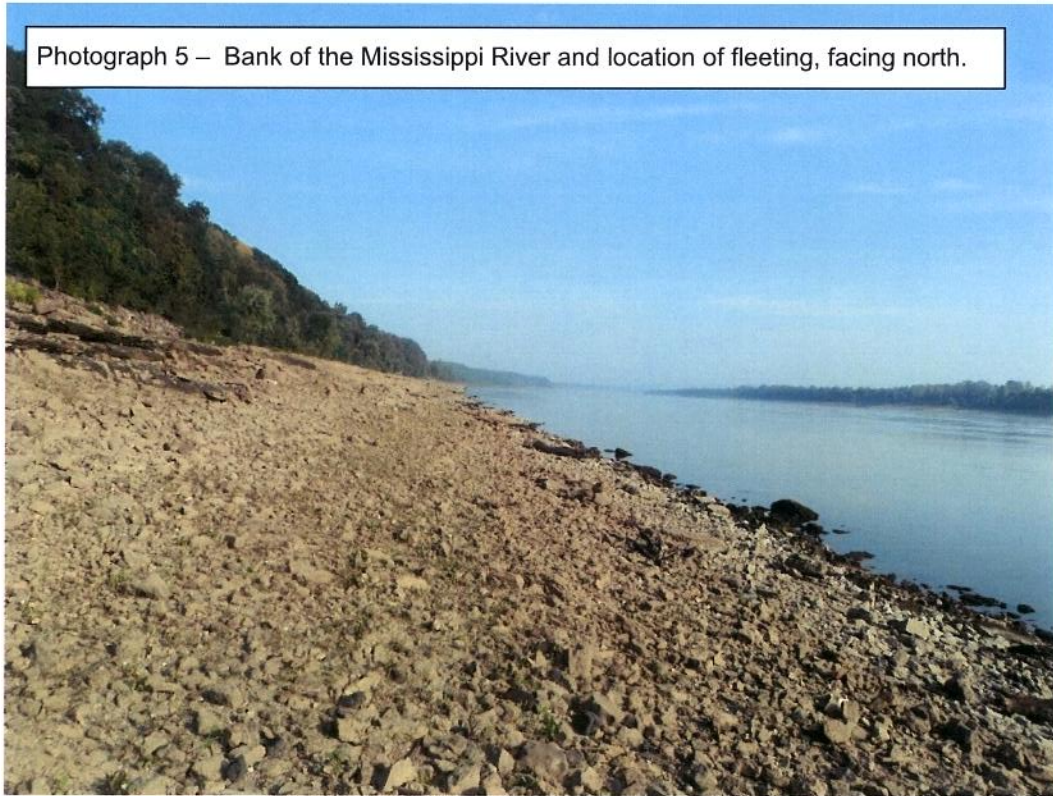
Preliminary: Not to Scale

EXHIBIT NO:	
REV. NO: 0	
DATE: 11/11/2013	

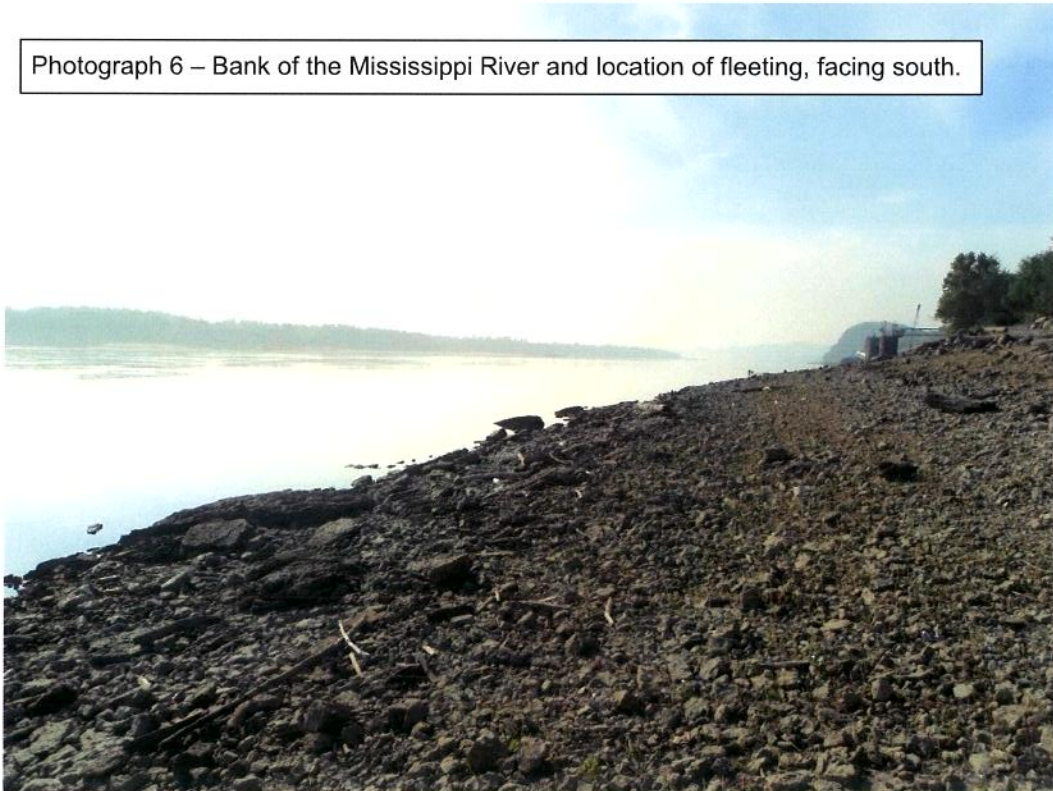
JEFFERSON COUNTY PORT AUTHORITY

PRELIMINARY FLEETING LOCATIONS

Photograph 5 – Bank of the Mississippi River and location of fleeting, facing north.



Photograph 6 – Bank of the Mississippi River and location of fleeting, facing south.



© Copyright Hanson Professional Services Inc. 2013

Source: October 2, 2013 Field Visit



Photographs

Jefferson County Port Authority  
Barge Fleeting Locations  
Jefferson County, Missouri

JOB NO. 12L0069