

## Rend Lake Visitor Center



The Rend Lake Visitor Center is a beautiful facility with much to offer. It includes a large exhibit hall full of interactive exhibits.

Browse through the Exhibit Hall and see live reptiles and fish from the area, find out why Rend Lake was built, and watch the short presentation "People of the Area's past."

The Visitor Center is also home to a working honey bee hive. The bees are able to travel outdoors to the native plant garden where they collect pollen and nectar to take back to the hive.

The garden is home to a variety of pollinators such as birds, butterflies, and bees and is sure to inspire you to plant native species in your own yard.

Call the Visitor Center today at 618-724-2493 to schedule an educational program either at the Visitor Center or at your site. Rangers can customize their programming to meet your needs. We also offer a large multi-purpose room to reserve for your event or meeting.

Like us on Facebook  
at Rend Lake Project Office/Visitor Center



## Rend Lake

For Rend Lake & Area Information:  
www.mvs.usace.army.mil/rend  
e-mail: RendInfo-MVS@usace.army.mil  
www.EnjoyRendLake.com

### Emergency Numbers:

Franklin Co. Sheriff 911 or (618) 438-4841  
Jefferson Co. Sheriff 911 or (618) 244-8004  
Illinois State Police (618) 542-2171

### Rend Lake Offices & Information:

**U.S. Army Corps of Engineers**  
Rend Lake Project Office / Visitor Center  
11981 Rend City Road, Benton, IL 62812  
(618) 724-2493

**Rend Lake Conservancy District** (618) 439-4321

**Illinois Department of Natural Resources**  
Wayne Fitzgerald State Park (618) 629-2320  
Conservation Police - Region V (618) 435-6138  
Rend Lake State Fish & Wildlife (618) 279-3110

### Rend Lake Lodging & Attractions:

Rend Lake Marina (618) 724-7651  
Rend Lake Resort & Conference Center  
(618) 629-2211 or (800) 833-3341  
Seasons Lodge (618) 629-2600 or (800) 999-0977  
Rend Lake Golf Resort (618) 629-2353  
Rend Lake Shooting Complex (618) 629-2368

**For Camping Reservations**  
National Recreation Reservation Service  
(877) 444-6777  
www.Recreation.gov

Rend Lake is accessible  
from Illinois Interstate 57  
Exit 77 - Sesser / Whittington  
Exit 71 Benton  
Exit 83 Ina

DP 1130-2-26-09/10  
Revision: 06/2010



## Southern Illinois Rend Lake

Where the Fun Begins!



US Army Corps  
of Engineers  
St. Louis District

## Trails and Wildlife Viewing

Managed by the U.S. Army Corps of Engineers, Rend Lake offers the outdoor recreationist unlimited opportunities for enjoying wildlife. Over 40,000 acres of water and land provide diverse habitat for a variety of wildlife species. Subimpoundments and levee systems provide wetland habitat for geese, ducks, wading birds and shorebirds, as well as aquatic mammals such as muskrats and beaver. Groups of migrating pelicans and swans, along with nesting bald eagles and osprey may also be seen. The fields and forests of Rend Lake offer other viewing opportunities for outdoor recreationists, sportsmen, and bird watchers. White-tail deer are especially numerous and not unusual to see.

The area is also abundant to more mysterious animals such as fox, coyotes, bobcats, turkey, and song birds. At Wayne Fitzgerald State Park, there is a small, but very watchable population of ring-neck pheasant. The best way to view these magnificent animals is along Rend Lake's trails.

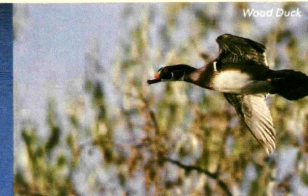
The **Blackberry Nature Trail** is a ¼ mile wood chipped trail that meanders through some of the most diverse and scenic habitat that Southern Illinois has to offer. The trail passes through bottomland hardwoods, prairie grasslands, wetlands and riparian ecosystems. The trail skirts the southern and eastern sides of the lake, traveling within walking distance of all campgrounds and major recreation areas.

The **Blackberry Nature Trail** is a ¼ mile wood chipped trail that meanders through some of the most diverse and scenic habitat that Southern Illinois has to offer. The trail passes through bottomland hardwoods, prairie grasslands, wetlands and riparian ecosystems. The trail skirts the southern and eastern sides of the lake, traveling within walking distance of all campgrounds and major recreation areas.

Get a brochure of Rend Lake's trails and watchable wildlife when you visit the Rend Lake Visitor Center.



Pelicans



Wood Duck



Coyote

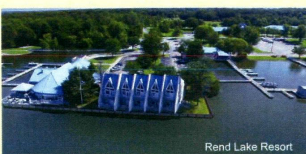
## Recreation

Whether you come to the lake to camp, boat, fish, golf...you name it, Rend Lake has it. The lake is home to nearly 780 campsites either on or near the water offering amenities from water, sewer, and electric to primitive walk-in sites and everything in between. There are also two large group camp areas perfect for reunions or retreats.

The Dale Miller Group Camp, located in South Marcum Campground, includes cabins, private beach, enclosed picnic shelter with fireplace, mini-shower, 9 RV sites with 50 amp electric, ball court and play field, and playground areas. The Shogbark Group Area, located in North Sandusky Campground, includes 21 electric RV sites, group fire ring, volleyball, and restroom facility.

Rend lake also offers several picnic areas, shelters, and group areas for day use gatherings and events. There are picnic tables, grills, and playgrounds at all day use areas. Picnic shelters offer electricity, grills, and scenic vistas and can be reserved for a small fee or free to use on a first come - first serve basis.

The Spillway Group Area offers 10 acres for large, outdoor events. This area is located on the east end of the Rend Lake main dam, which provides for beautiful sunsets. The area includes a large shelter, amphitheater, gazebo, restroom facility, and ample parking. There is also outdoor lighting for events that extend into the evening.



Rend Lake Resort

Rend Lake Resort offers a large conference center with lodging, boats perched over the lake, and cabins. Relax poolside, rent a boat to explore the lake, or enjoy fine dining inside the restaurant or on the deck overlooking the water.



South Sandusky Beach

The South Sandusky Beach offers a large sand area, picnic sites and shelters, perfect for families to enjoy some fun in the sun. The North Marcum Boat-In area also offers a large sand area and picnic sites. At the boat-in area, boats may moor along the entire shoreline to relax and grill. The 27 boat ramps around the lake provide exceptional opportunities for boaters and anglers alike.

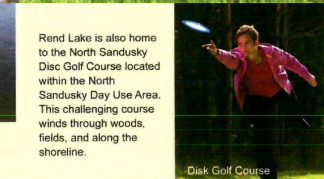
### For the Outdoorsmen

Rend Lake has 40,000 acres of public land and water managed by the U.S. Army Corps of Engineers available for outdoor recreation. There are miles of hiking and biking trails, wildlife viewpoints, horse trails, an abundance of deer, rabbit, squirrel, turkey and waterfowl, making Rend Lake a hunter's paradise.

If you enjoy shooting or need to practice your shot, visit the Rend Lake Shooting Complex located between the Rend Lake Resort and the Rend Lake College. The Complex provides something for everyone with multiple trap, skeet, and 5-stand setups.



The nearly 19,000 acres of water contain excellent populations of crappie, largemouth bass, white bass, bluegill, and catfish. An intensive fisheries management program is augmented with successful fish stocking of 50,000 largemouth bass or hybrid striped bass each year.



Disk Golf Course

Rend Lake is also home to the North Sandusky Disc Golf Course located within the North Sandusky Day Use Area. This challenging course winds through woods, fields, and along the shoreline.



Rend Lake Golf Resort

The Golf Resort and Season's Lodge is a golfer's dream come true. Golf the 27-hole course that was rated as one of the finest public golf courses in the Midwest. Enjoy fine dining in the resort restaurant and conference room, then get a restful sleep in the Seasons Lodge and Fairway Condominiums.

Excellent boating facilities and services are available on and around the lake, including courtesy slips, marine fuel, bait, winter boat storage, boat rentals and sales, and repair services.



Rend Lake Marina

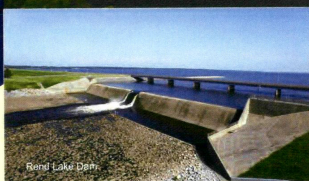
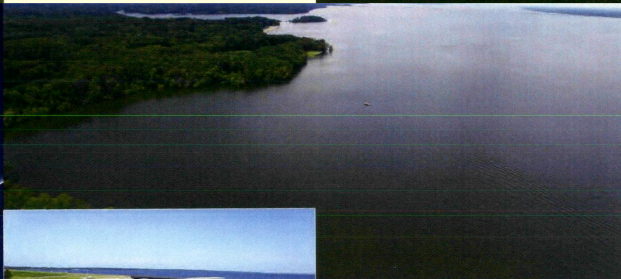
## Southern Illinois Rend Lake

History & Purpose

US Army Corps  
of Engineers  
St. Louis District

Rend Lake was named after William Patrick Rend, a retired Civil War colonel who operated the local coal mine in the 1920's. This coal mine was located approximately ½ mile south of Rend Lake, and from it reared the bustling town of Rend City. Coal mining business eventually came to a halt, forcing miners to move to find work, leaving Rend City a ghost town.

In the early 1960's, a group of concerned local citizens formed the Rend Lake Association to address problems associated with flooding, frequent droughts, and the lack of a reliable source of drinking water in the area. They understood that changes must be made for the betterment of the area. Their efforts were rewarded when Congress authorized the building of Rend Lake with the Flood Control Act of October 23, 1962. The U.S. Army Corps of Engineers accepted responsibility for the construction and management of the \$60-million project. Construction of the 19,000-acre impoundment took only five years to complete and was finished ahead of schedule. The lake reached normal pool on March 12, 1973. The Rend Lake Association would later form the Rend Lake Conservancy District, that continues to serve the public at Rend Lake by providing high quality drinking water to area communities.



Rend Lake Dam

Today, Rend Lake serves as a destination spot for more than 3 million recreating visitors each year, but it serves more of a purpose than just a place to recreate.

The lake provides downstream flood damage reduction, provides water to over 60 communities within 10 surrounding counties, brings in revenue to local businesses and supports area redevelopment, and provides fish and wildlife conservation areas.



### Statistics

<b>Storage, acre-feet</b>	
Water Supply Allocation.....	109,000
Low-Flow Regulation .....	51,000
<b>Water Area, surface acres</b>	
Flood control, top .....	24,000
Normal pool, top .....	18,900
<b>Elevation, feet NGVD*</b>	
Flood control pool, top .....	410.0
Normal pool, top .....	405.0
<b>Depth, feet</b>	
Flood control pool, max .....	40
Normal pool, max .....	35
Average pool .....	8-10
<b>Shoreline, miles (approximate)</b>	
Flood control pool .....	219
Normal pool .....	162
<b>Location of Lake, river mile</b>	
From mouth of river .....	103.7 to 120
Counties .....	Franklin and Jefferson
<b>Lake Record Elevations, feet NGVD*</b>	
Highest .....	413.83 (May 19, 1995)
Lowest .....	403.3 (February 3, 2000)

\*NGVD - In the 1970's the term "Mean Sea Level" was replaced with the term "National Geodetic Vertical Datum"

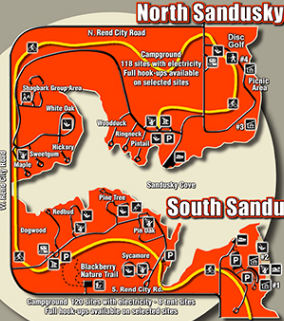




US Army Corps of Engineers  
St. Louis District



Rend Lake  
Bike Trail



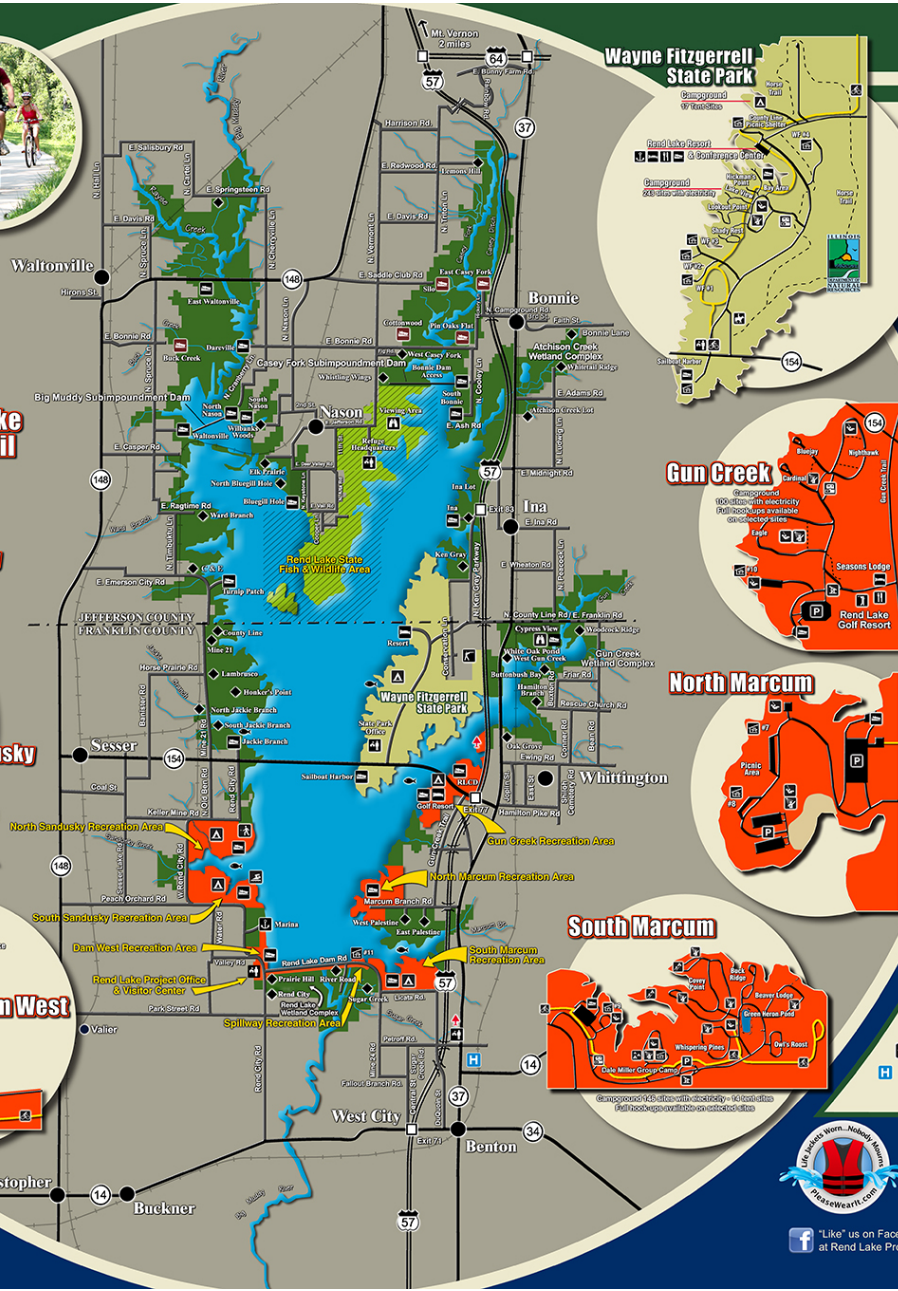
North Sandusky



South Sandusky



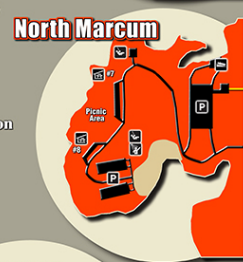
Dam West



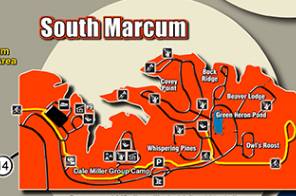
Wayne Fitzgerald  
State Park



Gun Creek



North Marcum



South Marcum

# Rend Lake

Where the Fun Begins!

## Legend

- Public Lands (Open to hunting)
- Corps of Engineers Recreation Areas
- Illinois State Park
- Wildlife Refuge
- Interstate Highway
- Primary Highway
- Secondary Road
- Interstate Exit
- Illinois Welcome Center
- Ranger Station
- Boat Launch Ramp
- Hunter-Fisherman Parking with Seasonal Boat Ramp Access
- Hunter-Fisherman Parking
- Campgrounds
- Campgrounds Fee Booth
- Walk-in Tent Camping
- Group Camping
- Sanitary Dump Station
- Bath House
- Playground
- Picnic Shelter
- Beach
- Interpretive Trail
- Bicycle Trail
- Watchable Wildlife Viewing Platform
- Fish Attractor
- Marina
- Resort
- Food
- Golf
- Rend Lake Shooting Complex
- Disc Golf Course
- Hospital

## Standard Lake Markers

- Red Flag with White Diagonal: DIVER-KEEP CLEAR 50 YARDS
- Diamond: DANGER
- Circle: CONTROLLED AREA (Explanation within Circle)
- Diamond with Cross: BOATS KEEP OUT
- Square or Rectangle: GIVES INFORMATION (Explanation within Square)
- Orange Buoy with Red: RESTRICTED AREA



Your safety  
is our concern!

"Like" us on Facebook  
at Rend Lake Project Office/Visitor Center