

WELCOME

Clarence Cannon Dam and Mark Twain Lake is a Corps of Engineers civil works project developed for the purposes of flood risk management, hydro-electric power, fish and wildlife conservation, recreation, and water supply. Approximately 55,000 acres of land and water are available for public use during the Missouri hunting seasons. A multitude of habitats are available for outdoor enthusiasts to experience, including oak/hickory forests, warm season grasslands, diverse old field management units, and wetlands. Upland game species available for hunting include: whitetail deer, eastern wild turkey, squirrels, quail, rabbit, and doves. In addition, various waterfowl species utilize the lake and managed wetlands during their annual migrations. Note that a waterfowl refuge has been designated on the Elk Fork and Middle Fork branches of the lake, and provides an undisturbed area for waterfowl to rest and feed. No hunting and boat traffic is permitted in the refuge during the migratory waterfowl hunting season. The Corps of Engineers Environment Stewardship Program manages the natural resources to provide optimum wildlife habitat in balance with a diversity of recreational activities. This guide provides a general view of the wildlife habitat management activities that occur on the lands of Mark Twain Lake.



Rules and Regulations

CAMPING. Camping is available in the Ray Behrens and Indian Creek Recreation Areas during the hunting seasons. Primitive camping is available in various locations around the lake, but is closed during the Missouri Firearms Deer Season.

OFF-ROAD VEHICLE USE. All vehicles must be operated on public roadways. ATVs are not permitted on the public lands of Mark Twain Lake.

HUNTING STANDS AND BLINDS. Portable deer stands and blinds are permitted, but must be removed each day after the hunt. No permanent stands or blinds may be constructed.

NO HUNTING ZONES. Most public lands at Mark Twain Lake are available for hunting with the following exceptions:

Developed Recreation Areas. Campgrounds and boat ramp areas are posted with no hunting signs on their perimeter. Reference Mark Twain Lake's Visitor Map for general locations

Mark Twain Lake Waterfowl Refuge. This area is closed to waterfowl hunting and boat traffic from the last week of October till the end of December. Upland game hunting is permitted on lands within the designated zone.



Resource and Wildlife Management

In an effort to provide optimum wildlife habitat and quality outdoor experiences at Mark Twain Lake, land managers implement various management practices to insure the needs of wildlife are available—Food, Water, Cover, and Space. Management activities focus on providing optimum habitat components to insure a sustainable and healthy wildlife population. Management activities include:

Management of vegetation to create native food sources, and the planting of food plots.

Management of warm season grasslands and upland old field habitats through mowing, disking, and prescribed burning to provide nesting, shelter, and foraging habitat.

Reforestation and limited timber stand improvements to provide diversity of forest structure.



These management practices are a broad view of the numerous activities that are implemented to insure quality hunting and other outdoor pursuits enjoyed at Mark Twain Lake

Lake Address

Mark Twain Lake Project Office
20642 Highway J
Monroe City, Missouri 63456
573-735-4097
www.mvs.usace.army.mil/Missions/Recreation/MarkTwainLake

Emergency Telephone Numbers

Mark Twain Lake—573-735-4097

Ralls County Sheriff
Emergency—911
Non Emergency—573-985-5611

Monroe County Sheriff
Emergency—911
Non Emergency—660-327-5175



Hunting and Firearm Safety and Sportsmanship

For a safe and enjoyable visit, please keep in mind the necessary skills and responsibilities that are required of every hunter.



Review all the hunting rules and regulations prior to your hunt. The Missouri Department of Conservation Hunting Regulations are applicable on the lands of Mark Twain Lake.

Respect the rights of adjacent private land owners. The boundary line of Mark Twain Lake is marked with signs and blue paint. Know where the boundary is.

Always keep the muzzle of your gun pointed in a safe direction.

Treat all firearms as if they are loaded. Unload firearm when travelling on difficult terrain.

Be sure of your target and beyond the target before you pull the trigger.

Respect fellow hunters and visitors.

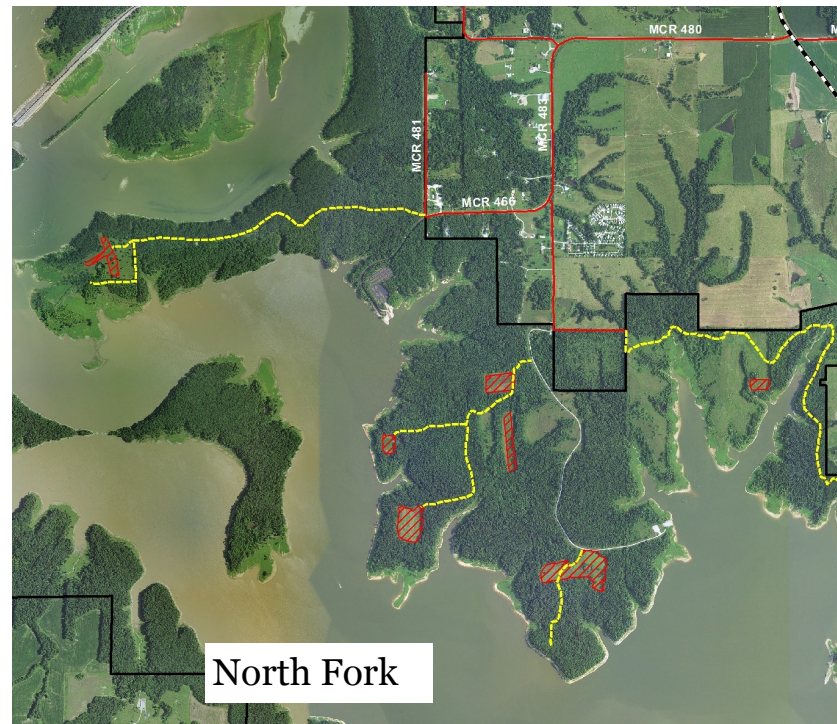
Clarence Cannon Dam and Mark Twain Lake

2015 Hunting Guide And Food Plot Map

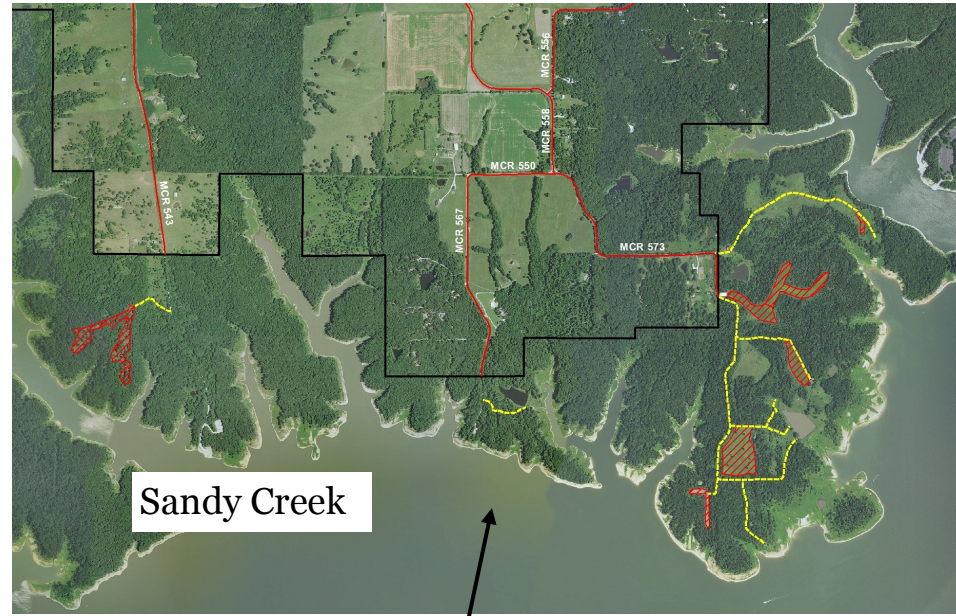


US Army Corps
of Engineers®
St Louis District




2015 Food Plot and Habitat Management

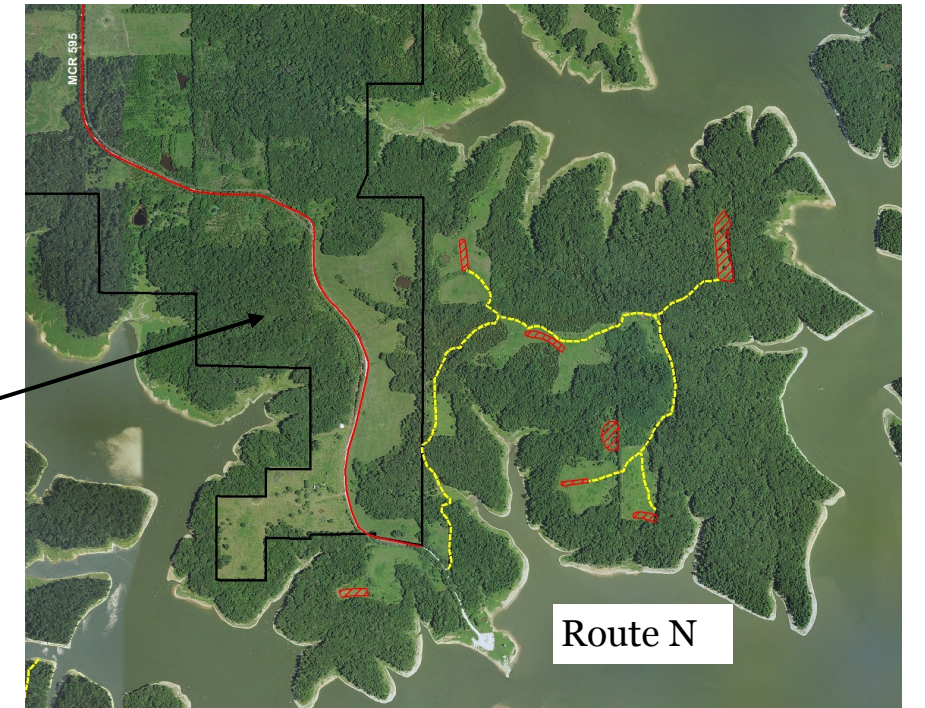


North Fork

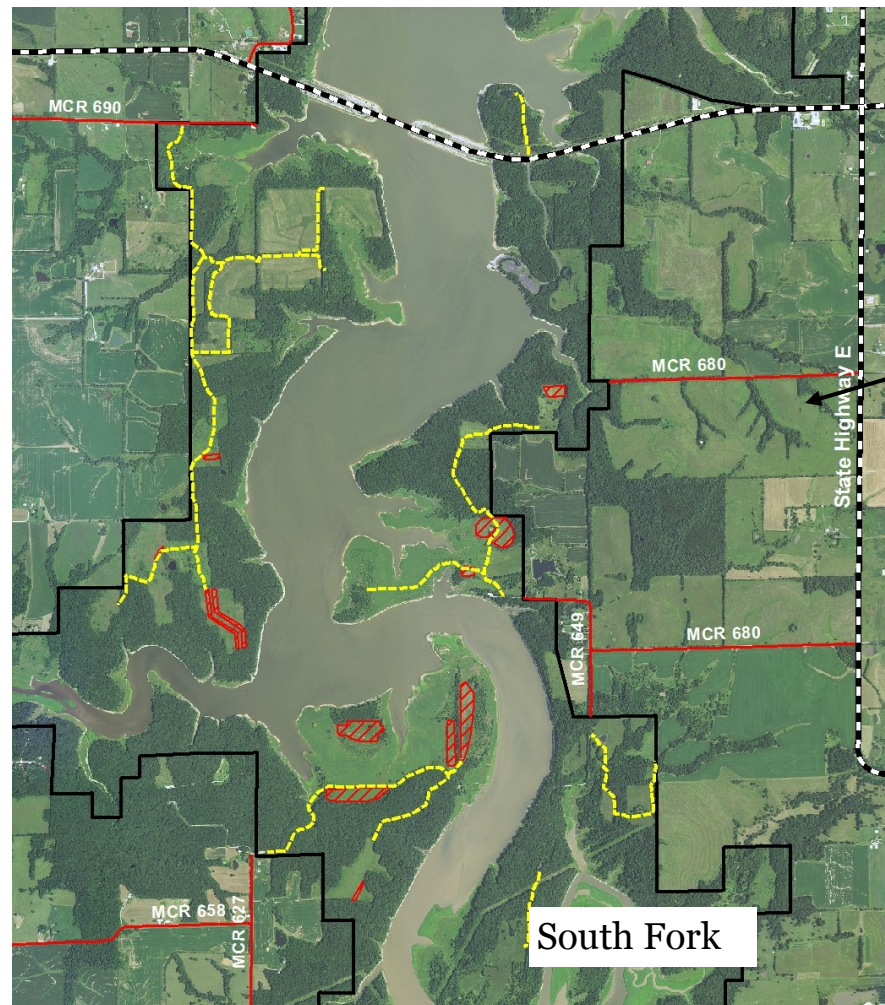


Sandy Creek

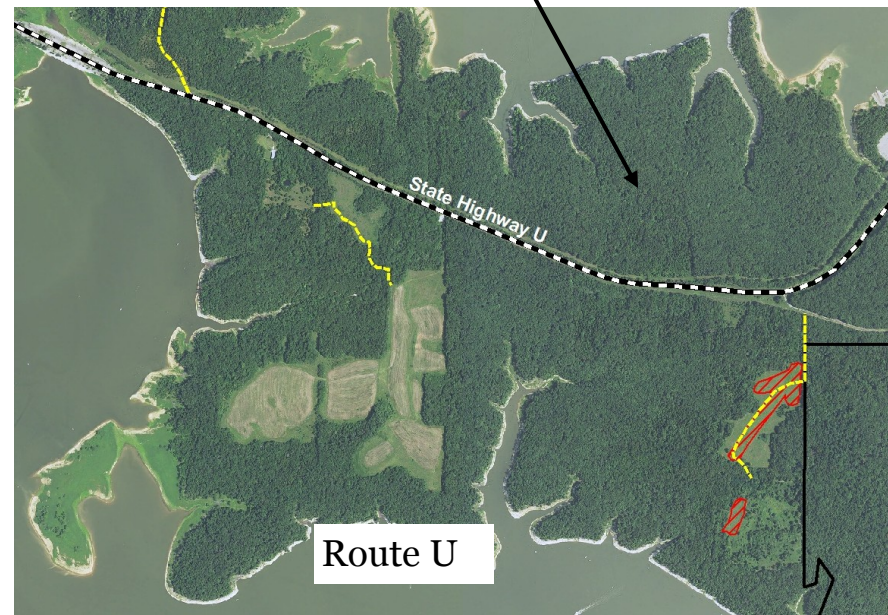
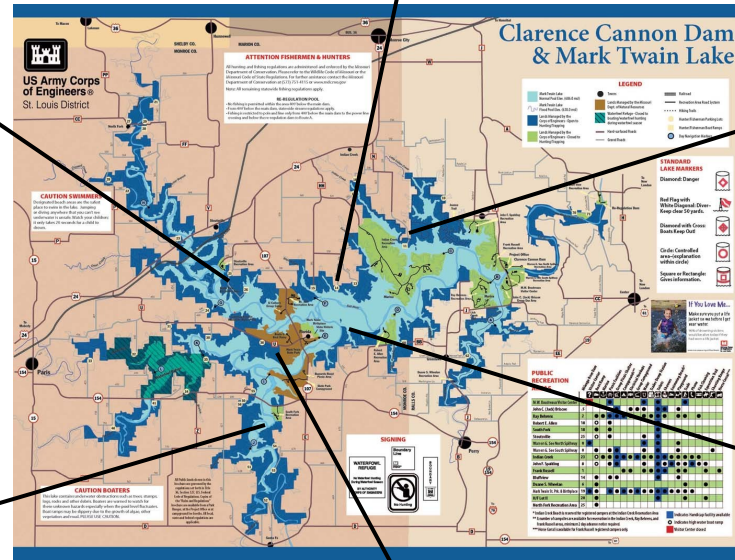
-  Fields planted in a food plot, or have been disked to manage native food sources.
-  Field access roads—Roads have been mowed.
-  Corps Boundary Line



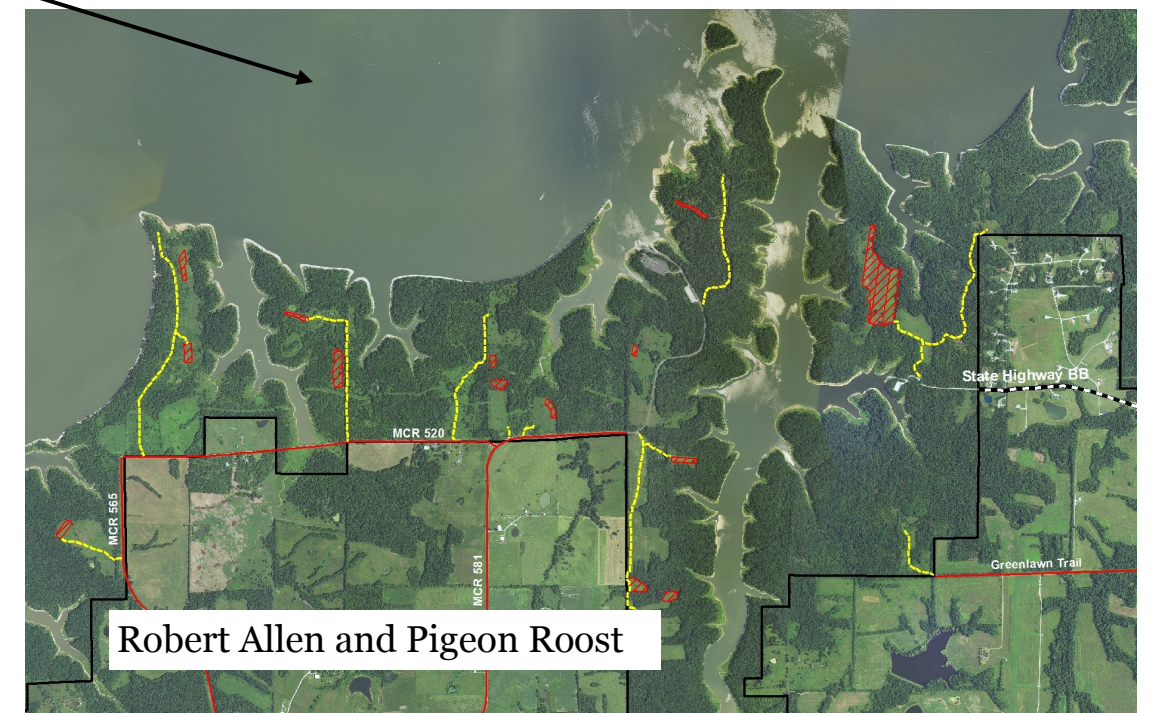
Route N



South Fork



Route U



Robert Allen and Pigeon Roost