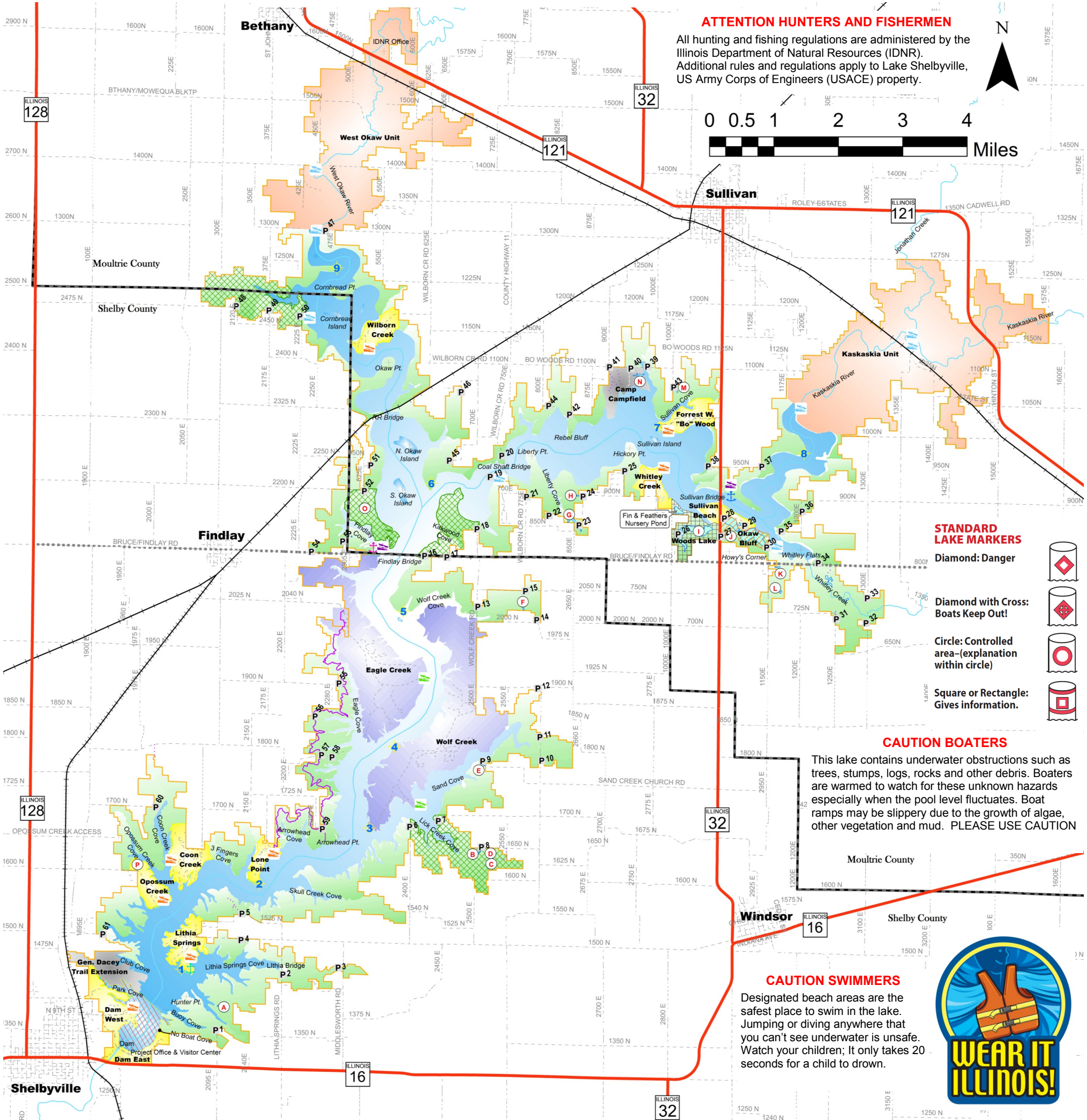


LAKE SHELBYVILLE



US Army Corps of Engineers

Hunting and Fishing Map



ATTENTION HUNTERS AND FISHERMEN

All hunting and fishing regulations are administered by the Illinois Department of Natural Resources (IDNR). Additional rules and regulations apply to Lake Shelbyville, US Army Corps of Engineers (USACE) property.



STANDARD LAKE MARKERS

- Diamond: Danger
- Diamond with Cross: Boats Keep Out!
- Circle: Controlled area-(explanation within circle)
- Square or Rectangle: Gives information.

CAUTION BOATERS

This lake contains underwater obstructions such as trees, stumps, logs, rocks and other debris. Boaters are warned to watch for these unknown hazards especially when the pool level fluctuates. Boat ramps may be slippery due to the growth of algae, other vegetation and mud. PLEASE USE CAUTION

CAUTION SWIMMERS

Designated beach areas are the safest place to swim in the lake. Jumping or diving anywhere that you can't see underwater is unsafe. Watch your children; it only takes 20 seconds for a child to drown.



Legend P Hunter & Fisherman Parking Lots USACE Boat Ramp State Boat Ramp Primitive Boat Ramp Marina Boat Ramp Sullivan Marina Lithia Springs Marina Findlay Marina Normal Summer Pool (El. 599.7)		Boundary Signs Railroad Moutrie Roads Shelby Roads Shelby/Moutrie County Line USACE Property Boundary Restricted Area_Waterfowl Hunting Only No Waterfowl Hunting Zone No Firearm Hunting or Trapping No Hunting Boundary		Fishing Ponds A. Hunter Lake B. Stone Pond C. South Shield Pond D. North Shield Pond E. Sand Pond F. Wolf Pond G. Beaver Lake H. Mary's Lake I. Woods Lake J. Hidden Pond K. Bruce Pond L. Bragg Pond M. McClure Pond N. Camfield Pond O. North Findlay Pond P. Opossum Pond		Hunter and Fisherman Parking Lots 1. Hunter Lake Access 2. Lithia Bridge Parking 3. Old Lithia Springs Parking 4. Compartment 5 5. Compartment 7 6. Woodard Road 7. Sand Creek Road 8. Gun Club Road 9. South Sand Creek Road 10. South Sand Creek Bridge 11. North Sand Creek 12. Gravel Pit 13. Wolf Creek Bridge 14. Ree's Ridge 15. Wolf Road 16. Findlay Bridge 17. Kirkwood Access 18. Houser 19. Coal Shaft South 20. Coal Shaft North		21. Liberty Access 22. Liberty Cemetery 23. Beaver Lake 24. Beaver Lake North 25. South Shores 26. Woods Lake West 27. Woods Lake East 28. Okaw Bluff West 29. Okaw Bluff East 30. Bruce West 31. Hugh's Ridge 32. South Crooked Bridge 33. North Crooked Bridge 34. Whitley Creek 35. Bruce East 36. Bruce East 2 37. East Slaughterhouse 38. West Slaughterhouse 39. Camp Camfield Bridge 40. Camp Campfield Multi-Use Area		41. Camp Campfield West 42. Toad Road 43. McClure Pond 44. Turkey Lane 45. Kirksville Access 46. Ken Kenny's 47. Depot Road (Sullivan Access) 48. Ivan's Bean Field 49. South Wilborn Bridge Parking 50. Johnson's Bluff 51. Wright Cemetery 52. North Findlay Access 53. South Findlay Access 54. Findlay West 55. Eagle Creek Cove Road 56. Yantis Road (4A Gate) 57. Mahoney Road (Lot 1) 58. Mahoney Road (Lot 2) 59. Arrowhead Campground 60. Busy Bee Road 61. Deer Trail (Country Club Gate)	
--	--	---	--	---	--	--	--	--	--	---	--

Special Notes:
 - SEE BACK OF MAP FOR HUNTING & FISHING REGULATIONS
 - No hunting is permitted in recreation areas
 Exceptions:
 - Whitley Creek Recreation Area is open to archery hunting for people with physical disabilities BY PERMIT ONLY
 - Annual Youth Deer Hunt and Hunt for People with Disabilities

BOUNDARY LINE

No Hunting

WILDLIFE REFUGE
 CLOSED TO ENTRY
 NO HUNTING
 OR TRESPASSING
 ILLINOIS DEPARTMENT OF
 NATURAL RESOURCES

WILDLIFE MANAGEMENT AREA
 STATE OF ILLINOIS
 DEPARTMENT OF NATURAL RESOURCES
 PUBLIC USE REGULATED BY
 ADMINISTRATIVE ORDER
 IN COOPERATION WITH
 U.S. ARMY CORPS OF ENGINEERS

Lake Shelbyville, US Army Corps of Engineers Rules and Regulations

General Hunting Regulations and Rules

- It is unlawful to possess or consume alcoholic beverages while hunting.
- It is unlawful to operate any type of vehicle off designated roadways.
- No hunting is allowed within 100 yards of an inhabited structure without permission from the owner.
- No hunting is allowed within 200 yards of a recreation area (areas are well signed and painted yellow at the 200 yard mark).
- Permission must be obtained from adjacent landowners prior to crossing private property to access Corps of Engineers property.
- No hunting or trapping in designated recreation area (campgrounds, boat ramps, day use areas, beaches).
- Hunters must follow all State and Federal laws.
- Fishermen must maintain a minimum of 200 yards distance from any waterfowl hunters on the lake.

Okaw Bluff Wetland Area is closed September 1st through January 31st to everyone except waterfowl hunters with a valid special use permit.

Tree Stand and Blind Policy

- Any deer hunter utilizing a deerstand or groundblind must have their stand/blind tagged with one of the following permits:
- A Roving Permit: This permit allows you to place one Roving tree stand on US Army Corps of Engineers managed lands at Lake Shelbyville, IL, for a period not to exceed a break in use greater than 72 hours. Two roving permits allowed per hunter.
- A Seasonal Permit: This permit allows you to place one Seasonal tree stand per licensed hunter on US Army Corps of Engineers managed lands at Lake Shelbyville, IL, 2-weeks prior to and 2-weeks after deer season. One seasonal permit allowed per licensed hunter at a cost of \$30.00/season.
- **Note: These permits do not give you private exclusive use of ANY portion of Lake Shelbyville.**
- No screw-in steps, nails, bolts, railroad spikes, bow/gun hangers, or anything else that pierces the bark of the tree may be used.
- Seasonal Permits may be obtained at the Lake Shelbyville Project Office and Coon Creek, Lithia Springs or Bo Woods campgrounds during normal hours of operation beginning July 15 each year. The hunter MUST present a valid hunting license to obtain one.
- Roving Permits may be obtained at the Lake Shelbyville Project Office, Ace Hardware in Sullivan, IL, Howy's Lakeside gas station at Bruce -Findlay Road and Highway 32 or Buck Stop Archery in Shelbyville.

Areas Closed to Hunting or Limited Hunting Access

- Waterfowl hunters may not hunt south of a straight line drawn from the north side of 9th Street Cove to the north side of Buoy Cove (see map).
- Whitley Creek is open to physically challenged deer hunters who have first received a permit through the USACE office and have made reservations for one of the four blinds (Archery Season, 2nd Shotgun and Muzzleloader; must possess a valid Lake Shelbyville Project Moultrie gun tag to be eligible).
- Woods Lake is open to Archery only, regardless of species hunted.
- Okaw Bluff Recreation Area is open to waterfowl hunting only.
- Sullivan Beach and Wilborn Creek beach areas are open to waterfowl hunting during EARLY goose season starting the day after the beaches close in September. It is the HUNTERS responsibility to check close dates in the Park Information Guide published each year for closing dates.
- During REGULAR waterfowl season any recreation area, or portion thereof that is closed for the season, CAN be hunted as long as the hunter(s) keep water between their boat and the shoreline. It is the HUNTERS responsibility to check close dates in the Park Information Guide published each year for closing dates. Camp Camfield and the area between Park Cove and Club Cove (see map) are considered a multi-use area meaning trail walkers, hikers, bird watcher's and hunters can all utilize this area. Hunters should use extra caution while hunting this area.

Cultural Resources

- Cultural Resources on federal lands are protected under the Archaeological Resource Protection Act of 1979 (ARPA.) This includes not only digging for artifacts such as arrowheads and pottery but surface hunting as well.
- Metal detectors can only be utilized on designated swim beaches on Lake Shelbyville.

Collection of Plants

- Ginseng hunting is ILLEGAL on Corps of Engineers managed lands as well as State managed lands.
- Mushroom hunting is permitted on Corps of Engineers managed lands and after 1:00 p.m. on State managed lands during spring turkey season.
- Collecting plants to include prairie and wildflower seed is illegal.

Dog Training Areas – See map for all 4 locations.

Dog training is restricted to four locations on Lake Shelbyville from April 1 - July 31 every year due to nesting season. The four training areas are:

1. Cornbread Bottoms (South of Bethany) 514 acres; Open to all dog training.
2. Pogue Timber (NE of Findlay) 204 acres; Raccoon dog training only.
3. Houser (NE of the Findlay Bridge) 265 acres; Open to all dog training.
4. Windsor Gun Club (NW of Windsor) 517 acres; Open to all dog training.

Firewood

- It is illegal to gather/cut firewood on Corps of Engineers managed lands without a Special Use Permit. Typically, these permits are not granted unless a tree is down on a roadway, etc.
- Much of Illinois is under quarantine for the Emerald Ash Borer – an exotic beetle that kills ash trees. Campers are strongly encouraged to buy firewood locally to burn in campgrounds and are prohibited from bringing firewood from any quarantined counties.
- Dead and downed wood may be gathered inside of a designated recreation area for the purpose of burning it at a campsite.

Furbearer/ Trapping

- Statewide regulations.
- No trapping in any campgrounds or other recreation areas duly marked without a special use permit issued from the Lake Shelbyville project office.

Illinois Department of Natural Resources - State Managed Land

- **NOTE:** State managed lands have different rules and regulation then USACE managed lands. For hunting or trapping info in these areas you must contact IDNR or check the Hunting/Trapping or Waterfowl Digest for statewide regulations and site-specific rules.
- IDNR Eagle Creek State Park (217) 756-8260
- IDNR Wolf Creek State Park (217) 459-2831

Coyote

- Statewide regulations.
- ANY legal caliber may be utilized on USACE managed lands.
- IDNR managed lands is limited to .22 rimfire.

Crow Hunting

- Statewide regulations.

Deer Hunting (Archery)

- Statewide regulations
- If hunting from a stand or blind you MUST obtain a Roving or Seasonal permit.

Deer Hunting (Firearms)

- Statewide regulations
- Lake Shelbyville is considered a special hunt area for firearms deer hunting.
- Firearm deer hunters MUST have in their possession a Lake Shelbyville Project Moultrie County or Lake Shelbyville Project Shelby County permit issued through the Illinois Department of Natural Resources (IDNR).
- A general Moultrie or Shelby County permit is **NOT** valid on Lake Shelbyville – *this is a very common violation on Project Lands.*
- If hunting from a stand or blind you must obtain a Roving or Seasonal permit prior to hunting.

Dove Hunting

- Statewide regulations.
- USACE will conduct a controlled dove hunt on opening day of dove season, September 1st, at one or more pre-determined fields.
- On September 1st, two controlled hunts will be conducted. The first will take place in the morning from (6 a.m. - 11 a.m. and one in the afternoon from 2 p.m. - 7 p.m. A permit is required to participate in the hunts on opening day. Permit applications can be picked up at the Lake Shelbyville Project Office Monday through Friday 8 a.m. until 4 p.m., or obtained online at: <http://www.mvs.usace.army.mil/Missions/Recreation/LakeShelbyville/Recreation/WildlifeViewing.aspx>
- Youth hunting is encouraged as dove hunting is a great way to recruit youth hunters. Preference for hunters bringing a youth will be given during the draw. This means that youths will draw for available permits first and adults will draw for any remaining permits.
- After September 1st the fields become first come-first serve. Hunters must hunt at staked blind locations.
- Hunters must remove spent shells and other trash before leaving field.

Groundhog

- Statewide regulations.

Squirrel Hunting

- Statewide regulations.

Turkey (Spring)

- Statewide regulations.
- Lake Shelbyville is considered a special hunt area for spring turkey hunting.
- Spring turkey hunters must obtain a Lake Shelbyville Project-Moultrie County or Lake Shelbyville Project-Shelby County permit through the IDNR draw.
- A Lake Shelbyville Project Moultrie County permit allows the hunter to hunt USACE managed lands AND the Shelbyville Fish and Wildlife Management Areas.
- A general Moultrie or Shelby County permit is NOT valid on Lake Shelbyville.

Turkey (Fall Archery)

- Statewide regulations.
- If hunting from a stand or blind you must obtain a Roving or Seasonal permit.

Turkey (Fall Firearms)

- No fall turkey firearm season is allowed on Lake Shelbyville Project Lands to include the state run Shelbyville Fish and Wildlife Management Area.

Upland (Rabbit, Quail, Pheasant, etc.)

- Statewide regulations.

Waterfowl

- Statewide regulations.
 - Shooting hours are one half hour before sunrise until sunset (outside of IDNR managed land and Okaw Bluff Wetland Area).
 - Waterfowl hunters may not hunt south of a straight line drawn from the north side of 9th Street Cove to the south side of Buoy Cove (see map).
 - Okaw Bluff Wetland hunting is by permit only for the regular waterfowl season. Permits are first come-first serve and hunters may call (217) 774-3951 Ex-7019 on October 1st from 8:30 a.m.-12:00 p.m. On October 1st, hunting parties may only reserve one open date. After October 1st hunting parties may reserve as many dates as they want at that time.
 - Okaw Bluff Wetland hunting permits are good for two consecutive days and are \$30.00 for each blind.
 - Okaw Bluff Wetland odd numbered blinds are hunted Tuesday-Wednesday and even numbered blinds are hunted Saturday and Sunday. This is subject to change from year to year, please contact USACE office to check which blinds will be hunted on which days.
 - Okaw Bluff Wetland Area is closed to all activity Monday, Thursday and Friday during the regular waterfowl season to allow the area to rest.
 - All hunting in Okaw Bluff Wetland is from designated blinds only, a maximum of two hunters per blind is allowed except for blind number 10 which can hold up to four hunters.
 - All hunters must obtain a permit from the project office before hunting and must report their harvest back to the project office after their hunt.
 - Okaw Bluff Wetland is open first come-first serve 7 days a week for Early Goose and Teal seasons as well as the Conservation Snow Goose season.
 - Shooting hours in Okaw Bluff during the regular waterfowl season is ½ hour before sunrise to 1 p.m. and all waterfowl hunters must be out of the Okaw Bluff Wetland Area by 2:30 p.m.
 - Shooting hours for Early Canada Goose and Teal season are statewide regulations.
 - Shooting hours for the Conservation Snow Goose season are statewide regulations.
 - Waterfowl hunters must maintain 200 yards between other waterfowl hunters.
- ## Woodcock, Snipe & Rail
- Statewide Regulations.



**US Army Corps
of Engineers®**
St. Louis District

USACE Lake Shelbyville Project Office
Phone: (217)774-3951 Address: 1989 St. Hwy 16 Shelbyville, IL 62565
24 Hour Lake Information Recording: (217)774-2020
In Case of Emergency Call 911

Report Non-Emergency Maintenance Items: (217)774-3951 X5
Environmental Stewardship (Hunting and Fishing) Inquiries: (217)774-3951 X4
Website: www.tinyURL.com/LakeShelbyville
Facebook: www.facebook.com/LakeShelbyvilleUSACE