

LEGEND

- FEDERAL GOVERNMENT OWNED PROPERTY
- ALL WEATHER ROAD
- ACCESS SITES (IR-2P)
- ▲ BOAT ACCESS SITES
- △ PROPOSED BOAT ACCESS SITES
- ✦ MARINA
- ⊠ RESORT/LODGE
- ⊙ EROSION LAND ACQUISITION SITES
- (II) COUNTY ROADS
- 0-1 GENERAL PURPOSE WATERS
- LF/HI LIMITED USE WATERS-FISHING/HUNTING LEVELS

LAND USE CLASSIFICATIONS

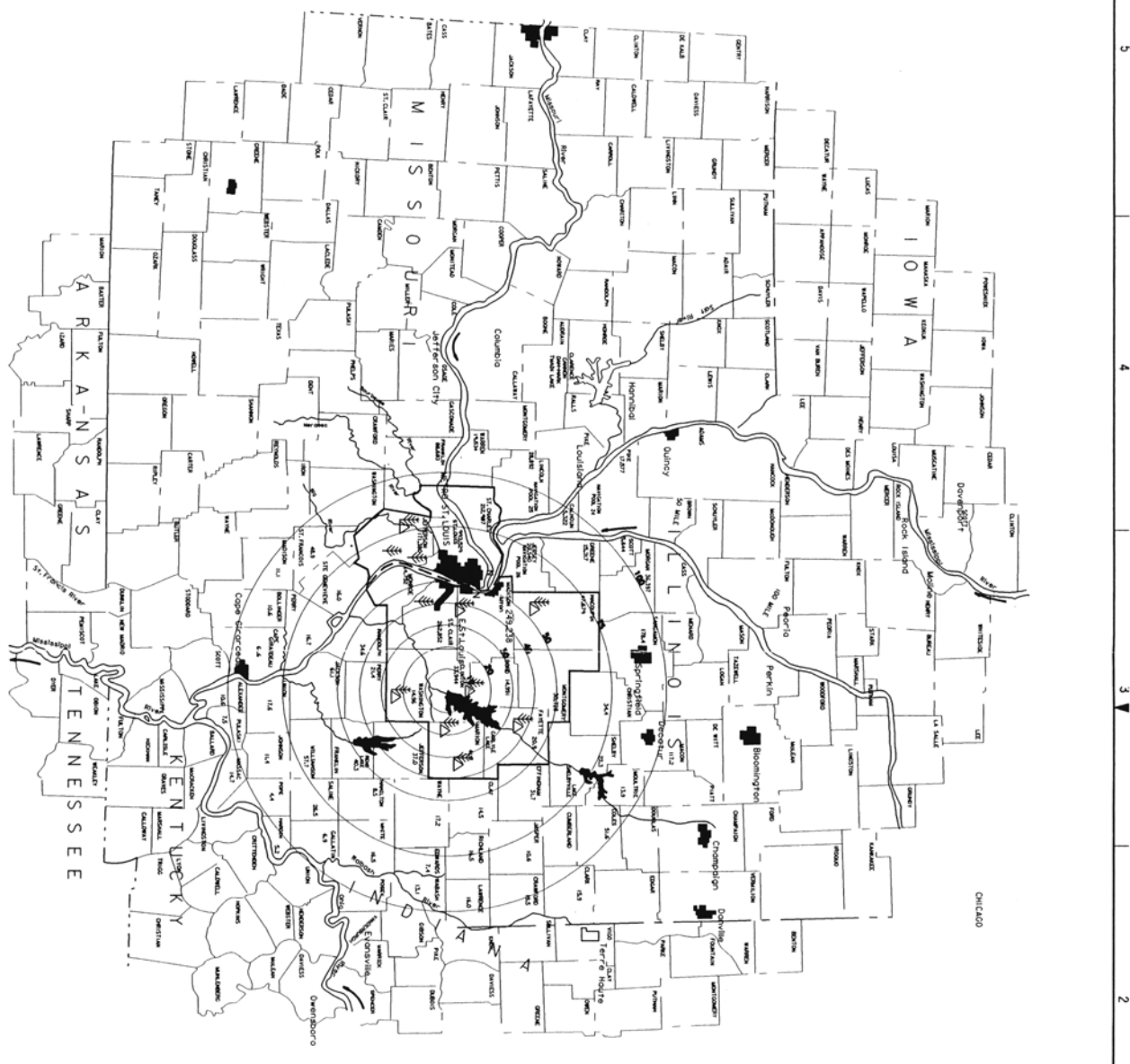
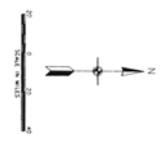
- PROJECT OPERATION
- RECREATION
- MULTIPLE RESOURCE MANAGEMENT
 - WILDLIFE MANAGEMENT-GENERAL
 - VEGETATIVE MANAGEMENT
 - RECREATION - LOW DENSITY
 - FUTURE RECREATION
- ENVIRONMENTALLY SENSITIVE AREAS
 - ECOLOGICAL
 - CULTURAL

LAND USE CLASSIFICATIONS ACRES

PROJECT OPERATIONS	590
RECREATION	3,279
MULTIPLE RESOURCE MGMT	
RECREATION LOW DENSITY	1,510
WILDLIFE MGMT GENERAL (LAND/WATER)	8,188
VEGETATIVE MGMT	1,791
ENVIRONMENTAL SENSITIVE AREA	2
TOTAL LAND ACRES	12,833
TOTAL WATER ACRES	24,710
TOTAL PROJECT	37,543

SYMBOL	REVISIONS	DATE	APPROVED

KENNETH BOB AND ASSOCIATES, INC. 201.666.4100 314.520.0151 314.520.0151	U.S. ARMY ENGINEER DISTRICT CORPS OF ENGINEERS ST. LOUIS, MISSOURI
DESIGNED BY F. WALTON	KASKASKIA RIVER, ILLINOIS
CHECKED BY J. SANDERS	REVISED MASTER PLAN LAND AND WATER USE PLAN
REVISIONS BY F. WALTON	SCALE 1"=5000' DATE 10-18-1996
APPROVED BY [Signature]	DRAWN BY J. SANDERS CHECKED BY J. SANDERS REVISIONS BY F. WALTON
SHEET 2 OF 17	CLP281.DGN PLATE 2



INDIANAPOLIS

- STATE PARK WITH CAMPING
- STATE PARK
- ILLINOIS ST. PARKS - COUNTY
 - FRANK HOLTEN - ST. CLAIR
 - MARIONETTE CO.
 - STEPHEN LAMAR FORBES
 - HORSESHOE LAKE - MADISON CO.
 - BEAVER DAM ST. PARK - MACOMPAN CO.
 - WASHINGTON CO. CONSERVATION AREA - WASHINGTON CO.
- MISSOURI STATE PARKS
 - CASTLEWOOD ST. PARK - ST. LOUIS CO.
 - BAILEY MEMORIAL S.P. - ST. LOUIS CO.
 - WASHINGTON ST. PARK - JEFFERSON CO.
 - M - CORPS LOCK AND DAM
 - MELPRIE - ST. CHARLES CO.
 - L B O Z - MADISON
 - MARKET AREA DELINEATION

METROPOLITAN POPULATION TOTAL TO NEAREST THOUSAND
 111 COUNTY POPULATIONS TO THE NEAREST THOUSAND
 (ZONE OF INFLUENCE ONLY, 1980 CENSUS)

STUDIOS	REVISIONS	DATE	APPROVED
MERRITT BIRD and ASSOCIATES, INC. 1000 PULASKI AVENUE ST. LOUIS, MISSOURI 63102 DESIGNED BY: F. WILSON DRAWN BY: J. SANDERS CHECKED BY: F. WILSON REVIEWED BY: F. WILSON	U.S. ARMY ENGINEER DISTRICT CORPS OF ENGINEERS ST. LOUIS, MISSOURI CARLITE LAKE KEOKUKA RIVER, ILLINOIS REVISED MASTER PLAN POP DENSITY MAP AND ZONE OF INFLUENCE		C. P. BROWN PLATE 3 OF 17 SHEET 3 OF 17

SCALE: 1" = 20 MILES
 DATE: 10-18-1996
 APPROVED BY: [Signature]

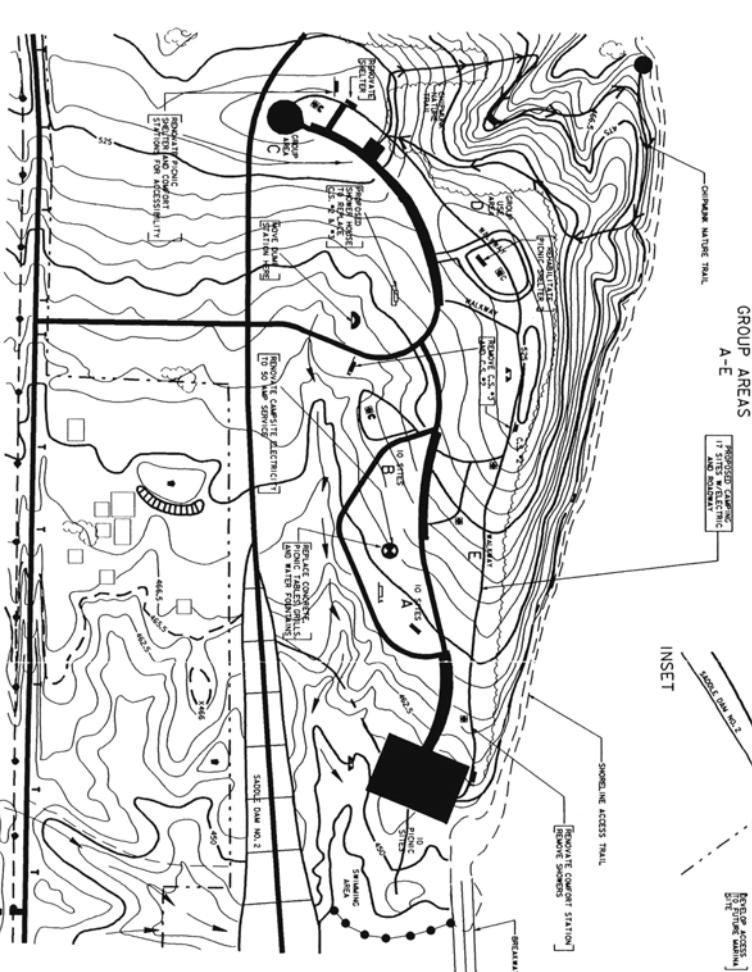
LEGEND

- PROJECT BOUNDARY
- WOODS LINE
- JOINT USE P.O.C. - ELEVATION 445.0
- CONCESSION BOUNDARY

EXISTING	PROPOSED	FEATURE
(Symbol)	(Symbol)	ROADS, PARKING, & CAMPING PADS (GRAVEL)
(Symbol)	(Symbol)	ROADS, PARKING, & CAMPING PADS (GRAVEL)
(Symbol)	(Symbol)	NATURE, INTERPRETIVE, HIKING, CAR BIKE TRAILS
(Symbol)	(Symbol)	COMFORT STATION (WATER BORN)
(Symbol)	(Symbol)	COMFORT STATION (WALK)
(Symbol)	(Symbol)	COMFORT STATION (SHOWER)
(Symbol)	(Symbol)	WASH HOUSE
(Symbol)	(Symbol)	BATHHOUSE
(Symbol)	(Symbol)	GROUP PICOIC SHELTER
(Symbol)	(Symbol)	PICOIC SHELTER
(Symbol)	(Symbol)	PICOIC SITE
(Symbol)	(Symbol)	CAMP SITE WITH ELECTRICITY
(Symbol)	(Symbol)	CONTROL STATION
(Symbol)	(Symbol)	FIRE RING
(Symbol)	(Symbol)	PLAYGROUND EQUIPMENT
(Symbol)	(Symbol)	SWIMMING BEACH RAMP (GRAVEL) LAMES
(Symbol)	(Symbol)	BOAT LAUNCHING RAMP (GRAVEL)
(Symbol)	(Symbol)	FISHING PIER
(Symbol)	(Symbol)	SERVICE BUILDING
(Symbol)	(Symbol)	SHOWER BUILDING & WATER FILL STATION
(Symbol)	(Symbol)	SERVICE TREATMENT PLANT
(Symbol)	(Symbol)	FOUNTAIN, HYDRANT, OR COMBINATION
(Symbol)	(Symbol)	FOOT BRIDGE
(Symbol)	(Symbol)	GROUP CAMP AREAS

RECREATIONAL FACILITIES
Group Camp, Beach, Picoic Area

EXISTING	PROPOSED	FEATURE
1	1	ROADS, PARKING, & CAMPING PADS (GRAVEL)
2	-1	NATURE, INTERPRETIVE, HIKING, CAR BIKE TRAILS
1	1	COMFORT STATION (WATER BORN)
2	2	COMFORT STATION (WALK)
1	1	COMFORT STATION (SHOWER)
1	1	WASH HOUSE
1	1	BATHHOUSE
1	1	GROUP PICOIC SHELTER
1	1	PICOIC SHELTER
1	1	PICOIC SITE
1	1	CAMP SITE WITH ELECTRICITY
1	1	CONTROL STATION
1	1	FIRE RING
1	1	PLAYGROUND EQUIPMENT
1	1	SWIMMING BEACH RAMP (GRAVEL) LAMES
1	1	BOAT LAUNCHING RAMP (GRAVEL)
1	1	FISHING PIER
1	1	SERVICE BUILDING
1	1	SHOWER BUILDING & WATER FILL STATION
1	1	SERVICE TREATMENT PLANT
1	1	FOUNTAIN, HYDRANT, OR COMBINATION
1	1	FOOT BRIDGE
1	1	GROUP CAMP AREAS



GROUP AREAS A-E

INSET

DAM EAST BOAT ACCESS & DAY-USE AREA

MCAIR GROUP CAMP, BEACH AND PICOIC AREA

REVISIONS

STANDARD	DESCRIPTIONS	DATE	APPROVED
1	DESIGNED BY: KENNETH SSM and ASSOCIATES, INC. 725 So. 4th St. St. Louis, Missouri 63101		
2	DESIGNED BY: F. WALTERSON		
3	CHECKED BY: J. SANDERS		
4	REVIEWED BY: F. WALTERSON		
5	APPROVED BY: [Signature]		

U.S. ARMY ENGINEER DISTRICT CORPS OF ENGINEERS ST. LOUIS, MISSOURI

KASKASKIA RIVER, ILLINOIS

REVISED MASTER PLAN DAM EAST RECREATION AREA

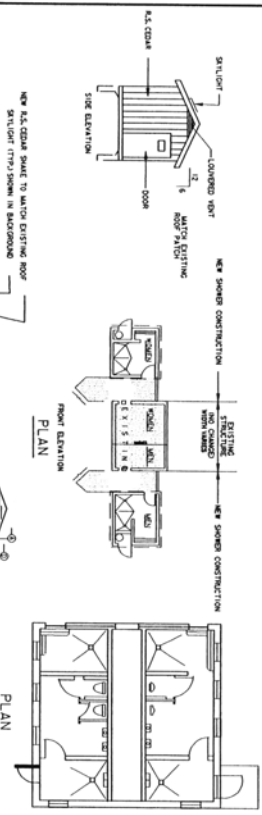
SCALE: 1"=100'

DATE: 10-18-1995

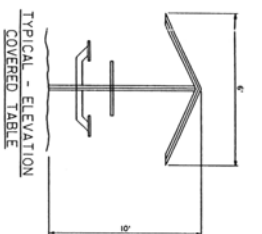
PROJECT NO: 34

PLATE 9A

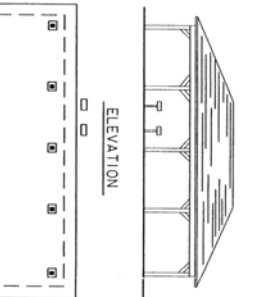
SHEET 3A OF 20



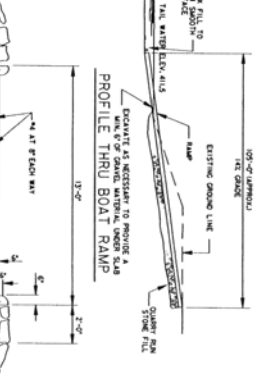
SHOWER ADDITIONS
TO EXISTING COMFORT STATIONS



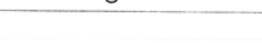
COMFORT STATION
WITH SHOWERS & WASH ROOM



WEATHER PROOF TENT SHELTER
WITH REMOVABLE WALLS



TYPICAL CAMP ROAD



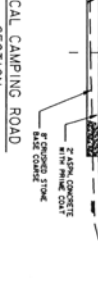
TYPICAL GRAVEL ROAD



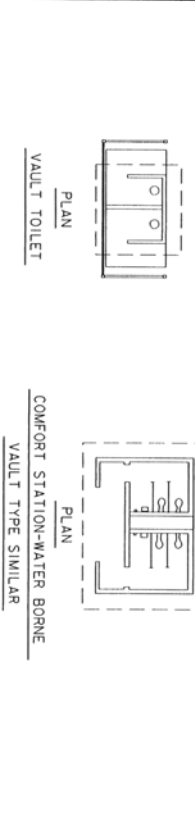
TYPICAL PICNIC SHELTER WITH FIREPLACES AND GRILLS



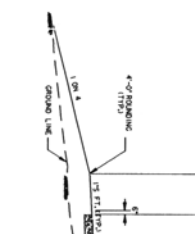
TYPICAL ACCESS ROAD



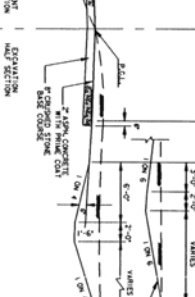
TYPICAL GRAVEL ROAD



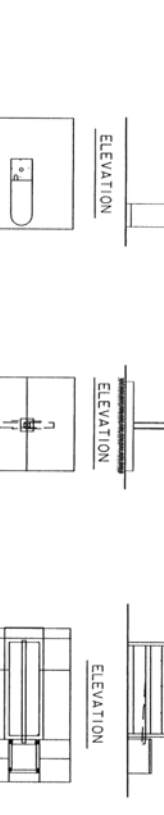
VAULT TOILET



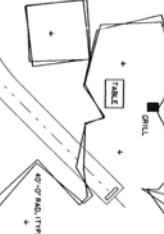
COMFORT STATION-WATER BORNE VAULT TYPE SIMILAR



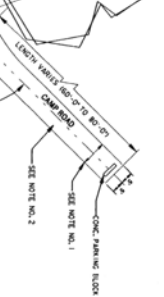
TYPICAL CAMPSITE SERVICE EQUIPMENT (ELECTRIC HOOK-UP)



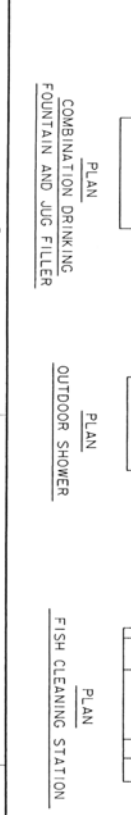
COMBINATION DRINKING FOUNTAIN AND JUG FILLER



OUTDOOR SHOWER



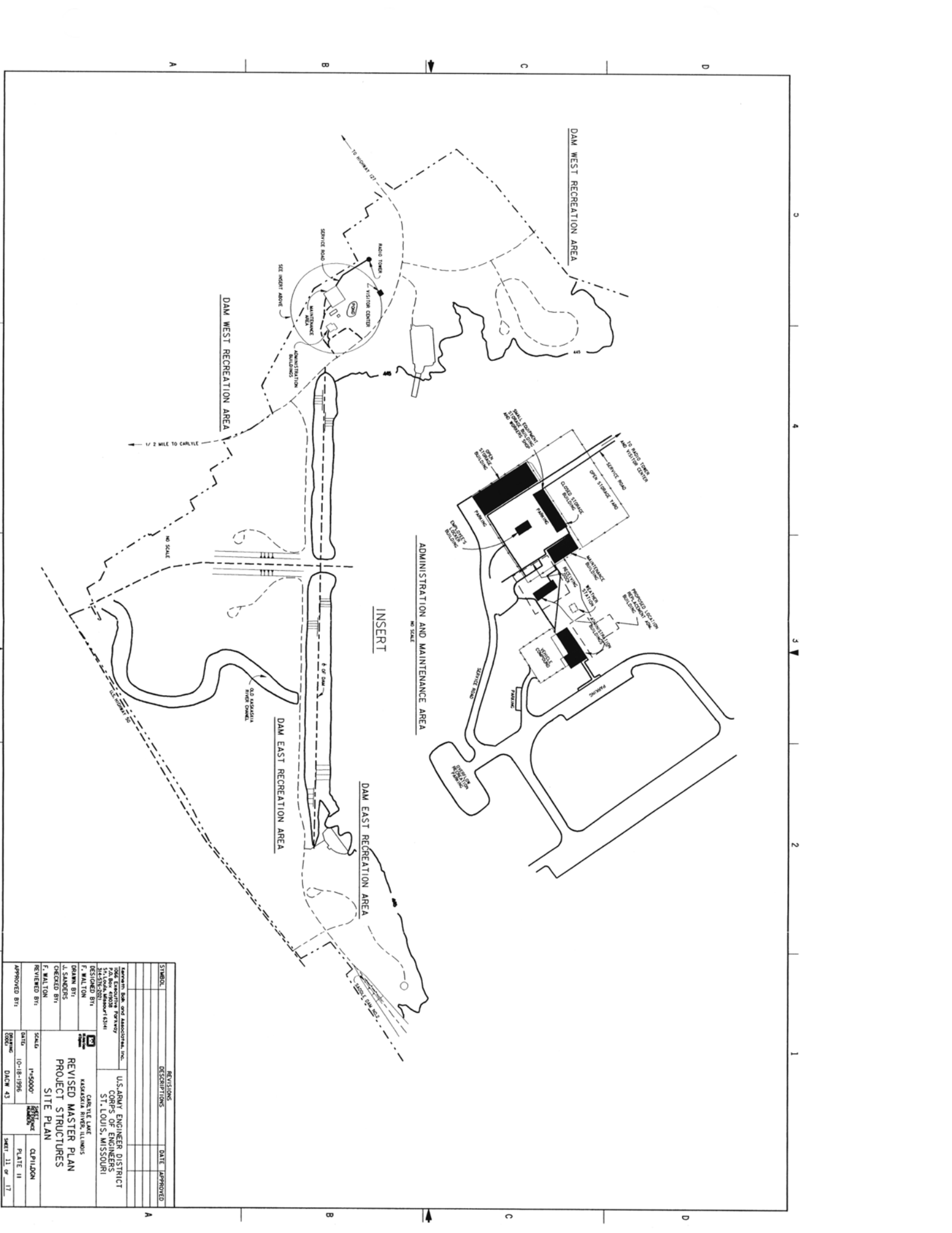
FISH CLEANING STATION



TYPICAL CAMP ROAD

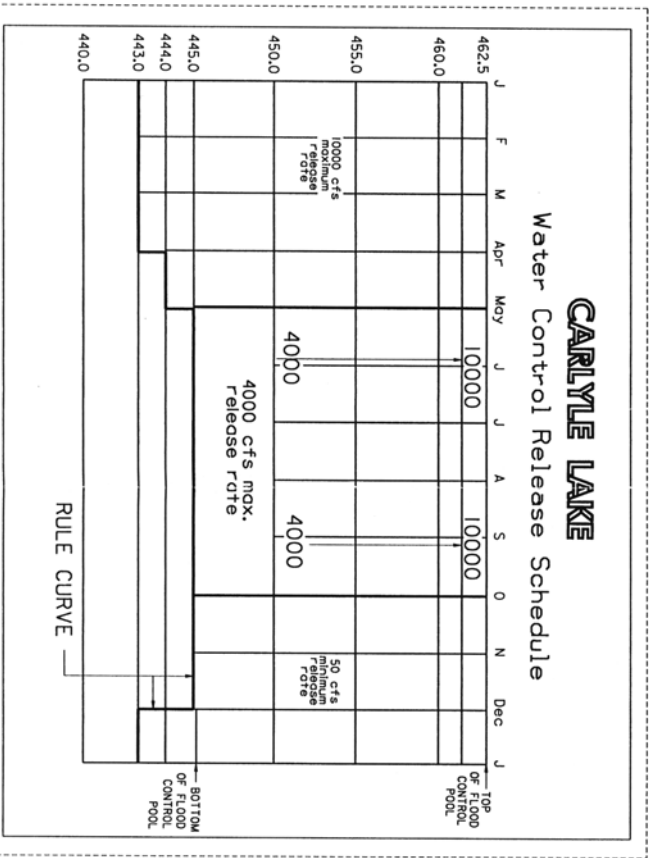
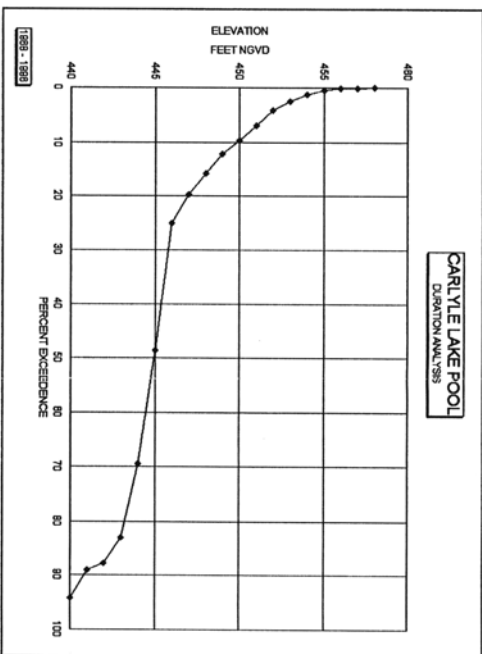
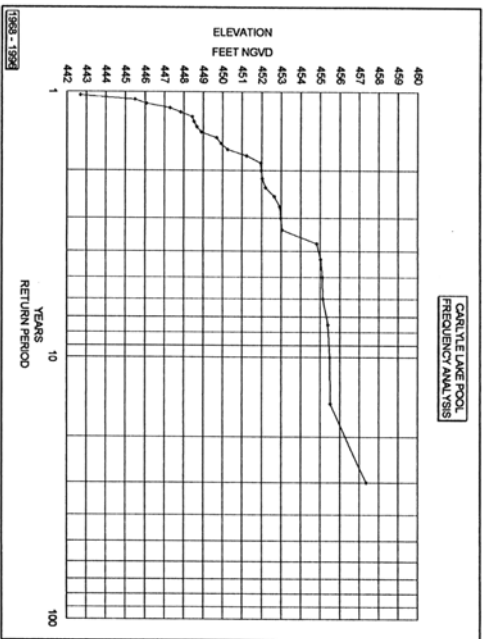
SYMBOLS	REVISIONS	DATE	APPROVED

FEDERAL BUREAU OF INVESTIGATION 400 BOSTON AVENUE WASHINGTON, D. C. 20535	U.S. ARMY ENGINEER DISTRICT CORPS OF ENGINEERS ST. LOUIS, MISSOURI
DESIGNED BY J. WALTON	CHECKED BY J. WALTON
DRAWN BY J. WALTON	SCALE 1"=10'-0"
REVISED MASTER PLAN PLANS, ELEVATIONS, & SECTIONS	DATE 10-18-1958
APPROVED BY J. WALTON	DRAWN BY J. WALTON
SHEET 10 OF 20	DATE DEC 43



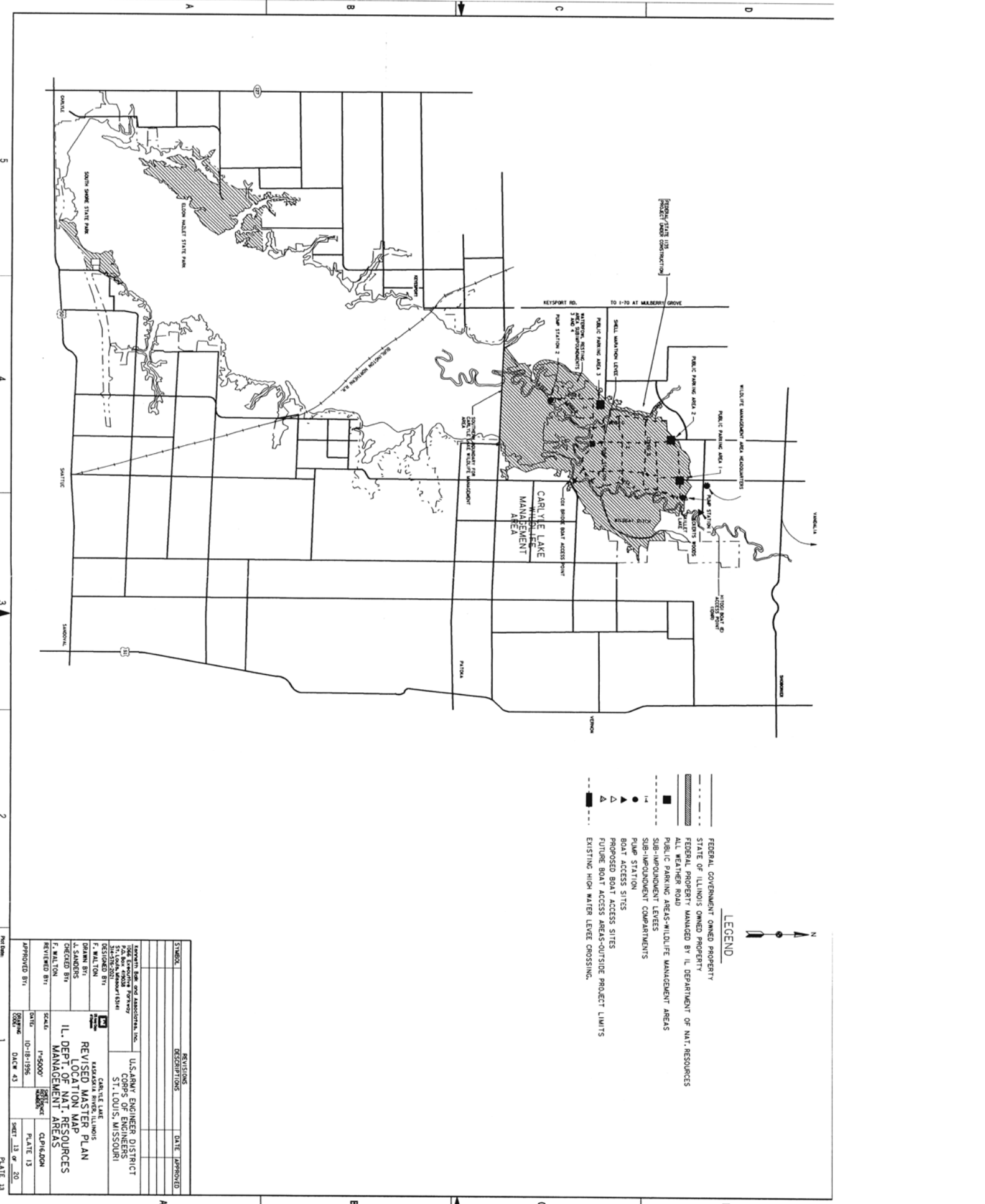
SYMBOL	REVISIONS	DATE	APPROVED
	DESCRIPTIONS		

PREPARED BY: TRACER DRAWN BY: DRANN CHECKED BY: SAUNDERS REVIEWED BY: F. MALTON	DESIGNED BY: F. MALTON CHECKED BY: J. SANDERS REVIEWED BY: F. MALTON	SCALE: 1"=5000' DATE: 10-18-1996 DRAWING: 2000	PROJECT: KASKASKIA RIVER, ILLINOIS CLIENT: CARLE LAKE TITLE: REVISED MASTER PLAN PROJECT STRUCTURES SITE PLAN DESIGNER: U.S. ARMY ENGINEER DISTRICT CORPS OF ENGINEERS ST. LOUIS, MISSOURI APPROVED BY: CEPILLOM DATE: 10-18-1996 SHEET: 11 OF 17
--	---	---	---



SYMBOL	REVISIONS	DATE	APPROVED
	DESIGNATIONS		

KENNETH E. BIRD AND ASSOCIATES, INC. 424 So. 40th Street St. Louis, Missouri 63108	U.S. ARMY ENGINEER DISTRICT CORPS OF ENGINEERS ST. LOUIS, MISSOURI
DESIGNED BY: F. W. MALTON DRAWN BY: J. S. COOKS CHECKED BY: F. W. MALTON REVISIONS BY:	CARLYLE LAKE KASKASKIA RIVER, ILLINOIS REVISED MASTER PLAN FLUCTUATION OF RES. LEVEL & HYDR. DATA
SCALE: 1"=5000' DATE: 10-18-1956	SHEET: C/P 15,000 PLATE: 12 OF: 20

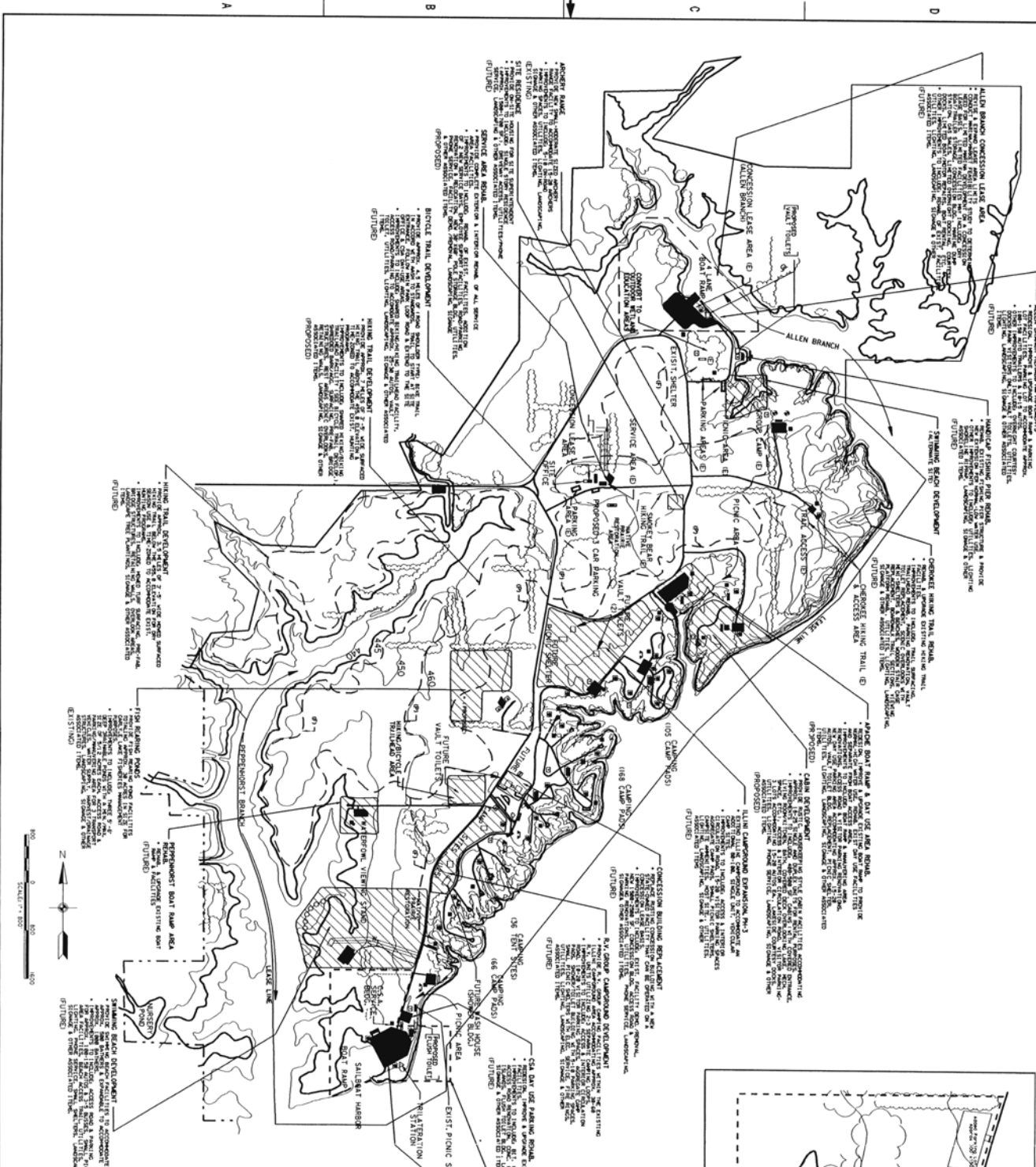
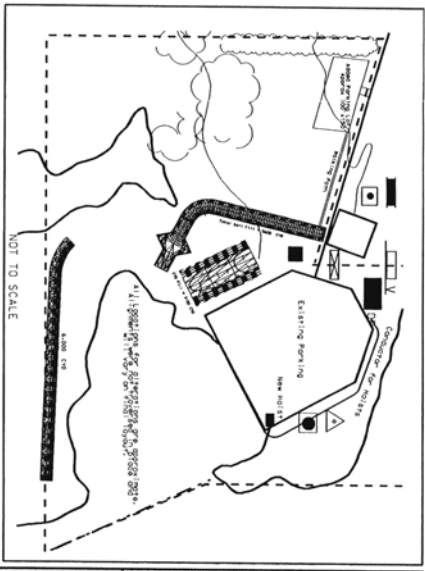


- LEGEND**
- FEDERAL GOVERNMENT OWNED PROPERTY
 - STATE OF ILLINOIS OWNED PROPERTY
 - FEDERAL PROPERTY MANAGED BY IL DEPARTMENT OF NAT. RESOURCES
 - - - ALL WEATHER ROAD
 - ▨ PUBLIC PARKING AREAS-WILDLIFE MANAGEMENT AREAS
 - ▨ SUB-IMPONDMENT LEVELS
 - ▨ SUB-IMPONDMENT COMPARTMENTS
 - BOAT STATION
 - ▲ PROPOSED BOAT ACCESS SITES
 - △ FUTURE BOAT ACCESS AREAS-OUTSIDE PROJECT LIMITS
 - EXISTING HIGH WATER LEVEL CROSSING.

STUDIOS	REVISIONS	DATE	APPROVED

KENNETH BOE AND ASSOCIATES, INC. 1001 W. BROADWAY SUITE 300 ST. LOUIS, MISSOURI 63102		U.S. ARMY ENGINEER DISTRICT CORPS OF ENGINEERS ST. LOUIS, MISSOURI	
DESIGNED BY:	F. WALTON	DRAWN BY:	J. SANDERS
CHECKED BY:	F. WALTON	SCALE:	1"=5000'
REVIEWED BY:		DATE:	10-18-1996
APPROVED BY:		DATE:	10-18-1996

CARLYLE LAKE KASKASKIA RIVER, ILLINOIS REVISIED MASTER PLAN LOCATION MAP ILL. DEPT. OF NAT. RESOURCES MANAGEMENT AREAS	CLIP/DONOR PLATE 13
---	------------------------



EXIST. IDNR CONCESSION LEASE AREAS

- CARLILE SAILING ASSOCIATION-AS DEPICTED ON MAP
- CONCRETE BUILDING AT TILM CAMPGROUND BECC AREA ONLY
- MOBILE CONCESSION BUILD. AT ALLEN BRANCH COMMERCIAL FISHING DAYS ONLY

SYMBOL	DESCRIPTION	DATE	APPROVED
[Symbol]	CONCRETE BUILDING AT TILM CAMPGROUND BECC AREA ONLY		
[Symbol]	MOBILE CONCESSION BUILD. AT ALLEN BRANCH COMMERCIAL FISHING DAYS ONLY		

KANSASIA RIVER, ILLINOIS REVISED MASTER PLAN ELTON HAZLET STATE PARK	U.S. ARMY ENGINEER DISTRICT CORPS OF ENGINEERS ST. LOUIS, MISSOURI
SCALE: 1"=800' DATE: 10-18-1956	SHEET 14 OF 20 PLATE 14



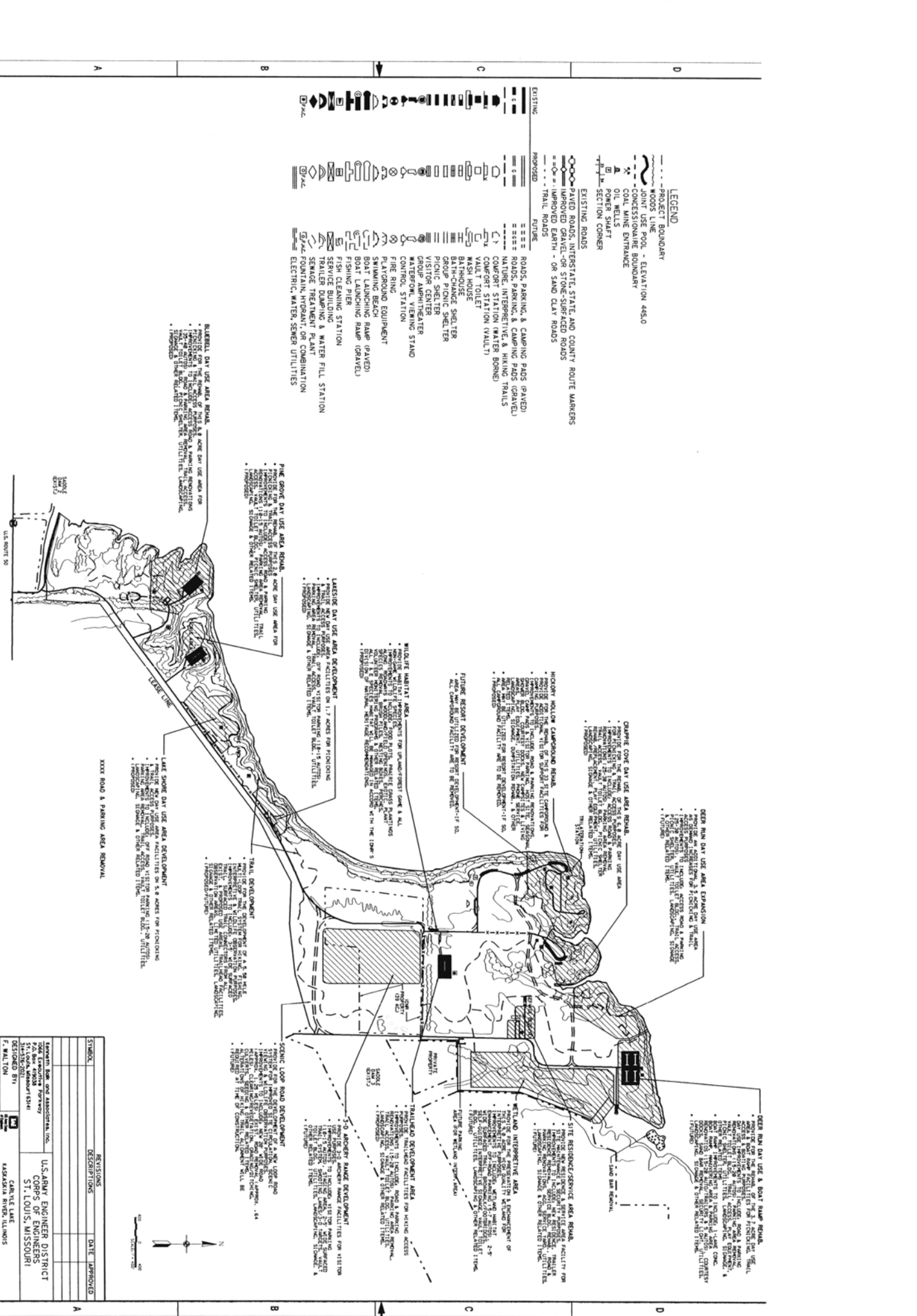
- EXISTING**
- ROADS, INTERSTATE, STATE, AND COUNTY ROUTE MARKERS
 - IMPROVED GRAVEL - OR STONE-SURFACED ROADS
 - PAVED ROADS
 - TRAIL ROADS
- PROPOSED**
- ROADS, INTERSTATE, STATE, AND COUNTY ROUTE MARKERS
 - IMPROVED GRAVEL - OR STONE-SURFACED ROADS
 - PAVED ROADS, PARKING, & CAMPING PADS (GRAVEL)
 - ROADS, PARKING, & CAMPING PADS (GRAVEL)
 - ROADS, PARKING, & CAMPING PADS (GRAVEL)
 - COMFORT STATION (WATER BORN)
 - COMFORT STATION (WALL)
 - WALL TOILET
 - MASH HOUSE
 - BATHHOUSE
 - BATHHOUSE SHELTER
 - GROUP PICNIC SHELTER
 - PICNIC CENTER
 - VISITOR CENTER
 - GROUP AMPHITHEATER
 - CONTROL STATION
 - FIRE RING
 - PLAYGROUND EQUIPMENT
 - SWIMMING BEACH
 - BOAT LAUNCHING RAMP (GRAVEL)
 - BOAT LAUNCHING RAMP (GRAVEL)
 - FISHING PIER
 - TRAILER SERVICE BUILDING
 - TRAILER DUMPING & WATER FILL STATION
 - SEWAGE TREATMENT PLANT
 - FOUNTAIN, HYDRANT, OR COMBINATION
 - ELECTRIC, WATER, SEWER UTILITIES

- BLANKET DAY USE AREA REMOVAL**
- PROVIDE FOR THE REMOVAL OF TRAILERS AND MOTOR VEHICLES FROM THE AREA FOR THE PURPOSES OF MAINTAINING A MAJOR RECREATION AREA.
 - REMOVAL OF TRAILERS AND MOTOR VEHICLES FROM THE AREA FOR THE PURPOSES OF MAINTAINING A MAJOR RECREATION AREA.
 - REMOVAL OF TRAILERS AND MOTOR VEHICLES FROM THE AREA FOR THE PURPOSES OF MAINTAINING A MAJOR RECREATION AREA.
 - REMOVAL OF TRAILERS AND MOTOR VEHICLES FROM THE AREA FOR THE PURPOSES OF MAINTAINING A MAJOR RECREATION AREA.
- PINE GROVE DAY USE AREA REMOVAL**
- PROVIDE FOR THE REMOVAL OF TRAILERS AND MOTOR VEHICLES FROM THE AREA FOR THE PURPOSES OF MAINTAINING A MAJOR RECREATION AREA.
 - REMOVAL OF TRAILERS AND MOTOR VEHICLES FROM THE AREA FOR THE PURPOSES OF MAINTAINING A MAJOR RECREATION AREA.
 - REMOVAL OF TRAILERS AND MOTOR VEHICLES FROM THE AREA FOR THE PURPOSES OF MAINTAINING A MAJOR RECREATION AREA.
 - REMOVAL OF TRAILERS AND MOTOR VEHICLES FROM THE AREA FOR THE PURPOSES OF MAINTAINING A MAJOR RECREATION AREA.
- LAKESHORE DAY USE AREA DEVELOPMENT**
- TRAILER SERVICE BUILDING
 - TRAILER DUMPING & WATER FILL STATION
 - SEWAGE TREATMENT PLANT
 - FOUNTAIN, HYDRANT, OR COMBINATION
 - ELECTRIC, WATER, SEWER UTILITIES

- WILDLIFE HABITAT AREA**
- PROVIDE FOR THE PROTECTION OF WILDLIFE HABITAT AND NESTING SITES.
 - PROVIDE FOR THE PROTECTION OF WILDLIFE HABITAT AND NESTING SITES.
 - PROVIDE FOR THE PROTECTION OF WILDLIFE HABITAT AND NESTING SITES.
 - PROVIDE FOR THE PROTECTION OF WILDLIFE HABITAT AND NESTING SITES.
- HICKORY HOLLOW CAMPGROUND REMOVAL**
- PROVIDE FOR THE REMOVAL OF TRAILERS AND MOTOR VEHICLES FROM THE AREA FOR THE PURPOSES OF MAINTAINING A MAJOR RECREATION AREA.
 - REMOVAL OF TRAILERS AND MOTOR VEHICLES FROM THE AREA FOR THE PURPOSES OF MAINTAINING A MAJOR RECREATION AREA.
 - REMOVAL OF TRAILERS AND MOTOR VEHICLES FROM THE AREA FOR THE PURPOSES OF MAINTAINING A MAJOR RECREATION AREA.
 - REMOVAL OF TRAILERS AND MOTOR VEHICLES FROM THE AREA FOR THE PURPOSES OF MAINTAINING A MAJOR RECREATION AREA.
- CAMPING COVE DAY USE AREA REMOVAL**
- PROVIDE FOR THE REMOVAL OF TRAILERS AND MOTOR VEHICLES FROM THE AREA FOR THE PURPOSES OF MAINTAINING A MAJOR RECREATION AREA.
 - REMOVAL OF TRAILERS AND MOTOR VEHICLES FROM THE AREA FOR THE PURPOSES OF MAINTAINING A MAJOR RECREATION AREA.
 - REMOVAL OF TRAILERS AND MOTOR VEHICLES FROM THE AREA FOR THE PURPOSES OF MAINTAINING A MAJOR RECREATION AREA.
 - REMOVAL OF TRAILERS AND MOTOR VEHICLES FROM THE AREA FOR THE PURPOSES OF MAINTAINING A MAJOR RECREATION AREA.

- DEER RUN DAY USE AREA EXPANSION**
- PROVIDE FOR THE EXPANSION OF TRAILERS AND MOTOR VEHICLES FROM THE AREA FOR THE PURPOSES OF MAINTAINING A MAJOR RECREATION AREA.
 - EXPANSION OF TRAILERS AND MOTOR VEHICLES FROM THE AREA FOR THE PURPOSES OF MAINTAINING A MAJOR RECREATION AREA.
 - EXPANSION OF TRAILERS AND MOTOR VEHICLES FROM THE AREA FOR THE PURPOSES OF MAINTAINING A MAJOR RECREATION AREA.
 - EXPANSION OF TRAILERS AND MOTOR VEHICLES FROM THE AREA FOR THE PURPOSES OF MAINTAINING A MAJOR RECREATION AREA.
- DEER RUN DAY USE AREA BOAT RAMP REMOVAL**
- PROVIDE FOR THE REMOVAL OF TRAILERS AND MOTOR VEHICLES FROM THE AREA FOR THE PURPOSES OF MAINTAINING A MAJOR RECREATION AREA.
 - REMOVAL OF TRAILERS AND MOTOR VEHICLES FROM THE AREA FOR THE PURPOSES OF MAINTAINING A MAJOR RECREATION AREA.
 - REMOVAL OF TRAILERS AND MOTOR VEHICLES FROM THE AREA FOR THE PURPOSES OF MAINTAINING A MAJOR RECREATION AREA.
 - REMOVAL OF TRAILERS AND MOTOR VEHICLES FROM THE AREA FOR THE PURPOSES OF MAINTAINING A MAJOR RECREATION AREA.
- SITE RESIDENCE/SERVICE AREA REMOVAL**
- PROVIDE FOR THE REMOVAL OF TRAILERS AND MOTOR VEHICLES FROM THE AREA FOR THE PURPOSES OF MAINTAINING A MAJOR RECREATION AREA.
 - REMOVAL OF TRAILERS AND MOTOR VEHICLES FROM THE AREA FOR THE PURPOSES OF MAINTAINING A MAJOR RECREATION AREA.
 - REMOVAL OF TRAILERS AND MOTOR VEHICLES FROM THE AREA FOR THE PURPOSES OF MAINTAINING A MAJOR RECREATION AREA.
 - REMOVAL OF TRAILERS AND MOTOR VEHICLES FROM THE AREA FOR THE PURPOSES OF MAINTAINING A MAJOR RECREATION AREA.

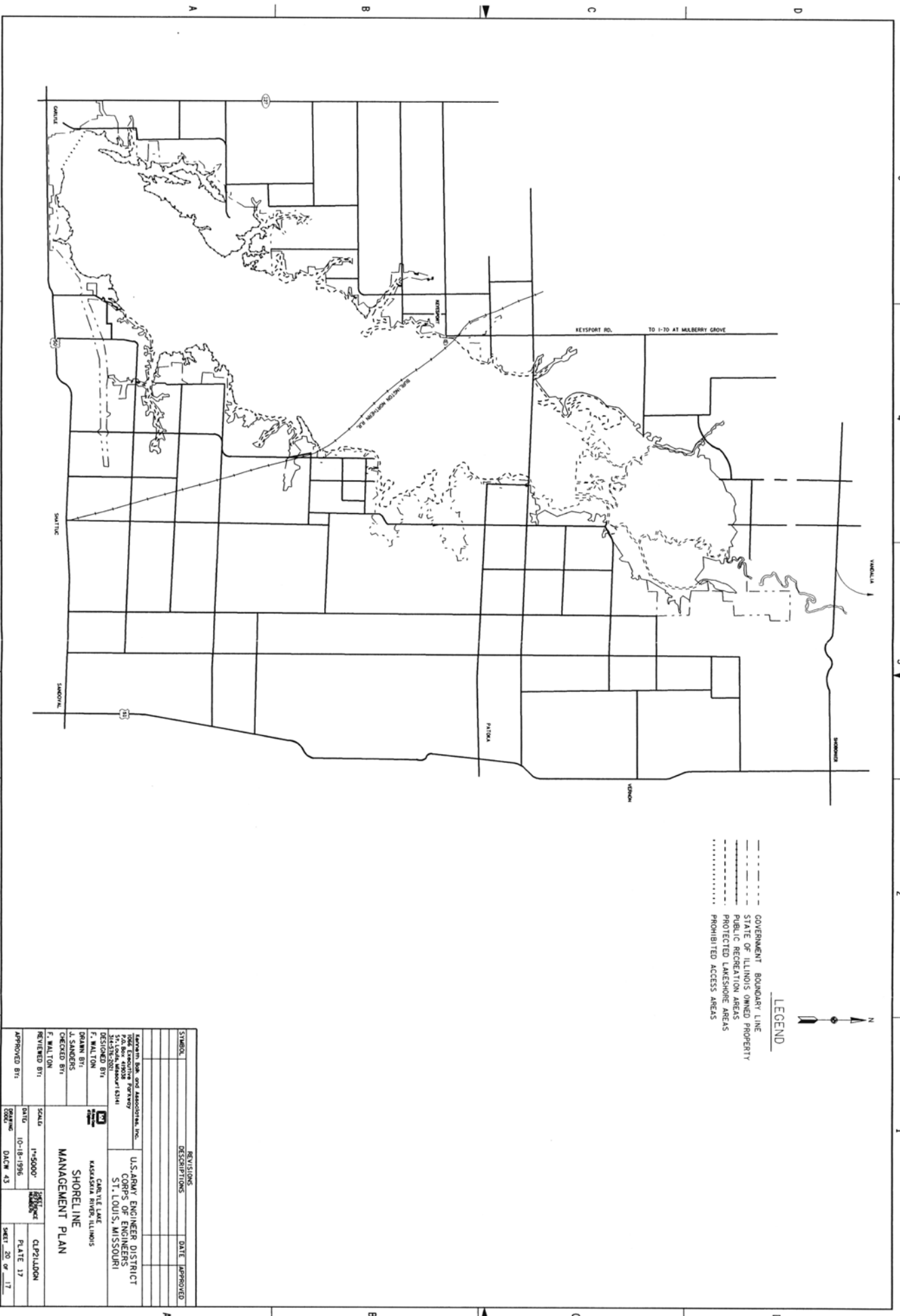
- WETLAND INTERPRETING AREA**
- PROVIDE FOR THE INTERPRETING OF WETLANDS AND WATER RESOURCES.
 - INTERPRETING OF WETLANDS AND WATER RESOURCES.
 - INTERPRETING OF WETLANDS AND WATER RESOURCES.
 - INTERPRETING OF WETLANDS AND WATER RESOURCES.
- TRAILHEAD DEVELOPMENT AREA**
- PROVIDE FOR THE DEVELOPMENT OF TRAILHEADS AND WALKING TRAILS.
 - DEVELOPMENT OF TRAILHEADS AND WALKING TRAILS.
 - DEVELOPMENT OF TRAILHEADS AND WALKING TRAILS.
 - DEVELOPMENT OF TRAILHEADS AND WALKING TRAILS.
- 3-D ARCHERY RANGE DEVELOPMENT**
- PROVIDE FOR THE DEVELOPMENT OF A 3-D ARCHERY RANGE.
 - DEVELOPMENT OF A 3-D ARCHERY RANGE.
 - DEVELOPMENT OF A 3-D ARCHERY RANGE.
 - DEVELOPMENT OF A 3-D ARCHERY RANGE.
- SCENIC LOOP ROAD DEVELOPMENT**
- PROVIDE FOR THE DEVELOPMENT OF A SCENIC LOOP ROAD.
 - DEVELOPMENT OF A SCENIC LOOP ROAD.
 - DEVELOPMENT OF A SCENIC LOOP ROAD.
 - DEVELOPMENT OF A SCENIC LOOP ROAD.



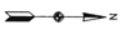
STANDARD	REVISIONS	DATE	APPROVED

U.S. ARMY ENGINEER DISTRICT
 CORPS OF ENGINEERS
 ST. LOUIS, MISSOURI
 CARLISLE LAKE
 KASKASKIA RIVER, ILLINOIS
 SOUTH SHORE
 STATE PARK
 REVISIONS
 DESIGNED BY
 CHECKED BY
 REVIEWED BY
 APPROVED BY
 DATE

SCALE
 DATE
 SHEET 15 OF 20
 PLATE 15

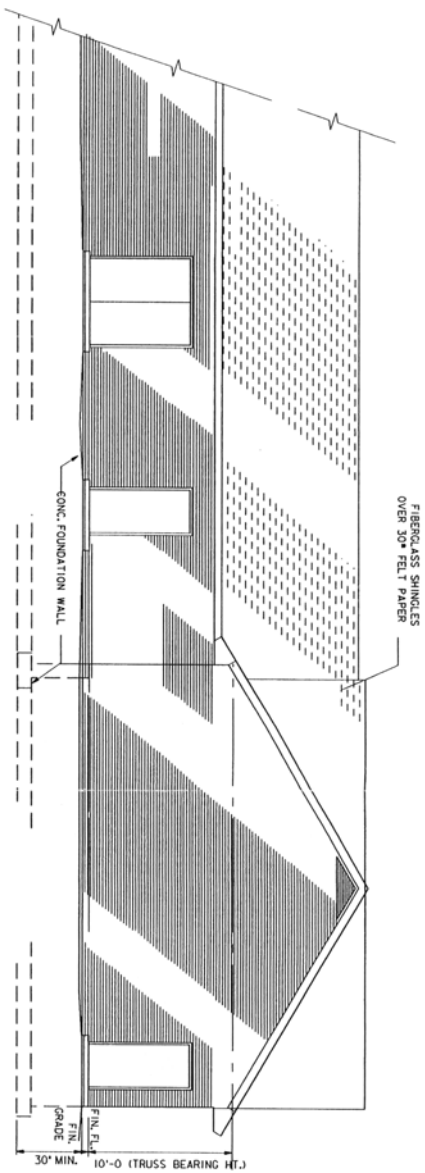


- LEGEND**
- GOVERNMENT BOUNDARY LINE
 - - - STATE OF ILLINOIS OWNED PROPERTY
 - PUBLIC RECREATION AREAS
 - - - PROTECTED LAKESHORE AREAS
 - PROHIBITED ACCESS AREAS



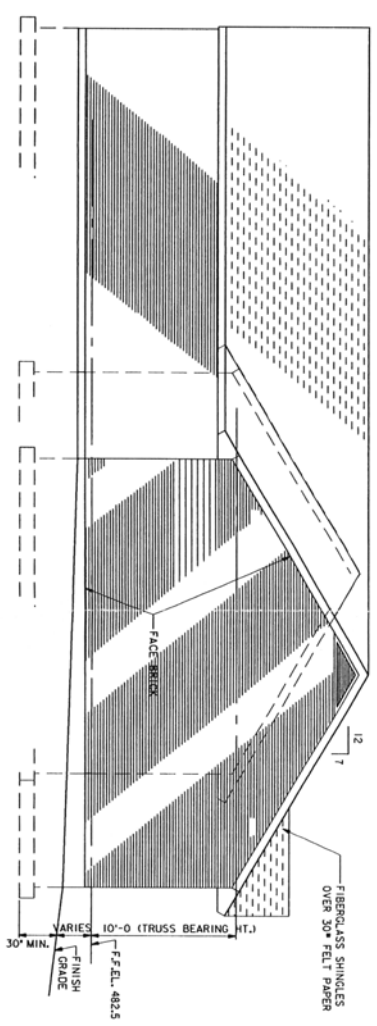
SYMBOL	REVISIONS	DATE	APPROVED

SHERWIN, BISH, AND ASSOCIATES, INC. 1000 N. W. 10th Street Fort Lauderdale, FL 33304 305-555-1000	U.S. ARMY ENGINEER DISTRICT CORPS OF ENGINEERS ST. LOUIS, MISSOURI
DESIGNED BY: DRAWN BY: L. SANDERS	CHARLIE LAKE KASKASKIA RIVER, ILLINOIS
CHECKED BY: F. WALTON	SHORELINE MANAGEMENT PLAN
REVIEWED BY: APPROVED BY:	SCALE: 1"=5000' DATE: 10-18-1996 DRAWING CODE: DACW 43
	CLP/LLDON PLATE 17 SHEET 20 OF 17



(PARTIAL) **SOUTH ELEVATION**

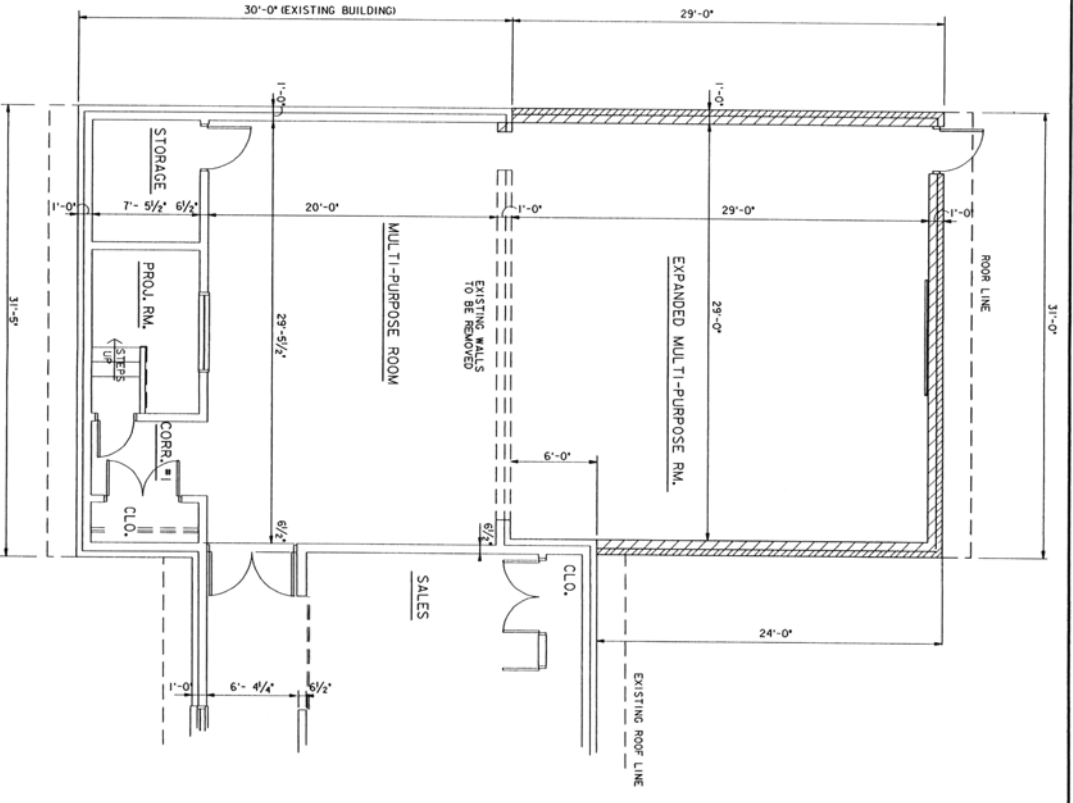
SCALE: $\frac{1}{2}'' = 1'-0''$



EAST ELEVATION

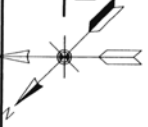
SCALE: $\frac{1}{2}'' = 1'-0''$

DRAWN BY: A. SARGENT CHECKED BY: G. WOODRICK DATE: MAY 1971		PROJECT NO.: 43 SHEET NO.: 18	
ARCHITECT: HORN & KURTZ 1001 N. 2ND ST. ST. LOUIS, MO. 63102		CONTRACTOR: BILLY W. BROWN 1011 W. 11TH ST. ST. LOUIS, MO. 63104	
DESCRIPTION: REVISIONS US ARMY ENGINEER DISTRICT ST. LOUIS UPPER MISSISSIPPI RIVER BASIN KASKASKIA RIVER CLAYTON COUNTY, ILLINOIS VISITOR CENTER REPLACEMENT ADDITION BUILDING		DATE: 11/19/70 DRAWN BY: A. SARGENT CHECKED BY: G. WOODRICK DATE: MAY 1971	
SHEET NO. 18 OF 18		SHEET 18 OF 18	

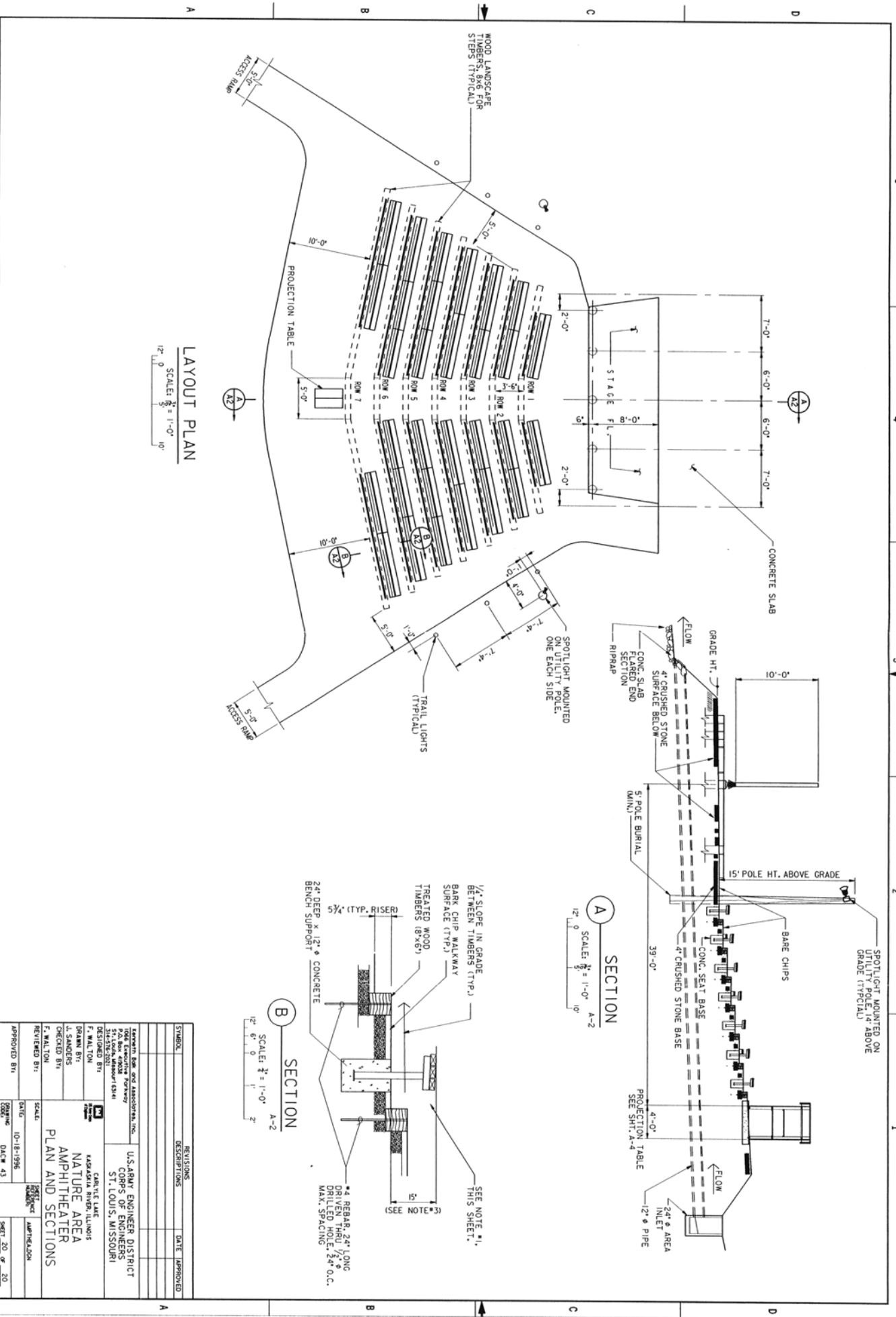


FLOOR PLAN

SCALE: 1/4" = 1'-0"



SYMBOL DATE APPROVED		DESCRIPTION DATE APPROVED	
DESIGNED BY: A. LAWRENCE DRAWN BY: C. ANDERSON CHECKED BY: S. ANDERSON DATE: MAY 1997			
USARKANT ENGINEER DISTRICT, ST. LOUIS 1501 MARKET STREET ST. LOUIS, MISSOURI 63103		KANSASIA RIVER DISTRICT, ILLINOIS UPPER MISSISSIPPI RIVER BASIN KANSASIA RIVER DISTRICT, ILLINOIS VISITOR CENTER REPLACEMENT BUILDING	
DRAWN BY: D.M.C. #43 DATE: 10/19/97	SHEET NO. 19 OF 20	PARTIAL FLOOR PLAN	



SYMBOL	REVISIONS	DATE	APPROVED

DESIGNED BY: F. WALTON
DRAWN BY: J. SANDERS
CHECKED BY: F. WALTON
SCALE: 1/8" = 1'-0"
DATE: 10-18-1996
PROJECT: KASKASKIA RIVER, ILLINOIS
CLIENT: U.S. ARMY ENGINEER DISTRICT
 CORPS OF ENGINEERS
 ST. LOUIS, MISSOURI

PROJECT: NATURE AREA AMPHITHEATER
PLAN AND SECTIONS

APPROVED BY: [Signature]
DATE: 10-18-1996
SCALE: 1/8" = 1'-0"
SHEET: 20 OF 20