



US Army Corps
of Engineers

Information Paper Lower Meramec Multi-Jurisdictional Floodplain Management Plan, MO

Investigations (FRM)

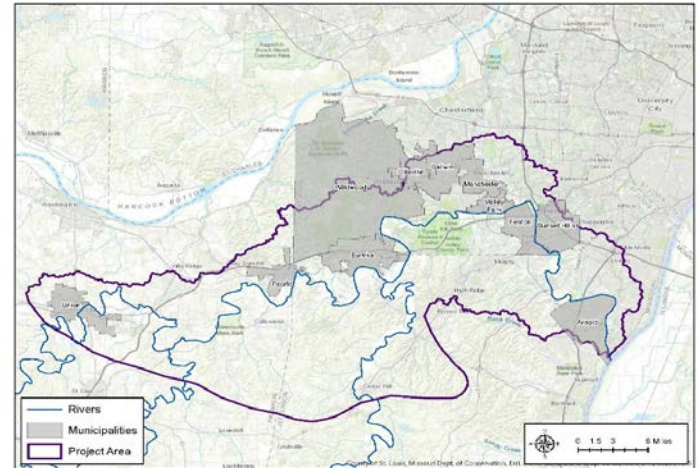
Location: The lower Meramec basin is comprised of the lowermost 71 miles of the Meramec River, the 23 miles of the Bourbeuse River and 19 miles of the Big River. The study area includes portions of three counties and eight communities.

Description: An FY18 Interagency Proposal was submitted to the Institute for Water Resources in July 2017. The Proposal was selected in October 2017 and FY18 funds allocated to produce a floodplain management plan (FMP) intended to serve as a blueprint that can be implemented by Cities and Counties in the project area. The FMP will include and foster:

- Flood risk reduction strategies that are current, technically sound and considers all possible mitigation alternatives and the consequences of those alternatives.
- Prioritization of resources to reduce risk to the furthest extent and minimizes effect on natural floodplain functions.
- Public and political support for activities and projects and a constituency that wants to see the plan's recommendations implemented.

Issues: Two recent floods of record resulted in two corresponding Major Disaster Declarations January 2016 (DR-4250-MO with \$97 million in federal disaster assistance provided for the declared area) and June 2017 (DR-4317-MO with \$90 million in federal disaster assistance provided for the declared area).

Importance: The former flood of record in the basin was 1982 and now new record stages have been recorded on all river gages in this nearly 4,000 sq. mile basin. Damages are attributed to many factors including increased frequency of heavy rainfall and severe storms, geology, topography, land use changes, increased storm water runoff, and loss of wetlands and open space. These factors collectively contribute to repetitive damages in the lower basin to include closure of Interstates 44 and 55 (10 days total within 16 months), critical infrastructure impacts as well as 1,000 homes and hundreds of businesses directly flooded.



Study Area

Risk: Based on the Regional All-Hazard Mitigation Plan dated July 2015 and approved by FEMA, flooding potential is identified as a high probability of occurrence and is demonstrated by the frequency of recent record setting floods. The lower Meramec Basin is identified as highly vulnerable based on socio-economics, location of communities and school districts, repetitive loss claims and hazard event history.

Consequence: In the absence of a Floodplain Management Plan local officials are left to make flood risk reduction decisions with inadequate or outdated information or without considering all possible mitigation alternatives.

Activities for FY 18: Initiate floodplain management planning by hosting a public scoping meeting, conducting the flood hazard and risk assessment and initiate development of mitigation strategies.

Activities after FY18: Conduct the flood risk assessment, initiate and complete development of mitigation strategies, draft action plan, DQC and Public Review Meeting.

Acquisition Strategy: No contracts are anticipated

Project Sponsor/Customer: Interagency Floodplain Management Planning Committee.

Congressional Interest: Senate: Blunt House: Wagner

Phase	FY 18 Budget	FY19 Budget
Investigations	\$200,000	\$0