

ROCK PINNACLE OBSTRUCTIONS TO A 9' NAVIGATION CHANNEL  
AT A THEBES GAGE READING OF 0

ROCK OBSTRUCTIONS ARE SHOWN IN BLUE

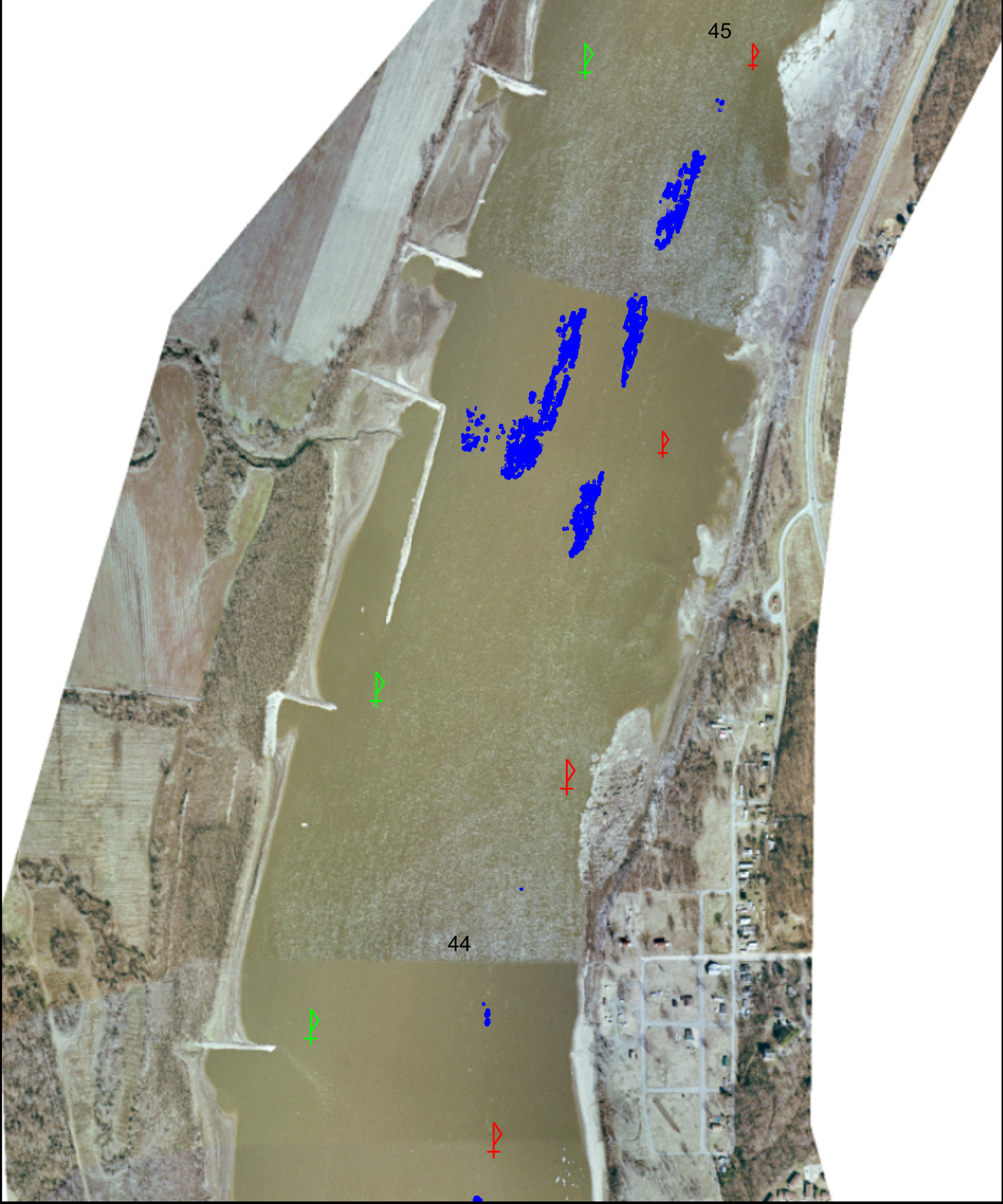
2006 ROCK PINNACLE SURVEY

2006 AERIAL PHOTO

BUOY LOCATIONS ON APRIL 12, 2012. THEBES GAGE 15.5

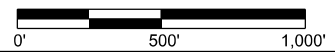






**ROCK PINNACLE OBSTRUCTIONS TO A 9' NAVIGATION CHANNEL  
AT A THEBES GAGE READING OF 0**

ROCK OBSTRUCTIONS ARE SHOWN IN BLUE  
2006 ROCK PINNACLE SURVEY  
2006 AERIAL PHOTO  
BUOY LOCATIONS ON APRIL 12, 2012. THEBES GAGE 15.5





44



43



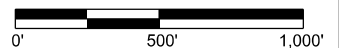
# ROCK PINNACLE OBSTRUCTIONS TO A 9' NAVIGATION CHANNEL AT A THEBES GAGE READING OF 0

ROCK OBSTRUCTIONS ARE SHOWN IN BLUE

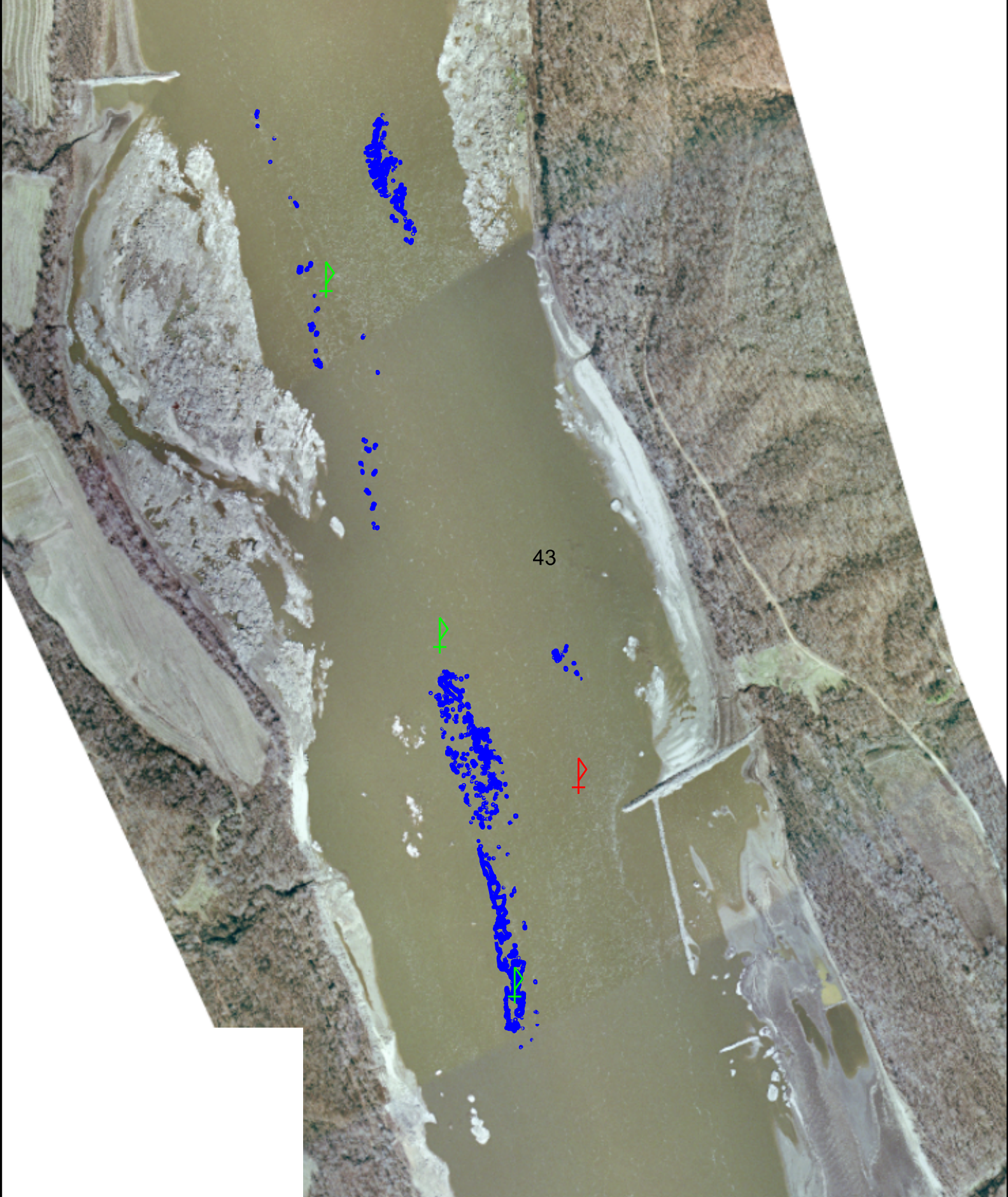
2006 ROCK PINNACLE SURVEY

2006 AERIAL PHOTO

BUOY LOCATIONS ON APRIL 12, 2012. THEBES GAGE 15.5







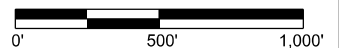
**ROCK PINNACLE OBSTRUCTIONS TO A 9' NAVIGATION CHANNEL  
AT A THEBES GAGE READING OF 0**

ROCK OBSTRUCTIONS ARE SHOWN IN BLUE

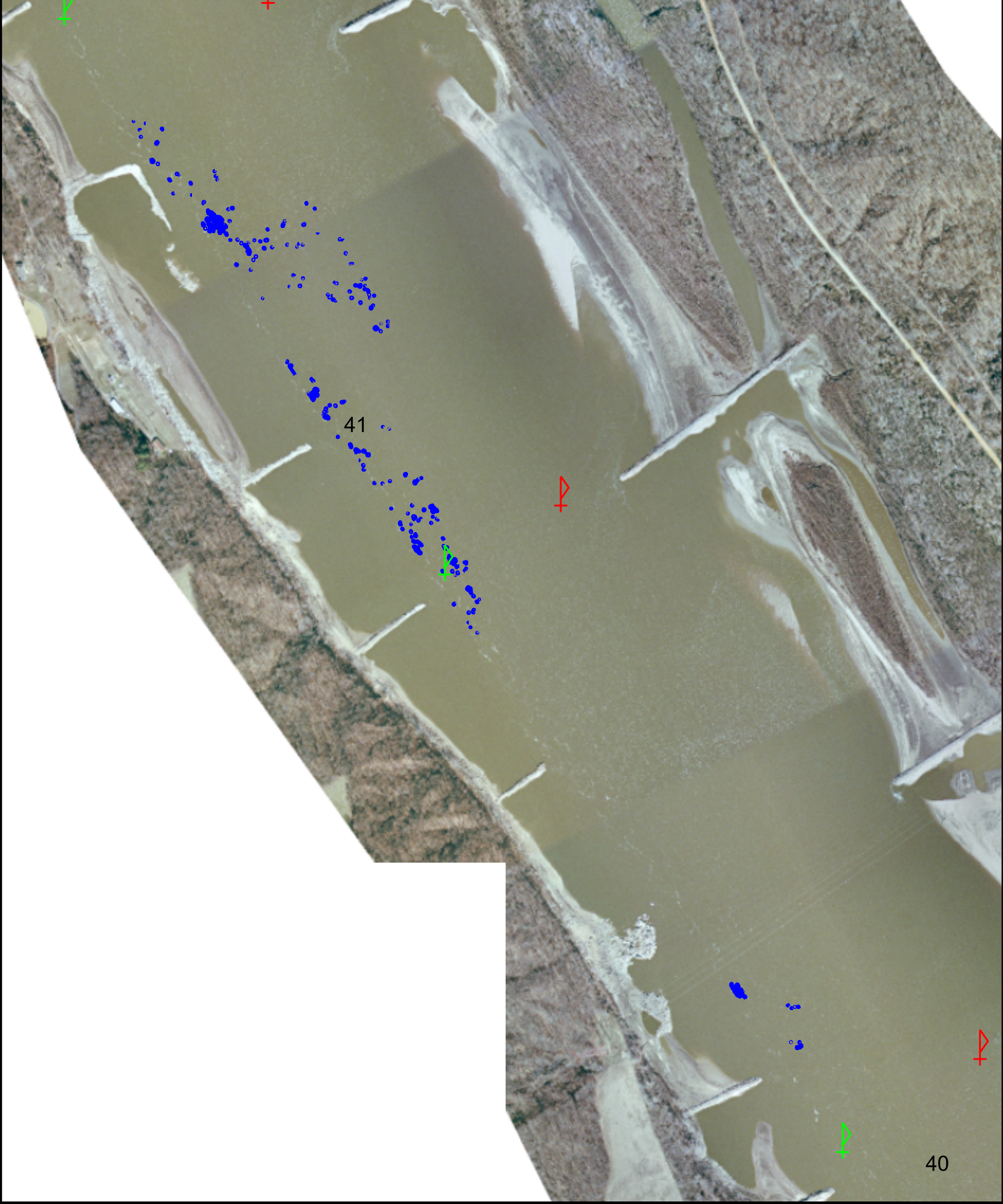
2006 ROCK PINNACLE SURVEY

2006 AERIAL PHOTO

BUOY LOCATIONS ON APRIL 12, 2012. THEBES GAGE 15.5

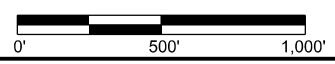






ROCK PINNACLE OBSTRUCTIONS TO A 9' NAVIGATION CHANNEL  
AT A THEBES GAGE READING OF 0

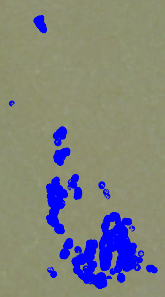
ROCK OBSTRUCTIONS ARE SHOWN IN BLUE  
2006 ROCK PINNACLE SURVEY  
2006 AERIAL PHOTO  
BUOY LOCATIONS ON APRIL 12, 2012. THEBES GAGE 15.5







39



38

### ROCK PINNACLE OBSTRUCTIONS TO A 9' NAVIGATION CHANNEL AT A THEBES GAGE READING OF 0

ROCK OBSTRUCTIONS ARE SHOWN IN BLUE  
2006 ROCK PINNACLE SURVEY  
2006 AERIAL PHOTO  
BUOY LOCATIONS ON APRIL 12, 2012. THEBES GAGE 15.5

